

STREET IMPROVEMENTS

CYPRESS

W'LY LINE HEDGECLIFF FOURTH ADDITION
TO N. LINE MT. VERNON

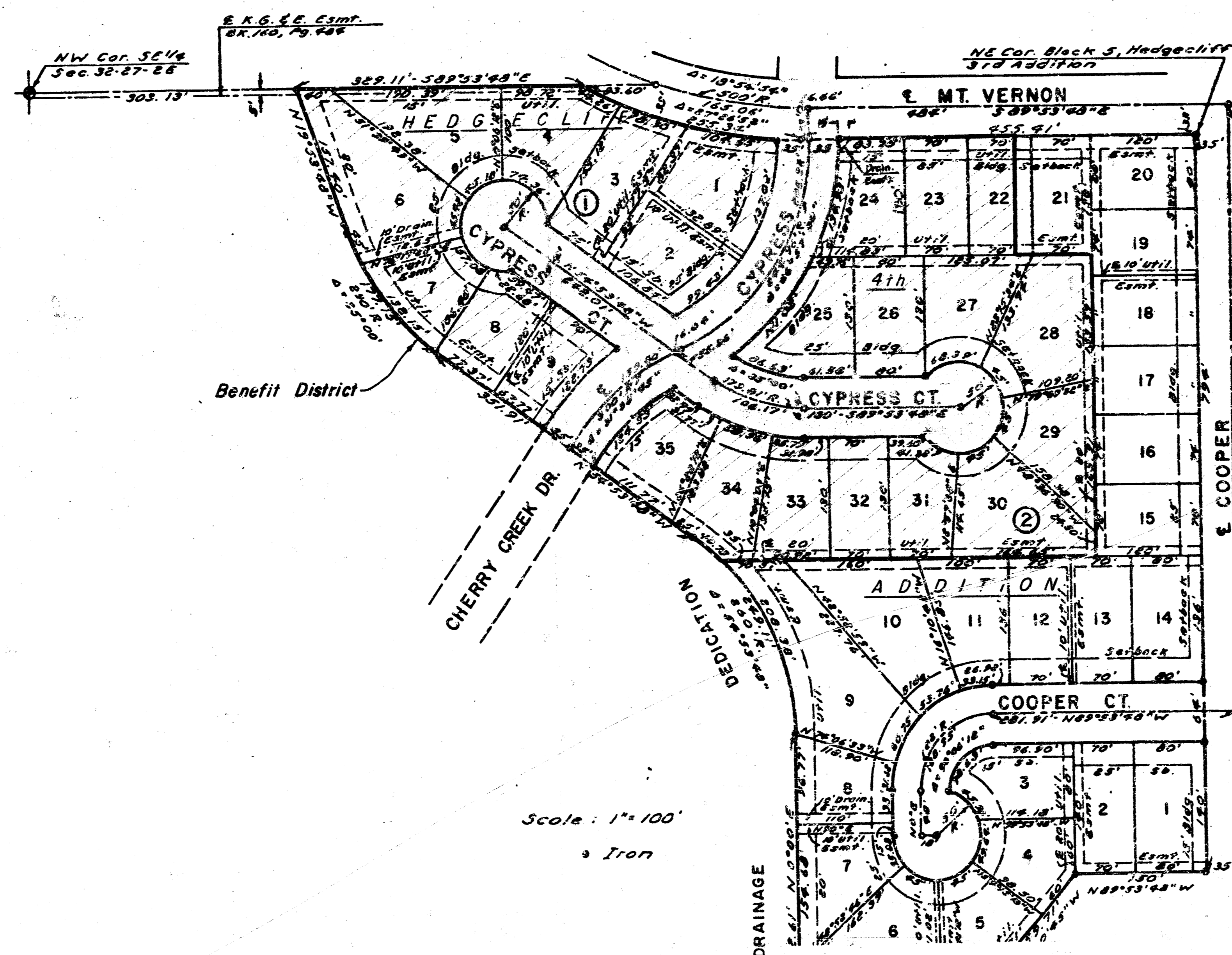
CYPRESS COURT

W. LINE CYPRESS TO AND INCLUDING CUL-DE-SAC

CYPRESS COURT

E. LINE CYPRESS TO AND INCLUDING CUL-DE-SAC

Project no. 472 - 76 - 245 - 81140 - 000 - 000 - 001



INDEX

1	Location & Title
2-3	Typical Sections
4-6	Street Plans
7	Incidental Drainage
8	Inlet Details
9-12	Earthwork Sections

Scale: 1" = 100'
Iron

CITY OF WICHITA, KS.
MICHAEL E. LINDEBAK - CITY ENGINEER



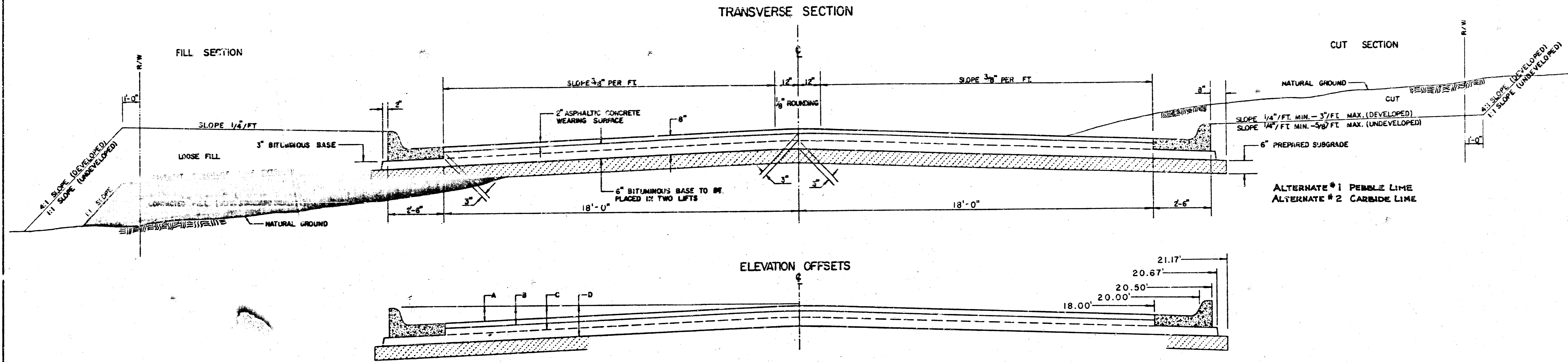
1/12 JUNE 1984

BENCH MARK - Elev. 170.76, City Std Disc. at the South end of the South end of the West headwall of the RCBC on Cypress, South of Cypress Court.

BAUGHMAN COMPANY, P.A.
SURVEYING & ENGINEERING
316/262-7271 • 330 LAURA • WICHITA, KANSAS 67211

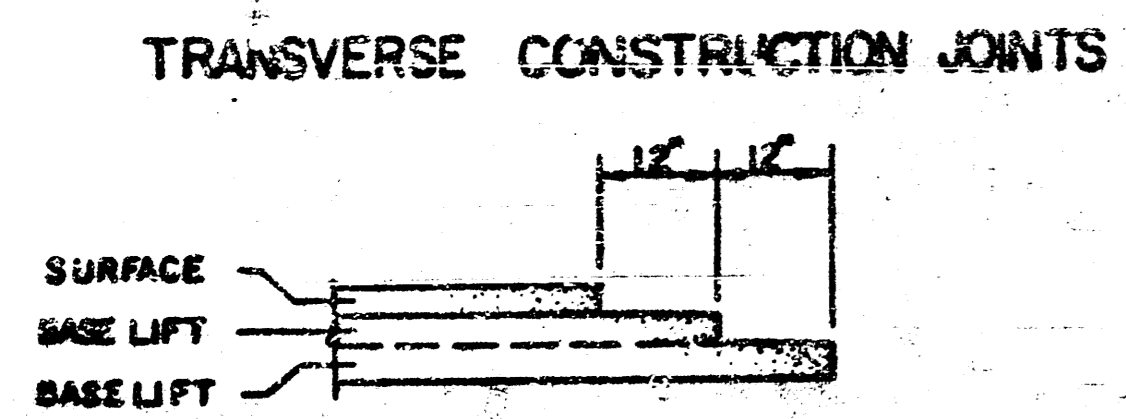
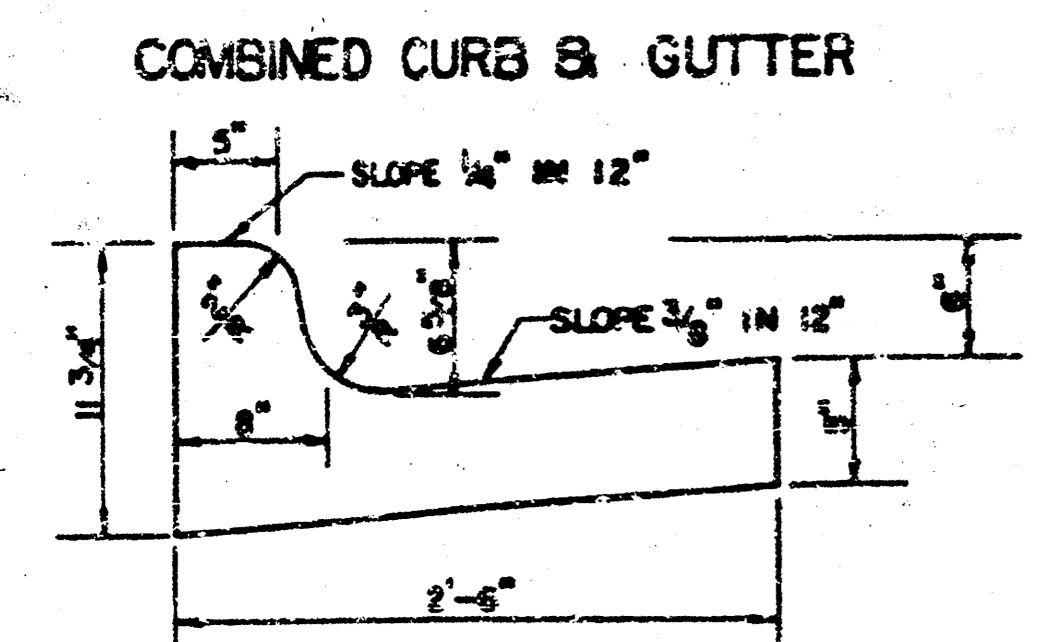
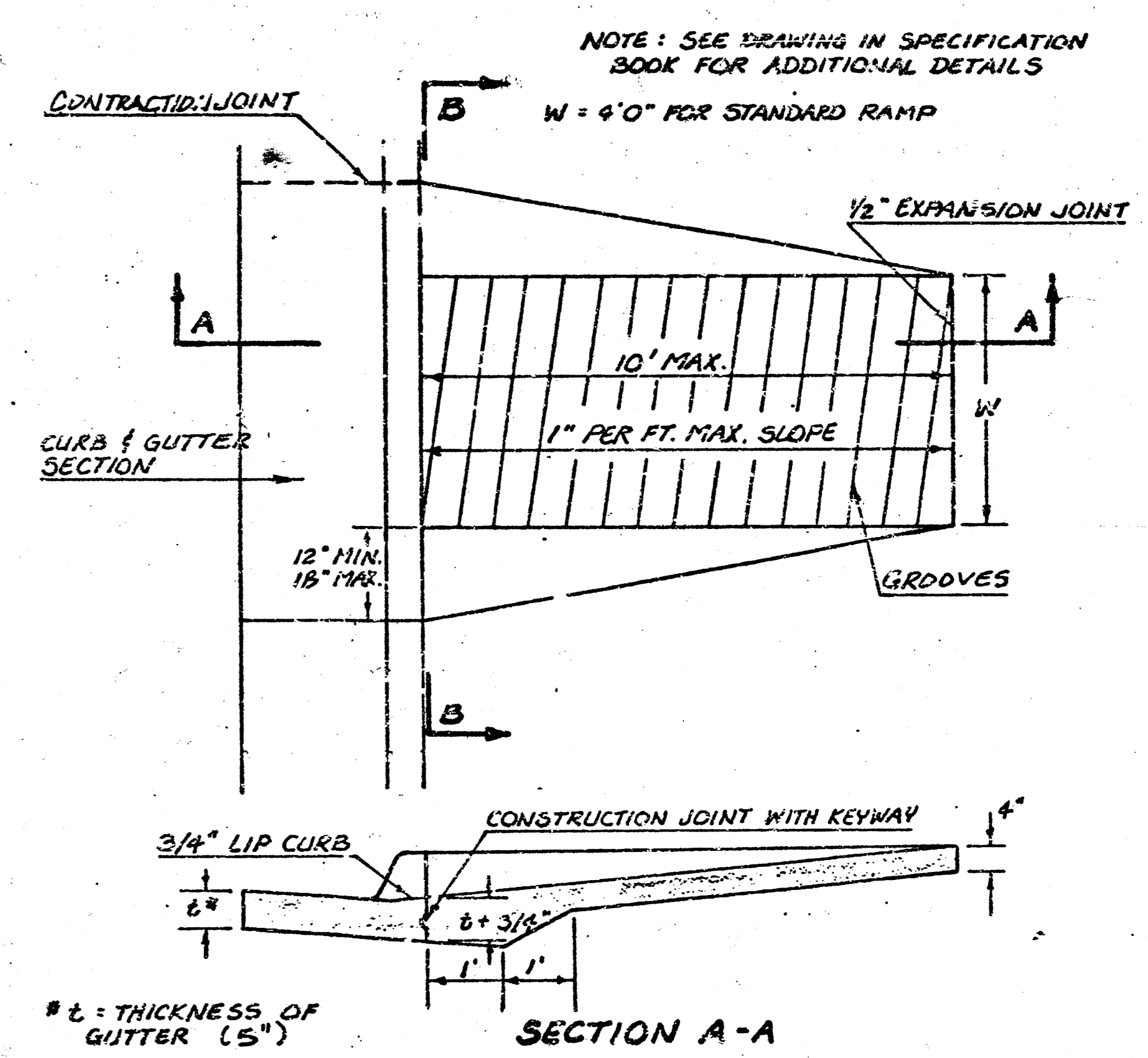
FILMED FROM THE BEST

TYPICAL 4' PAVEMENT DETAILS



STANDARD WHEELCHAIR RAMP CONSTRUCTION DETAIL FOR STREETS WITH COMBINED CURB & GUTTER

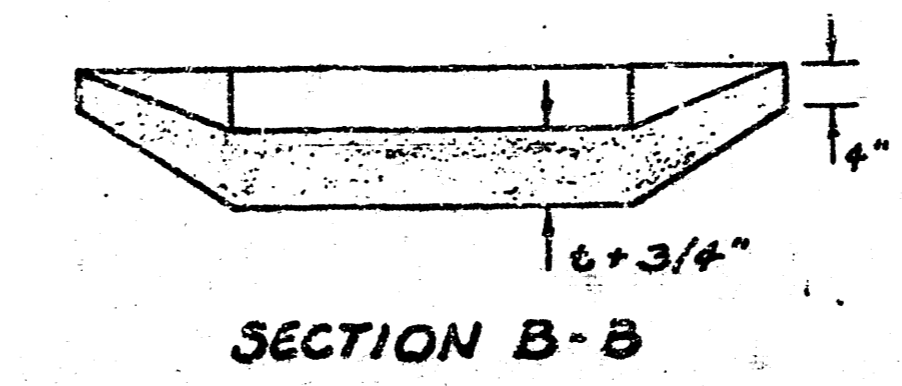
	DISTANCE FROM CENTERLINE (LT. & RT.)													
	0	2	4	6	8	10	12	14	16	18	20	20.5	20.67	21.17
A: TOP OF CURBS TO TOP OF SURFACE LIFT	-.05	-.01	.05	.11	.18	.24	.30	.36	.43	.49	---	---	---	---
B: TOP OF CURBS TO TOP OF UPPER BASE LIFT	.11	.16	.22	.28	.34	.40	.47	.53	.59	.65	---	---	---	---
C: TOP OF CURBS TO TOP OF LOWER BASE LIFT	.36	.41	.47	.53	.59	.65	.72	.78	.84	.90	.97	.98	.99	---
D: TOP OF CURBS TO TOP OF SUBGRADE	.61	.66	.72	.78	.84	.90	.97	1.03	1.09	1.15	1.22	1.23	1.24	1.25



TRANSVERSE CONSTRUCTION JOINTS SHALL BE CONSTRUCTED BY FLEXIBLE BASE PAVEMENTS AT LOCATIONS WHERE PAVEMENT JOINING EXISTING FLEXIBLE BASE PAVEMENT AS SHOWN BY THE DETAIL. ALL COSTS ASSOCIATED WITH THE CONSTRUCTION OF THE TRANSVERSE JOINT SHALL BE INCLUDED IN THE BID PRICE FOR SQUARE YARDS 8" ASPHALTIC CONCRETE (6" BITUMINOUS BASE).

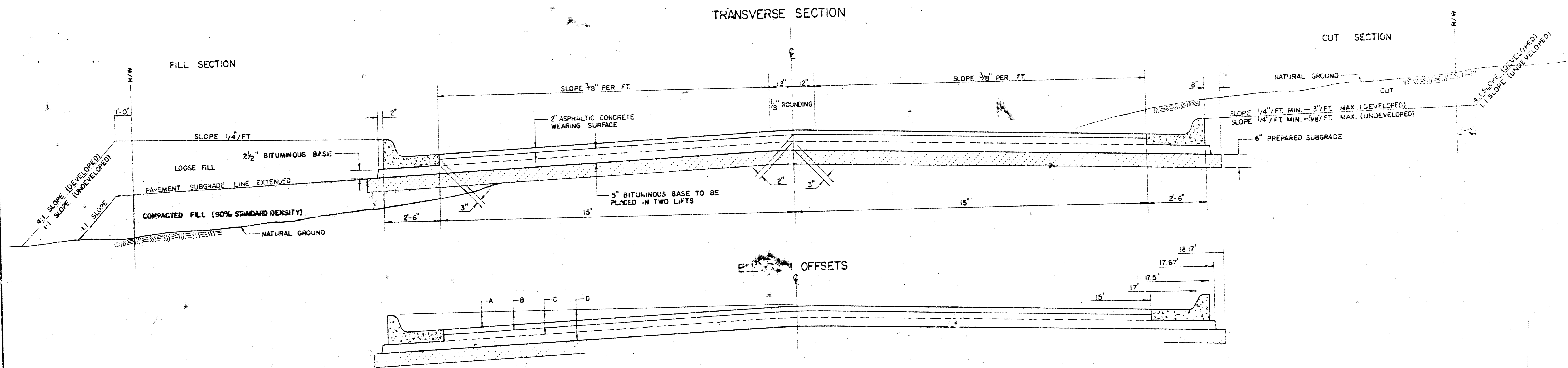
GENERAL NOTES

- 1) THE ASPHALTIC CONCRETE PAVEMENT BETWEEN THE COMBINED CURB AND GUTTER SHALL BE PAID AS SQUARE YARDS OF 8" ASPHALTIC CONCRETE (6" BITUMINOUS BASE).
- 2) THE BITUMINOUS BASE UNDER AND BEHIND THE COMBINED CURB AND GUTTER SHALL BE PAID AS SQUARE YARDS OF 3" BITUMINOUS BASE.
- 3) A TACK COAT OF EMULSIFIED ASPHALT (SC-1H OR CS-1H) SHALL BE APPLIED AT AN APPROXIMATE RATE OF 0.05 GALLONS PER SQUARE YARD BETWEEN EACH LIFT OF ASPHALTIC MATERIAL.
- 4) BITUMINOUS BASE AND ASPHALTIC CONCRETE WEARING SURFACE SHALL BE PLACED WITH A LAYDOWN MACHINE HAVING AUTOMATIC CONTROLS FOR LINE AND GRADE.
- 5) CONSTRUCTION JOINTS IN EACH LIFT SHALL BE STAGGERED A MINIMUM DISTANCE OF ONE (1) FOOT FROM JOINTS IN PRECEDING LIFTS AND PLACED SO THAT A JOINT WILL BE CONSTRUCTED ON THE CENTERLINE OF THE TOP LIFT.
- 6) CONTRACTOR TO BID ONLY ONE SUBGRADE TREATMENT ALTERNATE WHEN ALTERNATES ARE PROVIDED IN THE PROPOSAL AND CONTRACT. THE ALTERNATE CHOSEN BY THE SUCCESSFUL BIDDER SHALL BE USED IN CONSTRUCTING THIS PROJECT.



8 INCH RESIDENTIAL ASPHALTIC CONCRETE PAVEMENT WITH 6 INCH BITUMINOUS BASE
 CITY OF WICHITA, KANSAS
 PROJECT NUMBER
 472-76-245-81140-000-000-001

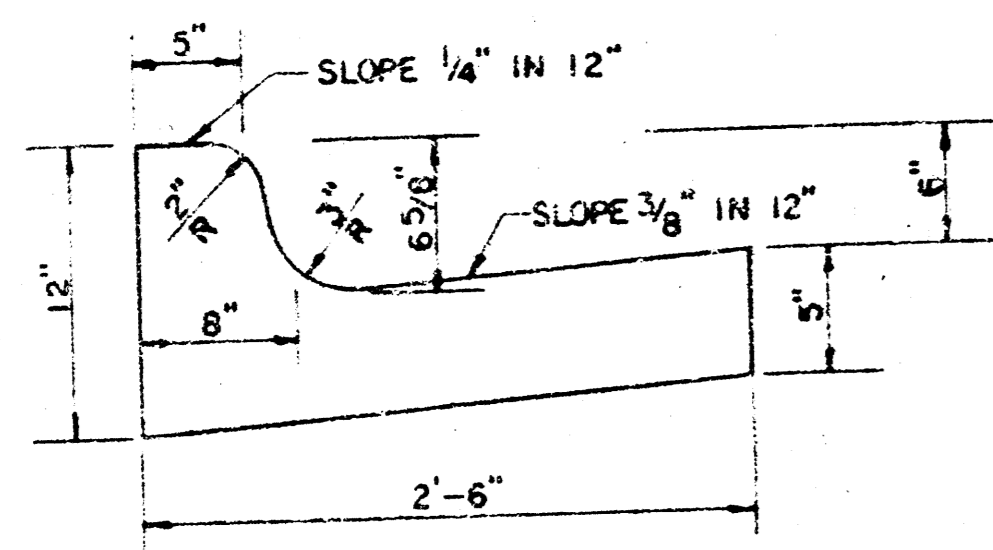
TYPICAL 35' PAVEMENT DETAILS



TRANSVERSE OFFSETS

	DISTANCE FROM CENTERLINE (LT. & RT.)												
	0'	2'	4'	6'	8.5'	10'	12'	14'	15'	17'	17.5'	17.67'	18.17'
A: TOP OF CURBS TO TOP OF SURFACE LIFT	0.04	0.08	0.14	0.21	0.29	0.33	0.39	0.46	0.49	—	—	—	—
B: TOP OF CURBS TO TOP OF UPPER BASE LIFT	0.21	0.25	0.31	0.37	0.45	0.50	0.56	0.62	0.65	—	—	—	—
C: TOP OF CURBS TO TOP OF LOWER BASE LIFT	0.37	0.43	0.50	0.57	0.67	0.72	0.79	0.87	0.90	0.98	1.00	1.00	—
D: TOP OF CURBS TO TOP OF SUBGRADE	0.62	0.67	0.74	0.81	0.90	0.95	1.02	1.08	1.12	1.19	1.21	1.21	1.23

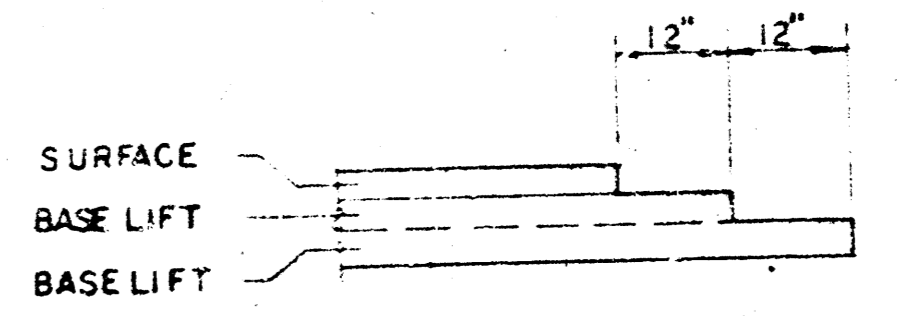
COMBINED CURB & GUTTER



GENERAL NOTES

- 1) THE ASPHALTIC CONCRETE PAVEMENT BETWEEN THE COMBINED CURB AND GUTTER SHALL BE PAID AS SQUARE YARDS OF 2" ASPHALTIC CONCRETE (5" BITUMINOUS BASE).
- 2) THE BITUMINOUS BASE UNDER AND BEHIND THE COMBINED CURB AND GUTTER SHALL BE PAID AS SQUARE YARDS OF 2 1/2" BITUMINOUS BASE.
- 3) A TACK COAT OF EMULSIFIED ASPHALT (SC-1H OR CSS-1H) SHALL BE APPLIED AT AN APPROXIMATE RATE OF 0.05 GALLONS PER SQUARE YARD BETWEEN EACH LIFT OF ASPHALTIC MATERIAL.
- 4) BITUMINOUS BASE AND ASPHALTIC CONCRETE WEARING SURFACE SHALL BE PLACED WITH A LAYDOWN MACHINE HAVING AUTOMATIC CONTROLS FOR LINE AND GRADE.
- 5) CONSTRUCTION JOINTS IN EACH LIFT SHALL BE STAGGERED A MINIMUM DISTANCE OF ONE (1) FOOT FROM JOINTS IN PRECEDING LIFTS AND PLACED SO THAT A JOINT WILL BE CONSTRUCTED ON THE CENTERLINE OF THE TOP LIFT.
- 6) CONTRACTOR TO BID ONLY ONE SUBGRADE TREATMENT ALTERNATE WHEN ALTERNATES ARE PROVIDED IN THE PROPOSAL AND CONTRACT. THE ALTERNATE CHOSEN BY THE SUCCESSFUL BIDDER SHALL BE USED IN CONSTRUCTING THIS PROJECT.

TRANSVERSE CONSTRUCTION JOINTS



CONSTRUCTION JOINTS SHALL BE CONSTRUCTED IN EACH LIFT OF ASPHALTIC CONCRETE AND BITUMINOUS BASE. THE JOINTS SHALL BE PLACED AT THE CENTERLINE OF THE JOINTS. THE JOINTS SHALL BE PLACED AT THE CENTERLINE OF THE JOINTS. THE JOINTS SHALL BE PLACED AT THE CENTERLINE OF THE JOINTS.

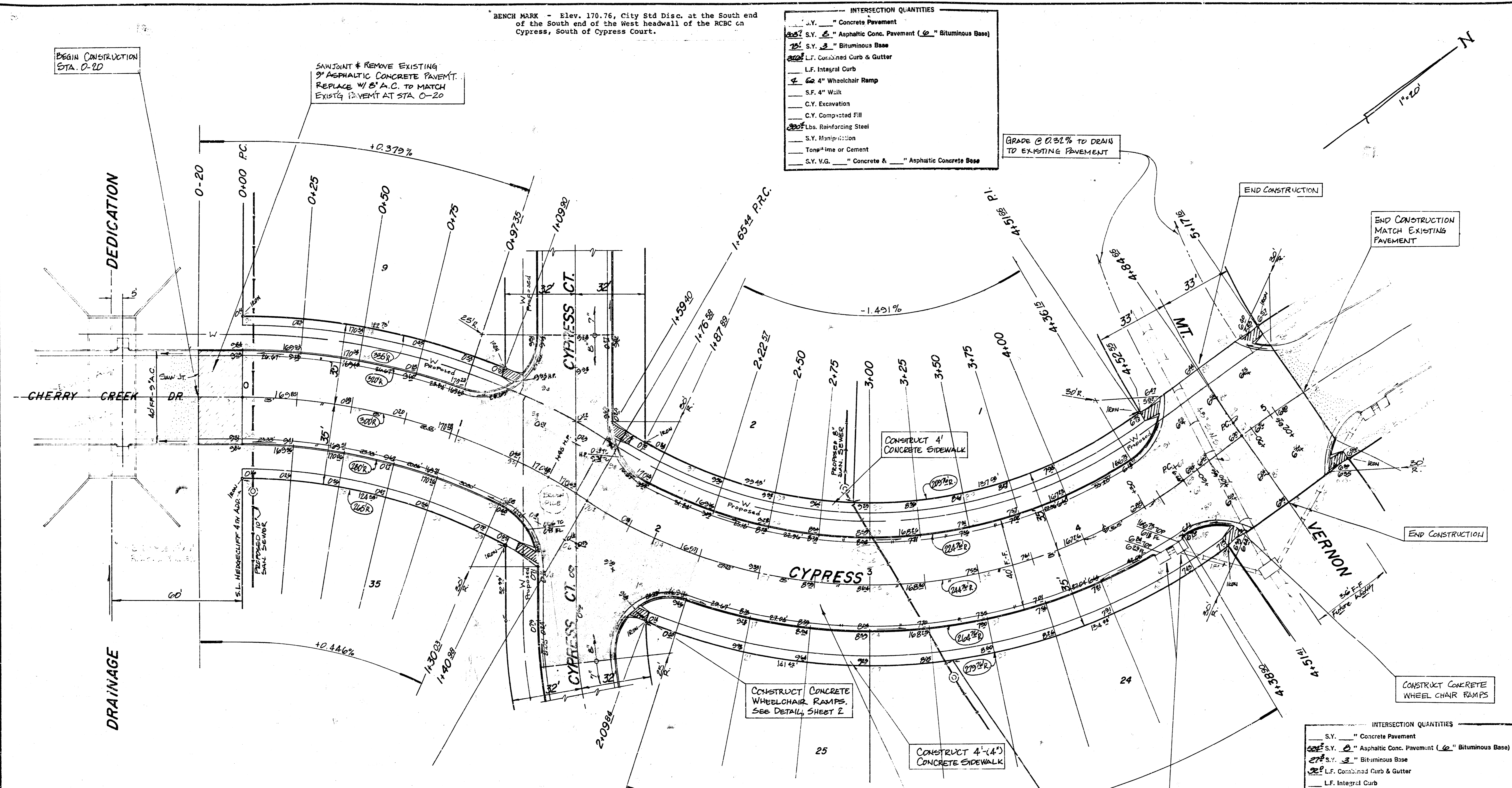
7 INCH RESIDENTIAL ASPHALTIC CONCRETE PAVEMENT WITH 5 INCH BITUMINOUS BASE
 CITY OF WICHITA, KANSAS
 PROJECT NUMBER
 472-76-245-81140-000-001 3/12

BENCH MARK - Elev. 170.76, City Std Disc. at the South end of the South end of the West headwall of the RCBC on Cypress, South of Cypress Court.

INTERSECTION QUANTITIES

- 1.0 S.Y. Concrete Pavement
- 1.0 S.Y. 6" Asphaltic Conc. Pavement (6" Bituminous Base)
- 1.0 S.Y. 3" Bituminous Base
- 1.0 L.F. Combined Curb & Gutter
- 1.0 L.F. Integral Curb
- 1.0 4" Wheelchair Ramp
- 1.0 S.F. 4" Walk
- 1.0 C.Y. Excavation
- 1.0 C.Y. Compacted Fill
- 1.0 Lbs. Reinforcing Steel
- 1.0 S.Y. Manipulation
- 1.0 Tons Lime or Cement
- 1.0 S.Y. V.G. Concrete & Asphaltic Concrete Base

GRADE @ 0.31% TO DRAIN TO EXISTING PAVEMENT



CURVE NO. 1
 $\Delta = 31^{\circ}35'45''$ R=300' T=84.88' L=165.44' L.C.=168.35'
 CURVE DATA BASED ON Q RAD. $\frac{1}{2}\Delta = 15^{\circ}47'52''$

STA.	ARC	CHORD LENGTH		DEFL.	TOTAL DEFL.
0+00 P.C.		B' OFF LT. CA.	B' OFF RT. CA.		0°00'00"
0+25	25'	27.52'	22.66'	02°25'14"	2°25'14"
0+50	25'	27.52'	22.66'	04°25'14"	4°40'28"
0+75	25'	27.52'	22.66'	06°25'14"	7°05'42"
0+97.35	22.35'	24.43'	20.26'	08°08'04"	9°17'44"
1+30.03	32.68'	↓	23.02'	05°07'14"	12°25'00"
1+63.44	35.41'	14.28'	31.05'	03°22'52"	15°47'52"

DEFL. / FT. = 0.095493°

CURVE NO. 2
 $\Delta = 67^{\circ}00'03''$ R=244.76' T=162.01' L=286.22' L.C.=270.19'
 CURVE DATA BASED ON Q RAD. $\frac{1}{2}\Delta = 33^{\circ}50'01.5''$

STA.	ARC	CHORD LENGTH		DEFL.	TOTAL DEFL.
1+65.44 P.C.		B' OFF LT. CA.	B' OFF RT. CA.		0°00'00"
1+87.89	22.45'	19.88'	-	02°57'40"	2°57'40"
2+22.53	34.68'	30.63'	38.61'	04°05'35"	07°03'15"
2+50	27.45'	24.28'	30.55'	05°12'38"	09°55'51"
2+75	25'	22.15'	27.85'	06°25'34"	12°49'25"
3+00	25'	22.15'	27.85'	07°55'34"	15°44'59"
3+25	25'	22.15'	27.85'	09°25'34"	18°40'53"
3+50	25'	22.15'	27.85'	10°55'34"	21°36'07"
3+75	25'	22.15'	27.85'	12°25'34"	24°31'41"
4+00	25'	22.15'	27.85'	13°55'34"	27°27'15"
4+36.75	36.15'	31.98'	↓	14°15'52"	31°43'07"
4+38.35	2.75'	↓	23.50'	00°19'19"	32°02'26"
4+51.20 P.L.	12.76'	13.78'	14.22'	01°20'36"	33°23'02"

DEFL. / FT. = 0.117045°

EARTHWORK QUANTITIES		QUANTITIES	
EXCAVATION	= 3853.4 C.Y.	COMPACTED FILL	= 207.7 C.Y.
+ 10 #	= 385.3 C.Y.	+ 10 #	= 20.8 C.Y.
TOTAL	= 4238.7 C.Y.	TOTAL	= 228.5 C.Y.
MANIPULATION	= 566 C.S.Y.		

INTERSECTION QUANTITIES

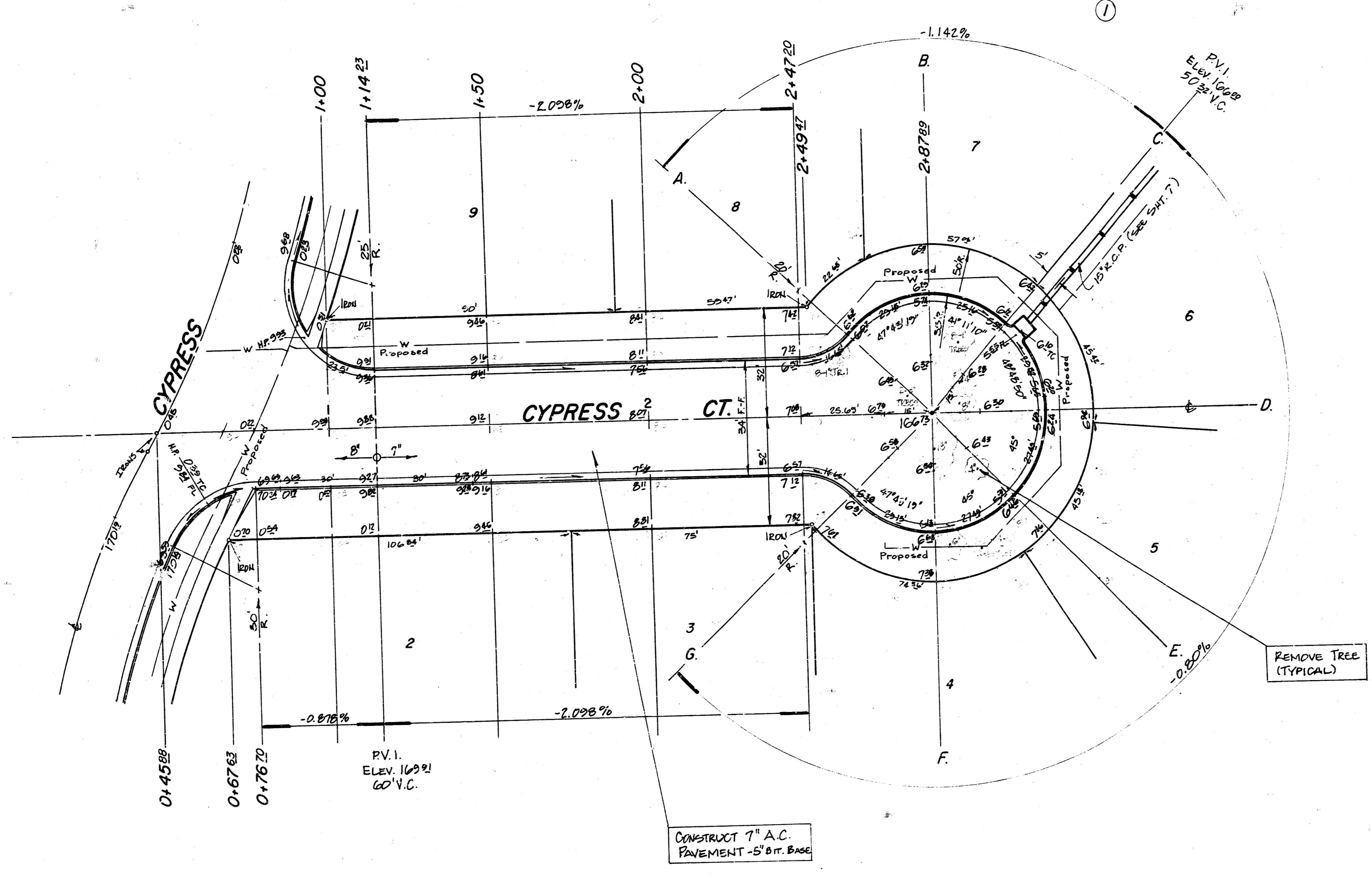
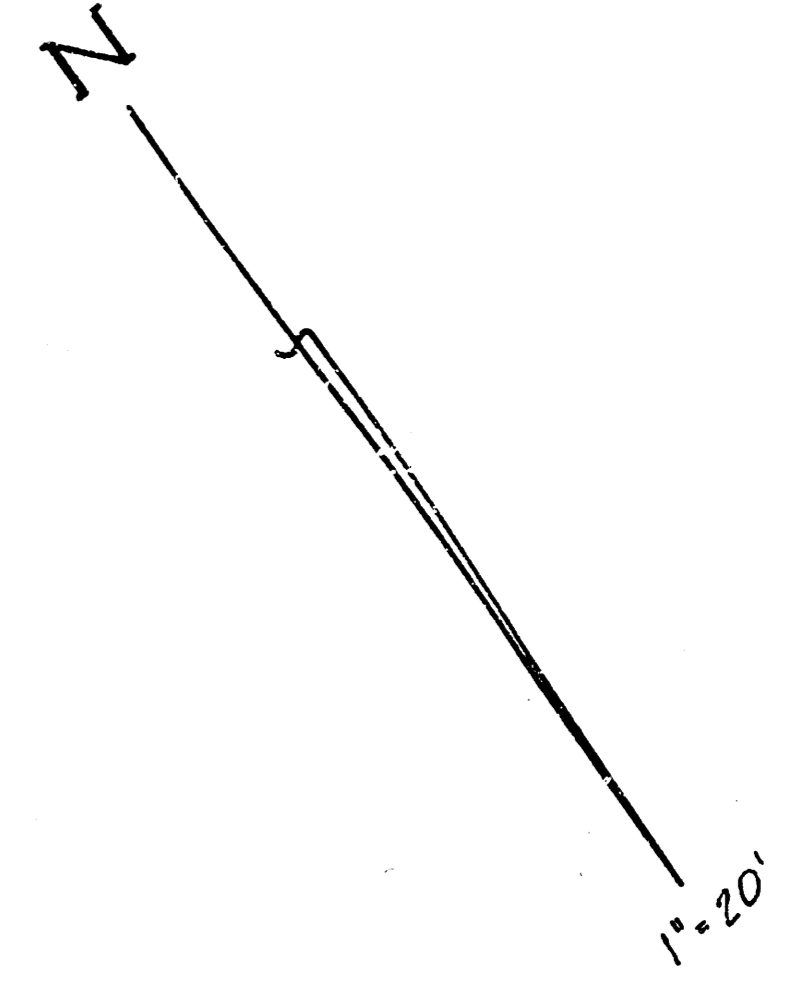
- 1.0 S.Y. Concrete Pavement
- 1.0 S.Y. 6" Asphaltic Conc. Pavement (6" Bituminous Base)
- 1.0 S.Y. 3" Bituminous Base
- 1.0 L.F. Combined Curb & Gutter
- 1.0 L.F. Integral Curb
- 1.0 4" Wheelchair Ramp
- 1.0 S.F. 4" Walk
- 1.0 C.Y. Excavation
- 1.0 C.Y. Compacted Fill
- 1.0 Lbs. Reinforcing Steel
- 1.0 S.Y. Manipulation
- 1.0 Tons Lime or Cement
- 1.0 S.Y. V.G. Concrete & Asphaltic Concrete Base

NOTE: NO DRIVES TO BE CONSTRUCTED ON THIS PROJECT.

CYPRESS

Proj. no. 472-76-245-81140-000-000-001

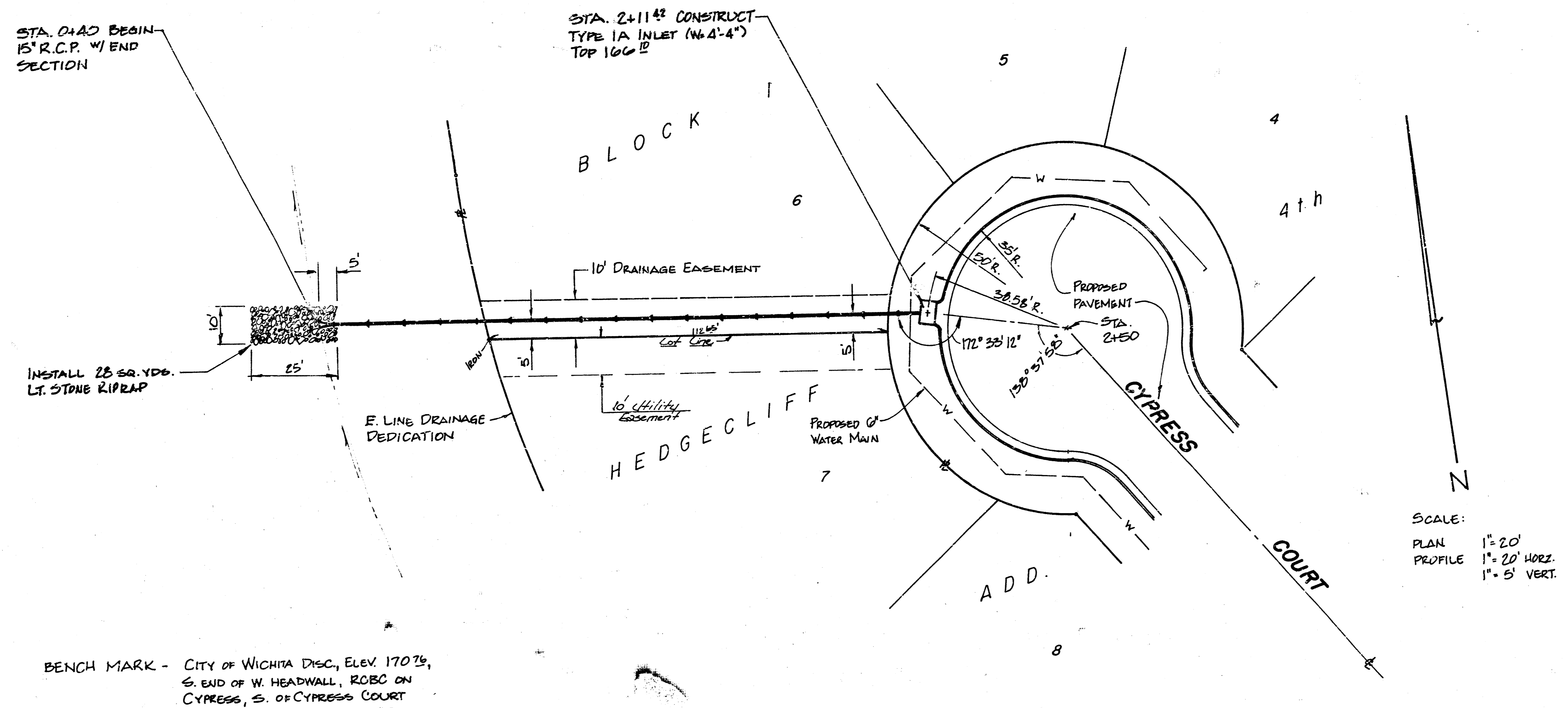
4/12



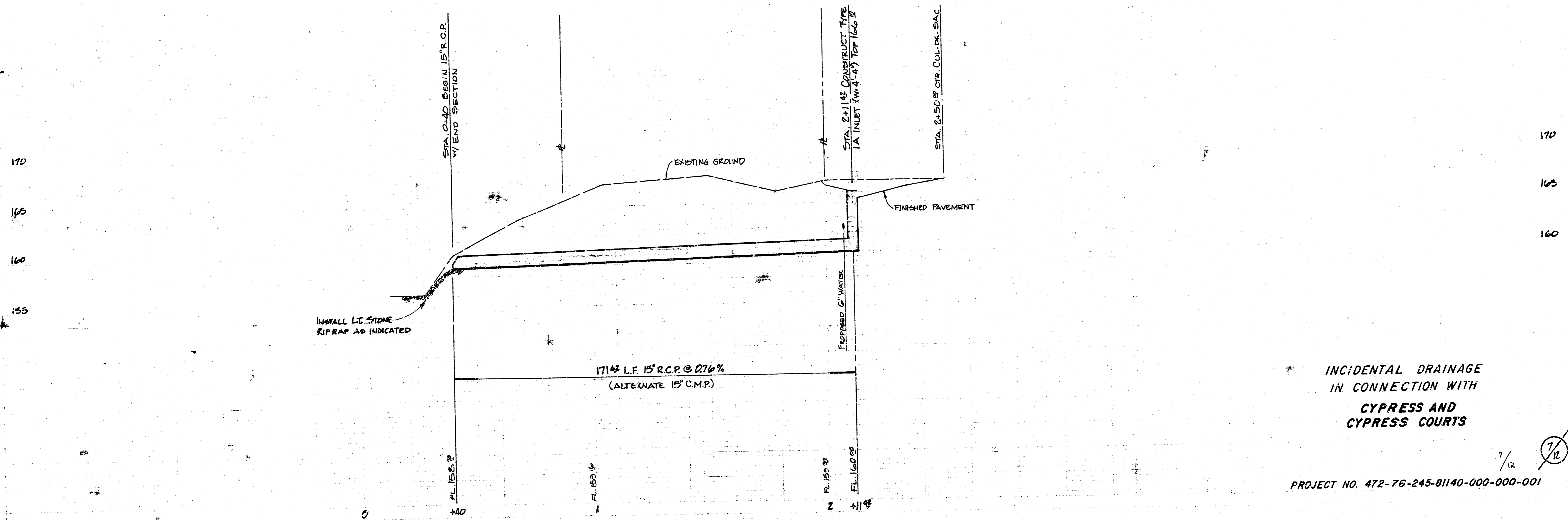
CYPRESS COURT
BLOCK 1.

Proj. no. 472-76-245-81140-000-001

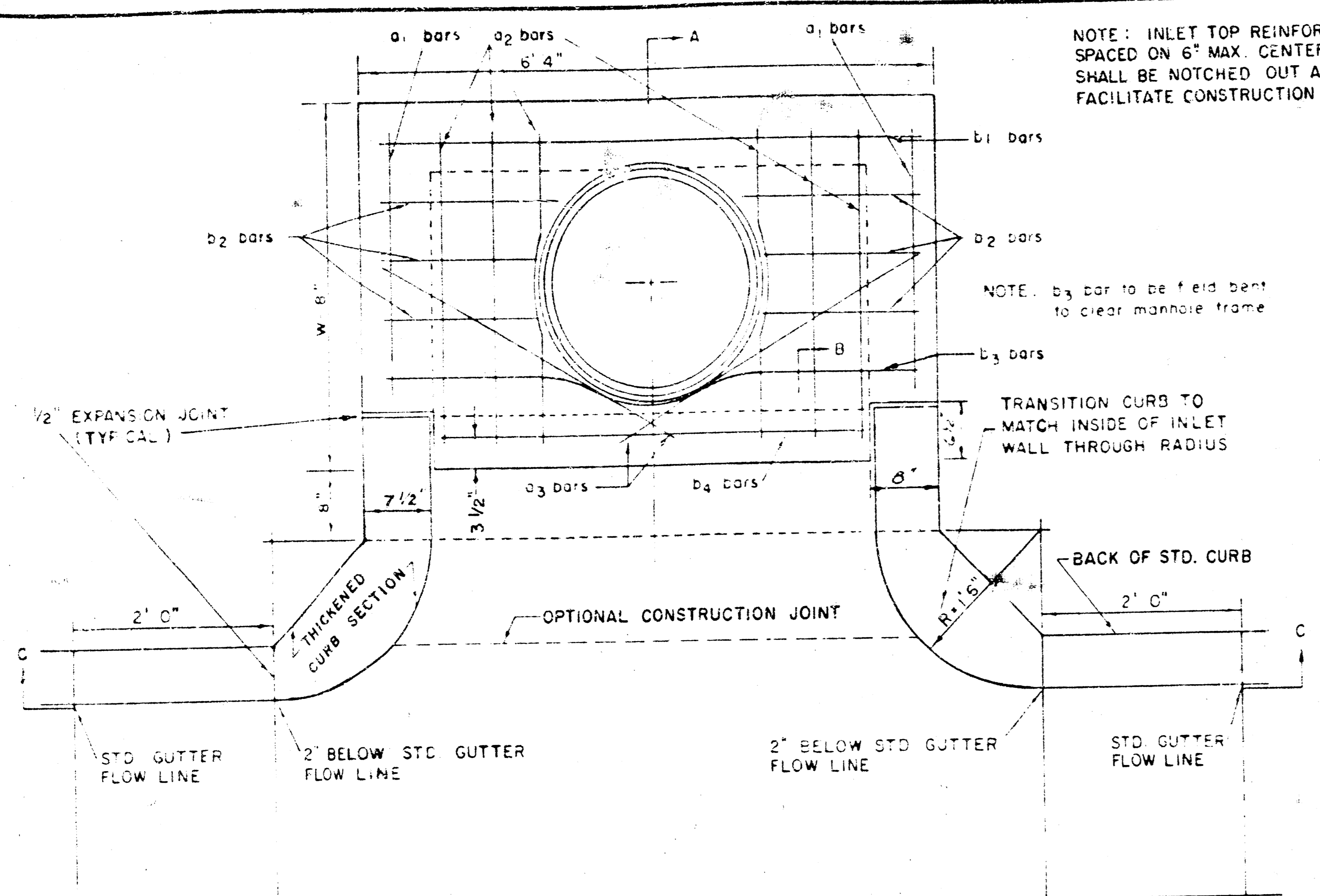
5/12



BENCH MARK - CITY OF WICHITA DISC, ELEV. 170.75,
 S. END OF W. HEADWALL, ROBC ON
 CYPRESS, S. OF CYPRESS COURT



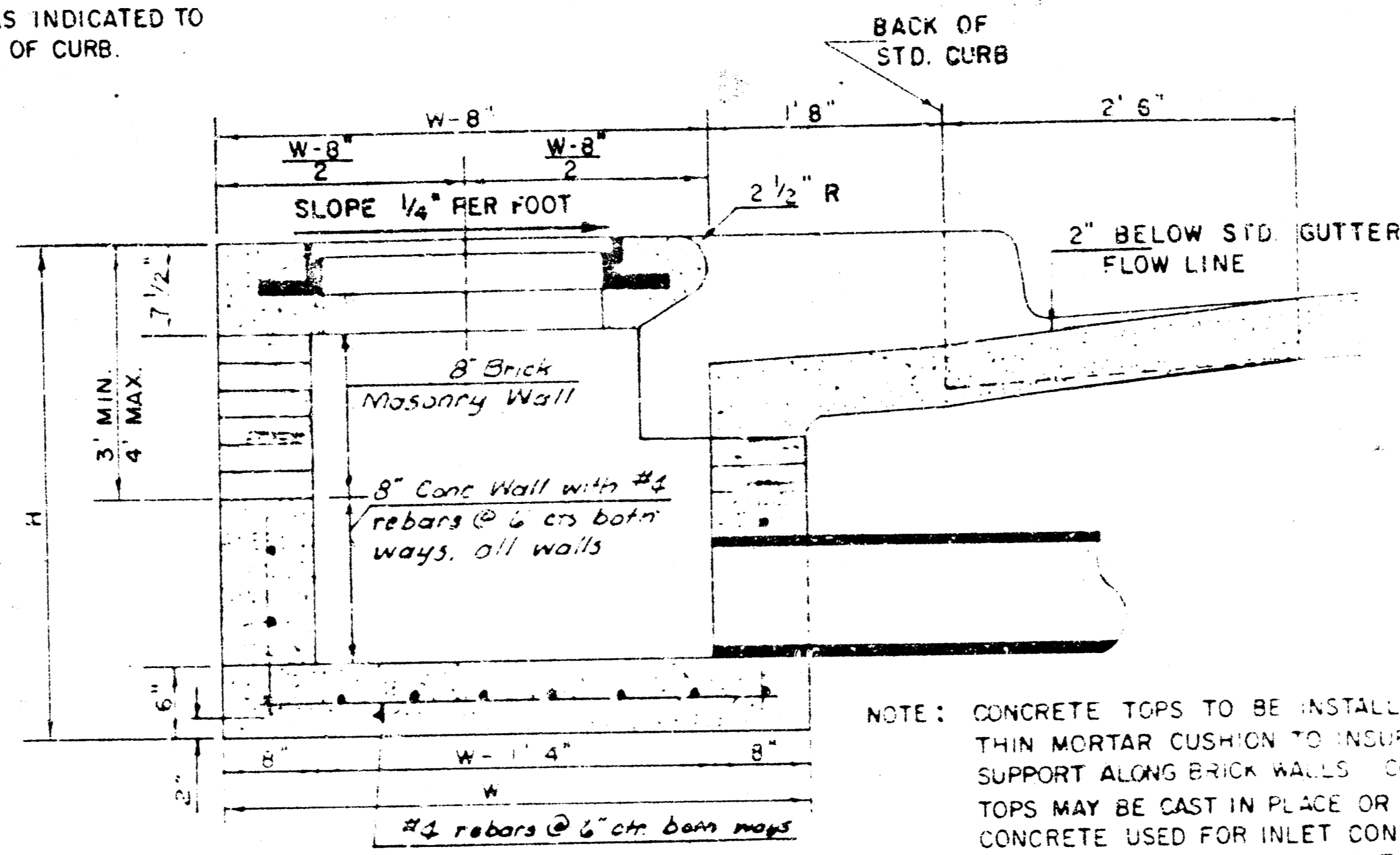
INCIDENTAL DRAINAGE
 IN CONNECTION WITH
 CYPRESS AND
 CYPRESS COURTS
 PROJECT NO. 472-76-245-81140-000-000-001



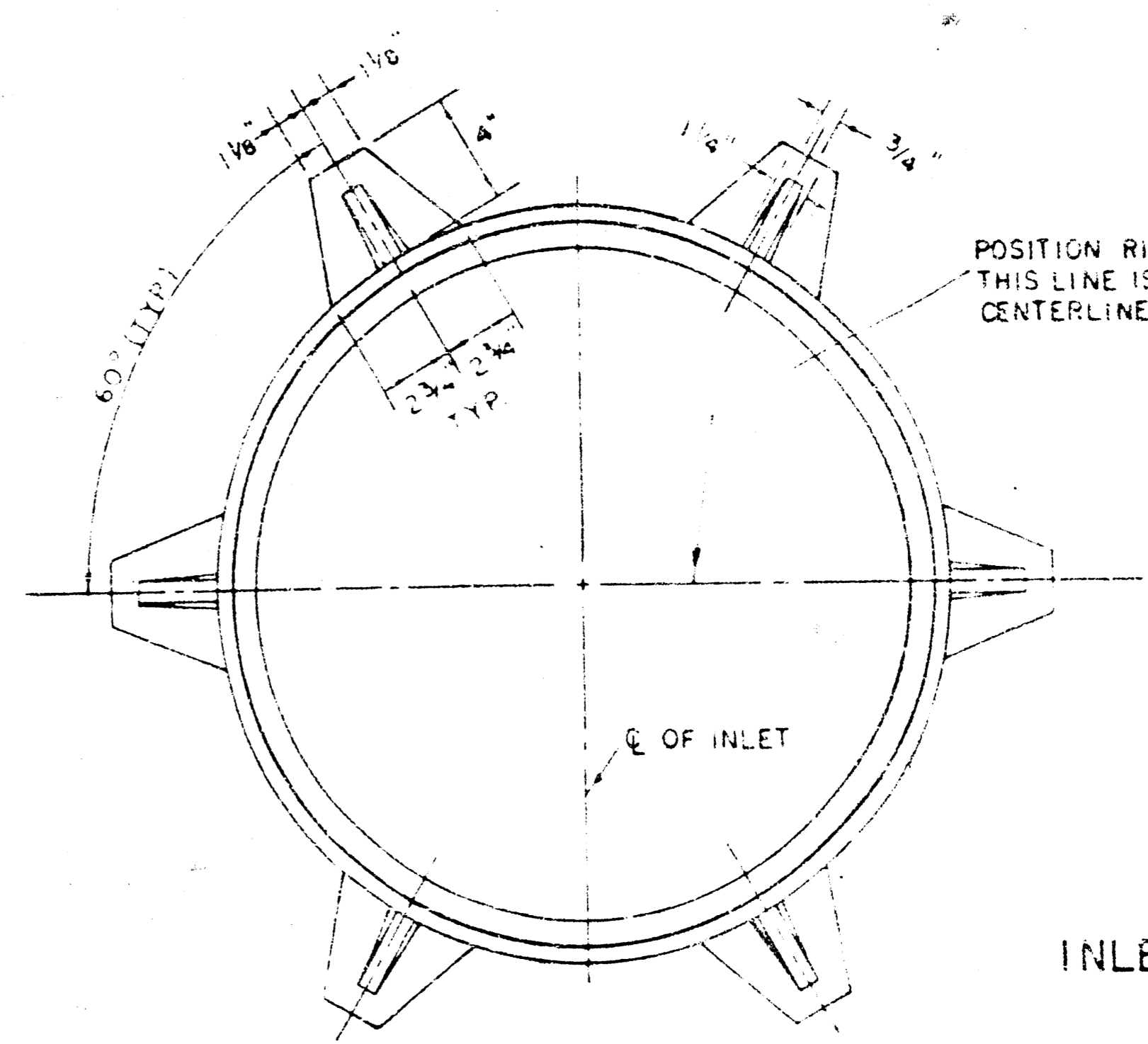
NOTE: INLET TOP REINFORCING SHALL BE SPACED ON 6" MAX. CENTERS. INLET LIDS SHALL BE NOTCHED OUT AS INDICATED TO FACILITATE CONSTRUCTION OF CURB.

NOTE: b₃ bar to be field bent to clear manhole frame.

TRANSITION CURB TO MATCH INSIDE OF INLET WALL THROUGH RADIUS.

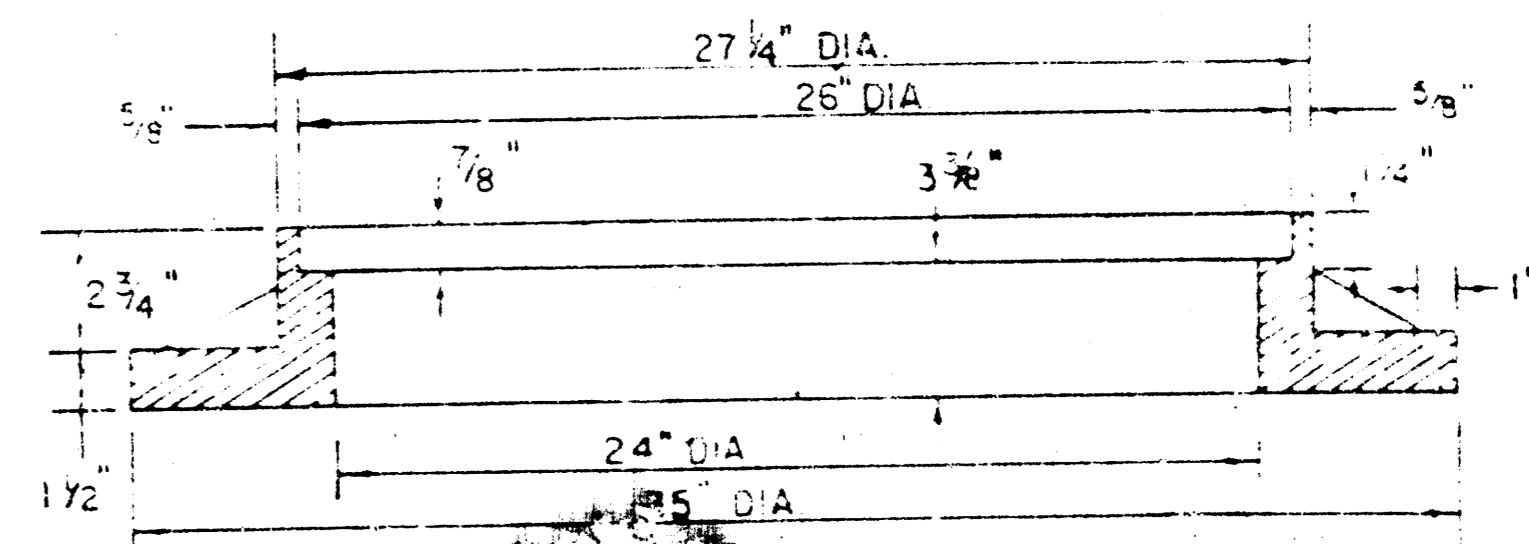


NOTE: CONCRETE TOPS TO BE INSTALLED ON THIN MORTAR CUSHION TO INSURE FULL SUPPORT ALONG BRICK WALLS. CONCRETE TOPS MAY BE CAST IN PLACE OR PRECAST. CONCRETE USED FOR INLET CONSTRUCTION SHALL BE CONCRETE PAVEMENT MIX.



POSITION RING SUCH THAT THIS LINE IS PARALLEL WITH CENTERLINE OF PAVEMENT.

WEIGHT = 160 LBS.



SEE CITY OF WICHITA STANDARD MANHOLE FRAME AND COVER DETAIL SHEET FOR COVER DETAILS TO BE USED WITH INLET FRAME.

PLAN

BENDING DIAGRAM

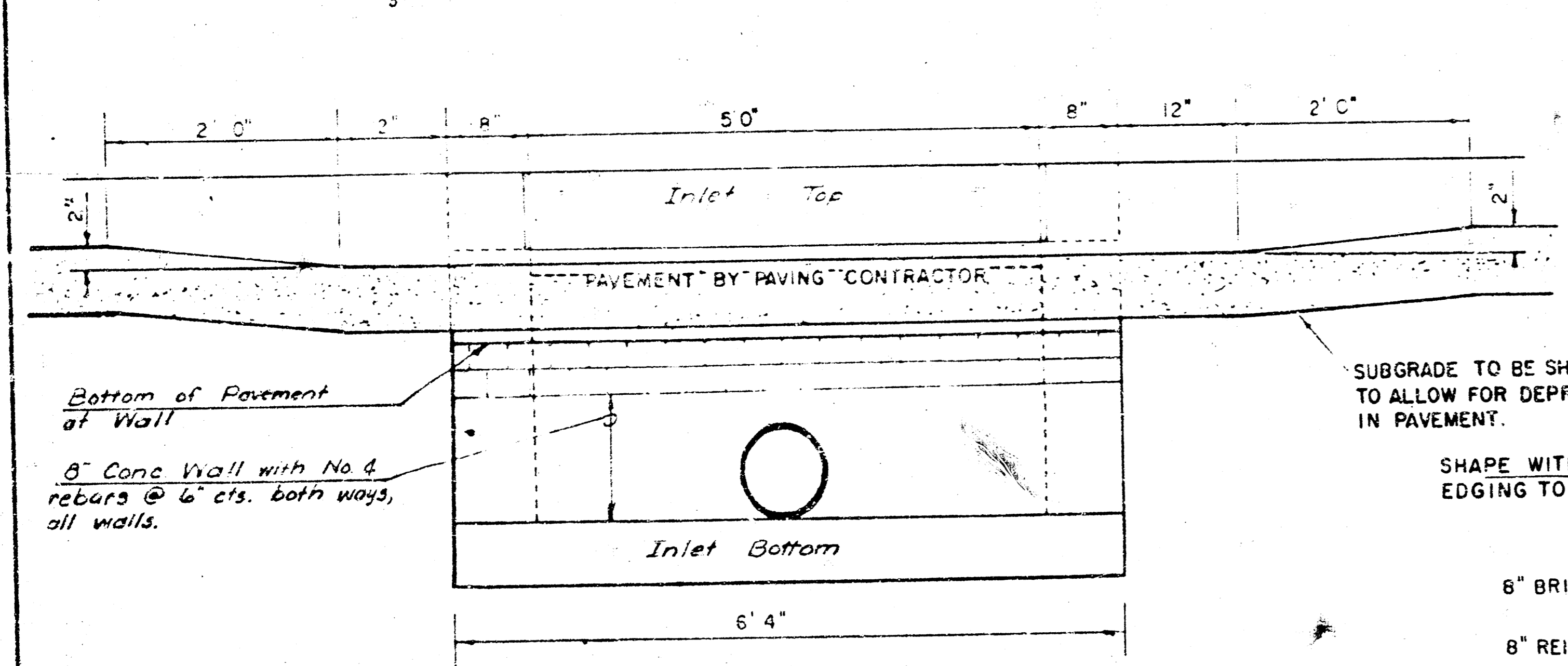
STEEL SCHEDULE

BAR	a ₁	a ₂	c ₁	c ₂	c ₃	b ₁	b ₂	b ₃	b ₄	WT LBS
NUMBER	4	4	2	2	2	5	5	6	1	
SIZE	#4	#4	#4	#4	#4	#4	#4	#4	#4	#6
LENGTH	W+4' 7 1/2"	8' 3"	4' 0"	6' 1"	-	-	-	1' 9"	6' 2"	14' 8"
	69#									83#
	W+6' 4"	11' 1"	12' 3"	6' 0"	-	-	-	1' 9"	6' 2"	14' 8"
	130#									130#
	W+8' 4"	15' 1"	16' 3"	8' 0"	-	-	-	1' 9"	6' 2"	14' 8"
	150#									150#

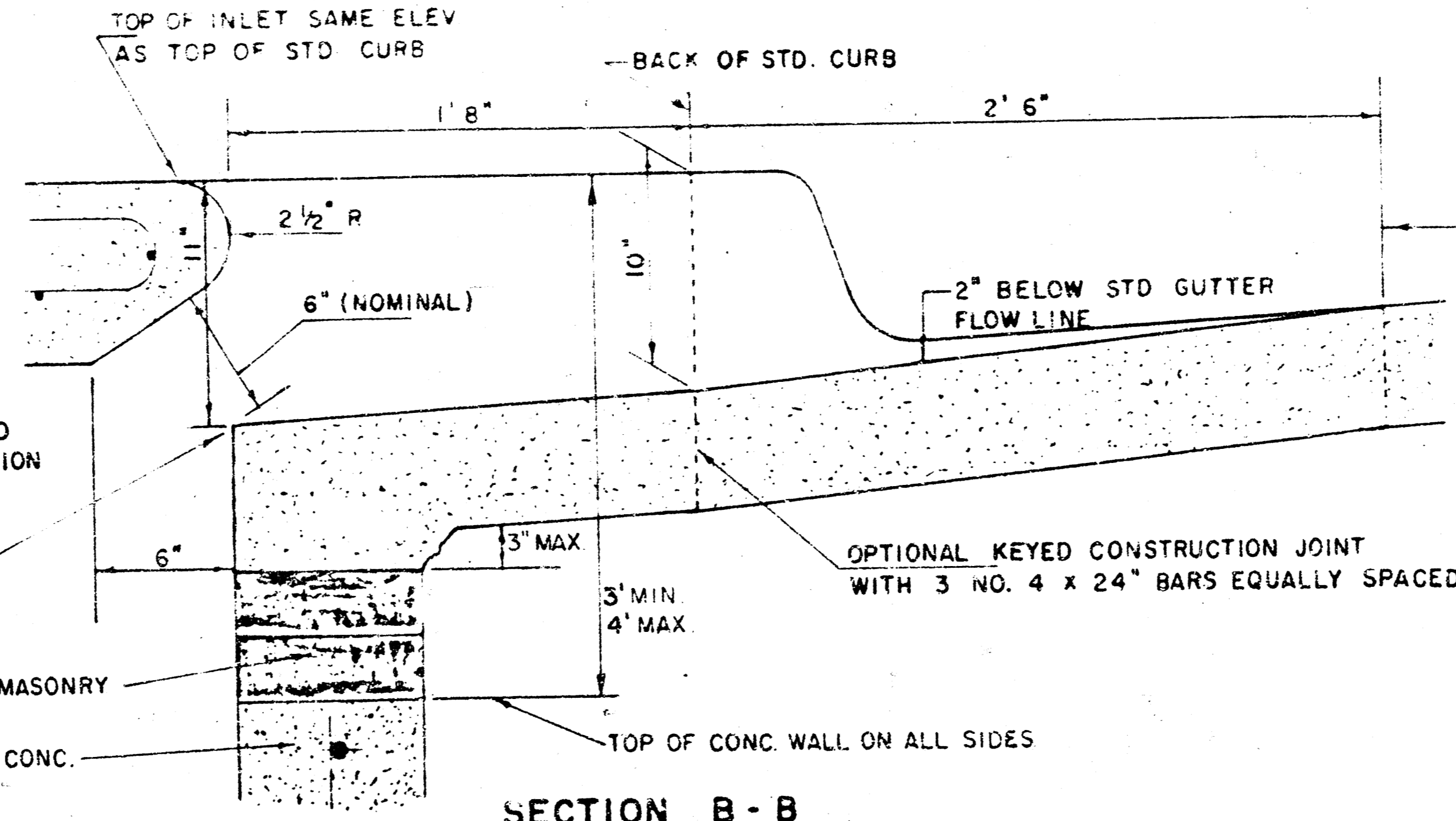
NOTE: c₃ BARS TO BE PLACED APPROX 2' BELOW TOP OF INLET COVER

STANDARD CURB INLET PRECAST TOPS

W	PRE-CAST TOP SIZE	PIPE SIZE	CU YD CONC.
4' 4"	38" x 64" x 7 1/2"	21" B SMALLER	0.38
5' 4"	48" x 64" x 7 1/2"	24" B 30"	0.51
6' 4"	58" x 64" x 7 1/2"	36" B 42"	0.64
7' 4"	68" x 64" x 7 1/2"	48" B 54"	0.77
8' 4"	78" x 64" x 7 1/2"	60" B 66"	0.90



SECTION C-C



SECTION B-B

Project no. 472-76-245-81140-000-000-001

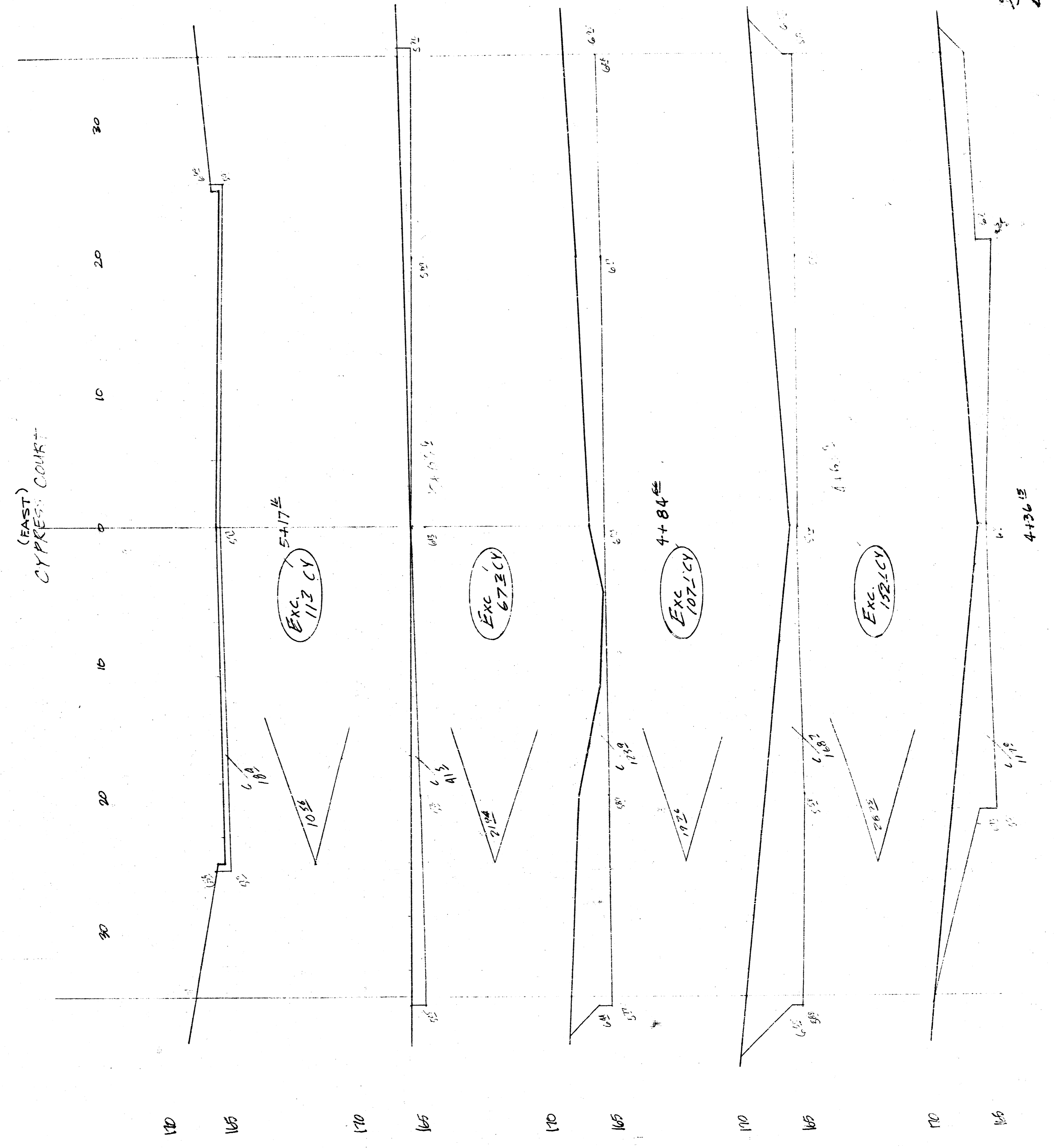
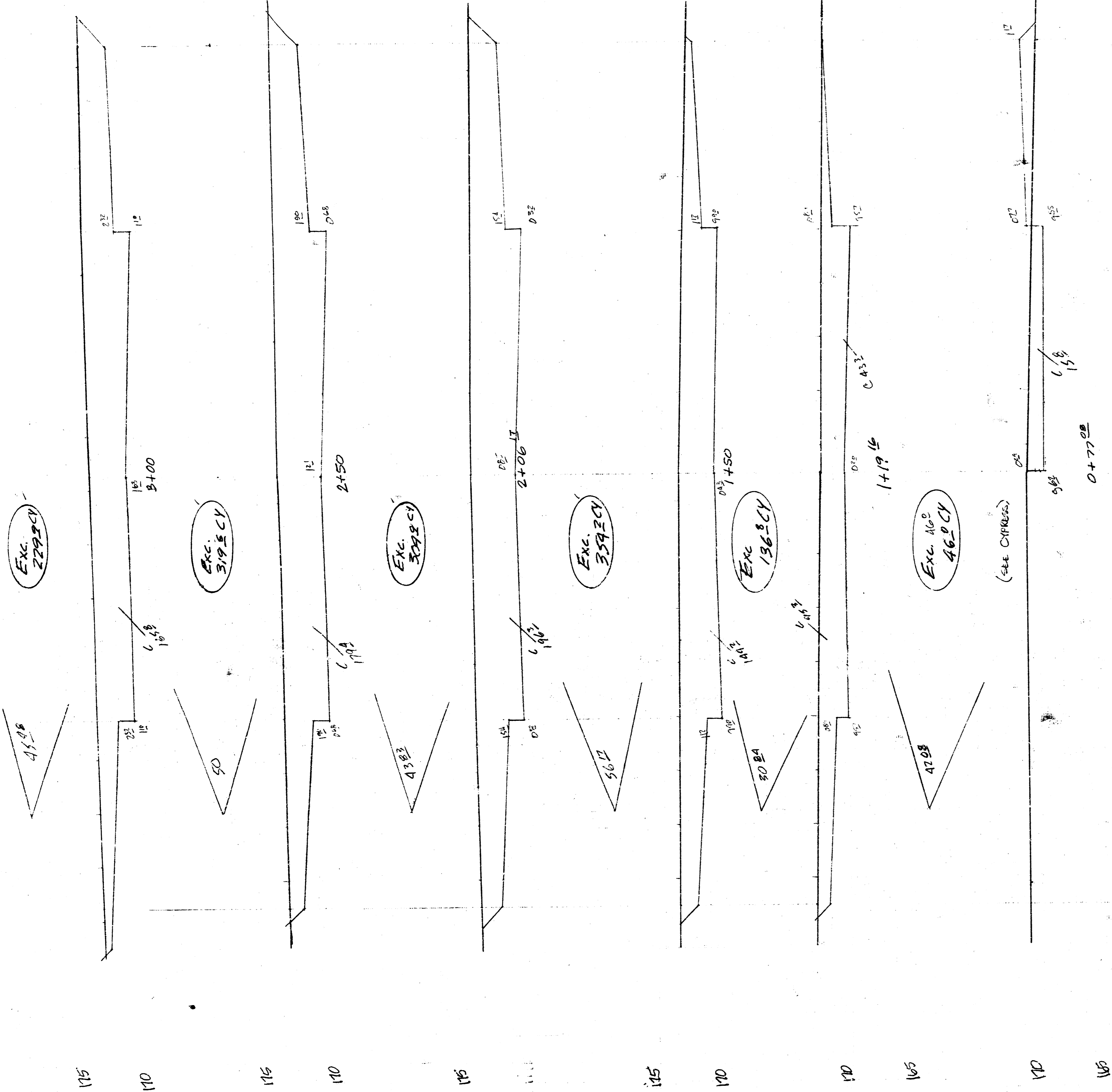
DETAIL STANDARD TYPE IA CURB INLET

CITY OF WICHITA, KANSAS

INLET OPENING = 6" x 5' 0"

MARCH 1984

3+45.45

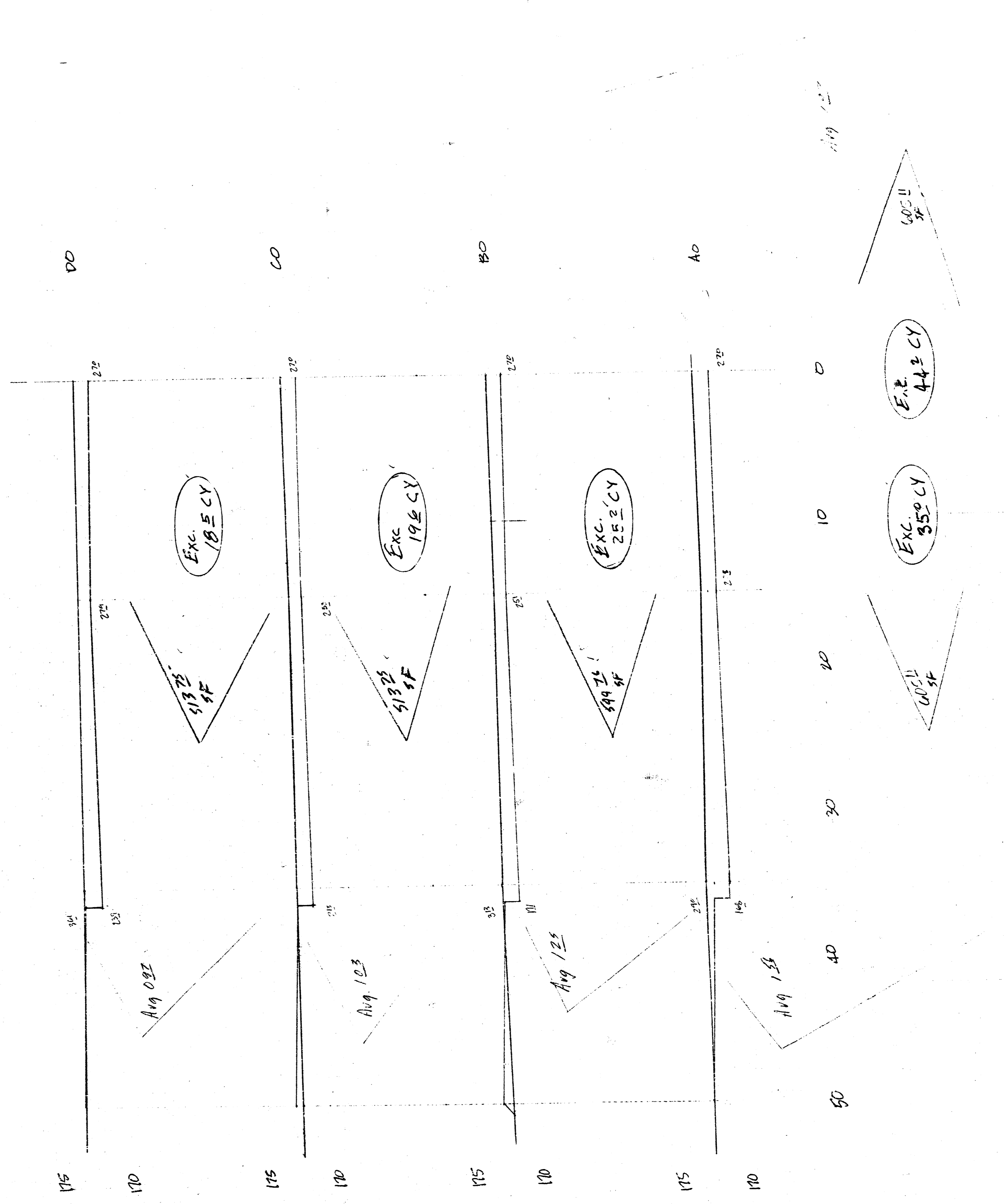
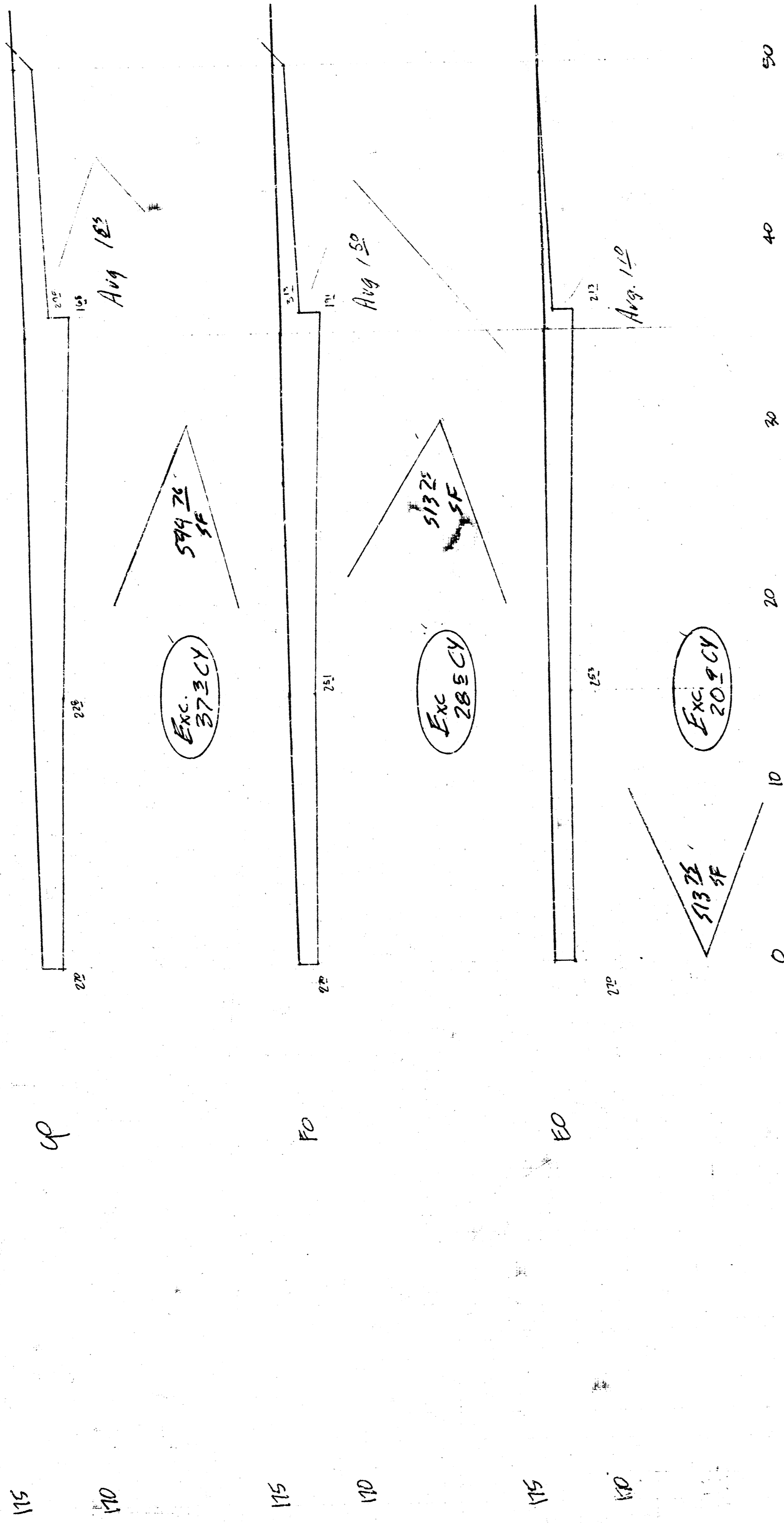


SHEET TOTAL
 EXC. 17293 C.Y.

CYPRESS COURT
 LOTS 25-35, BLK. 2,
 HEDGECLIFF 4TH ADD.
 PROJ. NO. 472-76-245-81140-000-000-001

10/12

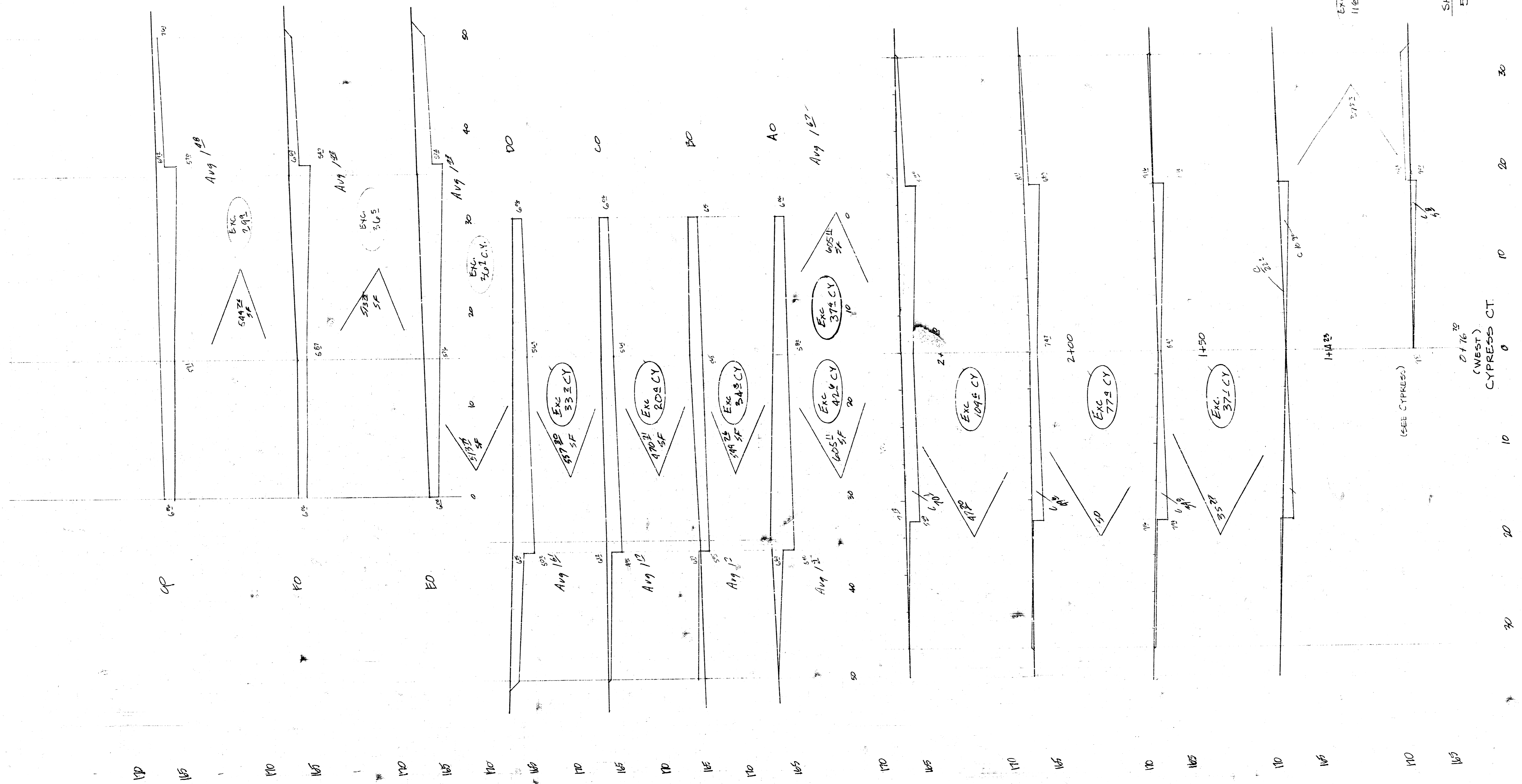
FILMED FROM THE BEST



SHEET TOTAL
Exc 229.5 CY

CYPRESS COURT
LOTS 25-35, BLK. 2,
HEDGECLIFF 4TH ADD.
PRJ. NO. 472-76-245-81140-000-000-001

11/12



SHEET TOTAL
5017 C.Y. EXCAV.

EARTHWORK TOTALS
EXCAVATION 3853 1/2 C.Y.
COMPACTED FILL 1212 C.Y.

CYPRESS COURT
LOTS 2-9, BLK. 1, HEDGECLIFF 4TH ADD.
14 8 3 10
PROJ. NO. 472-76-245-81140-000-000-001

0116 SF
(WEST)
CYPRESS CT. 0 10 20 30