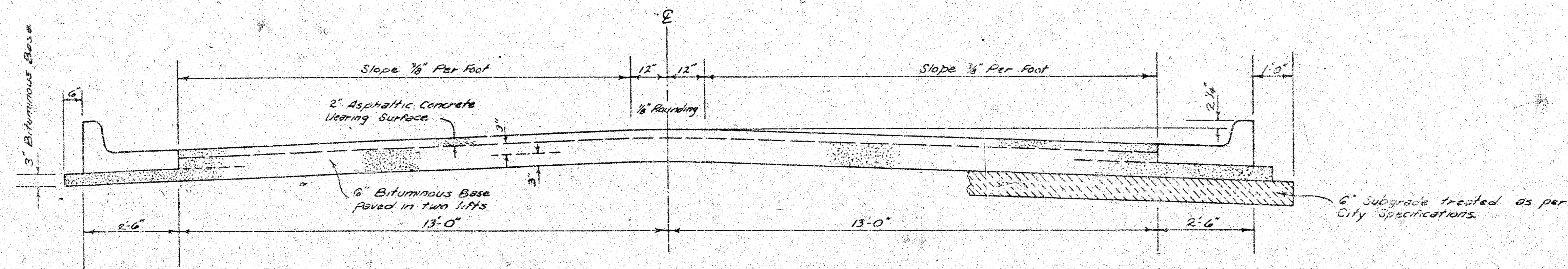


**DALTON DRIVE**  
 N.L. Zimmerly E. to the N.L. lot 43, Bk. 2, Quail Meadows 4th Addition  
**& LINCOLN STREET**  
 E.L. lot 14, Levitts Plat in Sunnybrook to the E.L. Dalton Drive

Proj. No. DAKS 575070



**TYPICAL SECTION**

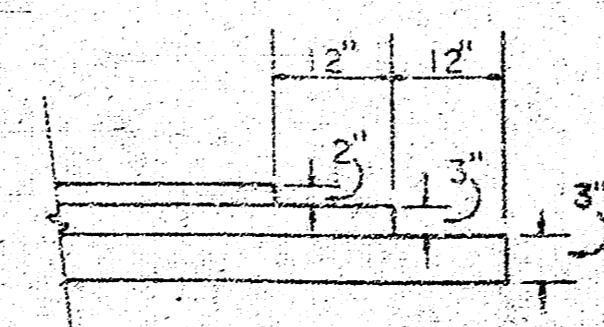
31' ASPHALTIC CONCRETE PAVEMENT WITH BITUMINOUS BASE

*The A.C. pavement between the Comb. Curb & gutter shall be paid as So. No. 8" A.C. Pavement (6" Bituminous Base). The Bituminous Base under the Comb. Curb & gutter shall be paid as So. Yes. 3" Bituminous Base.*

A TACK COAT OF EMULSIFIED ASPHALT (SS-IH) SHALL BE APPLIED AT AN APPROXIMATE RATE OF 0.05 GALLONS PER SQ. YD. BETWEEN LIFTS OF ASPHALTIC MATERIALS WHEN ORDERED BY THE ENGINEER. TACK COAT WILL NOT BE PAID FOR DIRECTLY AND SHALL BE CONSIDERED AS SUBSIDIARY TO PRICE BID FOR ASPHALTIC PAVEMENT.

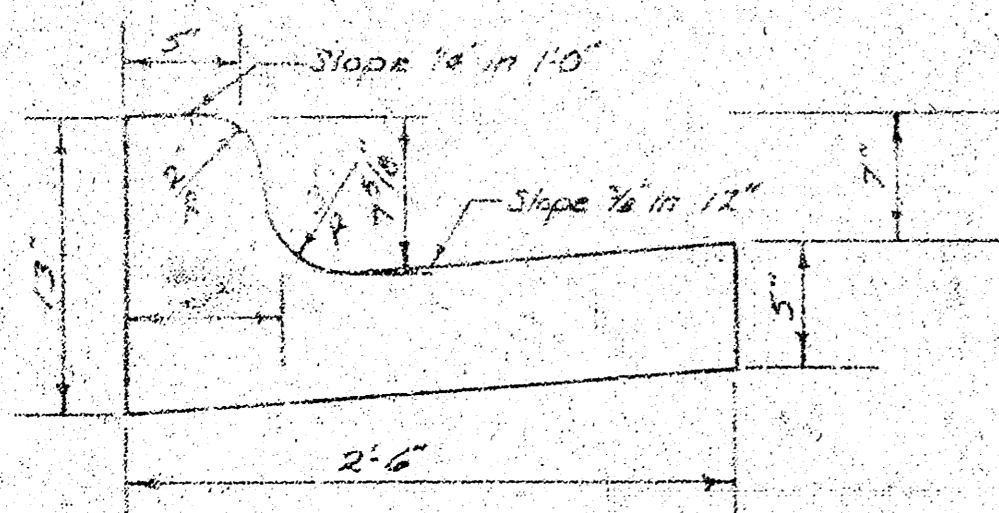
BITUMINOUS BASE AND ASPHALTIC CONCRETE WEARING SURFACE SHALL BE PLACED WITH A LAYDOWN MACHINE HAVING AUTOMATIC ELECTRONIC CONTROLS FOR CROWN AND GRADE. CONSTRUCTION JOINTS IN EACH LIFT SHALL BE STAGGERED A MINIMUM DISTANCE OF 1' WITH JOINTS IN PRECEDING LIFTS AND SUCH THAT A JOINT WILL BE CONSTRUCTED ON THE PAVEMENT CENTERLINE IN THE TOP LIFT.

**DETAIL OF TRANSVERSE CONSTRUCTION JOINTS**

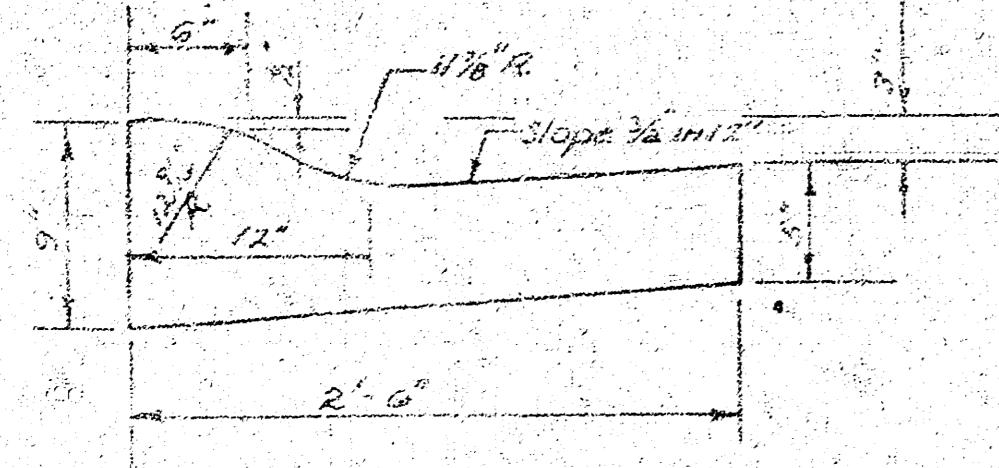


TRANSVERSE CONSTRUCTION JOINTS SHALL BE CONSTRUCTED IN FLEXIBLE BASE PAVEMENTS AT LOCATIONS WHERE PAVEMENT TEMPORARILY ENDS TO FACILITATE FUTURE PAVEMENT CONSTRUCTION AS SHOWN BY DETAIL. THE COST OF CONSTRUCTING THE TRANSVERSE CONSTRUCTION JOINTS SHALL NOT BE MEASURED OR PAID FOR DIRECTLY BUT SHALL BE INCLUDED IN THE BID PRICE FOR SQUARE YARDS OF ASPHALTIC CONCRETE PAVEMENT.

**COMBINED CURB & GUTTER**



**ROLL TYPE CURB & GUTTER**



CITY OF WICHITA, KANSAS

DEPARTMENT OF PUBLIC WORKS — ENGINEERING

R. W. LINN CITY ENGINEER

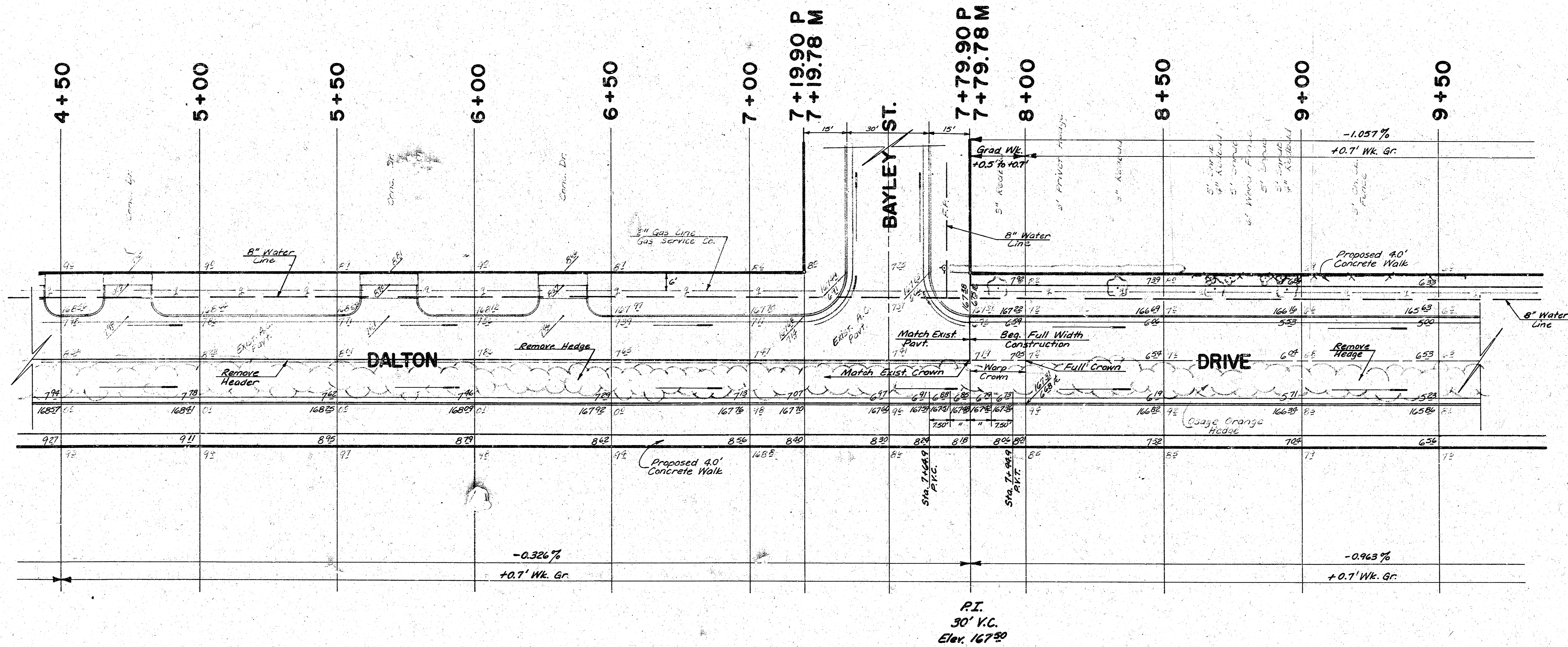
DATE: Nov 1976 PROJ. NO. DAKS 575070

14

FILMED FROM THE BEST AVAILABLE COPY.....




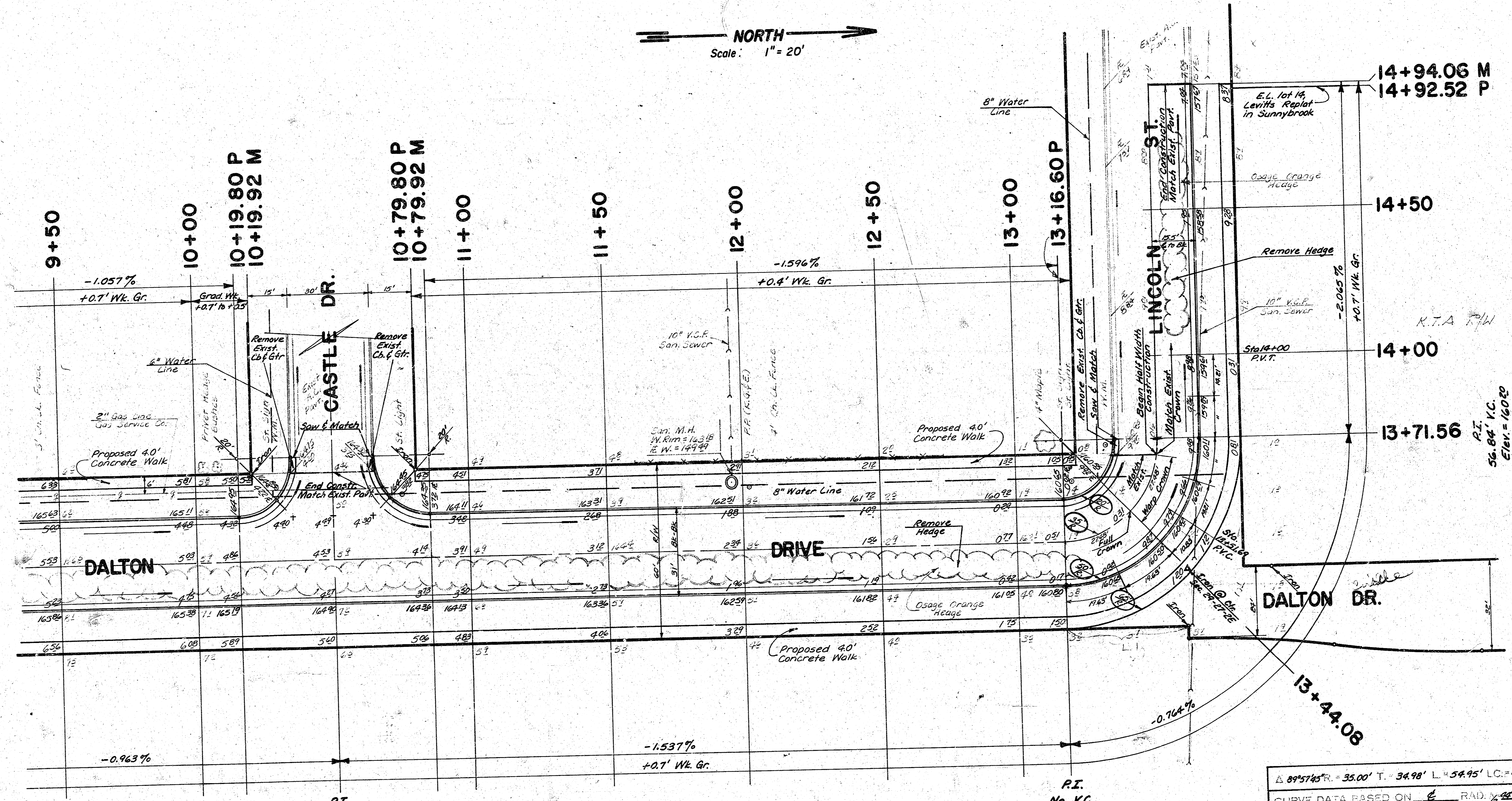
NORTH  
Scale: 1" = 20'



3/34

FILMED FROM THE BEST AVAILABLE COPY.....


  
 NORTH
   
 Scale: 1" = 20'



P.I.  
 No K.C.  
 Elev. 164.90

P.I.  
 No K.C.  
 Elev. 160.80

**NOTE: PROTECT ALL IRONS ON THIS PROJECT.**

$\Delta 89^{\circ}57'45'' R = 35.00'$ T = 34.98' L = 54.95' LC = 49.48'				
CURVE DATA BASED ON $\frac{1}{2}$ RAD. $\frac{1}{2}$ $26^{\circ}58'53''$				
STA.	ARC.	CHORD LENGTH	DEFLECTION	TOTAL REFLECTION
13+16.60			0°-00'-00"	0°-00'-00"
13+44.08	27.48'	9.18'	44.38'	22°-29'-26"
13+71.56	27.48'	9.18'	44.38'	22°-29'-26"

Defl./ft. = 49.1106686 Min.

(44)

FILMED FROM THE BEST AVAILABLE COPY.....