

STREET IMPROVEMENTS FOR DANKA ADDITION

Project Number
472-76-245-82406-000-000-001

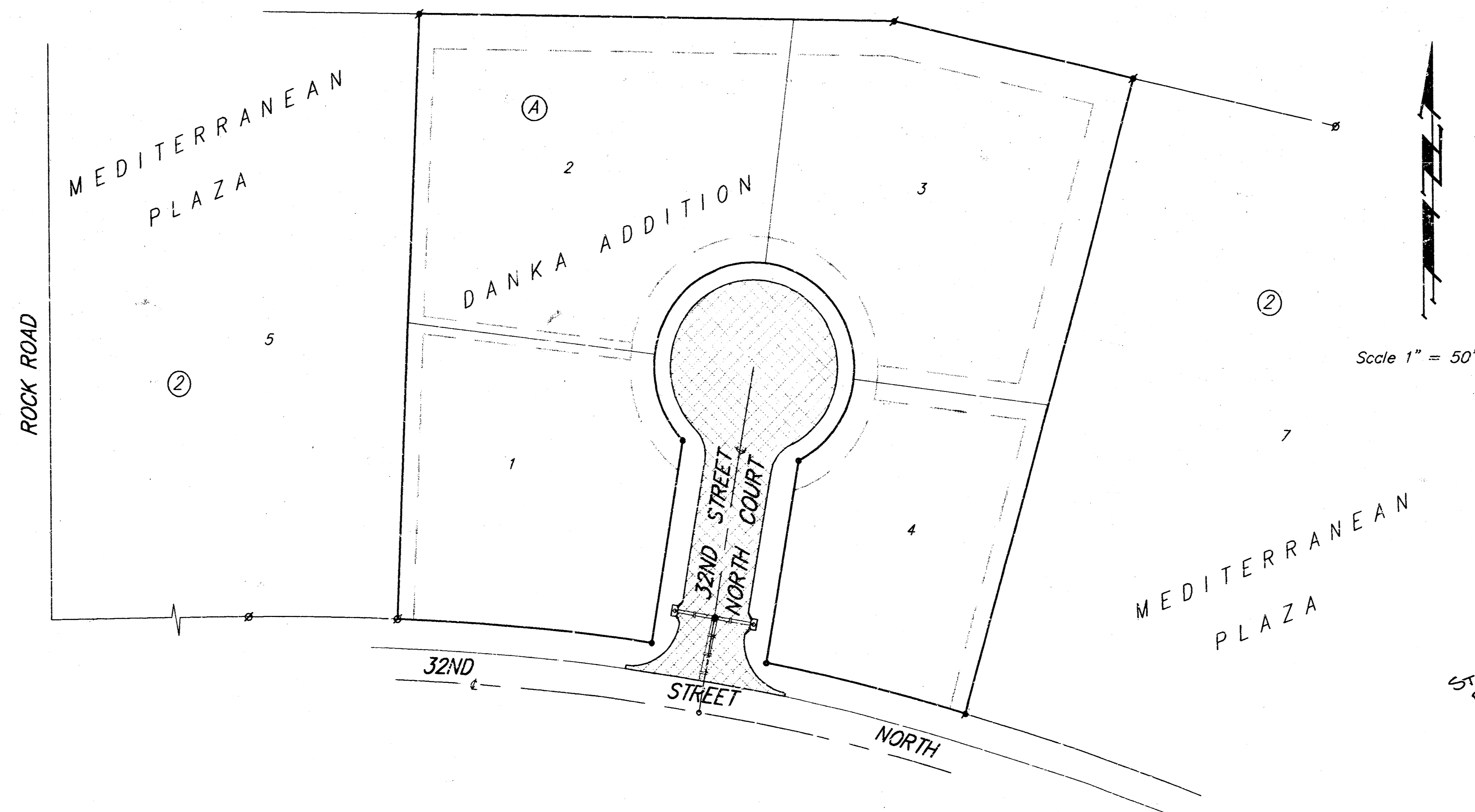
Index Code
762351

CITY OF WICHITA, KANSAS
Michael E. Lindebak City Engineer

General Notes

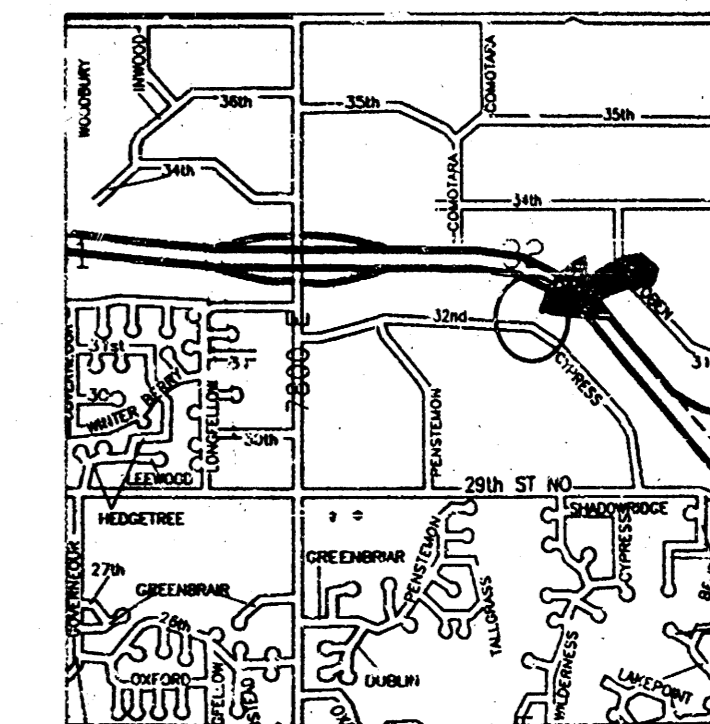
1. Utility service lines, poles, valve boxes, meters, et cetera are to be adjusted as necessary by others prior to construction unless the plans specifically call for their adjustment by the Contractor or unless the plans specifically identify a utility to be adjusted by its owner during construction. Existing utilities and their location, as shown on the plans, represent the best information obtainable for design. The contractor will be required to work around existing utilities within the right-of-way which do not conflict with proposed construction.
2. Rubble from the removal of miscellaneous structures and excess excavation which is to be wasted shall be disposed of on sites to be provided by the Contractor. These sites shall be approved by the Engineer as to suitability, appearance and site location. Locations that, in the opinion of the Engineer, will leave an unsightly appearance will not be approved. All disposal sites must be approved by the Kansas Department of Health and Environment. Material either stockpiled or disposed of in a flood plain would require a Kansas State Board of Agriculture permit. Any material dumped in waters of the United States or wetlands is subject to U.S. Corps. of Engineers permitting regulations. Any material buried or stockpiled beyond approved construction limits would require additional archaeological investigations unless buried in a previously approved borrow location.
3. A saw cut of at least one-half the depth of existing surface courses or one-fourth the depth of the existing total pavement thickness shall be provided at locations where proposed construction abuts an existing surface course or pavement for which partial removal of that surface or pavement is required. Sowed joint to facilitate removal within three (3) feet of existing joints will not be permitted and for such instances the limits of removal shall extend to the existing joint. Such saw cuts will not be paid for directly and this cost shall be considered as subsidiary to the removal of the surface or pavement.
4. This project does not include any provisions for construction of driveways.
5. Trees and shrubs in public right-of-way which are in direct conflict with proposed new construction shall be removed by the Contractor with the Engineer's approval. Trees and shrubs which are not in direct conflict with proposed new construction shall be saved and protected from damage.
6. Limits of earthwork shall match existing ground elevations at the right-of-way line unless otherwise noted on the plans with a new finished grade elevation. When a new finished grade elevation is shown, the earthwork shall extend one foot beyond the right-of-way line and then sloped up or down using permissible slopes to match the existing ground surface.
7. Contractor shall give property owners abutting this project, whose yards will be lower than the new finished grade elevations at the right-of-way line, an opportunity to utilize excess excavated material from the project to regrade their yards to drain to the new pavement. Contractor will be required to dump and spread the excess material as required by the specification when requested by the property owner. The Contractor shall ascertain that a dirt order form has been properly executed by the property owner before any such excess material is delivered to such properties.
8. The Contractor shall be responsible for preserving property lines. The Contractor will be required to re-establish any property lines which are damaged or destroyed by his construction operations. Such lines shall be re-established by a licensed land surveyor in accordance with state laws.
9. The Contractor shall adjust Water Valve Boxes and Fire Hydrants as directed by the Engineer at the price bid for said adjustments. The Water Department shall field locate water valves one time during construction when requested by the Contractor. It shall be the Contractor's responsibility to preserve such field locations during the construction process. Water valves, water valve boxes or fire hydrants damaged during construction shall be repaired by the contractor at his own expense.
10. Traffic will not be affected by construction on this project.
11. Inlet sediment barriers to be paid as each regardless of inlet size.
12. All disturbed areas in R/W are to be seeded with Rye grass per city specs.

NORTHEAST EXPRESSWAY RIGHT-OF-WAY



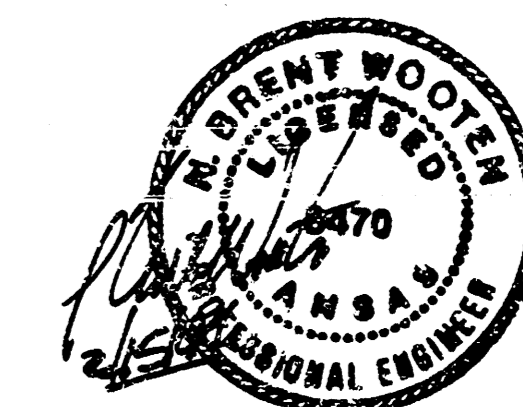
Sheet Index

- 1 Cover Sheet
- 2 4" Pavement Typical
- 3 Signing Detail
- 4 32nd Street North Court
- 5 Incidental Drainage
- 6 Type 1A Inlet Detail
- 7-8 Earthwork Cross Sections
- 9 Plat of Danka Addition

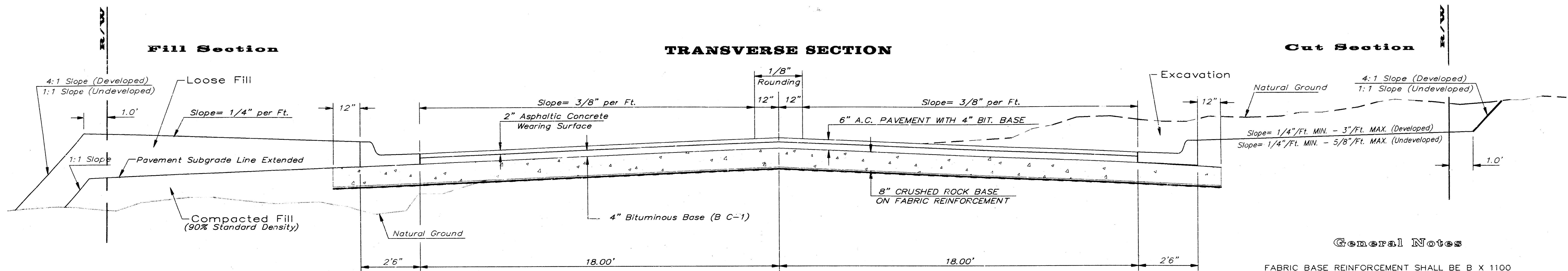


Site Location

STEM. SWR.
BOOKED
8-2-94
MCS



TYPICAL 41' B-B PAVEMENT DETAILS

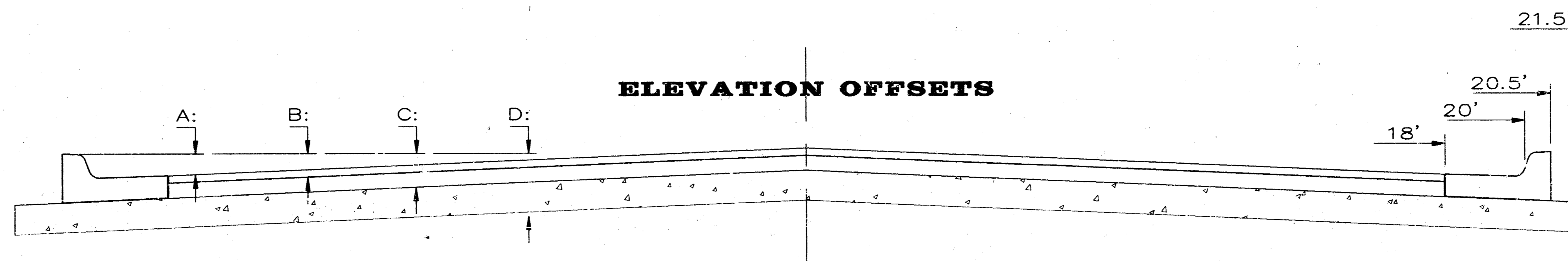


Pavement Specification
The crushed rock shall have the following gradation:

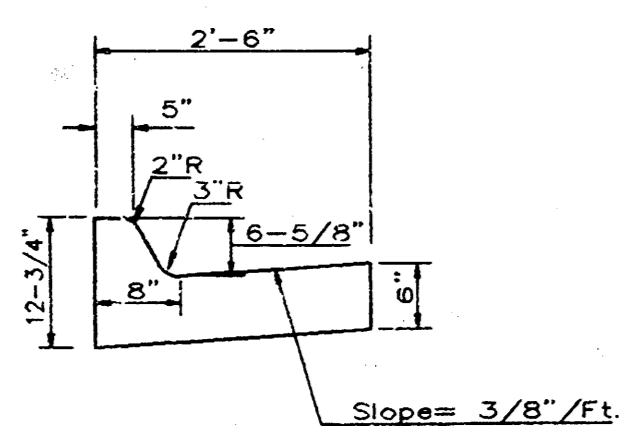
| Retained | % |
|----------|----------|
| 2-1/2" | 0 |
| 3/4" | 20 to 60 |
| #4 | 50 to 80 |
| #40 | 80 to 94 |
| #200 | 90 to 98 |

Rock quality shall conform to the requirements specified by the KDOT 1990 Edition Standard Specification Subsection 1102 for durability Class 1.

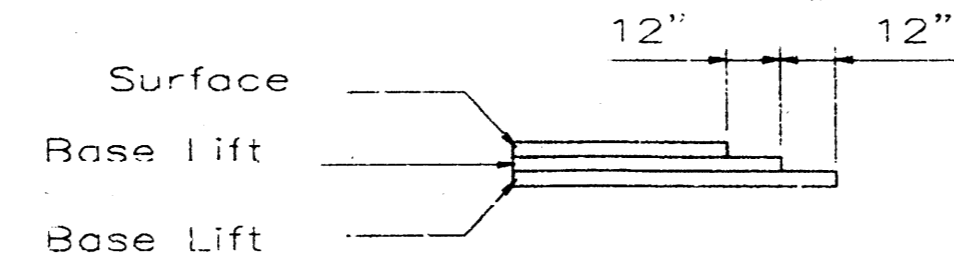
ELEVATION OFFSETS



| | DISTANCE FROM CENTERLINE (LT. & RT.) | | | | | | | | | | | | |
|---|--------------------------------------|-------|------|------|------|------|------|------|------|------|------|-------|-------|
| | 0' | 2' | 4' | 6' | 8' | 10' | 12' | 14' | 16' | 18' | 20' | 20.5' | 21.5' |
| A: Top of Curbs to Top of Surface Lift | -0.05 | -0.01 | 0.05 | 0.11 | 0.18 | 0.24 | 0.30 | 0.36 | 0.43 | 0.49 | - | - | - |
| B: Top of Curbs to Top of Upper Base Lift | 0.11 | 0.16 | 0.22 | 0.28 | 0.34 | 0.40 | 0.47 | 0.53 | 0.59 | 0.65 | - | - | - |
| C: Top of Curbs to Top of C. R. Subgrade | 0.43 | 0.48 | 0.55 | 0.61 | 0.67 | 0.73 | 0.80 | 0.86 | 0.92 | 0.98 | 1.05 | 1.06 | 1.07 |

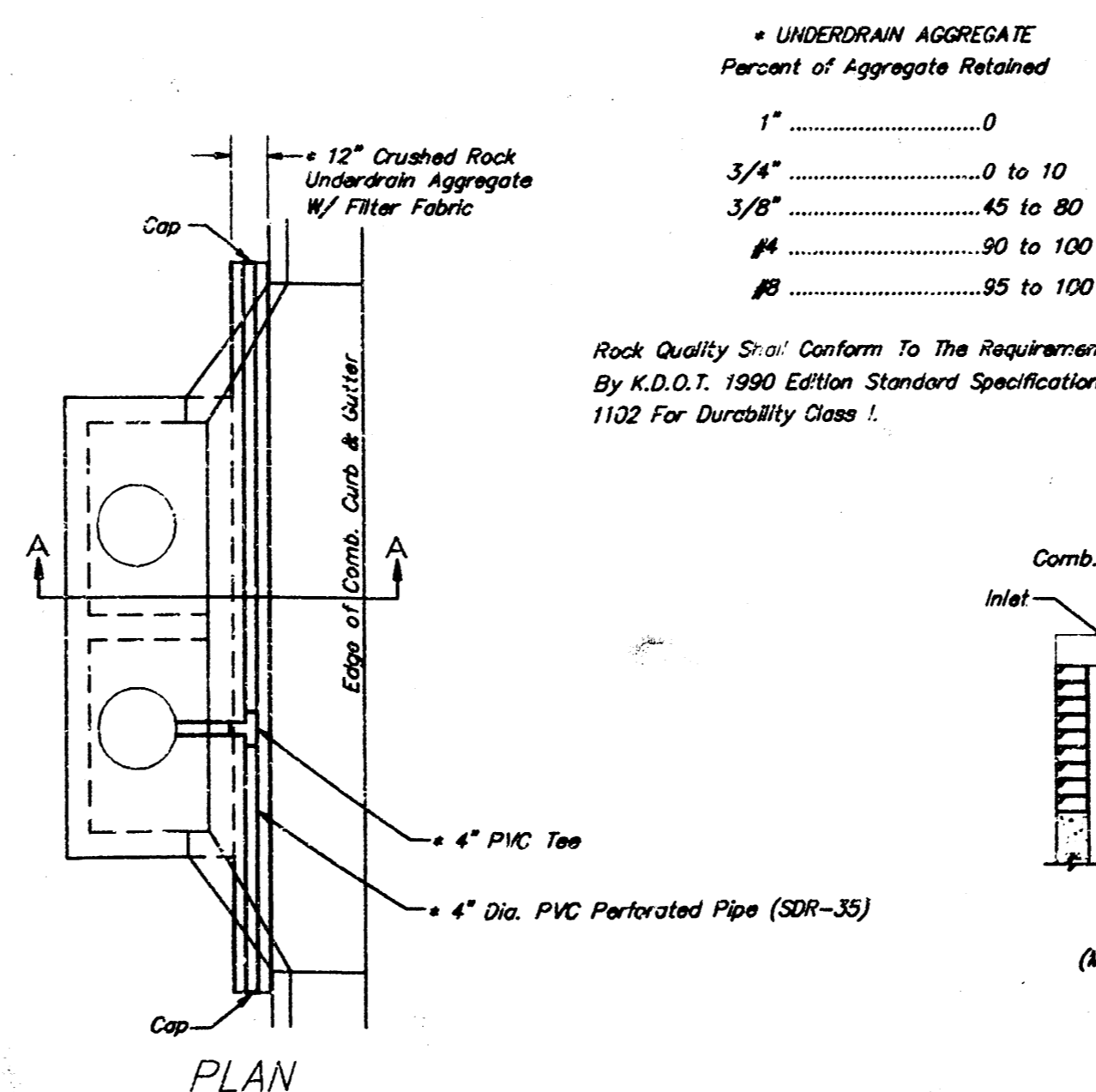


COMBINED CURB & GUTTER



TRANSVERSE JOINTS

Transverse construction joints shall be constructed in flexible base pavements at locations where pavement joints exist in existing flexible base pavement as shown by the detail. All costs associated with the construction of the transverse joint shall be included in the bid price for Square Yards of 6\"/>



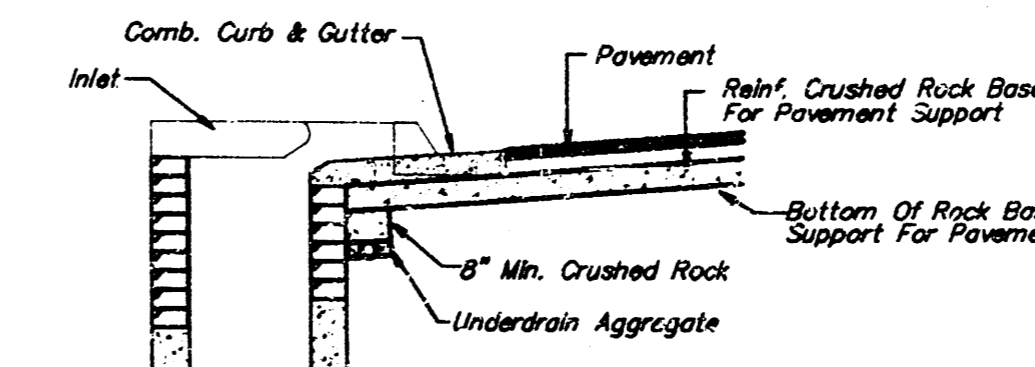
PAVEMENT UNDERDRAIN DETAIL
NOT TO SCALE

UNDERDRAIN AGGREGATE
Percent of Aggregate Retained

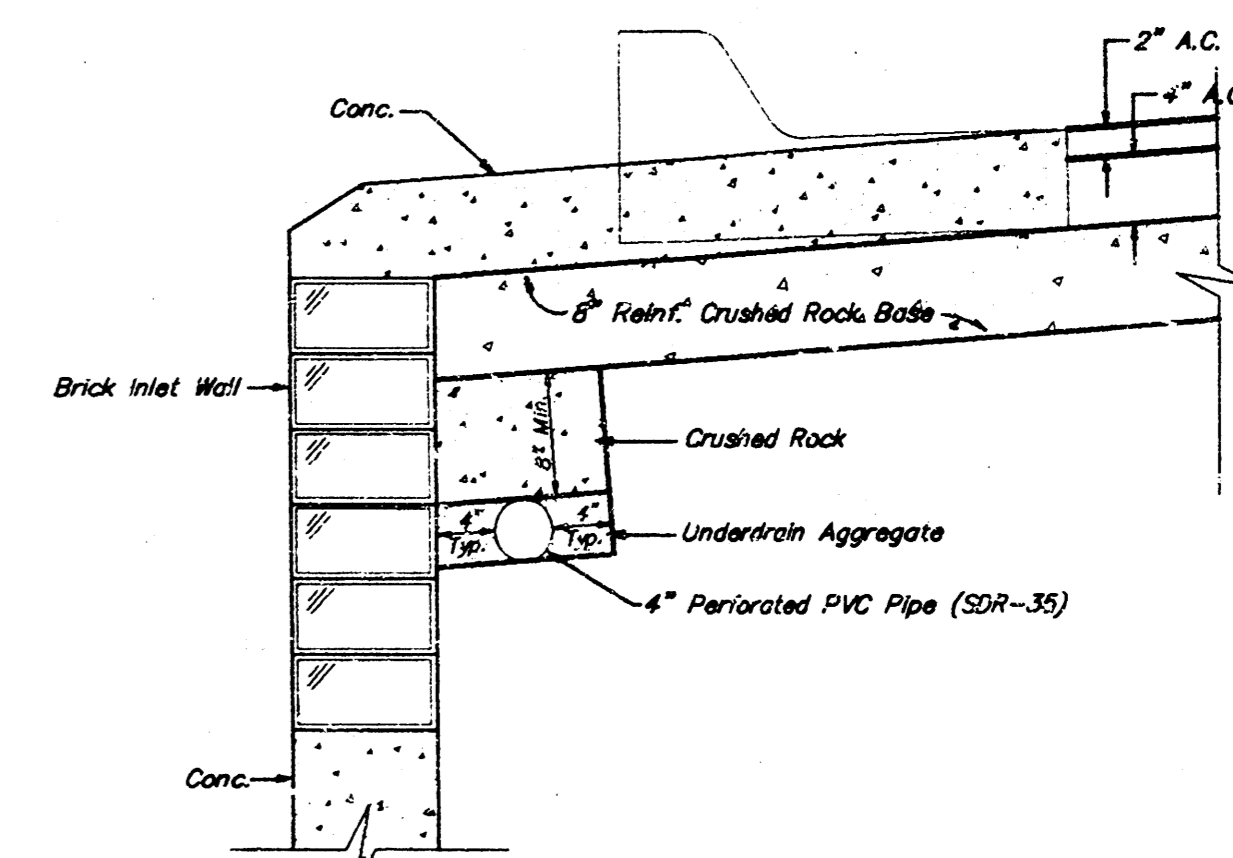
| | |
|------|-----------|
| 1" | 0 |
| 3/4" | 0 to 10 |
| 3/8" | 45 to 80 |
| #4 | 90 to 100 |
| #8 | 95 to 100 |

Rock Quality Shall Conform To The Requirements Specified By K.D.O.T. 1990 Edition Standard Specification Subsection 1102 For Durability Class 1.

NOTE: Place 4\"/>



SECTION A-A



TRENCH DRAIN DETAIL FOR RES. STREETS
NOT TO SCALE

General Notes

FABRIC BASE REINFORCEMENT SHALL BE B X 1100 GEOGRID AS MANUFACTURED BY TENSAR CORPORATION OR APPROVED EQUAL. FABRIC BASE REINFORCEMENT SHALL BE INSTALLED IN ACCORDANCE WITH MANUFACTURER'S RECOMMENDATIONS. CRUSHED ROCK SHALL BE UNIFORMLY GRADED FROM 1-1/2\"/>

ROCK BASE IS TO BE COMPACTED AND SMOOTHED WITH A STEEL FACED ROLLER PRIOR TO PLACEMENT OF ASPHALT. TACK COAT WILL NOT BE APPLIED TO ROCK BASE.

A TACK COAT OF EMULSIFIED ASPHALT (SC-1H OR CSS-1H) SHALL BE APPLIED AT AN APPROXIMATE RATE OF 0.05 GALLONS PER SQUARE YARD BETWEEN EACH LIFT OF ASPHALTIC MATERIAL.

BITUMINOUS BASE AND ASPHALTIC CONCRETE WEARING SURFACE SHALL BE PLACED WITH A LAYDOWN MACHINE HAVING AUTOMATIC CONTROLS FOR LINE AND GRADE.

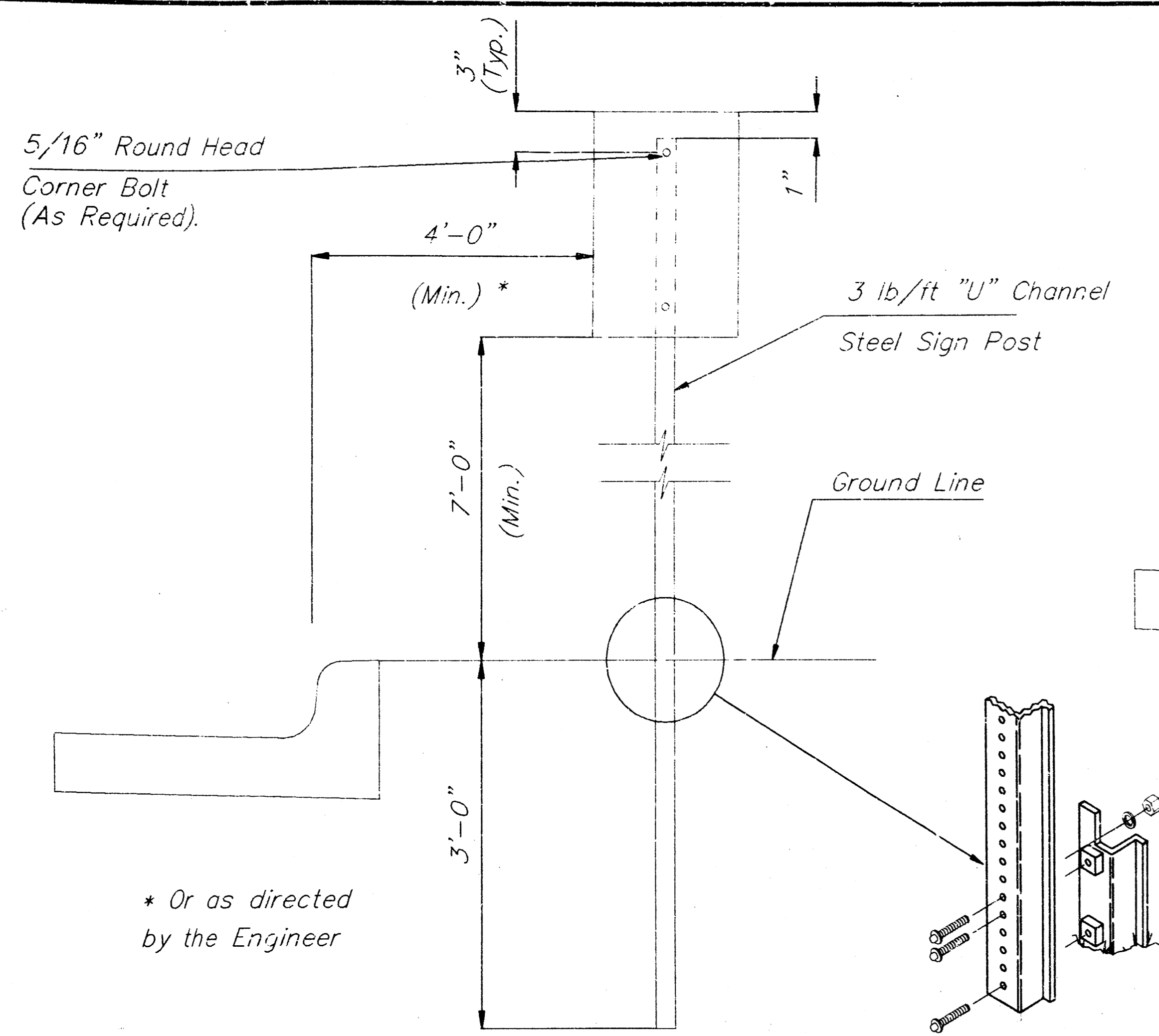
CONSTRUCTION JOINTS IN EACH LIFT SHALL BE STAGGERED A MINIMUM DISTANCE OF ONE (1) FOOT FROM JOINTS IN PRECEDING LIFTS AND PLACED SO THAT A JOINT WILL BE CONSTRUCTED ON THE CENTERLINE OF THE TOP LIFT.

THE ASPHALTIC CONCRETE PAVEMENT BETWEEN THE COMBINED CURB AND GUTTER SHALL BE PAID AS SQUARE YARDS OF 6\"/>

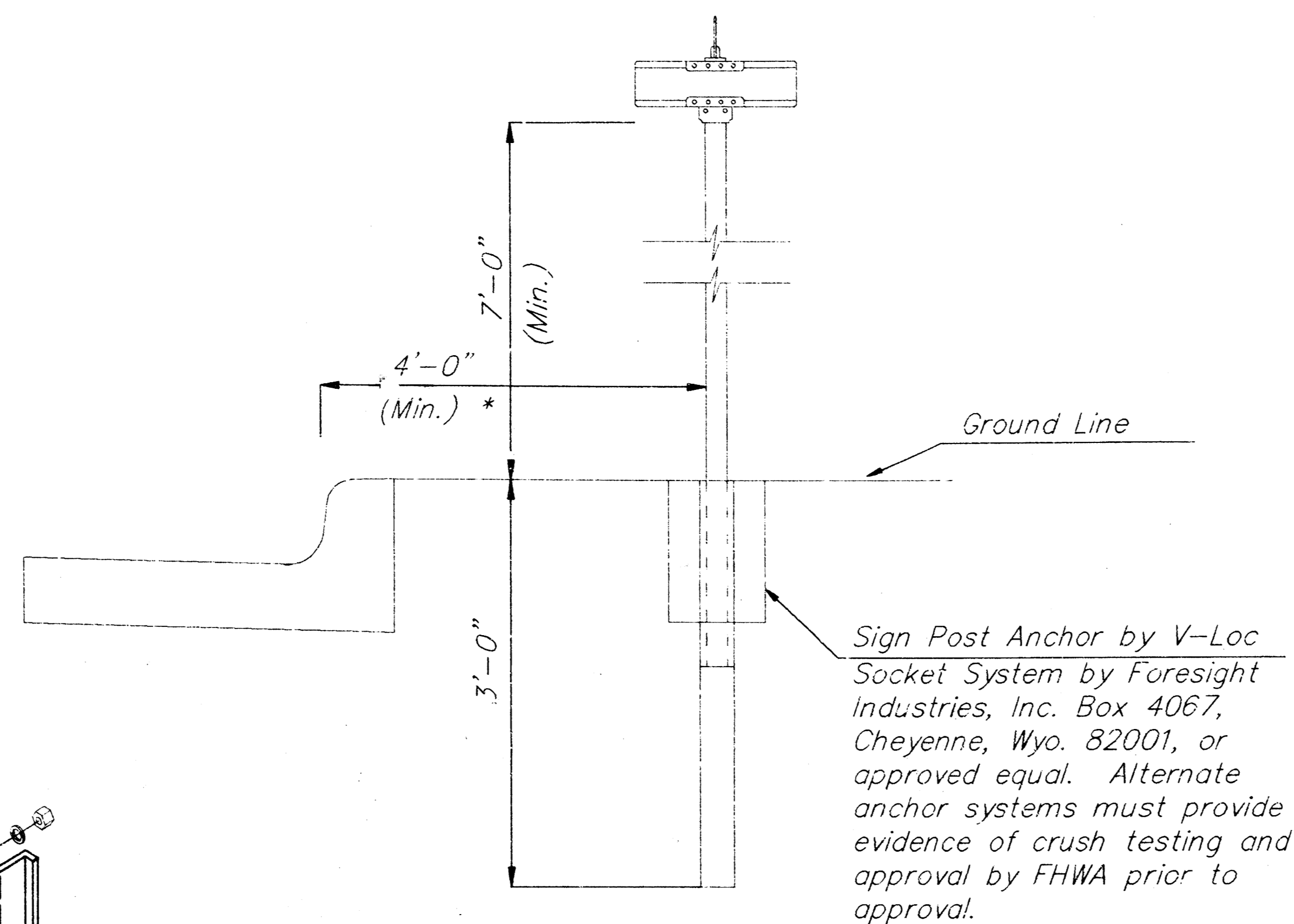
6 INCH Asphaltic Concrete
Pavement with Crushed Rock Base on Fabric Reinforcement
City of Wichita, Kansas

BAUGHMAN COMPANY P. A.
ENGINEERING & SURVEYING
316/262-7271 • 315 ELLIS • WICHITA, KANSAS 67211

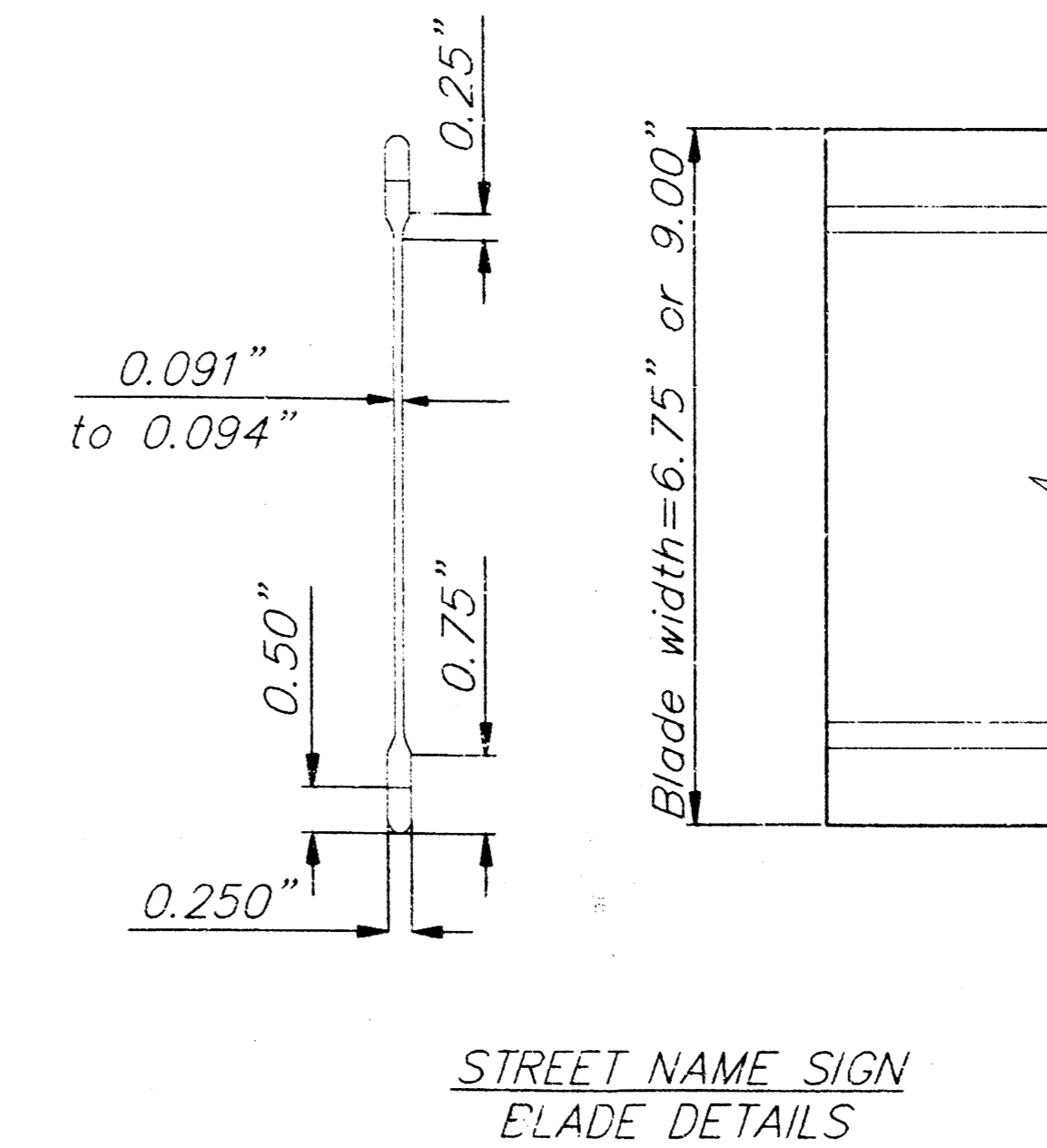
PROJECT NUMBER
472-76-245-82406-000-000-001
SHEET **2** OF **9**



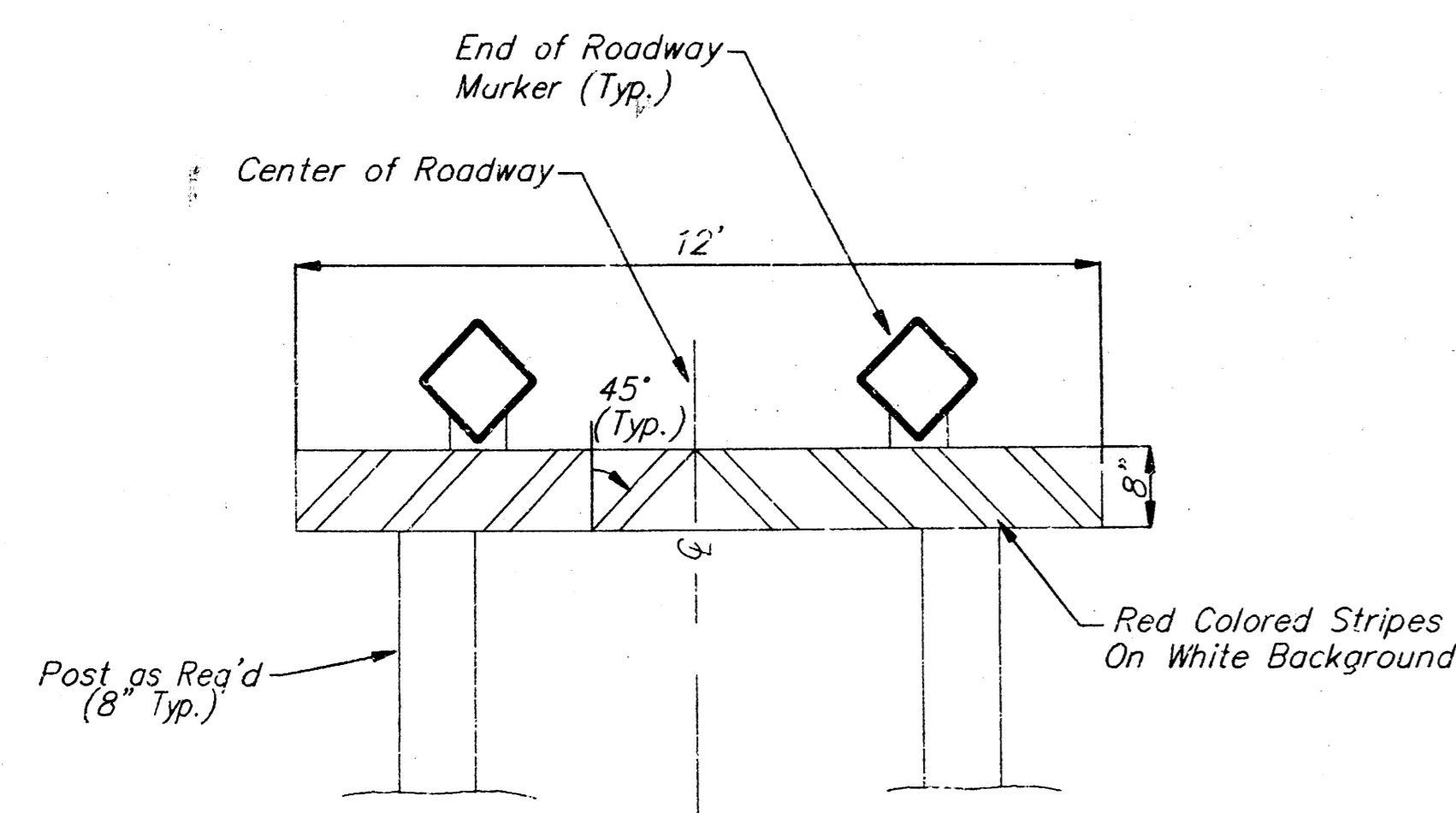
Typical Traffic Control Sign Mounting Installation
Curb and Gutter Section



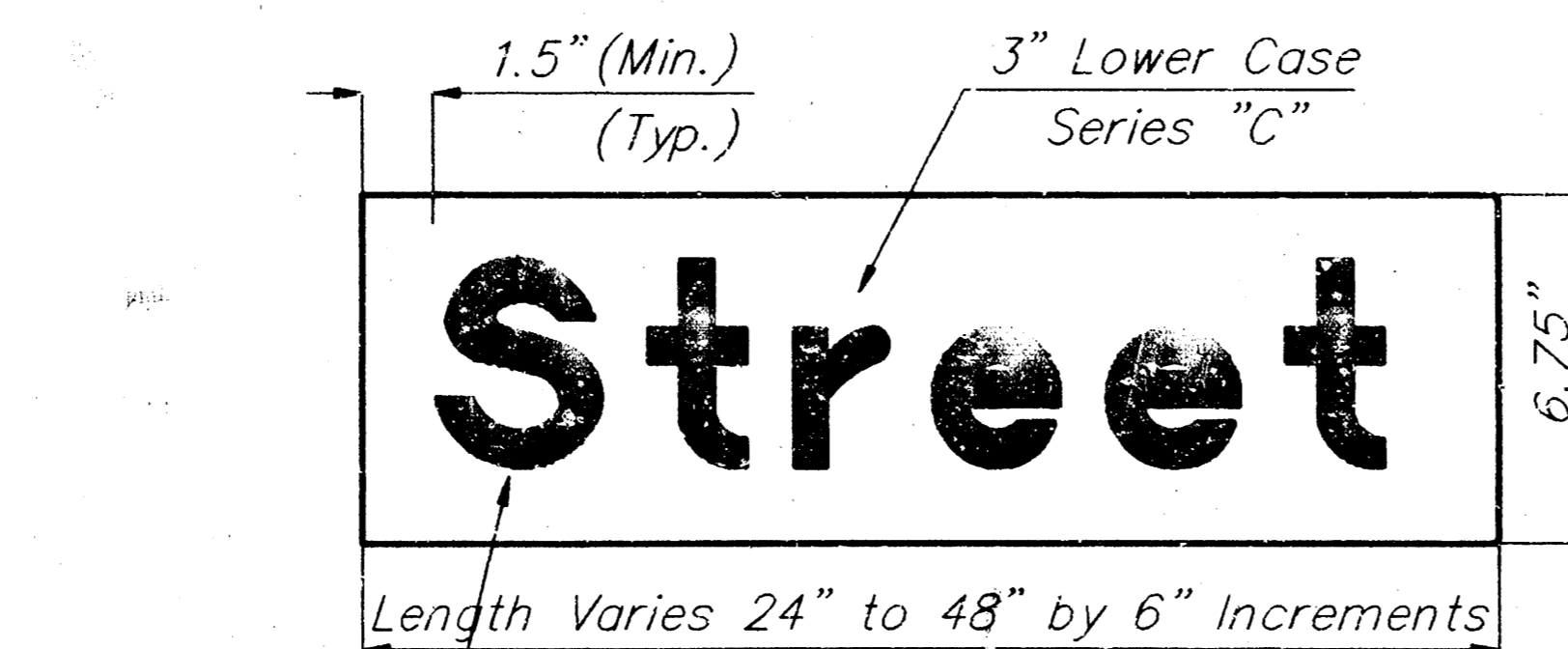
Typical Street Name Sign Mounting Installation
Curb and Gutter Section



STREET NAME SIGN
BLADE DETAILS



Type 1 Barricade Detail w/E.O.R. Marker

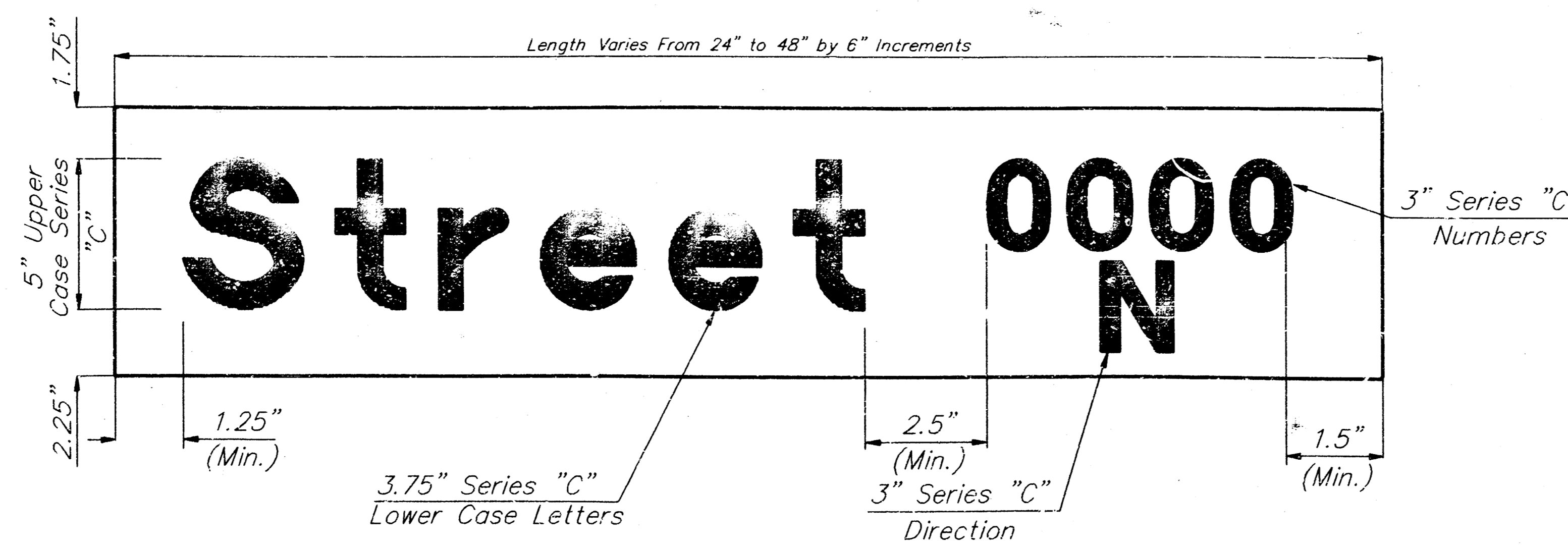
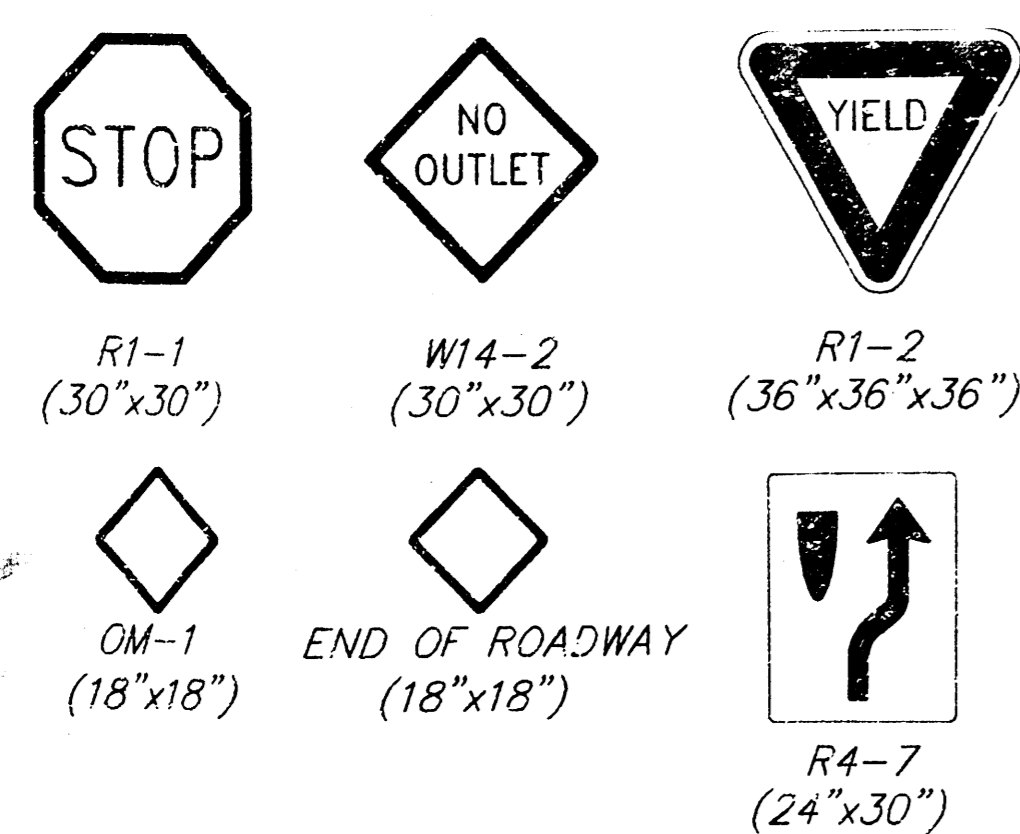


Detail "A"
6.75" Standard

SIGN ASSEMBLY TABLE

| STATION | OFFSET | SIGN | QUANTITY* |
|---------|----------|-------------|-----------|
| 0+31.06 | 31.67 RL | STREET SIGN | 1 |
| TOTAL | | | 1 |

* For Information Only



Detail "B"
9" Metro

| STREET NAME | NO. BLADES REQ'D | |
|------------------------------------|------------------|----------|
| | 6 3/4" STD | 9" METRO |
| 32nd STREET NORTH | 1 | |
| 32nd STREET NORTH CT. 8620-8650 | | 1 |
| | | |
| | | |
| | | |
| | | |
| | | |
| | | |
| | | |

GENERAL NOTES - SIGNING
NOTE: References below to "standard specifications" denote standard specifications for state road and bridge construction, edition 1990 by the Kansas Department of Transportation.

- Post Anchors. Posts shall be anchored with a yielding base post support as detailed.
- Posts for traffic control signs. Posts shall conform to the requirements of subsection 1520 of the standard specifications except that all posts shall weigh 3 lbs./foot minimum.
- Posts for street name signs (SNS). Posts shall be 9 feet long, constructed from 2 3/8" O.D. galvanized steel pipe weighing a minimum of 3.22 lbs./foot. Posts shall be positioned so that the bottom blade is 7 feet above grade.
- Sign blanks for traffic control signs. Sign blanks shall be fabricated from 0.080" aluminum alloy 6063-T6 conforming to the requirements of subsection 1626 of the standard specifications.
- Signs blades for street name signs. Extruded aluminum blades shall be aluminum alloy conforming to 6063-T6 or 6062-H38 (ASTM specifications 8221, latest issue). Blades shall have an anodine or phosphate etched finish. Blades shall have square corners and no holes. Blades bearing the street names shall be firmly attached to the mounting brackets using allen-type set screws. The blades shall be oriented parallel to the street.
- Mounting brackets for SNS. Die-cast aluminum brackets shall be aluminum alloy 360 having a tensile strength of 44,000 PSI. The brackets shall be smoothly finished free of pits, burrs, and flaws. Each bracket shall be tapped and drilled for 5/16" zinc-plated allen-type set screws having self locking saw-tooth ends.
- Fasteners. All steel fasteners for traffic control signs shall be galvanized and shall conform to the requirements of subsection 1614 of the standard specifications.
- Reflective sheeting. Reflective sheeting shall be type II - High performance class HA in accordance with subsection 2201 of the standard specifications.
- Process ink. All process ink shall conform to the requirements of subsection 2202 of the standard specifications.
- Details. Regulatory and warning signs shall conform to the details in "Standard Highway Signs", FHWA 1979.
- Details - SNS. The reflective sheeting for the 6 3/4" standard size SNS is to be the highway green reverse screened background with silver-white #2 copy with 4" uppercase and 3" lower case primary copy and suffix copy. Both series "C". Where suffix letters are used on numbered streets such as RD, TH, etc., they shall be 1 1/2" lower case series "C" letters. Faces to trim to a 6 1/4" (See detail A).

The reflective sheeting for the 9" metro size SNS is to be the highway green reverse screened background with silver-white #2 copy with 5" upper case and 3 3/4" lower case primary copy and suffix copy, both series "C", where suffix letters are used on numbered streets, such as RD, TH, etc., they shall be 3" lower case series "C". The cardinal direction centered directly below the block number shall be an upper case, 3" series "C" letter. Faces to trim to an 8 1/2" width (See detail B).

For cul-de-sac streets, a 9" metro size blade shall be used with the house numbers displayed beneath the street name. Lettering to be the same as for the 6 3/4" size blade, except that the house number information shall be 3" series "C".

Shop drawings of layout for SNS shall be submitted to the Traffic Engineering Division of the City of Wichita for approval prior to fabrication. The finished signs as supplied shall be of good appearance, free from ragged edges, cracks, scales or blisters, and shall be clean cut. Signs shall be packed in such a manner as to prevent damage or displacement during shipment or storage.

New traffic control and street name signs. New traffic control and street name signs shall be measured and paid for at the lump sum price for signing. The payment as set forth above shall be considered full compensation for all excavation, backfilling, posts, anchors, fasteners, materials, labor, tools and incidentals necessary to complete this work.

City of Wichita Public Works
Signing Detail

BAUGHMAN COMPANY P. A.
ENGINEERING & SURVEYING
316/262-7271 • 315 ELLIS • WICHITA, KANSAS 67211

PROJECT NUMBER
472-76-245-82406-000-000-001

SHEET
3 OF 9

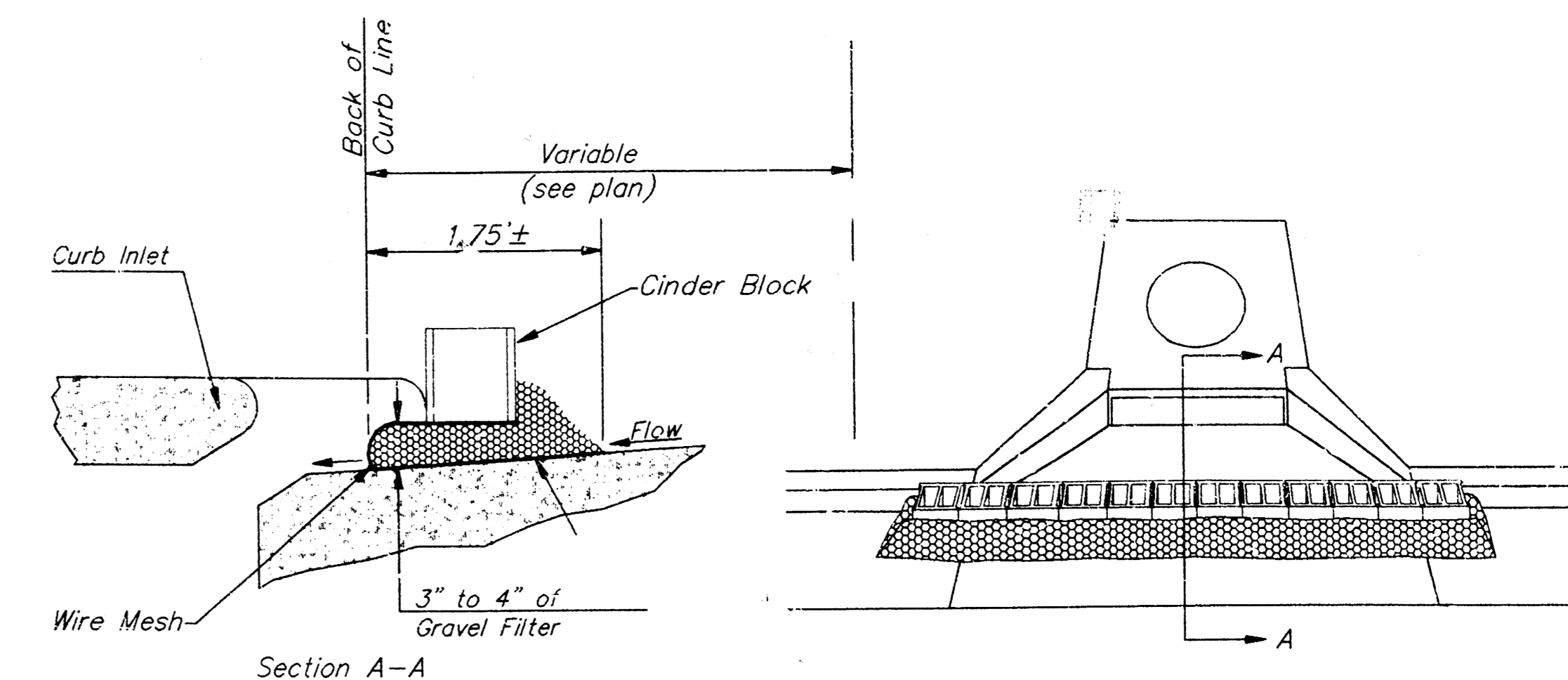
DESIGN
DRAWN
UTIL. CHECK'D
DATE
SCALE
None

KF/MSP
Jan. 1994

BENCHMARKS

"□" Cut Top of Curb Located 1' West of Curb Inlet and 15' North of N.E. Corner, Lot 5, Block 1 Mediterranean Plaza.
Elevation = 225.94 (City Datum)

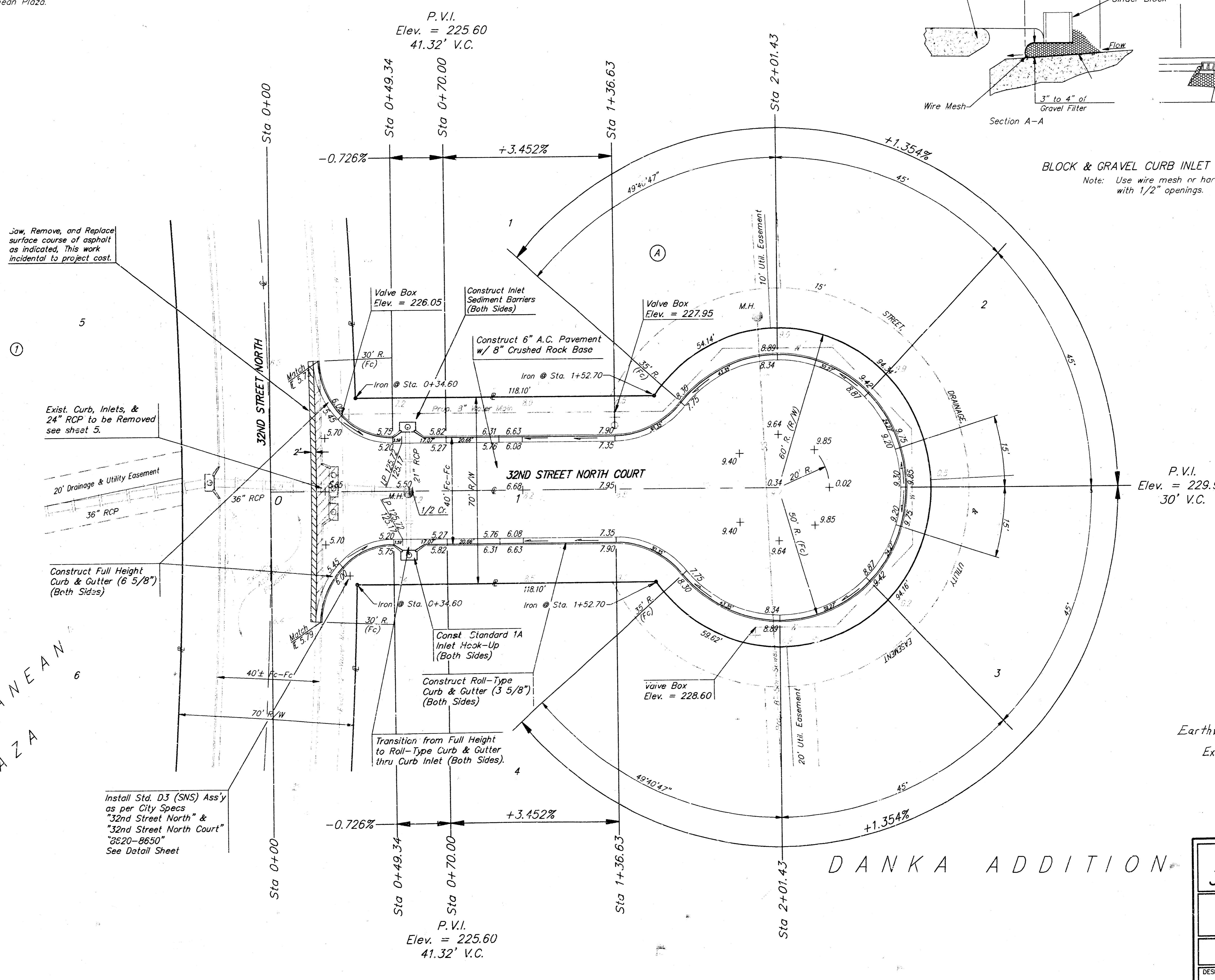
"□" Cut Top of North Curb On 32nd Street North, Between Lots 4 & 5, Block 2, Mediterranean Plaza.
Elevation = 229.75 (City Datum)



BLOCK & GRAVEL CURB INLET SEDIMENT BARRIER

Note: Use wire mesh or hardware cloth with 1/2" openings.

MEDITERRANEAN PLAZA



P.V.I.
Elev. = 229.95
30' V.C.

Note: Roll Type Curb & Gutter To Be Const On This Sheet

Earthwork Totals: (C.Y.)
Excavation = 1083

Install Std. D3 (SNS) Assy as per City Specs "32nd Street North" & "32nd Street North Court" "3520-8650" See Detail Sheet

P.V.I.
Elev. = 225.60
41.32' V.C.

| | | | |
|---|--------------|------------------------------------|-------------------------------------|
| DANKA ADDITION | | | |
| 32ND STREET NORTH COURT | | | |
| BAUGHMAN COMPANY P. A. ENGINEERING & SURVEYING 316/262-7271 • 315 ELLIS • WICHITA, KANSAS 67211 | | | |
| PROJECT NUMBER 472-76-245-8240-000-000-001 | | | |
| DESIGN B.P. | DRAWN MSP | UTIL. CHECK'D DATE Feb. 1993 | SCALE noted |
| | | | SHEET 4 OF 9 |

BENCHMARKS

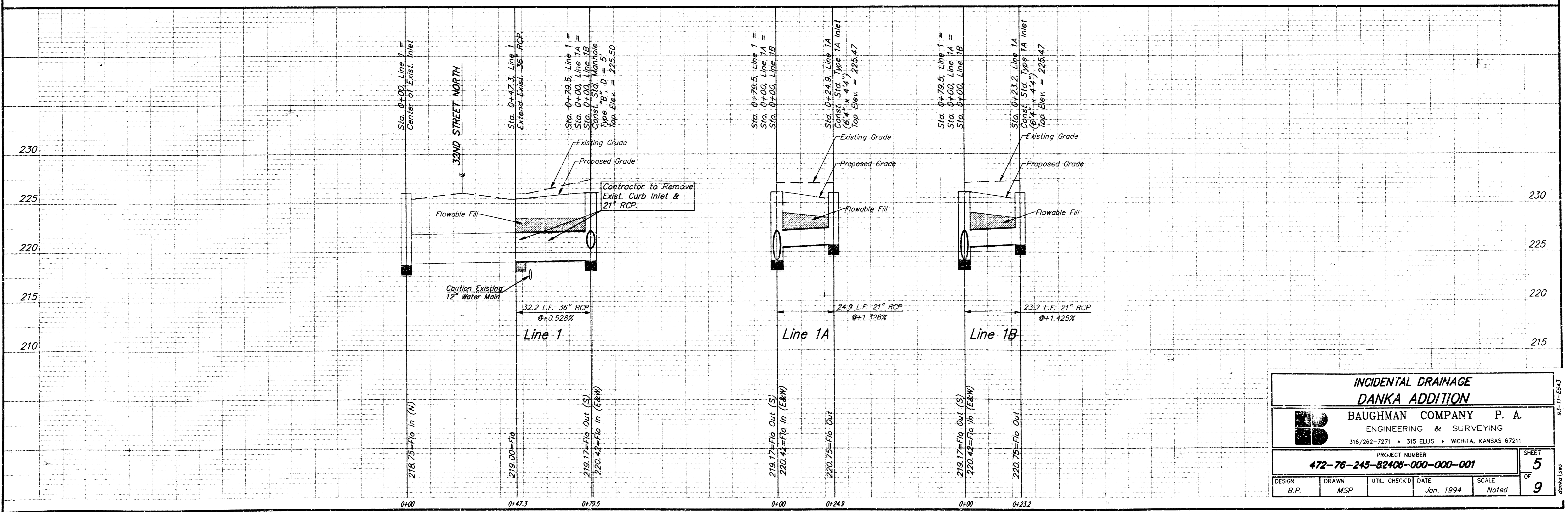
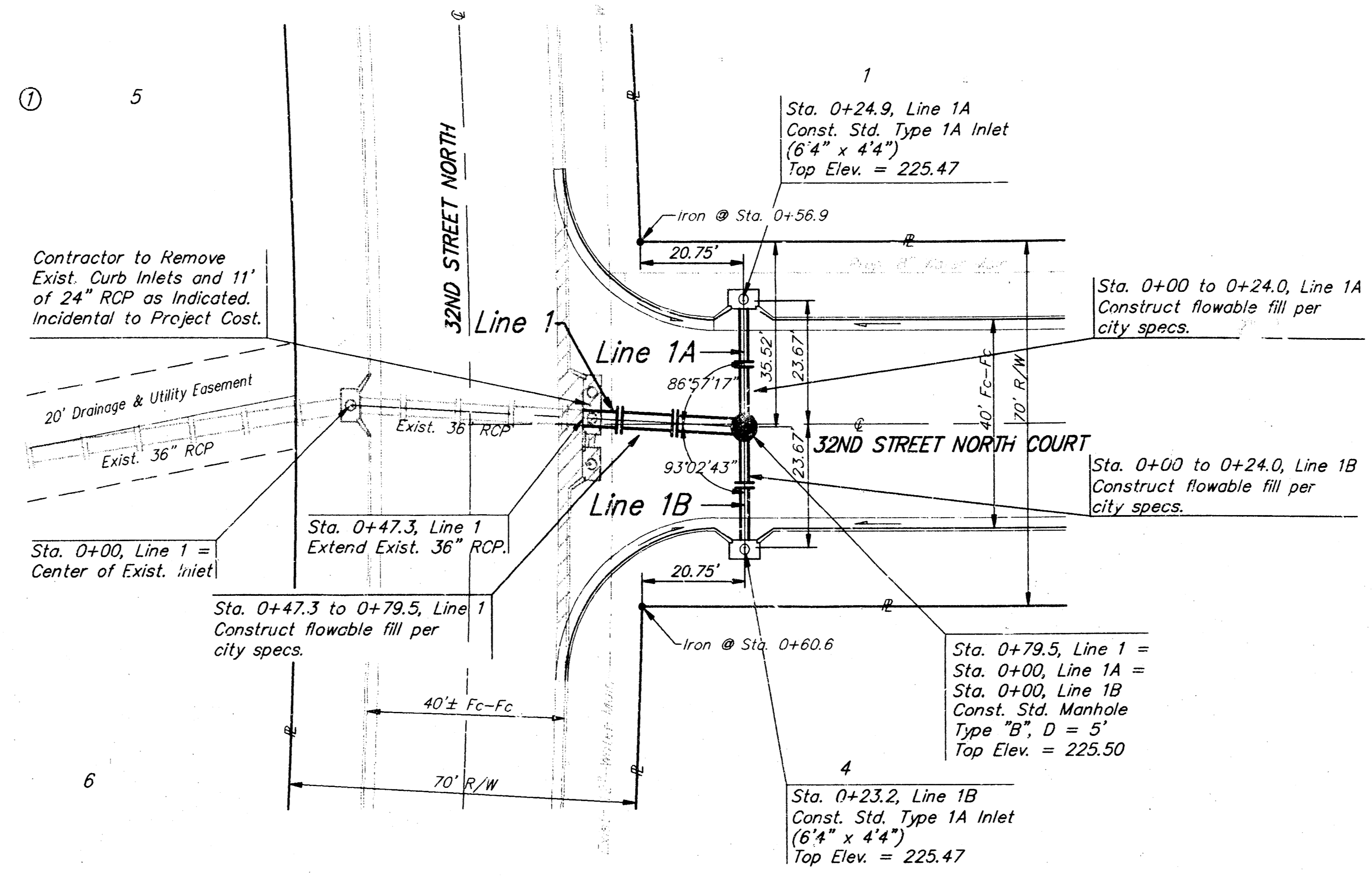
"□" Cut Top of Curb Located 1' West of Curb Inlet and 15' North of N.E. Corner, Lot 5, Block 1 Mediterranean Plaza.
Elevation = 225.94 (City Datum)

"□" Cut Top of North Curb On 32nd Street North, Between Lots 4 & 5, Block 2, Mediterranean Plaza.
Elevation = 229.75 (City Datum)

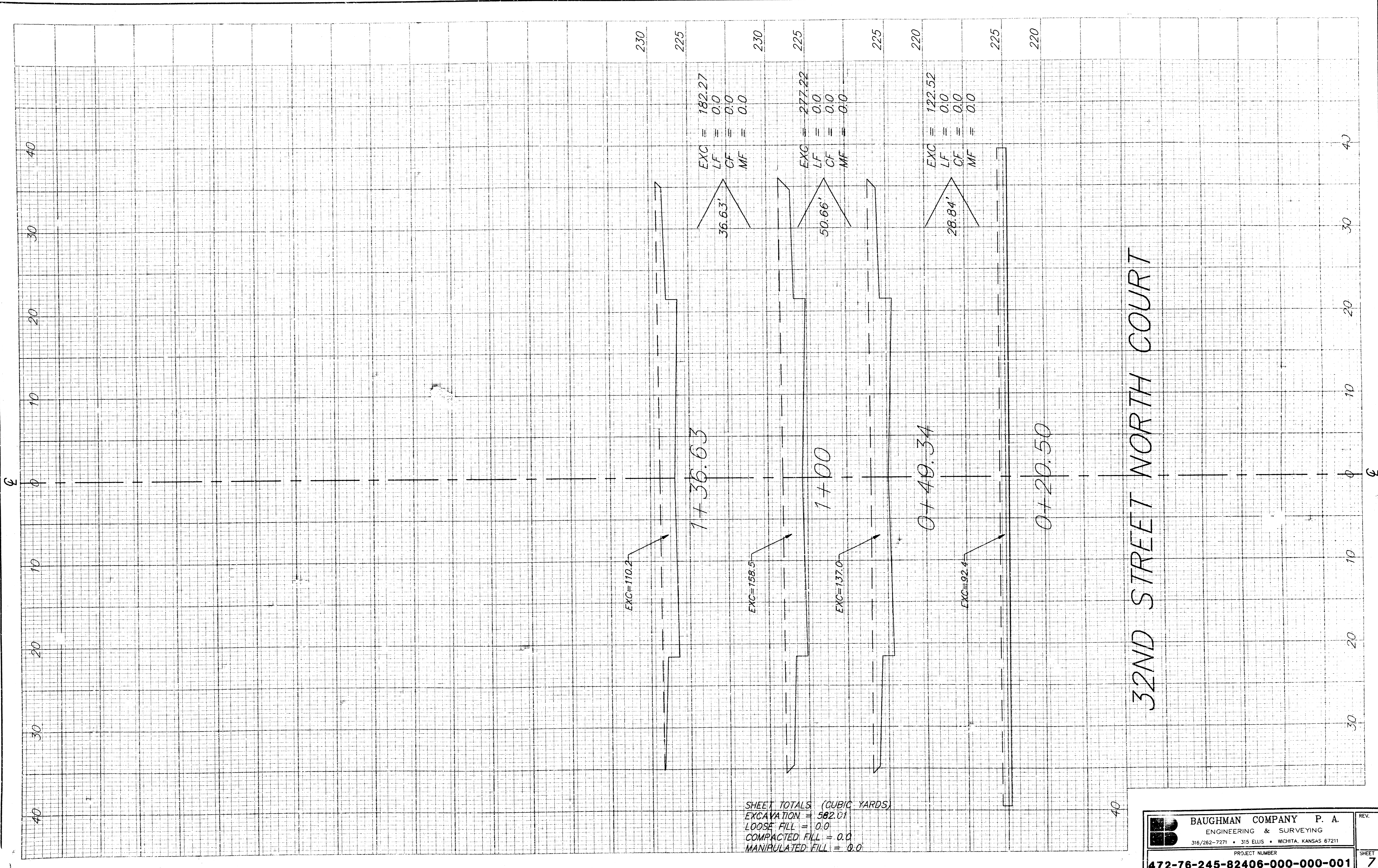
MEDITERRANEAN
PLAZA



Scale: 1" = 20' Horizontal
1" = 5' Vertical
● = Iron



| | | | | |
|--|--------------|--------------|-------------------|-------------------------------------|
| INCIDENTAL DRAINAGE DANKA ADDITION | | | | |
| BAUGHMAN COMPANY P. A. ENGINEERING & SURVEYING 315/262-7271 • 315 ELLIS • WICHITA, KANSAS 67211 | | | | |
| PROJECT NUMBER 472-76-245-82408-000-001 | | | | |
| DESIGN B.P. | DRAWN MSP | UTIL CHECK'D | DATE Jan. 1994 | SCALE Noted |
| | | | | SHEET 5 OF 9 |

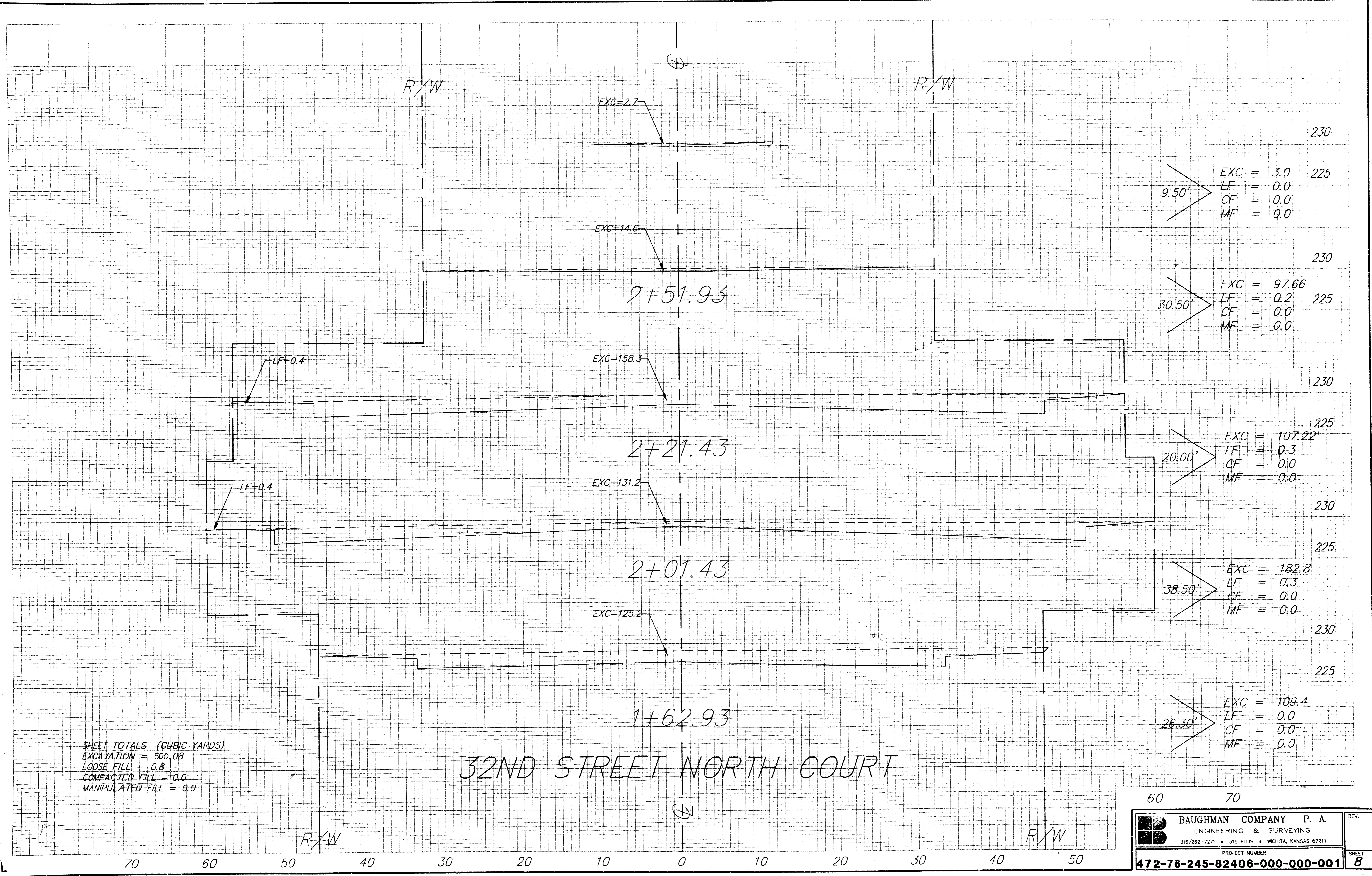


SHEET TOTALS (CUBIC YARDS)
 EXCAVATION = 562.01
 LOOSE FILL = 0.0
 COMPACTED FILL = 0.0
 MANIPULATED FILL = 0.0

40

32ND STREET NORTH COURT

| | | | |
|--|---|--|-------------------|
| | BAUGHMAN COMPANY P. A. ENGINEERING & SURVEYING <small>316/262-7271 • 315 ELLIS • WICHITA, KANSAS 67211</small> | | REV. |
| | PROJECT NUMBER 472-76-245-82406-000-000-001 | | SHEET 7 |



SHEET TOTALS (CUBIC YARDS)
 EXCAVATION = 500.08
 LOOSE FILL = 0.8
 COMPACTED FILL = 0.0
 MANIPULATED FILL = 0.0

32ND STREET NORTH COURT


9.50' $\left\{ \begin{array}{l} EXC = 3.0 \\ LF = 0.0 \\ CF = 0.0 \\ MF = 0.0 \end{array} \right.$

30.50' $\left\{ \begin{array}{l} EXC = 97.66 \\ LF = 0.2 \\ CF = 0.0 \\ MF = 0.0 \end{array} \right.$

20.00' $\left\{ \begin{array}{l} EXC = 107.22 \\ LF = 0.3 \\ CF = 0.0 \\ MF = 0.0 \end{array} \right.$

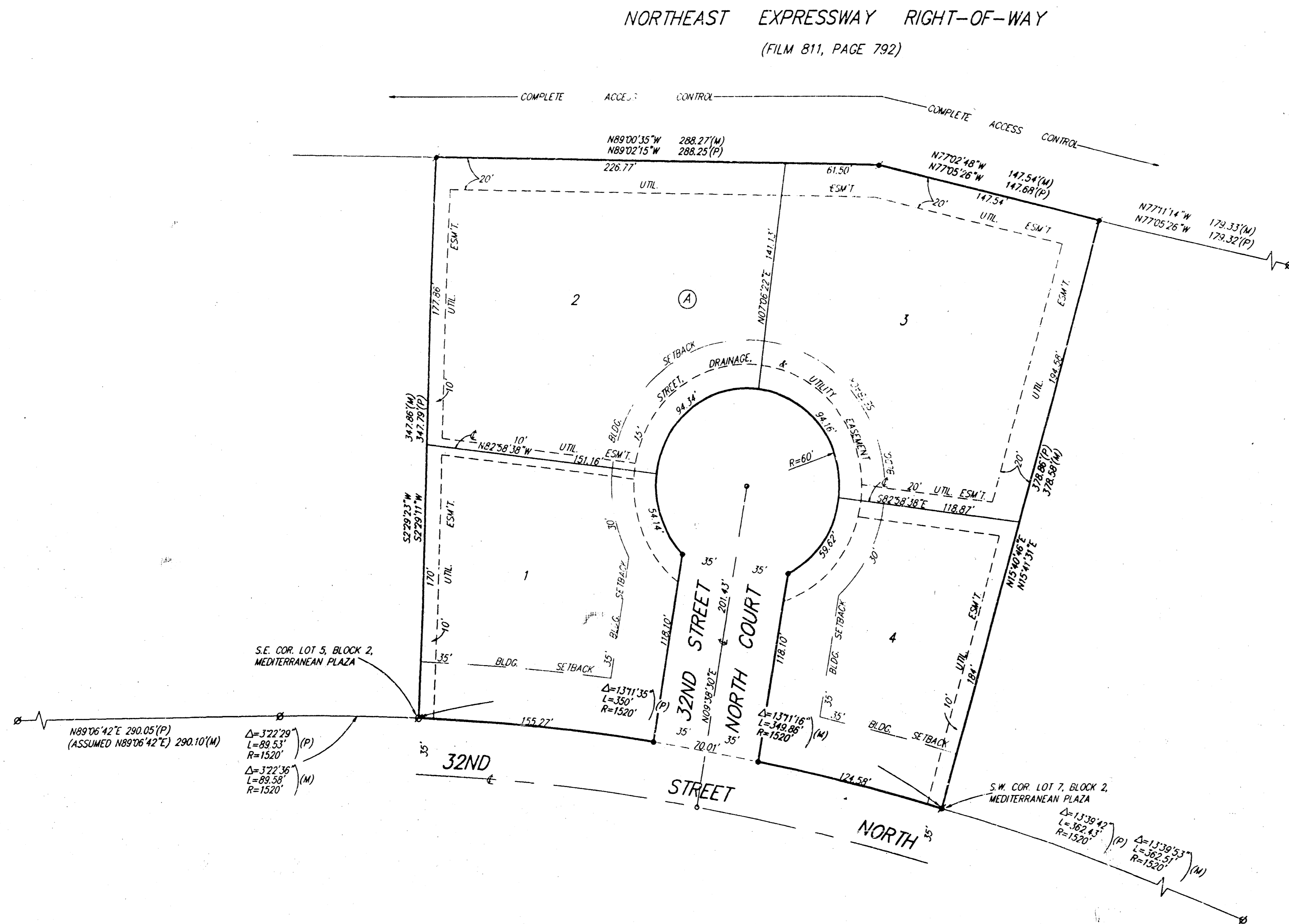
38.50' $\left\{ \begin{array}{l} EXC = 182.8 \\ LF = 0.3 \\ CF = 0.0 \\ MF = 0.0 \end{array} \right.$

26.30' $\left\{ \begin{array}{l} EXC = 109.4 \\ LF = 0.0 \\ CF = 0.0 \\ MF = 0.0 \end{array} \right.$

| | | | | |
|---|--|----|--|----------|
| 60 | | 70 | | |
|  BAUGHMAN COMPANY P. A. ENGINEERING & SURVEYING <small>316/262-7271 • 315 ELLIS • WICHITA, KANSAS 67211</small> | | | | REV. |
| PROJECT NUMBER | | | | SHEET |
| 472-76-245-82406-000-000-001 | | | | 8 |

DANKA ADDITION

WICHITA, SEDGWICK COUNTY, KANSAS

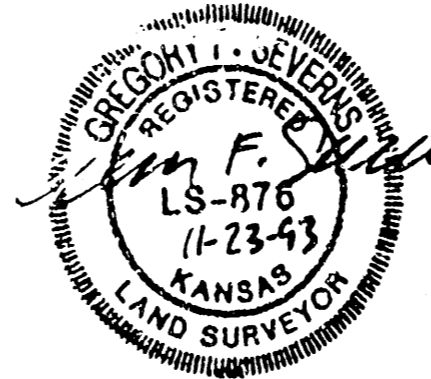


State of Kansas)
County of Sedgwick)
We, Baughman Company P.A., Surveyors in aforesaid county and state do hereby certify that we have surveyed and platted "DANKA ADDITION" to Wichita, Sedgwick County, Kansas, and that the accompanying plat is a true and correct exhibit of the property surveyed, described as and being a replat of Lot 6, Block 2, Mediterranean Plaza, an Addition to Wichita, Sedgwick County, Kansas.

All being situated in the S.W. 1/4 of Sec. 32, Twp. 26-S, R-2-E of the 6th P.M., Sedgwick County, Kansas.

Existing public easements being vacated by virtue of KSA 12-512(b).

Baughman Company, P.A.



Gregory F. Severns
Surveyor

This plat of "DANKA ADDITION", Wichita, Sedgwick County, Kansas, has been submitted to and approved by the Wichita-Sedgwick County Metropolitan Area Planning Commission, Wichita, Kansas. Dated this 14th day of November, 1993, Wichita-Sedgwick County Metropolitan Area Planning Commission.

James D. Miner
Chairman

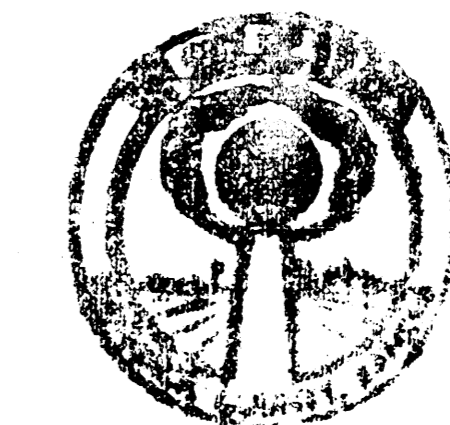
Marvin S. Krout
Secretary



This plat approved and all dedications shown hereon accepted by the City Council of the City of Wichita, Kansas, this 14th day of November, 1993.

Elma Broadfoot
Mayor

Pat Burnett
Deputy City Clerk



Know all men by these presents that we, the undersigned, have caused the land described in this surveyors certificate to be platted into lots, a block, and a street to be known as "DANKA ADDITION", Wichita, Sedgwick County, Kansas. The utility easements are hereby granted as indicated for the construction and maintenance of all public utilities. The street, drainage, and utility easement is dedicated to and for the use of the public, and is hereby granted as indicated for drainage purposes and for the construction and maintenance of all public utilities. The street is hereby dedicated to and for the use of the public. All abutters rights of access to or from Northeast Expressway over and across the north lines of Lots 2 and 3, Block A, are hereby granted to the appropriate governing body.

M. E. Barger & Associates, Inc.

Benjamin Godwin
President

#1348352

Entered on transfer record this 4th day of January, 1994.



Susan E. Crockett-Spoon
County Clerk
Brent W. Shelton - Deputy Clerk

State of Florida)
Pinellas County)
The foregoing instrument acknowledged before me, this 24th day of November, 1993, by Benjamin Godwin, President, M. E. Barger & Associates, Inc., on behalf of the corporation.

Denise L. Parham
Notary Public
My App'l. Exp. 4-6-96

State of Kansas)
Sedgwick County)
This is to certify that this plat has been filed for record in the office of the Register of Deeds, this 14th day of JANUARY, 1994, at 10:00 o'clock P.M. and is duly recorded.

Pat Kettler
Register of Deeds

Ed Resa
Deputy