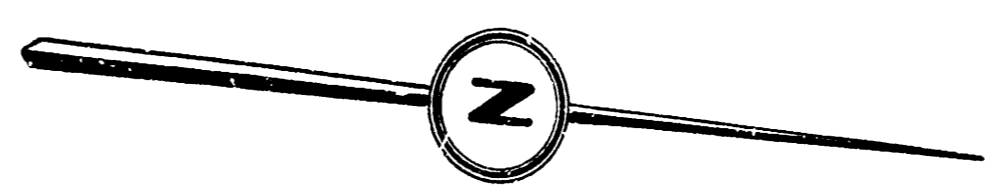
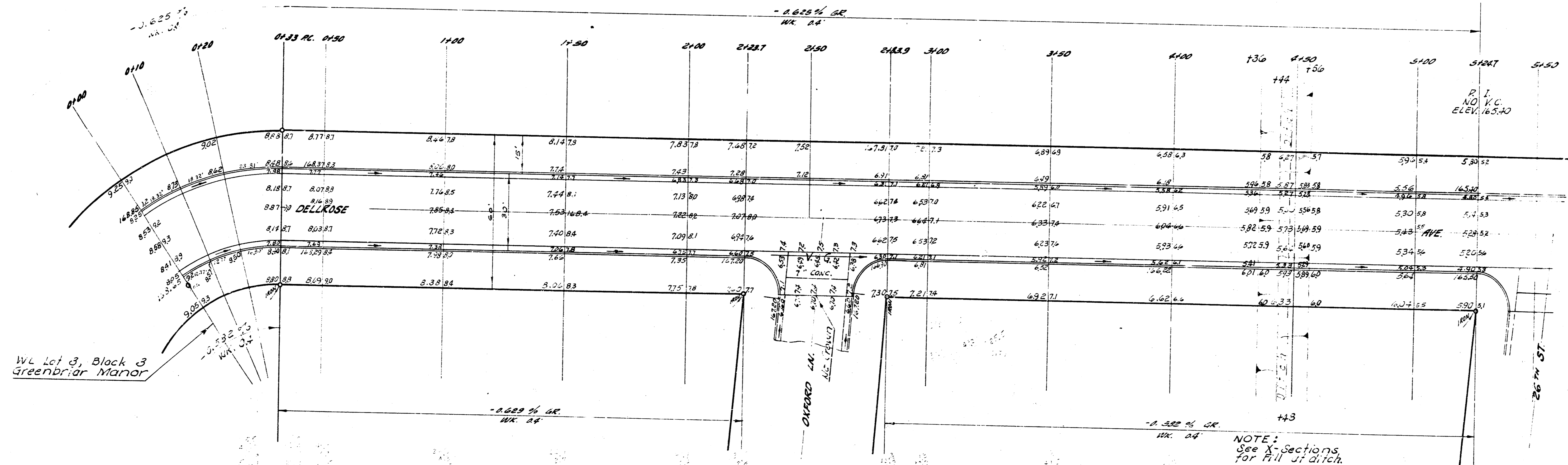


B. M. 168.53 Double Spike 6.5' of Transformer Pole Leds 2-4-6 314.4, 200' N. of 25th St. of 32 20th.
 Stationing on East Prop. Line.

B. M. 168.47 Steel Pin NW side Tale Pole ES Oliver 75' S. of 25th St.
 B. M. 175.233 Std. SIV cor. Oliver & 25th No.



Survey conducted by
 Plan
 City of
 Checked



NOTE:
 For Curve data see plan on
 PEMBROKE LN., Proj. No. C10-18.

EXCAV.	CITY		EARTH WORK		PROP.	
	EXCAV.	FILL	EXCAV.	COMPACTION	EXCAV.	FILL
889	89	82.7	805.7	1000.9		
89		8.3	80.6	100.1		
97.8 cu. yds.		91.0 cu. yd.	886.3 cu. yd.	1104.0 cu. yd.		

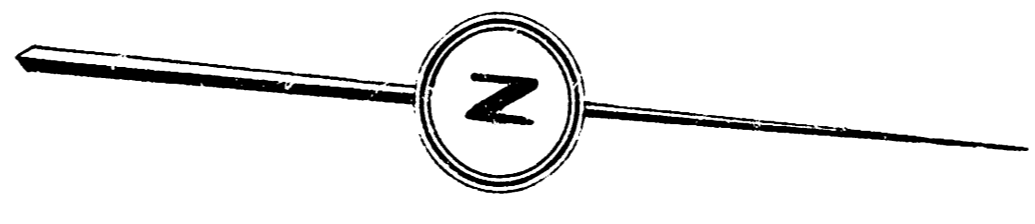
NOTE:
 See X-Sections
 for Fill & ditch.

DELLROSE AVE.

W/2 LOT 3, BLOCK 3,
 GREENBRIAR MANOR TO W/2 LOT 6, BLOCK 7,
 GREENBRIAR MANOR
 26 - 2 - 30 AC.
 CITY OF WICHITA, KANSAS
 S.E. SMITH, CITY ENGINEER
 DATE July 1900 PROJ. NO. C-10-4



3



CURVE DATA					
BASED ON 1:2.82					
R = 71.92		ARC LENGTH = 131.15'			
Δ = 34° 39' 45"		TANGENT DIST. = 38.25'			
STATION	ARC LENGTH	CHORD BEARING	CHORD LENGTH	SUBTANGENT	TANGENT PERPENDICULAR
10+51.6	20'			19° 30' 30"	30° 33' 30"
10+71.6	20'	81.83'	34.24'	7° 14' 21"	1° 18' 04"
10+91.6	20'	81.83'	34.24'	7° 14' 21"	1° 18' 04"
11+11.6	20.00'	82.89'	35.90'	8° 07' 51"	1° 57' 48"
11+31.6	20'	81.83'	34.24'	7° 14' 21"	1° 18' 04"
11+51.6	20'	81.83'	34.24'	7° 14' 21"	1° 18' 04"
11+71.6	30.97'	88.88'	35.89'	8° 27' 30"	1° 54' 45"

