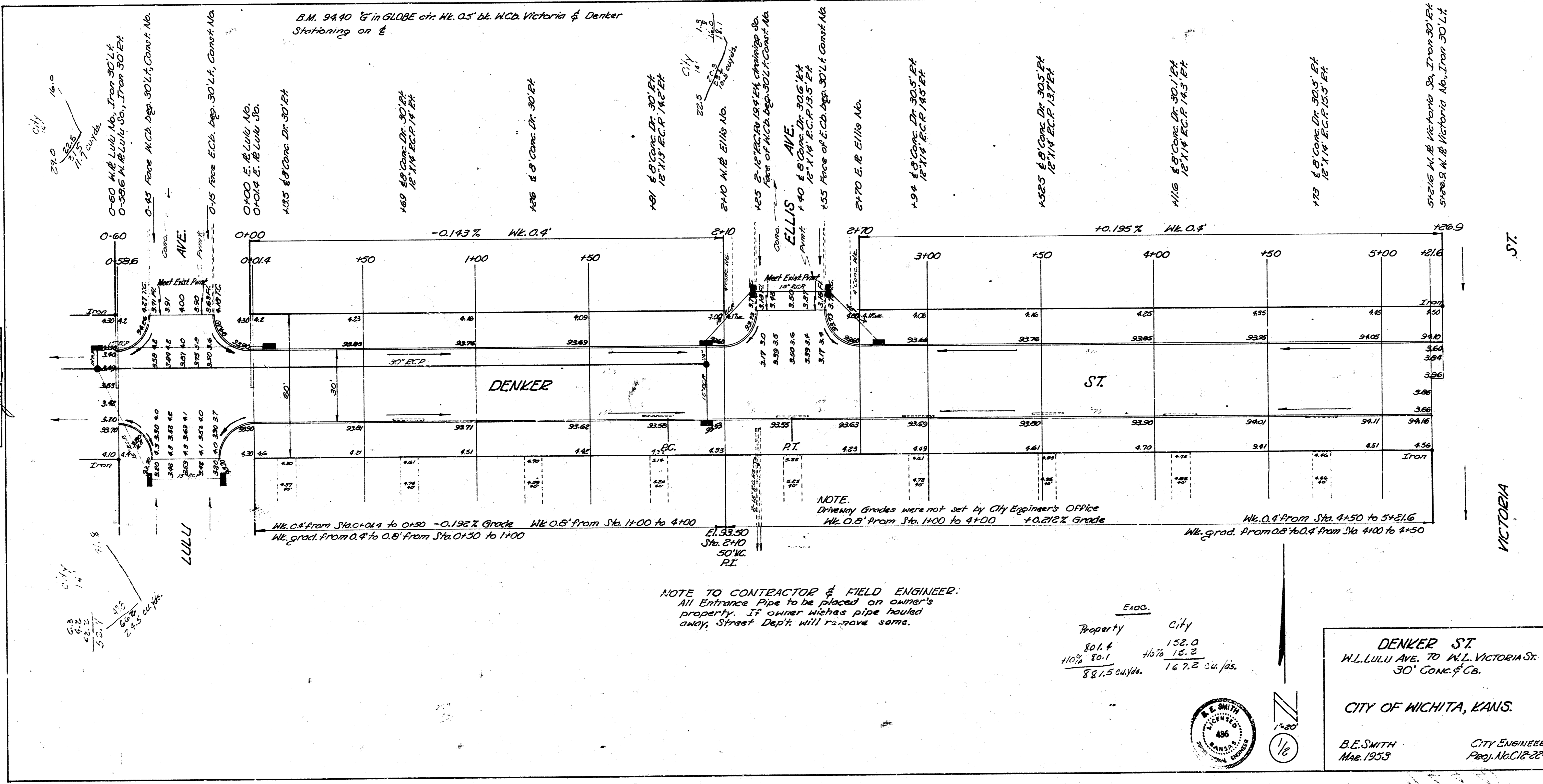


Run by J.G.S.
 Exam. C.C.
 Checked S.H.



B.M. 94.90 6" in GLOBE ch. Nk. 0.5' bt. W.C. Victoria & Denker Stationing on E

NOTE:
 Driveway Grades were not set by City Engineer's Office
 Nk. 0.8' from Sta. 1+00 to 4+00 +0.272% Grade
 Nk. 0.8' from Sta. 4+50 to 5+21.6
 Nk. grad. from 0.8' to 0.8' from Sta. 0+50 to 1+00
 -0.192% Grade
 Nk. 0.8' from Sta. 0+14 to 0+50 -0.192% Grade

NOTE TO CONTRACTOR & FIELD ENGINEER:
 All Entrance Pipe to be placed on owner's property. If owner wishes pipe hauled away, Street Dept. will remove same.

E100.	
Property	City
801.4	152.0
10% 80.1	16.3
881.5 cu. yds.	167.2 cu. yds.



1/16
 1/20

DENKER ST.
 W.L. LULLU AVE. TO W.L. VICTORIA ST.
 30' CONC. & C.C.
 CITY OF WICHITA, KANS.
 B.E. SMITH
 MAR. 1933
 CITY ENGINEER
 PROJ. NO. C18-224