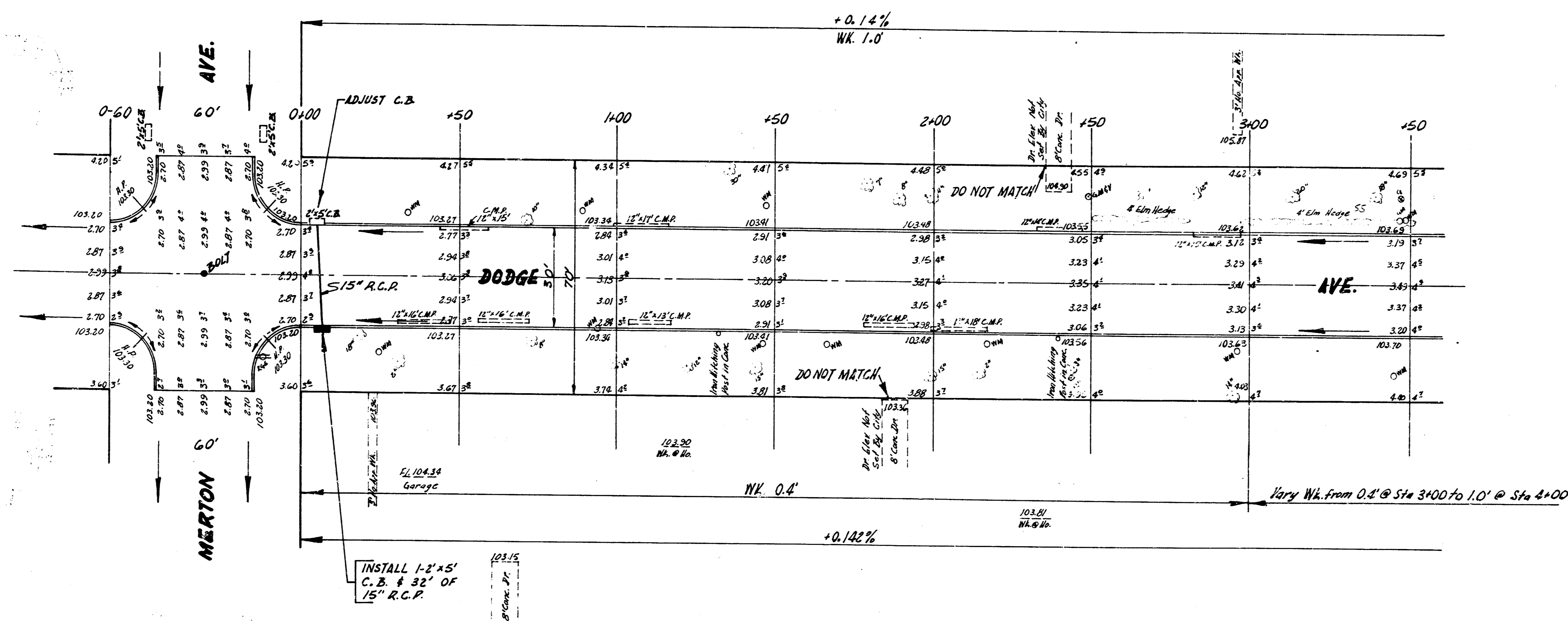


B.M. 104.27 "J" in Jones N.E. Cor. Inter. of N.E. Dodge & Wheeler
 B.M. 108.02 S.E. Cor. conc. porch No. N.W. cor. Dodge & Merton

Base Line = $\frac{1}{2}$



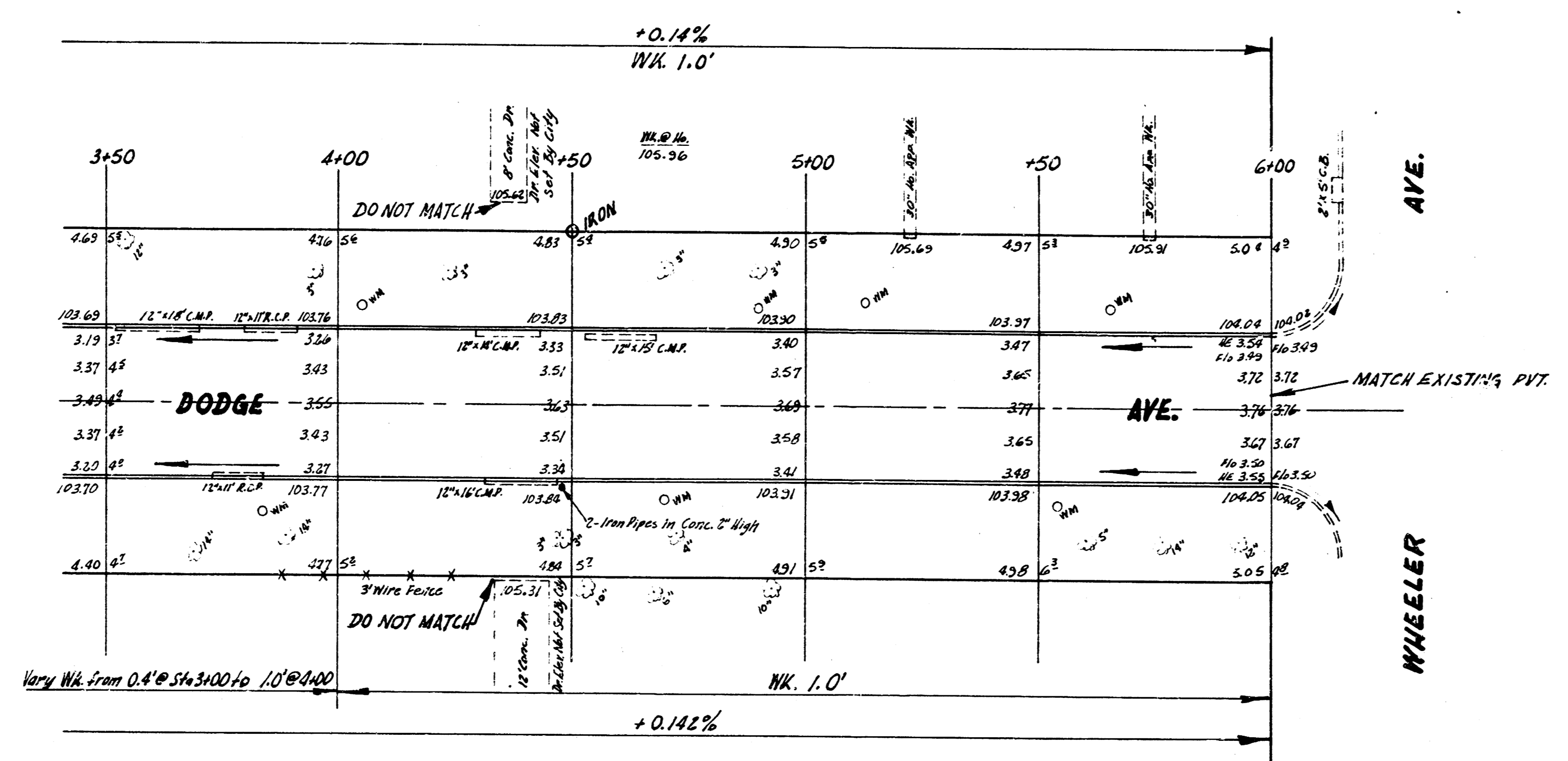
MILLS
 UAZ
 142

NOTE TO FIELD ENGINEER & CONTRACTOR
 All Entrance Pipes are to be Disposed
 of in Accordance with City Dirt Checkers
 Instructions.



DODGE AVE.
 S.L. MERTON - S.L. WHEELER
 30' CONC. & CB.
 CITY OF WICHITA, KANS.
 B.E. SMITH CITY ENGINEER
 SEPT., 1951 PROJ. NO. C14-233

1/3



2/3

DODGE AVE.