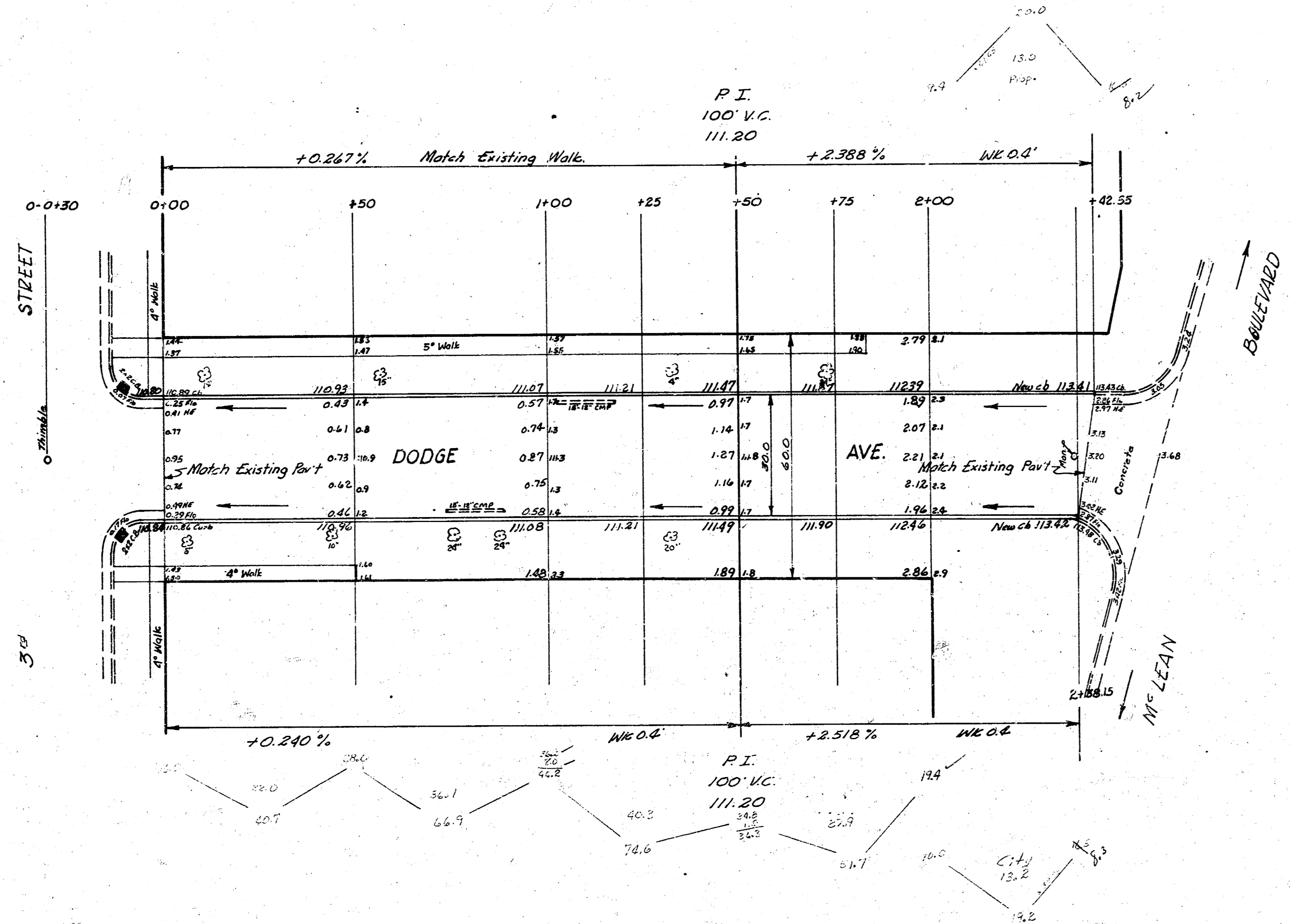
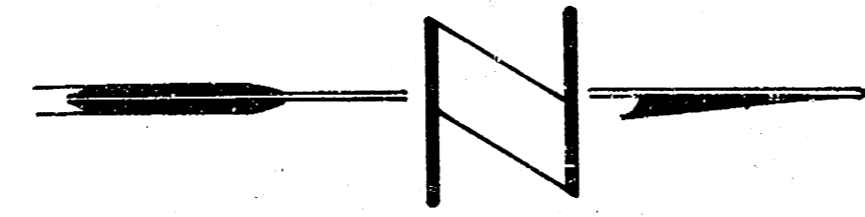


BM-110.72 iron in thimble & 3" & Dodge.



**NOTICE TO CONTRACTOR**  
 All entrance pipes are to be disposed of in accordance with instructions of City Dirt Cleaner.

*Elevation Table*  
 Report -  
 203.7  
 204.4  
 207.5  
 207.5  
 207.5

*City*  
 13.2  
 142.13  
 21.10 + 40

SHOW BY BK 60Y  
 DATE 4/16/57  
 DRAWN BY JH



**DODGE AVENUE**  
 NL 3<sup>rd</sup> to SL M<sup>th</sup> Lean  
 30' Conc & Cb  
 CITY OF WICHITA, KANSAS  
 B.E. SMITH CITY ENGINEER  
 APRIL 1957 PROJ. NO. C16-171