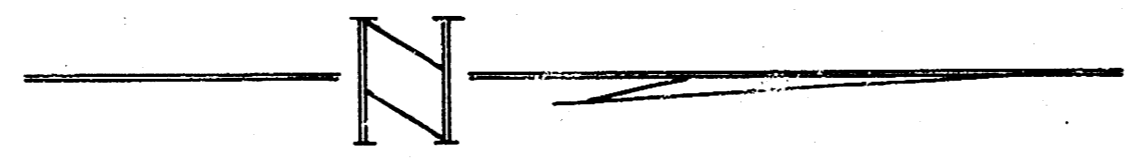


B.M. = 93.00 NE cor conc W.C. @ NE cor garage Ho SW cor Culvert & Dodge.
 Stationing on East Property Line.

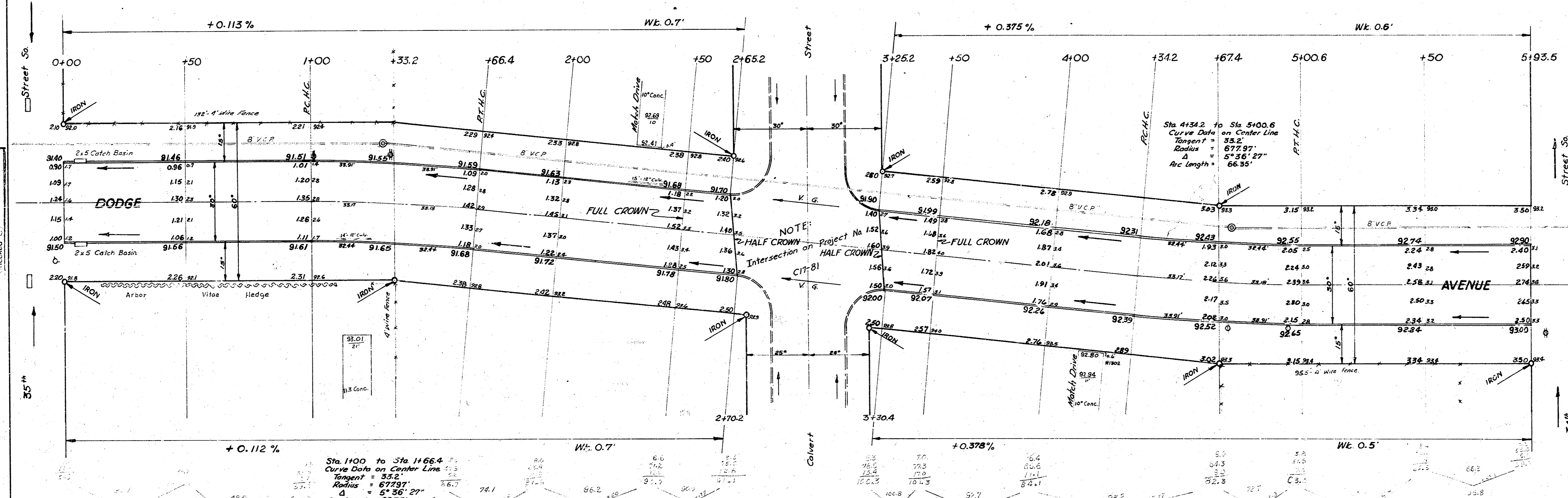


CURVE DATA - Sta. 1+00 to Sta. 1+66.4
 8° offset Wcb. R=700.97 Δ=5° 36' 27"

STATION	Arc Length	Defl. Angle	Total Defl.	Chord Length	Chord Offset
1+00	34.30	1° 24' 06"	1° 24' 06"	34.39	32.04
1+66.4	34.30	1° 24' 07"	2° 48' 13"	34.49	32.04

CURVE DATA: Sta. 4+34.2 to Sta. 5+00.6
 8° offset Wcb. R=654.97 Δ=5° 36' 27"

STATION	Arc Length	Defl. Angle	Total Angle	Chord Length	Chord Offset
4+34.2	32.05	1° 24' 06"	1° 24' 06"	32.04	30.28
5+00.6	32.05	1° 24' 07"	2° 48' 13"	32.04	30.28



Excavation Notes
 Reply -
 1234.1
 1234.4
 1233.5 depth

NOTE:
 HALF CROWN on HALF CROWN Intersection

DODGE AVENUE
 NL 35th St So to SL 34th St So.
 30' Conc. & Cb.
CITY OF WICHITA, KANSAS
 B.E. SMITH CITY ENGINEER
 PROJ. NO. C17-82

