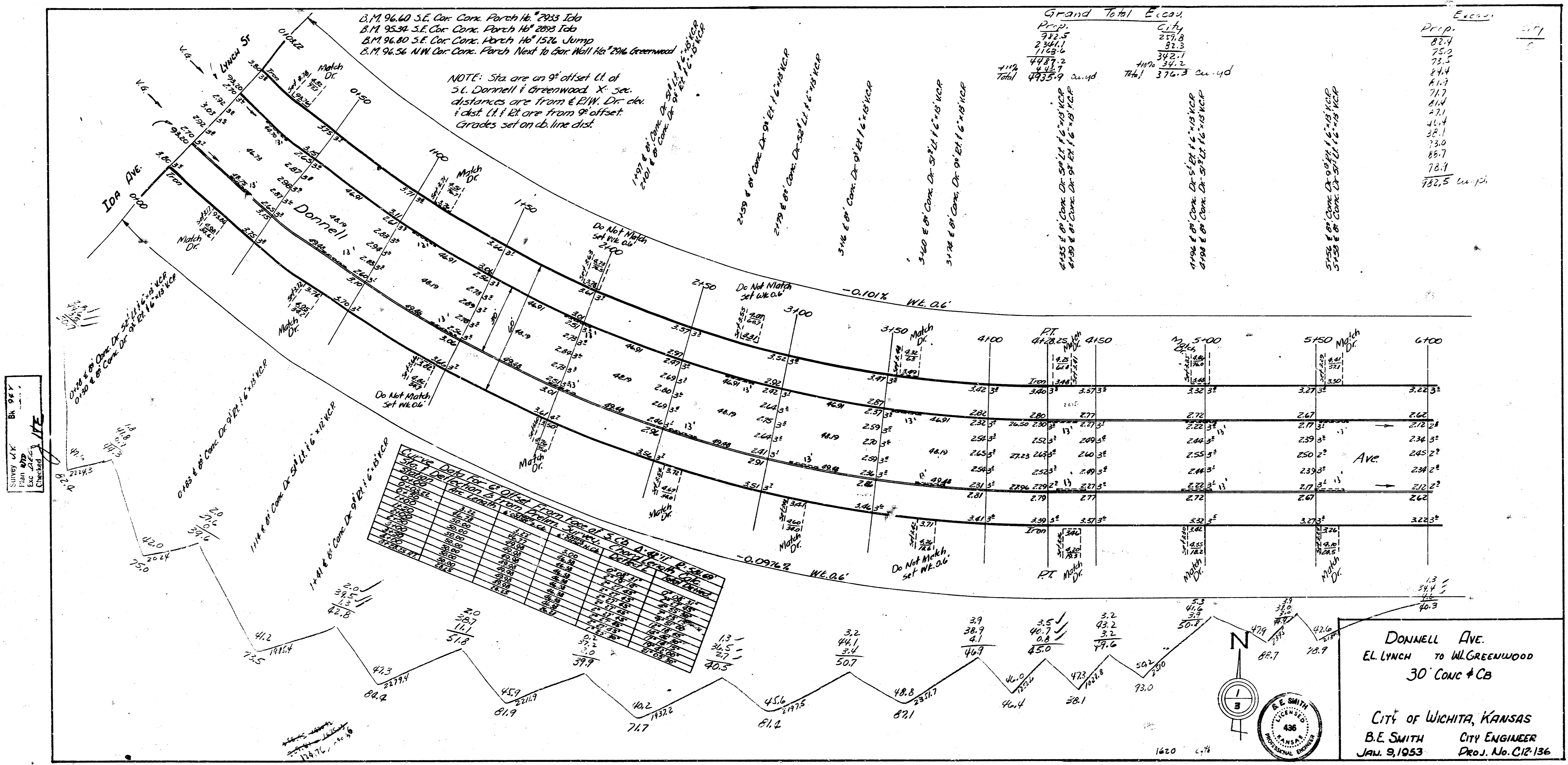


B.M. 96.60 S.E. Cor. Conc. Porch No. 2833 Ida
 B.M. 95.34 S.E. Cor. Conc. Porch No. 2833 Ida
 B.M. 96.80 S.E. Cor. Conc. Porch No. 1576 Jump
 B.M. 96.56 N.W. Cor. Conc. Porch Next to Car Hall No. 284 Greenwood

NOTE: Sta are on 9' offset Lt. of
 S.L. Donnell & Greenwood. X sec.
 distances are from E.B.W. Dr. ckn
 & dist. Lt. Dr. are from 9' offset.
 Grades set on ab. line dist.

Grand Total Ecos	
Prop.	City
772.5	271.8
2344.1	32.3
1152.6	3921
4487.2	346.2
7119	4119
Total 7835.9 cu yd	Total 376.3 cu yd

Excav.	
Prop.	City
82.4	2.7
75.2	
73.5	
24.4	
11.7	
21.4	
27.1	
46.4	
38.1	
73.0	
85.7	
78.7	
732.5 cu yd	



Station	Grade	Depth	Notes
0+00	2.0	11.1	
0+10	2.0	11.1	
0+20	2.0	11.1	
0+30	2.0	11.1	
0+40	2.0	11.1	
0+50	2.0	11.1	
1+00	2.0	11.1	
1+10	2.0	11.1	
1+20	2.0	11.1	
1+30	2.0	11.1	
1+40	2.0	11.1	
1+50	2.0	11.1	
2+00	2.0	11.1	
2+10	2.0	11.1	
2+20	2.0	11.1	
2+30	2.0	11.1	
2+40	2.0	11.1	
2+50	2.0	11.1	
3+00	2.0	11.1	
3+10	2.0	11.1	
3+20	2.0	11.1	
3+30	2.0	11.1	
3+40	2.0	11.1	
3+50	2.0	11.1	
4+00	2.0	11.1	
4+10	2.0	11.1	
4+20	2.0	11.1	
4+30	2.0	11.1	
4+40	2.0	11.1	
4+50	2.0	11.1	
5+00	2.0	11.1	
5+10	2.0	11.1	
5+20	2.0	11.1	
5+30	2.0	11.1	
5+40	2.0	11.1	
5+50	2.0	11.1	
6+00	2.0	11.1	

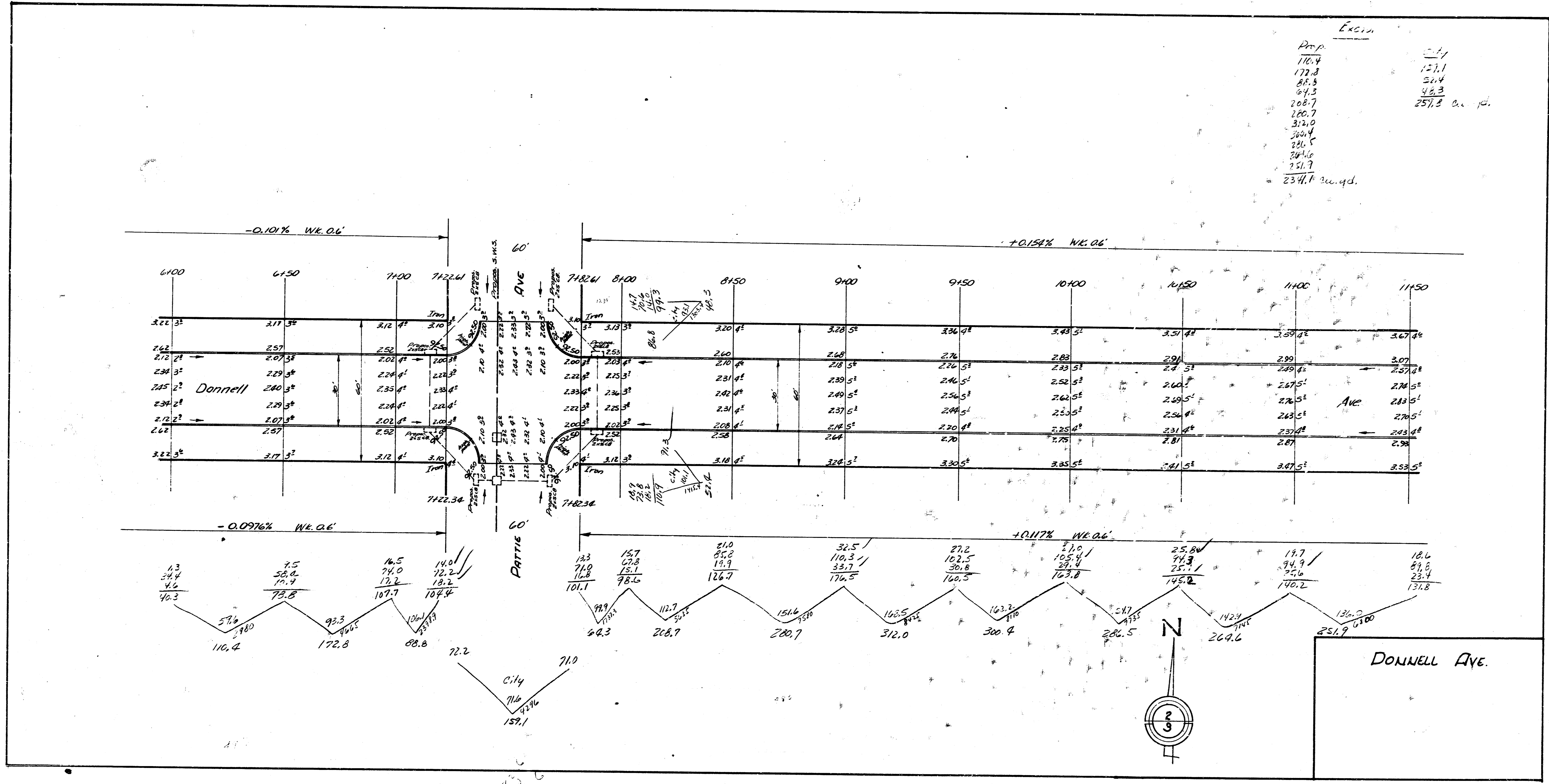
DONNELL AVE.
 EL LYNCH TO WIL GREENWOOD
 30' CONC # CB

CITY OF WICHITA, KANSAS
 B.E. SMITH CITY ENGINEER
 JAN. 9, 1953 PROJ. No. C12-136

Survey by
 Exc. 200
 Checked by
 J.E.

Exc. 11

Prop.	22.7
170.4	151.1
172.8	50.4
80.3	26.3
91.3	257.3 cu. yd.
208.7	
180.7	
312.0	
300.4	
286.5	
281.6	
251.7	
234.1	



Curve Data for 1/2 Offset from face of 3 Cb. A=50'± 12.28'

Station	Chord Length	Chord Length	Deflect. E	Total Deflect
11+50	5.11	2.65	0°18'00"	2°32'30"
11+75	5.00	2.65	3°18'00"	5°50'30"
12+00	5.00	2.65	6°05'30"	9°06'00"
12+25	5.00	2.65	8°51'00"	12°17'00"
12+50	5.00	2.65	11°35'30"	15°22'30"
12+75	5.00	2.65	14°18'00"	18°24'00"
13+00	5.00	2.65	17°00'00"	21°21'00"
13+25	5.00	2.65	19°40'30"	24°13'30"
13+50	5.00	2.65	22°20'00"	27°01'30"
13+75	5.00	2.65	25°00'00"	29°45'00"
14+00	5.00	2.65	27°40'30"	32°34'30"
14+25	5.00	2.65	30°20'00"	35°19'00"
14+50	5.00	2.65	33°00'00"	38°00'00"
14+75	5.00	2.65	35°40'30"	40°36'30"
15+00	5.00	2.65	38°20'00"	43°09'00"
15+25	5.00	2.65	41°00'00"	45°28'30"
15+50	5.00	2.65	43°40'30"	47°44'00"
15+75	5.00	2.65	46°20'00"	49°55'30"
16+00	5.00	2.65	49°00'00"	52°03'00"
16+25	5.00	2.65	51°40'30"	54°06'30"
16+50	5.00	2.65	54°20'00"	56°06'00"
16+75	5.00	2.65	57°00'00"	58°01'30"
17+00	5.00	2.65	59°40'30"	59°53'00"
17+25	5.00	2.65	62°20'00"	61°31'30"
17+50	5.00	2.65	65°00'00"	63°06'00"
17+75	5.00	2.65	67°40'30"	64°36'30"
18+00	5.00	2.65	70°20'00"	66°03'00"
18+25	5.00	2.65	73°00'00"	67°25'30"
18+50	5.00	2.65	75°40'30"	68°44'00"
18+75	5.00	2.65	78°20'00"	69°58'30"
19+00	5.00	2.65	81°00'00"	71°09'00"
19+25	5.00	2.65	83°40'30"	72°15'30"
19+50	5.00	2.65	86°20'00"	73°17'00"
19+75	5.00	2.65	89°00'00"	74°14'30"
20+00	5.00	2.65	91°40'30"	75°07'00"
20+25	5.00	2.65	94°20'00"	75°95'30"
20+50	5.00	2.65	97°00'00"	76°29'00"
20+75	5.00	2.65	99°40'30"	77°49'30"
21+00	5.00	2.65	102°20'00"	78°55'00"
21+25	5.00	2.65	105°00'00"	79°56'30"
21+50	5.00	2.65	107°40'30"	80°53'00"
21+75	5.00	2.65	110°20'00"	81°45'30"
22+00	5.00	2.65	113°00'00"	82°33'00"
22+25	5.00	2.65	115°40'30"	83°16'30"
22+50	5.00	2.65	118°20'00"	83°95'00"
22+75	5.00	2.65	121°00'00"	84°39'30"
23+00	5.00	2.65	123°40'30"	85°45'00"
23+25	5.00	2.65	126°20'00"	86°41'30"
23+50	5.00	2.65	129°00'00"	87°29'00"
23+75	5.00	2.65	131°40'30"	88°08'30"
24+00	5.00	2.65	134°20'00"	88°39'00"
24+25	5.00	2.65	137°00'00"	89°00'00"
24+50	5.00	2.65	139°40'30"	89°51'30"
24+75	5.00	2.65	142°20'00"	90°33'00"
25+00	5.00	2.65	145°00'00"	91°05'00"
25+25	5.00	2.65	147°40'30"	91°27'30"
25+50	5.00	2.65	150°20'00"	91°40'00"
25+75	5.00	2.65	153°00'00"	91°43'30"
26+00	5.00	2.65	155°40'30"	91°38'00"
26+25	5.00	2.65	158°20'00"	91°24'30"
26+50	5.00	2.65	161°00'00"	91°02'00"
26+75	5.00	2.65	163°40'30"	90°41'30"
27+00	5.00	2.65	166°20'00"	90°23'00"
27+25	5.00	2.65	169°00'00"	90°07'30"
27+50	5.00	2.65	171°40'30"	89°54'00"
27+75	5.00	2.65	174°20'00"	89°53'30"
28+00	5.00	2.65	177°00'00"	89°55'00"
28+25	5.00	2.65	179°40'30"	89°58'30"
28+50	5.00	2.65	182°20'00"	89°64'00"
28+75	5.00	2.65	185°00'00"	89°71'30"
29+00	5.00	2.65	187°40'30"	89°80'00"
29+25	5.00	2.65	190°20'00"	89°89'30"
29+50	5.00	2.65	193°00'00"	89°99'00"
29+75	5.00	2.65	195°40'30"	89°108'30"
30+00	5.00	2.65	198°20'00"	89°118'00"
30+25	5.00	2.65	201°00'00"	89°127'30"
30+50	5.00	2.65	203°40'30"	89°136'00"
30+75	5.00	2.65	206°20'00"	89°143'30"
31+00	5.00	2.65	209°00'00"	89°150'00"
31+25	5.00	2.65	211°40'30"	89°155'30"
31+50	5.00	2.65	214°20'00"	89°160'00"
31+75	5.00	2.65	217°00'00"	89°163'30"
32+00	5.00	2.65	219°40'30"	89°166'00"
32+25	5.00	2.65	222°20'00"	89°167'30"
32+50	5.00	2.65	225°00'00"	89°168'00"
32+75	5.00	2.65	227°40'30"	89°167'30"
33+00	5.00	2.65	230°20'00"	89°166'00"
33+25	5.00	2.65	233°00'00"	89°163'30"
33+50	5.00	2.65	235°40'30"	89°159'00"
33+75	5.00	2.65	238°20'00"	89°153'30"
34+00	5.00	2.65	241°00'00"	89°146'00"
34+25	5.00	2.65	243°40'30"	89°137'30"
34+50	5.00	2.65	246°20'00"	89°127'00"
34+75	5.00	2.65	249°00'00"	89°115'30"
35+00	5.00	2.65	251°40'30"	89°103'00"
35+25	5.00	2.65	254°20'00"	89°89'30"
35+50	5.00	2.65	257°00'00"	89°75'00"
35+75	5.00	2.65	259°40'30"	89°60'30"
36+00	5.00	2.65	262°20'00"	89°45'00"
36+25	5.00	2.65	265°00'00"	89°29'30"
36+50	5.00	2.65	267°40'30"	89°14'00"
36+75	5.00	2.65	270°20'00"	88°58'30"
37+00	5.00	2.65	273°00'00"	88°53'00"
37+25	5.00	2.65	275°40'30"	88°47'30"
37+50	5.00	2.65	278°20'00"	88°41'00"
37+75	5.00	2.65	281°00'00"	88°34'30"
38+00	5.00	2.65	283°40'30"	88°27'00"
38+25	5.00	2.65	286°20'00"	88°19'30"
38+50	5.00	2.65	289°00'00"	88°11'00"
38+75	5.00	2.65	291°40'30"	88°02'30"
39+00	5.00	2.65	294°20'00"	87°53'00"
39+25	5.00	2.65	297°00'00"	87°43'30"
39+50	5.00	2.65	299°40'30"	87°33'00"
39+75	5.00	2.65	302°20'00"	87°21'30"
40+00	5.00	2.65	305°00'00"	87°09'00"
40+25	5.00	2.65	307°40'30"	86°55'30"
40+50	5.00	2.65	310°20'00"	86°41'00"
40+75	5.00	2.65	313°00'00"	86°25'30"
41+00	5.00	2.65	315°40'30"	86°09'00"
41+25	5.00	2.65	318°20'00"	85°51'30"
41+50	5.00	2.65	321°00'00"	85°33'00"
41+75	5.00	2.65	323°40'30"	85°13'30"
42+00	5.00	2.65	326°20'00"	84°53'00"
42+25	5.00	2.65	329°00'00"	84°31'30"
42+50	5.00	2.65	331°40'30"	84°09'00"
42+75	5.00	2.65	334°20'00"	83°45'30"
43+00	5.00	2.65	337°00'00"	83°21'00"
43+25	5.00	2.65	339°40'30"	82°55'30"
43+50	5.00	2.65	342°20'00"	82°29'00"
43+75	5.00	2.65	345°00'00"	82°01'30"
44+00	5.00	2.65	347°40'30"	81°33'00"
44+25	5.00	2.65	350°20'00"	81°03'30"
44+50	5.00	2.65	353°00'00"	80°33'00"
44+75	5.00	2.65	355°40'30"	80°01'30"
45+00	5.00	2.65	358°20'00"	79°29'00"
45+25	5.00	2.65	361°00'00"	78°55'30"
45+50	5.00	2.65	363°40'30"	78°21'00"
45+75	5.00	2.65	366°20'00"	77°45'30"
46+00	5.00	2.65	369°00'00"	77°09'00"
46+25	5.00	2.65	371°40'30"	76°31'30"
46+50	5.00	2.65	374°20'00"	75°53'00"
46+75	5.00	2.65	377°00'00"	75°13'30"
47+00	5.00	2.65	379°40'30"	74°33'00"
47+25	5.00	2.65	382°20'00"	73°51'30"
47+50	5.00	2.65	385°00'00"	73°09'00"
47+75	5.00	2.65	387°40'30"	72°25'30"
48+00	5.00	2.65	390°20'00"	71°41'00"
48+25	5.00	2.65	393°00'00"	70°55'30"
48+50	5.00	2.65	395°40'30"	70°09'00"
48+75	5.00	2.65	398°20'00"	69°21'30"
49+00	5.00	2.65	401°00'00"	68°33'00"
49+25	5.00	2.65	403°40'30"	67°43'30"
49+50	5.00	2.65	406°20'00"	66°53'00"
49+75	5.00	2.65	409°00'00"	66°01'30"
50+00	5.00	2.65	411°40'30"	65°09'00"
50+25	5.00	2.65	414°20'00"	64°15'30"
50+50	5.00	2.65	417°00'00"	63°21'00"
50+75	5.00	2.65	419°40'30"	62°25'30"
51+00	5.00	2.65	422°20'00"	61°29'00"
51+25	5.00	2.65	425°00'00"	60°31'30"
51+50	5.00	2.65	427°40'30"	59°33'00"
51+75	5.00	2.65	430°20'00"	58°33'30"
52+00	5.00	2.65	433°00'00"	57°33'00"
52+25	5.00	2.65	435°40'30"	56°31'30"
52+50	5.00	2.65	438°20'00"	55°29'00"
52+75	5.00	2.65	441°00'00"	54°25'30"
53+00	5.00	2.65	443°40'30"	53°21'00"
53+25	5.00	2.65	446°20'00"	52°15'30"
53+50	5.00	2.65	449°00'00"	51°09'00"
53+75	5.00	2.65	451°40'30"	50°01'30"
54+00	5.00	2.65	454°20'00"	48°53'00"
54+25	5.00	2.65	457°00'00"	47°43'30"
54+50	5.00	2.65	459°40'30"	46°33'00"
54+75	5.00	2.65	462°20'00"	45°21'30"
55+00	5.00	2.65	465°00'00"	44°09'00"
55+25	5.00	2.65	467°40'30"	42°55'30"
55+50	5.00	2.65	470°20'00"	41°41'00"
55+75	5.00	2.65	473°00'00"	40°25'30"
56+00	5.00	2.65	475°40'30"	39°09'00"
56+25	5.00	2.65	478°20'00"	37°51'30"
56+50	5.00	2.65	481°00'00"	36°33'00"
56+75	5.00	2.65	483°40'30"	35°13'30"
57+00	5.00	2.65	486°20'00"	33°53'00"
57+25				