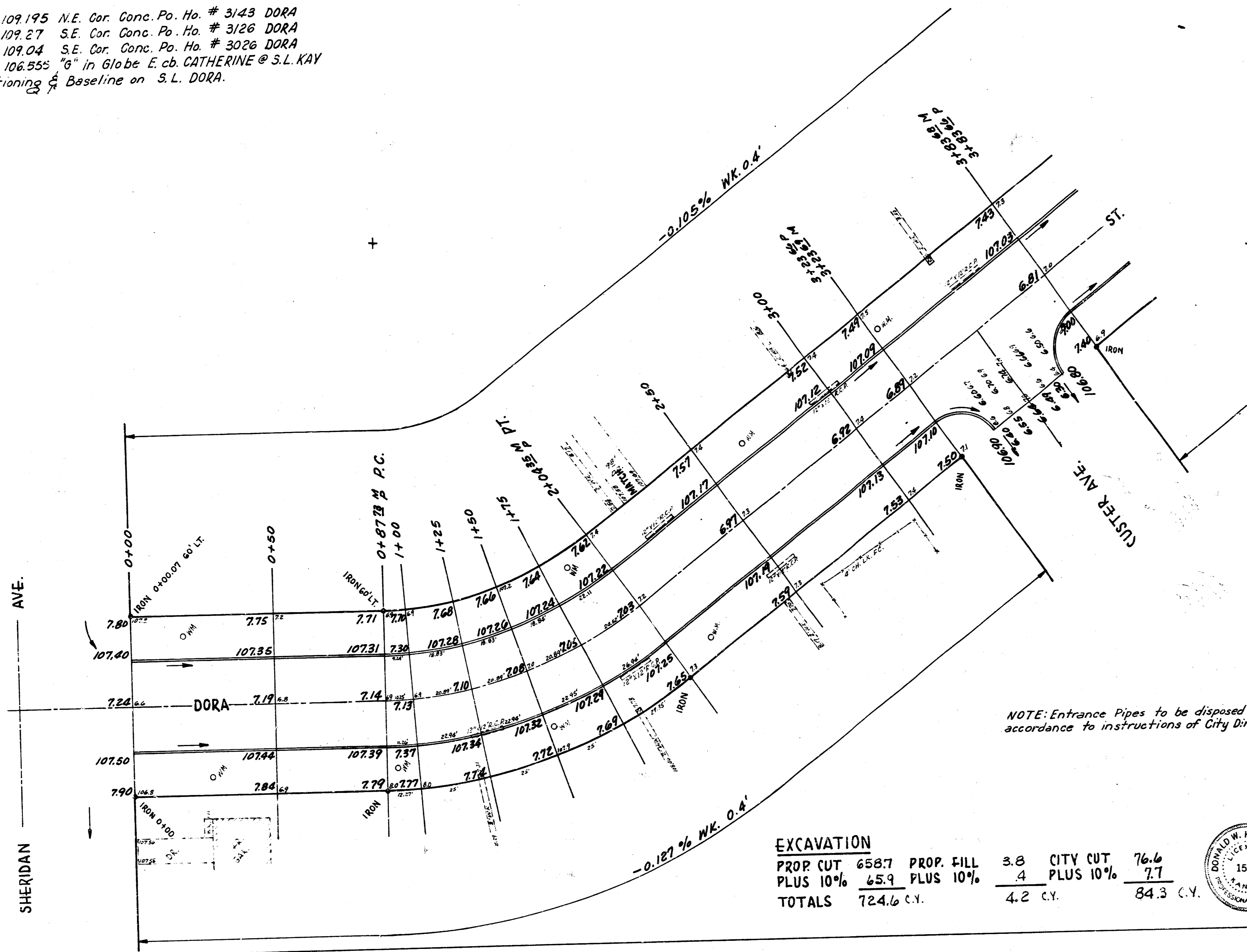


B.M. 109.195 N.E. Cor. Conc. Po. Ho. # 3143 DORA  
 B.M. 109.27 S.E. Cor. Conc. Po. Ho. # 3126 DORA  
 S.M. 109.04 S.E. Cor. Conc. Po. Ho. # 3026 DORA  
 B.M. 106.555 "6" in Globe E. cb. CATHERINE @ S.L. KAY  
 Stationing of Baseline on S.L. DORA.

GLANTZ, J. J. & C. A.  
 HOEFTETTER, J. J. & C. A.  
 Checked 3/14/58



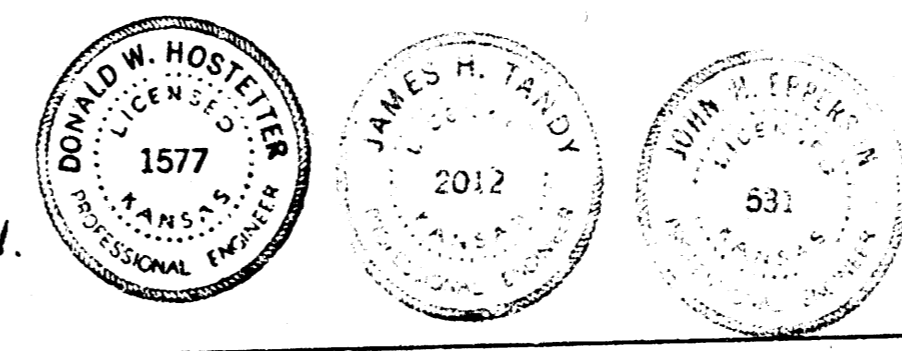
CURVE DATA FROM STA. 0+87.73 TO 2+04.35  
 STA. ON S. E. R = 182.4 Δ 86° 36' L = 9.423648 ft. Arc.

STA.	Chord Lgth. on S' Offset N. Cb.	Chord Lgth. on S' Offset S. Cb.	Deflection Angle	Total Angle Deflection
0+87.73				
1+00	8.70'	11.80'	1° 55' 36"	1° 55' 36"
1+25	17.72	24.02	3° 55' 36"	5° 51' 13"
1+50	17.72	24.02	3° 55' 36"	9° 46' 49"
1+75	17.72	24.02	3° 55' 36"	13° 42' 25"
2+04.35	20.80	28.19	4° 36' 35"	18° 19' 00"

NOTE: Entrance Pipes to be disposed of in accordance to instructions of City Dirt Checker.

EXCAVATION

PROP. CUT	658.7	PROP. FILL	3.8	CITY CUT	76.6
PLUS 10%	65.9	PLUS 10%	.4	PLUS 10%	7.7
TOTALS	724.6 C.Y.		4.2 C.Y.		84.3 C.Y.



DORA  
 E.L. SHERIDAN ~ W.L. CATHERINE  
 30' CONC. & CB.  
 CITY OF WICHITA, KANSAS.  
 B. E. SMITH CITY ENGINEER  
 AUG. 1958 PROJ. NO. C17-123

