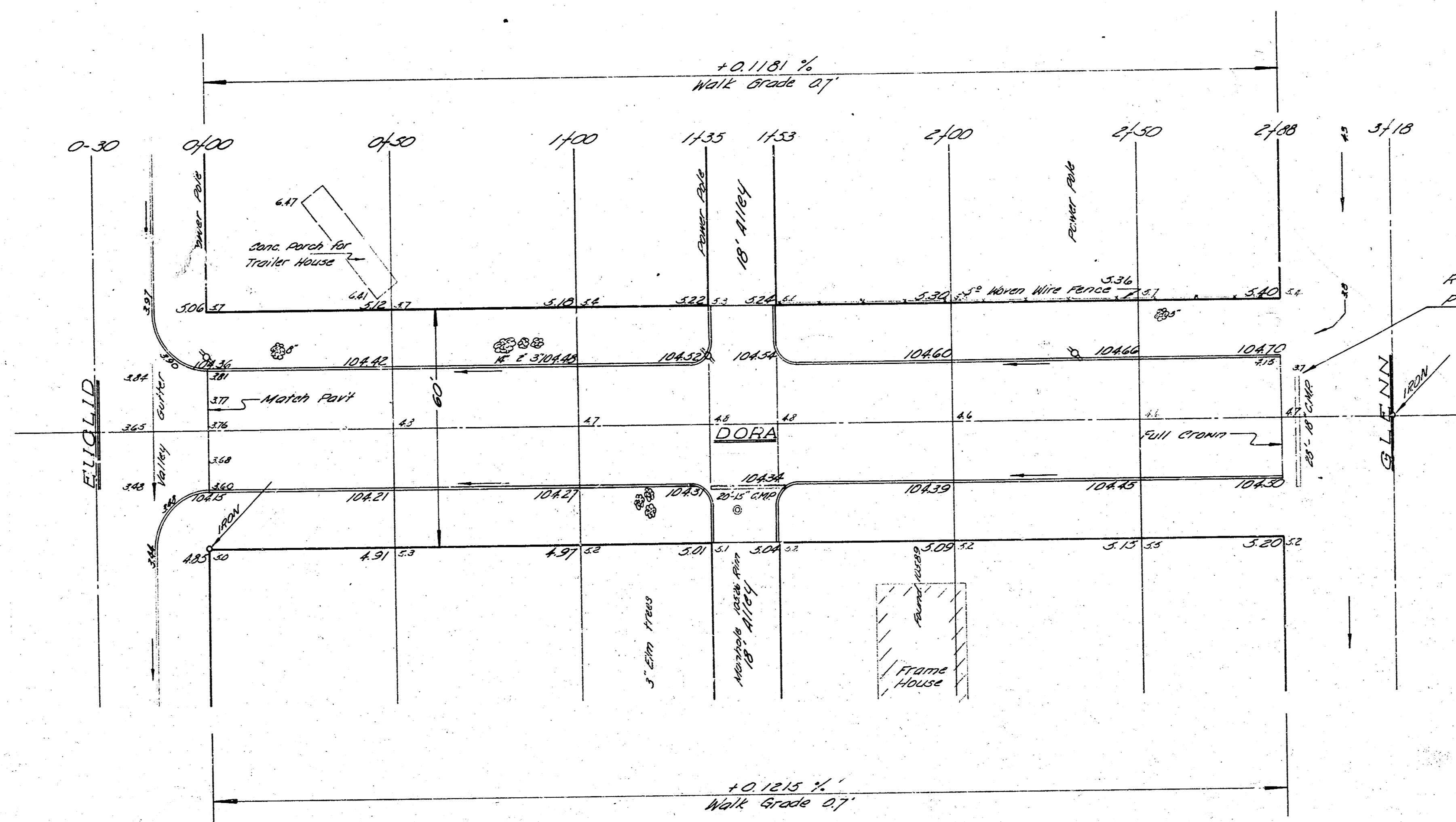


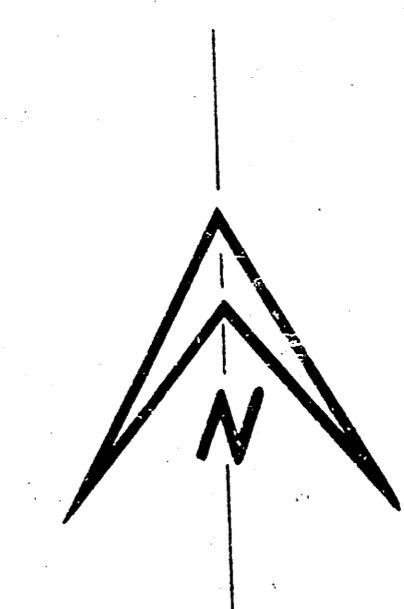
B.M. 10418 "6" in Globe top of E. rod on S.E. cor. Dora & Euclid.
 B.M. 10445 "M" in Mueller top fire hydrant, N.E. cor. Dora & Glenn.
 B.M. 10412 City Standard, S.E. cor. Glenn & May.
 Baseline of Stationing on center line of Dora Avenue.

Sheet 60 of 60
 Plan L.V.
 Date 11/11/11

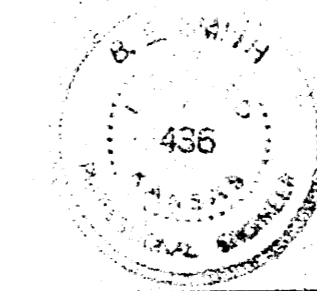
EXCAVATION		CONC. FILL	
PROP.	CITY	PROP.	CITY
3976	459	12	
390	40	0.1	
4374	505	13	



Remove 18" C.M.P. of grade to provide smooth intersection.



Ties to 1000:
 51.70' N.E. to nail in bottle cap, N.W.
 side of 15' elm tree
 30.32' N.W. to nail in bottle cap, S.W.
 side of 8' elm tree.



DORA
 E.L. Euclid ~ W.L. Glenn
 30' Conc. & Cd.
 B.E. Smith City Engineer
 Date: 11/11/11 Proj. No. C10-50