

SHIRLEY KRUG
 P.E. HARRY
 L.S. HENRY
 ENGINEER

B.M. = 156.77 — R.R. Spike N.E. Face P.P. @ N.E. Cor. Doreen & Harry
 B.M. = 142.09 — " " Cut on Conc. Floor @ Center Door #28 of Storage Bldg. @ N.E. Cor. Boston & Longfellow
 E is E Doreen & Boston

Note to Contractor:
 Contact K.G. & E. and
 Bell Telephone Co. for
 Locations of Underground
 Utilities.

EARTHWORK	
PROPERTY:	
Excavation	3122.1 C.Y.
+10%	312.2 C.Y.
Total	3434.3 C.Y.
Compacted Fill	348.0 C.Y.
+10%	34.8 C.Y.
Total	382.8 C.Y.
CITY:	
Excavation	68.5 C.Y.
+10%	6.9 C.Y.
Total	75.4 C.Y.
Compacted Fill	354.8 C.Y.
+10%	35.5 C.Y.
Total	390.3 C.Y.

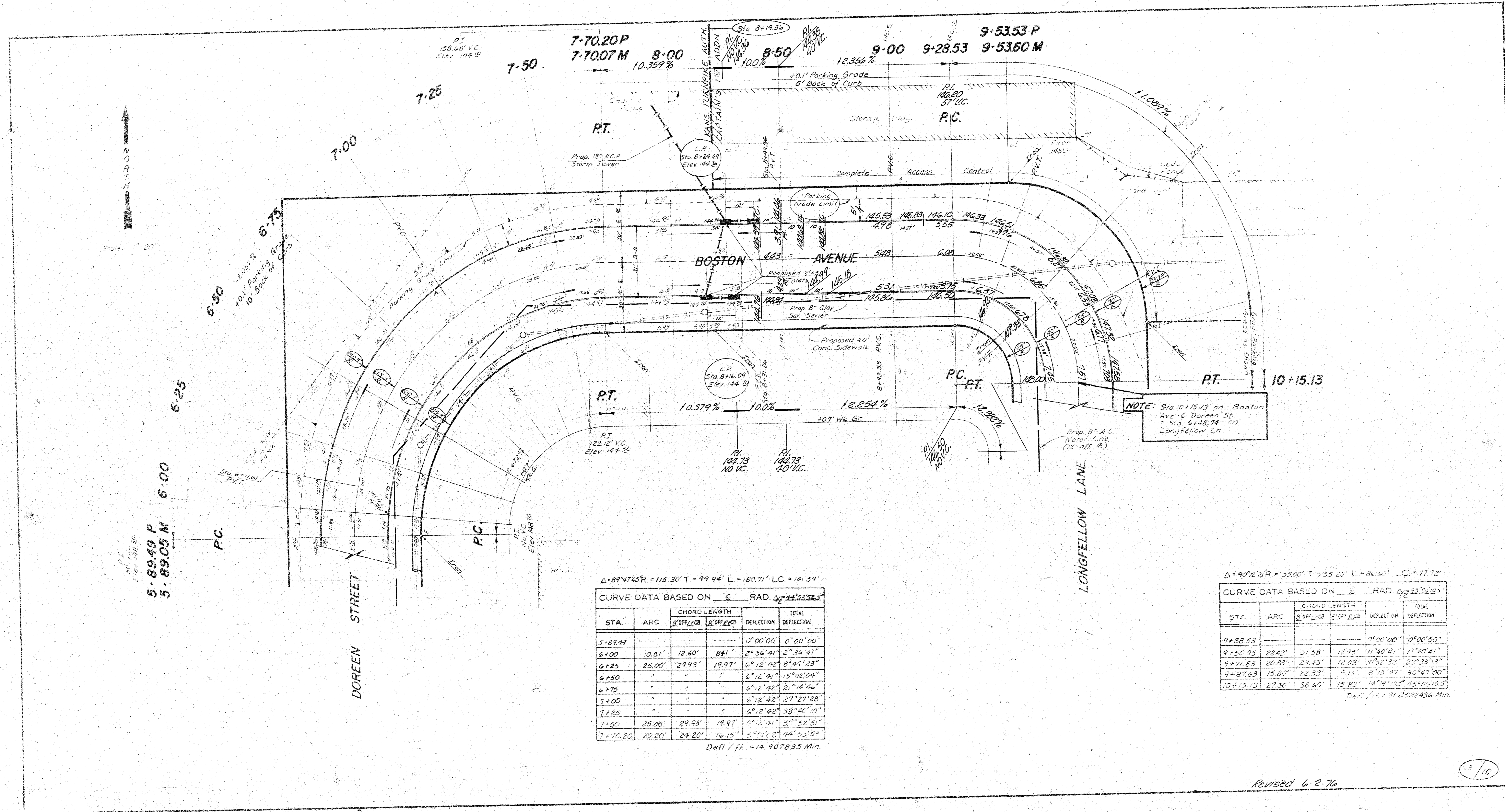
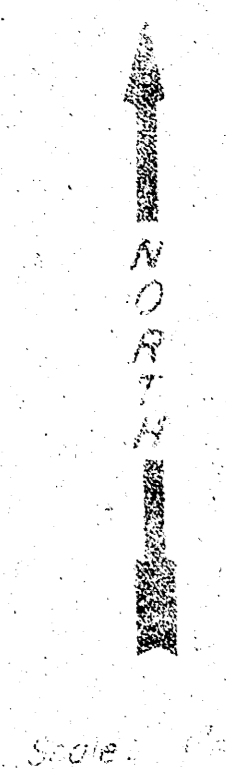
SUB-GRADE
 TYPE OF SUB-GRADE TREATMENT SHALL BE DETERMINED BY THE FIELD ENGINEER. SUB-GRADE TREATMENT MAY CONSIST OF LIME TREATMENT, CEMENT TREATMENT, SUB-GRADE STABILIZATION, OR ANY COMBINATION OF THESE.

NOTE TO FIELD ENGINEER & CONTRACTOR
 Grade posting and clear right-of-way for projects 2+26.75. Compact fill in subgrade work.

Manipulation = 5367.5 S.Y.

2/10

**DOREEN ST., BOSTON AVE.,
 LONGFELLOW LN.**
 N.L. Harry St. to the N.L. Harry St.
 (31' B-B 6" Conc. Pavt. w/ Int. Curb)
CITY of WICHITA, KANSAS
 R.W. Linn ——— City Engineer
 Proj. No. ——— DAKS 575057
 Date May - 76



$\Delta = 89^{\circ}47'45'' R = 115.30' T = 99.94' L = 180.71' LC = 141.59'$

CURVE DATA BASED ON $\Delta = 89^{\circ}47'45'' R = 115.30'$

STA.	ARC	CHORD LENGTH S'	CHORD BEARING S'	DEFLECTION D'	TOTAL DEFLECTION
5+89.49				0° 00' 00"	0° 00' 00"
6+00	10.51'	12.40'	84°	2° 36' 41"	2° 36' 41"
6+25	25.00'	29.93'	19.97'	6° 12' 41"	8° 49' 23"
6+50	"	"	"	6° 12' 41"	15° 02' 04"
6+75	"	"	"	6° 12' 42"	21° 14' 46"
7+00	"	"	"	6° 12' 42"	27° 27' 28"
7+25	"	"	"	6° 12' 42"	33° 40' 10"
7+50	25.00'	29.93'	19.97'	6° 12' 41"	39° 52' 51"
7+75.20	20.20'	24.20'	16.15'	2° 21' 22"	44° 55' 53"

Defl. / ft. = 14.907835 Min.

$\Delta = 90^{\circ}21' R = 55.00' T = 55.20' L = 86.40' LC = 77.92'$

CURVE DATA BASED ON $\Delta = 90^{\circ}21' R = 55.00'$

STA.	ARC	CHORD LENGTH S'	CHORD BEARING S'	DEFLECTION D'	TOTAL DEFLECTION
9+28.53				0° 00' 00"	0° 00' 00"
9+50.95	22.42'	31.58'	12.95'	11° 40' 41"	11° 40' 41"
9+71.83	20.88'	29.43'	12.08'	10° 52' 32"	22° 33' 13"
9+87.63	15.80'	22.53'	9.16'	8° 13' 47"	30° 47' 00"
10+15.13	27.50'	38.60'	15.84'	14° 19' 05"	45° 06' 10.5"

Defl. / ft. = 31.252436 Min.

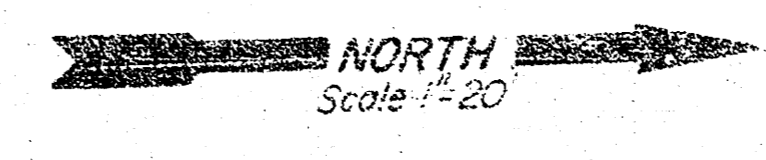
NOTE: Sta 10+15.13 on Boston Ave. & Doreen St. = Sta 6+48.74 on Longfellow Ln.

Revised 6-2-76

3/10

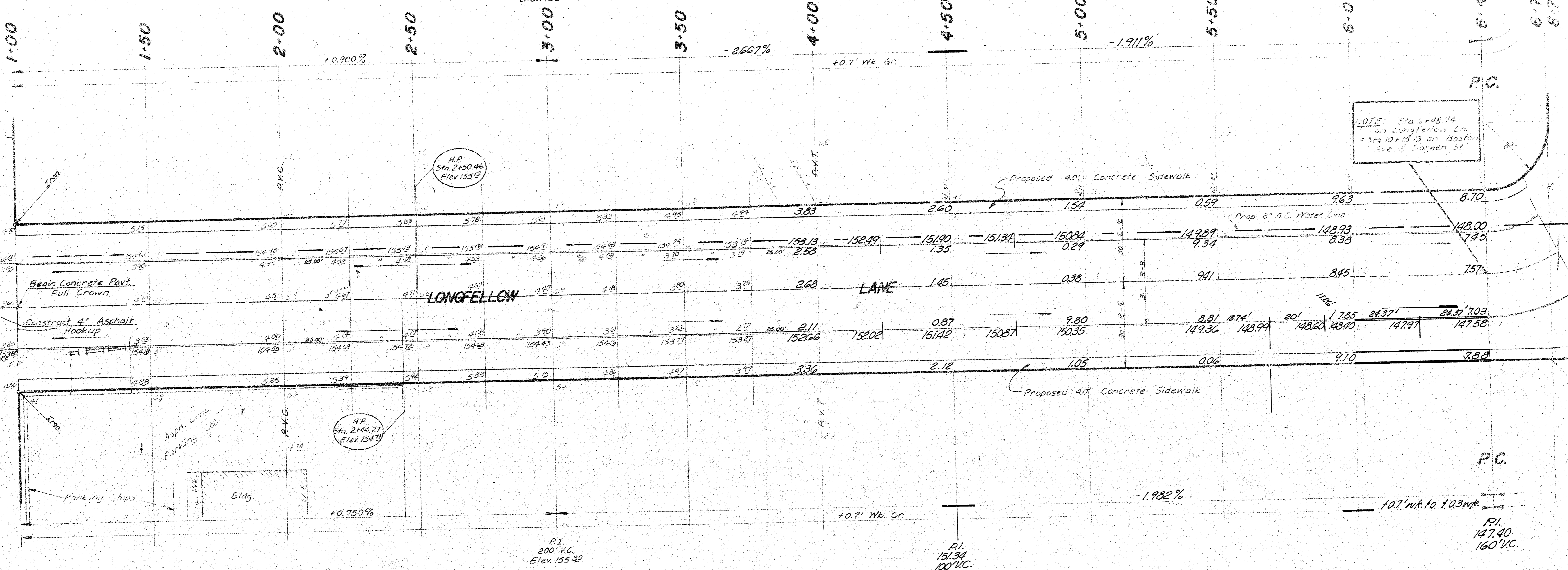
FILMED FROM THE BEST AVAILABLE COPY

B.M. = 156.77 R.R. Spike N.E. Facs P.R. @ N.E. Cor. Doreen & Harry
 B.M. = 142.11 "5" Cut on Conc. Floor @ Center Door #28 of Storage Bldg. @ N.E. Cor. Boston & Longfellow
 @ & Longfellow Ln.



HARRY STREET

EASTON AVE.



NOTE: Sta. 6+48.74 on Longfellow Ln. + Sta. 10+15.13 on Boston Ave. & Doreen St.

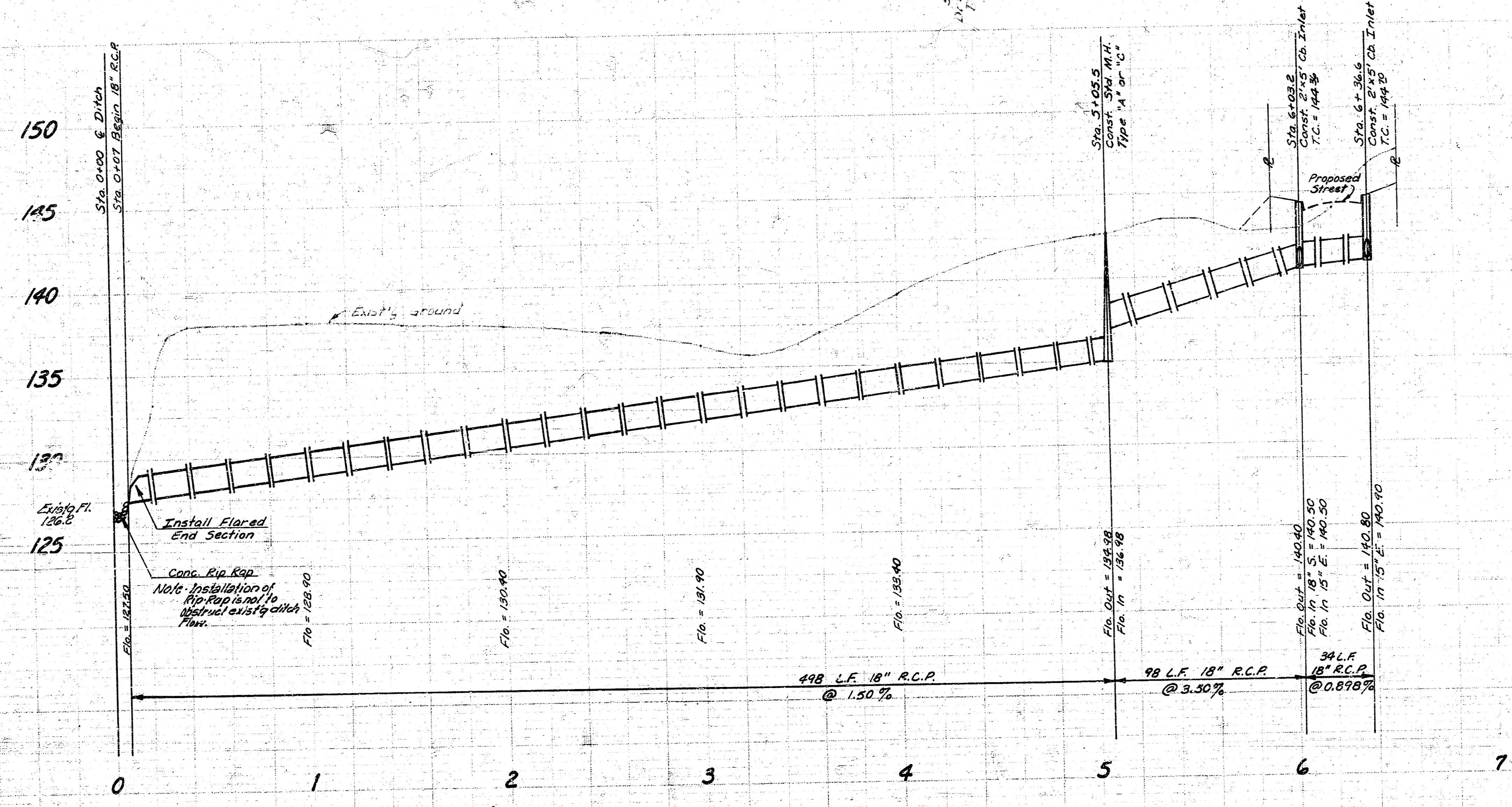
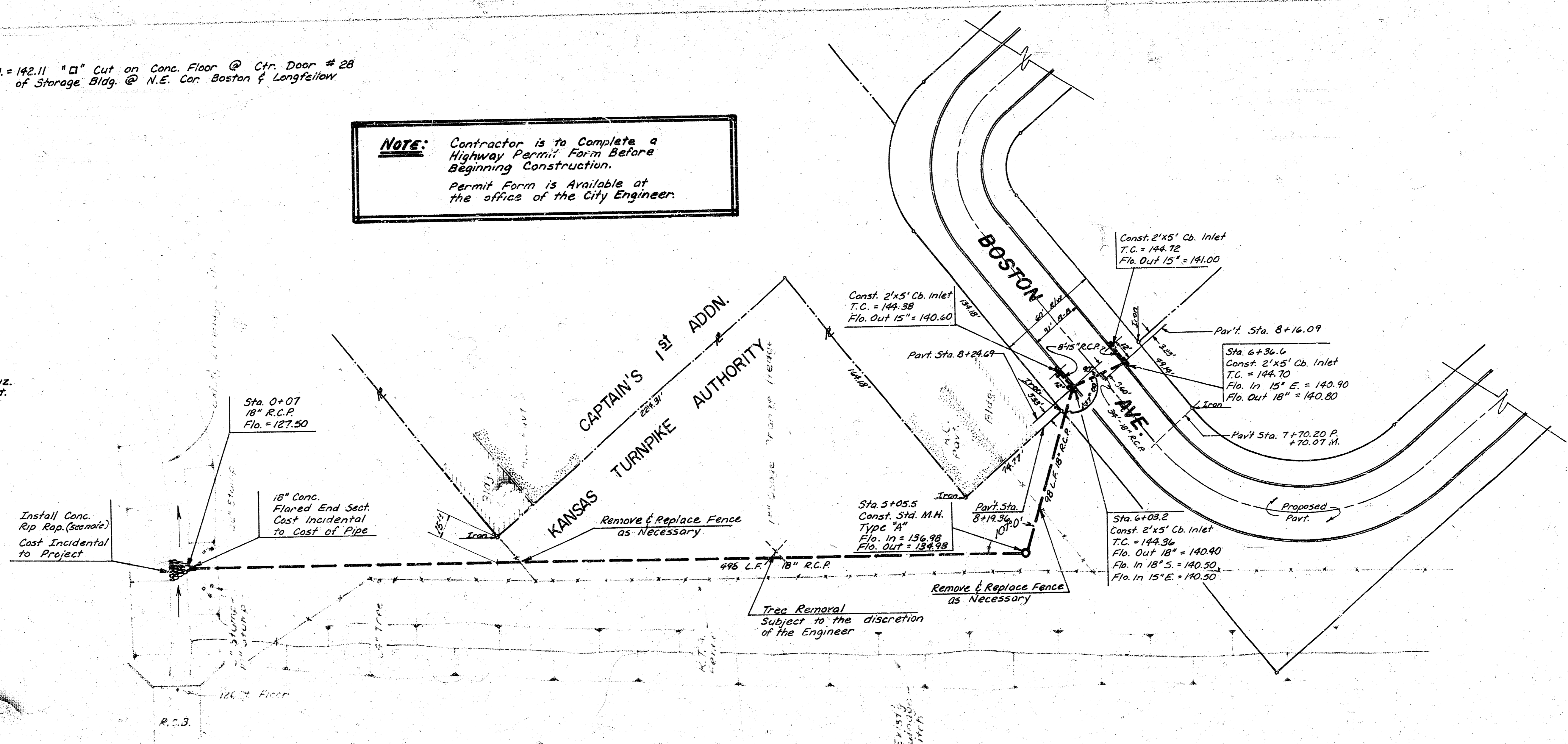
Revised 6-2-76

FILMED FROM THE BEST AVAILABLE COPY

B.M. = 142.11 "□" Cut on Conc. Floor @ Ctr. Door # 28
of Storage Bldg. @ N.E. Cor. Boston & Longfellow

NOTE: Contractor is to Complete a Highway Permit Form Before Beginning Construction.
Permit Form is Available at the office of the City Engineer.

SCALE:
PLAN: 1" = 40'
PROFILE: 1" = 40' Horiz.
1" = 5' Vert.



DRAINAGE
In Connection With Paving
DOREEN ST., BOSTON AVE. & LONGFELLOW LN.
CITY OF WICHITA, KANSAS
R.W. Linn City Engineer
Proj. No. DAKD575057
Date May 76

(8/10)