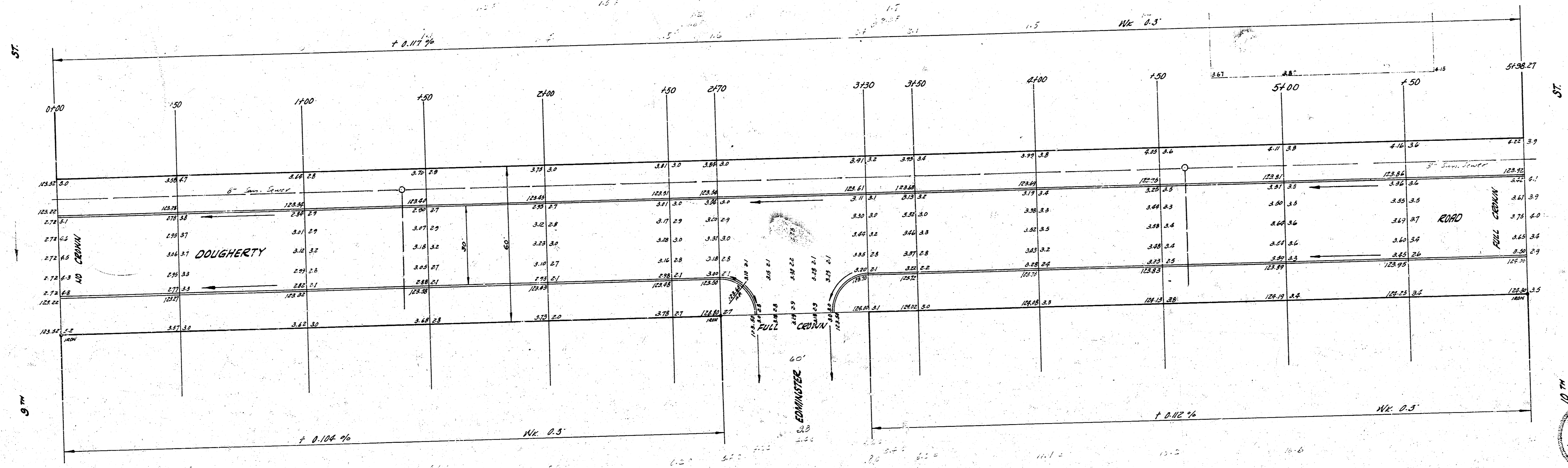
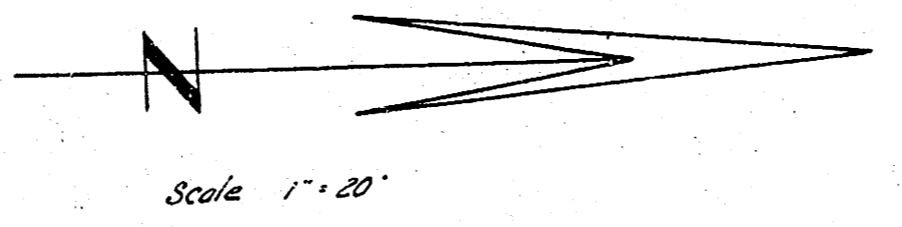


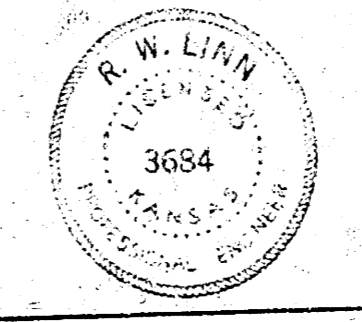
B.M. 124.94 DOUBLE SPIKE N.S. K.G.E. POLE N.S. 9TH ST. E. NEARBY
 B.M. 123.24 RR. SPIKE N.S. ALP. N. POLE OF W. FRAME TRANSFORMER PALES
 180 N. OF 10TH - 30° E. OF DOUGHERTY



Shown here as per
 City of Wichita
 1928

Excavation		FILL	
PROP.	CITY	PROP.	CITY
115.2	3.9	115.3	10.6
115.7	3.9	115.7	11.7
116.2	3.3	116.2	11.7

NOTE TO CONTRACTOR & FIELD ENGR.:
 Sanitary Sewers are to be extended
 by others, prior to paving.



DOUGHERTY ROAD
 N.L. 9TH TO S.L. 10TH
 30' CONC. & CB.
 CITY OF WICHITA, KANSAS
 B. E. SMITH, CITY ENGINEER
 PROJ. NO. C14-21
 1944, 1952

