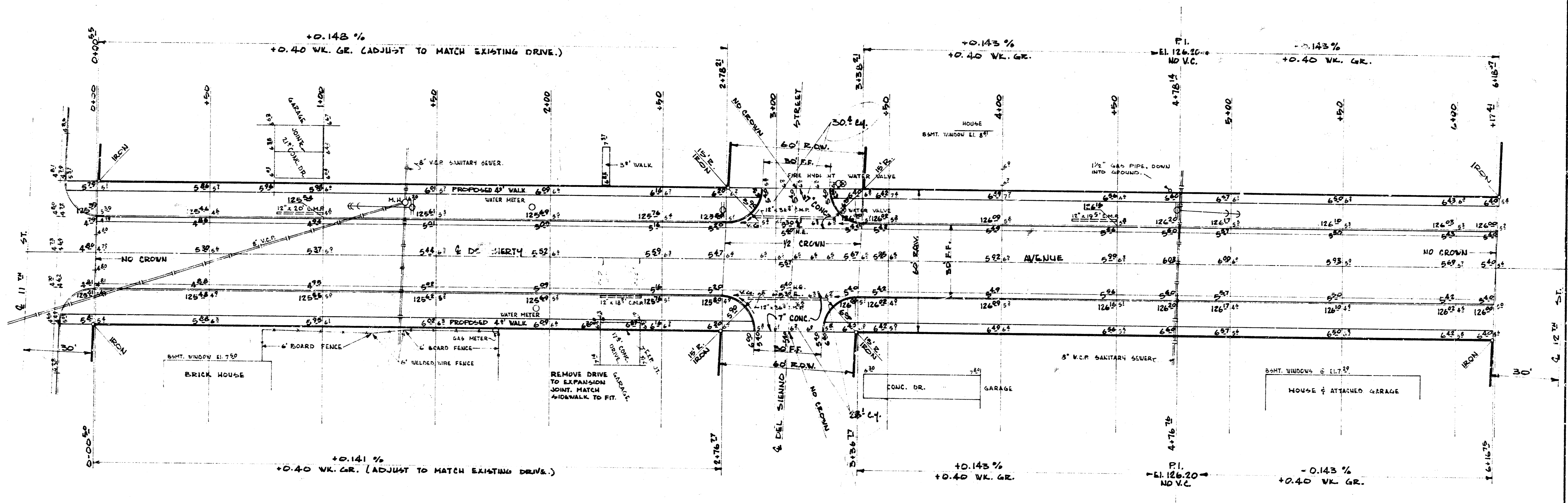


E.M. 125.01 1/2" IN GLOBE TOP E. CB. DOUGHERTY AT S.L. 11TH ST.
 B.M. 124.33 R.R. 4TH PK. S.S. SIDE P POLE ON S.W. COR. DOUGHERTY & DEL SIEMOND.
 B.M. 126.30 R.R. 4TH PK. S.S. SIDE P POLE ON N.W. COR. 12TH & DOUGHERTY.
 BASE LINE ON $\frac{1}{2}$ DOUGHERTY ST.

SCALE: 1" = 20'



NOTE:
 GRADE PARKING, CLEAR R.O.V. & PLACE COMPACTED
 BACKFILL FOR PROPOSED 4' SIDEWALK.
 SIDEWALK TO BE CONSTRUCTED BY OTHERS.

EARTHWORK

EXCAVATION	CITY	COMP. FILL
PROPERTY	PROPERTY	PROPERTY
647.5 C.Y.	144.4 C.Y.	24.0 C.Y.
64.8	14.4	2.4
TOTAL	786.3 C.Y.	26.4 C.Y.

DOUGHERTY AVENUE — FROM N.L. 11TH ST.
 TO S.L. 12TH ST.
 26'-2'-30" ASPH. CONC.
 CITY OF WICHITA, KANSAS
 B.E. SMITH — CITY ENGINEER.
 DATE: AUG. 1968 PROJECT NO. C18-58
 SHEET 1 of 3