

STREET IMPROVEMENTS

for

DORIS STREET

From S. Line of CHERRY ORCHARD 3RD ADDN.
to S. Line of CENTRAL AVE.

PROJECT NUMBER

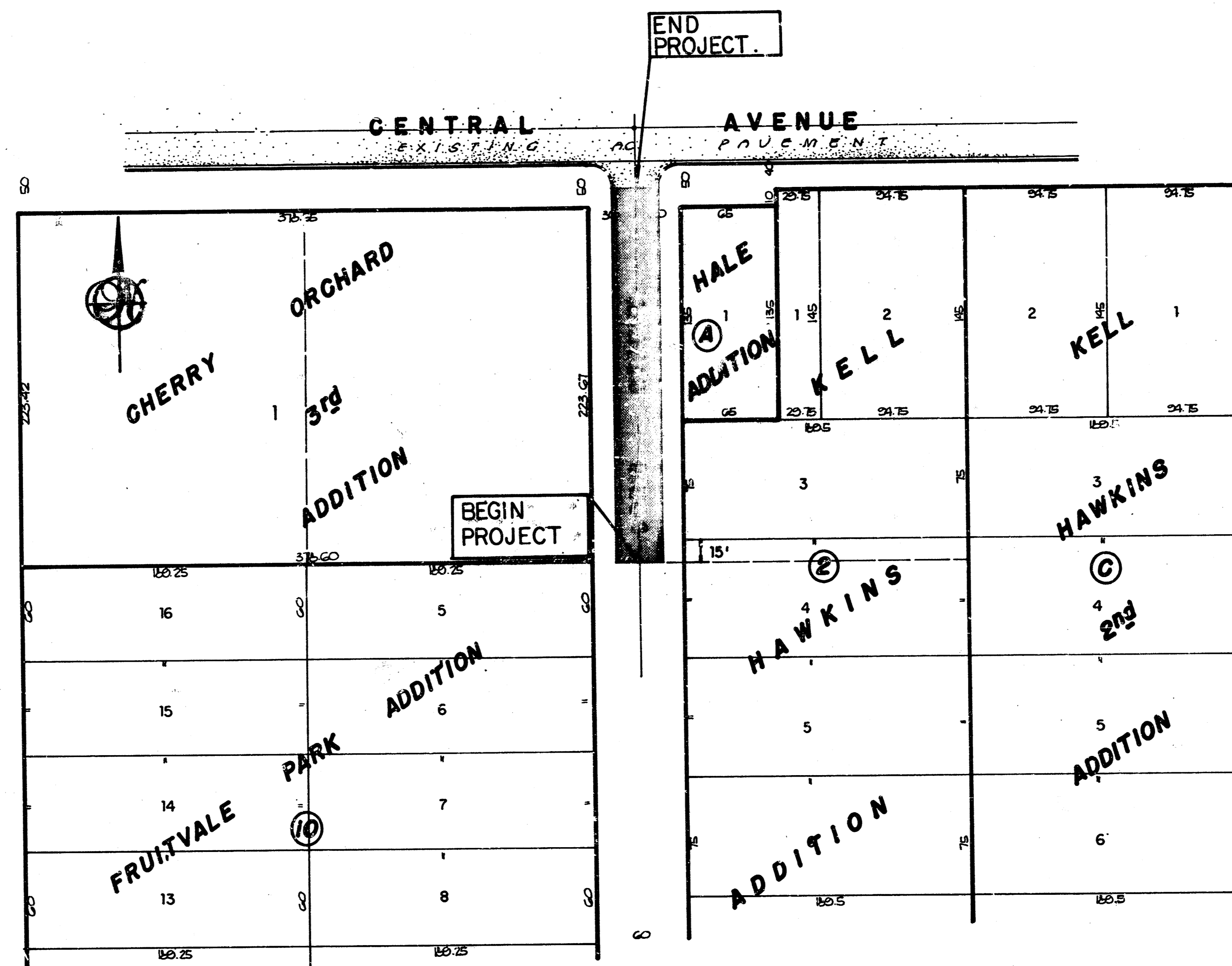
472-76-245-81582-000-000-001

CITY of WICHITA, KANSAS

MICHAEL E. LINDEBAK
CITY ENGINEER

GENERAL NOTES

- No more than 4 drives 20 feet in width, or equivalent combinations thereof, are to be constructed with this project.
- Mailboxes within the limits of the project shall be removed and replaced by the Contractor as approved by the Engineer. Contractor will be required to make satisfactory provisions for mail delivery to properties affected by this project during its construction.
- Trees and shrubs in public right-of-way which are in direct conflict with proposed new construction shall be removed by the Contractor with the Engineer's approval. Trees and shrubs which are not in direct conflict with proposed new construction shall be saved and protected from damage.
- The Contractor shall be responsible for preserving property irons. The Contractor will be required to re-establish any property irons which are damaged or destroyed by his construction operations. Such irons shall be re-established by a licensed land surveyor or a licensed professional engineer in accordance with state laws.
- Contractor shall contact Don Morgan, KG&E 261-6434 for the relocation of the down guys and allow at least 10 days for KGE to perform the work.



INDEX of SHEETS

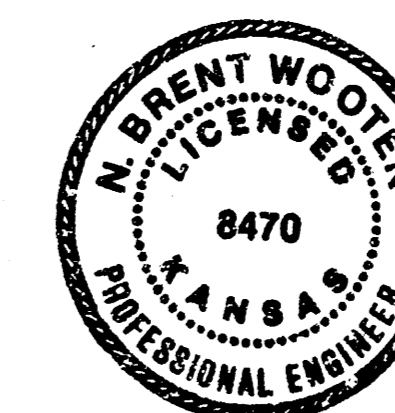
TITLE SHEET.....	1
TYPICAL SECTION.....	2
STREET PLAN.....	3
EARTHWORK SECTIONS.....	4

BENCHMARKS

- Railroad Spikes East side
Power Pole @ Sta. of G2, 21' 4"
Elevation 124.02 City Datum
- 1' Cut on top of curb @ Sta. 146+6
46' 1" left South end of East return
of drive entrance to lot 1 Cherry
Orchard 3rd Addition.
Elevation 123.66 City Datum

BENEFIT DISTRICT

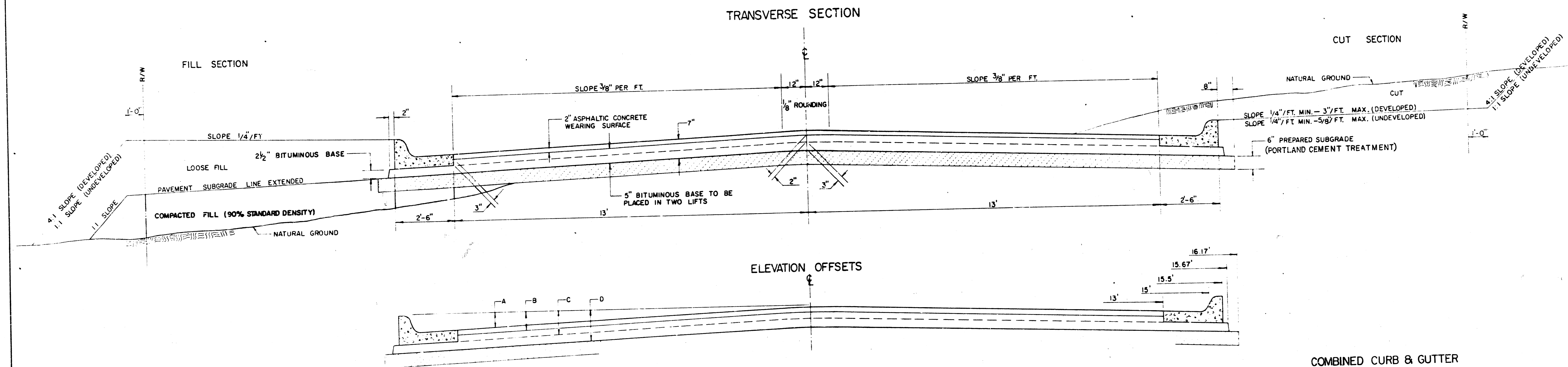
TITLE SHEET



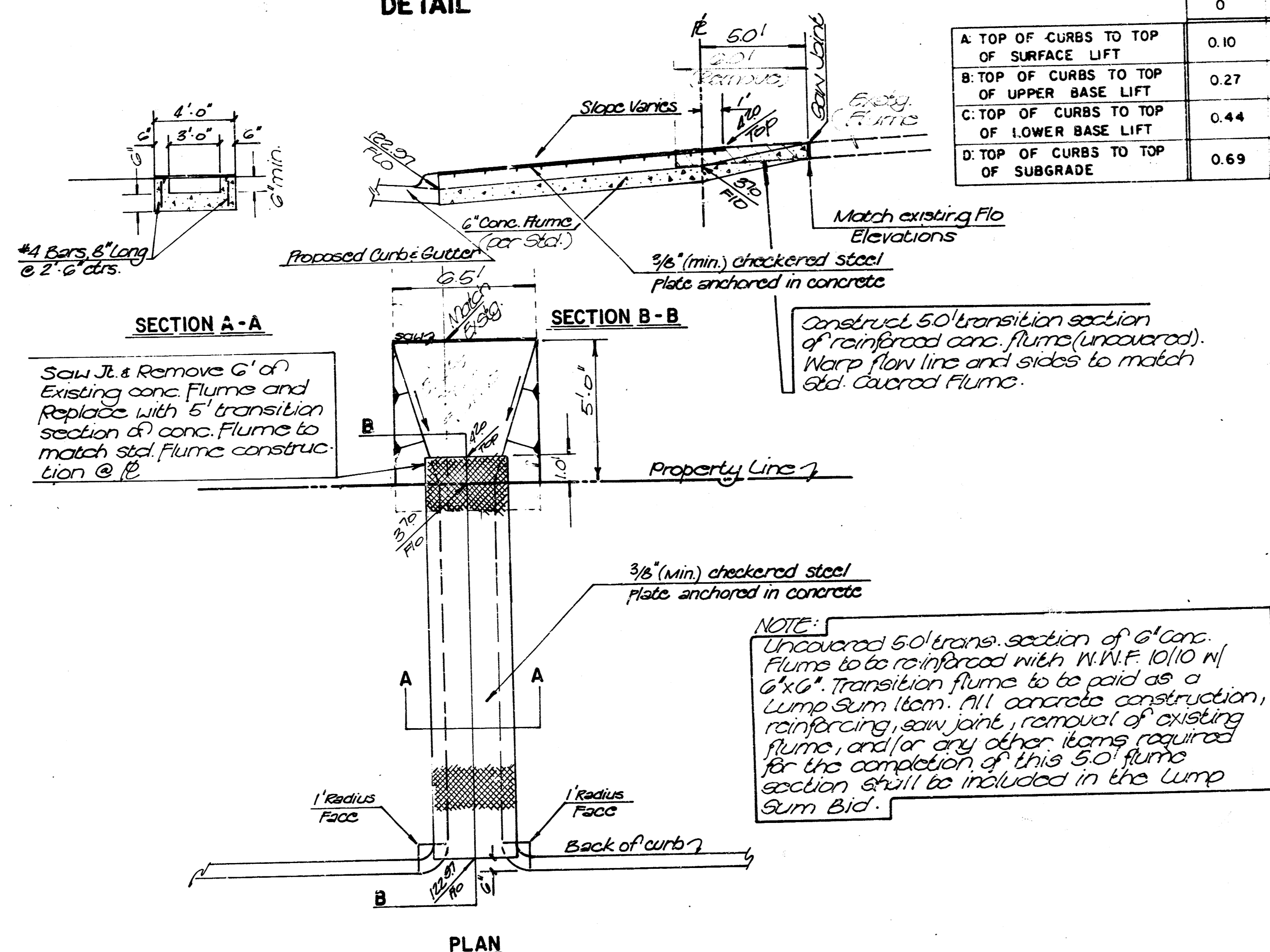
BAUGHMAN COMPANY, P.A.
SURVEYING & ENGINEERING
316-262-7271 • 315 ELLIS • WICHITA, KANSAS 67211

Prepared by	Checked by	Date	Scale
H. B. Wooten	Bob, Jr.	March 27	1"=20'

TYPICAL 3' PAVEMENT DETAILS

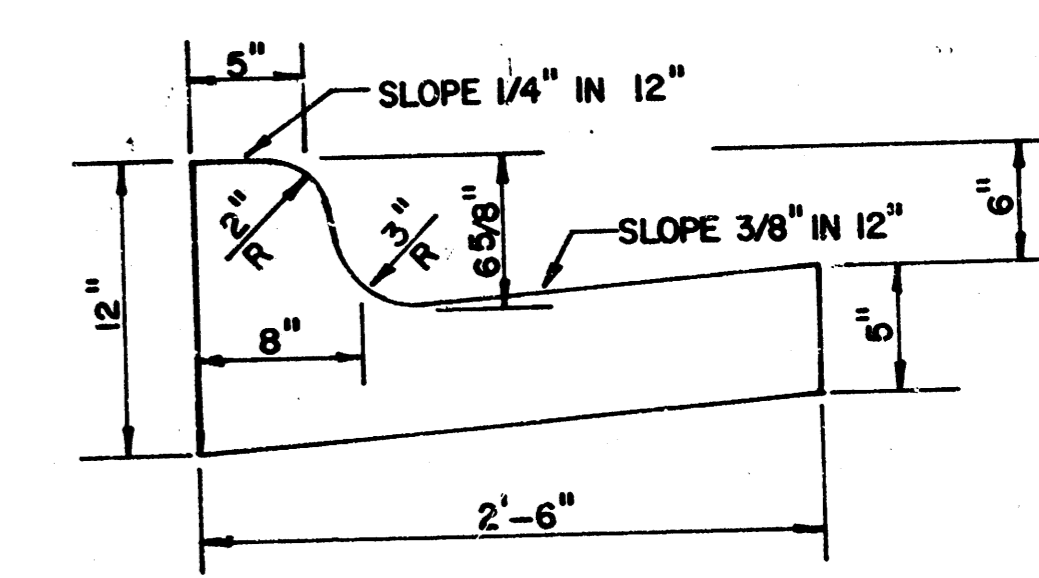


CONCRETE FLUME DETAIL

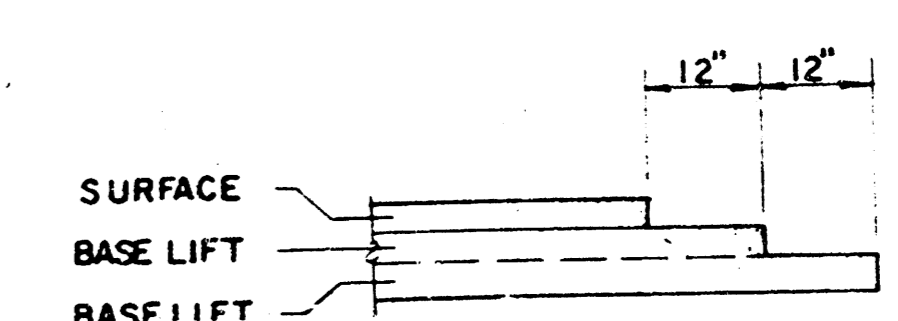


	DISTANCE FROM CENTERLINE (LT. & RT.)												
	0'	2'	4'	6'	7.5'	10'	12'	13'	15'	15.5'	15.67'	16.17'	
A. TOP OF CURBS TO TOP OF SURFACE LIFT	0.10	0.14	0.21	0.27	0.32	0.39	0.46	0.49	—	—	—	—	
B. TOP OF CURBS TO TOP OF UPPER BASE LIFT	0.27	0.31	0.38	0.44	0.49	0.56	0.63	0.66	—	—	—	—	
C. TOP OF CURBS TO TOP OF LOWER BASE LIFT	0.44	0.49	0.57	0.64	0.70	0.79	0.87	0.90	0.98	1.00	1.00	—	
D. TOP OF CURBS TO TOP OF SUBGRADE	0.69	0.73	0.80	0.87	0.93	1.01	1.08	1.12	1.19	1.21	1.21	1.23	

COMBINED CURB & GUTTER



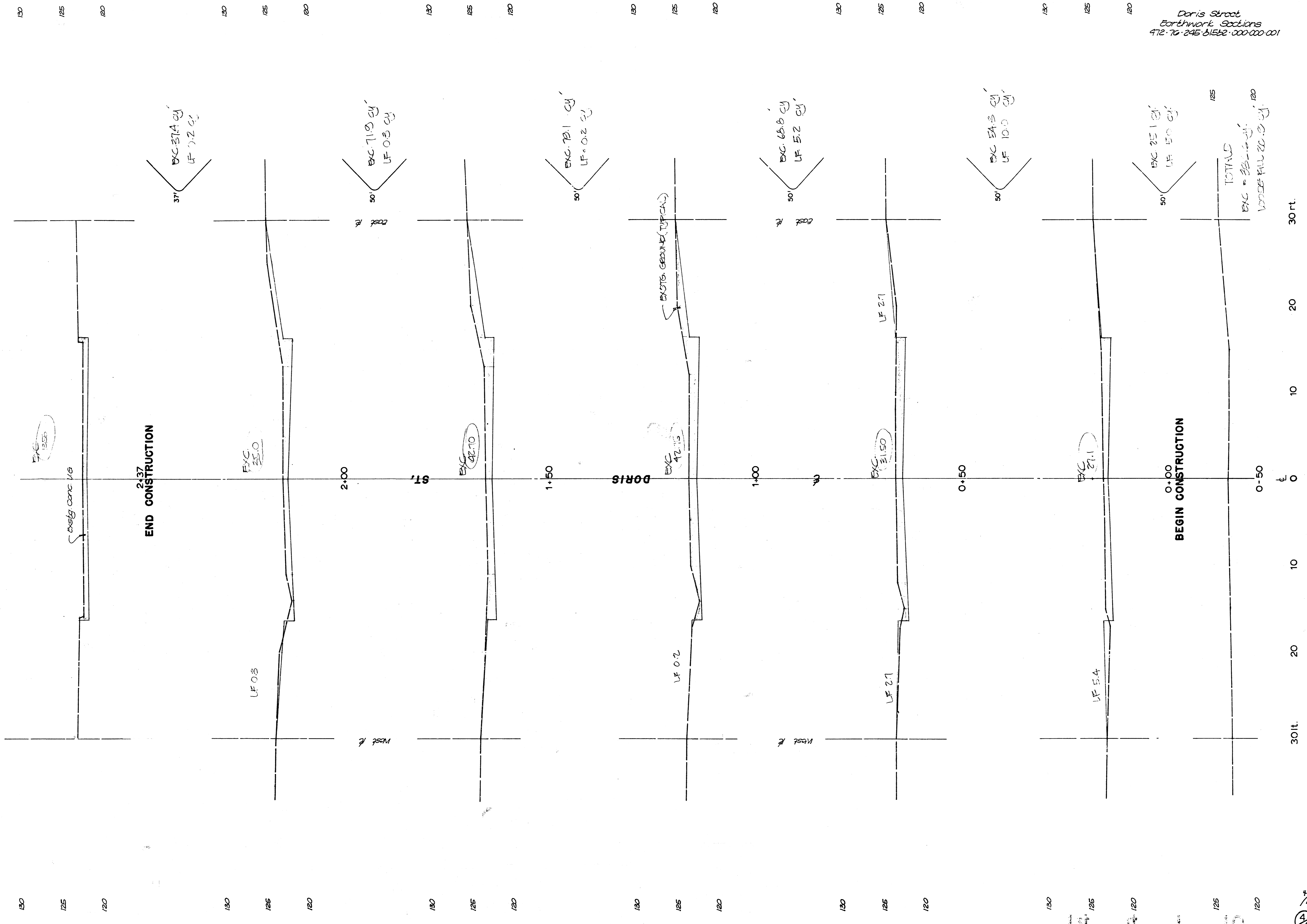
TRANSVERSE CONSTRUCTION JOINTS



GENERAL NOTES

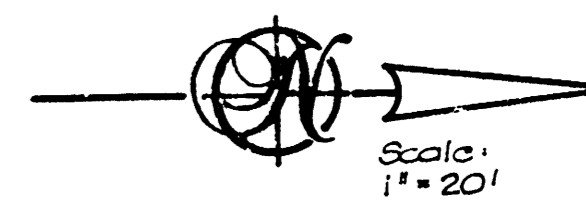
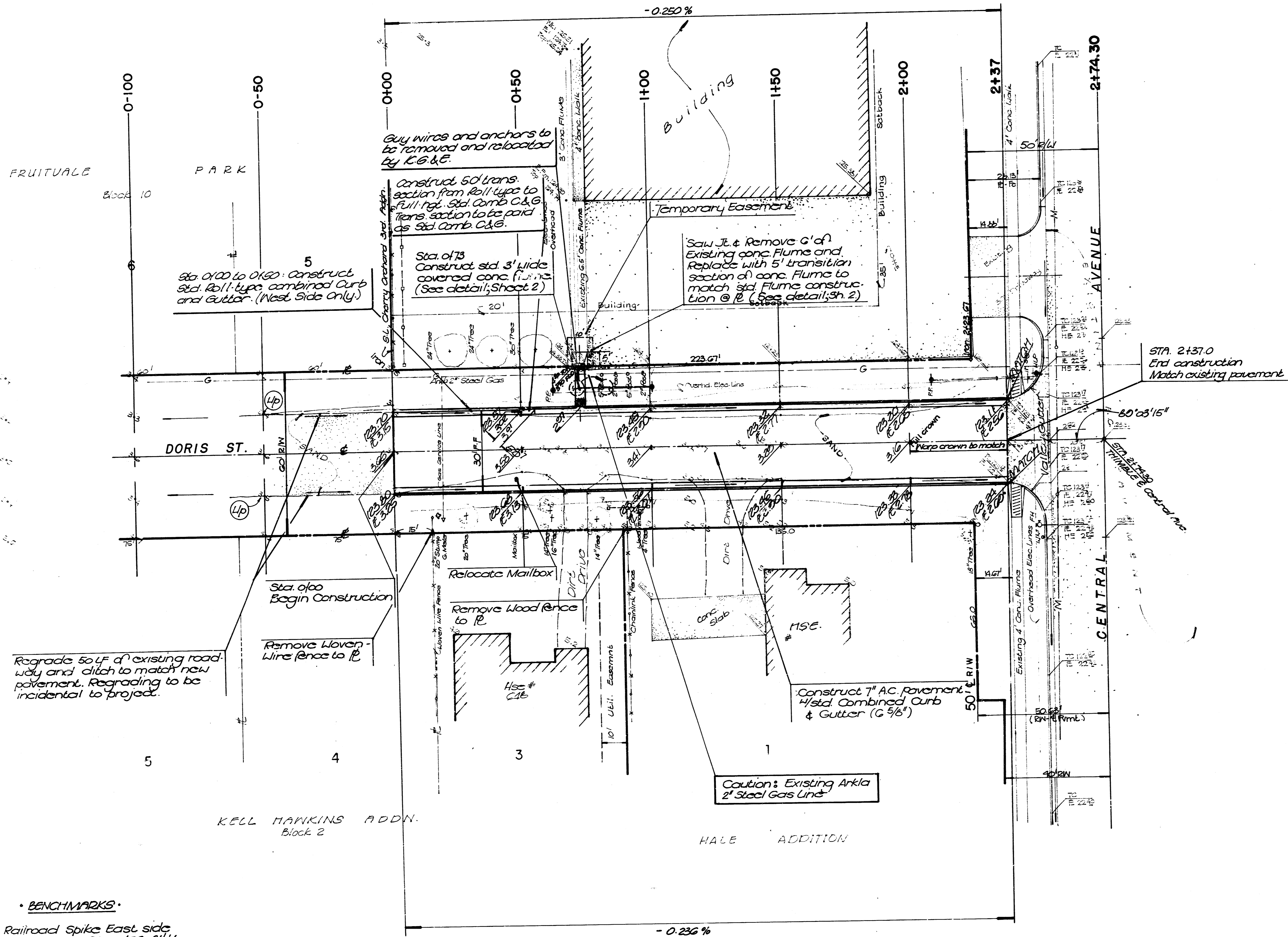
- 1) THE ASPHALTIC CONCRETE PAVEMENT BETWEEN THE COMBINED CURB AND GUTTER SHALL BE PAID AS SQUARE YARDS OF 7" ASPHALTIC CONCRETE (5" BITUMINOUS BASE).
- 2) THE BITUMINOUS BASE UNDER AND BEHIND THE COMBINED CURB AND GUTTER SHALL BE PAID AS SQUARE YARDS OF 2 1/2" BITUMINOUS BASE.
- 3) A TACK COAT OF EMULSIFIED ASPHALT (SC-1H OR CSS-1H) SHALL BE APPLIED AT AN APPROXIMATE RATE OF 0.05 GALLONS PER SQUARE YARD BETWEEN EACH LIFT OF ASPHALTIC MATERIAL.
- 4) BITUMINOUS BASE AND ASPHALTIC CONCRETE WEARING SURFACE SHALL BE PLACED WITH A LAYDOWN MACHINE HAVING AUTOMATIC CONTROLS FOR LINE AND GRADE.
- 5) CONSTRUCTION JOINTS IN EACH LIFT SHALL BE STAGGERED A MINIMUM DISTANCE OF ONE (1) FOOT FROM JOINTS IN PRECEDING LIFTS AND PLACED SO THAT A JOINT WILL BE CONSTRUCTED ON THE CENTERLINE OF THE TOP LIFT.
- 6) CONTRACTOR TO BID ONLY ONE SUBGRADE TREATMENT ALTERNATE WHEN ALTERNATES ARE PROVIDED IN THE PROPOSAL AND CONTRACT. THE ALTERNATE CHOSEN BY THE SUCCESSFUL BIDDER SHALL BE USED IN CONSTRUCTING THIS PROJECT.

7 INCH RESIDENTIAL ASPHALTIC CONCRETE PAVEMENT WITH 5 INCH BITUMINOUS BASE
 CITY OF WICHITA, KANSAS
 PROJECT NUMBER
 472-76-245-81582-000-000-001



CHERRY ORCHARD 3RD ADDITION

Lot 1



BENCHMARKS

1. Railroad Spike East side Power Pole @ Sta. of 22, 21' Lt. Elevation 124.92 City Datum
2. 1/4" Cut on Top Curb @ Sta. 2+45.6, 46' Lt. South end of East return of drive entrance to lot 1, Cherry Orchard 3rd Addition. Elevation 123.95 City Datum

EARTHWORK QUANTITIES

Excavation = 336.6 cy Compacted Fill = NONE cy
 +10% = 33.7
 Total = 370.3 cy
 Subgrade Manipulation = 852 SY

PROJ. NO. 472-76-245-81582-000-000-001
DORIS STREET
 From the S.L. Cherry Orchard 3rd Addition to the S.L. Central Avenue.

BAUGHMAN COMPANY, P.A.		3/4	
SURVEYING & ENGINEERING		3	
316 282-7271 • 315 ELLIS • WICHITA, KANSAS 67211		4	
DATE	BY	DATE	BY
March, 57	Scale Jr.	March, 57	1"-20'