

B.M. 114.759 City Std. Brass Rod in Conc. Post SW Corner Vine & Second Street.

Const 2'x5' Inlet. Install 60"-12" R.C.P. Flo. El. Out. 105.00

NOTE: Remove old street car ties only where necessary to obtain a minimum of 5" Conc. Base. Const 6" (3-Side) Conc. Base if Ties are removed.

B.M. 114.21 "T" in Tree, Top of Fire Hydr. N.E. Cor. Douglas & Millwood

Survey JFG BR 63
 JLA
 Checked

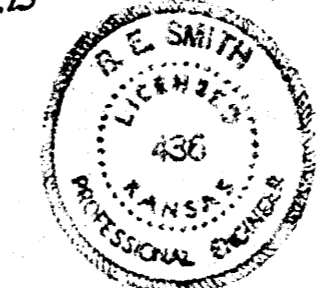
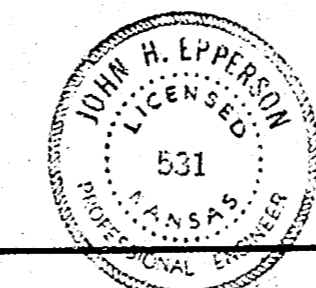
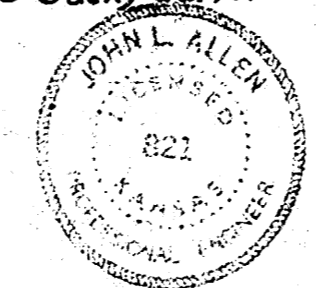
Scale: 1"=20'

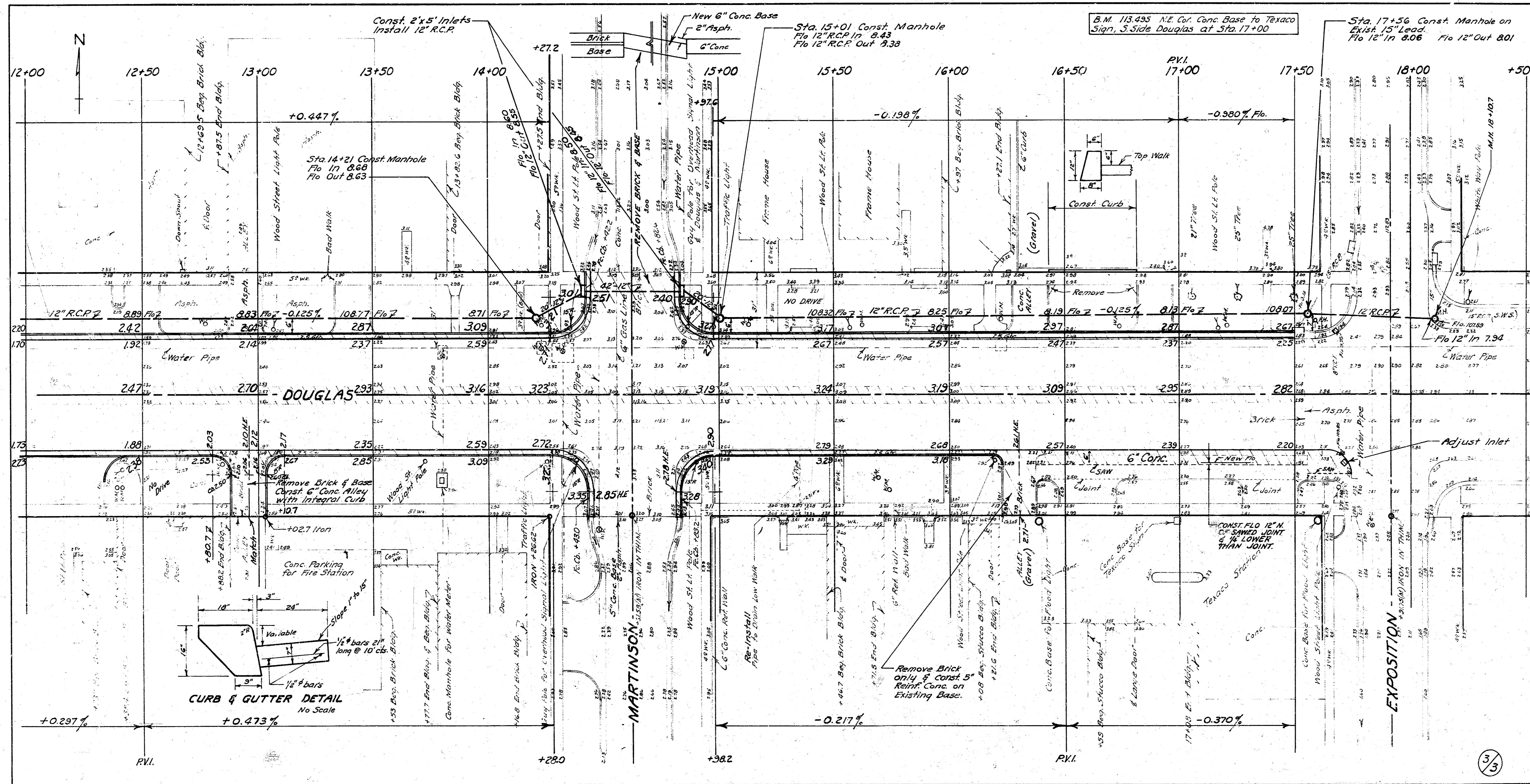
NOTE: Const. Top of Curb 2" below Elevations Shown.

COMB. CURB & GUTTER & BASE WIDENING DETAIL

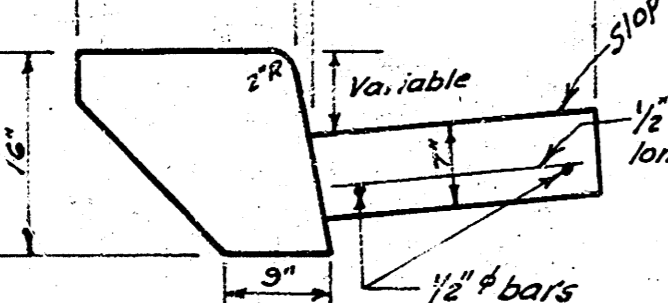
The unit of measure for Standard Comb. Curb and Gutter is Lin. Ft.
 The unit of measure for all base widening is Sq. Yds. of (3-Side) Conc.

DOUGLAS AVENUE
 W.L. MILLWOOD TO EL. EXPOSITION
 Comb. CURB & GUTTER & 2" ASPHALT
 Improve & Re-Improve
 CITY OF WICHITA KANSAS
 B.E. SMITH, CITY ENGINEER
 JUNE 1961 Project No. C11-12





CURB & GUTTER DETAIL
No Scale



EXPOSITION