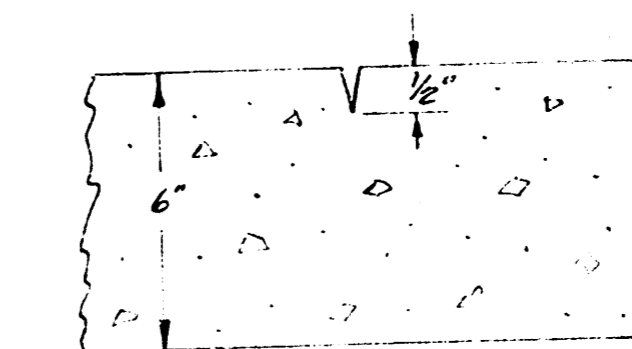
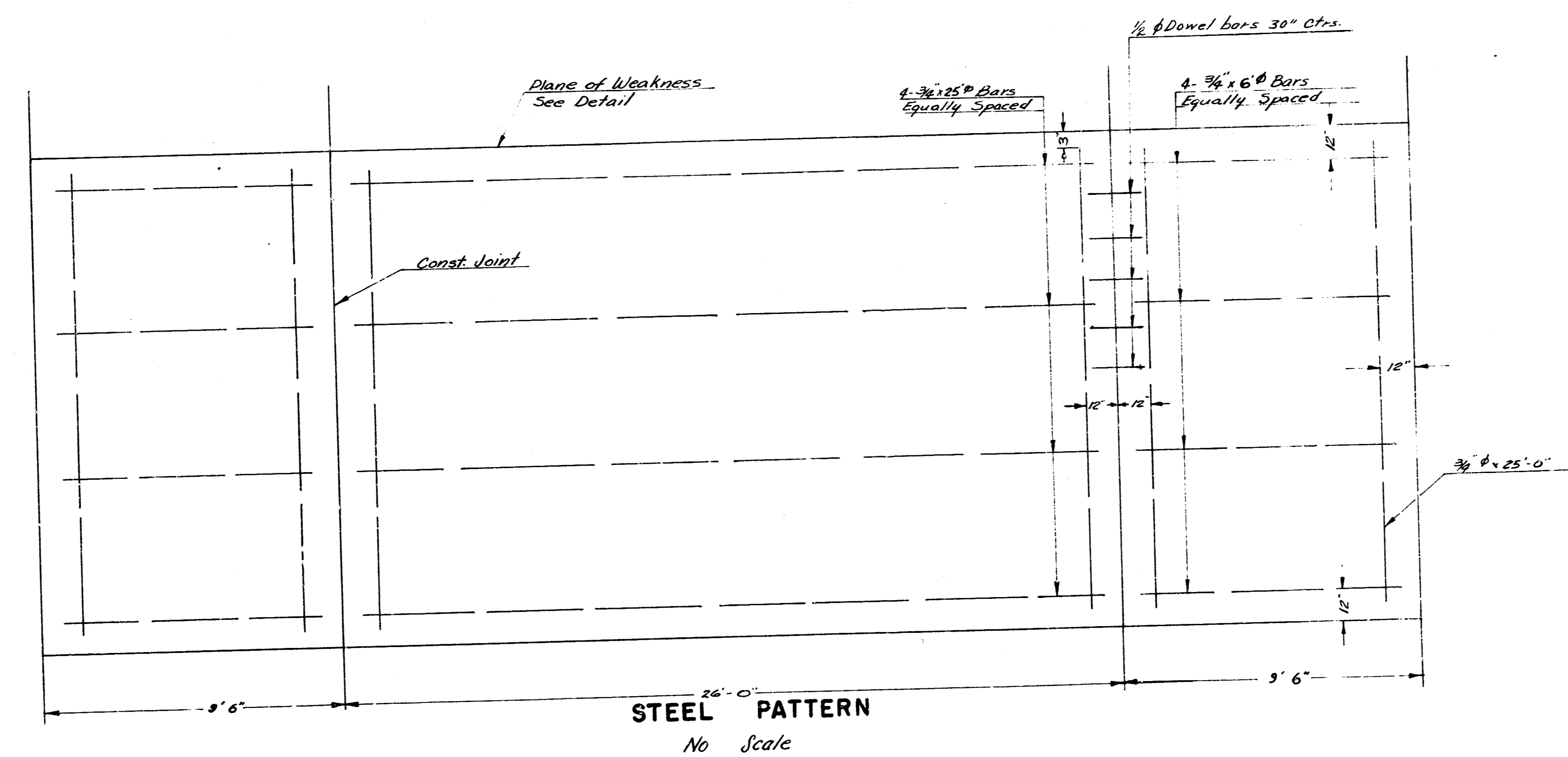
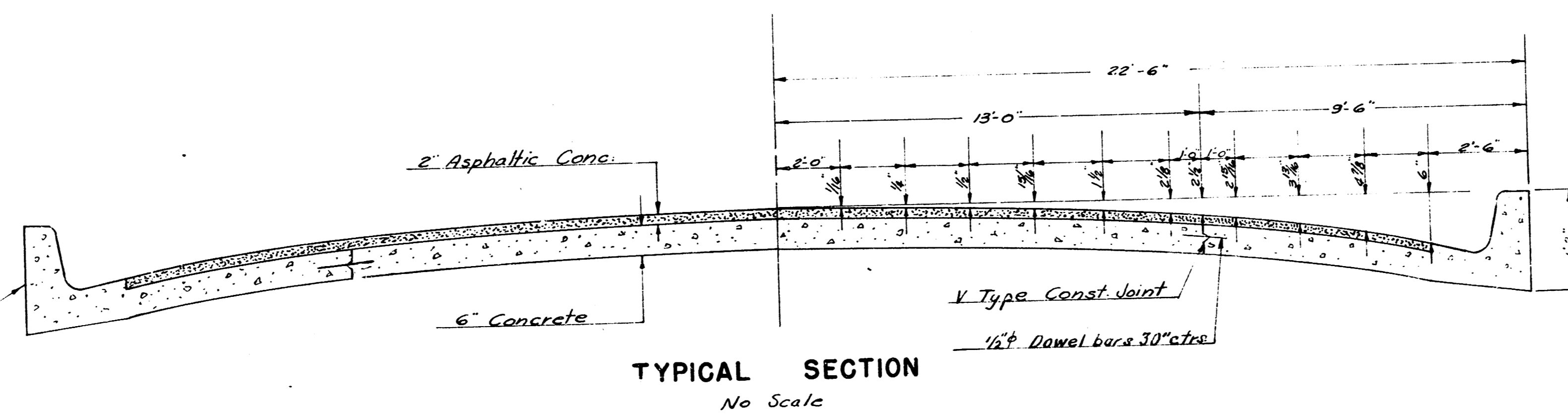


DOUGLAS AVE.
 Ⓢ EDGEMOOR TO E.L. COURTLEIGH

Note: Curb & Gutter Section to comply with Standard section of combined curb & gutter.

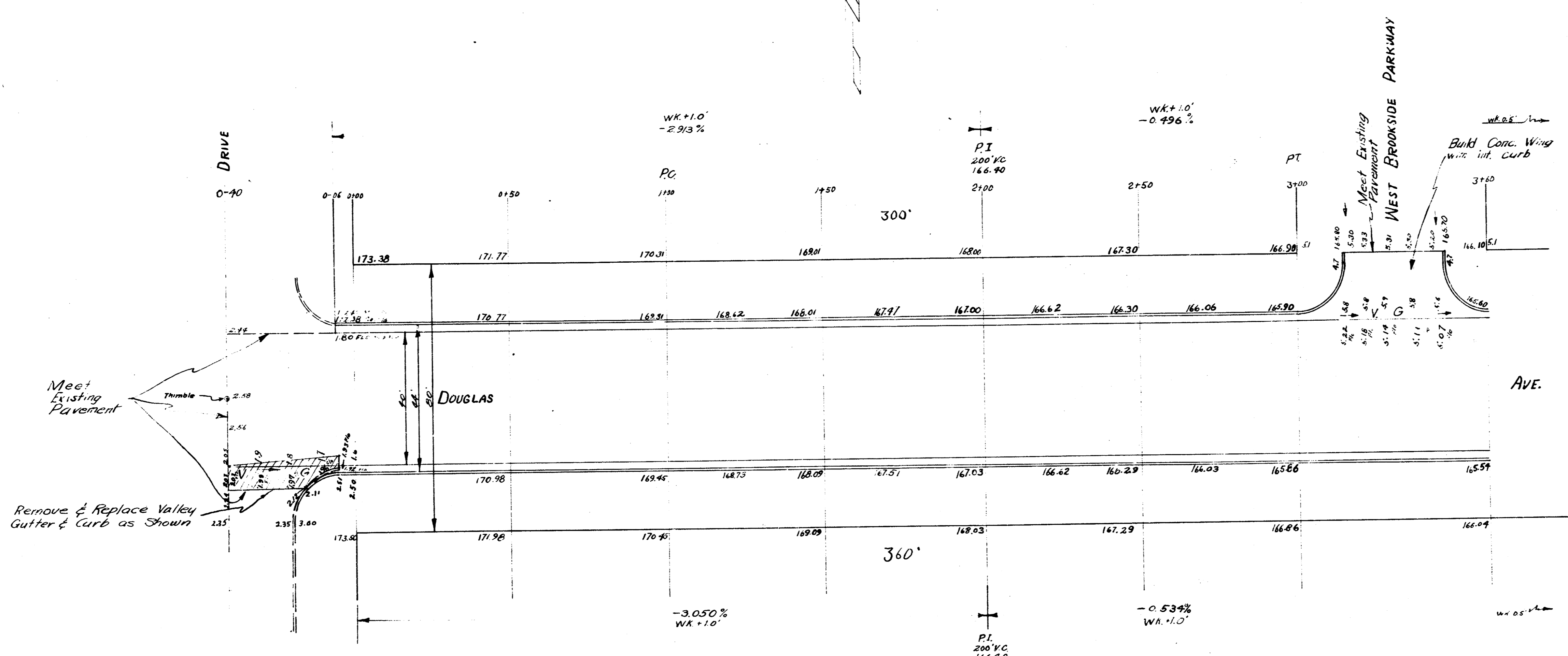


Plane of Weakness Detail
 Plane of Weakness to be cut with double-slope groove to depth as shown in a straight line from curb to curb in street.

1
13

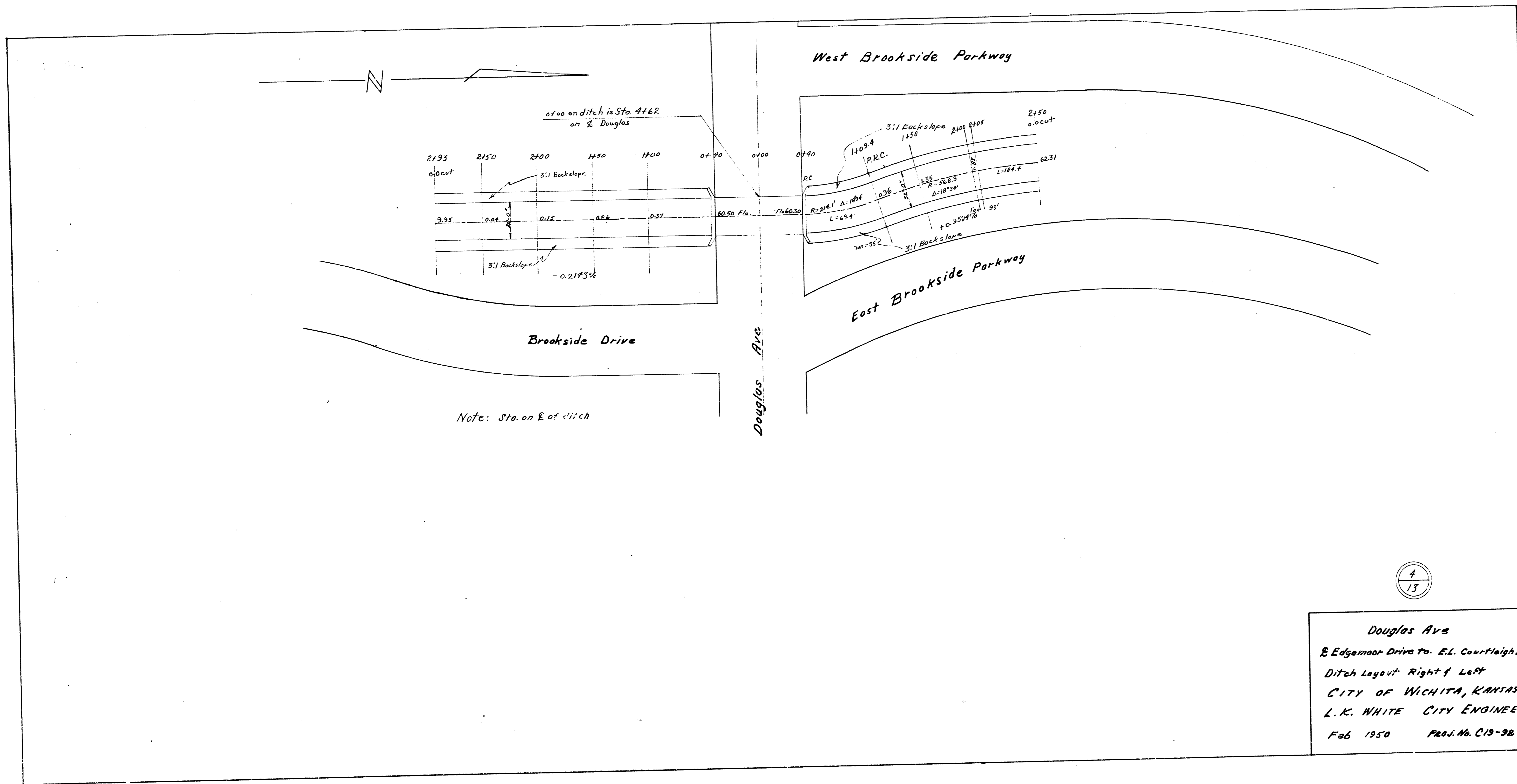
DOUGLAS AVE.
 Ⓢ EDGEMOOR DR. TO E.L. COURTLEIGH DR.
 40'-2"-44" A.C.
 CITY OF WICHITA, KANSAS
 L.K. WHITE CITY ENGINEER
 Feb. 1950 PROJECT No. C19-32

B.M. 165.84 N.W. Cor. N. Hub. guard of Conc. Box Clvt. of Douglas and Brookside Parkway.



2/13

DOUGLAS AVE.
 EDGEMOOR DR. TO E.L. COURTLEIGH DR.
 40'-2'-44" A.C.
 CITY OF WICHITA, KANSAS
 L.K. WHITE CITY ENGINEER
 AUGUST 1949 PROJ. NO. C19-32



4
13

Douglas Ave
 E Edgemoor Drive to E.L. Courtleigh Dr.
 Ditch Layout Right & Left
 CITY OF WICHITA, KANSAS
 L.K. WHITE CITY ENGINEER
 Feb 1950 Proj. No. C13-32

BOX CULVERT LAYOUT
EAST DOUGLAS & BROOKSIDE PARKWAY

West Brookside Parkway

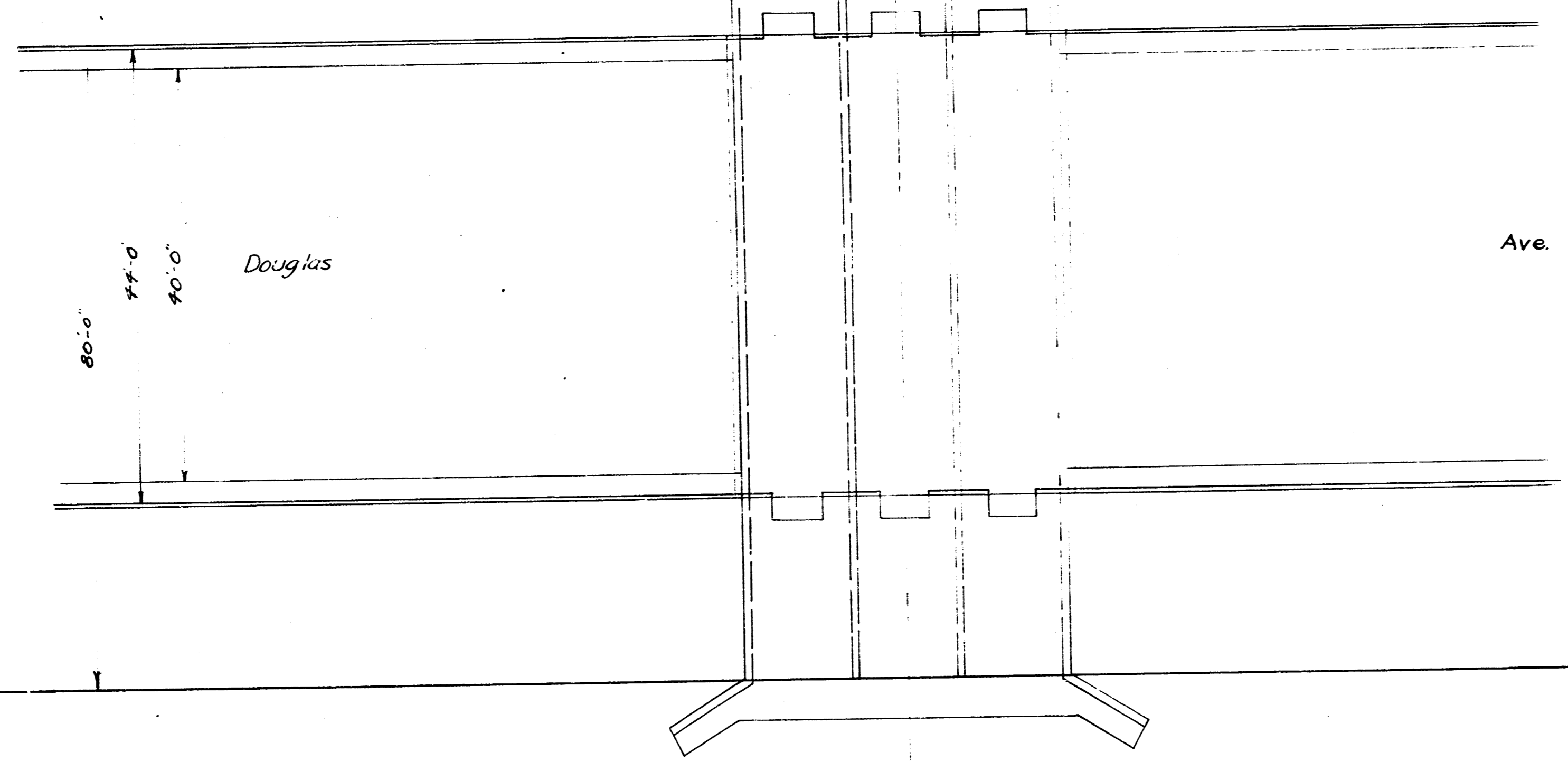
Sta 3+60



Culvert Sta. 4+62

Sta 5+32

East Brookside Parkway



Ave.

80'-0"

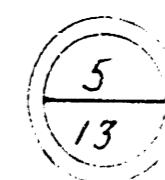
40'-0"

Douglas

Scale 1"=10'

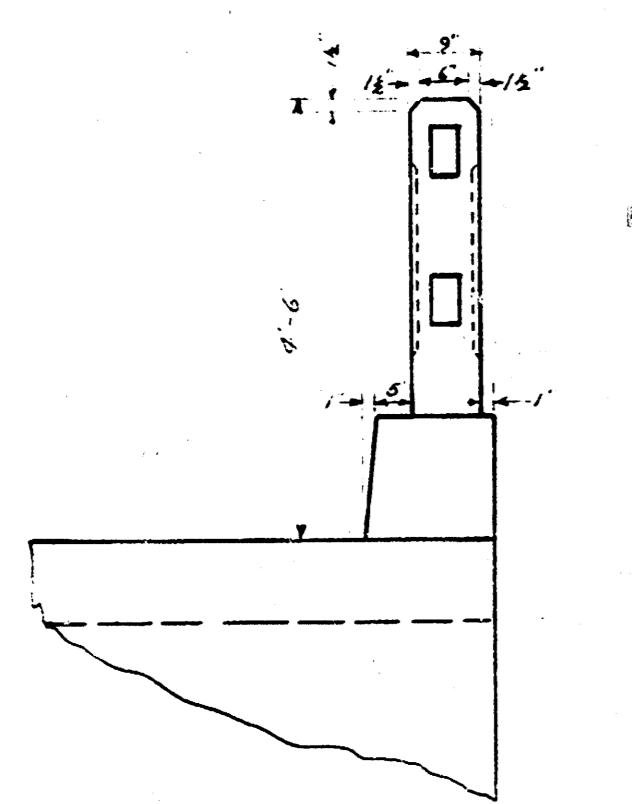
Sta 5+38.9

Brookside Drive

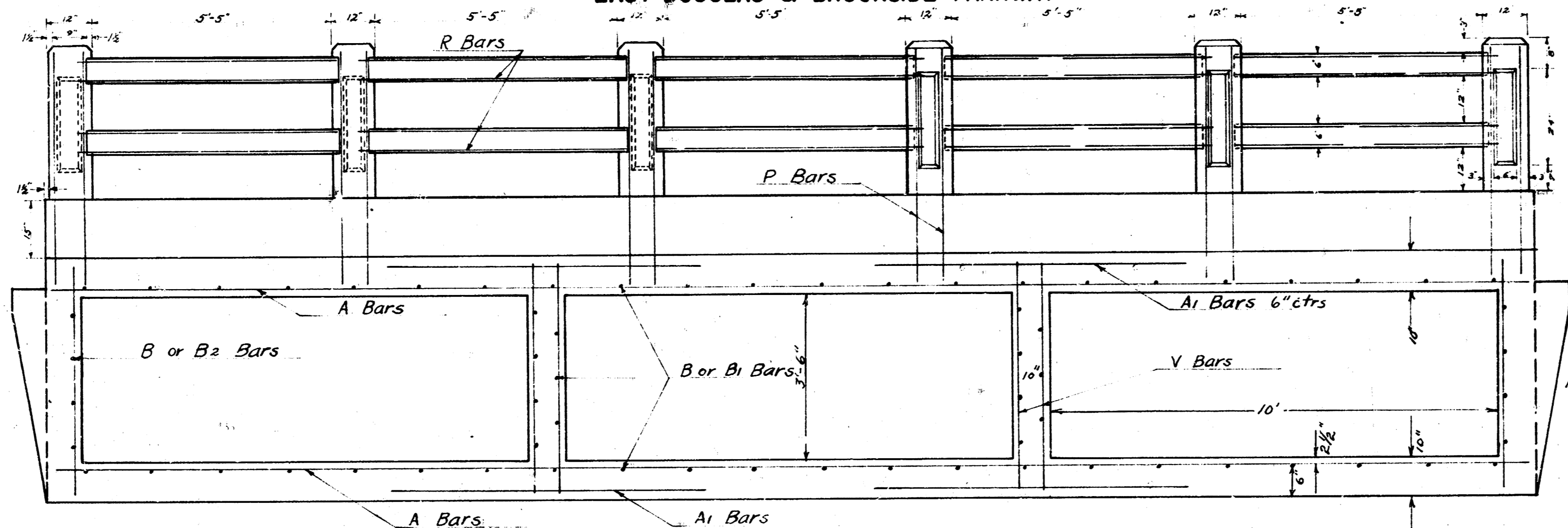


DOUGLAS AVE
EDGEMOOR DR to EL. COWLEIGH DR
40'-2'-44" A.C.
CITY OF WICHITA, KANSAS
L.K. WHITE CITY ENGINEER
February 1950 PROJECT No. C. 19-32

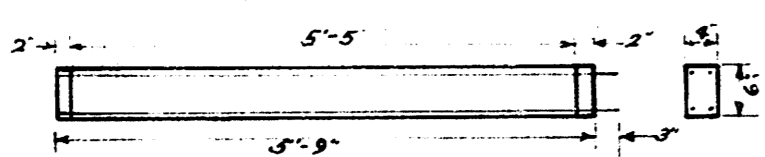
BOX CULVERT DETAIL
EAST DOUGLAS & BROOKSIDE PARKWAY



DETAIL OF HANDRAIL POST
Scale 1" = 2'-0"

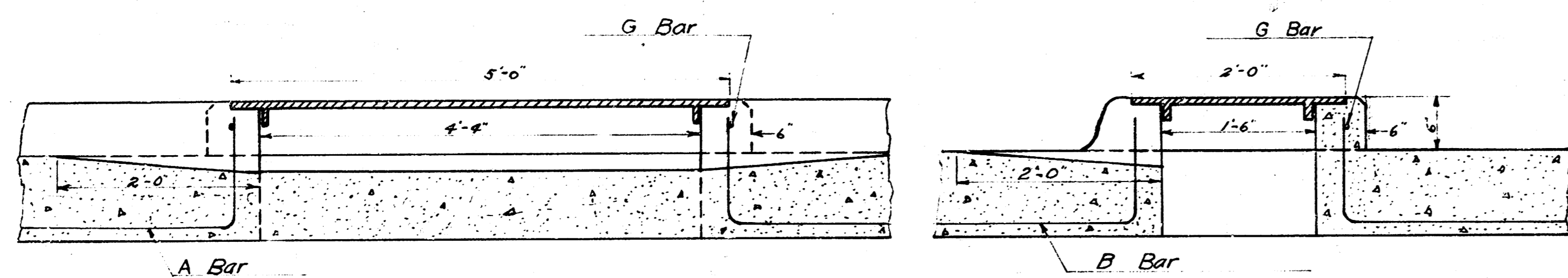


GROSS SECTION OF BOX
Scale 1" = 2'-0"

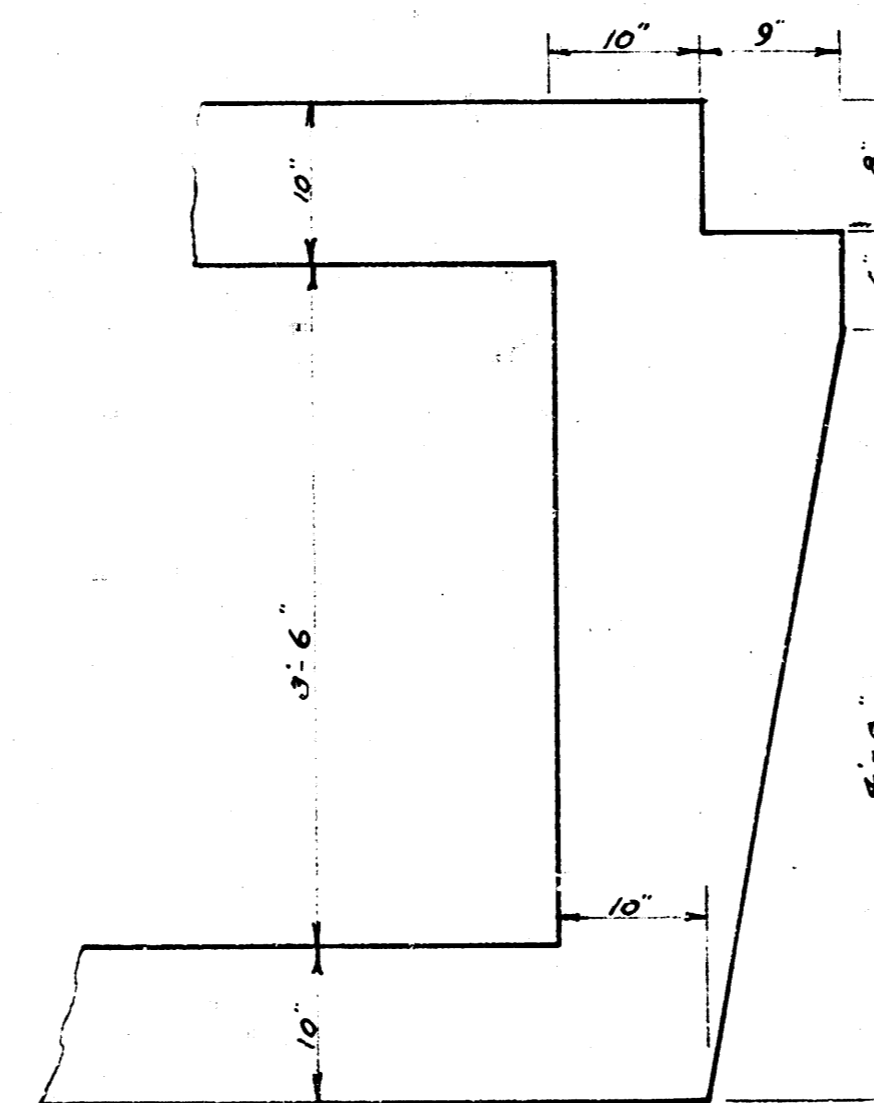


PRECAST RAIL
Scale 1" = 2'-0"

NOTE:
1. One end of each precast rail to be wrapped with tar paper to allow for expansion.
2. Cut A & B Bars in opening of catch basin and bend as shown below.
3. Bevel all exposed edges using 1" triangular mauling.
4. Class D concrete to be used in Posts & Rails.



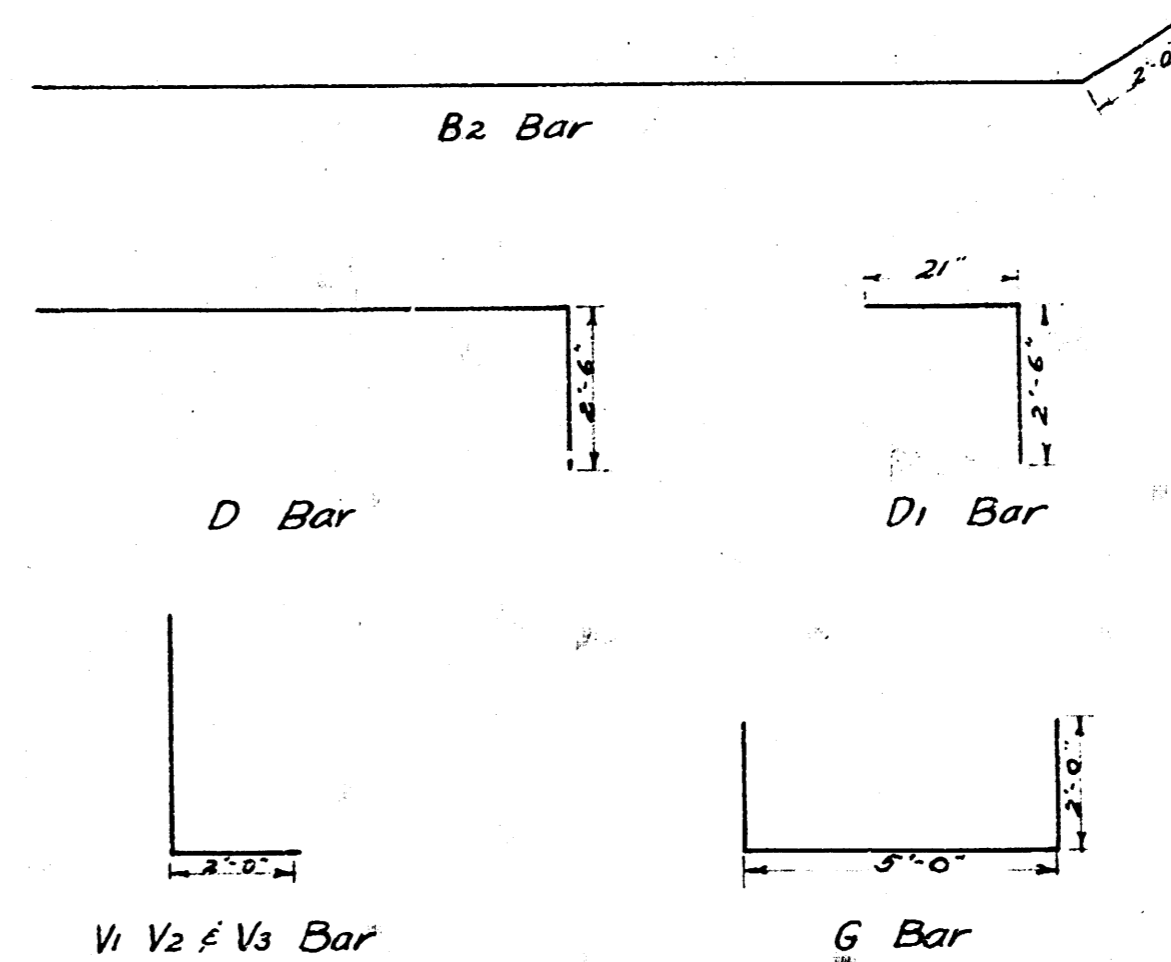
DETAIL OF CATCH BASIN
Scale 1" = 1'-0"



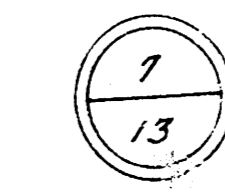
DETAIL OF PAVEMENT SHELF
Scale 1" = 1'-0"

Bar	Number	Size	Length	Type
A	308	3/4"	33'-0"	
A1	416	3/8"	7'-0"	
B	132	3/8"	25'-0"	
B1	58	3/8"	10'-9"	
B2	16	3/8"	8'-6"	
C	6	3/8"	33'-0"	
D	44	3/8"	8'-9"	
D1	20	3/8"	4'-9"	
E	6	3/8"	33'-0"	
E1	12	3/8"	6'-3"	
H	12	3/8"	10'-0"	
H1	4	3/8"	2'-0"	
H2	4	3/8"	4'-6"	
V	324	3/8"	1'-8"	
V1	12	3/8"	6'-0"	L
V2	8	3/8"	5'-6"	L
V3	8	3/8"	4'-6"	L
F	84	3/8"	1'-0"	
G	6	3/8"	5'-0"	L
K	2	3/8"	33'-0"	
P	40	3/8"	4'-9"	
R	80	3/8"	6'-0"	

Reinf. Steel - Lbs.	32,530
Class A Corc. - Cu Yds	247
2' x 5' Catch Basin Covers	6
Fill Sand - Tons	7
Class P Corc. (9 sacks per cu yd) Cu Yds	17
General Exca	550 cu yds
Hand Exca	30
1/2" Wide Walk	2,670 ft
Lip of Int. cb	37



BENDING DIAGRAMS
Scale 1" = 3'-0"



DOUGLAS AVE
Edgemoor Dr to Courtleigh Dr