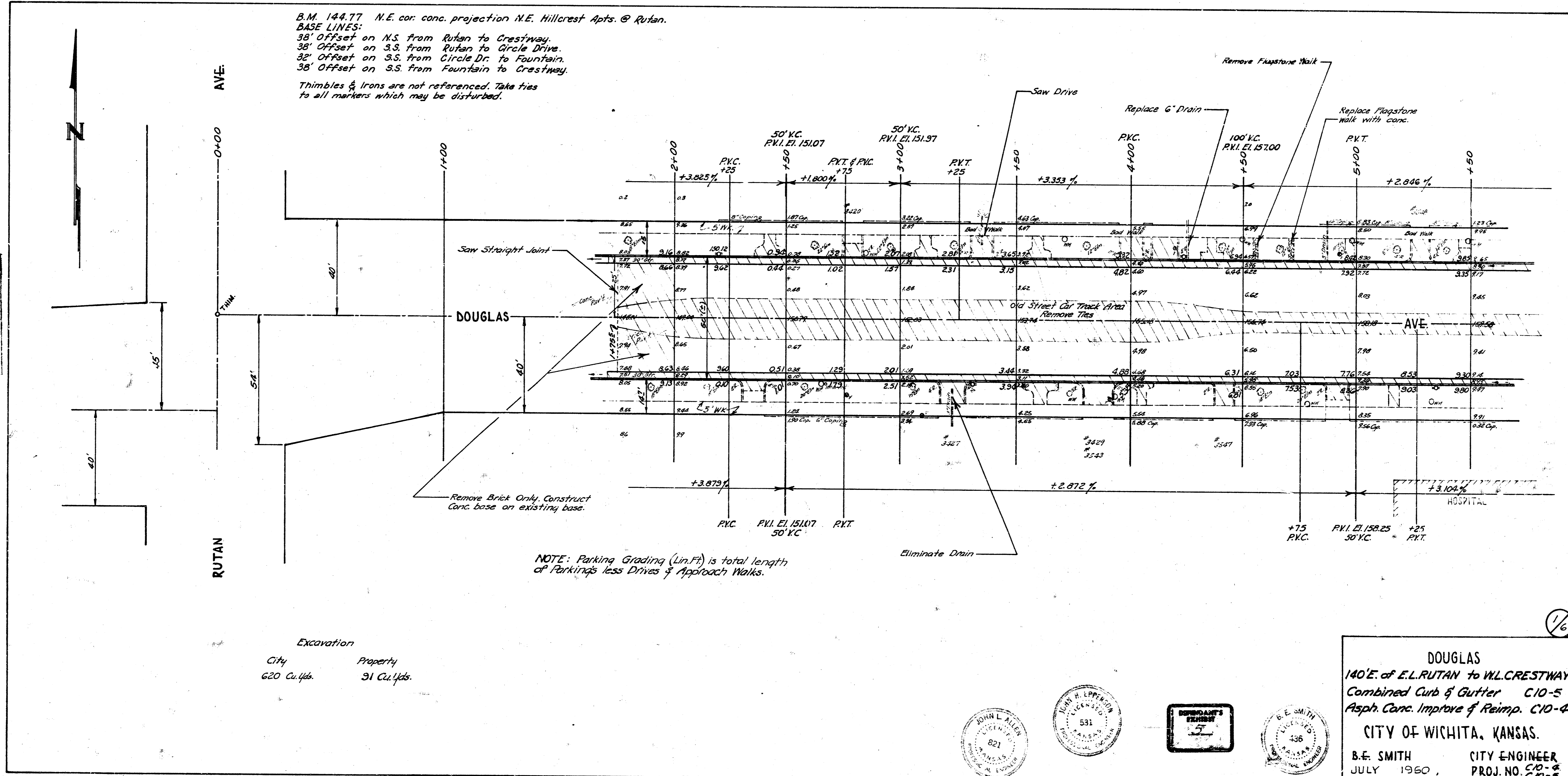


MILLS
D.W.H.
1960

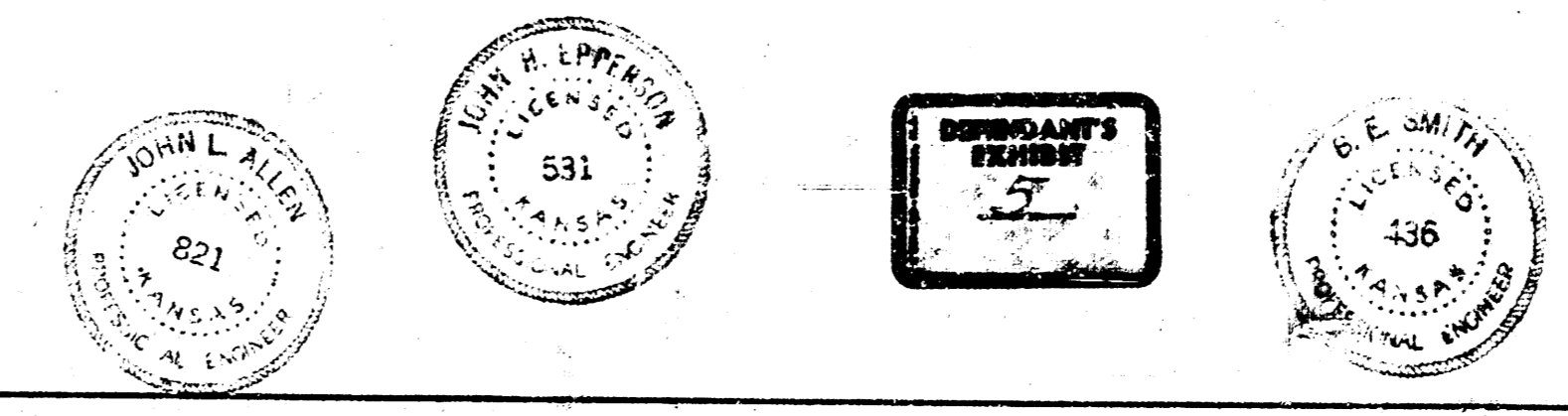


B.M. 144.77 N.E. cor. conc. projection N.E. Hillcrest Apts. @ Rutan.
 BASE LINES:
 38' Offset on N.S. from Rutan to Crestway.
 38' Offset on S.S. from Rutan to Circle Drive.
 32' Offset on S.S. from Circle Dr. to Fountain.
 38' Offset on S.S. from Fountain to Crestway.
 Thimbles & Irons are not referenced. Take ties to all markers which may be disturbed.

NOTE: Parking Grading (Lin.Ft) is total length of Parkings less Drives & Approach Walks.

Excavation
 City 620 Cu.Yds. Property 31 Cu.Yds.

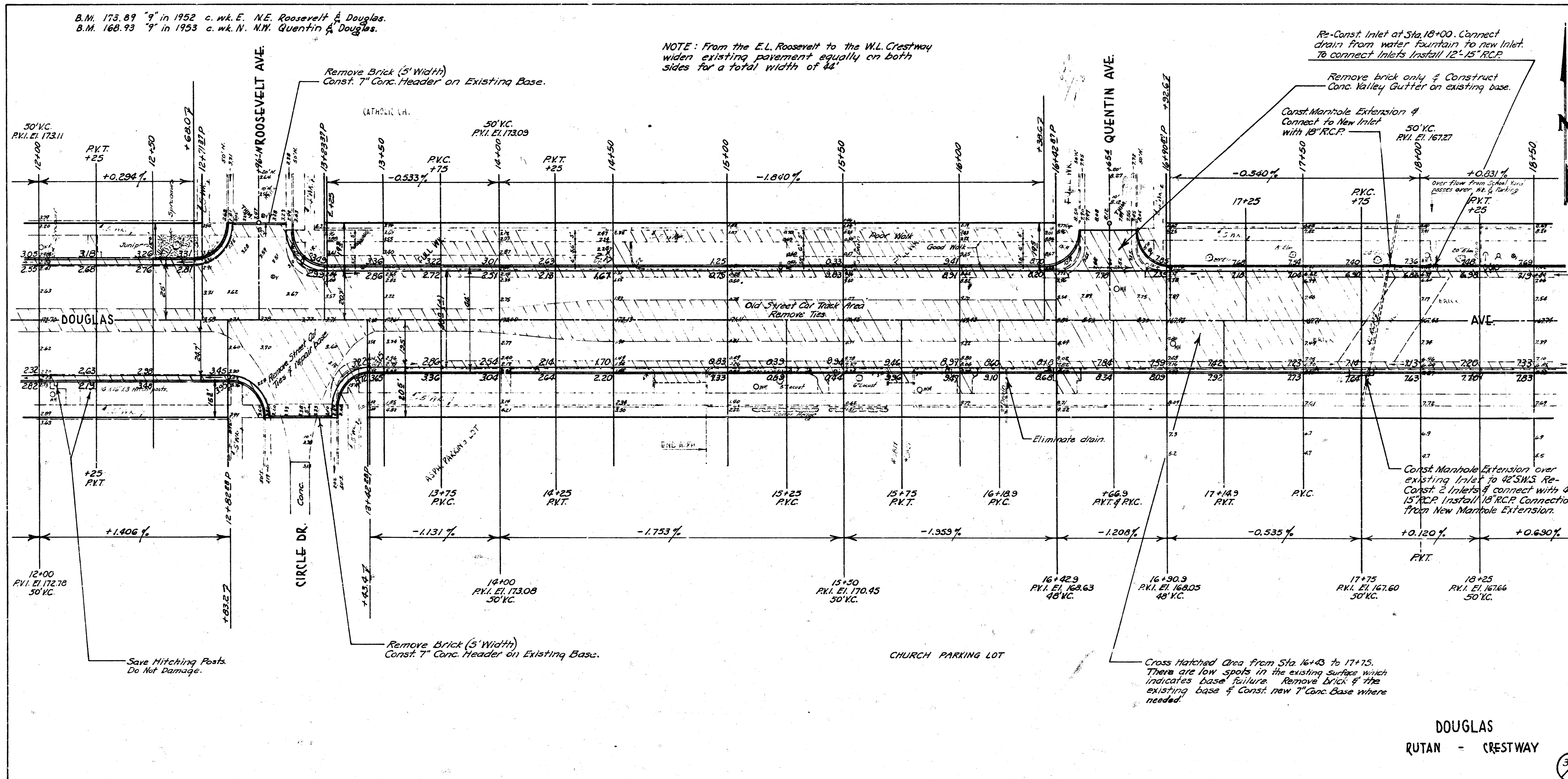
DOUGLAS
 140'E. of E.L. RUTAN to W.L. CRESTWAY
 Combined Curb & Gutter C10-5
 Asph. Conc. Improve & Reimp. C10-4
 CITY OF WICHITA, KANSAS.
 B.E. SMITH CITY ENGINEER
 JULY 1960, PROJ. NO. C10-4
 C10-5

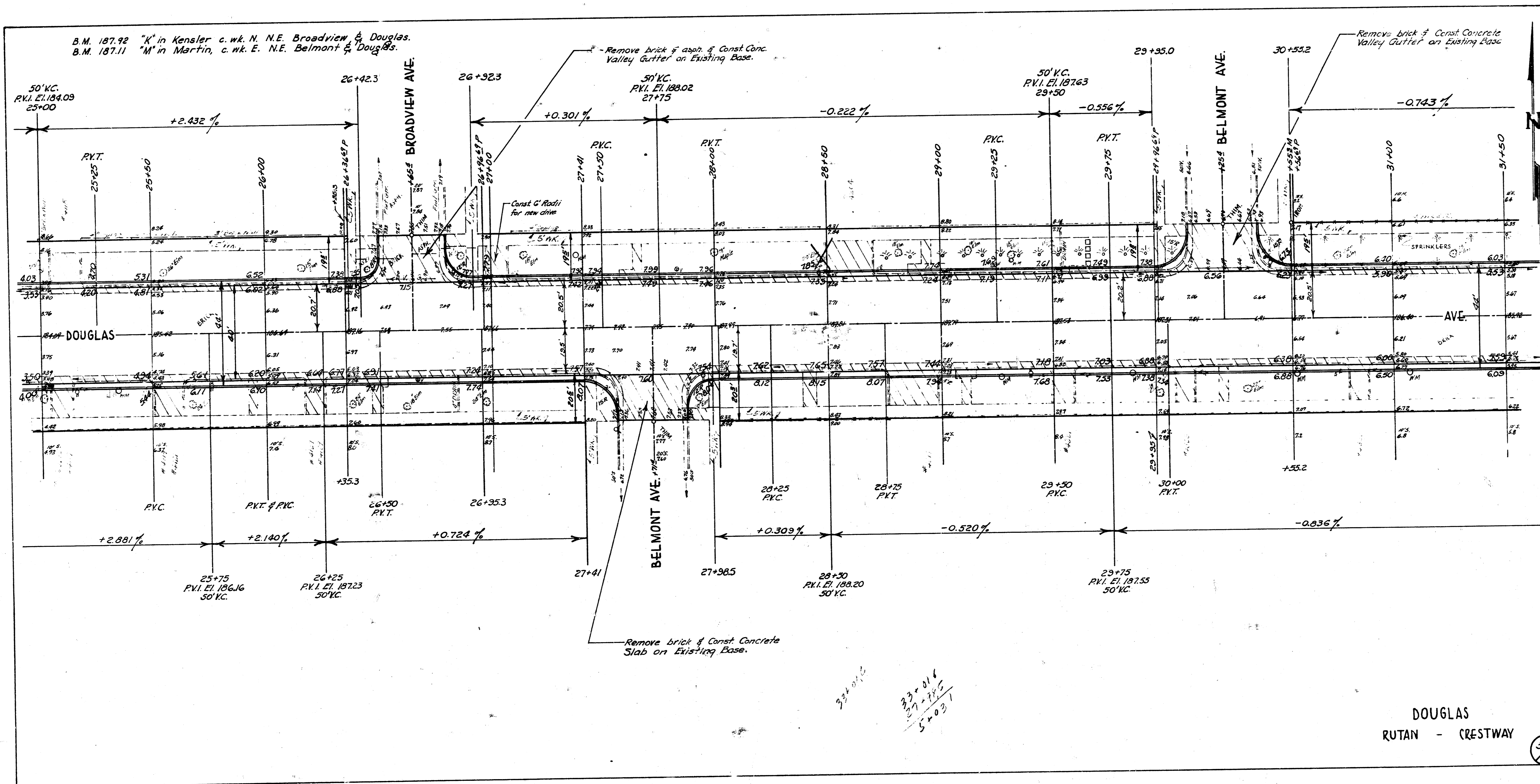


1/6

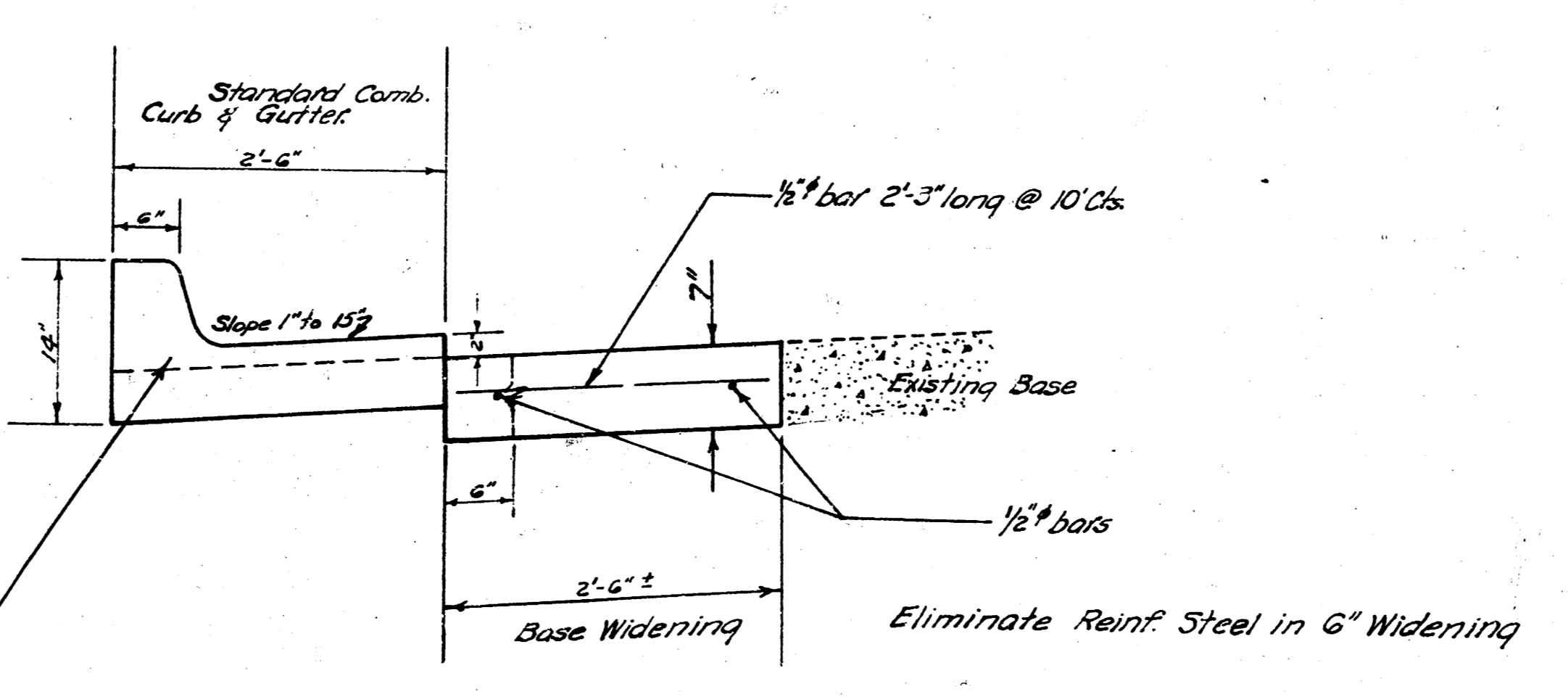
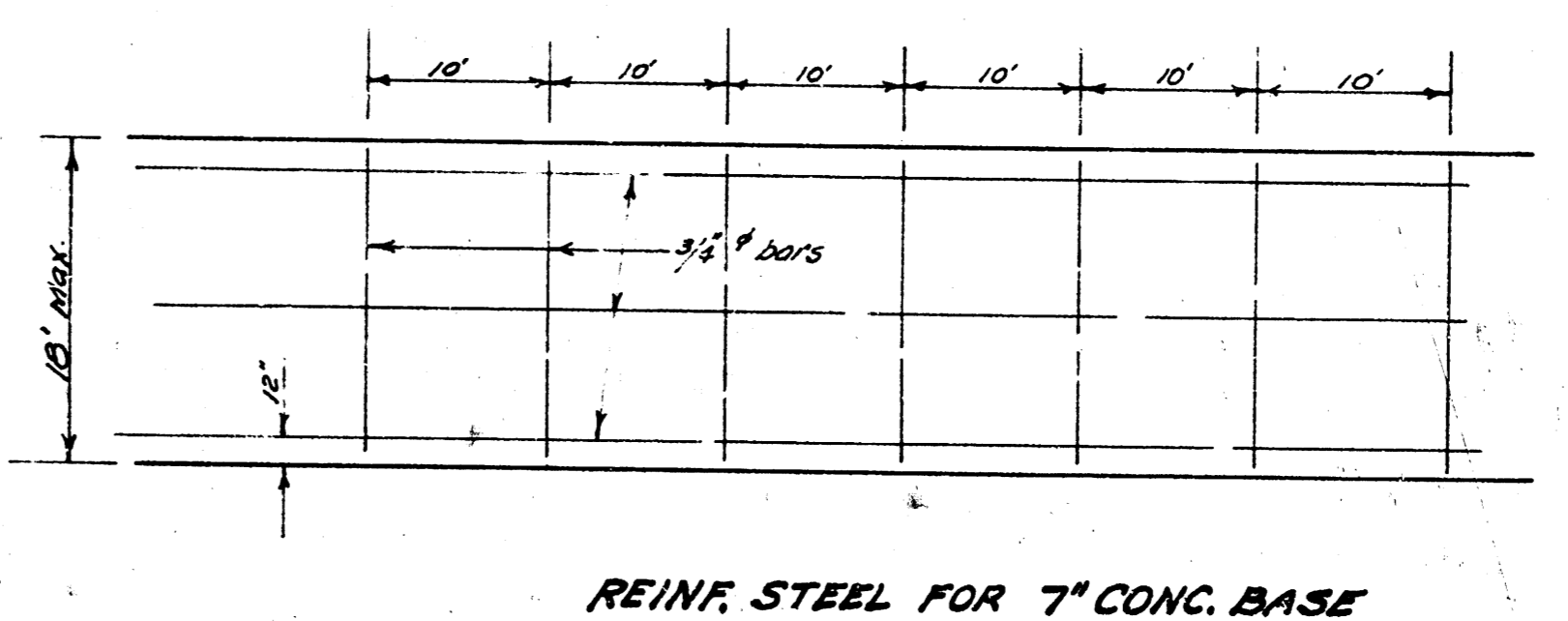
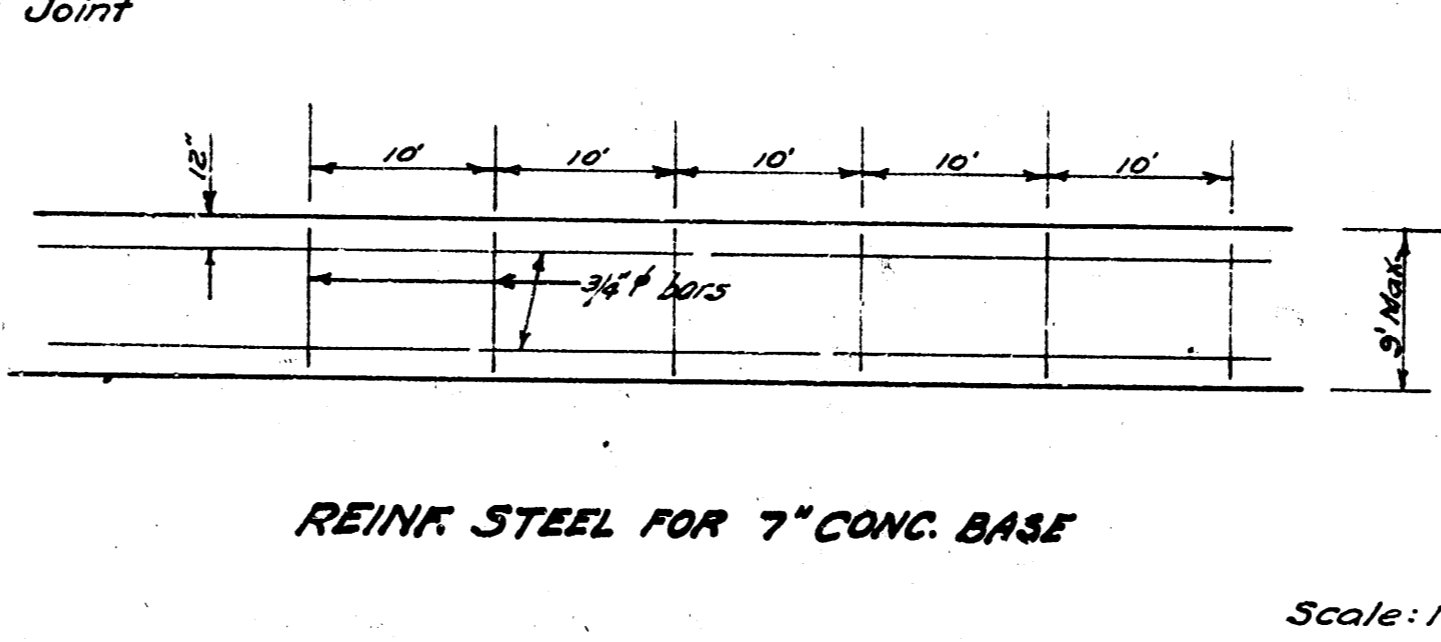
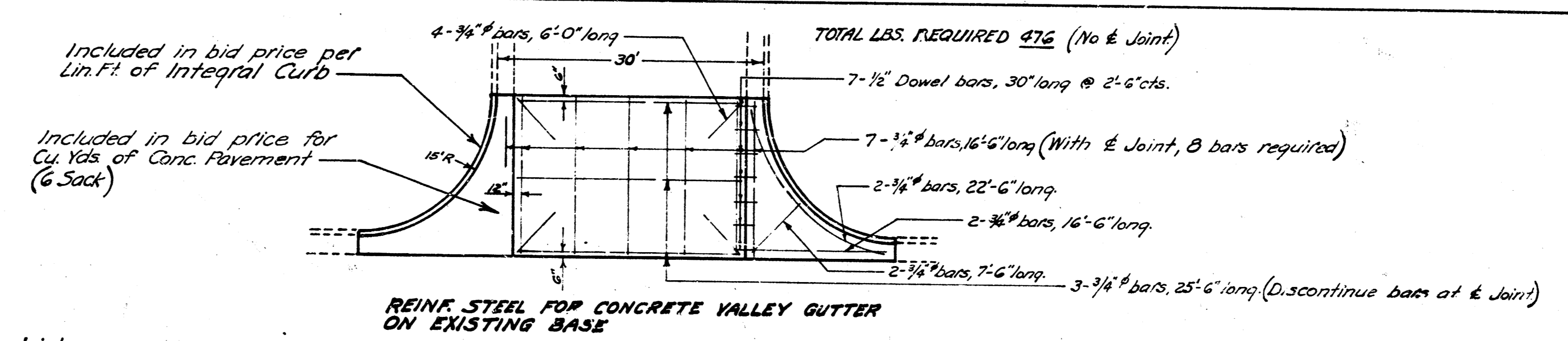
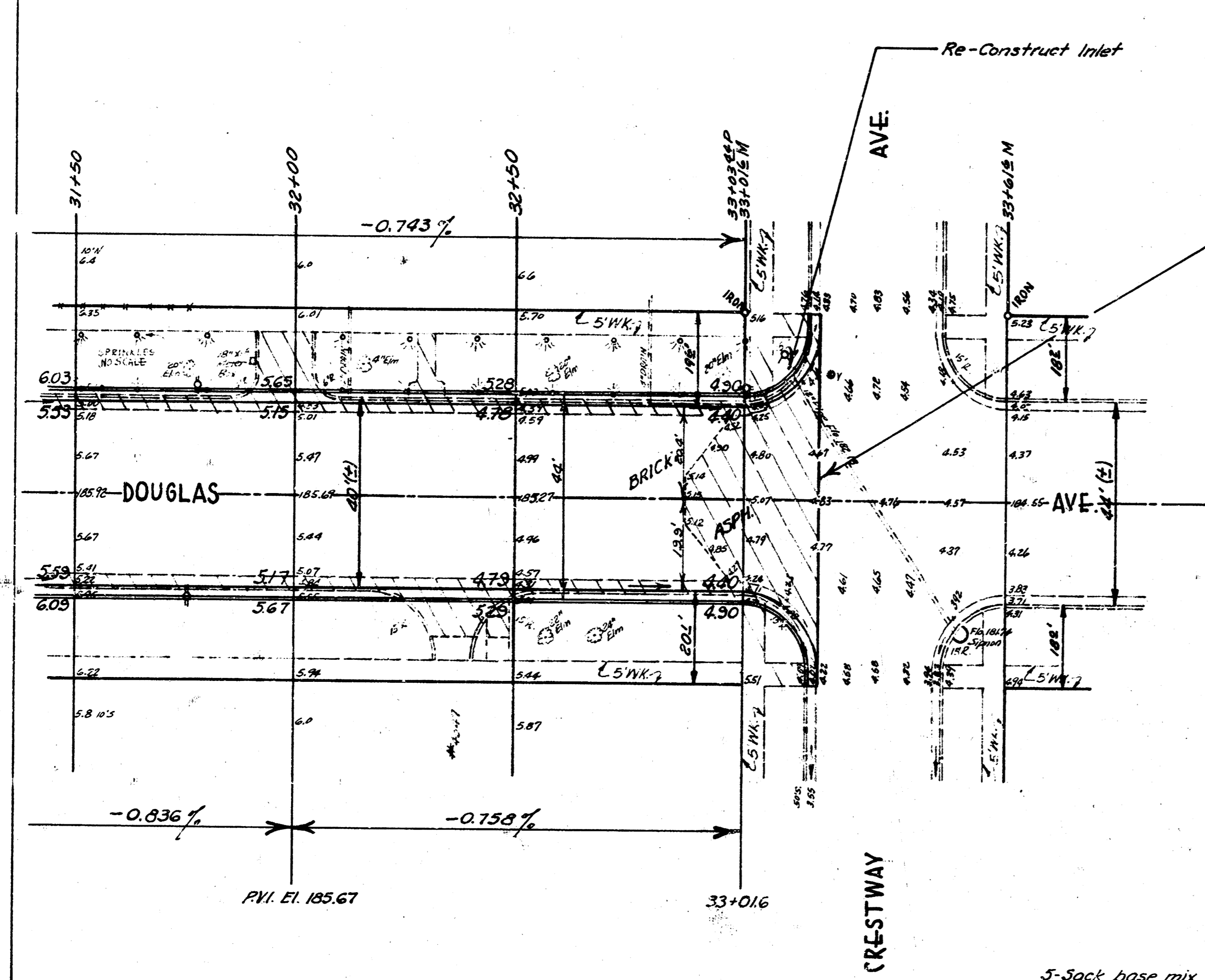
B.M. 173.89 "9" in 1952 c. wk. E. N.E. Roosevelt & Douglas.
 B.M. 168.93 "9" in 1953 c. wk. N. N.M. Quentin & Douglas.

NOTE: From the E.L. Roosevelt to the W.L. Crestway
 widen existing pavement equally on both
 sides for a total width of 44.





B.M. 185.23 "G" in Globe, c. wt. N.E. Crestway & Douglas.



5-Sack base mix finished with 8-Sack sand mix.

The unit of measure for Standard Comb. Curb & Gutter is Lin. Ft.
The unit of measure for all base widening is Cu. Yds. of Conc. (5 Sack)

DOUGLAS
RUTAN - CRESTWAY

