

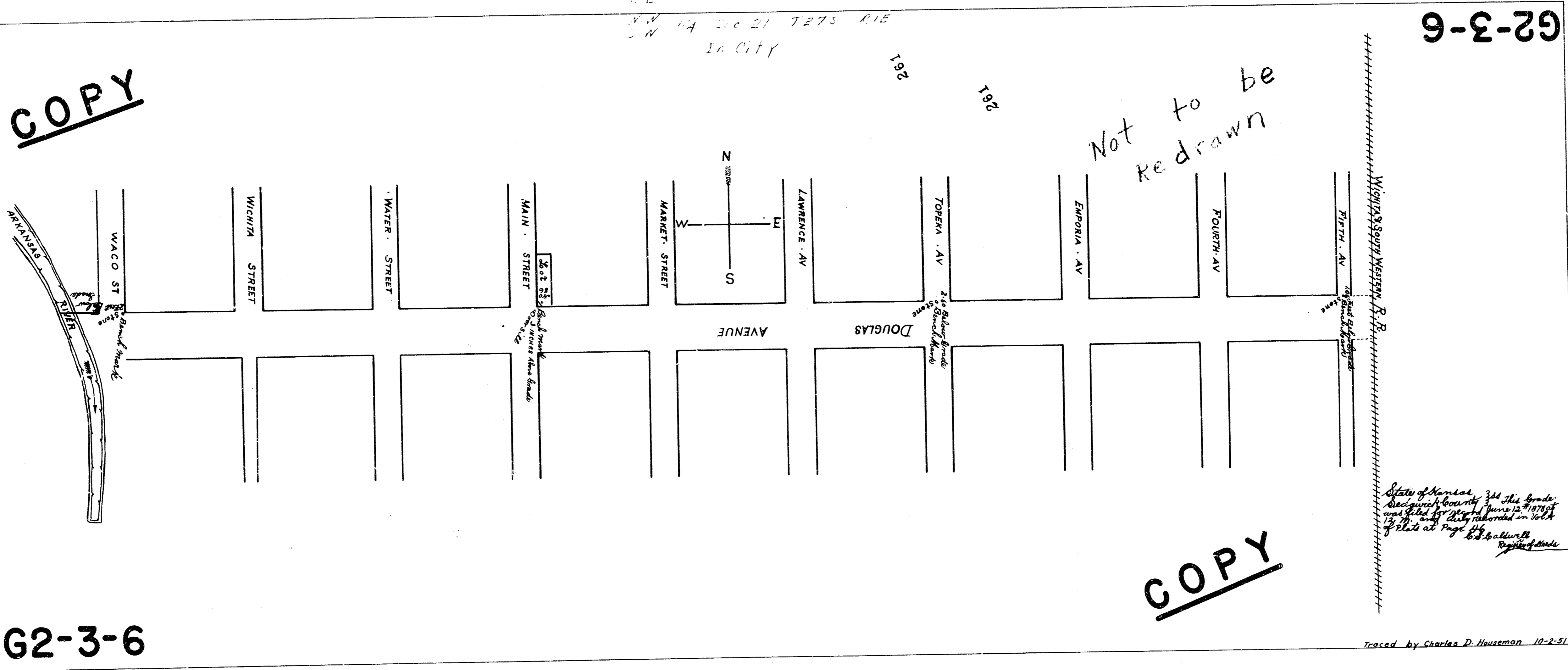
COPY

G2-3-6

NE 1/4 Sec 20 T27S R1E
SW 1/4 Sec 21 T27S R1E
IN CITY

106
106

Not to be
redrawn



G2-3-6

State of Kansas
County of
City of
This map was filed for record on page 10-2-51
of the records of the
Register of Deeds

Traced by Charles D. Husteman 10-2-51