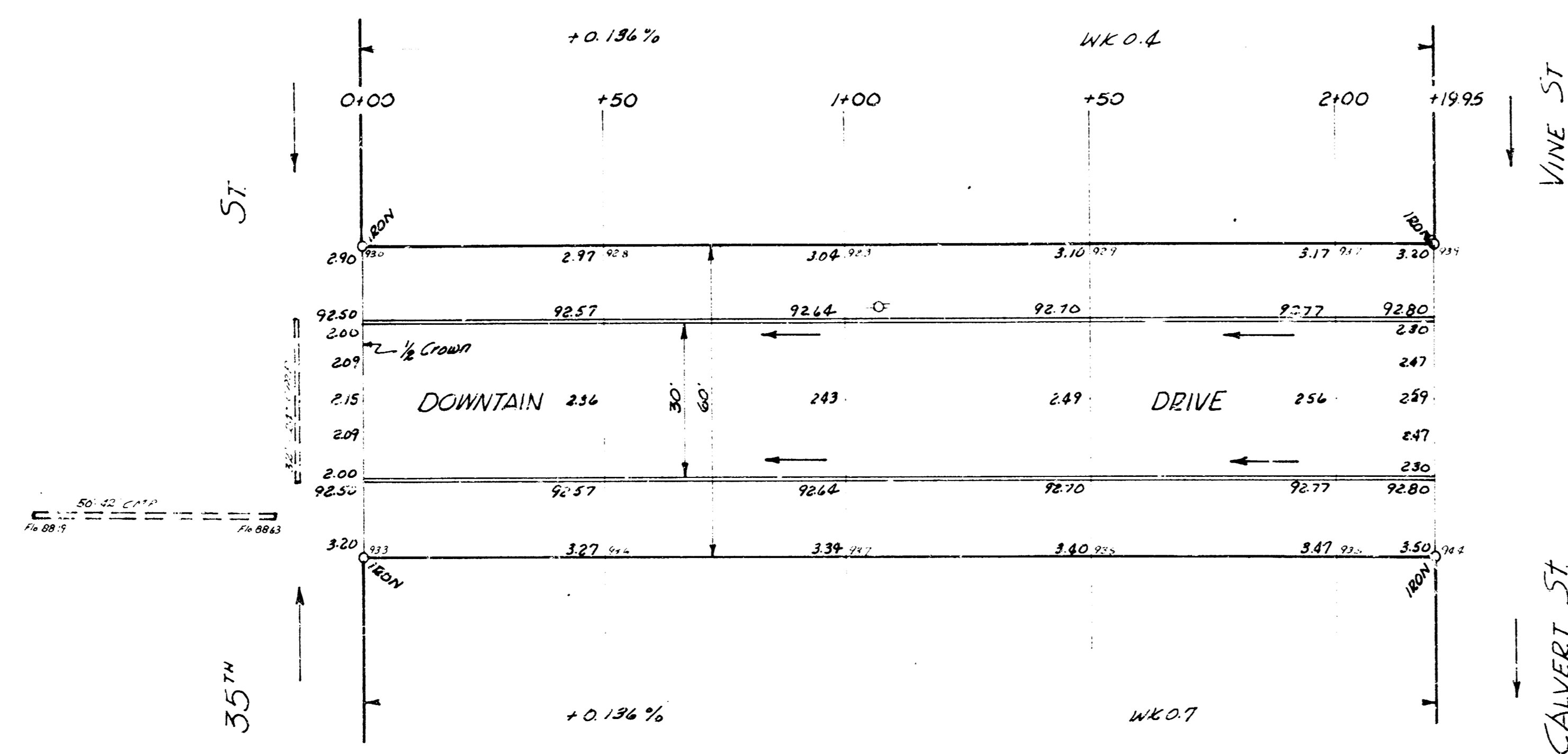
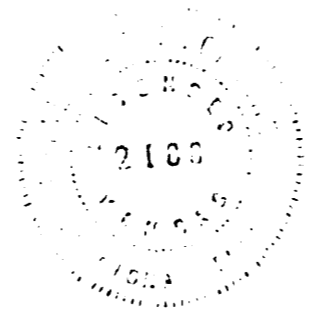


BM: 96.42 SW cor conc parch Ho# 3548 S.Vins.



DOWNTAIN DRIVE
 NL 35th SL Culvert
 30" Conc Pipe
 CITY OF WICHITA, KANSAS
 B.E. SMITH CITY ENGINEER
 JULY 1952 PROJ NO C16-101



Young
 Davis
 Greene