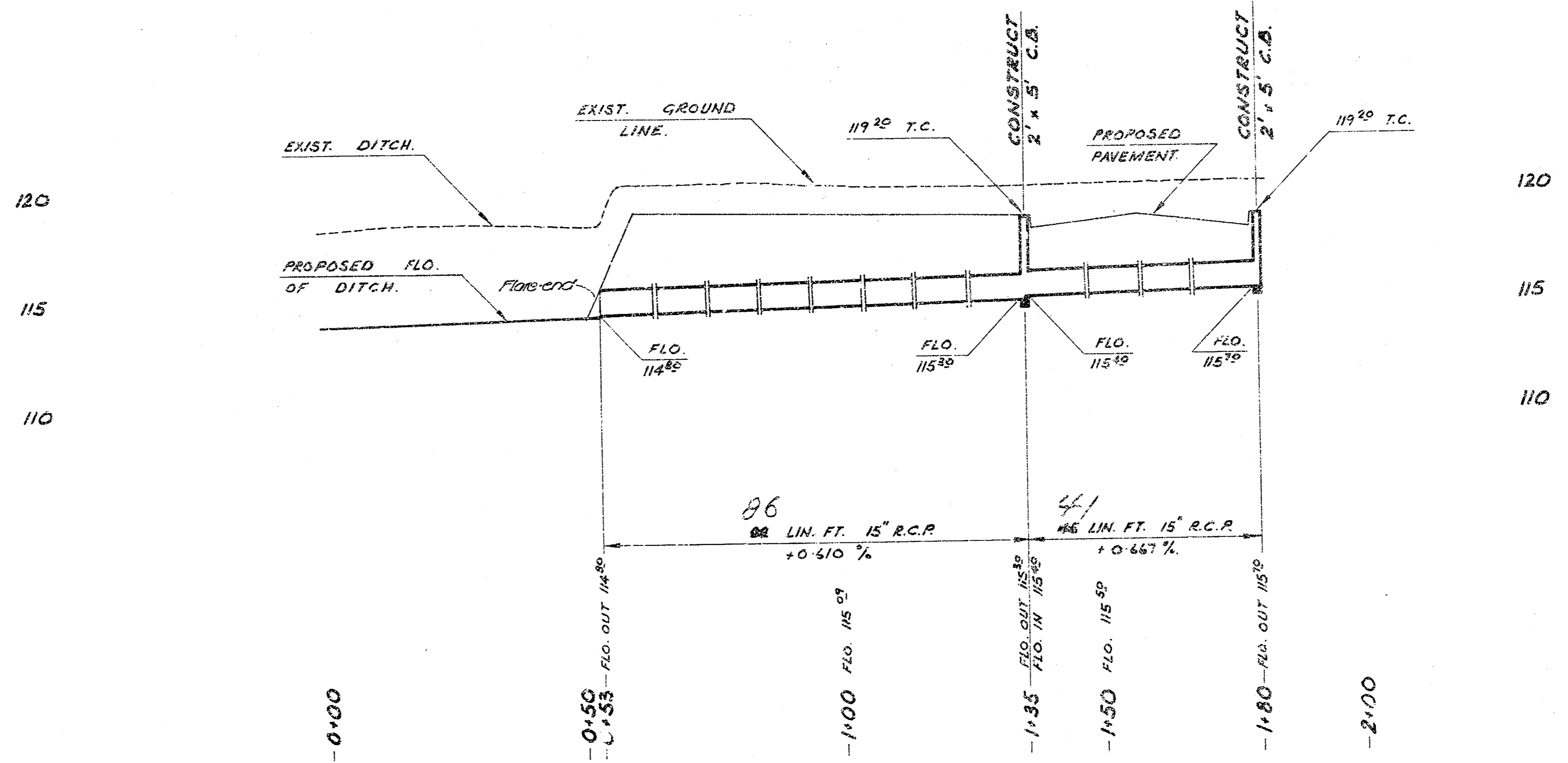
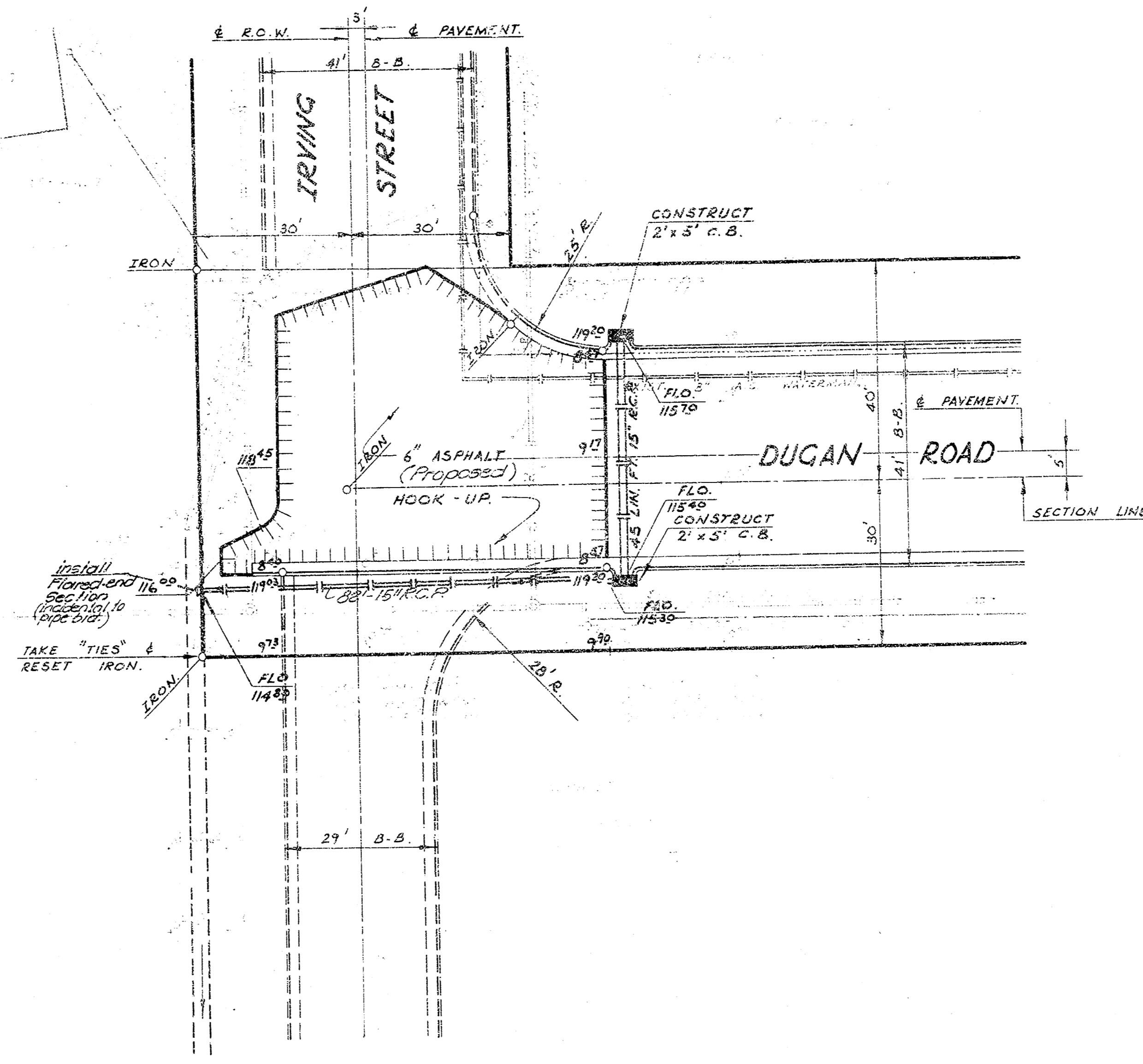


SCALES.
 PLAN. 1" = 20'
 PROFILE 1" = 20'
 HORIZ. 1" = 20'
 VERT. 1" = 5'

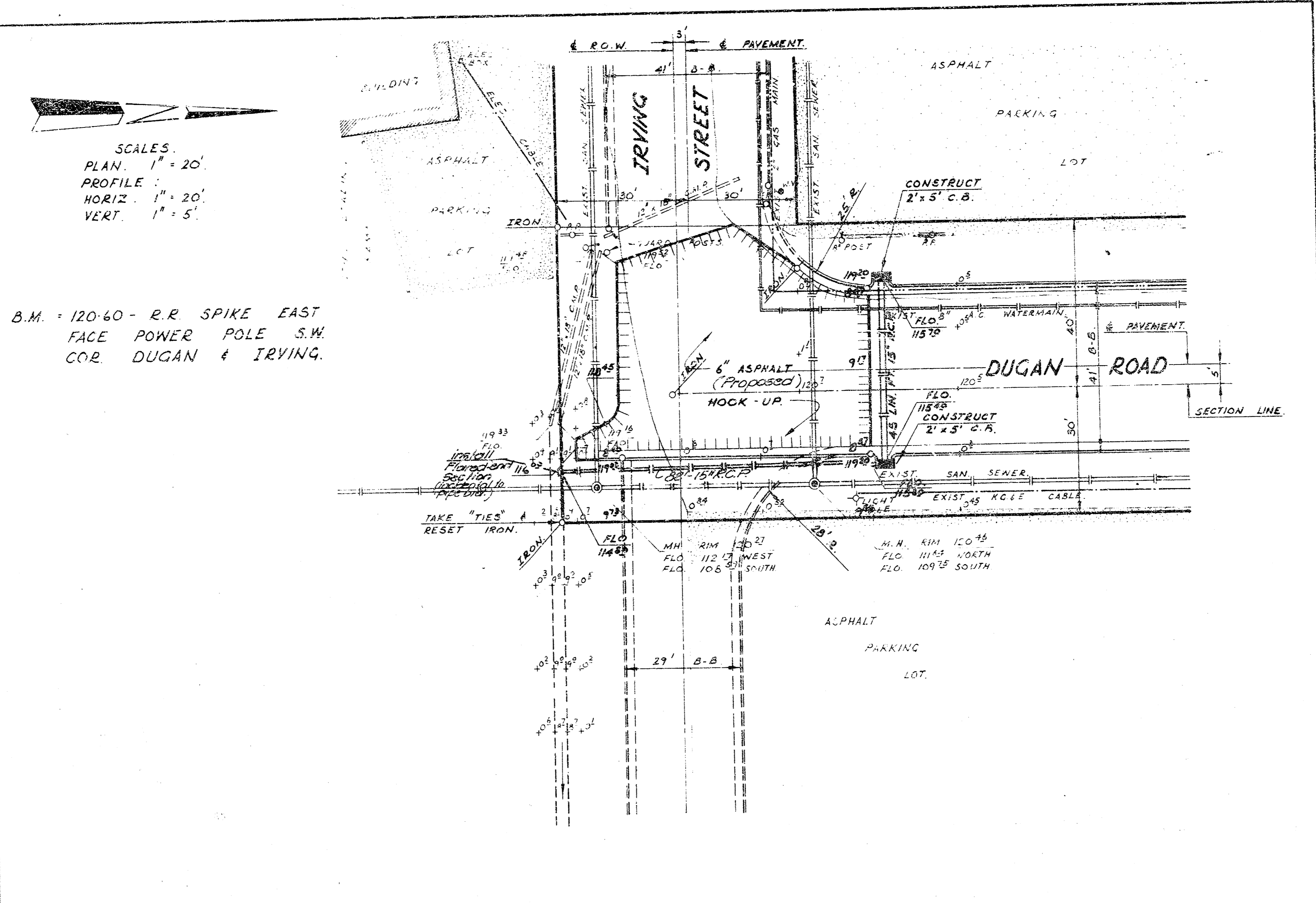
B.M. 120.60 - R.R. SPIKE EAST
 FACE POWER POLE S.W.
 COR. DUGAN & IRVING.

D.L. KRUG,
 I. BOYERFIELD & CO.



As Built 4-8-76

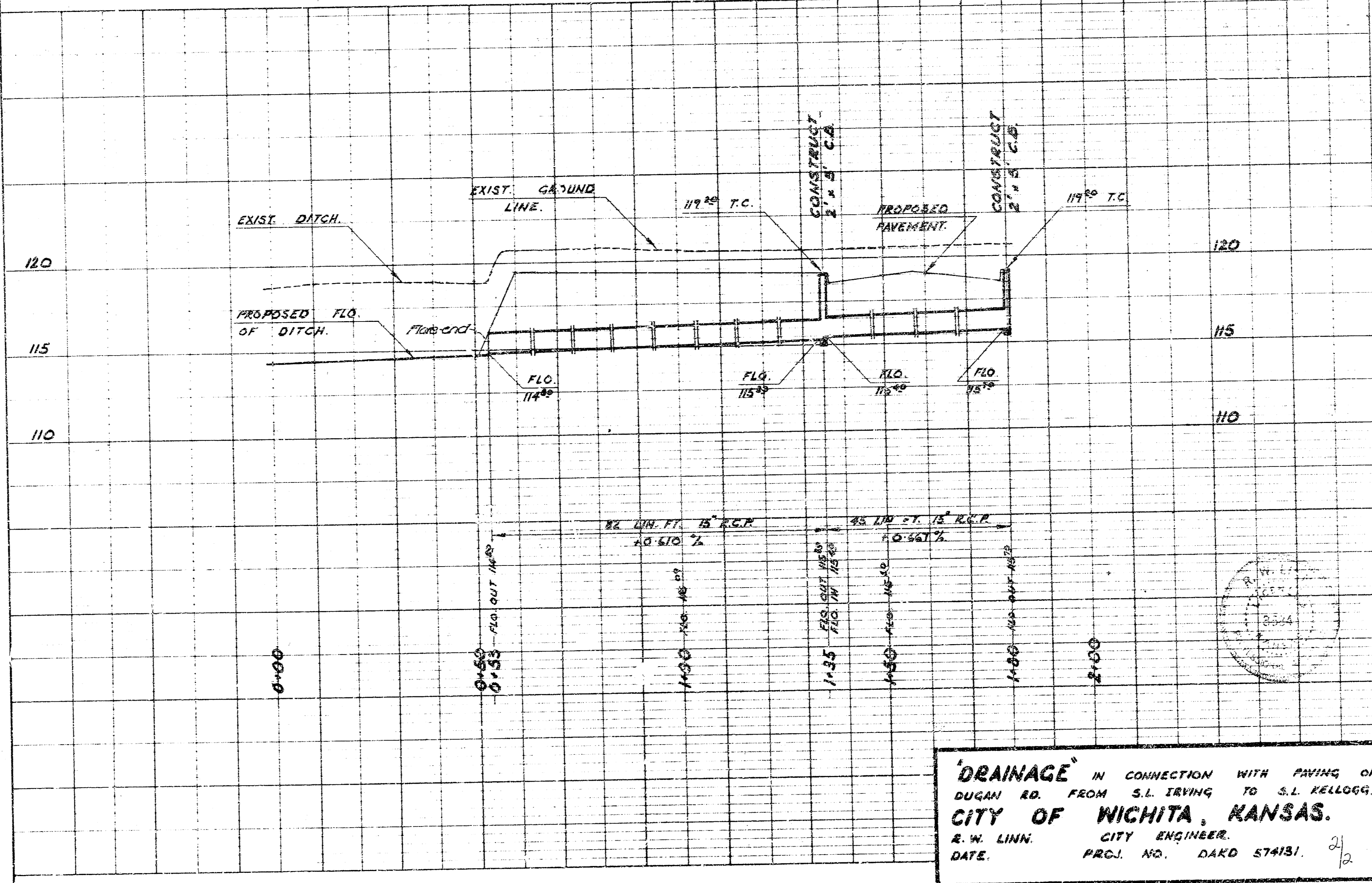
"DRAINAGE" IN CONNECTION WITH PAVING OF DUGAN RD. FROM S.L. IRVING TO S.L. KELLOGG.	
CITY OF WICHITA, KANSAS.	
R. W. LINN.	CITY ENGINEER.
DATE.	PROJ. NO. DAKO 574131.



B.M. = 120-60 - R.R. SPIKE EAST
FACE POWER POLE S.W.
COR. DUGAN & IRVING.

SCALES
PLAN 1" = 20'
PROFILE 1" = 20'
HORIZ. 1" = 20'
VERT. 1" = 5'

PLAN
D.L. KRUG, ENGINEER
J. BUTTERFIELD & SONS, INC., DRAFTSMAN
NOTE BOOK NO. 10000
NO. 146



PROFILE
D.L. KRUG, ENGINEER
J. BUTTERFIELD & SONS, INC., DRAFTSMAN
NOTE BOOK NO. 10000
NO. 146

DRAINAGE IN CONNECTION WITH PAVING OF
DUGAN RD. FROM S.L. IRVING TO S.L. KELLOGG.
CITY OF WICHITA, KANSAS.
R. W. LINN, CITY ENGINEER.
DATE: _____ PROJ. NO. DA00 574131.