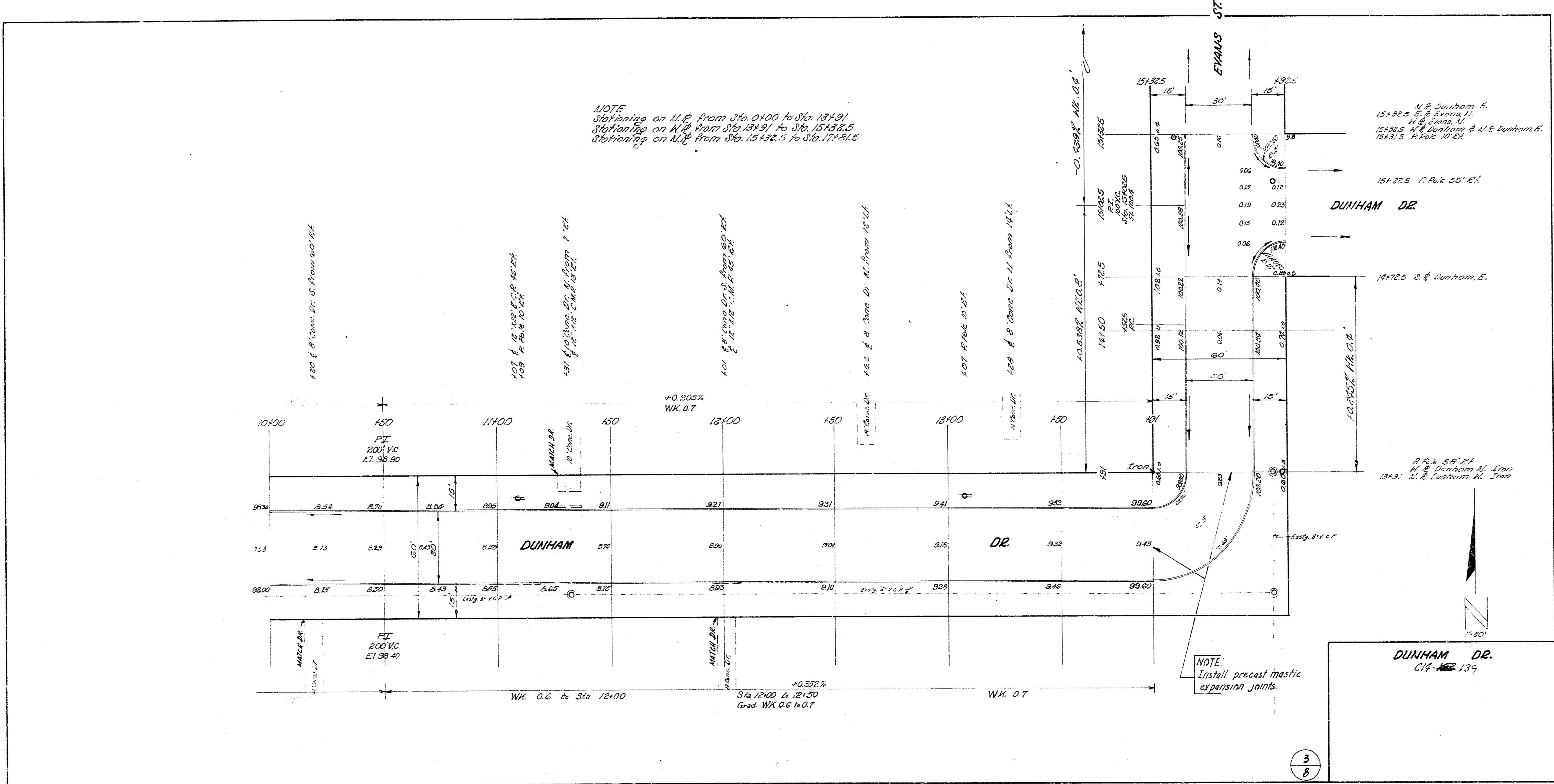


DUNHAM DR.
 C 14-103 139

2
8

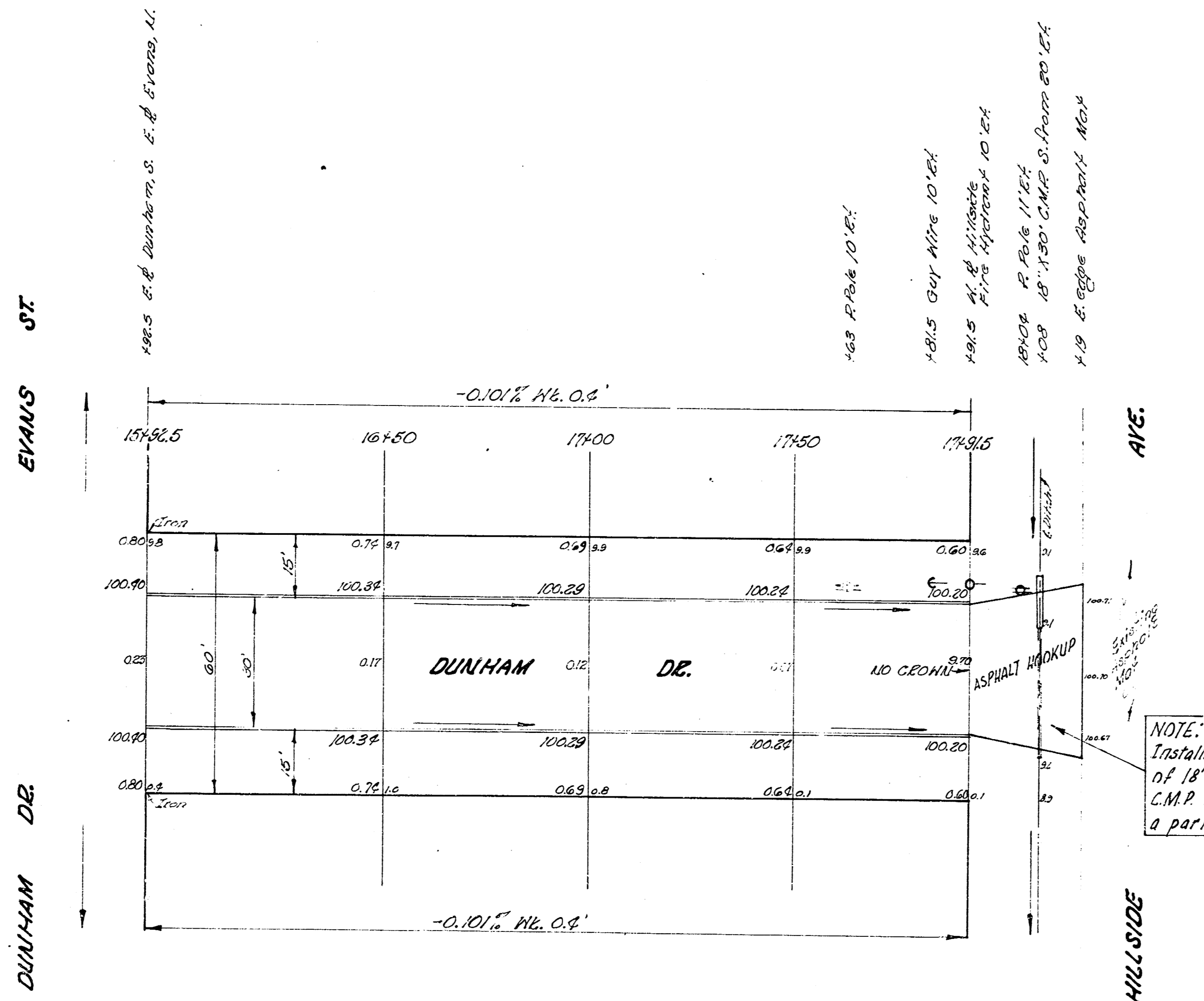


NOTE
 Stationing on N.P. from Sta. 0+00 to Sta. 12+91
 Stationing on R.P. from Sta. 13+91 to Sta. 15+32.5
 Stationing on N.P. from Sta. 15+32.5 to Sta. 17+41.5

NOTE:
 Install precast mastic
 expansion joints

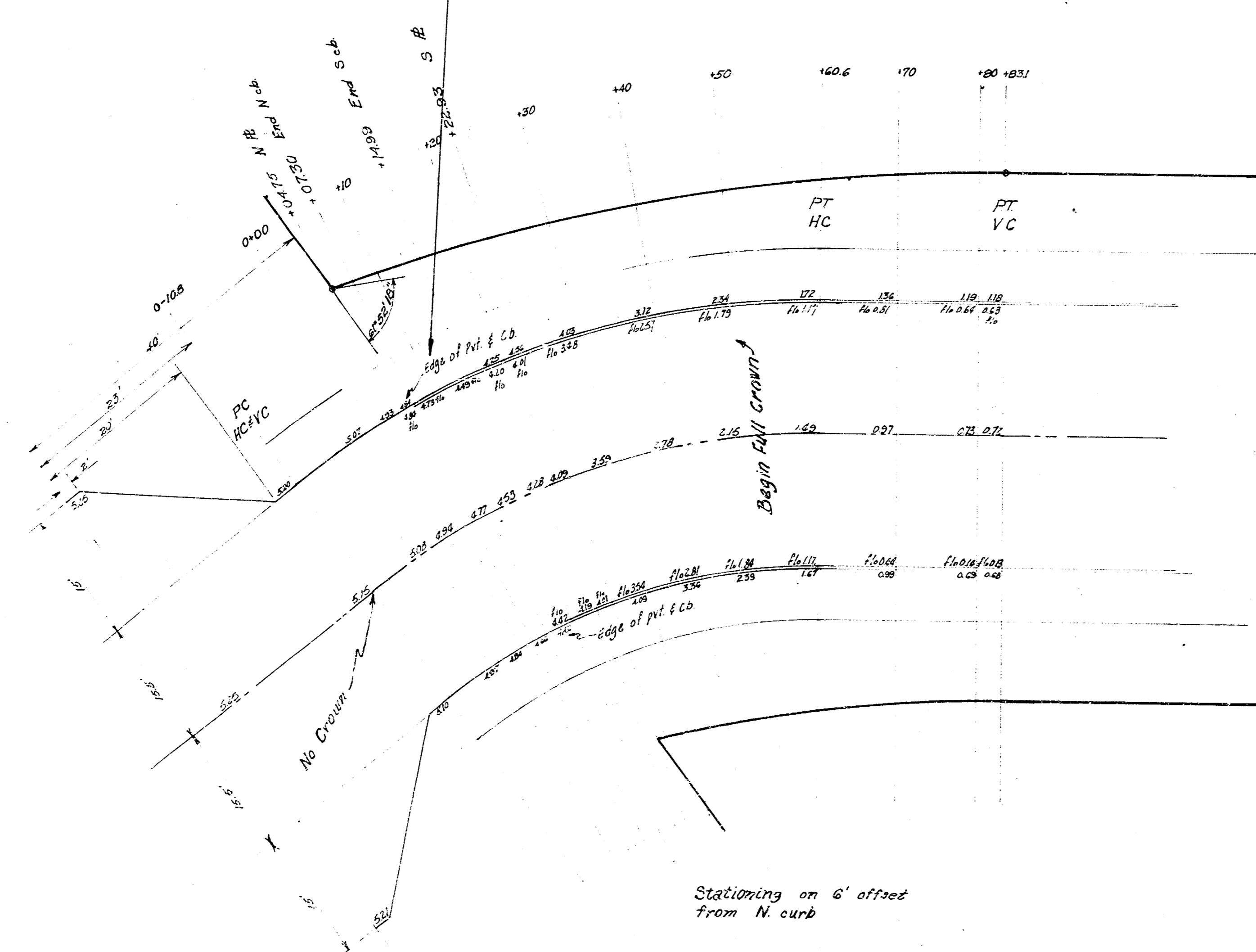
DUNHAM DR.
 CIV. 139

3
 8



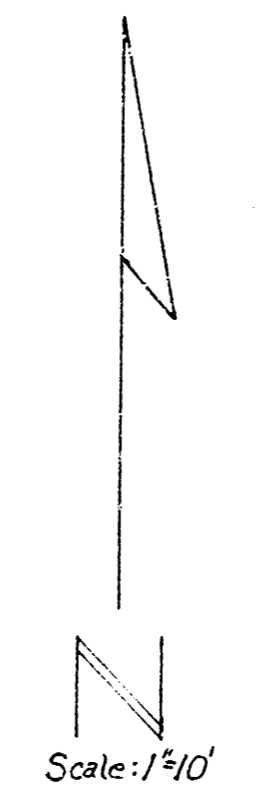
DUNHAM DE

NOTE:
 Curbs to end of W.B. East 9' of both H. & S. curbs
 to be tapered from full height to 0' height at W.B.
 Warped sections on & from Sta 0+10.8 to Sta 0+50.
 Set & elevations shown.



Curve Data: 6' offset from N curb
 R=107.61 Δ=30°00'48"

Station	Total Deflection	Chord 6' offset N curb	Chord 6' offset S curb
0+00	2°52'30"	10.80'	6.52'
0+20	8°11'56"	19.99'	12.17'
0+40	13°31'22"	19.99'	12.17'
0+60.6	19°00'24"	20.59'	12.54'
Long Chord		70.09'	42.74'



DUNHAM DR.
 C14-137

