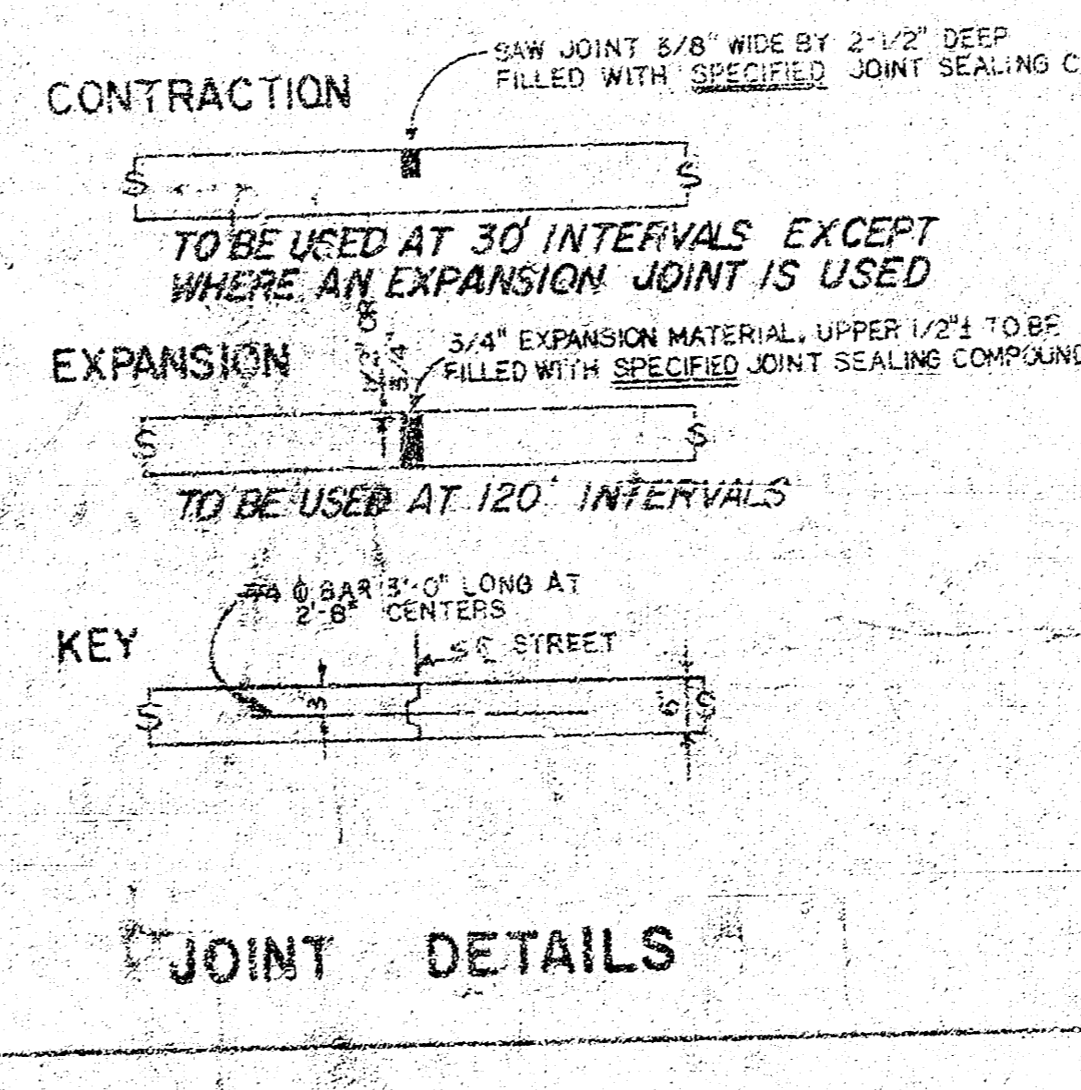
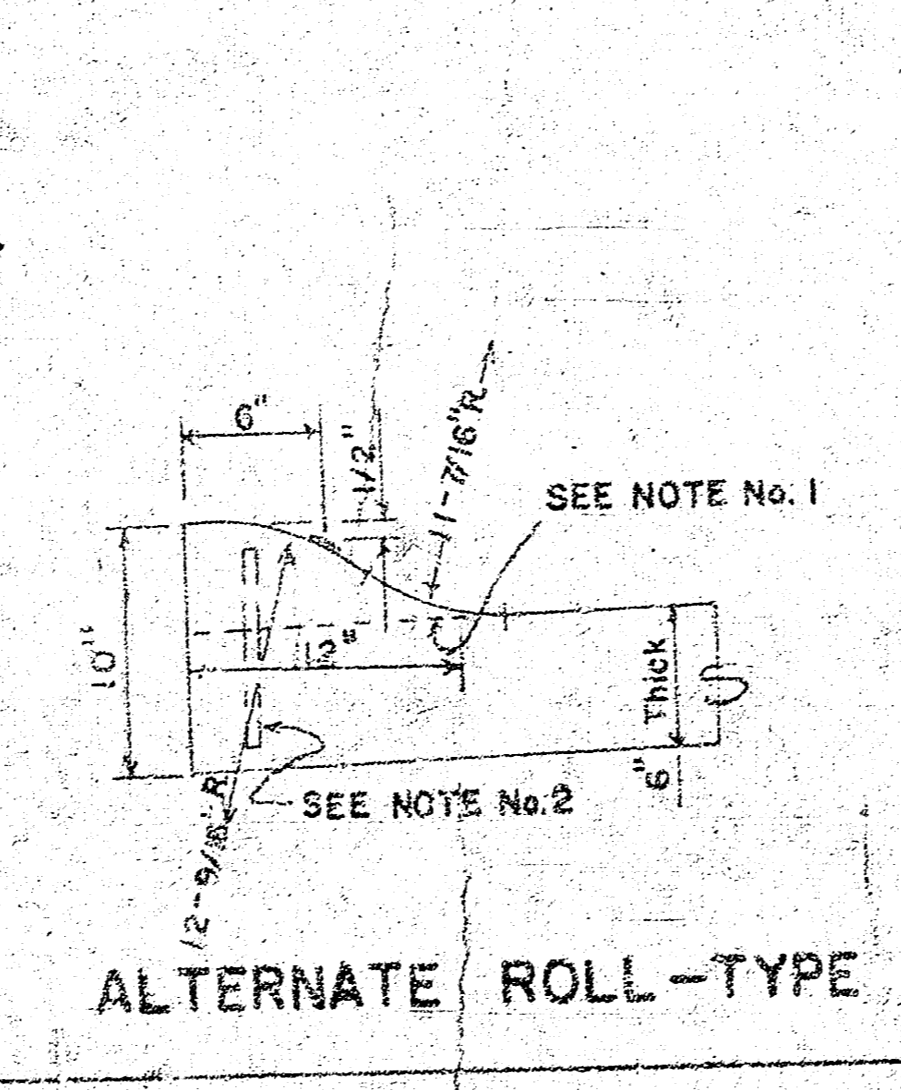
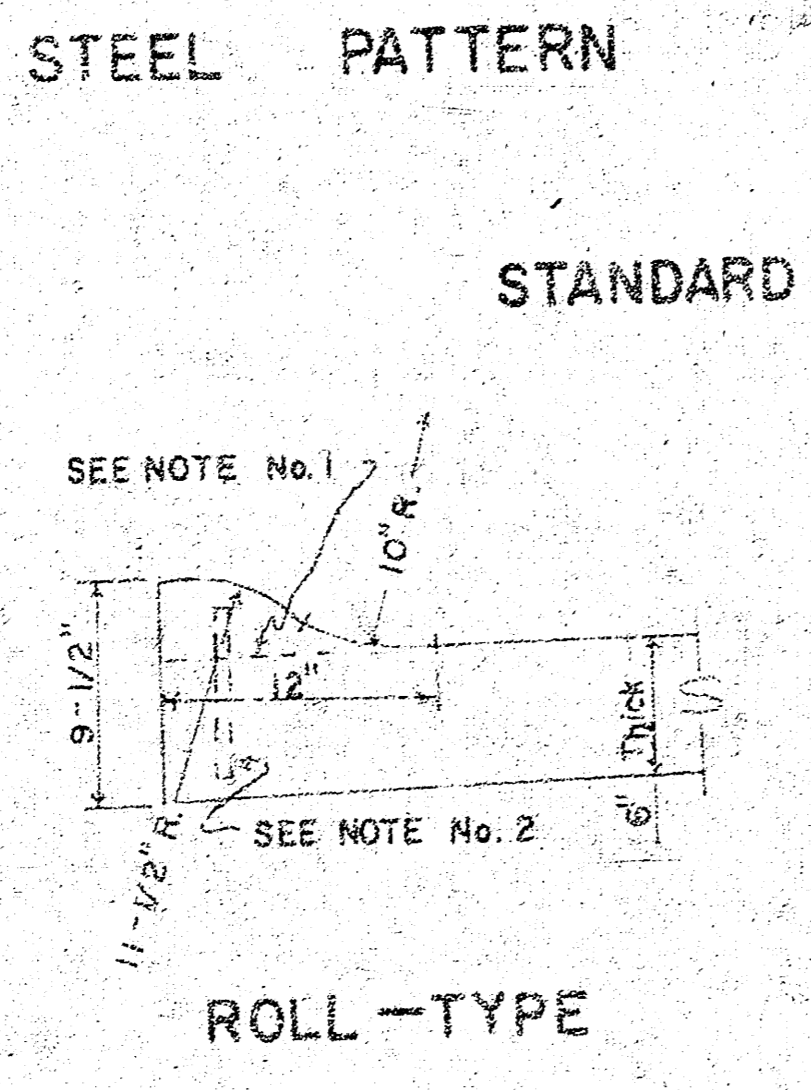
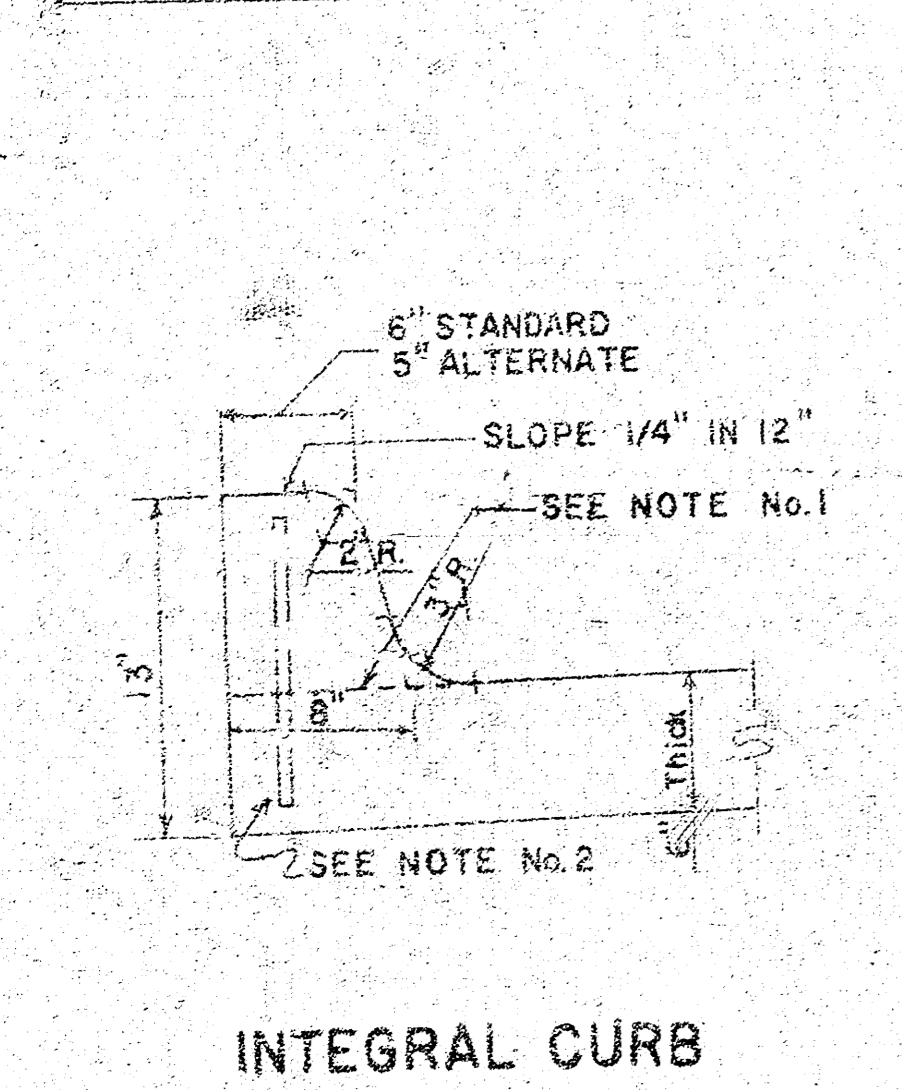
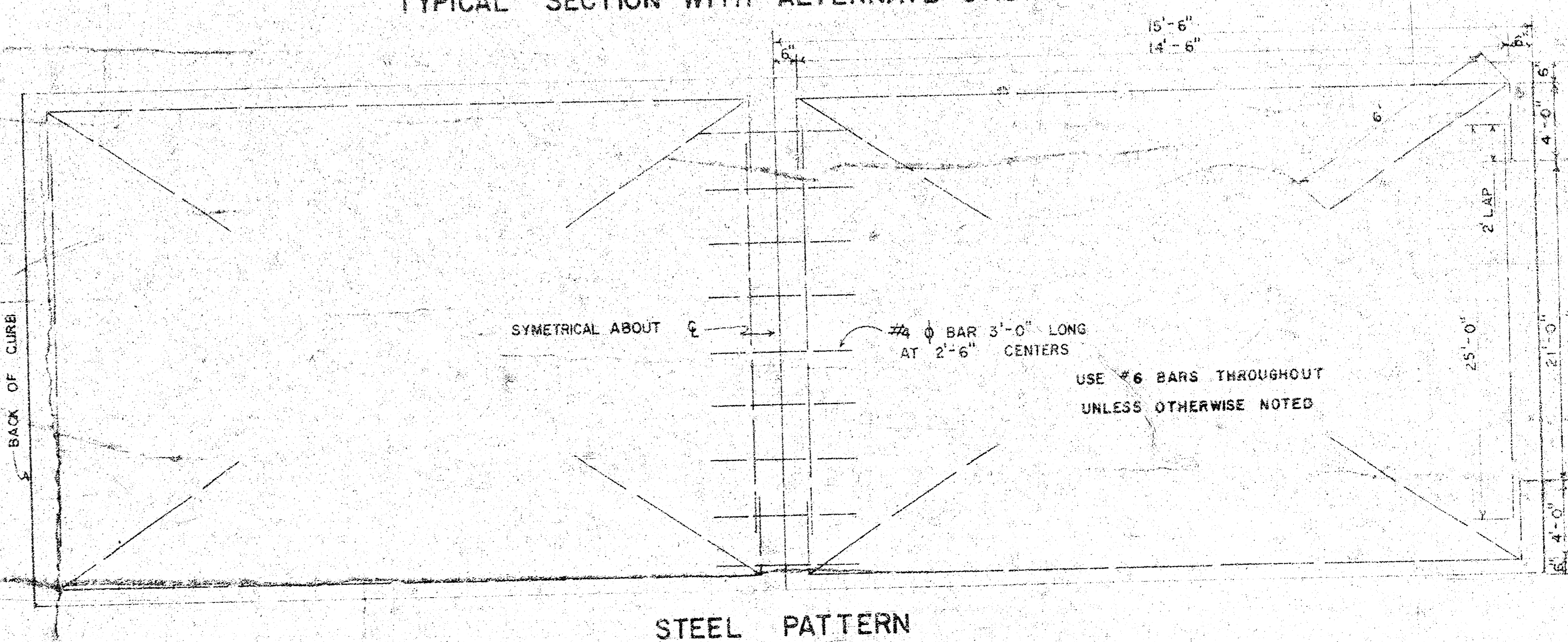
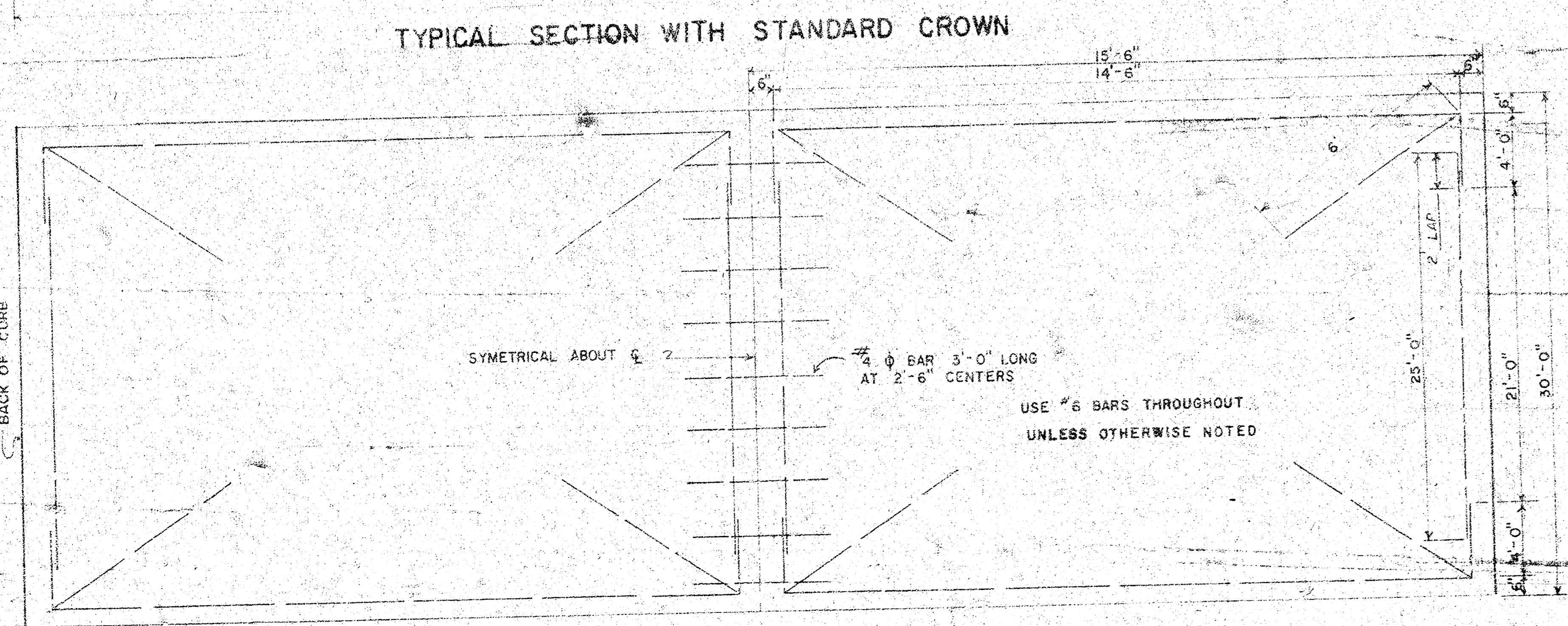
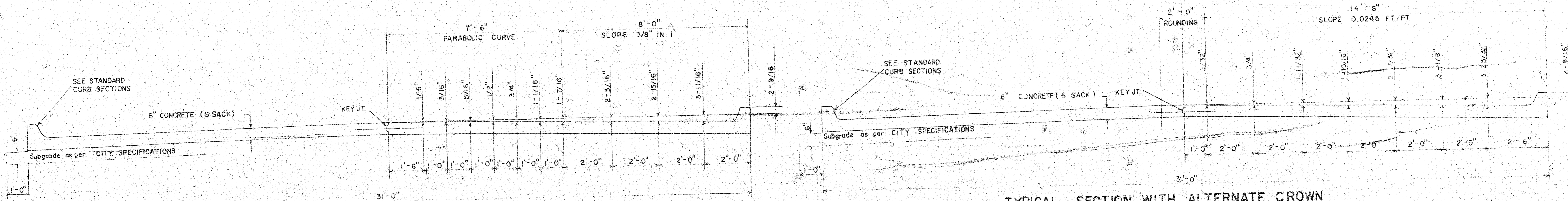


**DUNSWORTH & NEWELL**  
 S. L. Country Acres Ave. to 74.79' E. of W.L. lot 11, Blk. A, Central Heights 2nd Addn.  
**TYPICAL SECTIONS OF 30' CONCRETE PAVEMENT**  
 Proj. No. DAKS576032



**GENERAL NOTES**

- CONTRACTION JOINTS MAY BE CONSTRUCTED IN INTEGRAL CURB BY SAWING WITH AN APPROVED CONCRETE SAW. THE SAW CUT SHALL EXTEND THROUGH THE CURB TO THE PAVEMENT. SAWED CONTRACTION JOINTS SHALL HAVE A MAXIMUM SPACING OF 10'.
- INTEGRAL CURB SHALL BE TIED TO THE PAVEMENT BASE WITH SHORT DEFORMED DOWEL BARS SPACED AT 2'-6" INTERVALS. THESE DOWEL BARS SHALL NOT BE LESS THAN 1/2" OR MORE THAN 3/4" IN DIAMETER.

**CITY OF WICHITA, KANSAS**  
 Department of Public Works Engineering Division  
 R.W. Linn City Engineer  
 Date June, 1976 Project No. DAKS576032

Survey: Blank  
Plan: Henry  
Ck: Henry  
Checked: [Signature]

90° R. = 80' T. = 80' L. = 125.66' LC. = 113.14'

CURVE DATA BASED ON  $\theta$  RAD.  $42.25^\circ$

STA.	ARC	CHORD LENGTH	DEFLECTION	TOTAL DEFLECTION
1+97.19			0°00'00"	0°00'00"
2+25	27.81'	19.72'	35.63'	9°57'51"
2+50	25.00'	17.74'	32.06'	8°57'09"
2+75			8°57'09"	27°51'49"
3+00	25.00'	17.74'	32.06'	8°57'09"
3+22.85	22.85'	16.23'	29.32'	8°11'02"

Defl. = 21.4859175 Min./ft.

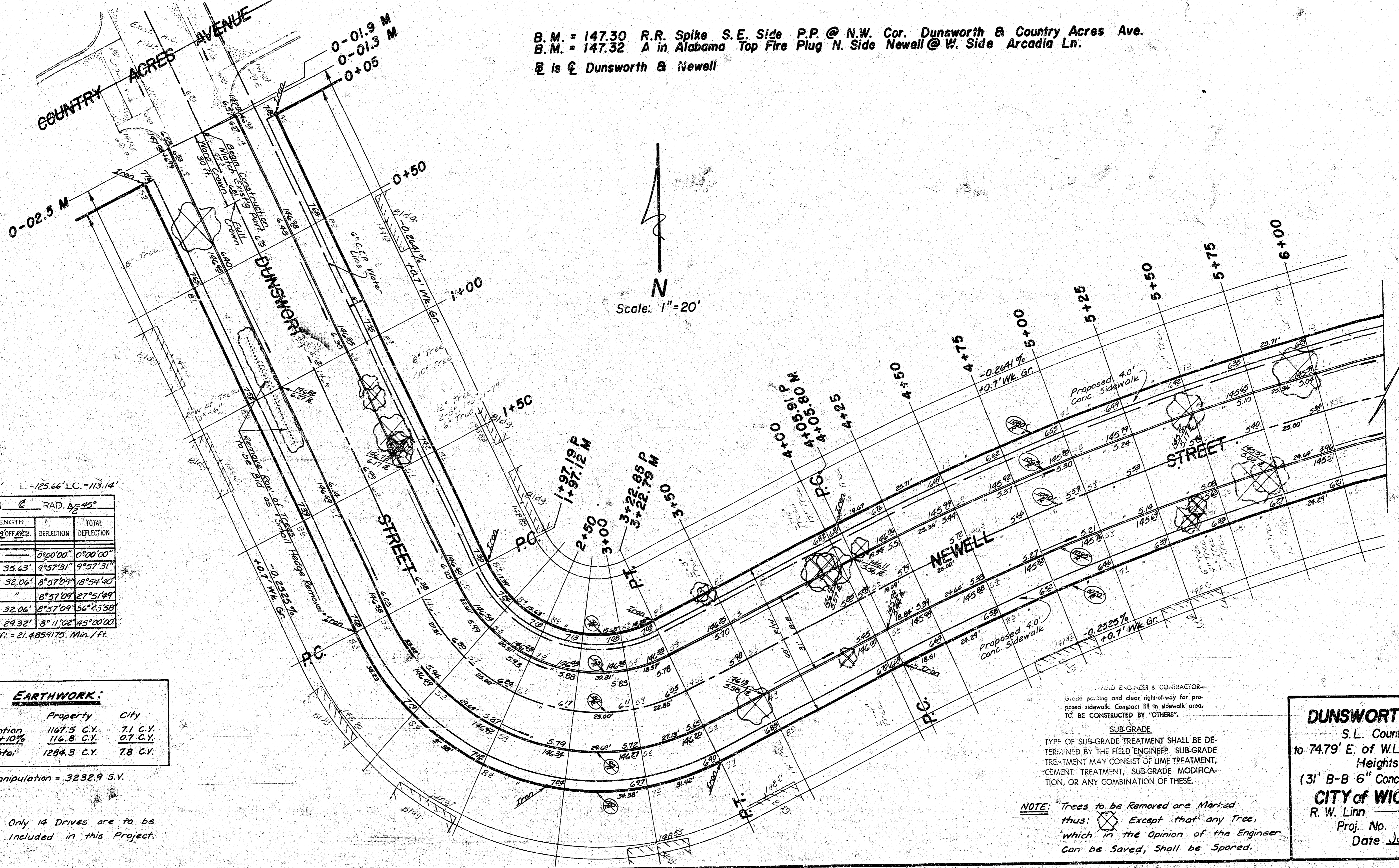
**EARTHWORK:**

	Property	City
Excavation	1107.5 C.Y.	7.1 C.Y.
+10%	116.8 C.Y.	0.7 C.Y.
Total	1284.3 C.Y.	7.8 C.Y.

Manipulation = 3232.9 S.V.

NOTE: Only 14 Drives are to be included in this Project.

B.M. = 147.30 R.R. Spike S.E. Side P.P. @ N.W. Cor. Dunsworth & Country Acres Ave.  
B.M. = 147.32 A in Alabama Top Fire Plug N. Side Newell @ W. Side Arcadia Ln.  
@ is @ Dunsworth & Newell

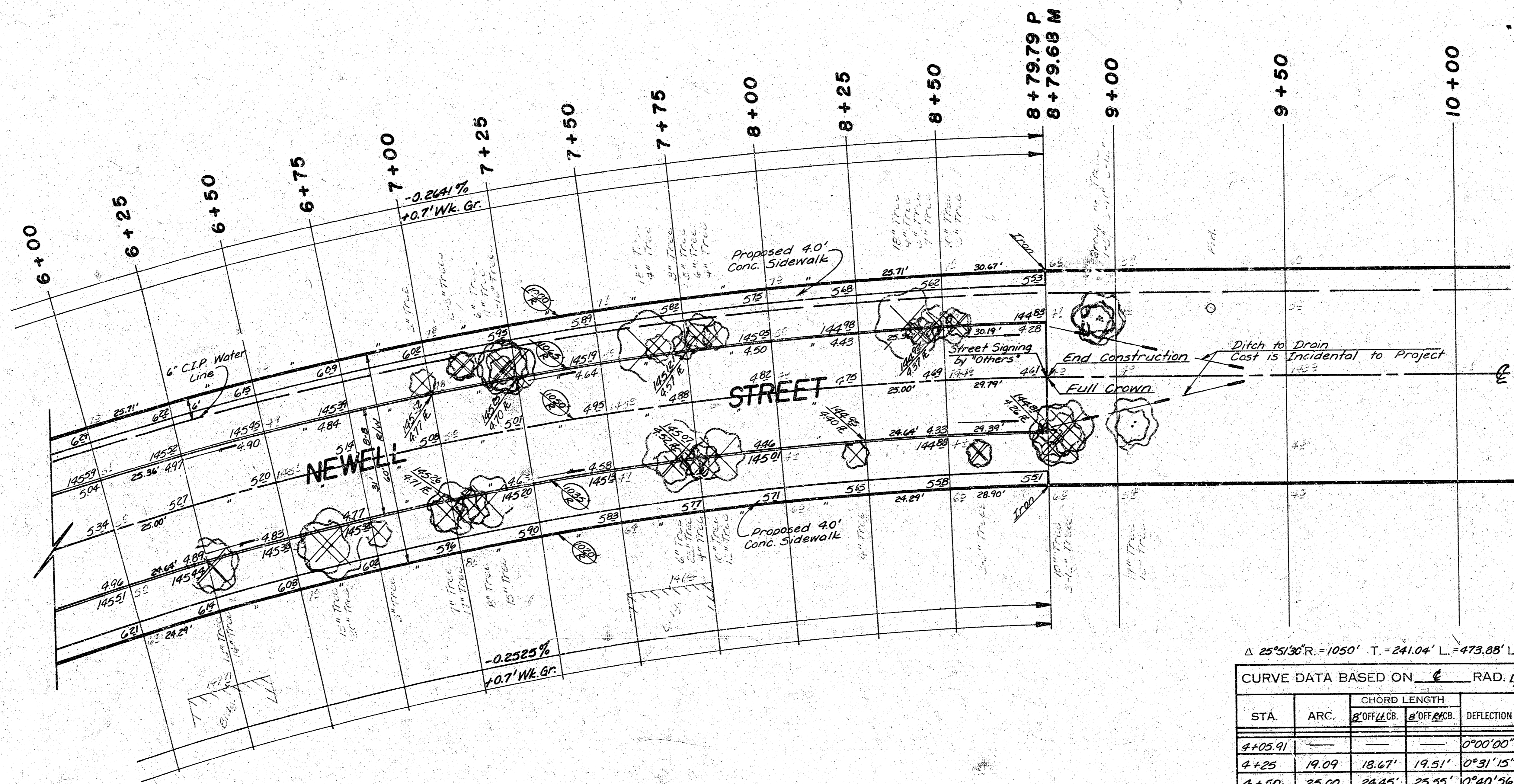


FIELD ENGINEER & CONTRACTOR  
Grade parking and clear right-of-way for proposed sidewalk. Compact fill in sidewalk area. TO BE CONSTRUCTED BY "OTHERS".

SUB-GRADE  
TYPE OF SUB-GRADE TREATMENT SHALL BE DETERMINED BY THE FIELD ENGINEER. SUB-GRADE TREATMENT MAY CONSIST OF LIME TREATMENT, CEMENT TREATMENT, SUB-GRADE MODIFICATION, OR ANY COMBINATION OF THESE.

NOTE: Trees to be Removed are Marked thus: Except that any Tree, which in the Opinion of the Engineer can be Saved, shall be Spared.

**DUNSWORTH & NEWELL**  
S.L. Country Acres Ave.  
to 74.79' E. of W.L. lot 11, Blk. A, Central Heights 2nd Addn.  
(31' B-B 6" Conc. Pavt. with Int. Cb.)  
**CITY OF WICHITA, KANSAS**  
R. W. Linn City Engineer  
Proj. No. DAKS 576032  
Date June, 1976



$\Delta 25^{\circ}51'36'' R. = 1050'$   $T. = 241.04'$   $L. = 473.88'$   $LC. = 469.87'$

CURVE DATA BASED ON  $\frac{1}{2}$  RAD.  $N = 12^{\circ}32'42''$

STA.	ARC.	CHORD LENGTH		DEFLECTION	TOTAL DEFLECTION
		2' OFF/6' CB.	2' OFF/6' CB.		
4+05.91				0°00'00"	0°00'00"
4+25	19.09	18.67'	19.51'	0°31'15"	0°31'15"
4+50	25.00	24.45'	25.55'	0°40'56"	1°12'11"
4+75	"	"	"	0°40'55"	1°53'06"
5+00	"	"	"	0°40'56"	2°34'02"
5+25	"	"	"	0°40'55"	3°14'57"
5+50	"	"	"	0°40'56"	3°55'53"
5+75	"	"	"	0°40'55"	4°36'48"
6+00	"	"	"	0°40'56"	5°17'44"
6+25	"	"	"	0°40'55"	5°58'39"
6+50	"	"	"	0°40'56"	6°39'35"
6+75	"	"	"	0°40'55"	7°20'30"
7+00	"	"	"	0°40'56"	8°01'26"
7+25	"	"	"	0°40'55"	8°42'21"
7+50	"	"	"	0°40'56"	9°23'17"
7+75	"	"	"	0°40'56"	10°04'13"
8+00	"	"	"	0°40'55"	10°45'08"
8+25	"	"	"	0°40'56"	11°26'04"
8+50	25.00'	24.45'	25.55'	0°40'55"	12°06'59"
8+79.79	29.79'	29.14'	30.44'	0°48'46"	12°55'45"

Defl. = 1.6370223 Min./ft