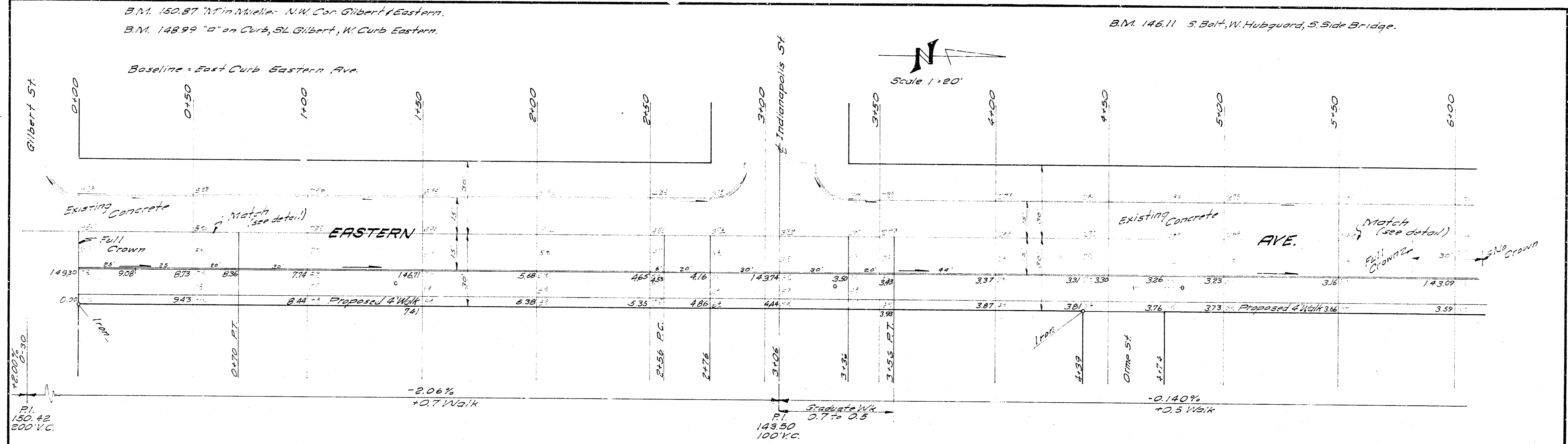
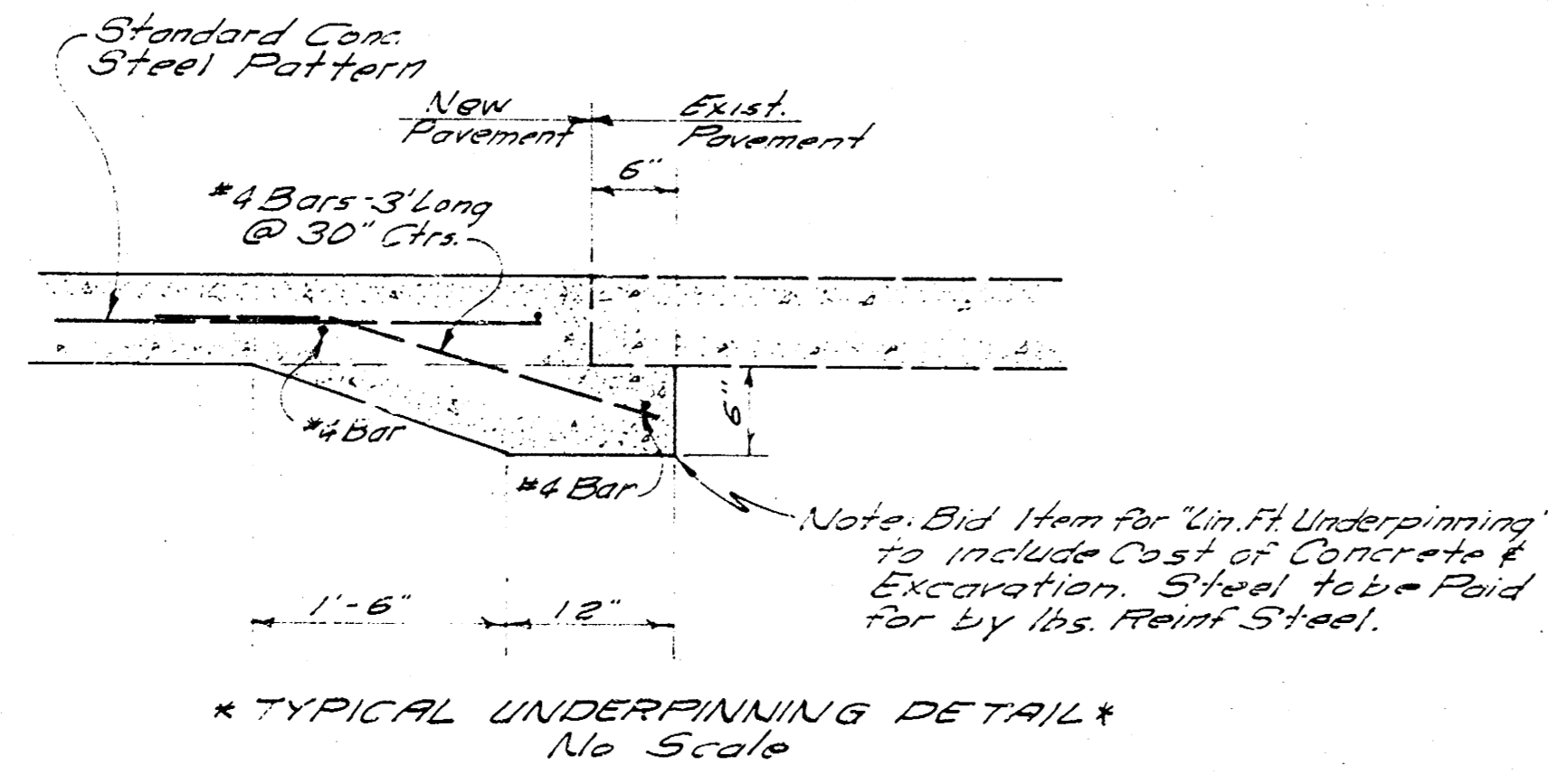


Surveyed by
 J. H. Johnson
 11/13/68

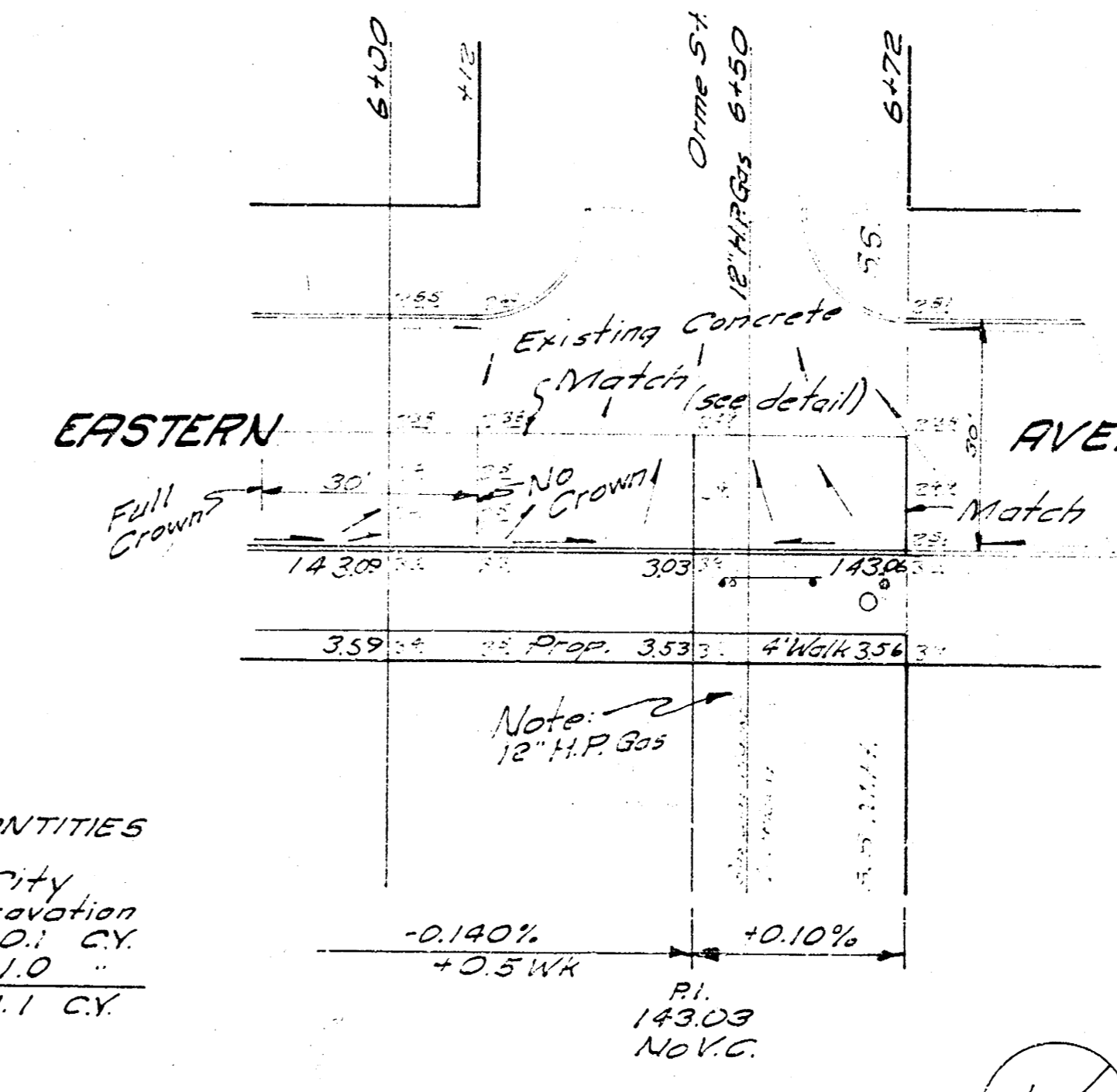


* Note To Field Engineer And Contractor *
 From Sta. 3+50 to Sta. 6+75, Use Extreme Care in Finishing Concrete to Insure Drainage.
 Grade And Clear Parking for Proposed Sidewalk. Sidewalk to be Constructed by "OTHERS"



EARTHWORK QUANTITIES

Excavation	Property	City
704.0 C.Y.	79.4	10.1 C.Y.
+10%	774.4 C.Y.	11.1 C.Y.



EASTERN AVE. E. 1/2
 From S.L. Mason-Cummings Addition
 To S.L. Weaver-Reimold Addition
 15' CONC. & INT. CURB
 B.E. SMITH CITY ENGINEER
 CITY OF WICHITA, KANSAS
 DATE APRIL 1968 C 17-94

1/2