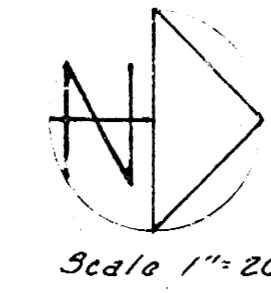


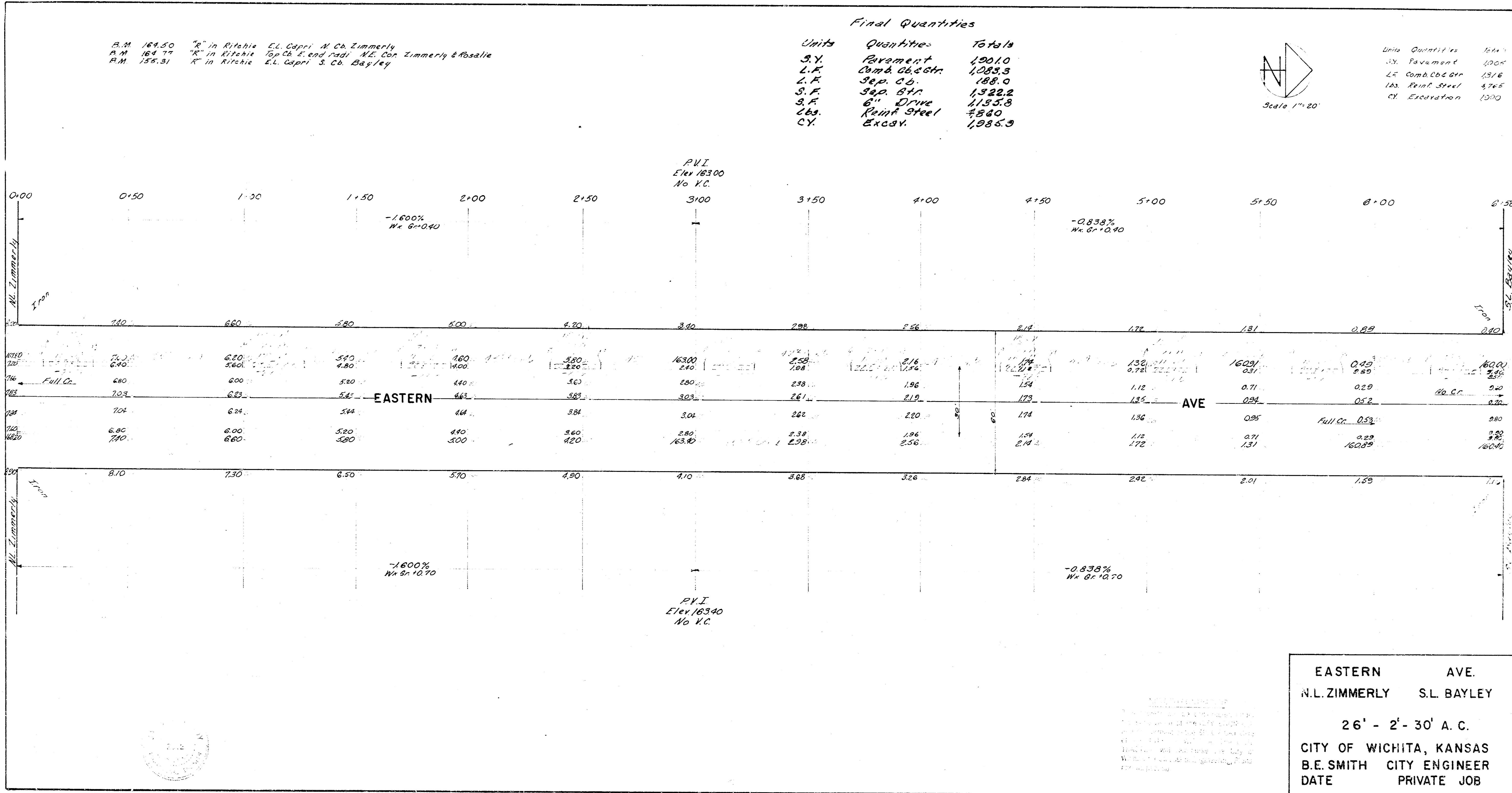
B.M. 164.50 "R" in Ritchie E.L. Capri N. Co. Zimmerly
 B.M. 164.77 "K" in Ritchie Top Ch. E. end radi. N.E. Co. Zimmerly & Rosalik
 B.M. 155.31 "R" in Ritchie E.L. Capri S. Co. Bayley

Final Quantities

Units	Quantities	Totals
S.Y.	Pavement	1201.0
L.F.	Comb. Excav.	1283.3
L.F.	Sep. C.C.	188.0
S.F.	Sep. Grt.	1322.2
S.F.	6" Drive	1153.8
Lbs.	Rein. Steel	4840
C.Y.	Excav.	1985.9



Units	Quantities	Totals
S.Y.	Pavement	1201.0
L.F.	Comb. Excav.	1283.3
Lbs.	Rein. Steel	4840
C.Y.	Excavation	1985.9



EASTERN AVE.
 N.L. ZIMMERLY S.L. BAYLEY
 26' - 2' - 30' A.C.
 CITY OF WICHITA, KANSAS
 B.E. SMITH CITY ENGINEER
 DATE PRIVATE JOB