

B.M. 163.83 N.E. COR. PORCH IN FRONT OF 2ND HOUSE N. OF LINCOLN W.S. CASA LOMA



22+92.5 CONC. PK. 163.70

22+87 CONC. PK. 163.72

22+97.04 CONC. PK. 163.53

21+86.8 CONC. PK. 163.60

21+86.7 CONC. PK. 163.60

Note: BEGIN TO FLATTEN CROWN AT STA 25+25.

-0.933% Wk. 0.5'

-0.107% Wk. .95'

P.T. 24+00

P.I. 100' V.C. 162.90

P.C. 23+00

24+98

23+98

23+50

23+00

22+50

600'

22+00

21+50

21+00

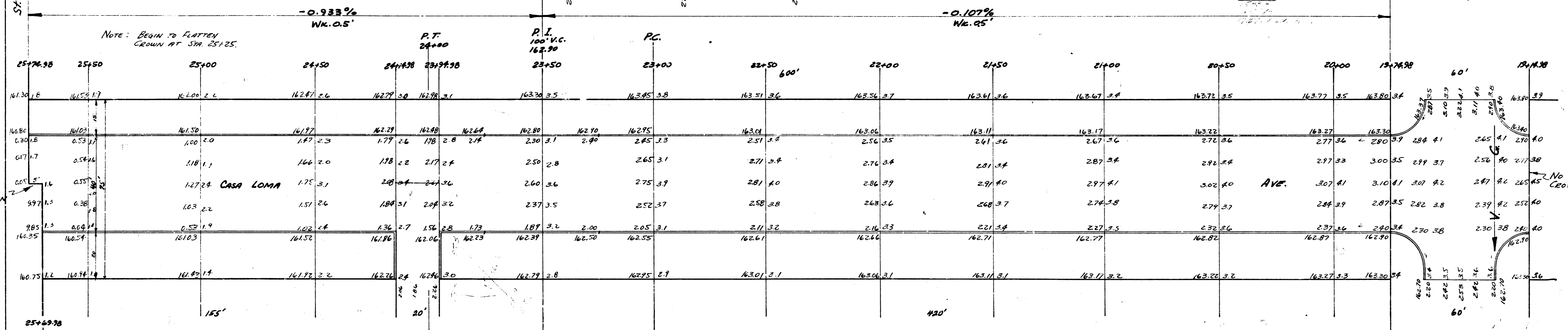
20+50

20+00

19+76.38

60'

19+48.38



-0.978% Wk. 0.4'

-0.107% Wk. 0.4'

P.T. 23

P.I. 100' V.C. 162.50

P.C. 22

23

22

22

22

22

22

22

22

22

22

22

22

22

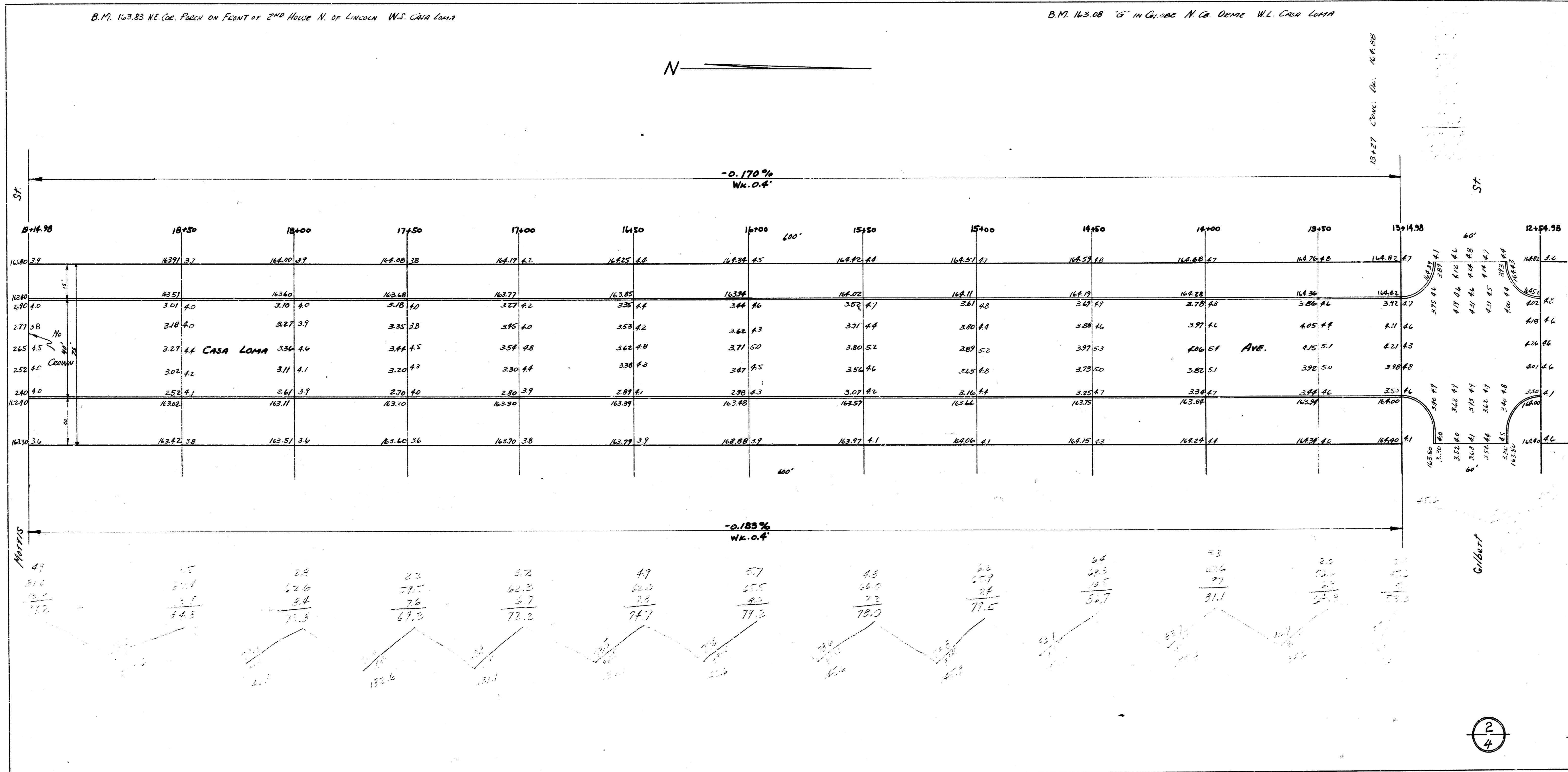
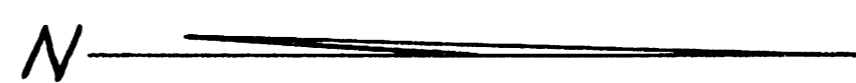
22

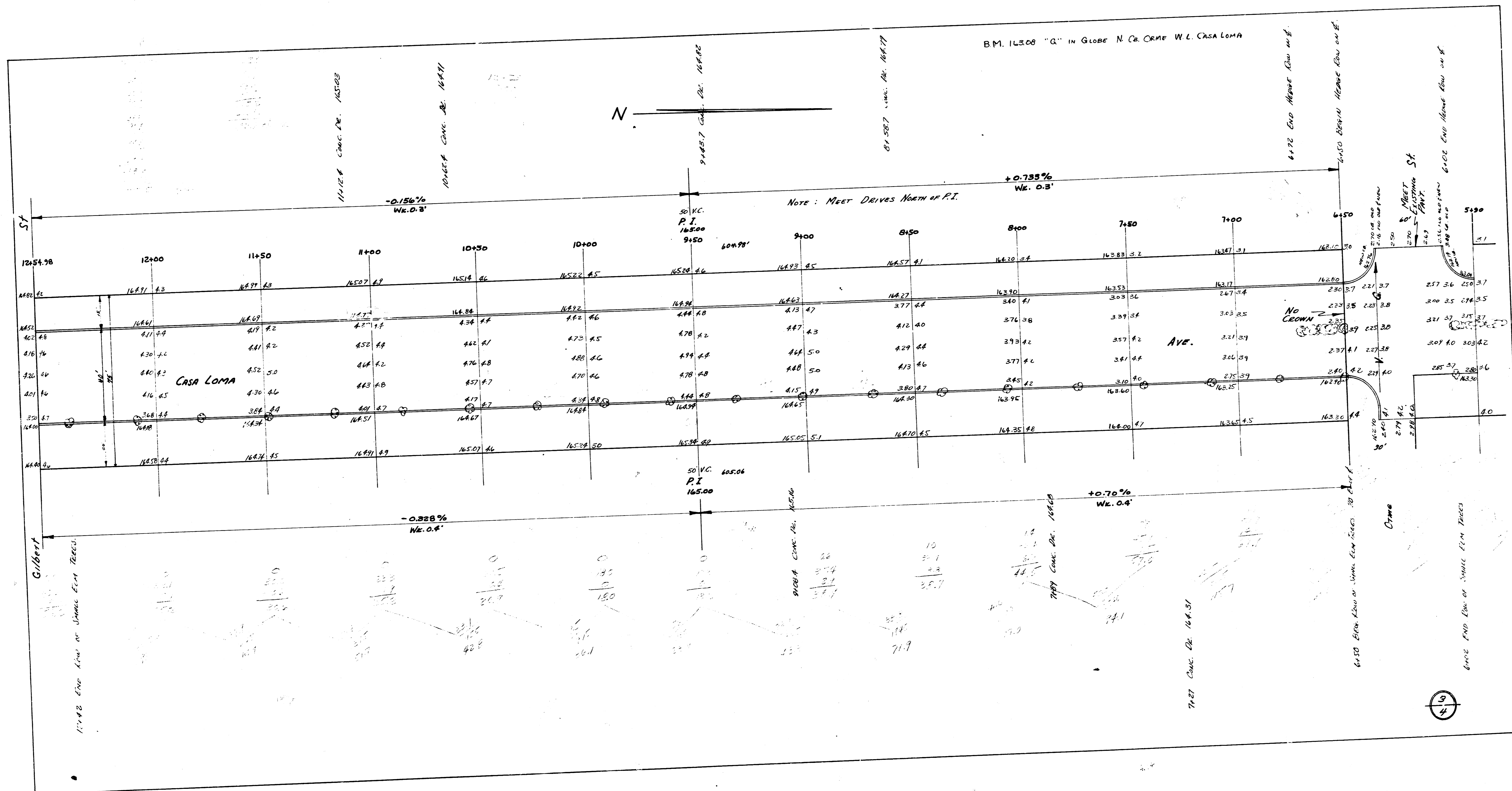


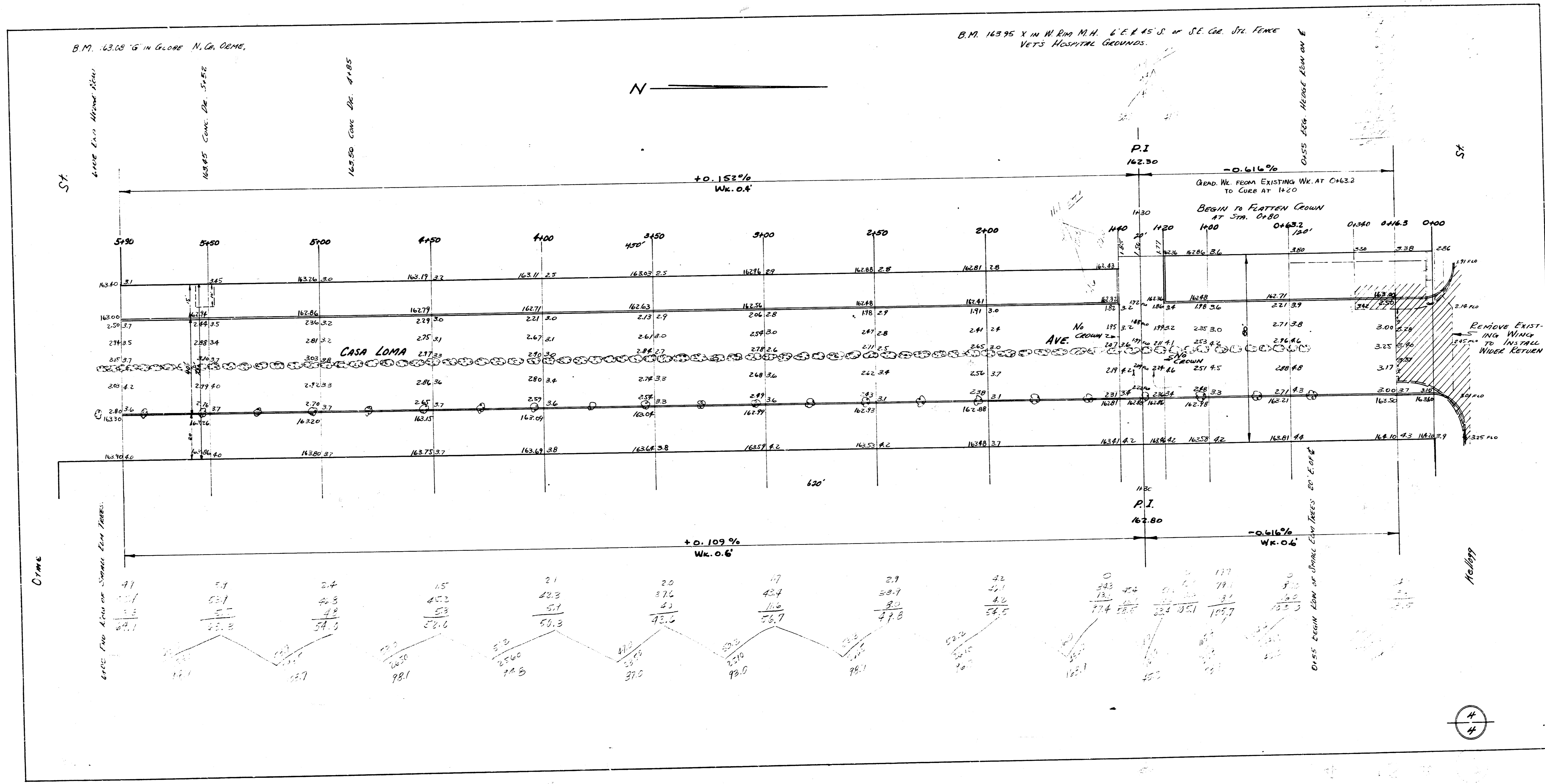
Casa Loma Ave.
Edgemoor
N.E. Lincoln St. Hellogg
40' Conc. Cb.
City of Wichita, Kansas
L.H. White City Engineer
May 1948 Project C18-74

B.M. 163.83 NE Cor. Park on Front of 2nd House N. of Lincoln W.L. Casa Loma

B.M. 163.08 "G" in Garage N. of Drive W.L. Casa Loma

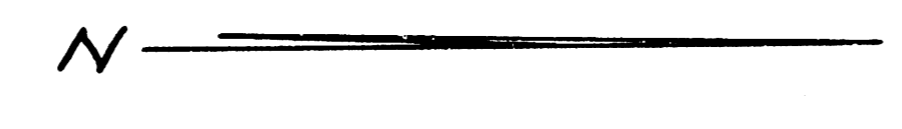






B.M. 163.68 'G' IN GLOBE N. Ch. DEMO.

B.M. 163.95 X IN W. RM. M.H. 6' E. 1/4 S. of S.E. Cor. Jct. Fence Vets Hospital Grounds.



ST. 4000' E. of Mount View

163.85 CORN. DE. 4+55

163.50 CORN. DE. 4+85

CLASS. 400' MEAS. FROM ON E

CRIME

400' E. of Mount View

MEADY

