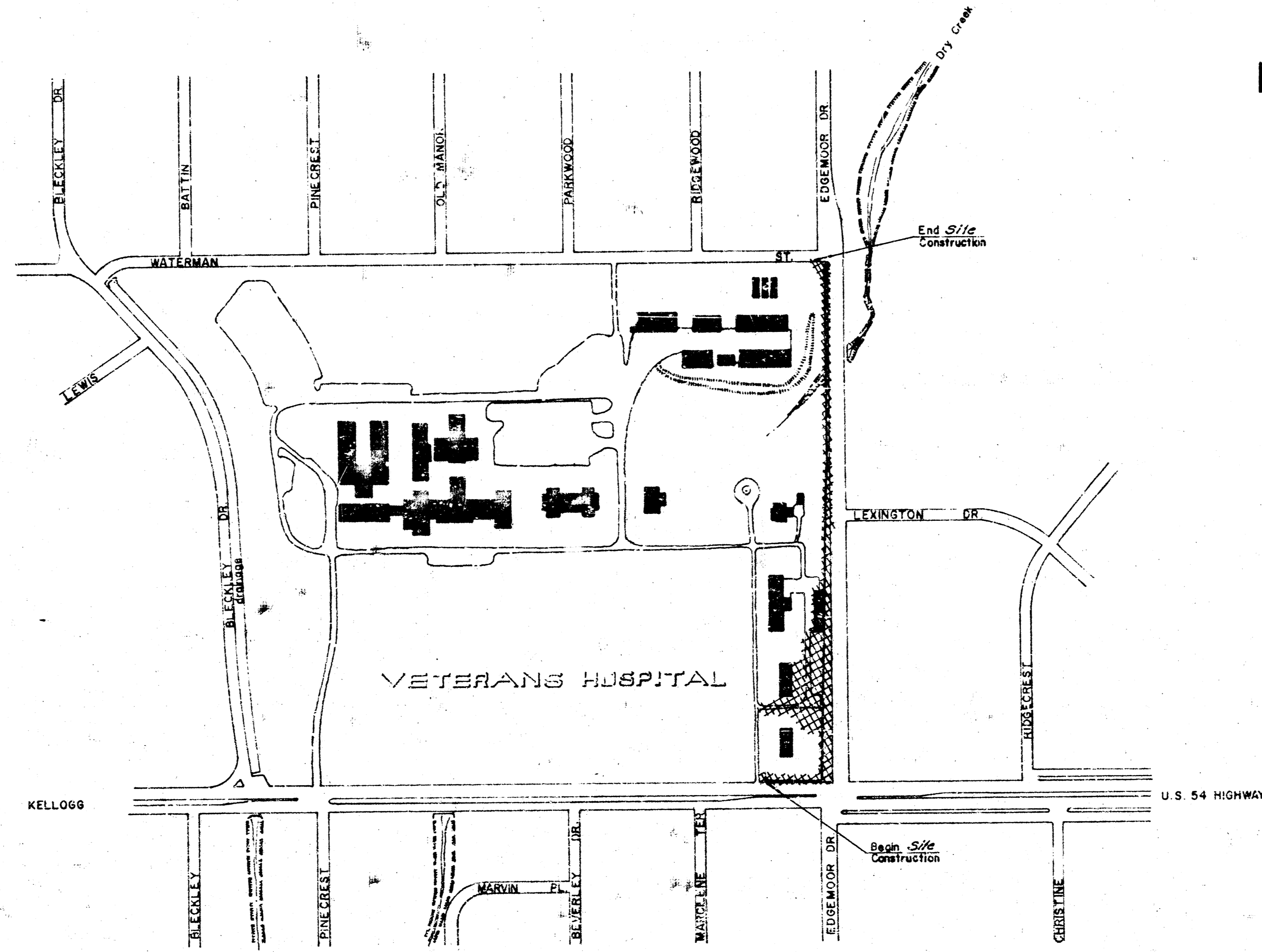


Survey  
 P.S. Socy  
 J.K.  
 Whetzel



- INDEX
- Sheet No.
1. Title and Location
  2. Removal Items
  3. Asphalt Dr and Conc. Walk Plan.
  4. Brick Wall and Ch-Link Fnc. Location
  - 5.
  6. Construction Details
  7. Brick Wall and Car Purl Details

**BILL OF MATERIALS**

NO.	UNIT	DESCRIPTION
50	Lin. Ft.	Combined Curb and Gutter
275	Sq. Ft.	4" Walk
305	Tons	Asphalt
1	Each	Dog Run Complete
10	Each	Concrete Wheel Stops
610	Lin. Ft.	Brick Wall In Place
765	Lin. Ft.	6 Foot Chain-link Fence In Place
20	Lbs.	Grass Seed
35	Cu. Yds.	Backfill
75	Cu. Yds.	Excavation
210	Lin. Ft.	Saw Joint
750	Sq. Yds.	Asphalt Mat Removed
70	Lin. Ft.	Combined Curb & Gutter Removed
760	Sq. Ft.	Walk Removed
5	Each	Large Trees Removed
1	Each	Small Trees Removed
1475	Lin. Ft.	6' Chain-link Fence Removed
1	Each	Existing Structure Removed
1	Each	Dog Run Removed
260	Lin. Ft.	Concrete Curbing Removed
1	Each	Asphalt Complete

THE QUANTITIES SHOWN IN THE "BILL OF MATERIALS" OR ITEMS WHICH ARE INCLUDED IN THE "PAVING SUMMARY" OF THE CONTRACT ARE FOR "INFORMATION PURPOSES ONLY". THE CONTRACTOR MUST SATISFY HIMSELF AS TO THE "QUANTITIES" AND THE ENGINEER ASSUMES NO RESPONSIBILITY FOR THEIR ACCURACY. THE CONTRACTOR WILL HAVE THE FULL RESPONSIBILITY FOR PROVIDING ALL MATERIALS SHOWN ON THE DETAILED PLANS NECESSARY TO COMPLETE THIS PROJECT.

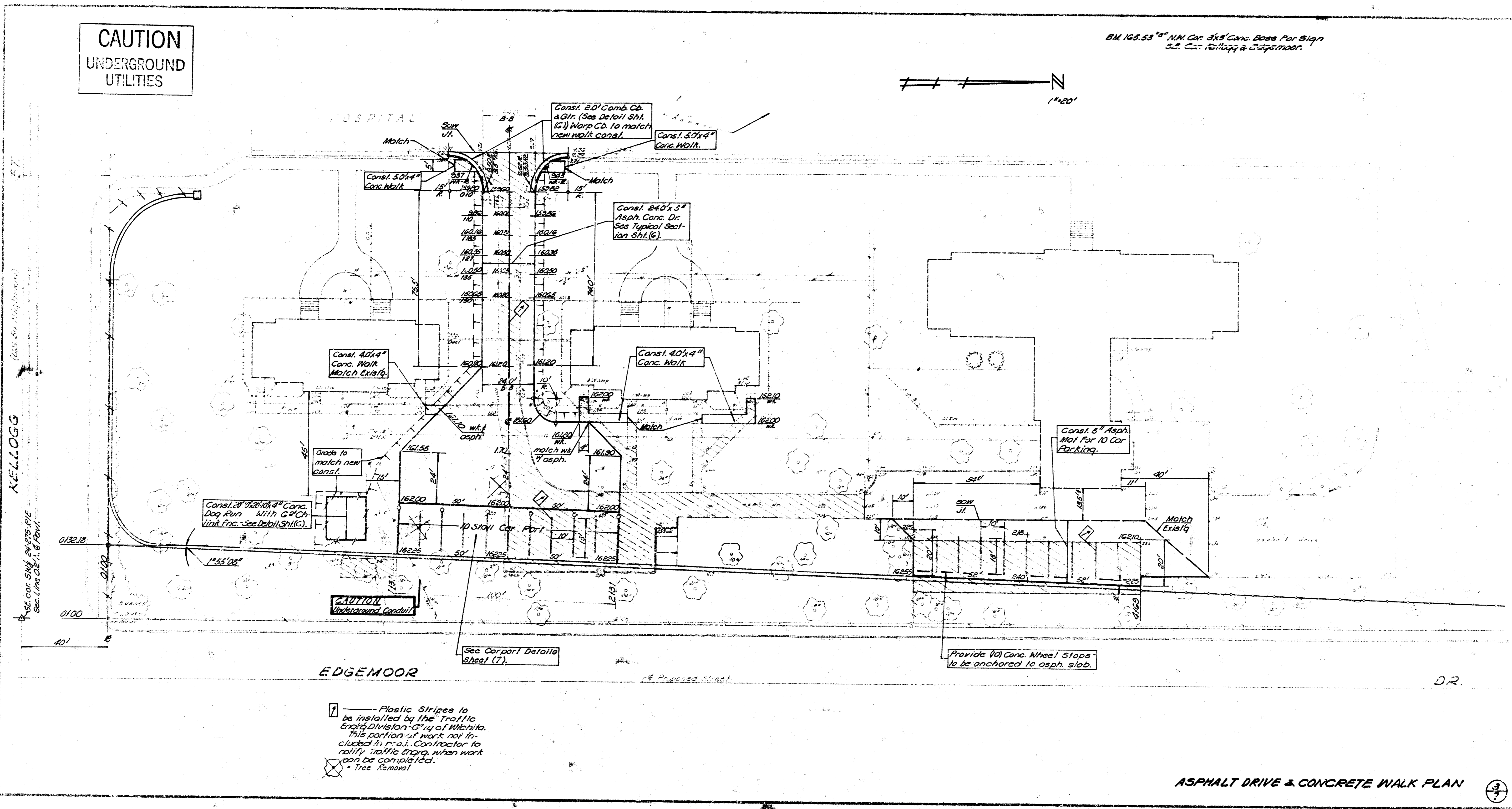
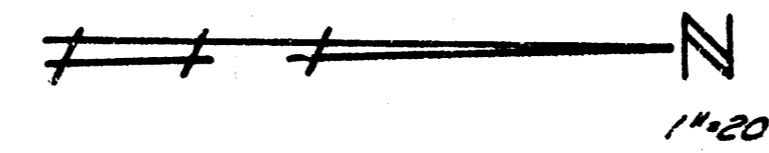
EDGEMOOR DRIVE  
 S.L. ORME STREET to N.L. WATERMAN STREET

**VETERANS ADMINISTRATION SITE CONSTRUCTION**  
 CITY OF WICHITA, KANSAS  
 R.W. Linn City Engineer  
 Date: July 1978 Proj. No. DAKM-572015



CAUTION  
UNDERGROUND  
UTILITIES

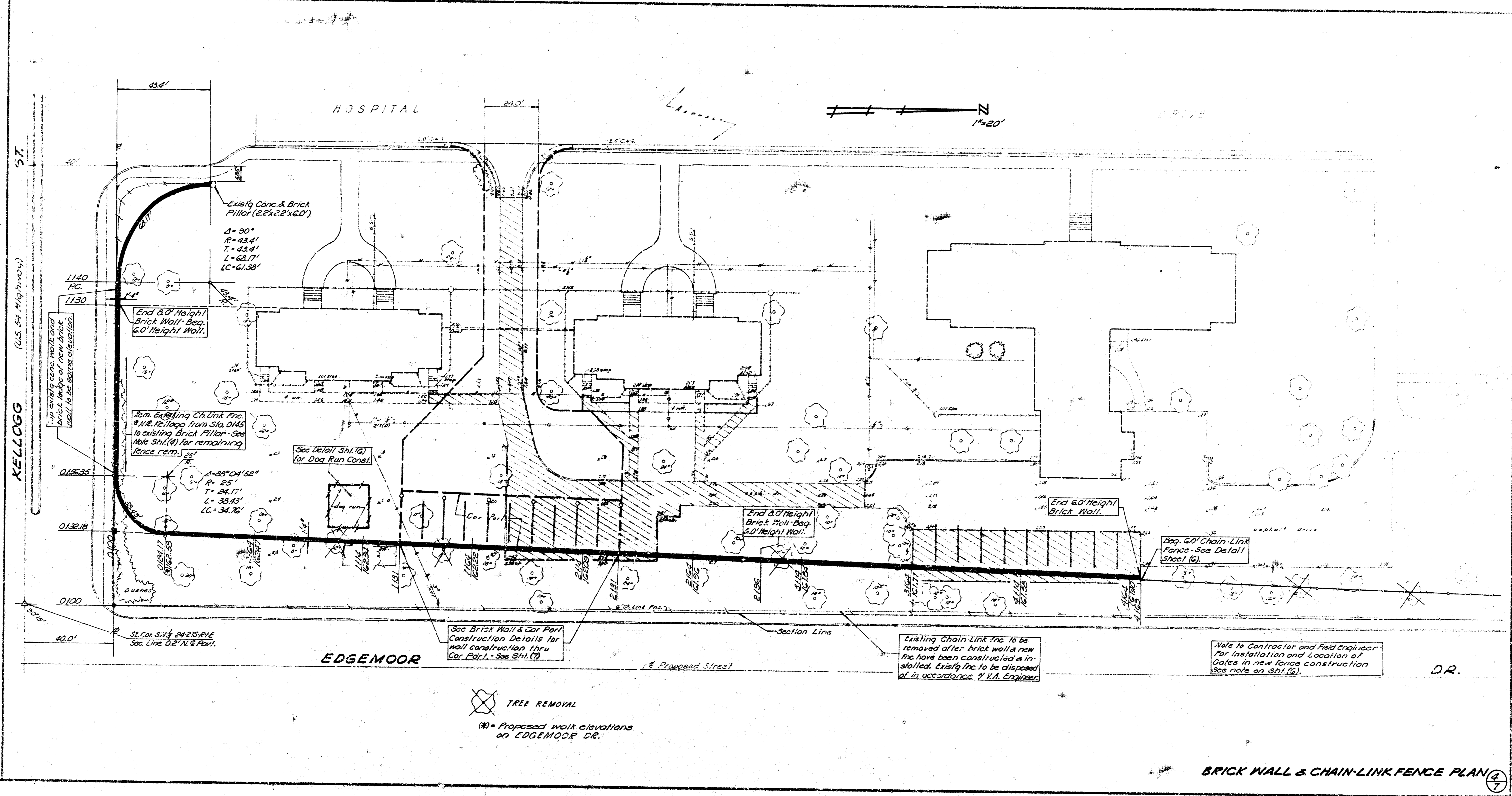
BM 165.53 4" MIN. CON. 3/4" CONC. BASE FOR SIGN  
SEE CON. DETAIL & SCHEDULE



1 Plastic Stripes to be installed by the Traffic Eng'g Division of Wichita. This portion of work not included in price. Contractor to notify Traffic Eng'g when work can be completed.  
X Tree Removal

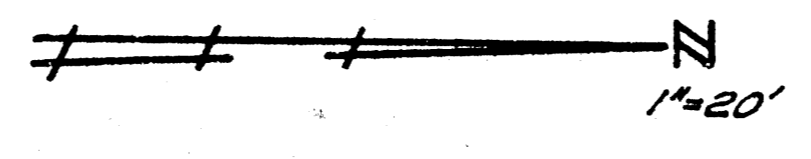
ASPHALT DRIVE & CONCRETE WALK PLAN

3



KELLOGG (1/4 S.W. 1/4 P. 10)

HOSPITAL



KELLOGG

EDGEMOOR

Proposed Street

Section Line

1140  
R.C.

1130

015634

013218

0100

40.0'

Existing Conc. & Brick  
Pillar (22'x22'x60')  
A = 90°  
E = 43.4'  
T = 43.4'  
L = 62.7'  
LC = 61.28'

End 6'0" Height  
Brick Wall - Beg.  
6'0" Height Wall

Rem. Existing Chain-Link Fnc.  
N.E. Kellogg from Sta. 0145  
to existing Brick Pillar - See  
Note SH. (1) for remaining  
fence rem.

See Detail SH. (a)  
for Dog Run Canal

A = 89°04'52"  
R = 25'  
T = 24.11'  
L = 33.93'  
LC = 34.76'

End 6'0" Height  
Brick Wall - Beg.  
6'0" Height Wall

End 6'0" Height  
Brick Wall

6'0" Chain-Link  
Fence - See Detail  
Sheet (g)

St. Cor. SH. 24 215' N.E.  
Sec. Line 0.2' N. & 0.4' E.

See BRICK WALL & CHAIN-LINK  
CONSTRUCTION DETAILS for  
wall construction thru  
Cor. Par. 1 - See SH. (7)

Existing Chain-Link Fnc. to be  
removed after brick wall is  
constructed & installed. Existing  
fnc. to be disposed of in accordance  
w/ V.A. Engineer.

Note to Contractor and Field Engineer  
for Installation and Location of  
Gates in new fence construction  
See note on SH. (g)

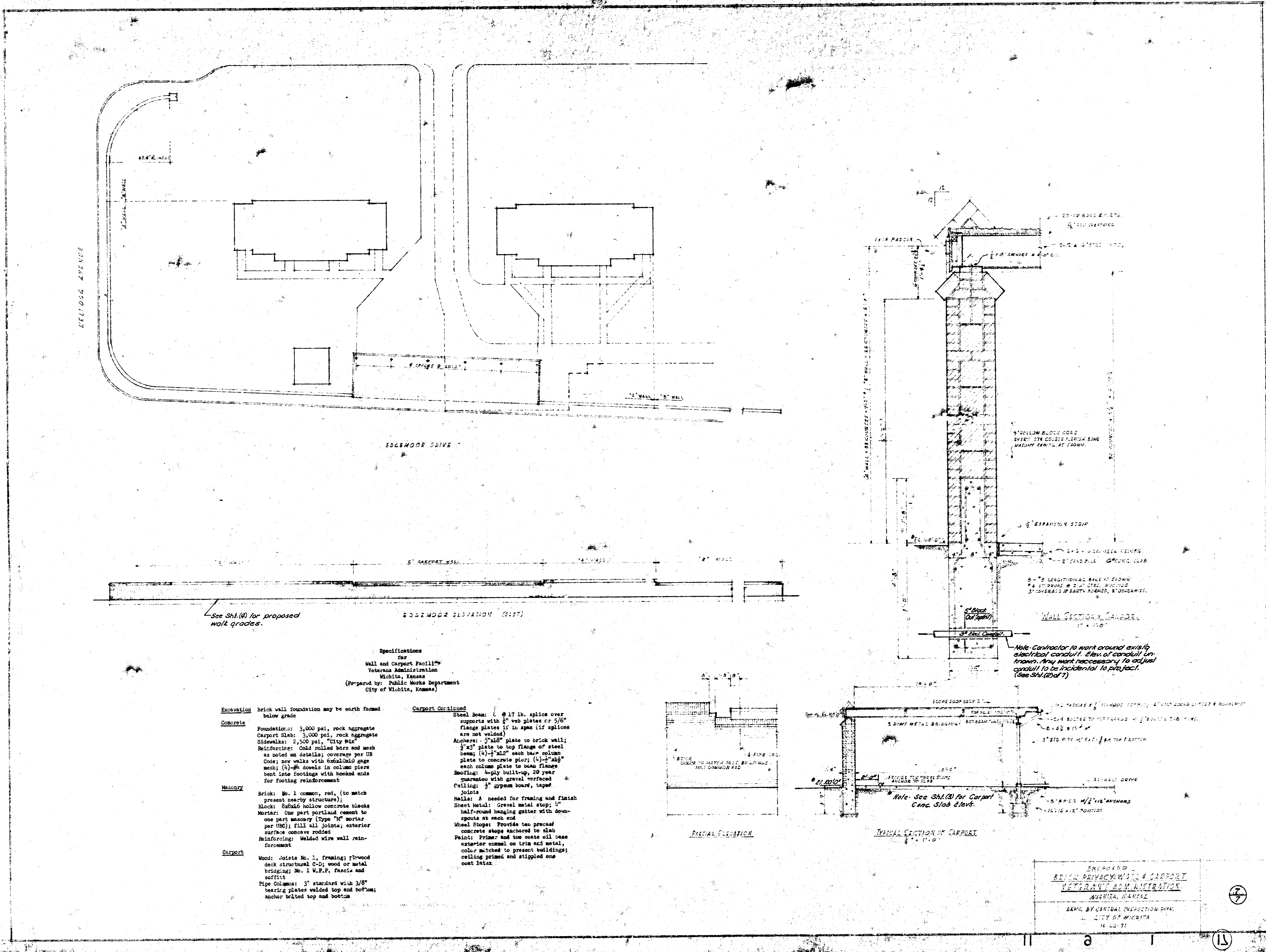
D.R.

⊗ TREE REMOVAL  
(\*) = Proposed walk elevations  
on EDGEMOOR DR.

BRICK WALL & CHAIN-LINK FENCE PLAN (1/2)







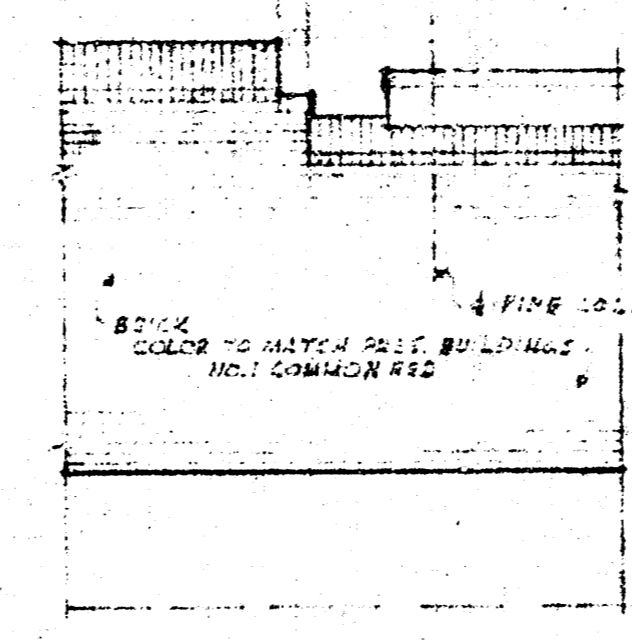
See SH. (A) for proposed  
walk grades.

EDGEWOOD ELEVATION (EXIST)

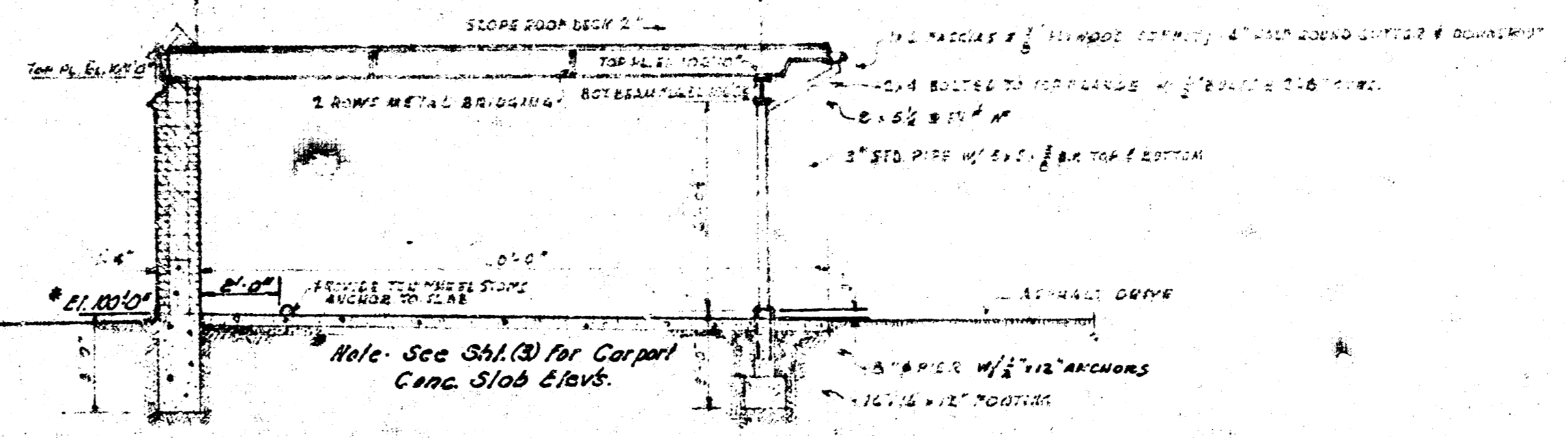
Specifications  
for  
Wall and Carport Facility  
Veterans Administration  
Wichita, Kansas  
(Prepared by: Public Works Department  
City of Wichita, Kansas)

- Excavation** Brick wall foundation may be earth formed below grade
- Concrete** Foundation: 3,000 psi, rock aggregate  
Carport Slab: 3,000 psi, rock aggregate  
Sidewalk: 2,500 psi, "City Mix"  
Reinforcing: Cold rolled bars and mesh as noted on details; coverage per UB Code; see walls with galvanized pipe mesh; (4)-#4 dowels in column piers bent into footings with hooked ends for footing reinforcement
- Masonry** Brick: No. 1 common, red, (to match present nearby structure);  
Block: 8x8x16 hollow concrete blocks  
Mortar: One part portland cement to one part masonry (Type "M" mortar per USC); fill all joints; exterior surface concave rounded  
Reinforcing: Welded wire wall reinforcement
- Carport** Wood: Joists No. 1, framing; plywood deck structural C-D; wood or metal bridging; No. 1 W.P.F. fascia and soffits  
Pipe Columns: 3" standard with 3/8" bearing plates welded top and bottom; anchor bolted top and bottom

- Carport Continued**
- Steel beam: 6 @ 17 lb. splices over supports with 1" web plates or 5/8" flange plates if in span (if splices are not welded)
- Anchor: 2"x3" plate to brick wall; 3/4"x3" plate to top flange of steel beam; (4)-#4 each base column plate to concrete pier; (4)-#4 each column plate to beam flange
- Roofing: 4-ply built-up, 20 year guarantee with gravel surfaced
- Ceiling: 3" gypsum board, taped joints
- Walls: A needed for framing and finish
- Sheet metal: Gravel metal stop; 3" half-round hanging gutter with downspout at each end
- Wheel Stops: Provide ten precast concrete stops anchored to slab
- Paint: Primer and two coats oil base exterior enamel on trim and metal; color matched to present buildings; ceiling primer and stippled one coat latex



DETAIL ELEVATION



TYPICAL SECTION OF CARPORT

PREPARED BY  
BRICK DRIVEWAY WALL & CARPORT  
VETERANS ADMINISTRATION  
WICHITA, KANSAS  
DRAWN BY CENTRAL INSPECTION DIV.  
CITY OF WICHITA  
16 JUN 71