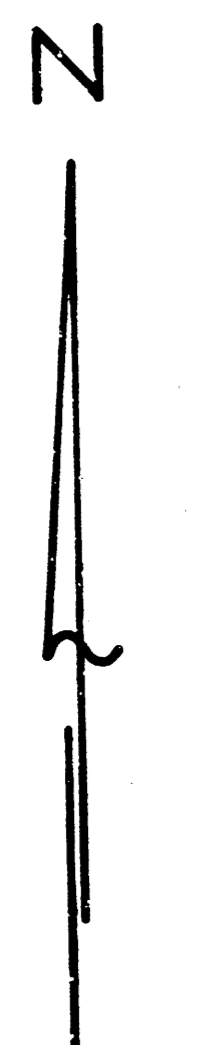


STREET IMPROVEMENTS FOR EDGEMOOR

NOTE: ONE NORTH BOUND AND ONE SOUTH BOUND LANE OF TRAFFIC SHALL BE CARRIED THROUGH CONSTRUCTION.

INCLUDING RIGHT TURN LANE, LEFT TURN LANE, AND MAJOR
ENTRANCE TO VETERANS ADMINISTRATION CENTER

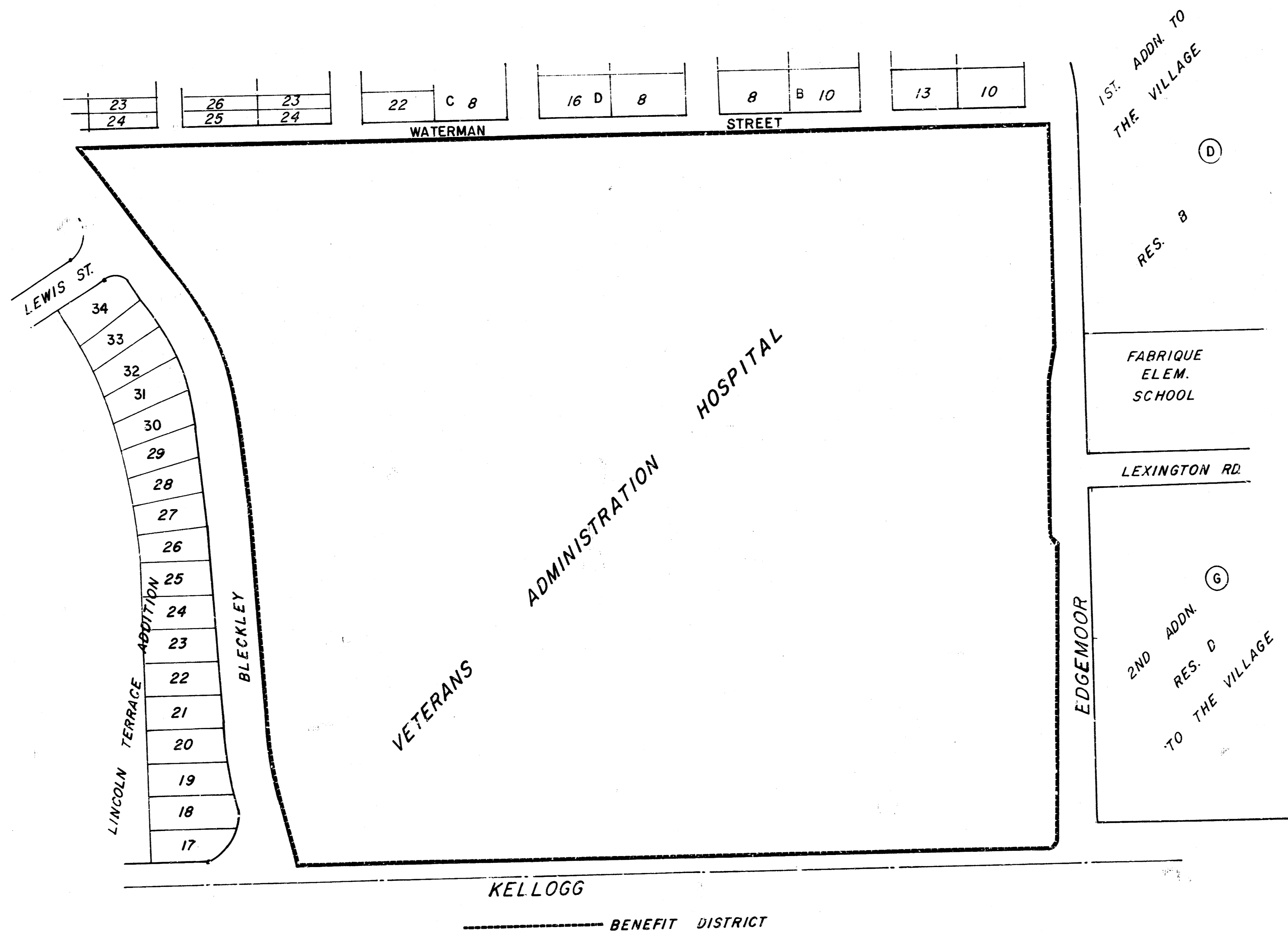
PROJECT NUMBER
472-76-245-81467-000-000-001



1" = 150'

INDEX

- 1. Title & Benefit District Map
- 2. Typical Sections
- 3-4. Street Plan
- 5. Incidental Drainage
- 6. Type 1A Inlet
- 7-9. Earthwork Sections.



GENERAL NOTES:

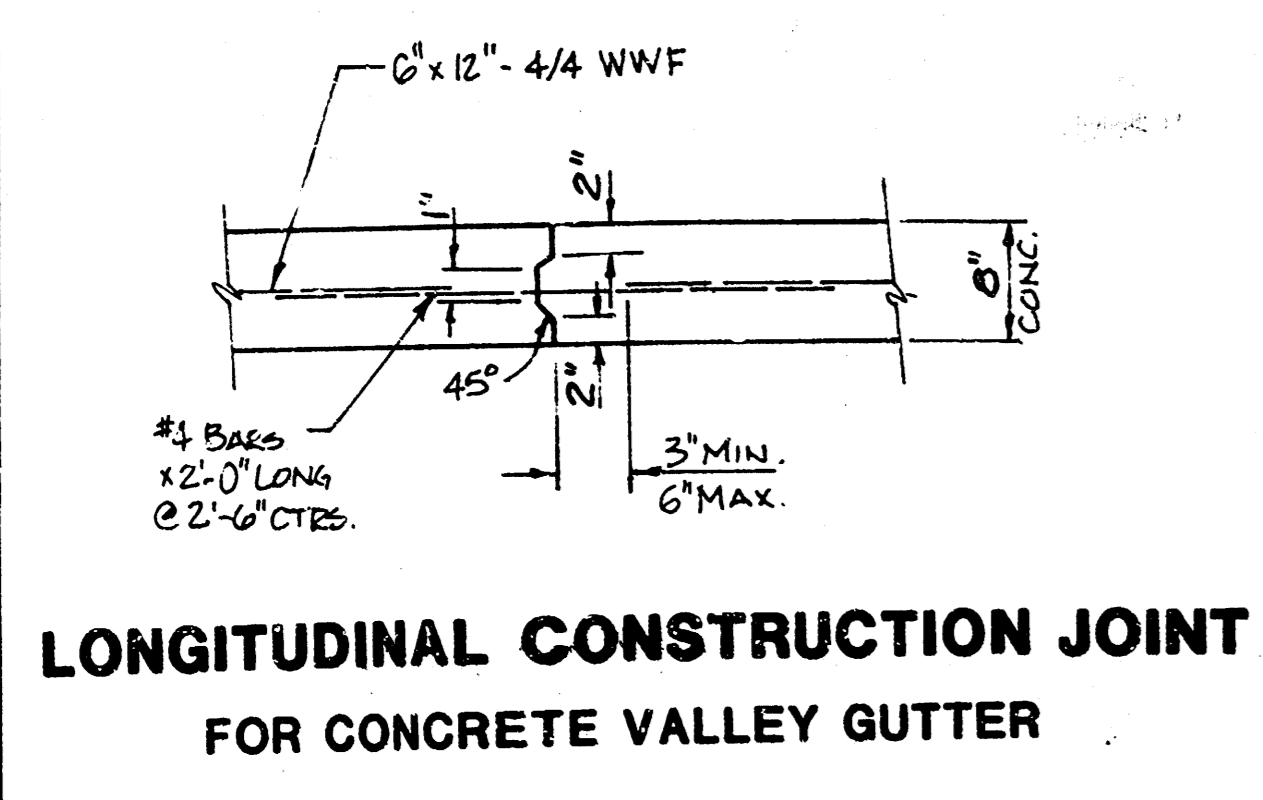
- 1. The Contractor shall be responsible for preserving property irons. Any such irons disturbed by his operations shall be reestablished by a licensed land surveyor or professional engineer at the Contractor's expense.
- 2. Contractor shall make arrangements for relocation of the water main prior to any construction. Contact the Wichita Water Dept. at 268-4555.
- 3. Construction of this project shall be coordinated with the private project for drive improvements on Veterans Administration Center property. Contractor shall contact Marvin Atwood at 685-2221.
- 4. All pavement markings shall be applied by the City of Wichita Dept. of Operations and Maintenance.

CITY OF WICHITA, KS
MICHAEL E. LINDEBAK
CITY ENGINEER

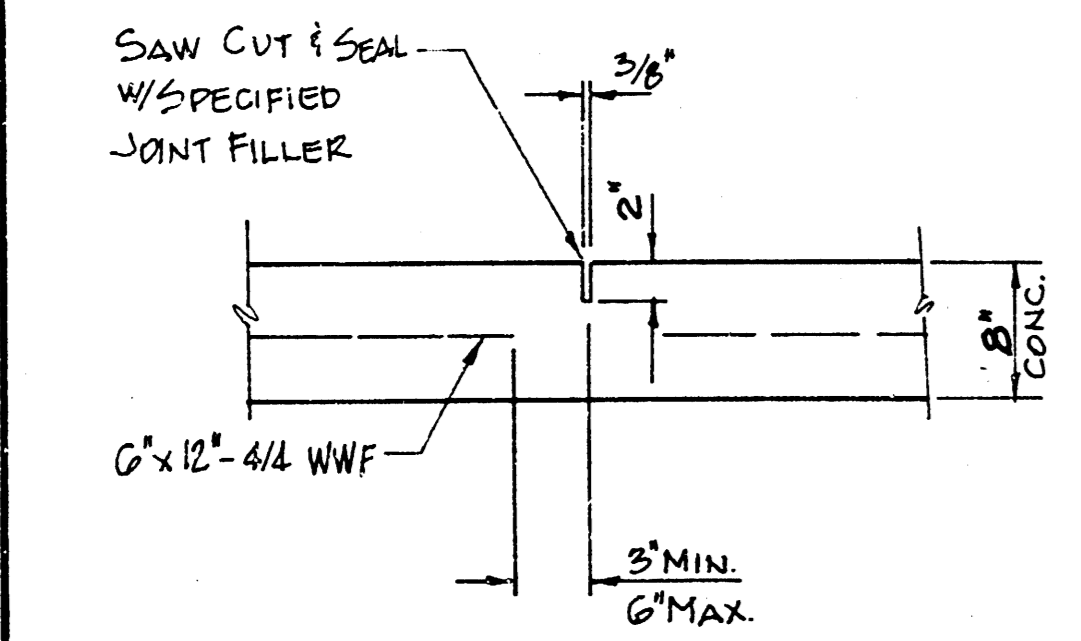


REVISED STORM SEWER TO CLEAR EXIST. GAS LINE 3-20-85

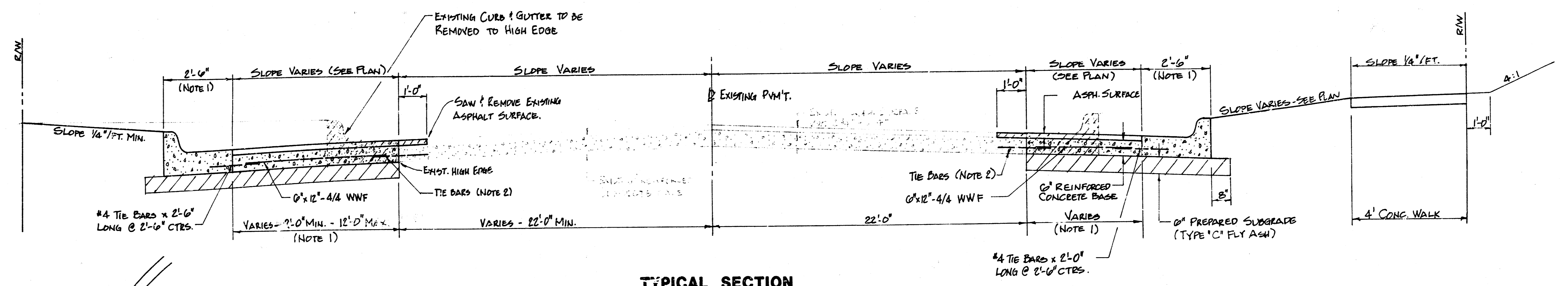
BAUGHMAN COMPANY, P.A.
SURVEYING & ENGINEERING
316.262-7271 • 330 LAURA • WICHITA, KANSAS 67211



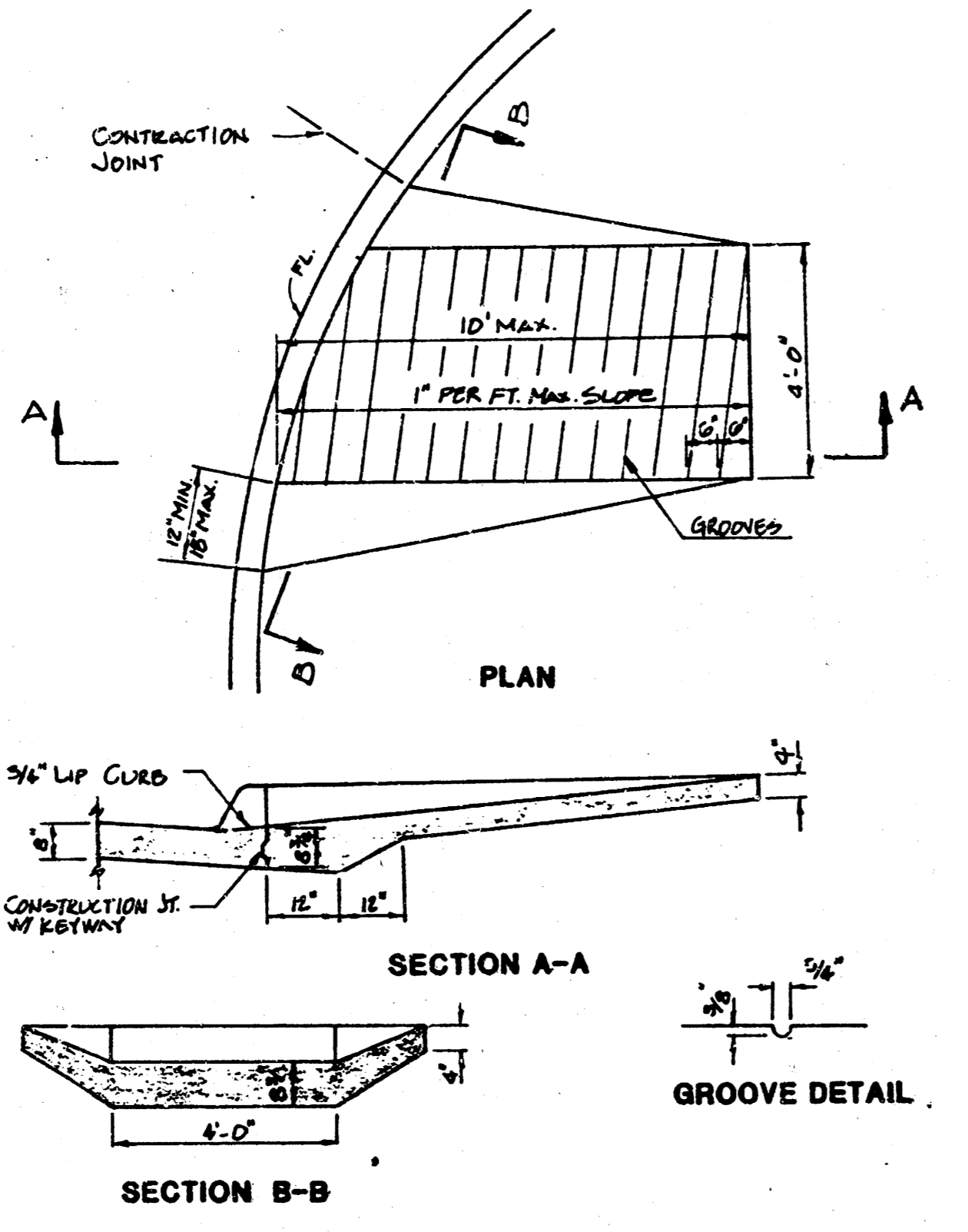
LONGITUDINAL CONSTRUCTION JOINT FOR CONCRETE VALLEY GUTTER



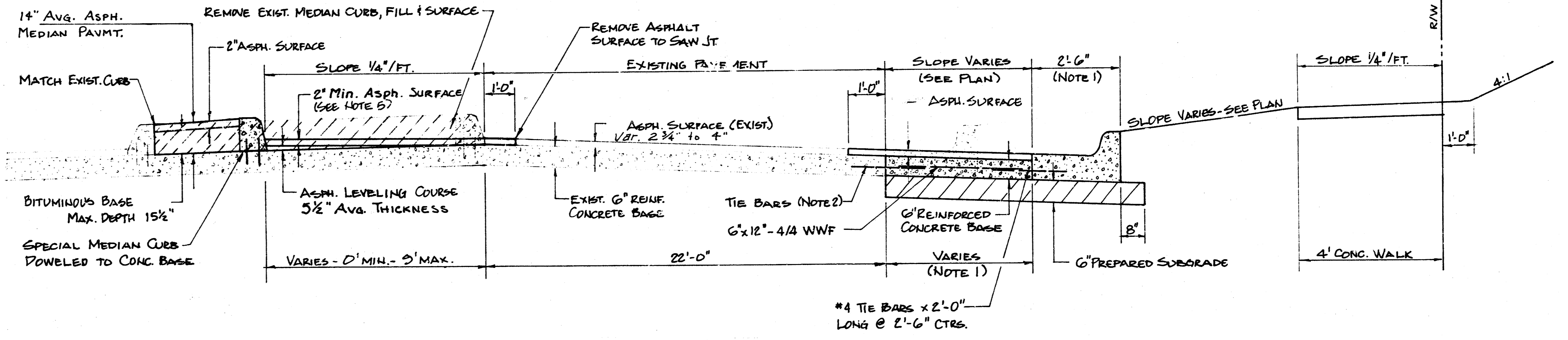
CONTRACTION JOINT FOR CONCRETE VALLEY GUTTER



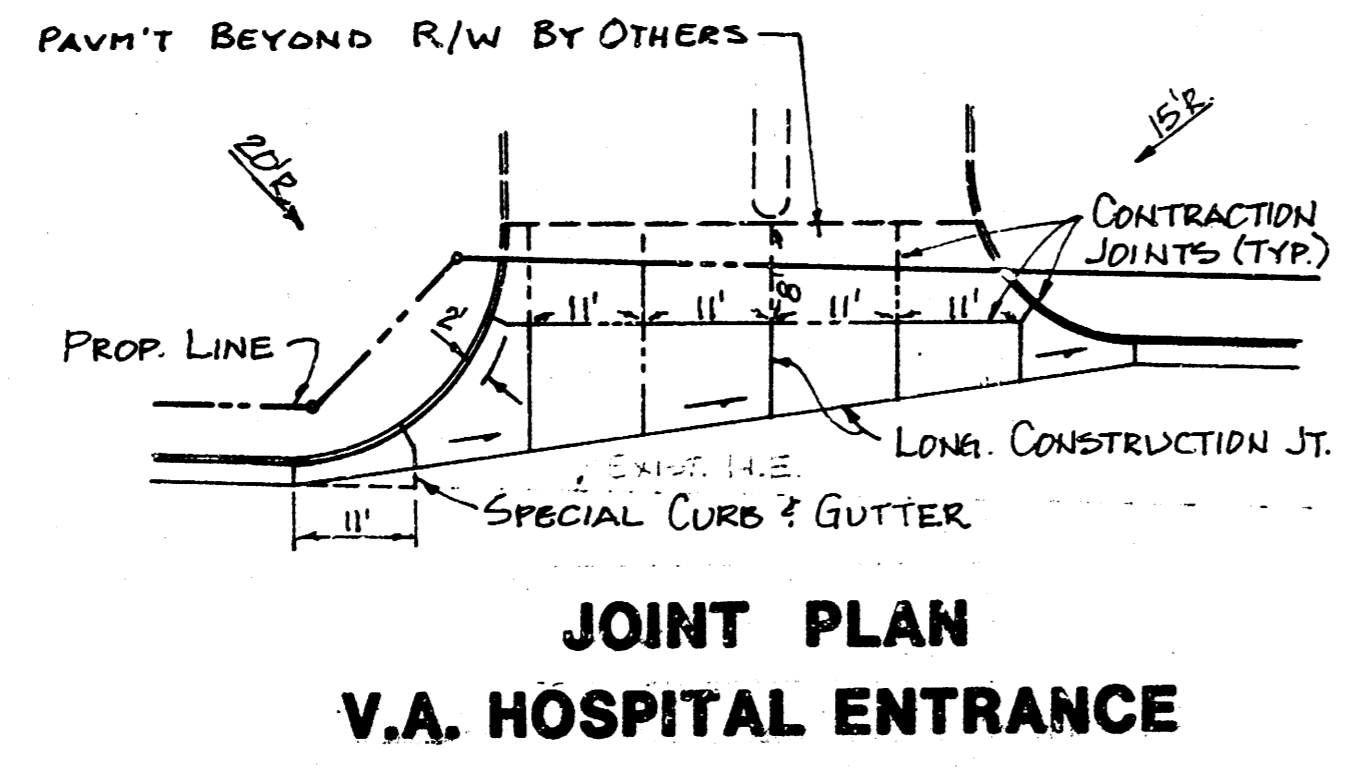
TYPICAL SECTION STA. 5+63 TO 10+00



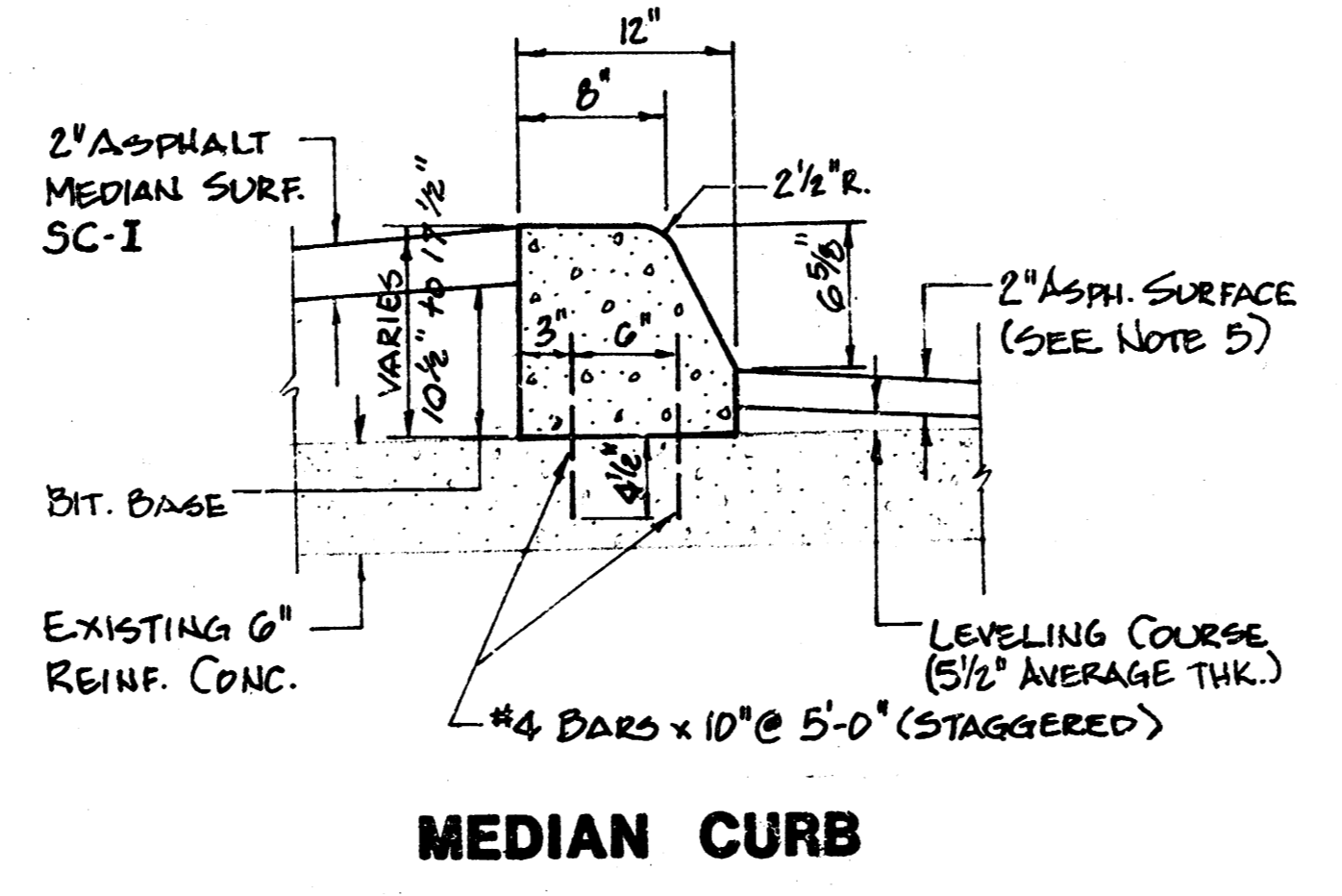
WHEELCHAIR RAMP



TYPICAL SECTION STA. 2+20 TO 5+63

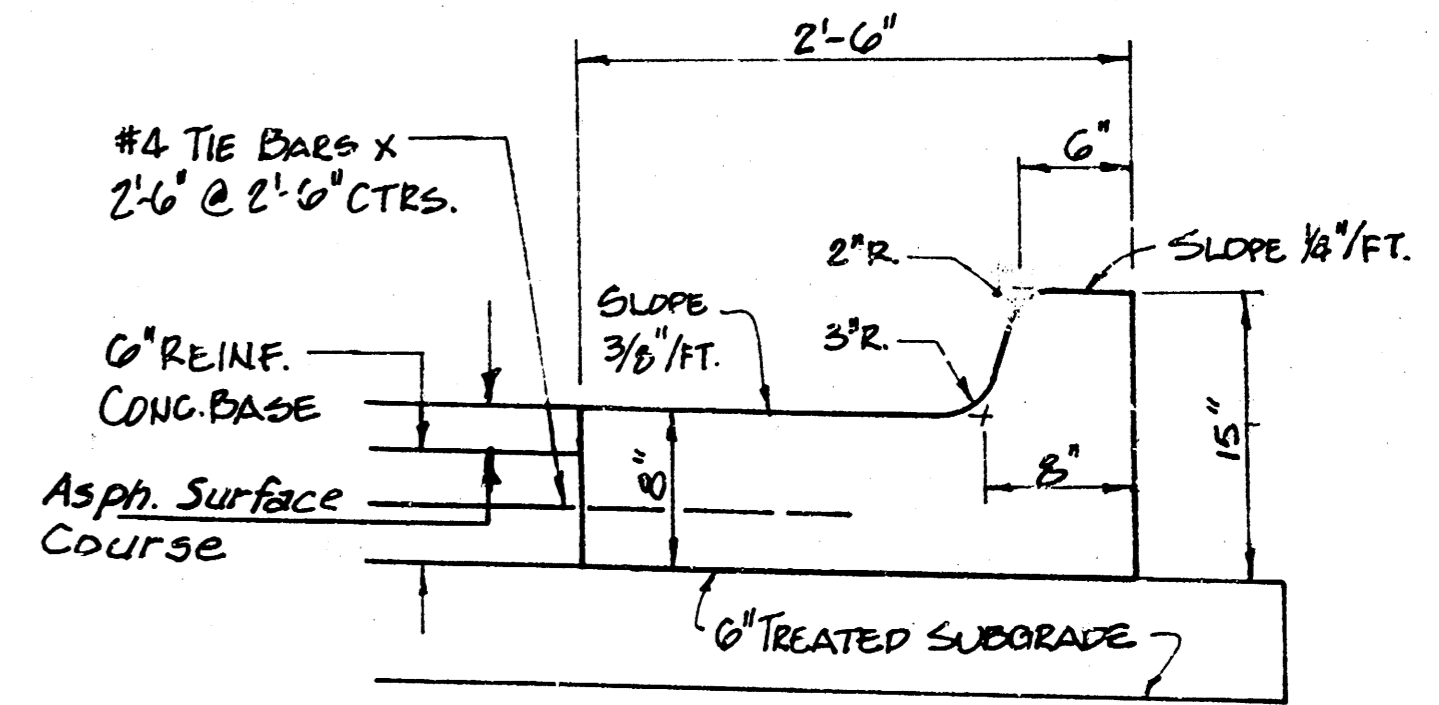


JOINT PLAN V.A. HOSPITAL ENTRANCE

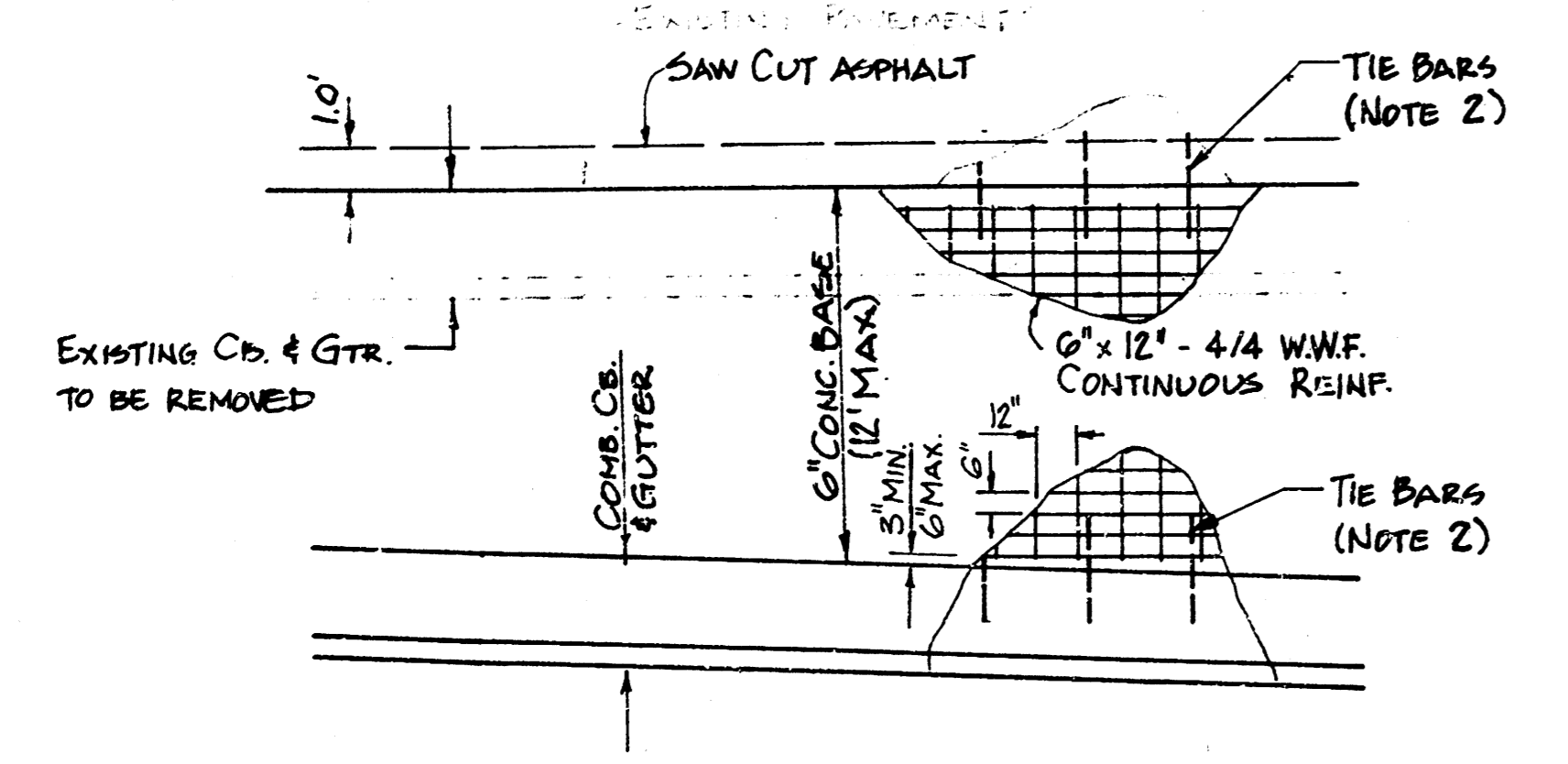


MEDIAN CURB

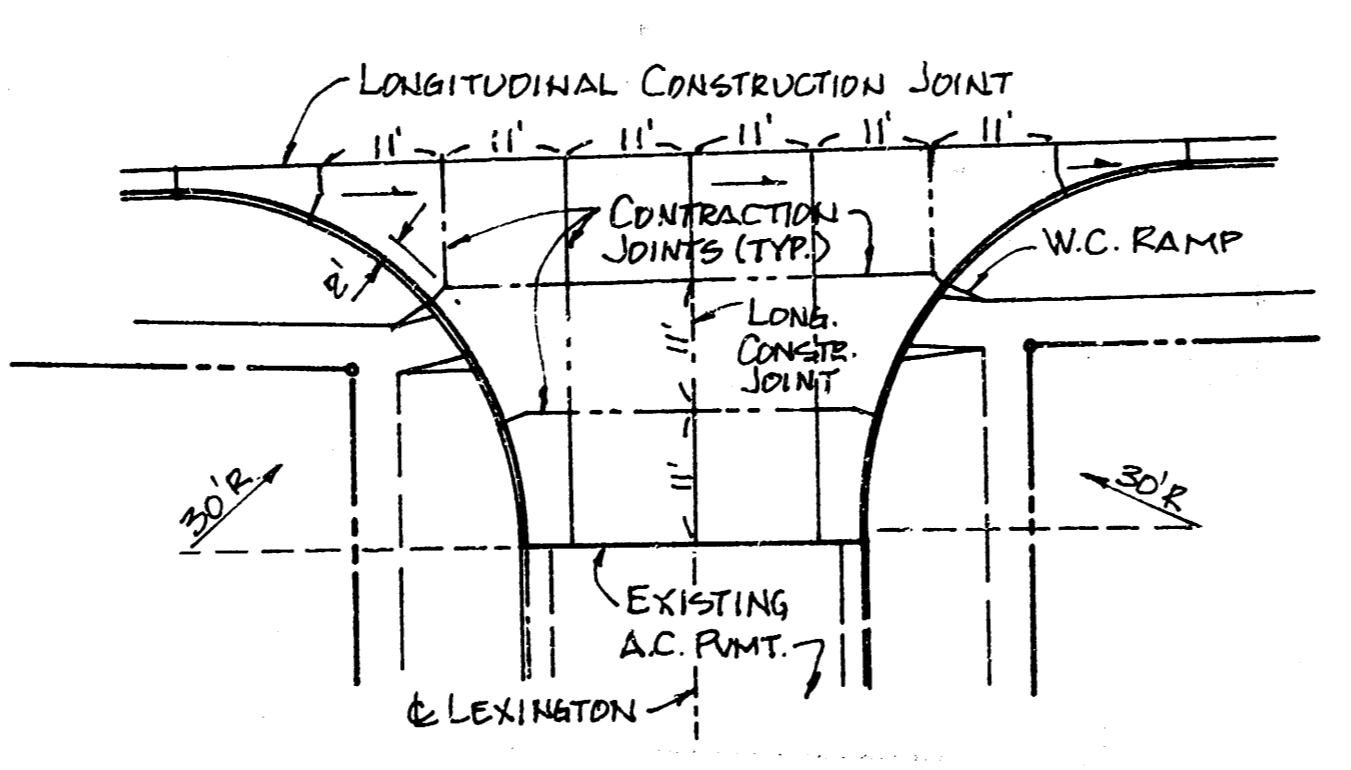
- NOTES:**
- Where additional pavement width would be less than 2.5', Special Combined Curb & Gutter shall be used (to be paid as I.P. Special Combined Curb & Gutter). See Street Plan for locations.
 - Use existing tie bars where available. Where bars are not present, drill & grout #5 bars x 24" long @ 4'0" ctrs., 12" into existing concrete (to be incidental to concrete pavement).
 - All concrete surfaces to receive asphaltic concrete surfacing shall be coated with SS 1H Asphalt Emulsion.
 - New and existing asphalt pavement surfaces shall be coated with a slurry seal. See Note, Sheet 3.
 - Asphalt surface to be minimum of 2" thick. Additional required thickness shall be applied in leveling courses using base mix. Leveling course to be incidental to sq. yds. Asphalt Surface.



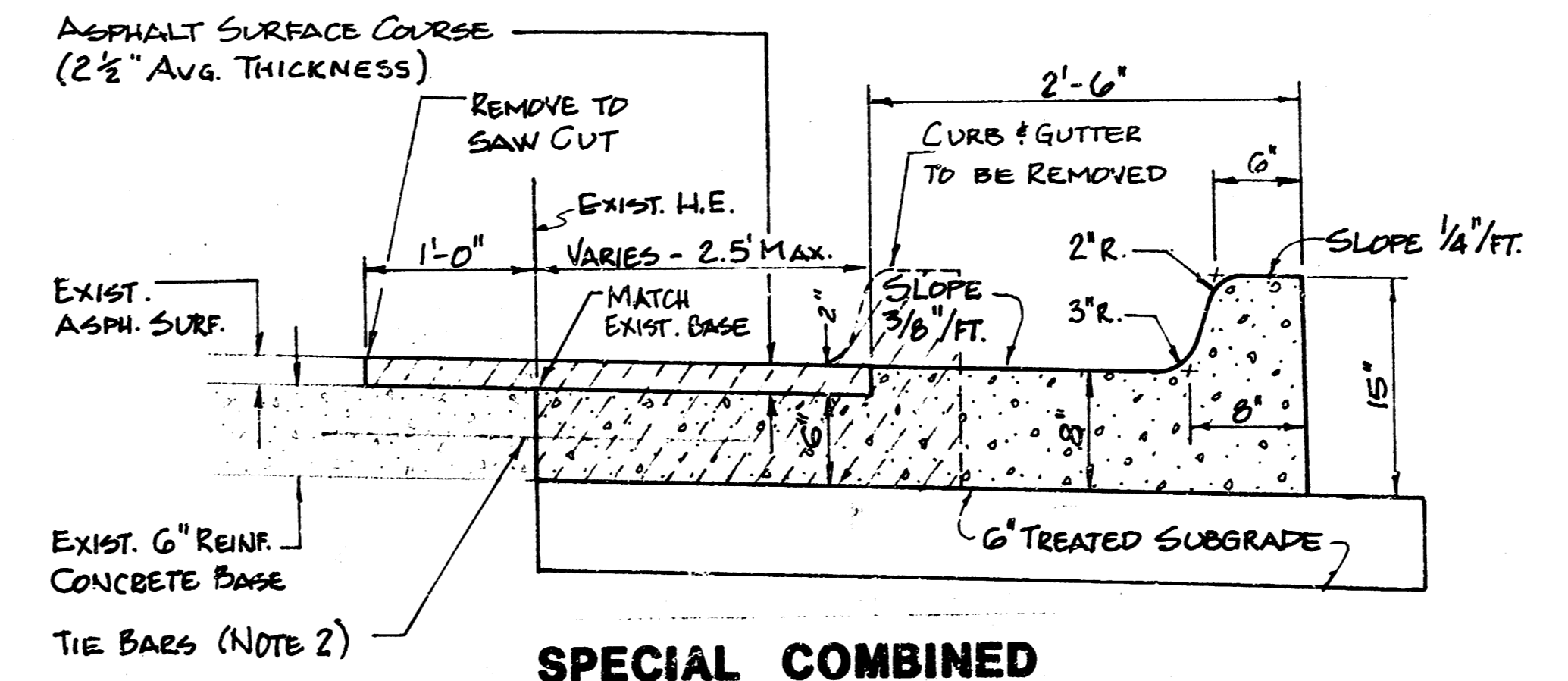
STANDARD COMBINED CURB AND GUTTER



SLAB REINFORCEMENT PLAN



JOINT PLAN LEXINGTON



SPECIAL COMBINED CURB AND GUTTER

TYPICAL SECTIONS

EDGEMOOR STREET IMPROVEMENTS

CITY OF WICHITA, KANSAS

Proj. no. 472-76-245-81467-000-000-001

BAUGHMAN COMPANY, P.A.

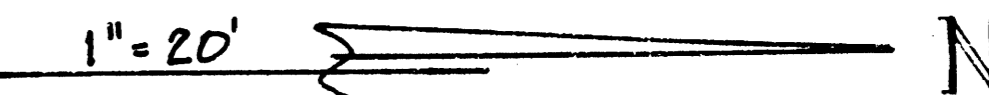
SURVEYING & ENGINEERING

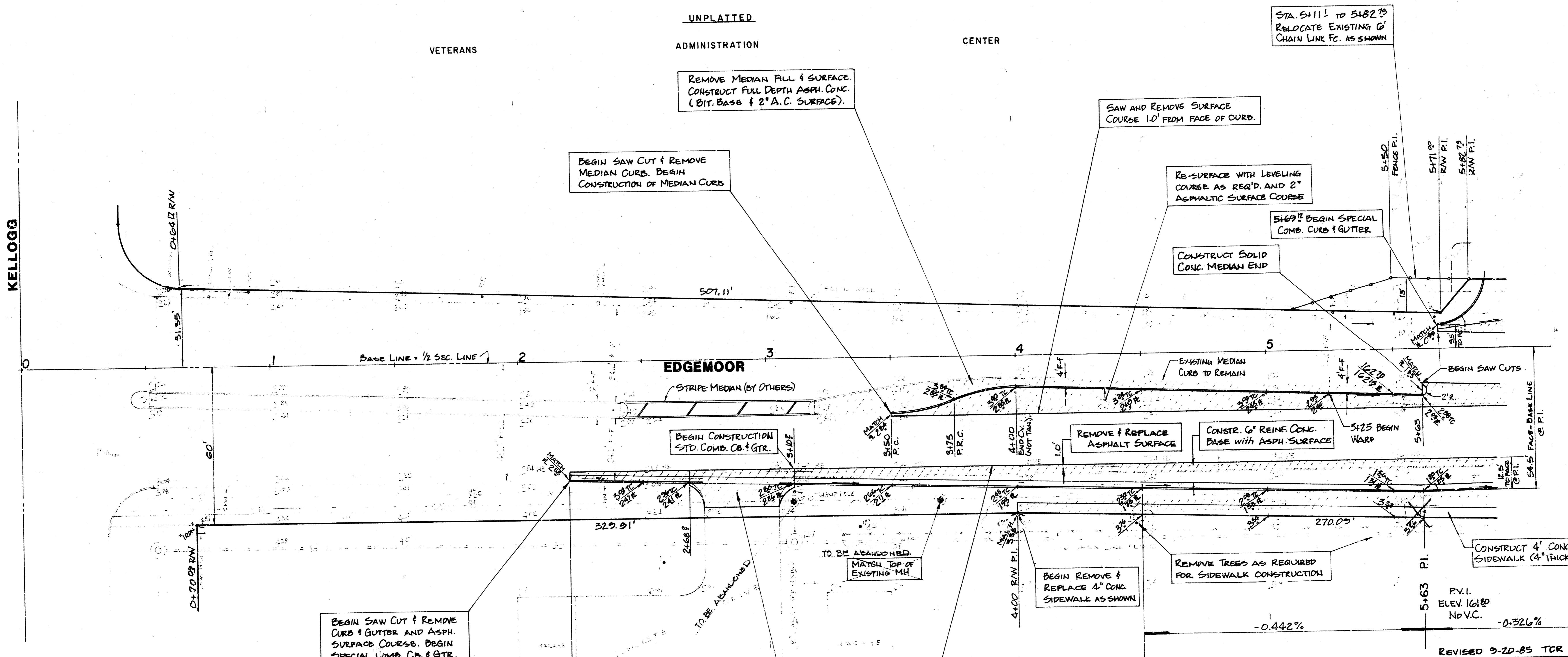
316/262-7271 • 330 LAURA • WICHITA, KANSAS 67211

BENCH MARK
STANDARD DISC ON E. HEADWALL
R.C.B.C @ STA. 11+00 ±, ELEV. 1347.35 MSL

NOTE: APPLY SLURRY SEAL OVER ASPHALT SURFACE FROM STA. 5+03 TO 10+00 ON SOUTHBOUND LANES, AND FROM 2+20 TO 10+00 ON NORTHBOUND LANES. SEAL COAT SHALL EXTEND FROM HIGH EDGE TO HIGH EDGE AND SHALL COVER ALL EXISTING PAVEMENT MARKINGS.

STATION	CURVE POINT	OFFSET FROM R.L.
3+50	P.C.	21.30' RT.
3+62.5	-	20.26' RT.
3+75	P.R.C.	17.05' RT.
3+87.5	-	15.84' RT.
4+00	END (NOT TANA)	12.80' RT.

1" = 20'  N

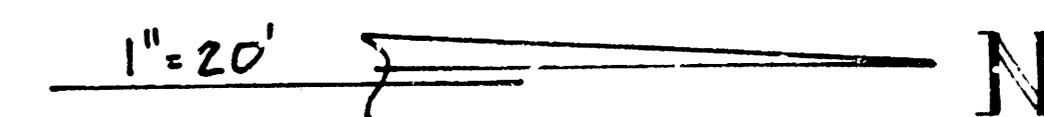


EARTHWORK QUANTITIES

Excavation	455 Cu. Yds.
+108 45	
Subgrade Stabilization	1500 Sq. Yds.
Manipulation	

P.V.I. ELEV. 162.56 No V.C. **RESERVE D** **2nd ADD. TO THE VILLAGE** **BLOCK G** **4+50** P.V.I. ELEV. 162.30 No V.C.

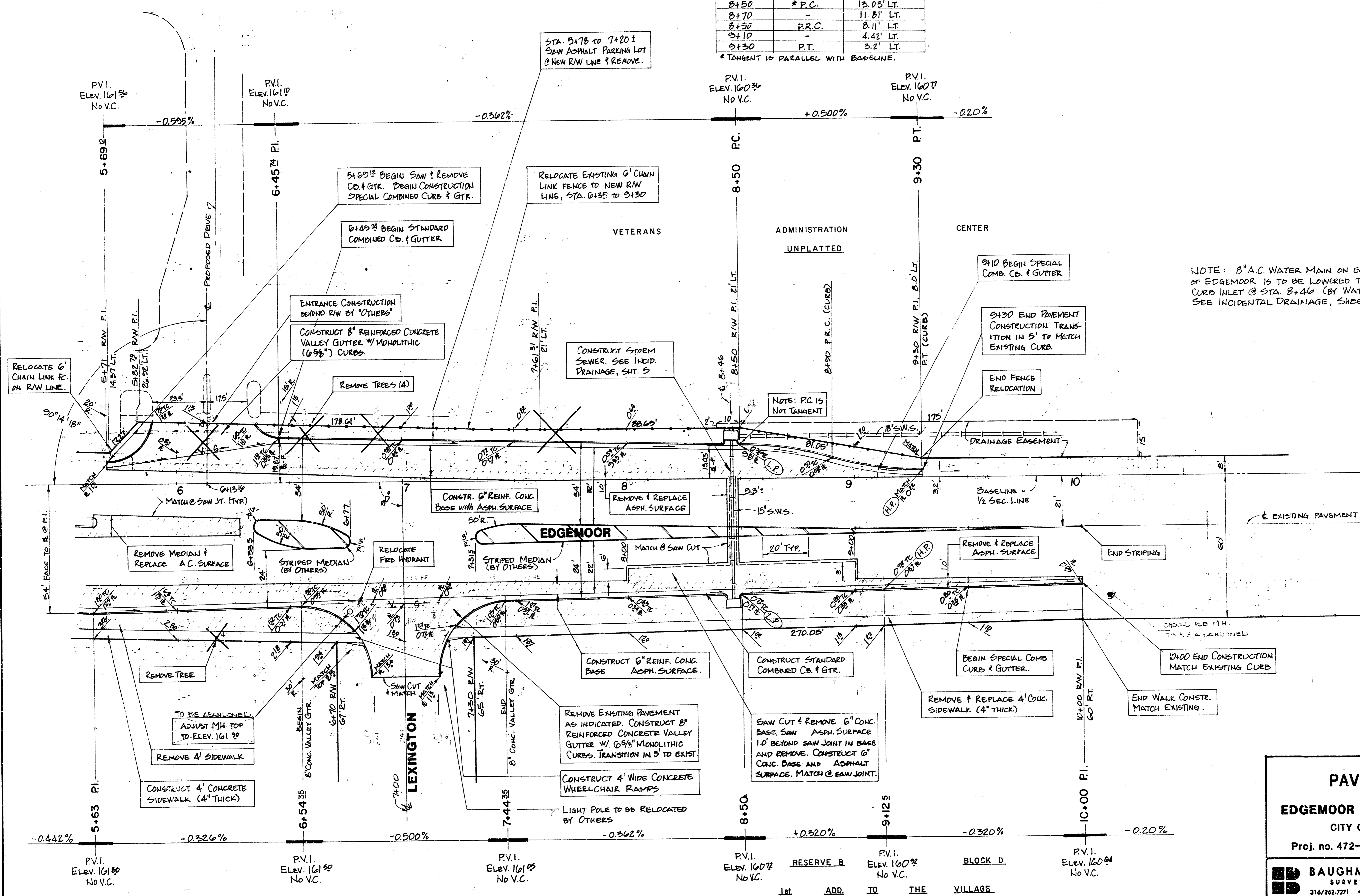
PAVEMENT PLAN
EDGE MOOR STREET IMPROVEMENTS
 CITY OF WICHITA, KANSAS
 Proj. no. 472-76-245-81467-000-000-001
BAUGHMAN COMPANY, P.A.
 SURVEYING & ENGINEERING
 316/262-7271 • 330 LAURA • WICHITA, KANSAS 67211



CURVE DATA FOR WEST CURB
 BASED ON FACE OF CURB, OFFSETS FROM BASELINE
 R=165.00' Δ=14°01'27" (BOTH CURVES)

STATION	CURVE POINT	OFFSET FROM #
8+50	* P.C.	13.03' LT.
8+70	-	11.81' LT.
8+90	P.R.C.	8.11' LT.
9+10	-	4.42' LT.
9+30	P.T.	3.2' LT.

* TANGENT IS PARALLEL WITH BASELINE.



NOTE: 8" A.C. WATER MAIN ON EAST SIDE OF EDGEMOOR IS TO BE LOWERED TO CLEAR CURB INLET @ STA. 8+40 (BY WATER DEPT.). SEE INCIDENTAL DRAINAGE, SHEET 5.

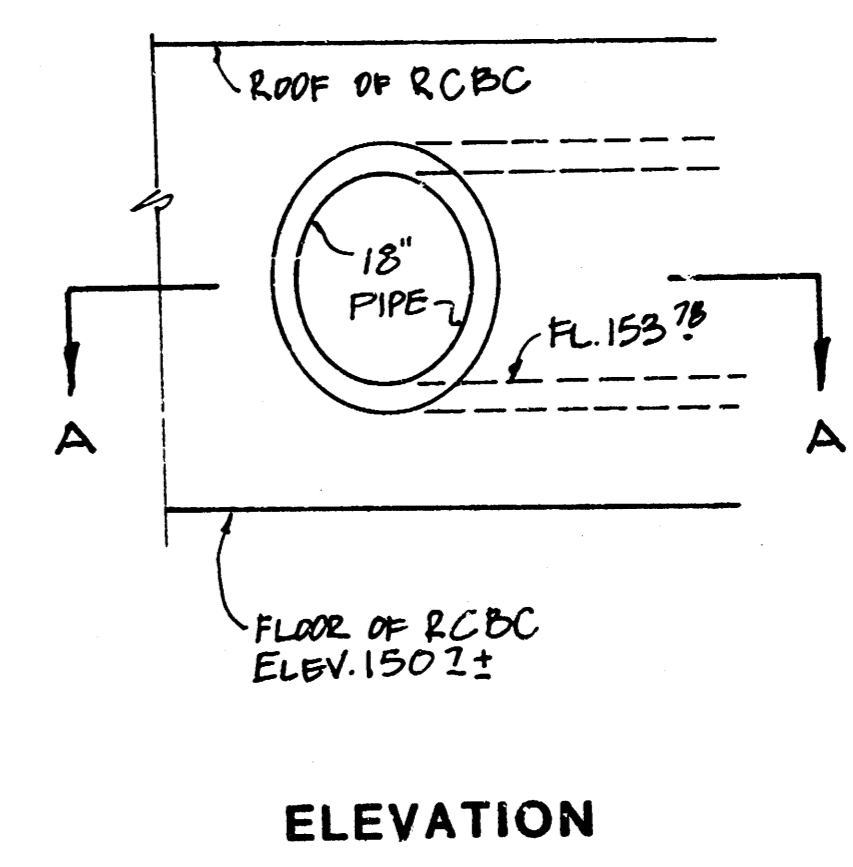
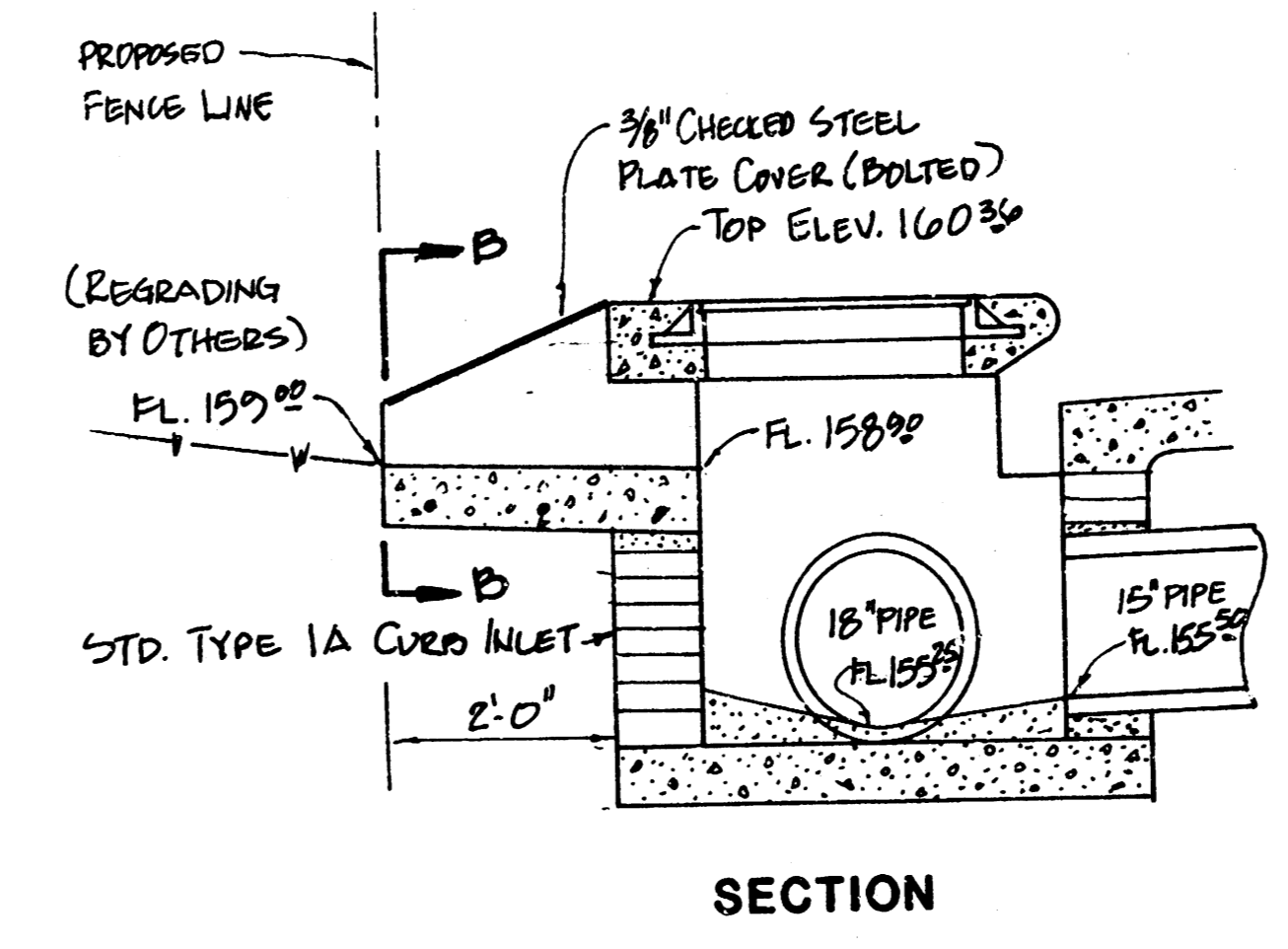
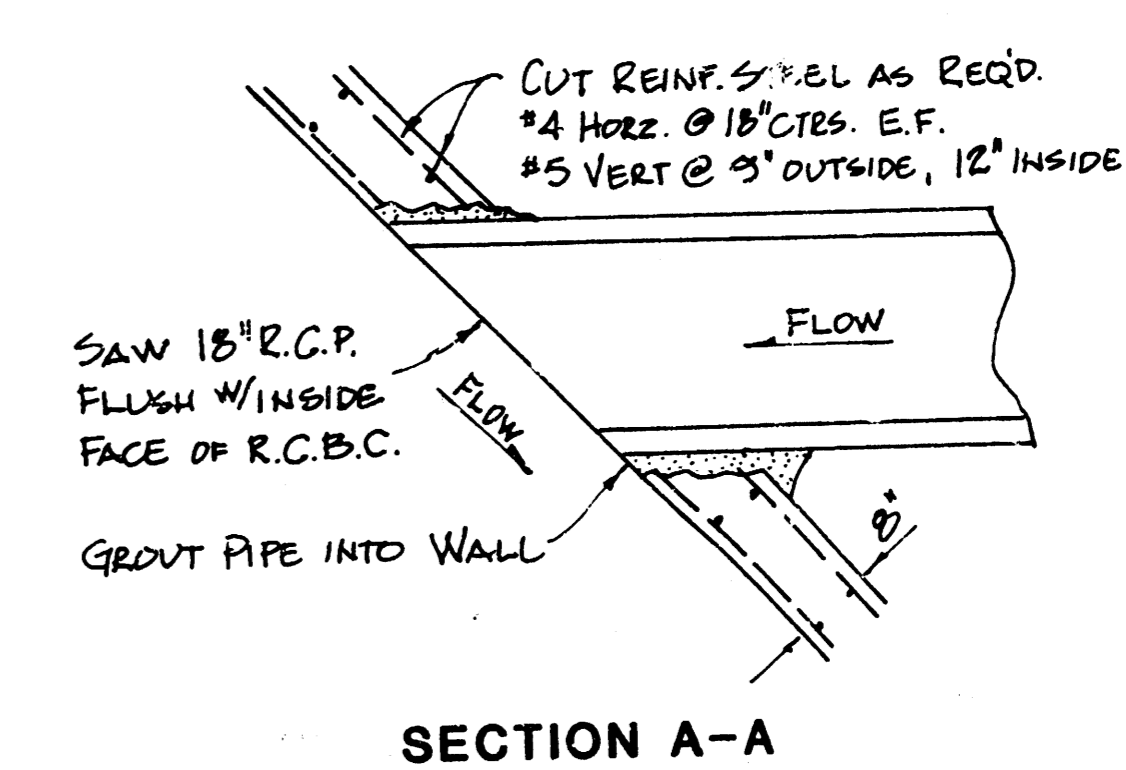
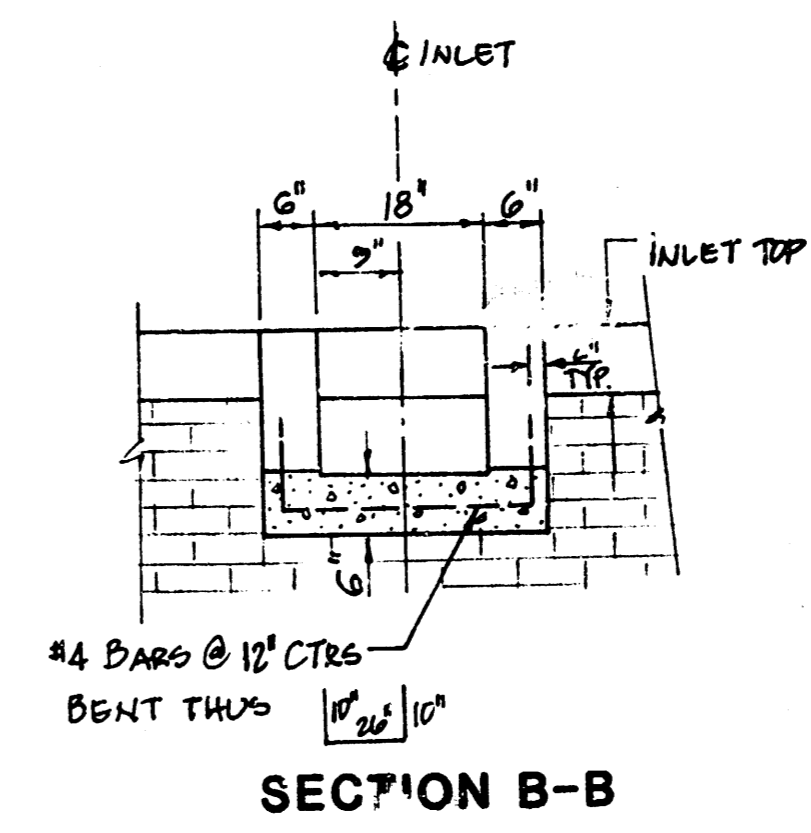
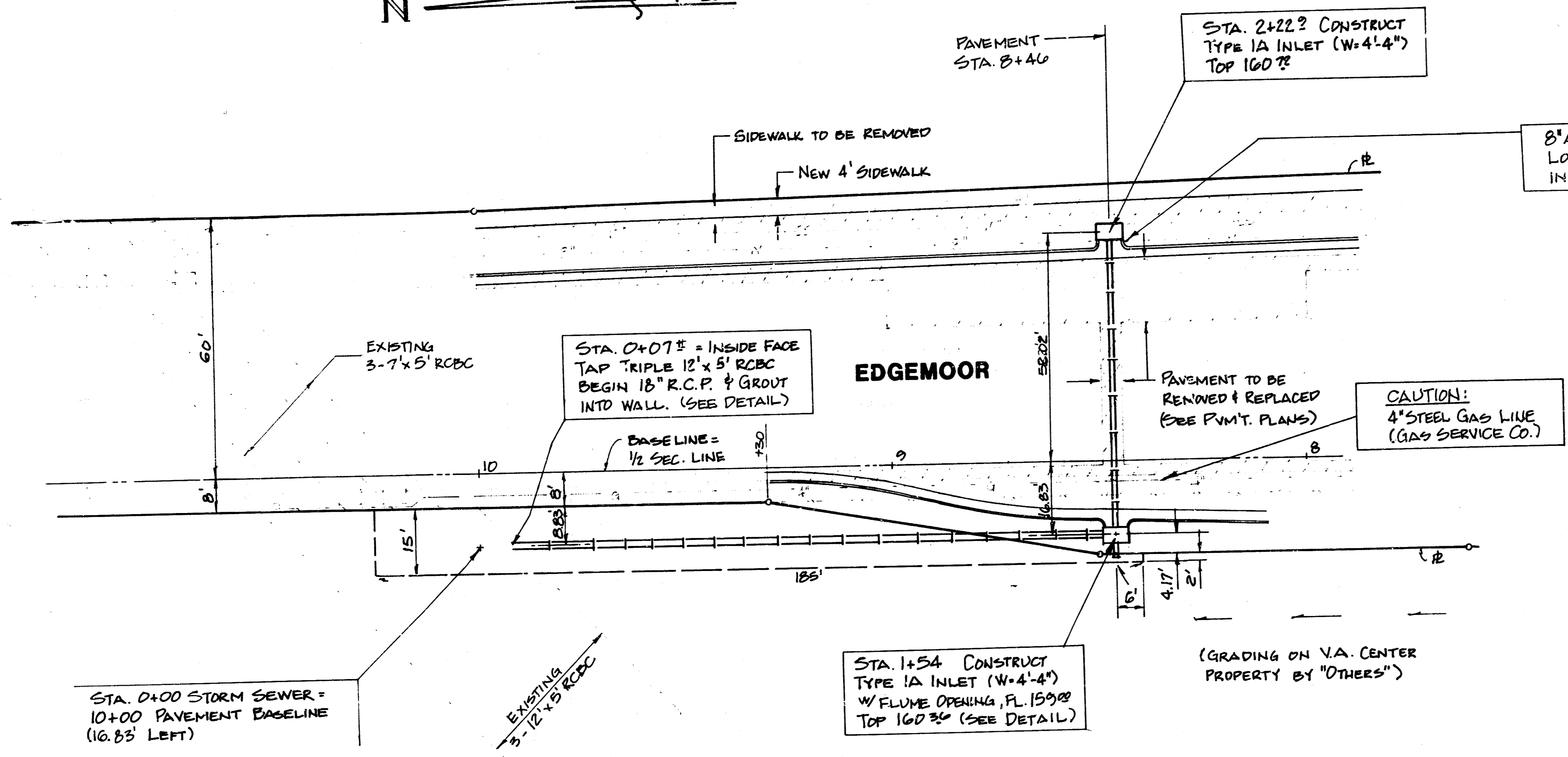
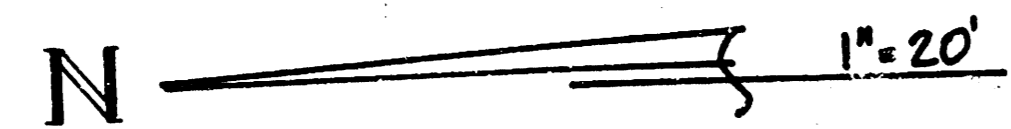
REVISED 9-20-85 TCR

PAVEMENT PLAN
EDGEMOOR STREET IMPROVEMENTS
 CITY OF WICHITA, KANSAS
 Proj. no. 472-76-245-81467-000-000-001

BAUGHMAN COMPANY, P.A.
 SURVEYING & ENGINEERING
 316/262-7271 • 330 LAURA • WICHITA, KANSAS 67211

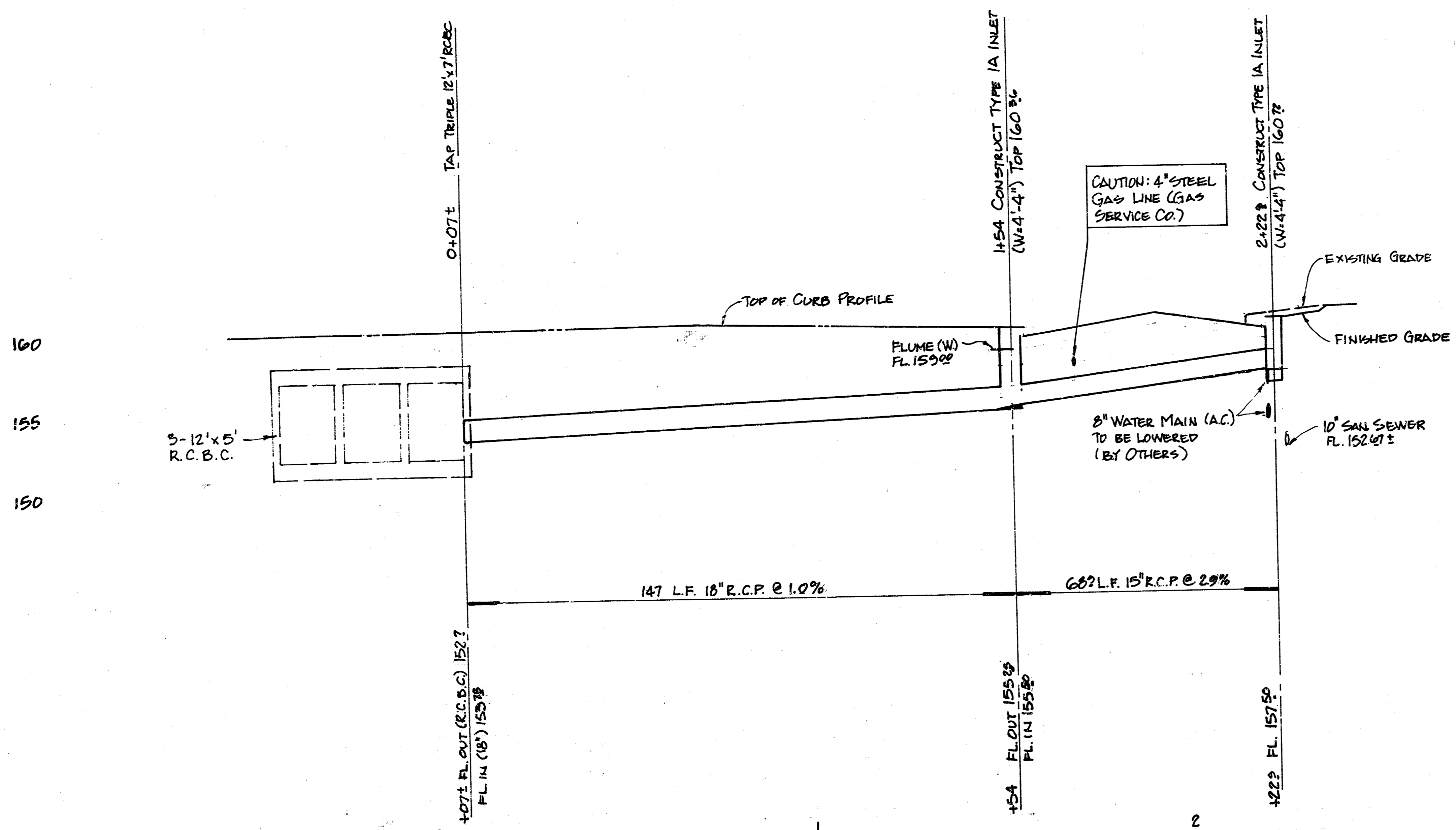
4/9

BENCH MARK
STANDARD DISC ON E. HEADWALL
RCBC @ STA. 11+00 ±, ELEV. 1547.59 MSL



DETAIL FLUME AT INLET

DETAIL PIPE AT RCBC
No Scale



PROFILE SCALE
1" = 20' HORIZ.
1" = 5' VERT.

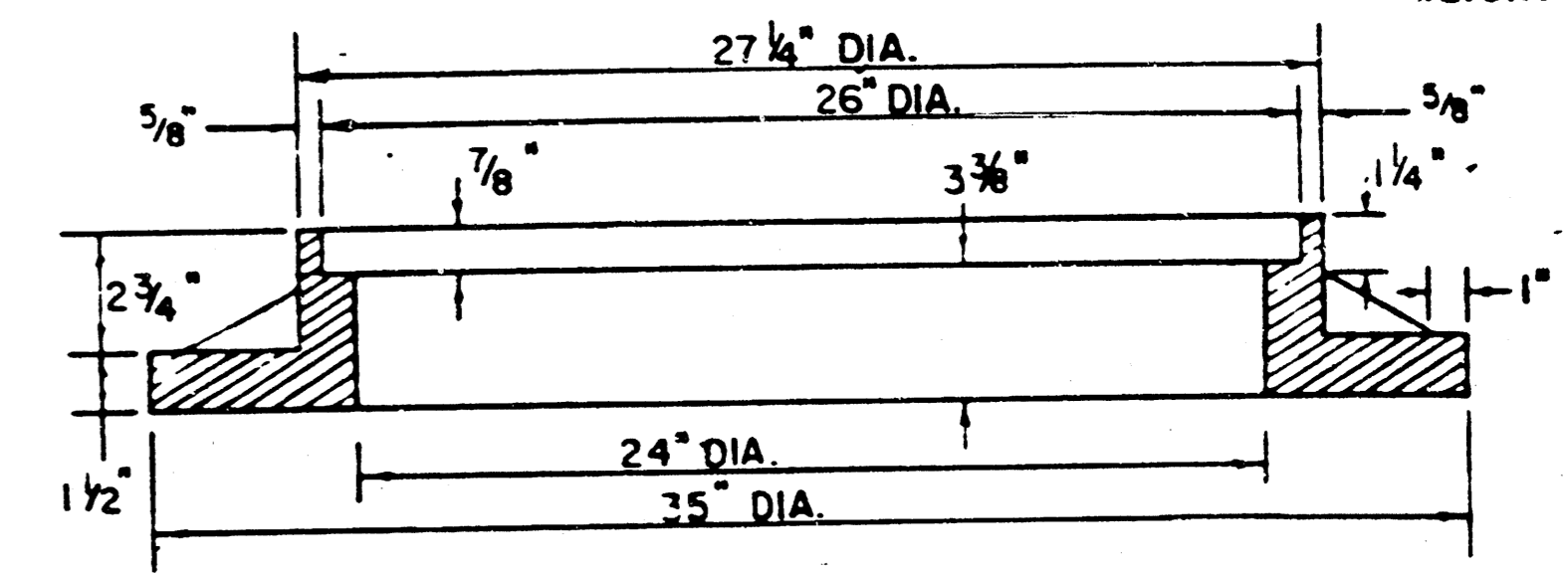
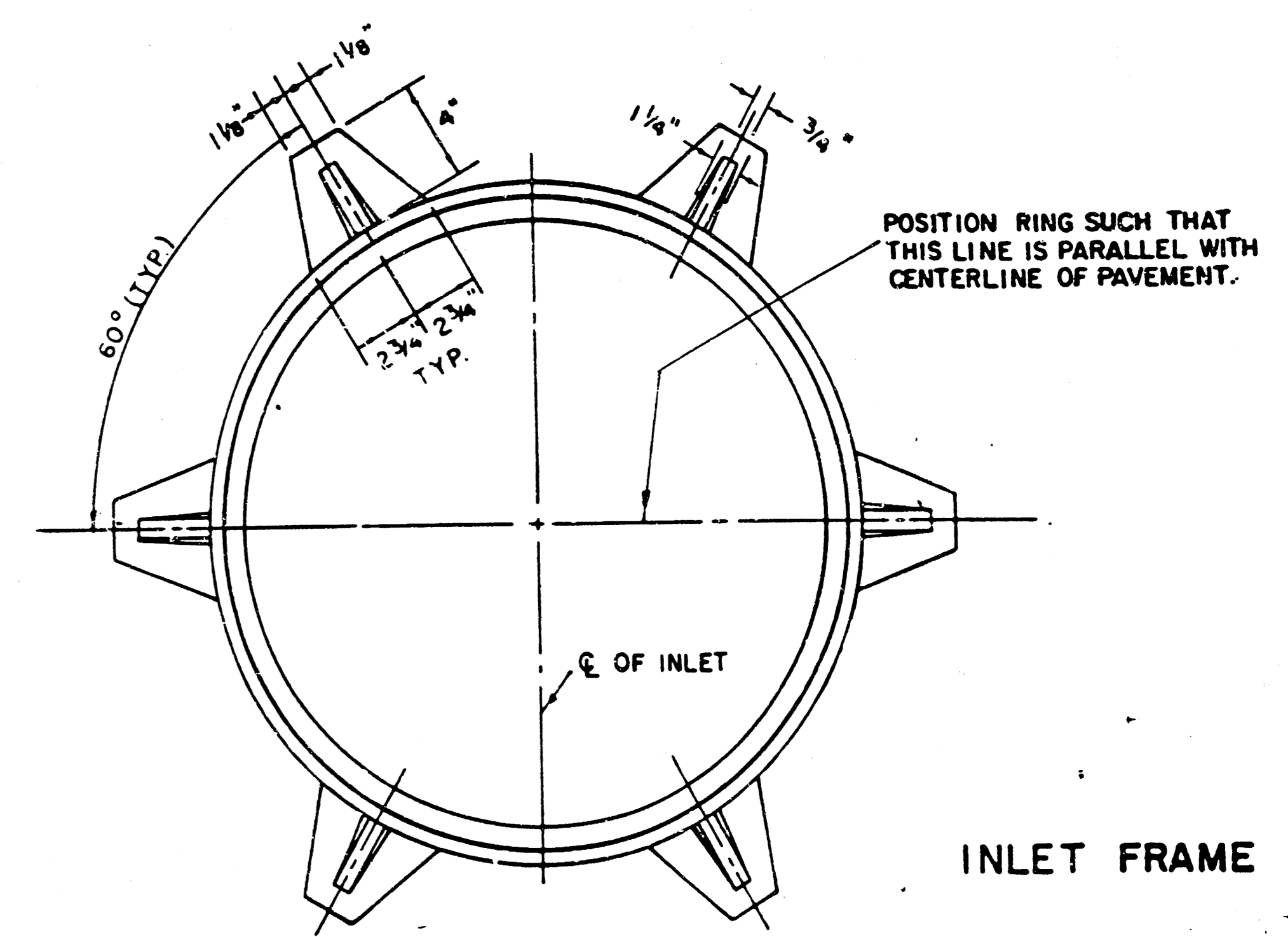
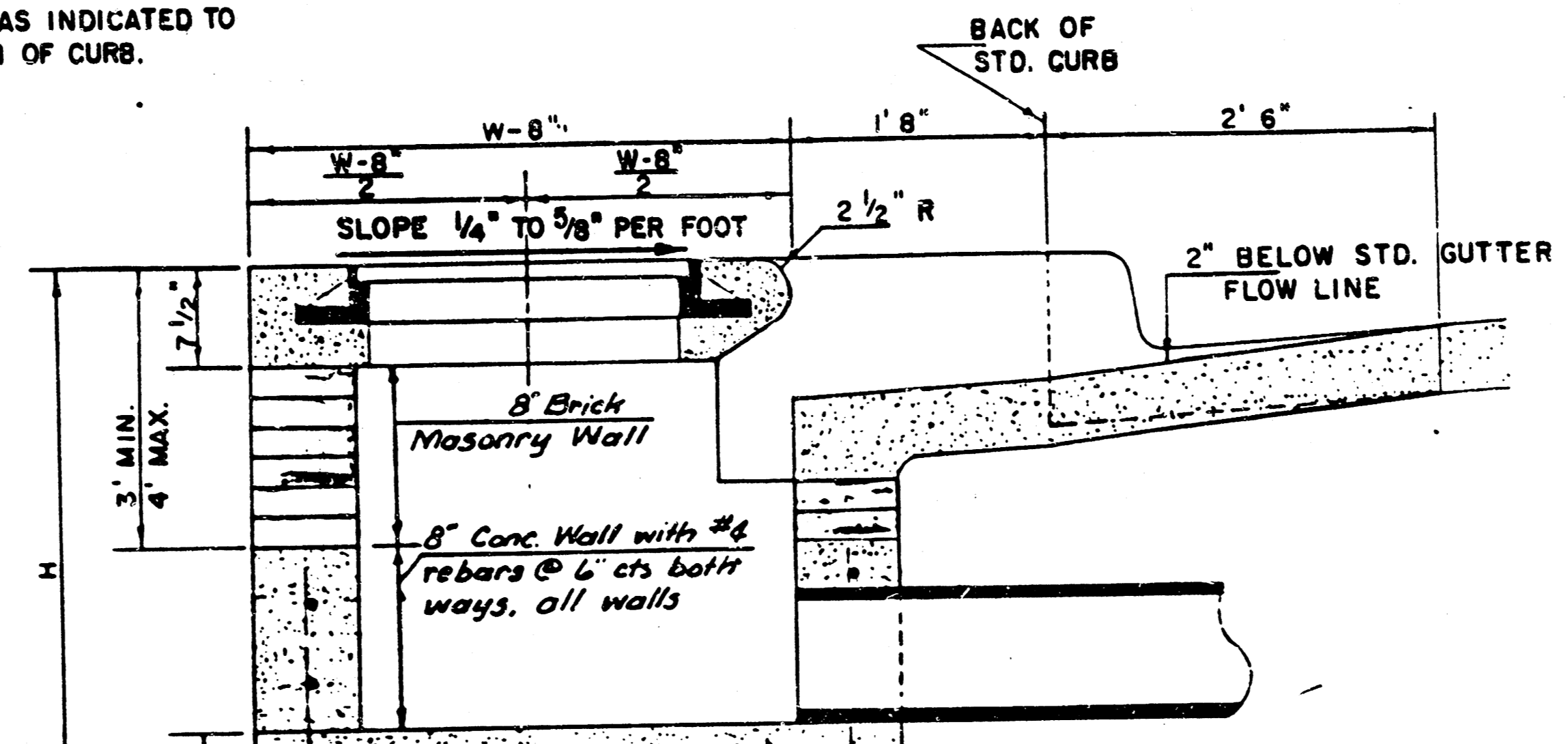
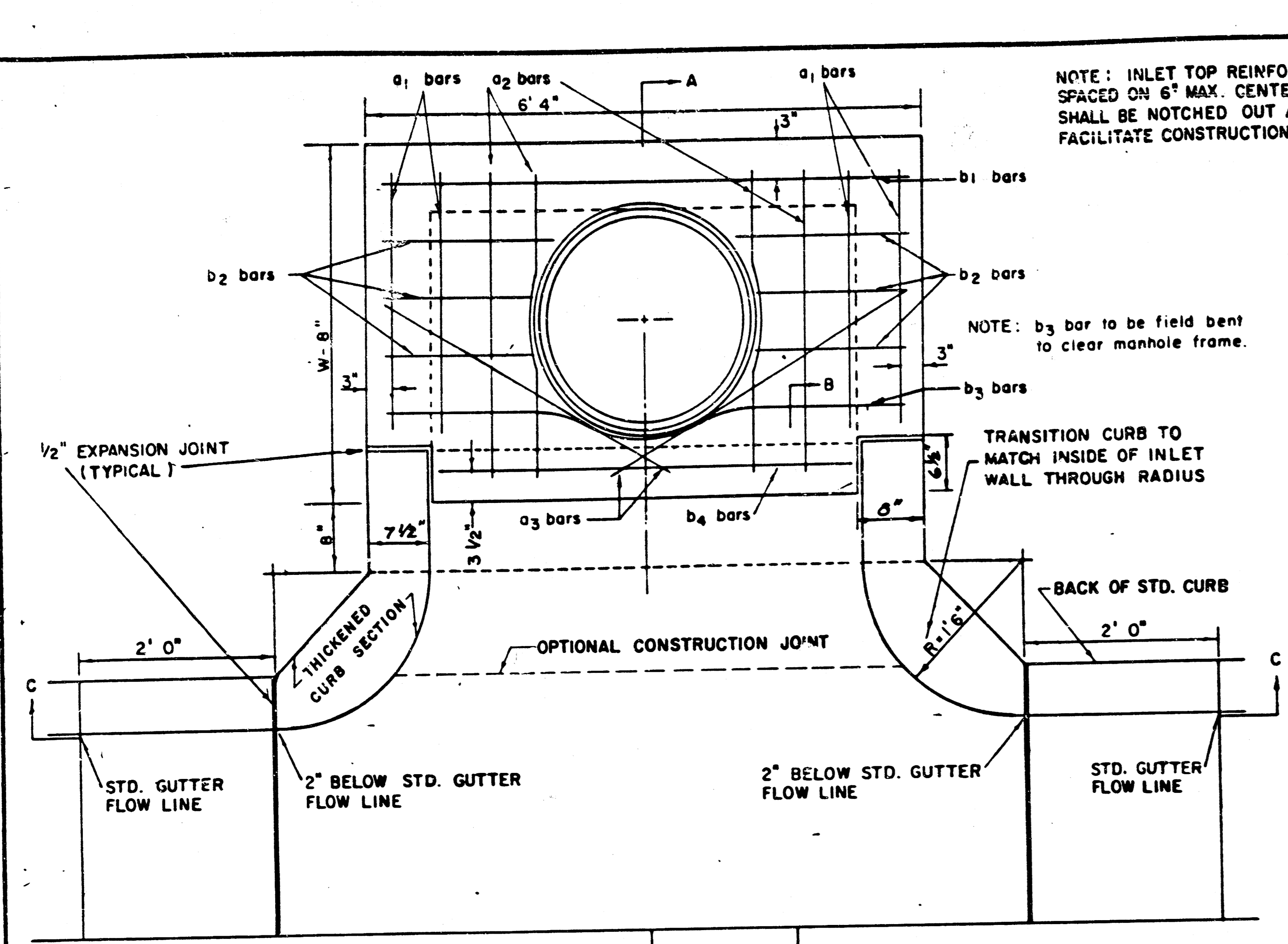
REVISED 9-20-85 TCR

INCIDENTAL DRAINAGE

EDGEMOOR STREET IMPROVEMENTS
CITY OF WICHITA, KANSAS
Proj. no. 472-76-245-81467-000-000-001

BAUGHMAN COMPANY, P.A.
SURVEYING & ENGINEERING
316/262-7271 • 330 LAURA • WICHITA, KANSAS 67211

5/9



SEE CITY OF WICHITA STANDARD MANHOLE FRAME AND COVER DETAIL SHEET FOR COVER DETAILS TO BE USED WITH INLET FRAME.

NOTE: CONTRACTOR SHALL HAVE THE OPTION OF CONSTRUCTING 8" BRICK MASONRY WALLS BETWEEN THE CONCRETE INLET BASE AND TOP ON THIS INLET WHEN W = 6'4" AND H = 7'0" OR LESS.

ADDITIONAL CURB AND GUTTER CONSTRUCTION NECESSARY TO CONNECT SET-BACK INLET TO PAVEMENT WILL BE PAID FOR AT THE UNIT PRICE BID FOR EACH INLET HOOKUP.

INLET INVERT SHALL BE SHAPED WITH 8 SACK SAND MIX CONCRETE TO CREATE FLOW CHANNELS AND TO INCREASE HYDRAULIC EFFICIENCY SUCH THAT THE INLET WILL BE SELF-CLEANING BETWEEN ALL INLET AND/OR OUTLET PIPES.

THE ENDS OF ALL PIPES INSTALLED IN INLETS SHALL BE CUT OFF FLUSH WITH THE INSIDE FACE OF THE INLET WALL.

PLAN

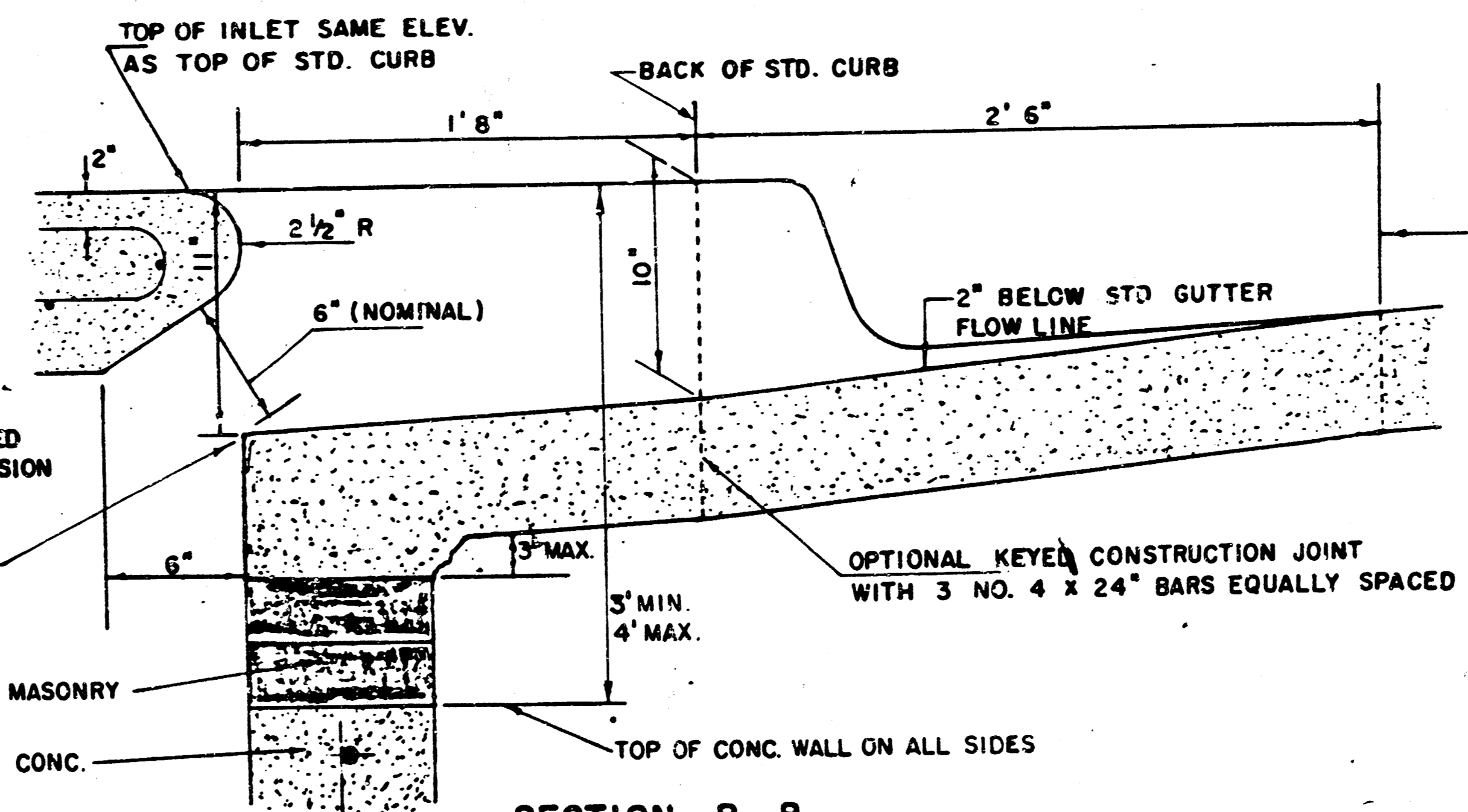
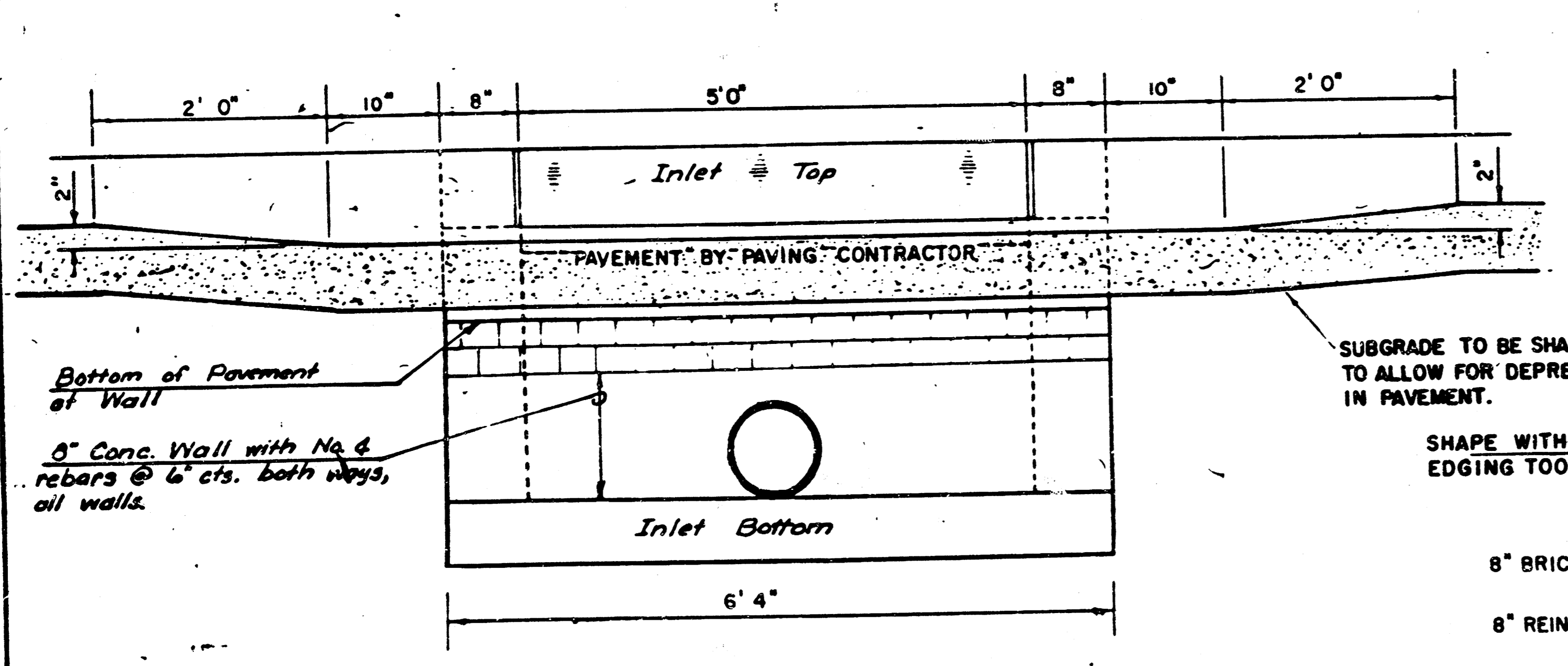
BENDING DIAGRAM

STEEL SCHEDULE

BAR NUMBER	a ₁	a ₂	a ₃	b ₁				b ₂	b ₃	b ₄	WT. LBS.
				W=4'	W=5'	W=6'	W=7'				
1	4"	4"	2"	1"	3"	5"	7"	9"	6"	1"	
2	4"	4"	4"	4"	4"	4"	4"	4"	4"	6"	
3	4"	5"	6"	7"	8"	9"	10"	11"	12"	13"	60±
4	4"	5"	6"	7"	8"	9"	10"	11"	12"	13"	91±
5	4"	6"	7"	8"	9"	10"	11"	12"	13"	14"	101±
6	4"	7"	8"	9"	10"	11"	12"	13"	14"	15"	121±
7	4"	8"	9"	10"	11"	12"	13"	14"	15"	16"	141±

* NOTE: a₃ BARS TO BE PLACED APPROX. 2" BELOW TOP OF INLET COVER

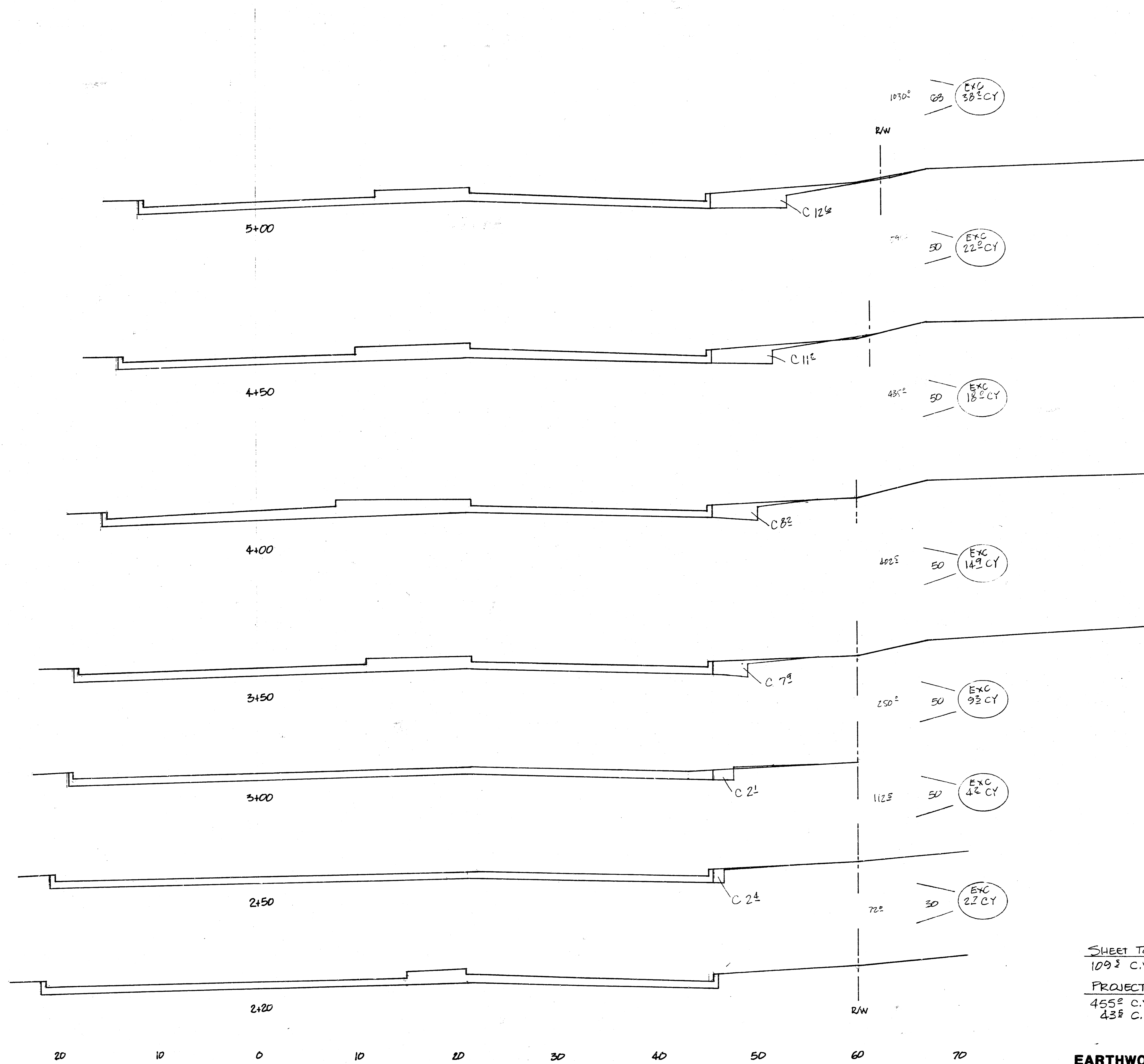
STANDARD CURB INLET PRECAST TOPS			
W	PRE-CAST TOP SIZE	PIPE SIZE	CU. YD. CONC.
4' 4"	5' 8" x 6' 4" x 7 1/2"	21" B SMALLER	0.38 ±
5' 4"	6' 8" x 6' 4" x 7 1/2"	24" B 30"	0.51 ±
6' 4"	7' 8" x 6' 4" x 7 1/2"	36" B 42"	0.64 ±
7' 4"	8' 8" x 6' 4" x 7 1/2"	48" B 54"	0.77 ±
8' 4"	9' 8" x 6' 4" x 7 1/2"	60" B 66"	0.90 ±



REVISED 12-21-1984

DETAIL STANDARD TYPE IA CURB INLET
 CITY OF WICHITA, KANSAS
 INLET OPENING = 6" x 5' 0"
 Project no. 472-76-245-81467-000-000-001
 JUNE 1984

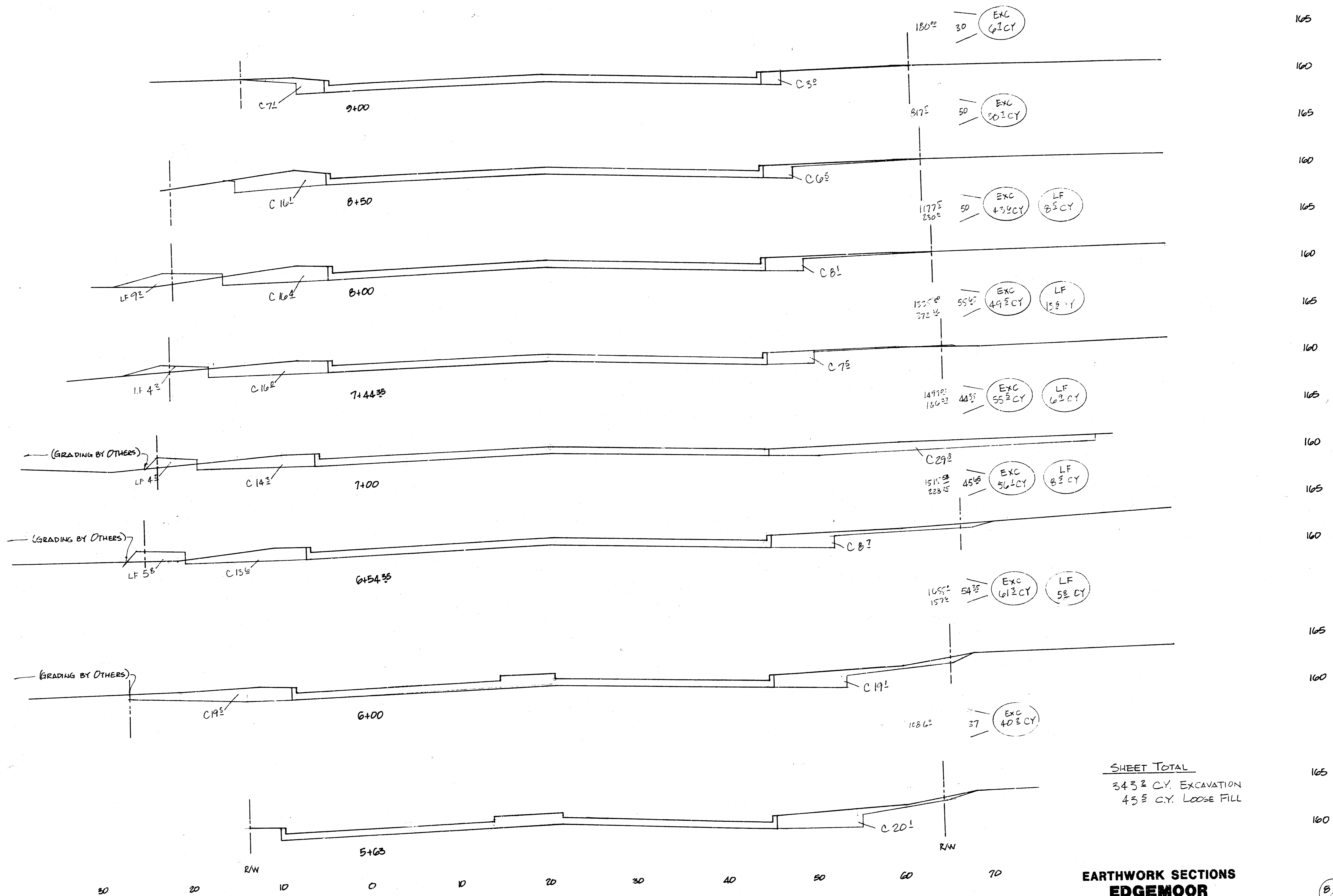
6/9



SHEET TOTAL
 109² C.Y. EXCAVATION
 PROJECT TOTAL
 455² C.Y. EXCAVATION
 43² C.Y. LOOSE FILL

**EARTHWORK SECTIONS
 EDGEMOOR**
 Project no. 472-78-245-81467-000-000-001

7/9
 7/9



SHEET TOTAL
 343.2 CY. EXCAVATION
 43.5 CY. LOOSE FILL

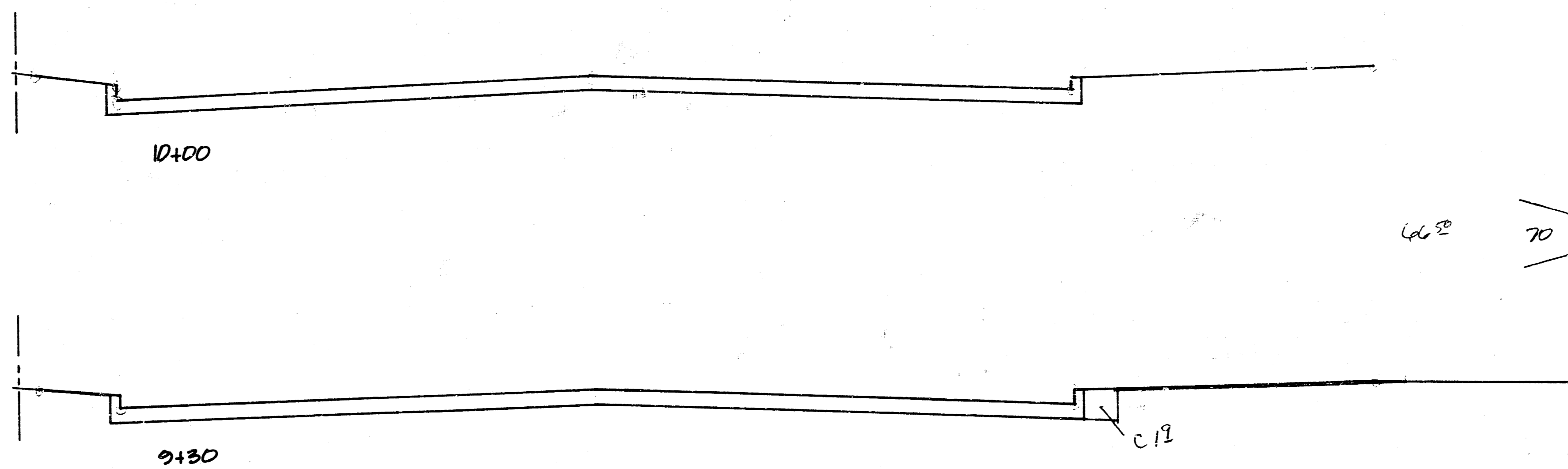
EARTHWORK SECTIONS
EDGEMOOR
 Project no. 472-76-245-81467-000-001

B/9
 8/9

TR

PA 20

30 20 10 0 10 20 30 40 50 60 70



EXC
2 1/2 CY

SHEET TOTAL
2 1/2 CY. EXCAVATION

**EARTHWORK SECTIONS
EDGEMOOR**

Project No. 472-76-249-81467-000-000-001

165

160

165

160

2/2

9/9