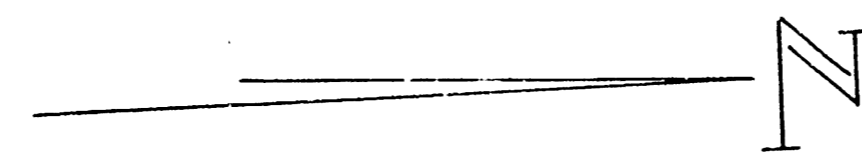
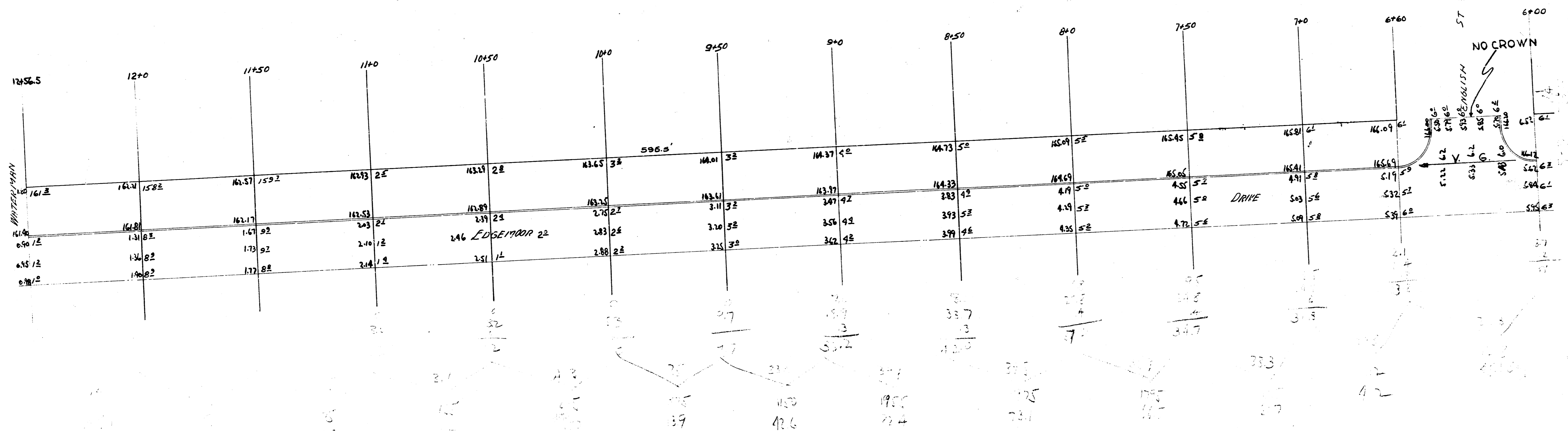


B.M. "G" in Globe, W. of Edgemore of H.L. Douglas. 173.18



-7.19%  
Wk 9.4

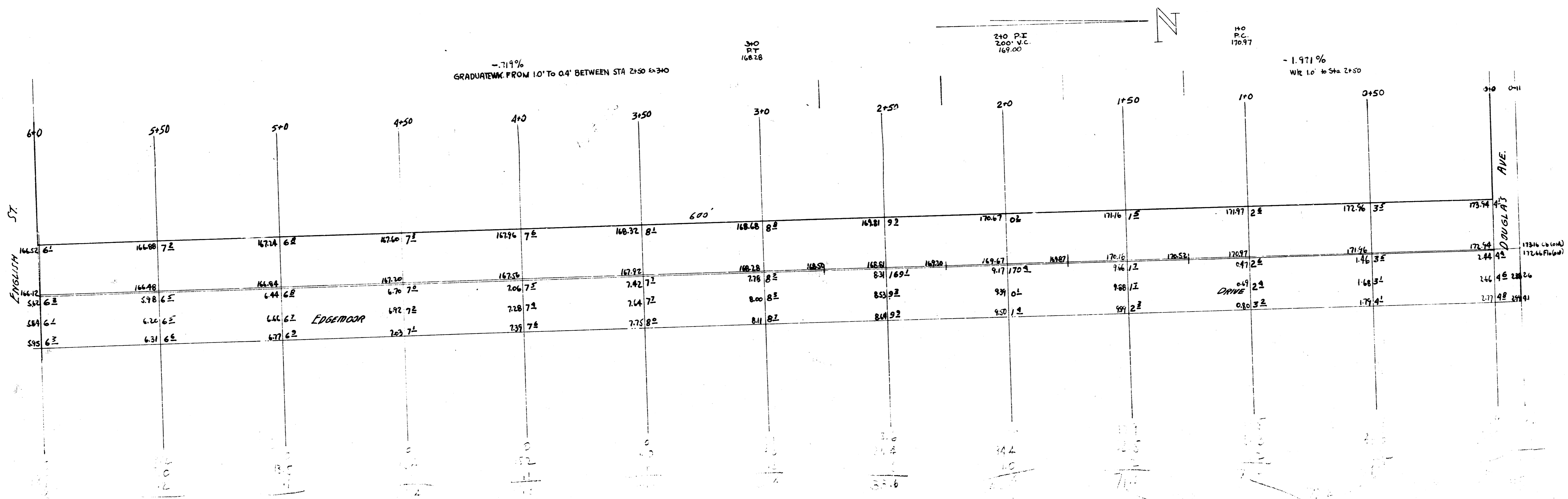


APPROVED FOR THE CITY OF WICHITA  
 JULY 1947

W. HALL - EDGEMORE  
 ST. DOUGLAS to DRIVE  
 N. WATERMAN  
 20' CONC. & CURB  
 CITY of WICHITA KANSAS  
 ENGINEERING DIVISION  
 L.K. WHITE CITY ENGINEER  
 JULY 1947

X-section  
Done

B.M. 173 1/2 6" in Globe w. ch. Edgemoor / N.L. Douglas.



EDGEWOOD W 1/2 DRIVE  
S.L. DOUGLAS TO N.L. WATERMAN  
20' CONCRETE CURB  
CITY OF WICHITA KANSAS  
ENGINEERING DIVISION  
L.H. WHITE CITY ENGINEER  
JULY 1947