

B.M. 15 IN SOUTH GLOBE N END W RAD. W.C.B. EDGEMOOR 47' N. OF C. OF CENTRAL ELEV. 186.25

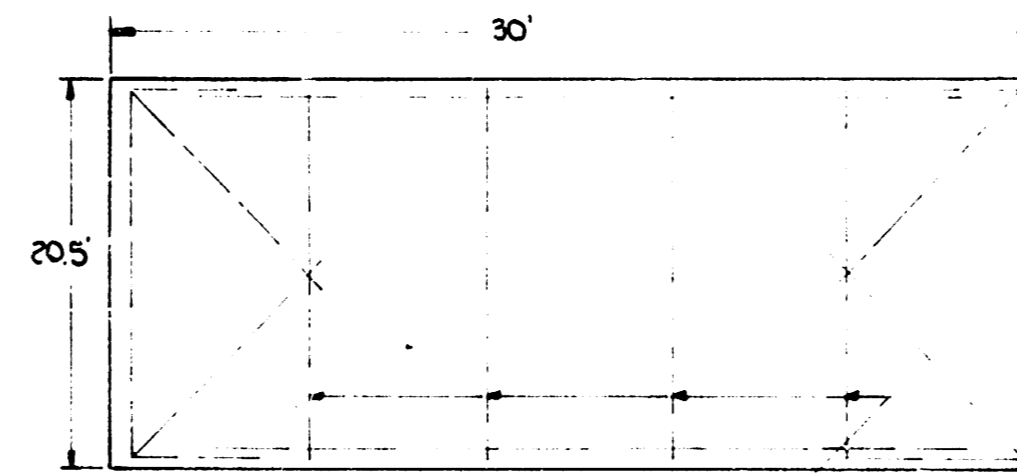
B.M. NE COR CONC PORCH HO. # 635 N. EDGEMOOR ELEV. 196.14

0.10 TRIMBLE N.L. CENTRAL & N.L. EDGEMOOR

0.15 2'-5/2" CR. (E.G.B.)

0.45 1/2" NEND CONC PAVT

1.65 8/65 4" BAR WIRE (RACE (400 PDS) 30'

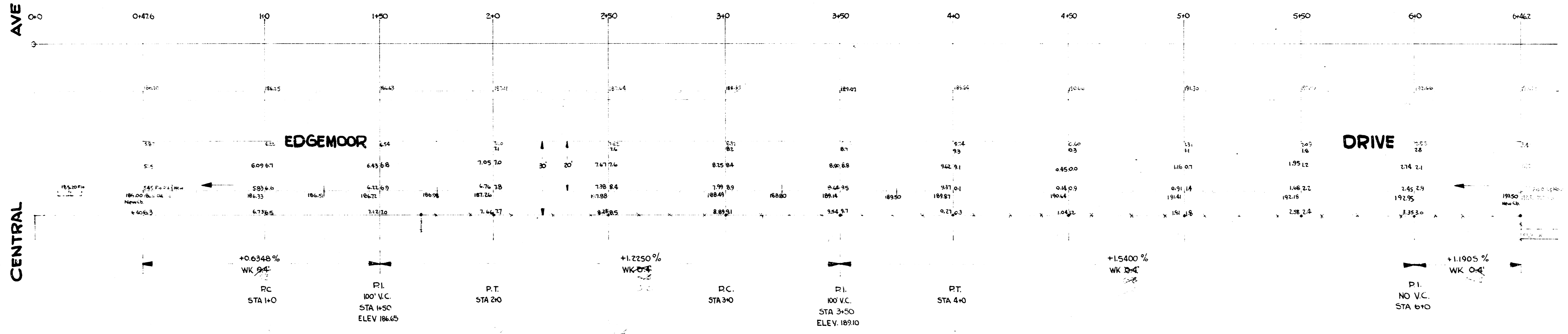


ADD 4-19# TRANSVERSE BARS PER 30' SECTION NO SCALE

0.45 1/2" NEND CONC PAVT

AVE

CENTRAL



E1/2  
EDGEMOOR DR  
N.L. CENTRAL TO 610 S OF S. 1st  
20' CONC & CURB  
CITY OF WICHITA, KANSAS  
B.E. SMITH  
MAR. 1954  
CITY ENGINEER  
PROJ. NO. 115-483