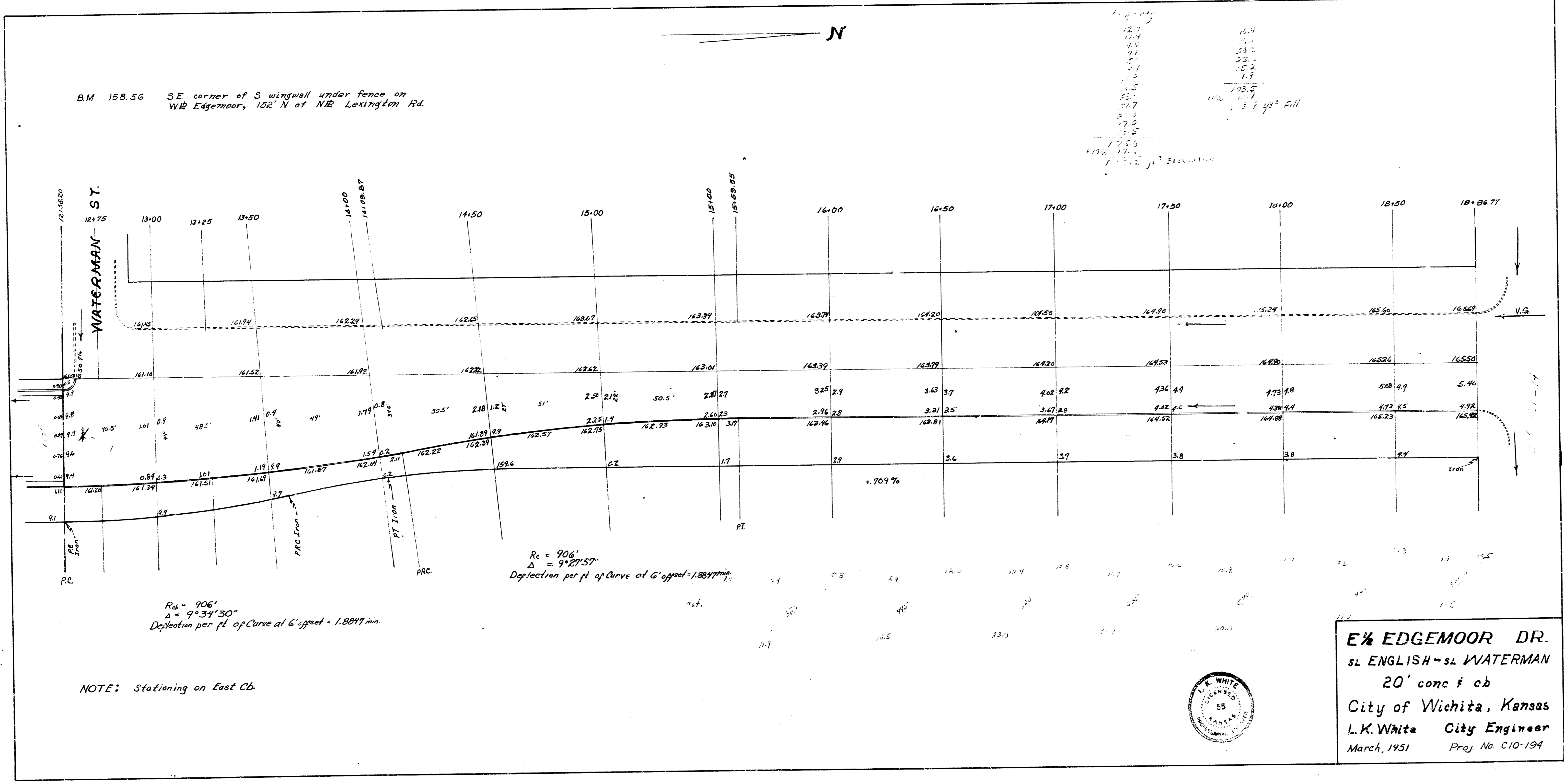


B.M. 158.56 SE corner of S wingwall under fence on
WB Edgemoor, 152' N of NB Lexington Rd.

12.7	164
13.7	161
14.7	158
15.7	155
16.7	152
17.7	149
18.7	146
19.7	143
20.7	140
21.7	137
22.7	134
23.7	131
24.7	128
25.7	125
26.7	122
27.7	119
28.7	116
29.7	113
30.7	110
31.7	107
32.7	104
33.7	101
34.7	98
35.7	95
36.7	92
37.7	89
38.7	86
39.7	83
40.7	80
41.7	77
42.7	74
43.7	71
44.7	68
45.7	65
46.7	62
47.7	59
48.7	56
49.7	53
50.7	50
51.7	47
52.7	44
53.7	41
54.7	38
55.7	35
56.7	32
57.7	29
58.7	26
59.7	23
60.7	20
61.7	17
62.7	14
63.7	11
64.7	8
65.7	5
66.7	2
67.7	-1
68.7	-4
69.7	-7
70.7	-10
71.7	-13
72.7	-16
73.7	-19
74.7	-22
75.7	-25
76.7	-28
77.7	-31
78.7	-34
79.7	-37
80.7	-40
81.7	-43
82.7	-46
83.7	-49
84.7	-52
85.7	-55
86.7	-58
87.7	-61
88.7	-64
89.7	-67
90.7	-70
91.7	-73
92.7	-76
93.7	-79
94.7	-82
95.7	-85
96.7	-88
97.7	-91
98.7	-94
99.7	-97
100.7	-100



E½ EDGEMOOR DR.
 SL ENGLISH - SL WATERMAN
 20' conc & cb
 City of Wichita, Kansas
 L.K. White City Engineer
 March, 1951 Proj. No C10-194