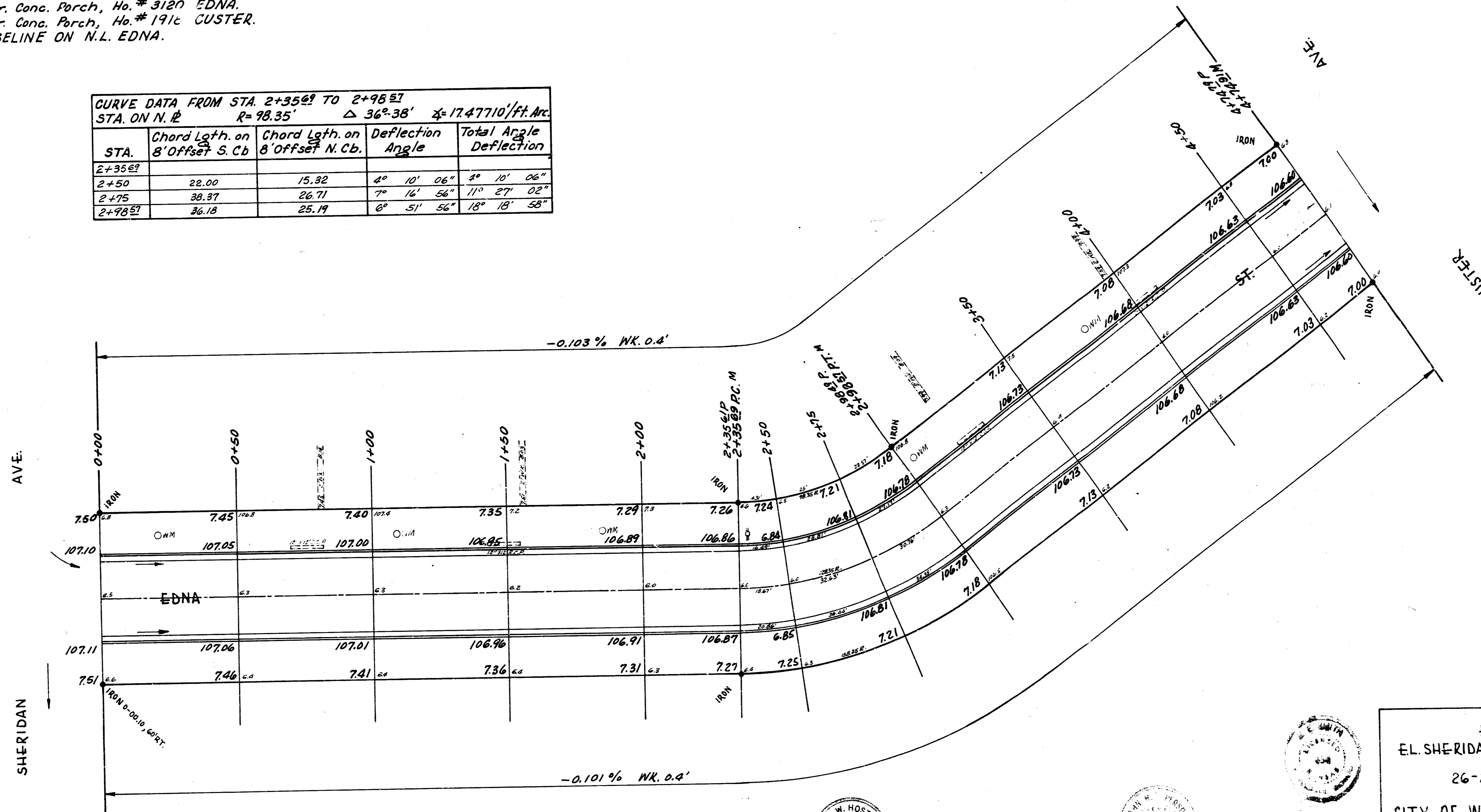


B.M. 109.11 S.W. Cor. Conc. Porch, No. # 3120 EDNA.
 B.M. 108.69 N.W. Cor. Conc. Porch, No. # 191c CUSTER.
 STATIONING & BASELINE ON N.L. EDNA.

CURVE DATA FROM STA. 2+35.81 TO 2+98.51
 STA. ON N. L. R=98.35' Δ=36° 38' Δ=17.47710'/ft. Arc

STA.	Chord Lgth. on 8' Offset S. Cb.	Chord Lgth. on 8' Offset N. Cb.	Deflection Angle	Total Angle Deflection
2+35.81				
2+50	22.00	15.32	4° 10' 06"	2° 10' 06"
2+75	38.37	26.71	7° 16' 56"	11° 27' 02"
2+98.51	36.18	25.19	6° 51' 56"	18° 18' 58"



Checked by: [Signature]
 Date: 6/2/58
 Drawn by: [Signature]
 Date: 5/27/58

EXCAVATION

PROP. FILL	48.8	PROP. CUT	34.8
PLUS 10%	4.3	PLUS 10%	3.5
TOTALS	53.7 C.Y.		37.3 C.Y.

NOTE: Entrance Pipes to be disposed of in
 accordance to Instructions of City Dirt Checker.



EDNA
 EL. SHERIDAN ~ W.L. CUSTER
 26-2-30 A.C.
 CITY OF WICHITA, KANSAS.
 B.E. SMITH CITY ENGINEER
 JUNE, 1958 PROJ. NO. C17-133