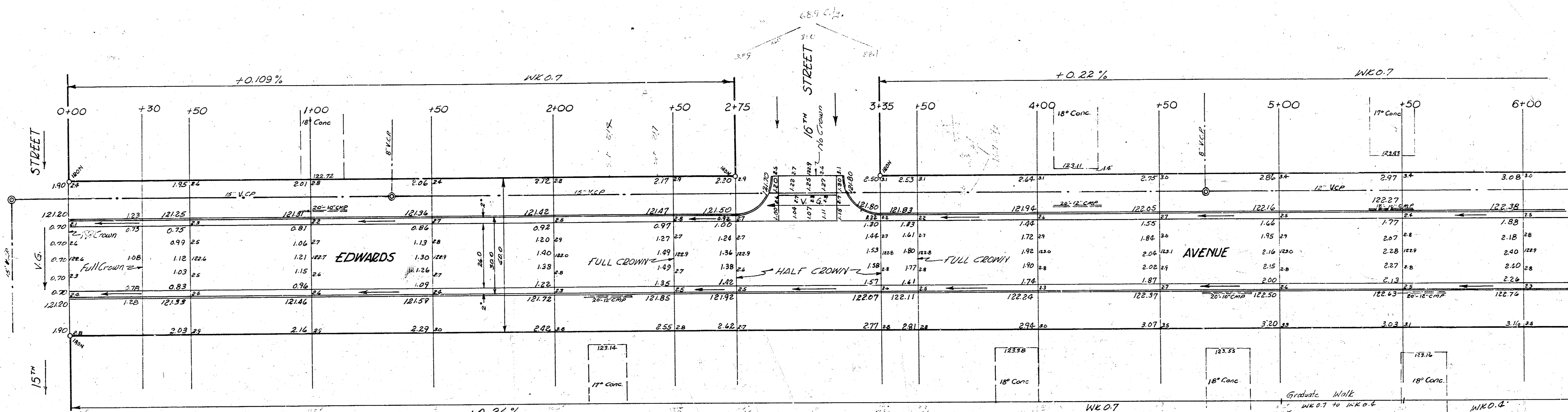
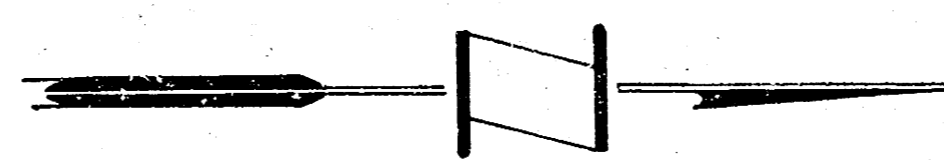


BM - 124.11 NE cor conc parbr ES house on NW cor 15th & Edwards.

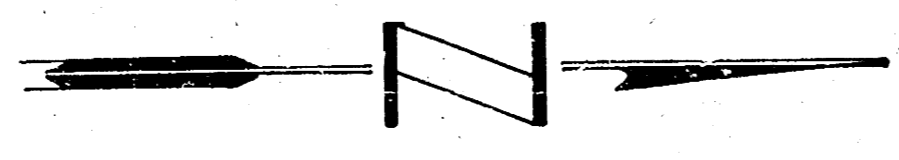


Survey GY
 Plan No.
 1937

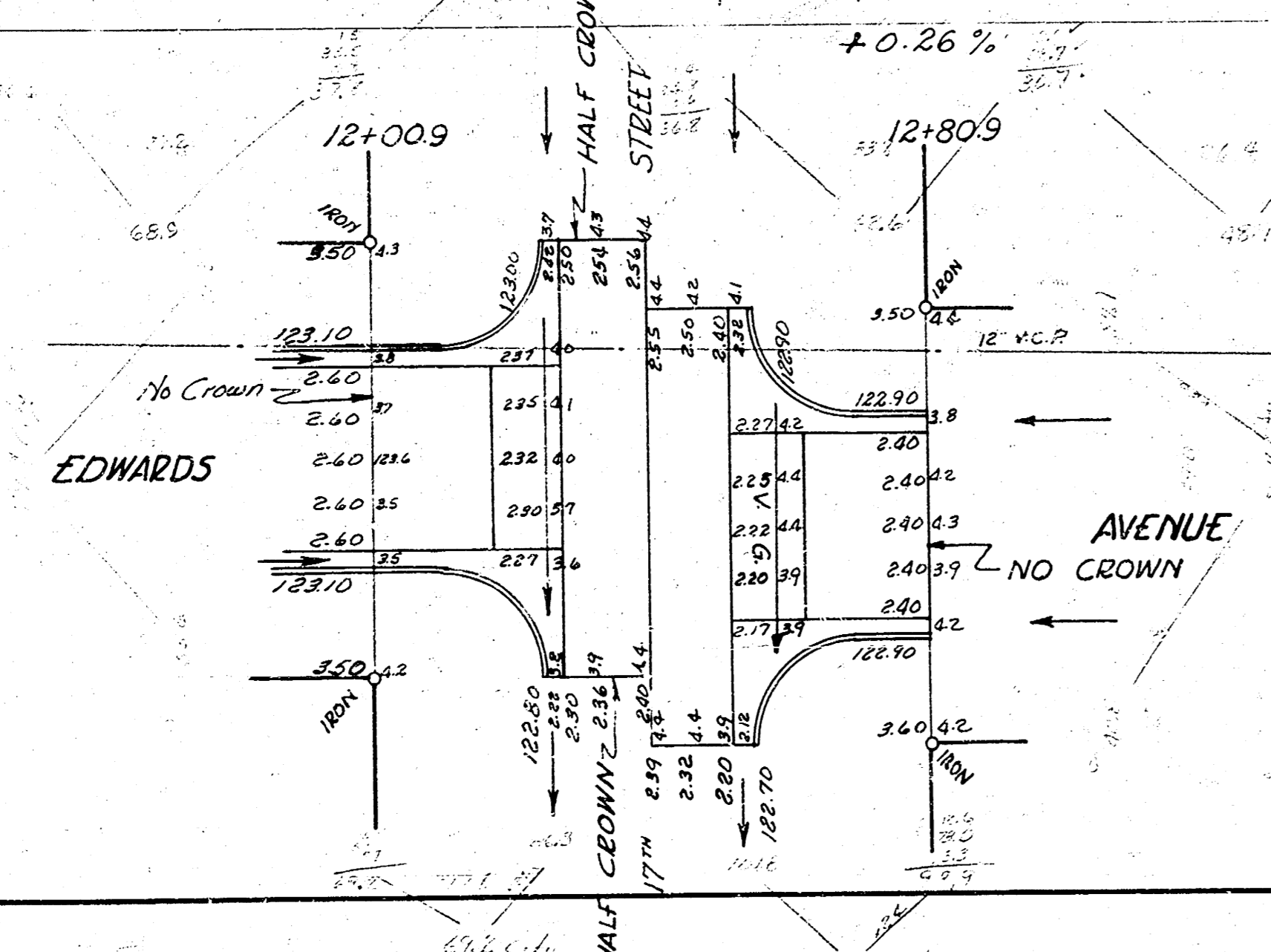
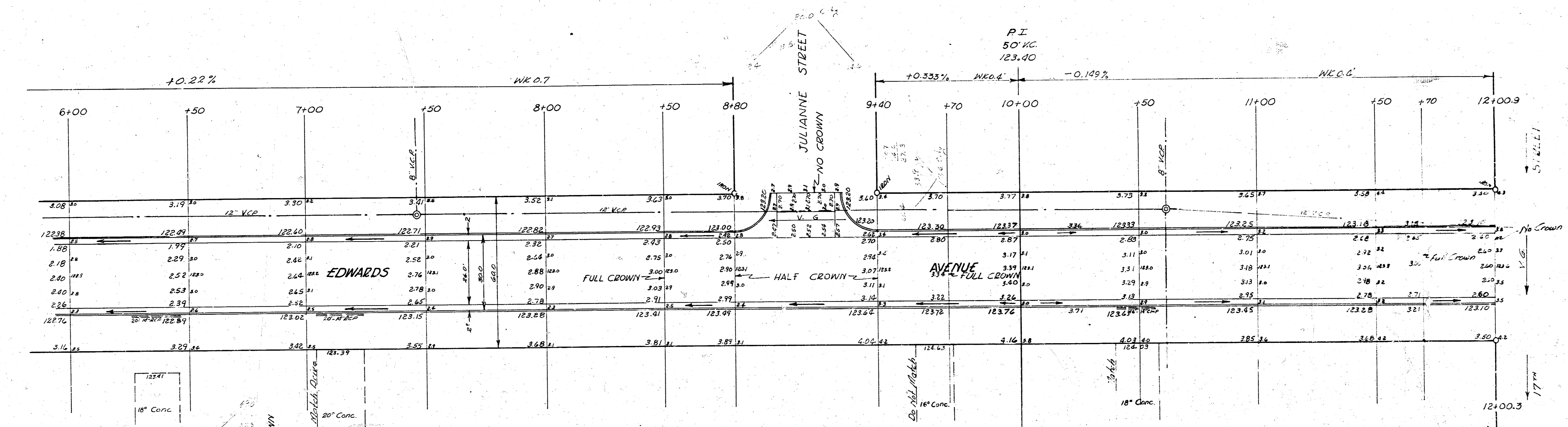
Property
 121.20
 121.25
 121.27
 121.34
 121.42
 121.47
 121.50
 121.57
 121.72
 121.85
 121.92
 122.07
 122.11
 122.24
 122.37
 122.43
 122.74



EDWARDS AVENUE
 NL 15th St to NL 17th St
 26-2-30AC
 CITY OF WICHITA, KANSAS
 B.E. SMITH CITY ENGINEER
 AUG 1937 PROJ NO C16-190



BM - 124.78 RR spike NE side HLP SW cor 17th & Edwards.



EDWARDS AVENUE
NL 15th St to NL 17th St
Sheet 2 of 2

PROJ NO C16-130