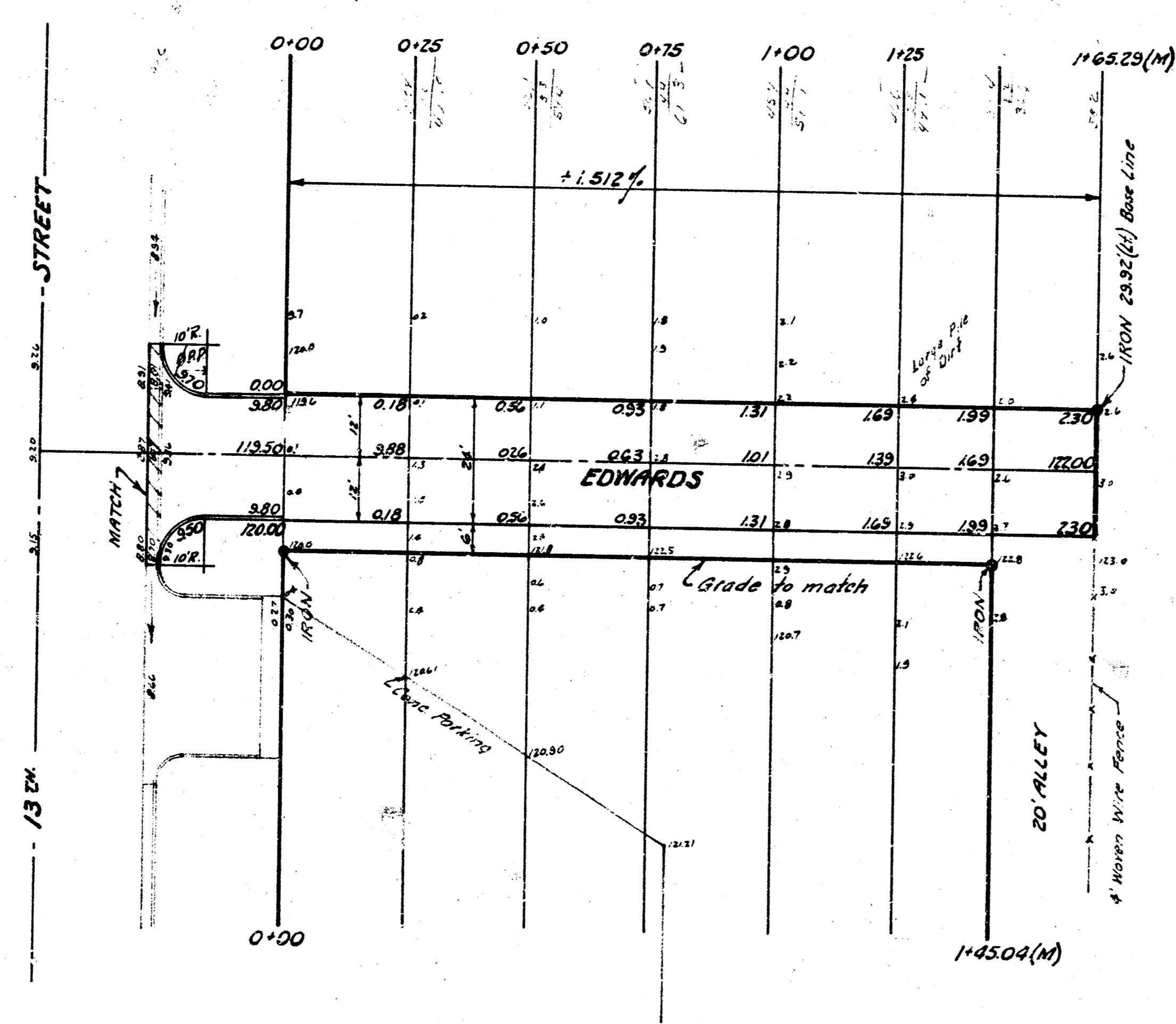
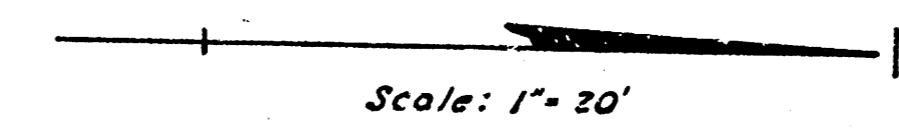


Survey 172  
Plan 224  
City Standard  
Checked [Signature]

B.M. 11834 City Standard  
S.E. corner 13th & Meridian

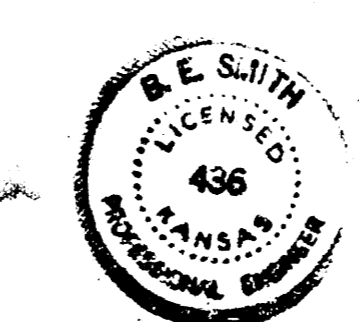
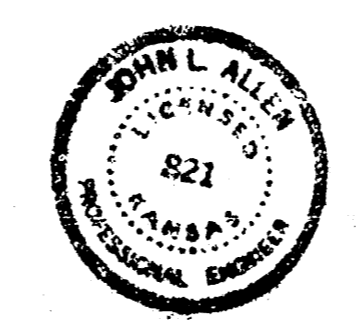
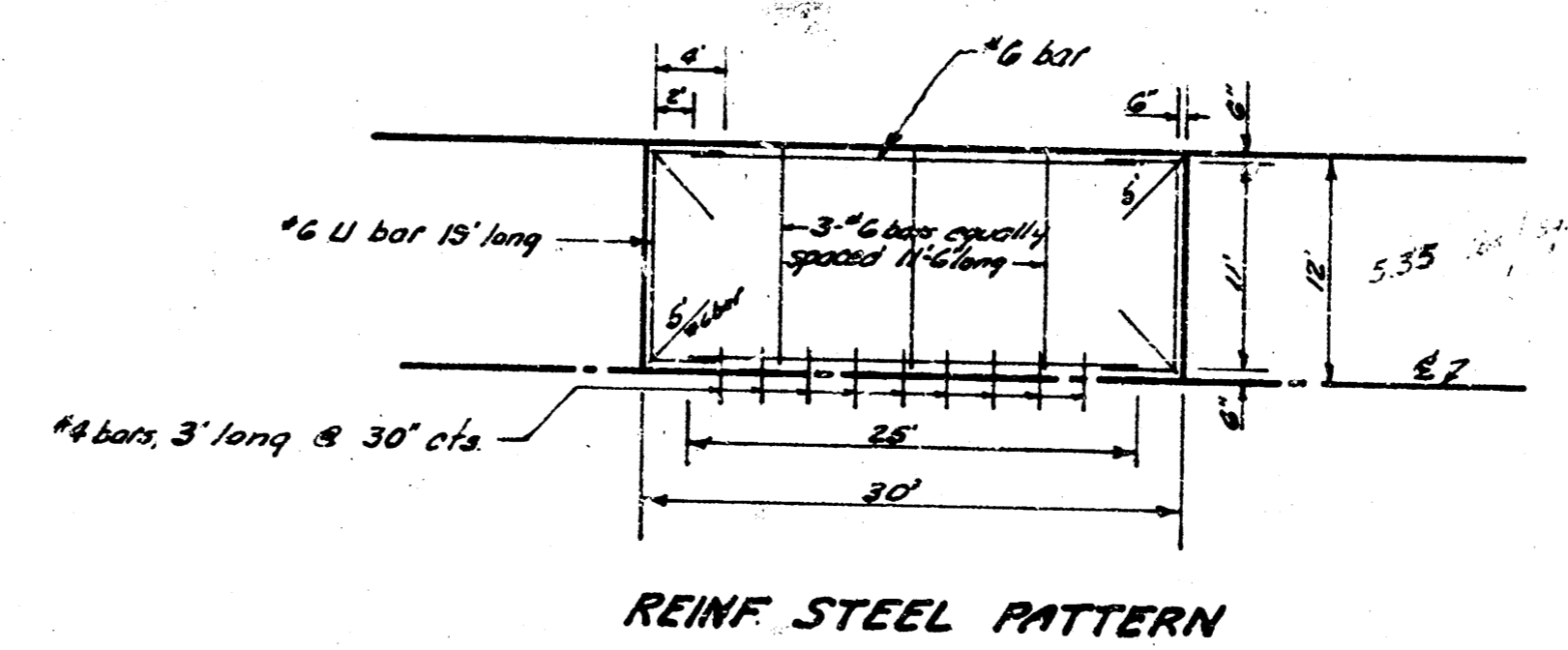
B.M. 12024 "a" cut on S.W. corner conc base  
to flood light, N.L. 13th & 9' E. of E.L. Edwards.



**ESTIMATED QUANTITIES**

- 325' Sq Yds 7" Conc. Pavement
- 65' Lin. Ft. Reinf. Int. Curb
- 194' Lin. Ft. Manhole Joint
- 2365' Lbs. Reinf. Steel
- 311' Cu Yds Excavation
- 45' Lin. Ft. Comb. Curb & Gutter Removed
- 10' Lin. Ft. Fence Removed

**NOTE TO CONTRACTOR**  
This project will be constructed under the supervision of the CITY ENGINEER and conforming to the SPECIFICATIONS of the CITY OF WICHITA. The CONTRACTOR will reimburse the City of Wichita for all cost of Engineering, Plans, and Inspection.



EDWARDS STREET from N.L. 13th St.  
to N.L. Alley N. of 13th  
24'-7" Concrete  
CITY OF WICHITA, KANS. B.E. SMITH CITY ENGR.  
Private Job