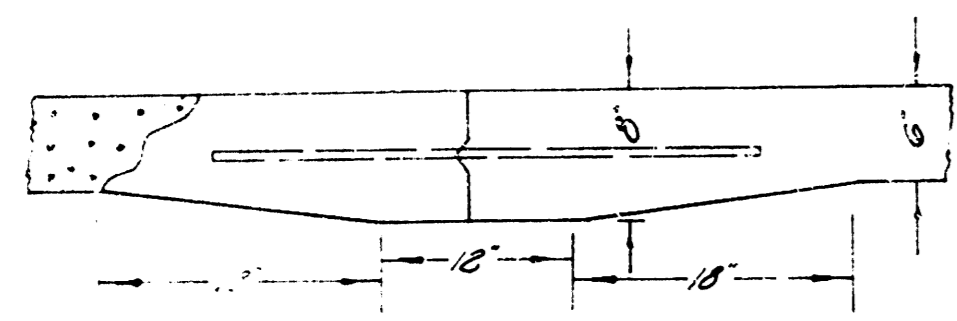
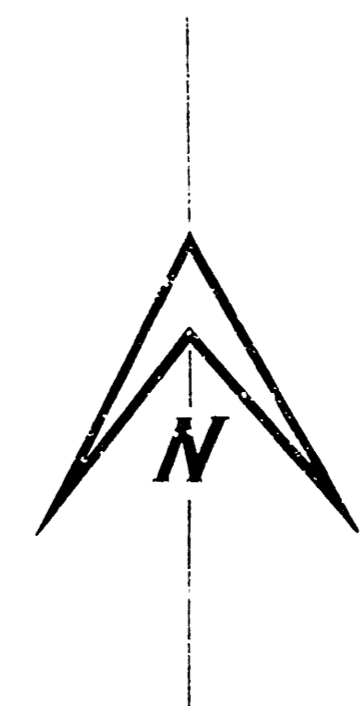
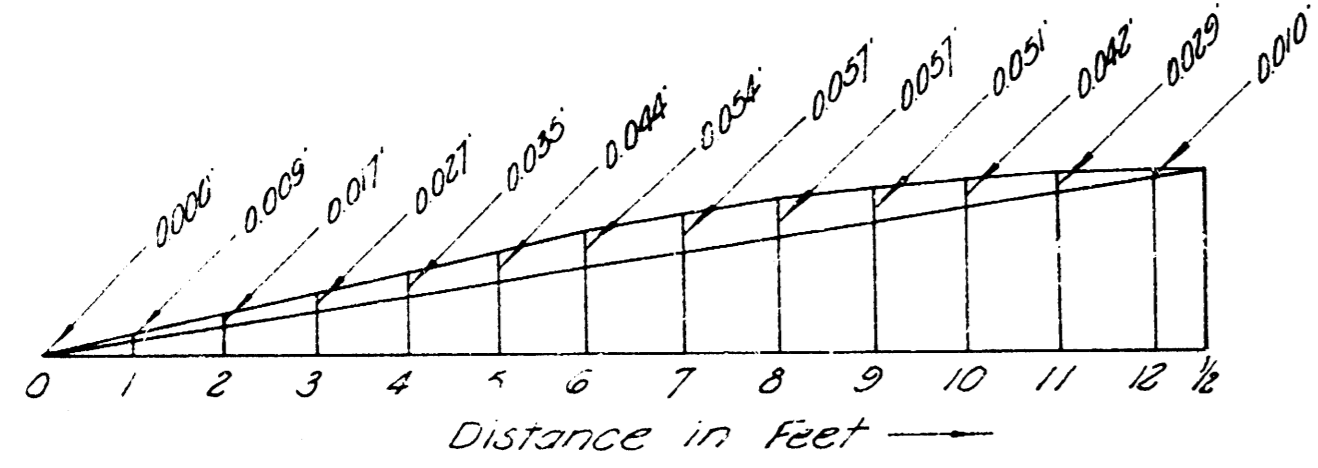


B.M. 16211 "5" in Globe, S. Curb Drive on E. Side Oliver.
 B.M. 16730 N.E. Corner Tile Parch. Ho #335 S. Oliver.
 B.M. 16141 SE Cor Bottom Step, E. End Brick Building, NW Cor. Filberts & Glendale.



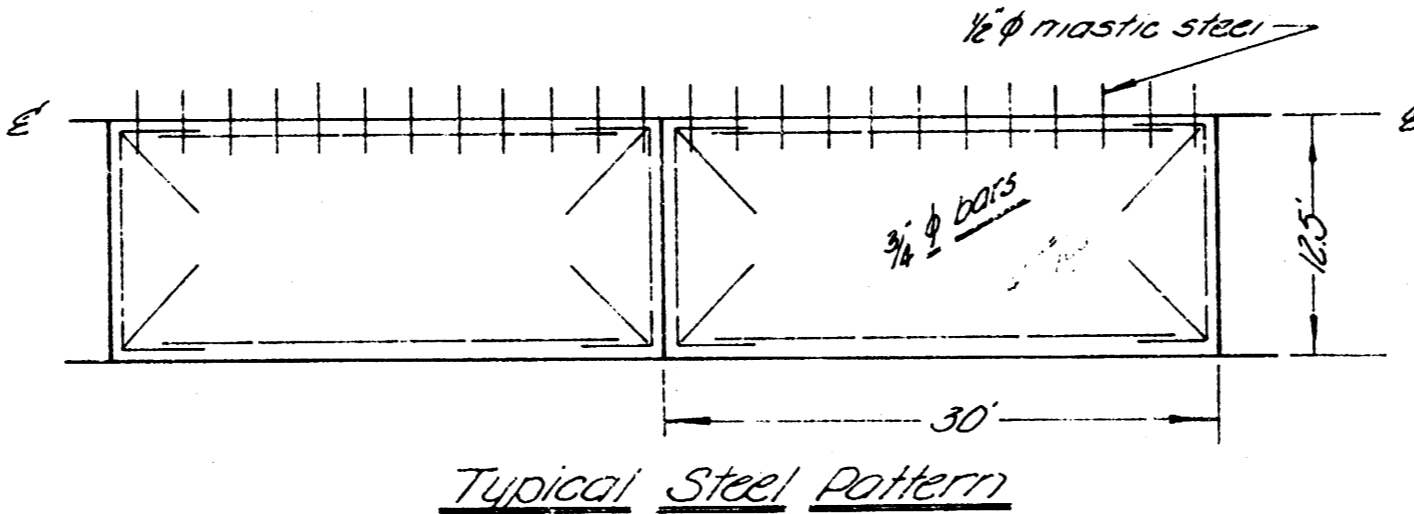
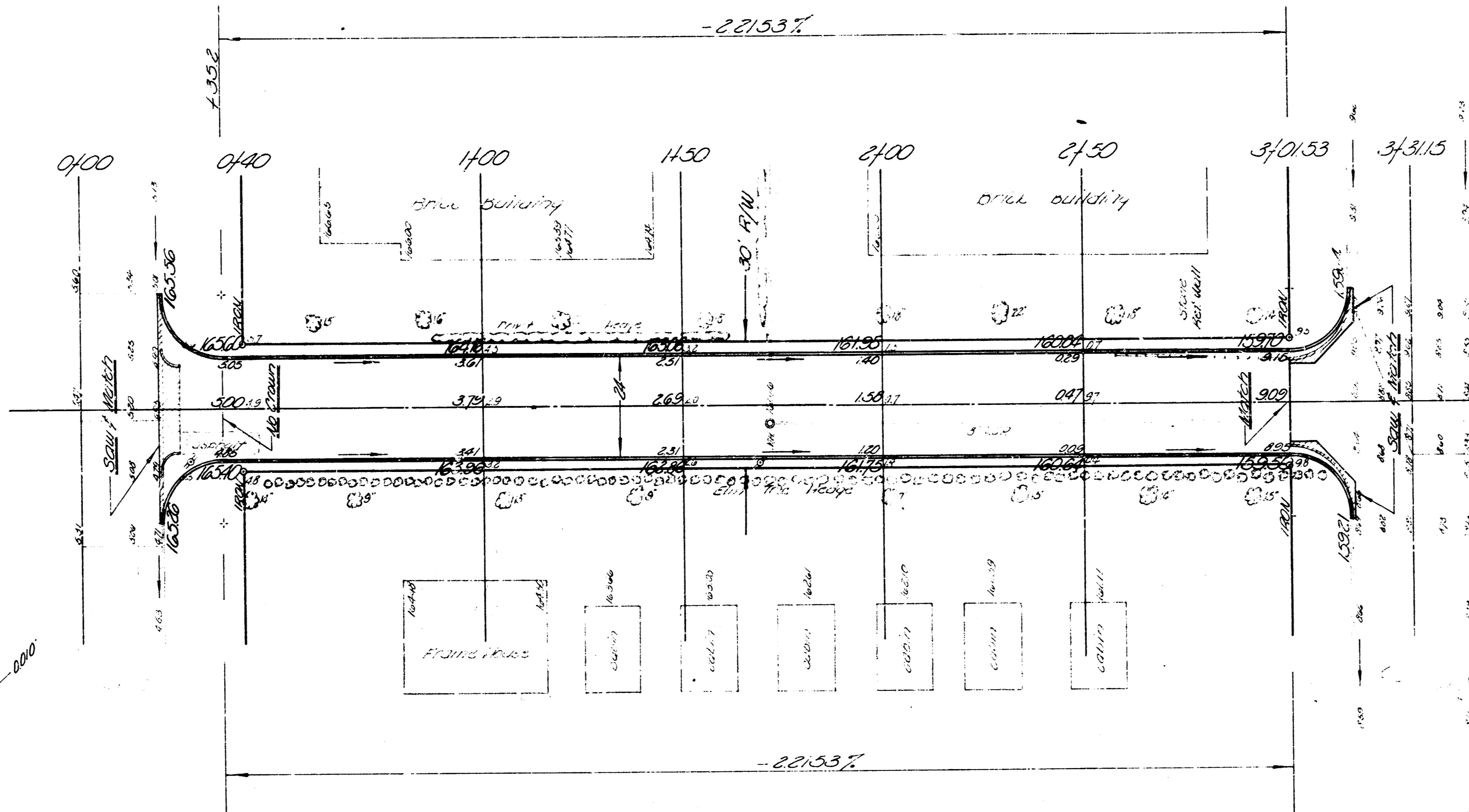
Use #4 bars, 3' long on 2'6" ctr.
 DETAIL OF MASTIC JOINT

NOTE:
 From 0' to 6' is straight
 slope of 1/8" per foot. From
 6' to 12' is Parabolic Crown.



Distance in Feet	Rise in Crown in Feet
0	0.000
1	0.001
2	0.004
3	0.009
4	0.016
5	0.025
6	0.036
7	0.048
8	0.061
9	0.075
10	0.090
11	0.106
12	0.133

Typical Crown



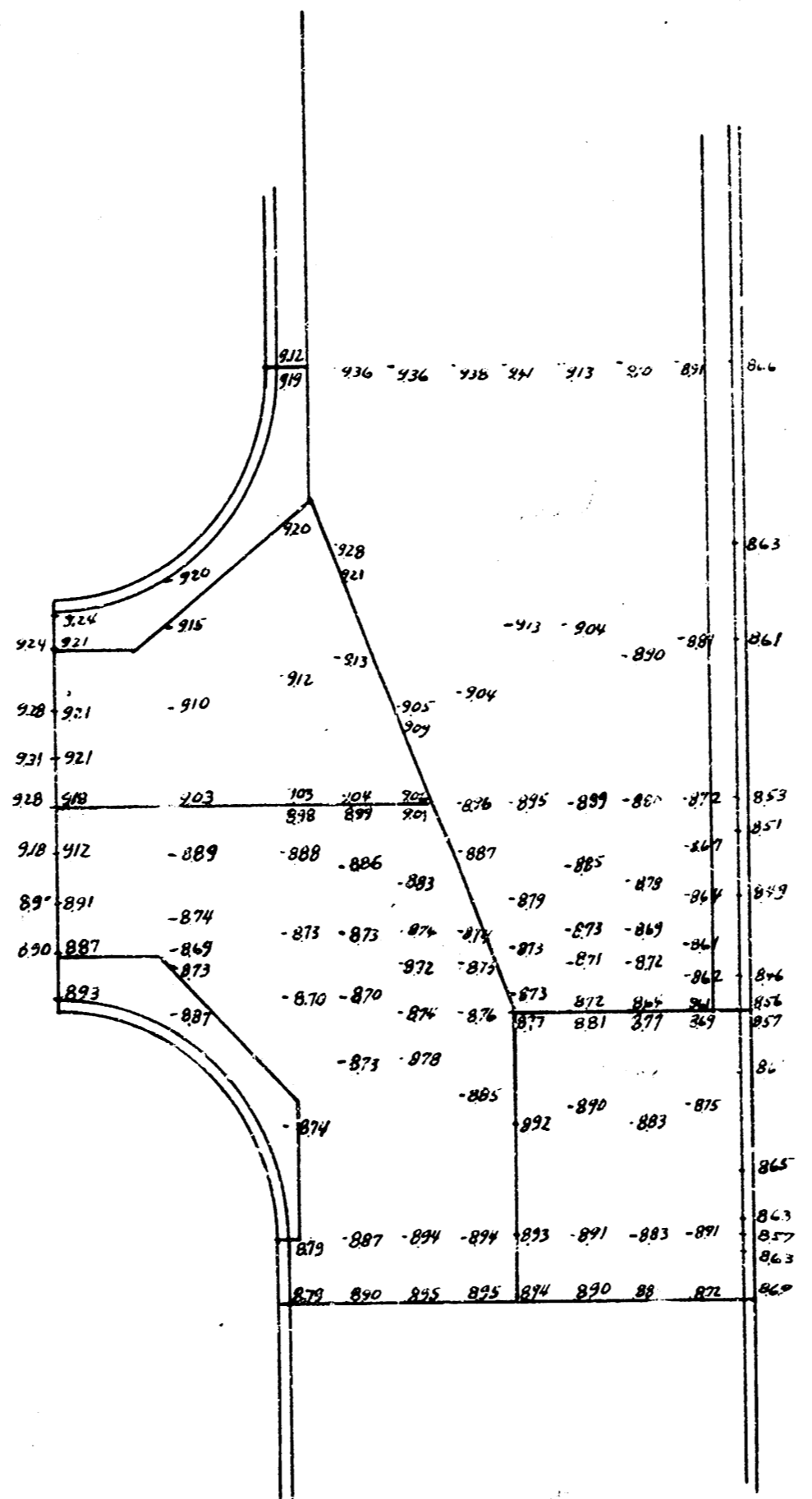
Typical Steel Pattern

NOTE:
 Build ramp type drives where
 desired. Elevation @ 8' to 20'
 0.25' above finished grade.

EXCAVATION		COMP. FILL	
PROP.	CITY	PROP.	CITY
230	173	67.5	4.6
23	17	6.8	0.1
253	190	74.3	0.7

FILBERTS

E.L. Oliver to W.L. Glendale
 24" Conc. & Cb.
 City of Wichita, Kansas
 B.E. Smith, City Engineer
 Date: 11-11-1922 Proj. No. 011-26



Ver. 4-1162
 Study JAK 22