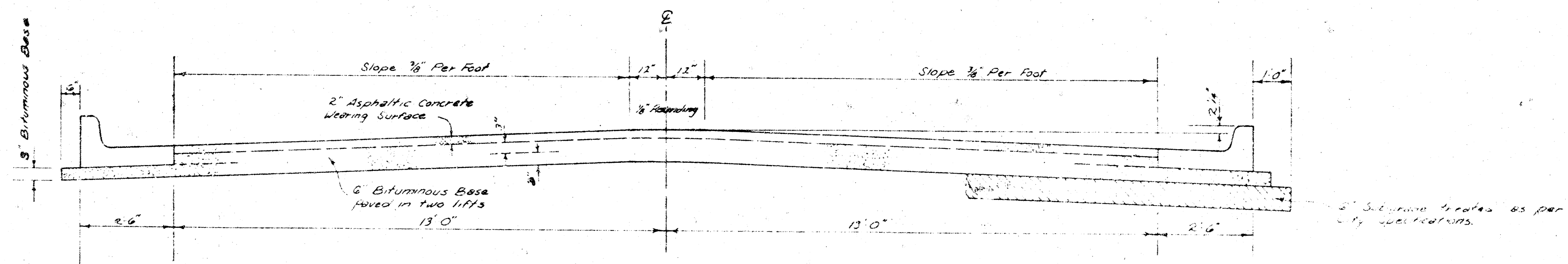


EISENHOWER AVE.
N.L. CENTRAL AVE. TO S.L. ELM ST.

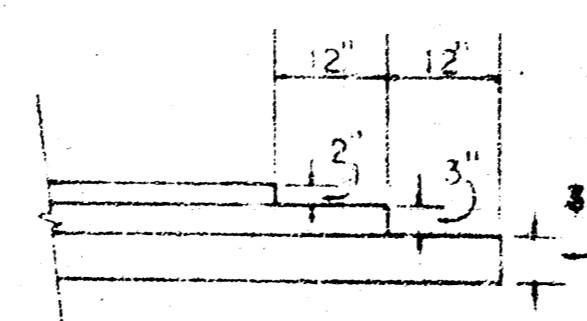


TYPICAL SECTION

31' ASPHALTIC CONCRETE PAVEMENT WITH BITUMINOUS BASE

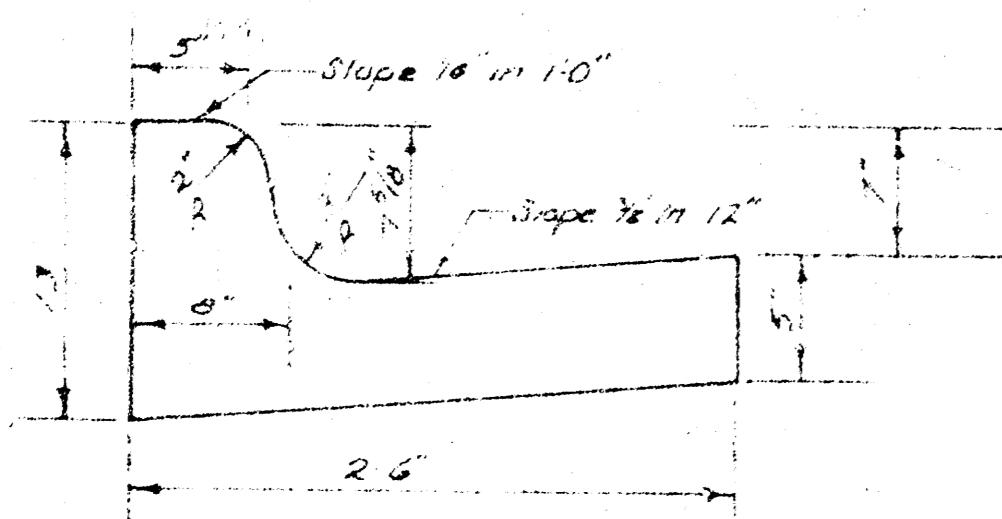
A TACK COAT OF EMULSIFIED ASPHALT (SS-IH) SHALL BE APPLIED AT AN APPROXIMATE RATE OF 0.05 GALLONS PER SQ YD BETWEEN LIFTS OF ASPHALTIC MATERIALS WHEN ORDERED BY THE ENGINEER. TACK COAT WILL NOT BE PAID FOR DIRECTLY AND SHALL BE CONSIDERED AS SUBSIDIARY TO PRICE BID FOR ASPHALTIC PAVEMENT. BITUMINOUS BASE AND ASPHALTIC CONCRETE WEARING SURFACE SHALL BE PLACED WITH A LAYDOWN MACHINE HAVING AUTOMATIC ELECTRONIC CONTROLS FOR CROWN AND GRADE. CONSTRUCTION JOINTS IN EACH LIFT SHALL BE STAGGERED A MINIMUM DISTANCE OF 1' WITH JOINTS IN PRECEDING LIFTS AND SUCH THAT A JOINT WILL BE CONSTRUCTED ON THE PAVEMENT CENTERLINE IN THE TOP LIFT.

DETAIL OF TRANSVERSE CONSTRUCTION JOINTS

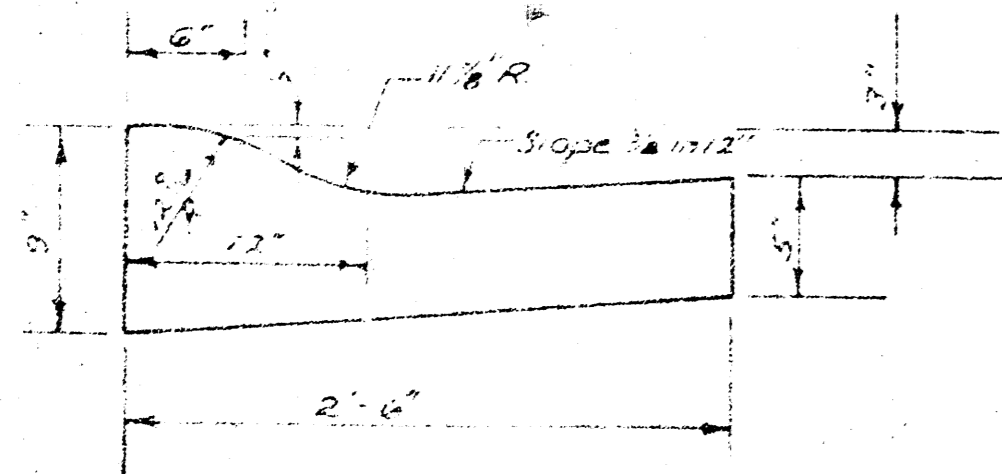


TRANSVERSE CONSTRUCTION JOINTS SHALL BE CONSTRUCTED IN FLEXIBLE BASE PAVEMENTS AT LOCATIONS WHERE PAVEMENT TEMPORARILY ENDS TO FACILITATE FUTURE PAVEMENT CONSTRUCTION AS SHOWN BY DETAIL. THE COST OF CONSTRUCTING THE TRANSVERSE CONSTRUCTION JOINTS SHALL NOT BE MEASURED OR PAID FOR DIRECTLY BUT SHALL BE INCLUDED IN THE BID PRICE FOR SQUARE YARDS OF ASPHALTIC CONCRETE PAVEMENT.

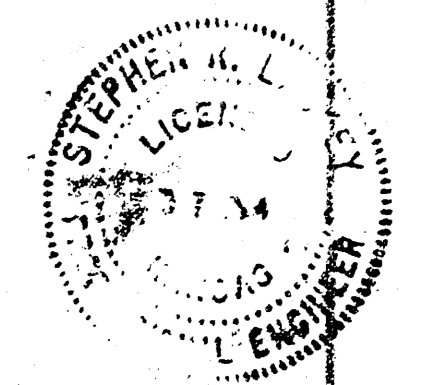
COMBINED CURB & GUTTER



ROLL TYPE CURB & GUTTER



The 2'0\"/>



1/4

CITY OF WICHITA, KANSAS

DEPARTMENT OF PUBLIC WORKS — ENGINEERING

R. V. LINN CITY ENGINEER

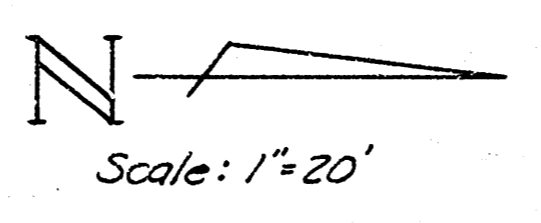
DATE _____

PROJ. NO. 47-6 245 80809 000 000 001

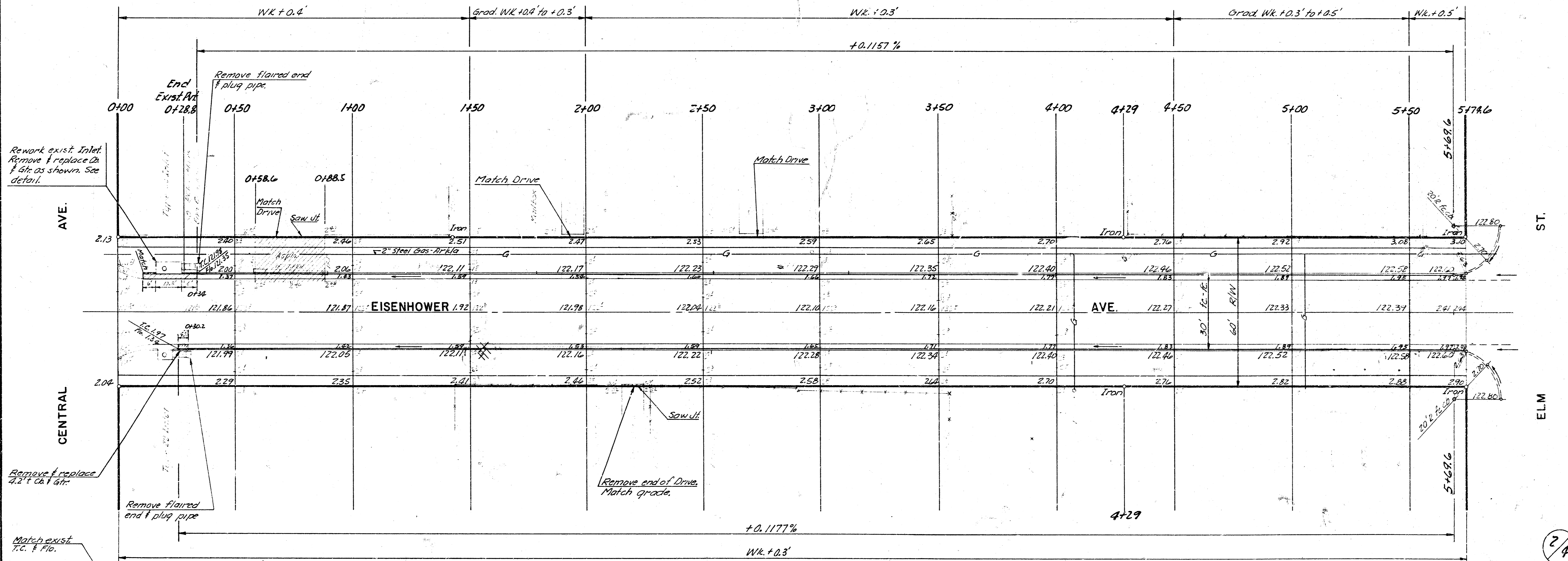
1/2

B.M. 123.29 City Std. Disc 39ft East and 92ft North of @ both Hoover and Central.
 B.M. 125.04 Northeast corner porch of House at 709 Eisenhower.

NOTE: Equivalent of 1-30' & 6-20' drives can be constructed on this project.



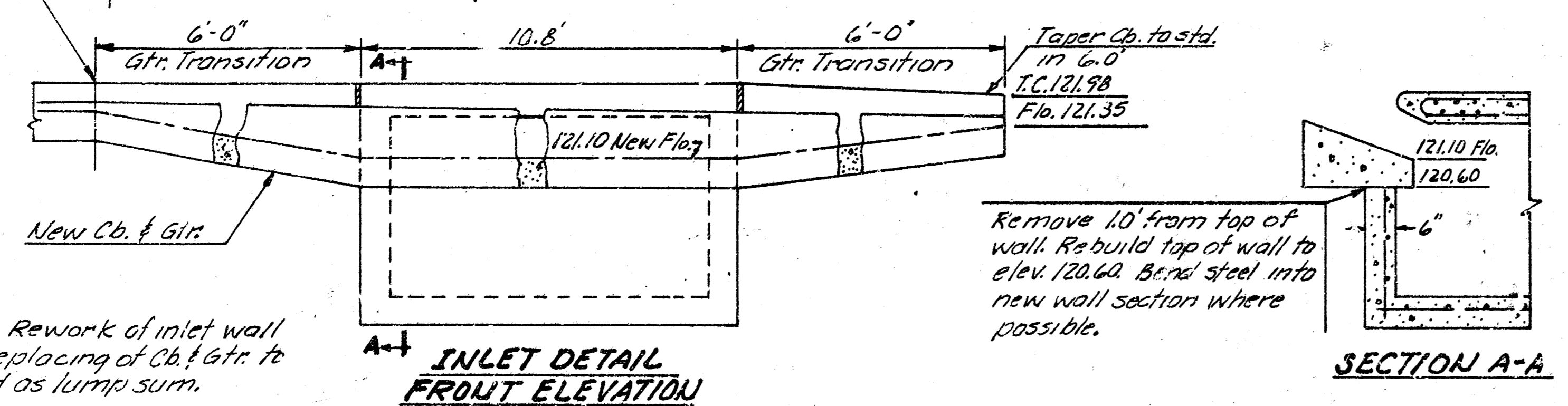
Survey M.S.U.
 Plans & F.O.C.
 E.K.
 C. H. H. P. P.



Rework exist. Inlet. Remove & replace Ch. & Gtr. as shown. See detail.

Remove & replace 4.2' Ch. & Gtr.

Match exist. T.C. & Flo.



NOTE: Rework of inlet wall and replacing of Ch. & Gtr. to be bid as lump sum.

Remove 10' from top of wall. Rebuild top of wall to elev. 120.60. Bend steel into new wall section where possible.

NOTE: Trees to be removed are marked thus except that any tree marked for removal, which in the opinion of the Engineer can be saved, shall be spared.

SUB-GRADE
 TYPE OF SUB-GRADE TREATMENT SHALL BE DETERMINED BY THE FIELD ENGINEER. SUB-GRADE TREATMENT MAY CONSIST OF LIME TREATMENT, CEMENT TREATMENT, SUB-GRADE MODIFICATION, OR ANY COMBINATION OF THESE.

Total Earthwork Excavation
 738.3 C.Y.
 +10% 73.8
 812.1 C.Y.

EISENHOWER AVE.
 N.L. CENTRAL AVE. TO
 S.L. ELM ST.
 CITY OF WICHITA, KANSAS
 R.W. LINN CITY ENGINEER
 DATE
 PROJ. NO. 472 76 245 80809 000 000 001