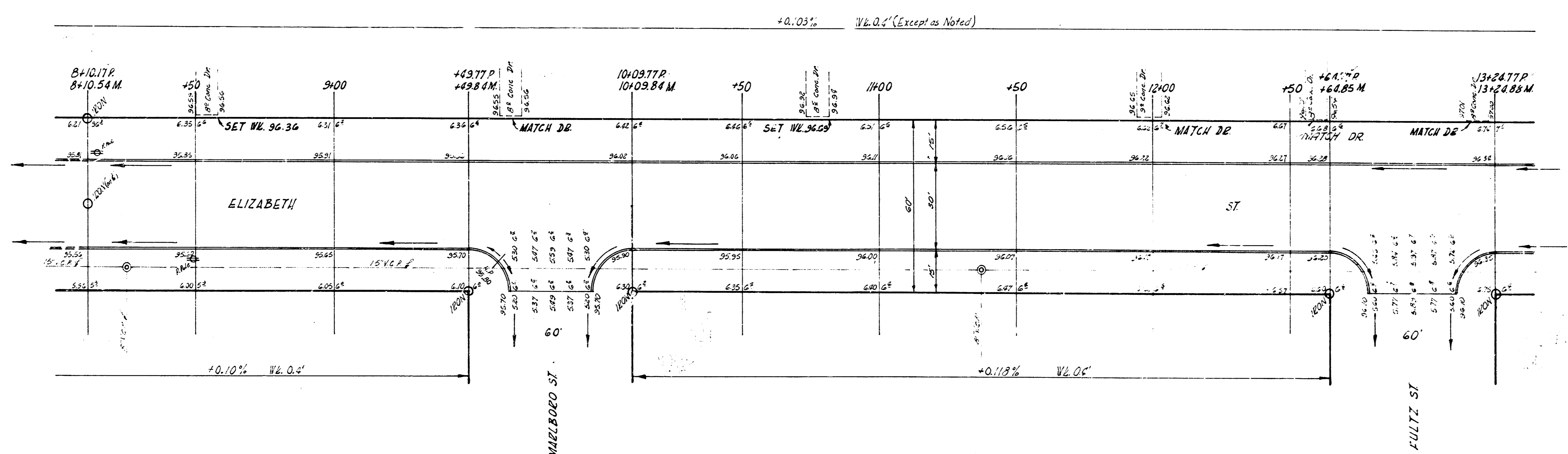
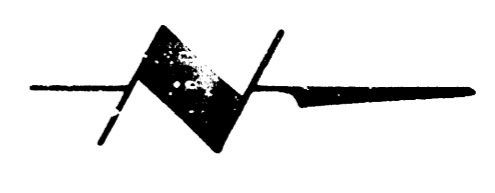
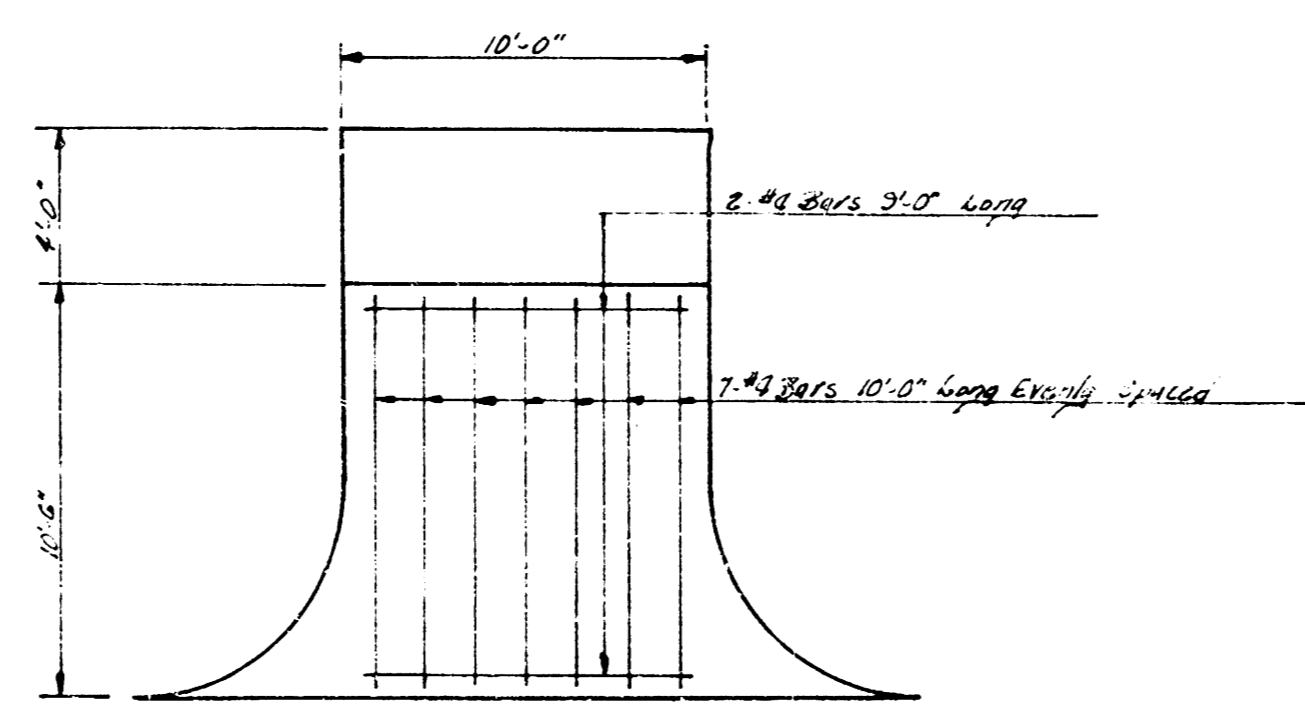


B.M. 97.30 S.E. Cor. Conc. Patch No. #1502 W. 30th St. So.  
 B.M. 98.21 S.E. Cor. Conc. Patch No. #3015 Elizabeth  
 B.M. 99.02 S.E. Cor. Conc. Patch No. #2915 Elizabeth  
 B.M. 99.135 S.W. Cor. 1st Step No. #1206 W. 21st St. So.

Stations on W Line of Elizabeth



NOTE TO FIELD ENGINEER & CONTRACTOR—  
 The drives on the East side of Elizabeth  
 to be reinforced. See detail at right.



STEEL REINFORCING FOR DRIVES EAST SIDE ELIZABETH  
 NOT TO SCALE



ELIZABETH ST.  
 S.L. OF REPLAY BLS. B.C. & D.  
 PANWRANTZ 2ND ADD - S.L. REGAL  
 30' CONC. & C.B.  
 CITY OF WICHITA, KANS.  
 B.E. SMITH CITY ENGINEER  
 JAN., 1955 PROJ. NO. C14-30

1/6

GLAWAY JAS. W. JAZ JAC



