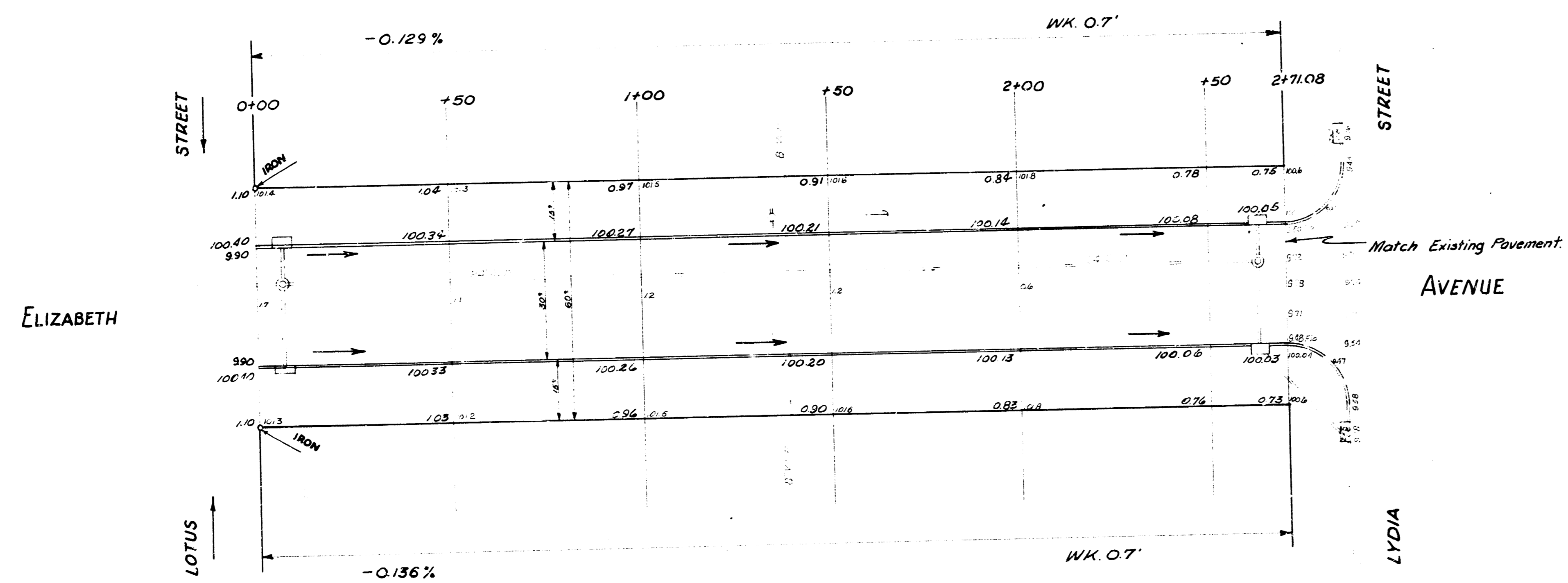


B.M. 102 SW cor conc parch Ho# 1444 So. Lydia.

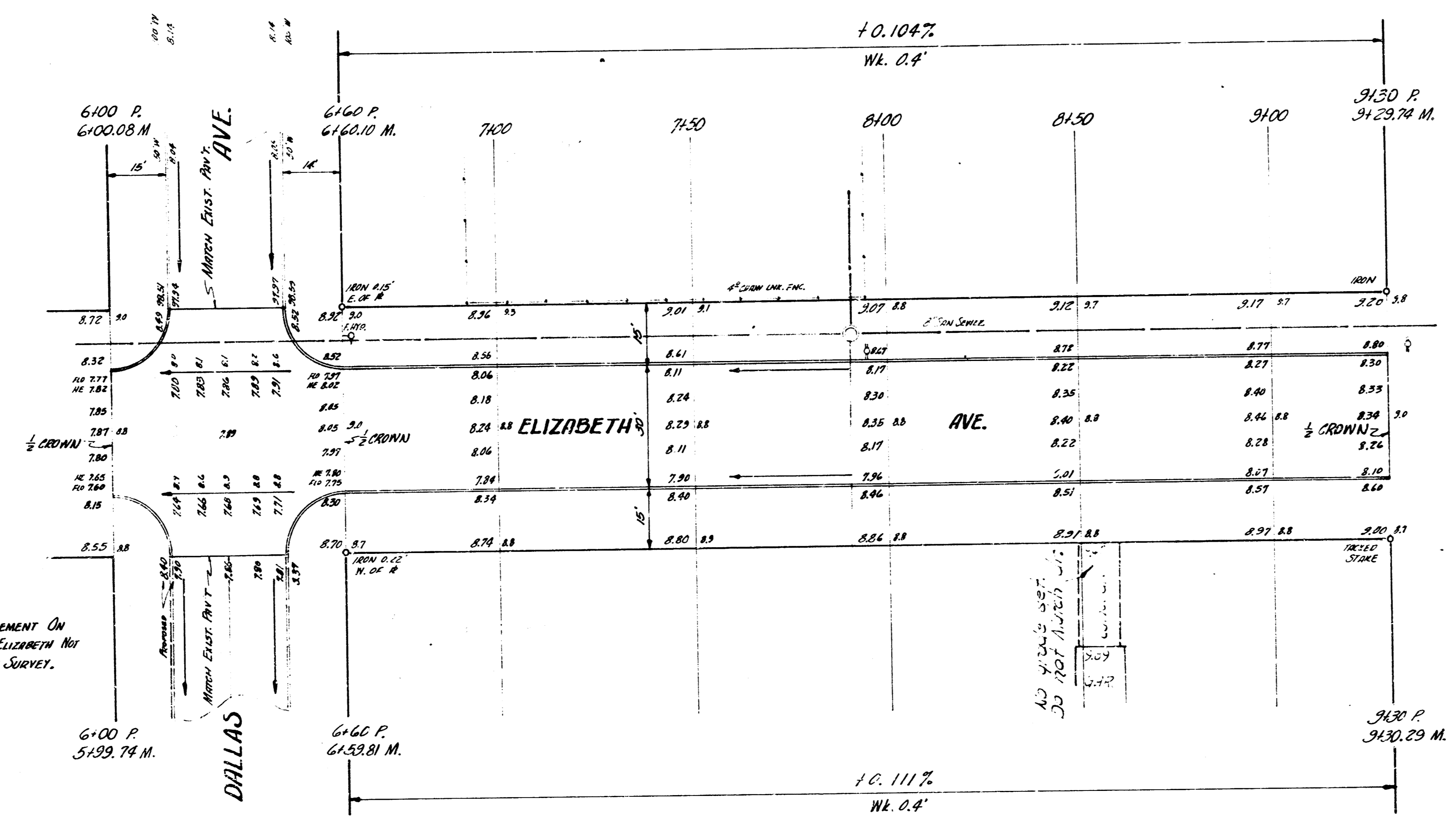


1/2

ELIZABETH AVENUE  
 NL Lotus to SL Lydia  
 30' Conc & Cb  
 CITY OF WICHITA, KANSAS  
 B. E. SMITH CITY ENGINEER  
 APRIL 1958 PROJ. NO. C17-5



SCALE 1"=20'



NOTE:  
 S&S PAVEMENT ON  
 DALLAS E. OF ELIZABETH NOT  
 IN PLACE TIME OF SURVEY.

227.0 30.00  
 1702.7 10.12

ELIZABETH AVE.  
 M. GREENFIELD - S1. CRAWFORD  
 PROJ. NO. C16-129

24