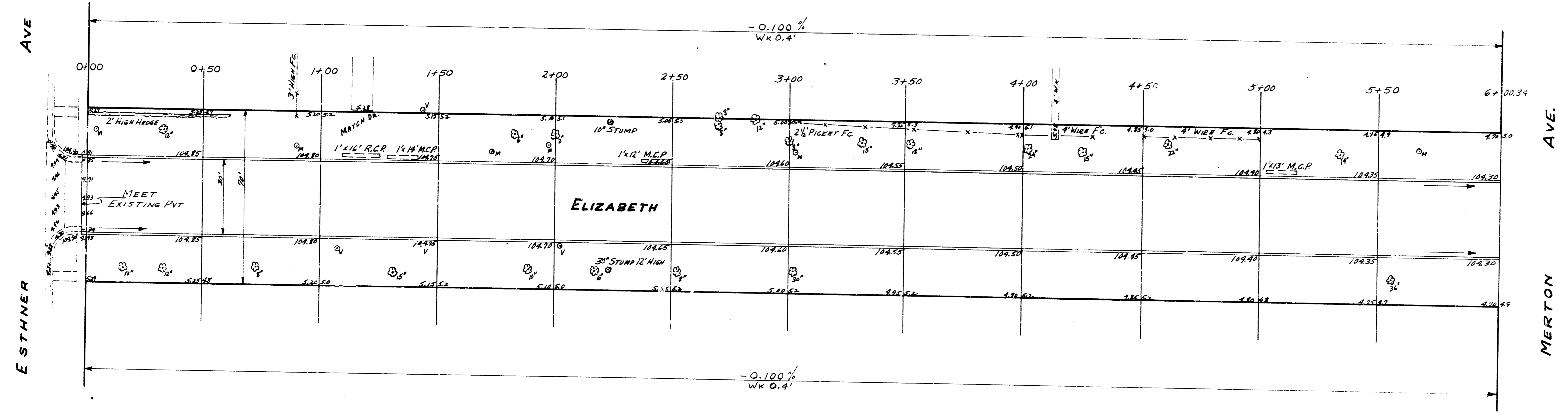


B.M. 104.33 "6" IN GLOVE E. CB ELIZABETH N.L. ESTHNER.
 B.M. 106.29 1/2" SPIKE E. FACE P. POLE N.W. COR. MERTON & ELIZABETH.
 B.M. 106.68 S.E. CORNER 1ST STEP NO. 1593 N.W. COR. ANNE-LEE & ELIZABETH.
 CHIRNING N ON E.

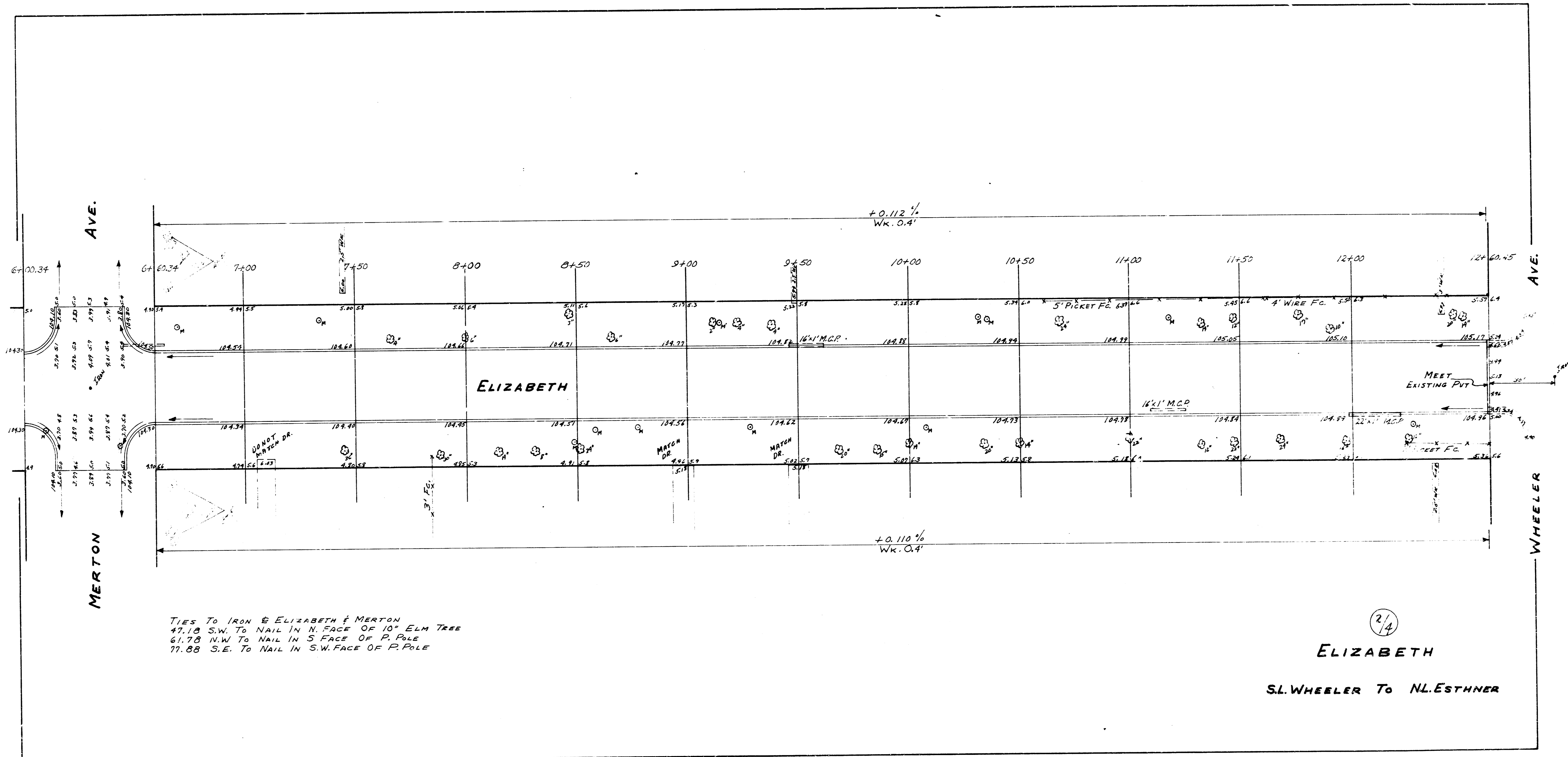


1/4

CITY 266-1
 APPERT 3-4-55
 110-214.5
 3759.2 0120 007



ELIZABETH
 SL WHEELER TO NL ESTHNER
 30' CONC. & CB.
 CITY OF WICHITA KAN.
 B.E. SMITH CITY ENGINEER
 JAN. 1955 PROJ. NO. C14-395



TIES TO IRON @ ELIZABETH & MERTON
 47.18 S.W. TO NAIL IN N. FACE OF 10" ELM TREE
 61.78 N.W. TO NAIL IN S. FACE OF P. POLE
 77.88 S.E. TO NAIL IN S.W. FACE OF P. POLE

(2/4)
ELIZABETH
 S.L. WHEELER TO N.L. ESTHNER