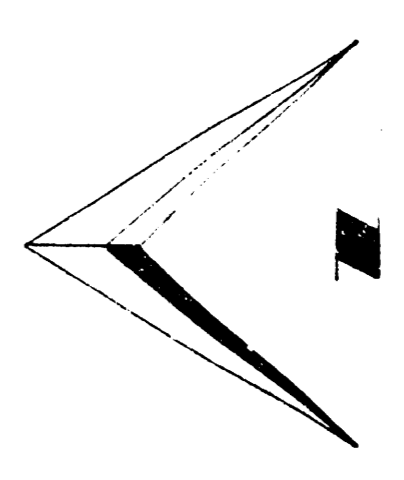


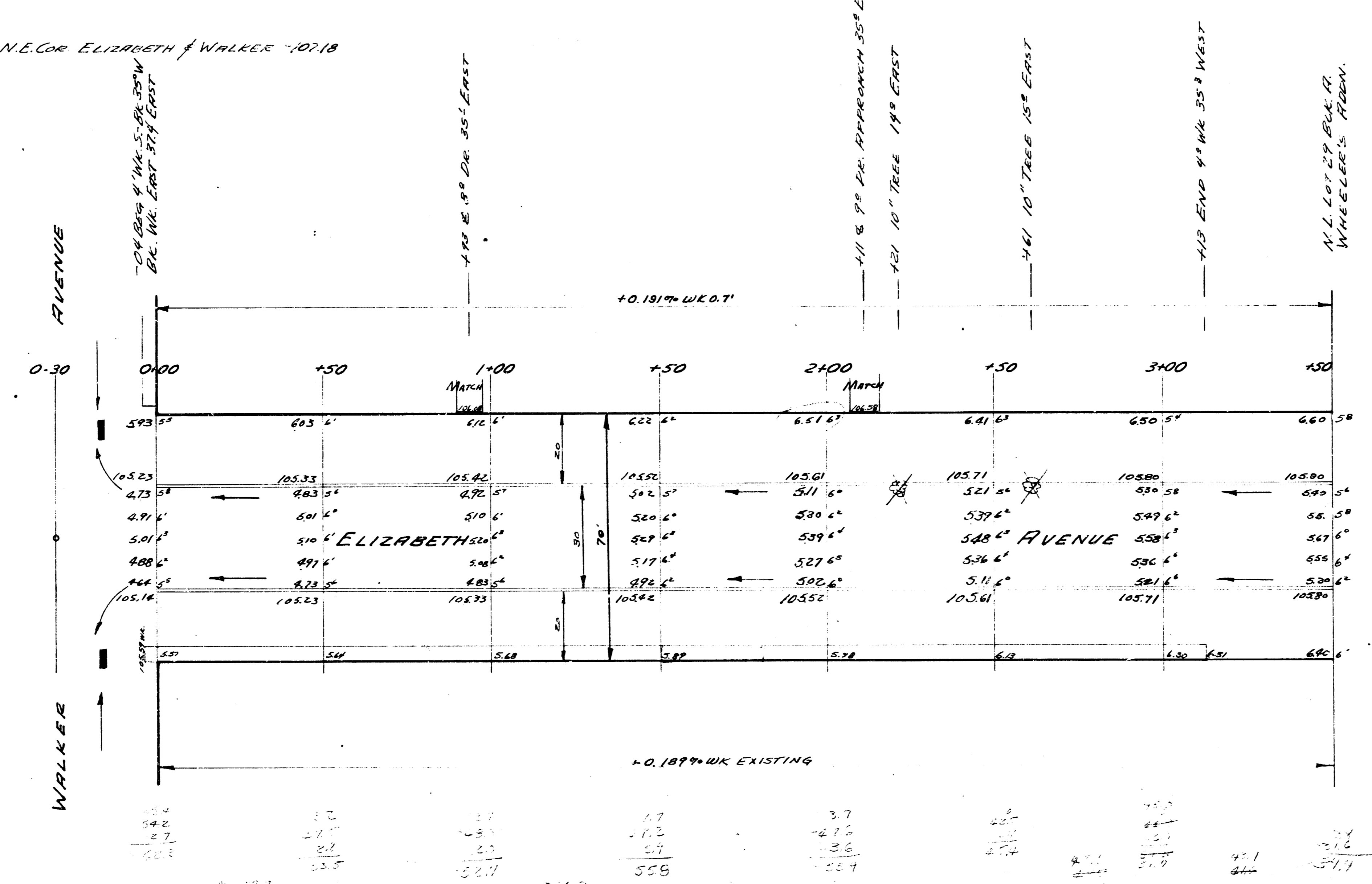
46Y

31' MIN MUELLER FIRE HYD N.E. COR ELIZABETH & WALKER 10718

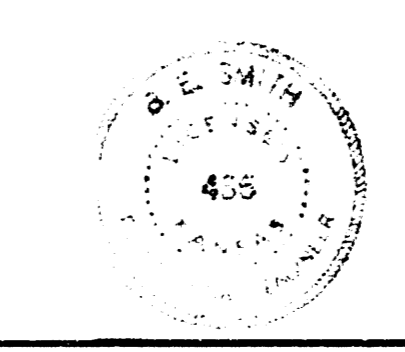
SCALE: 1"=20'



0.5
S. J. H. C.



NOTE CHAINING S. ON E OF ELIZABETH



ELIZABETH
 S. L. WALKER TO N. L. LOT 29 B. L. A
 WHEELERS ADDN.
 30' CONC. & C.B.
 CITY OF WICHITA, KANSAS
 L. K. WHITE CITY ENGINEER
 JULY 1952 PROJ. NO. C12-21