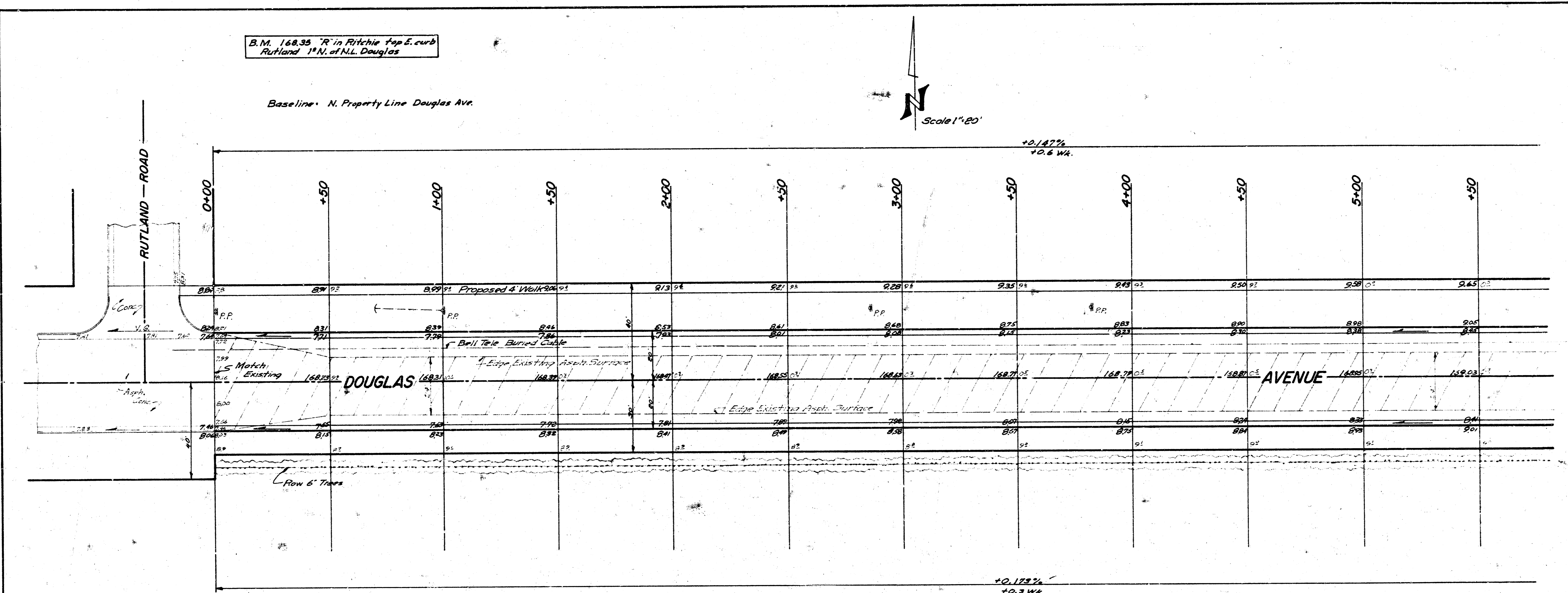
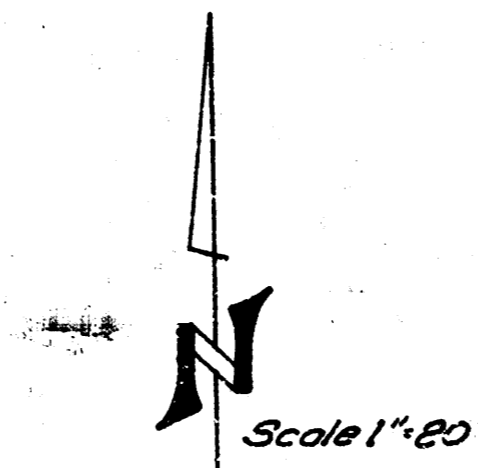




Surveyed by  
 Young, Young & Young  
 Civil Engineers  
 Wichita, Kansas

B.M. 168.35 "R" in Fitchie top E. curb  
 Rutland 1/4 N. of N.L. Douglas

Baseline - N. Property Line Douglas Ave.



Note to Field Engineer and Contractor  
 Grade and Clear Parking for Proposed  
 Sidewalk.  
 SIDEWALK TO BE CONSTRUCTED BY "OTHERS"

Exc.	Earthwork		Quantities	
	Property	City	Exc.	Comp. Fill
2,068.0 CY	Comp. Fill	12.2 CY	79.2 CY	2.1 CY
+10% 2,274.8 CY	L.E.	13.4 CY	77.7 CY	2.3 CY

Volume of existing A.C. Mat is not  
 included in Excavation Quantities

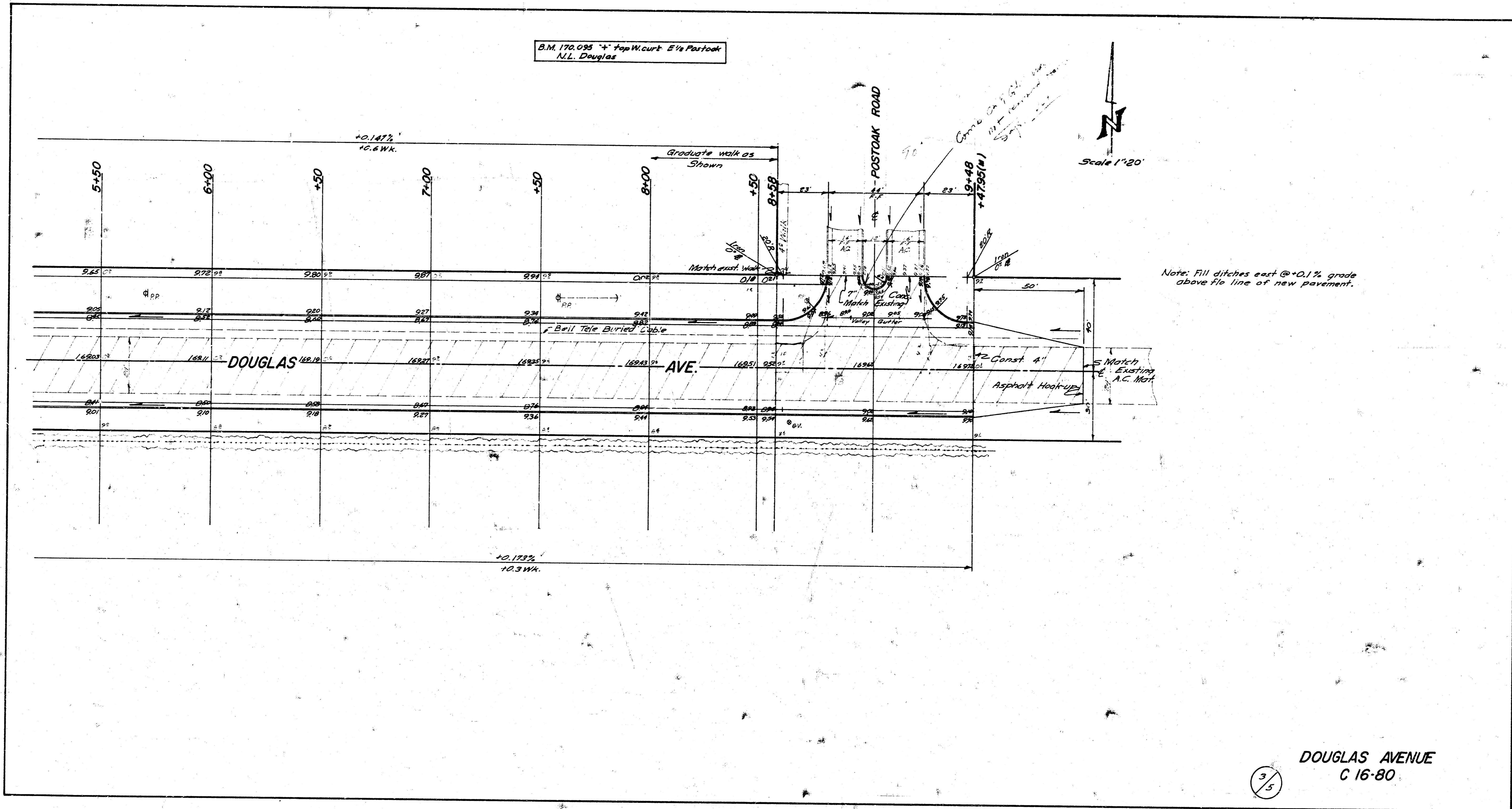


2/5

**DOUGLAS AVENUE**  
 From E.L. RUTLAND ROAD  
 To E.L. POSTOAK ROAD  
 36'-2'-40' Asph. Conc.  
 B.E. SMITH CITY ENGINEER  
 CITY OF WICHITA, KANSAS  
 DATE MAY 1957 \* C 16-80

Survey  
Planning  
Design  
Construction

B.M. 170.095 + top W. curb E 1/4 Postoak  
N.L. Douglas



Note: Fill ditches east @ +0.1% grade  
above 1/2 line of new pavement.

DOUGLAS AVENUE  
C 16-80

3/5