

GENERAL NOTES

- UNLESS SHOWN OR STATED OTHERWISE ON THESE DRAWINGS, MATERIALS AND CONSTRUCTION SHALL BE IN ACCORDANCE WITH CITY OF WICHITA CONCRETE PAVEMENT AND ASPHALTIC CONCRETE PAVEMENT SPECIFICATIONS.
- THE CONTRACTOR SHALL BE RESPONSIBLE FOR PRESERVING PROPERTY IRONS. THE CONTRACTOR WILL BE REQUIRED TO RE-ESTABLISH ANY PROPERTY IRONS WHICH ARE DAMAGED OR DESTROYED BY HIS CONSTRUCTION OPERATIONS. SUCH IRONS SHALL BE RE-ESTABLISHED BY A LICENSED LAND SURVEYOR IN ACCORDANCE WITH STATE LAWS.
- EXISTING UTILITIES AND THEIR LOCATIONS AS SHOWN ON THE PLANS REPRESENT THE BEST INFORMATION OBTAINABLE FOR DESIGN. LOCATION INFORMATION HAS BEEN OBTAINED FROM THE VARIOUS UTILITY COMPANIES AND IS EITHER FROM COMPANY RECORD DRAWINGS OR COMPANY PROVIDED FIELD LOCATIONS. THE PLAN LOCATIONS SHOWN ARE NOT GUARANTEED. ADDITIONAL EXISTING UTILITIES MAY ALSO BE ENCOUNTERED.
- CONTRACTOR WILL BE REQUIRED TO PROVIDE A MINIMUM ADVANCE NOTICE OF FORTY-EIGHT (48) HOURS TO UTILITY COMPANIES PRIOR TO STARTING ANY EXCAVATION AS FOLLOWS:

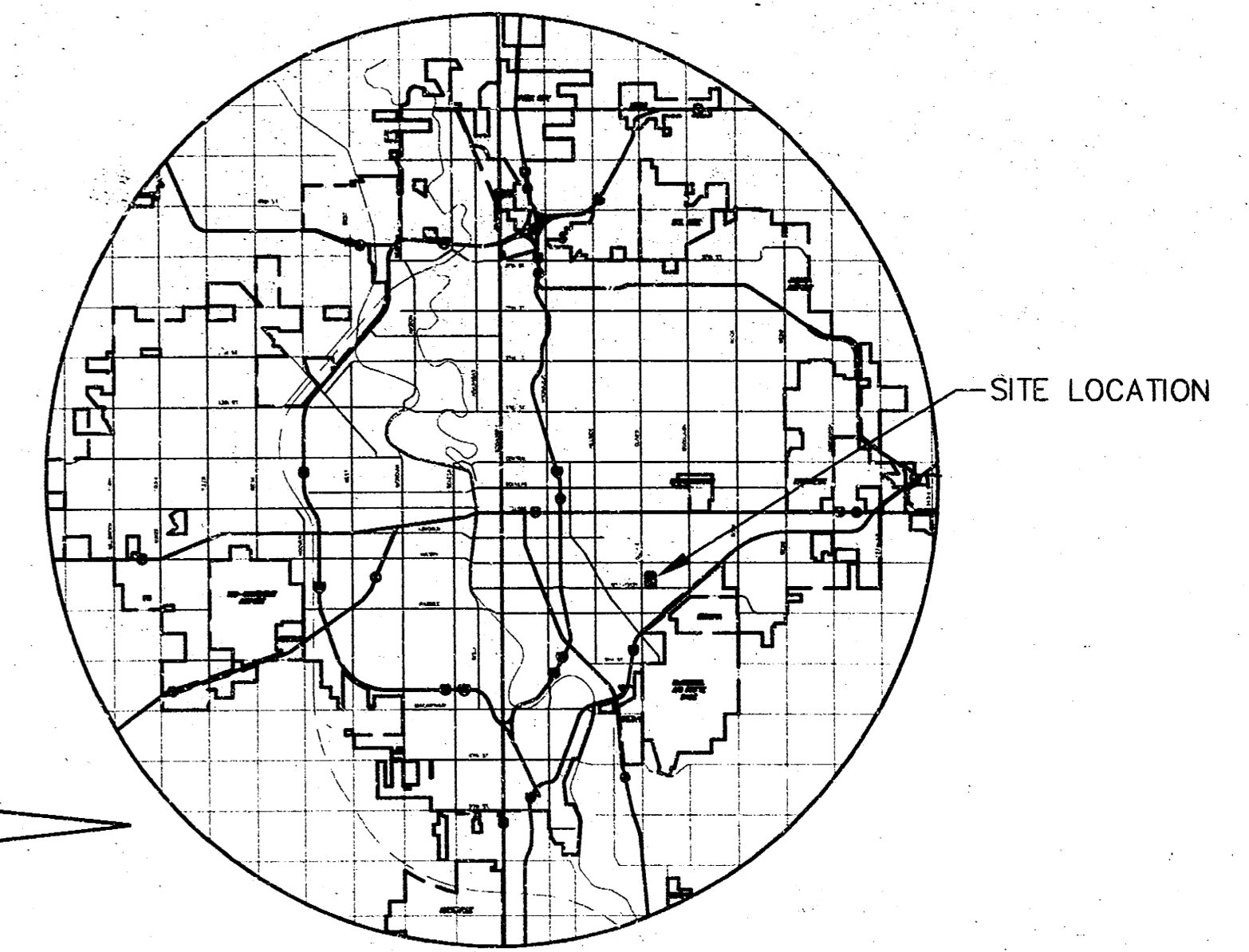
KANSAS ONE-CALL	1-800-344-7233
	687-2470 (LOCAL WICHITA)

THE CONTRACTOR MUST NOTIFY THE FOLLOWING IN CASE OF AN EMERGENCY:

SOUTHWESTERN BELL TELEPHONE COMPANY	1-800-734-7590
CABLEVISION	262-0661
K&E (GAS)	832-2012
K&E (ELECTRIC)	264-1141
CITY OF WICHITA WATER & SEWER DEPT.	268-4908

- RUBBLE FROM THE REMOVAL OF MISCELLANEOUS STRUCTURES AND EXCESS EXCAVATION WHICH IS TO BE WASTED SHALL BE DISPOSED OF ON SITES TO BE PROVIDED BY THE CONTRACTOR. THESE SITES SHALL BE APPROVED BY THE ENGINEER AS TO SUITABILITY, APPEARANCE AND SITE LOCATION. LOCATIONS THAT, IN THE OPINION OF THE ENGINEER, WILL LEAVE AN UNSIGHTLY APPEARANCE WILL NOT BE APPROVED. ALL DISPOSAL SITES MUST BE APPROVED BY THE KANSAS DEPARTMENT OF HEALTH AND ENVIRONMENT. MATERIAL EITHER STOCKPILED OR DISPOSED OF IN A FLOOD PLAIN WOULD REQUIRE A KANSAS STATE BOARD OF AGRICULTURE PERMIT. ANY MATERIAL DUMPED IN WATERS OF THE UNITED STATES OR WETLANDS IS SUBJECT TO U.S. CORPS OF ENGINEERS PERMITTING REGULATIONS. ANY MATERIAL BURIED OR STOCKPILED BEYOND APPROVED CONSTRUCTION LIMITS WOULD REQUIRE ADDITIONAL ARCHAEOLOGICAL INVESTIGATIONS UNLESS BURIED IN A PREVIOUSLY APPROVED BORROW LOCATION.
- A SAW CUT OF AT LEAST ONE-HALF THE DEPTH OF THE EXISTING SURFACE COURSES OR ONE-FOURTH THE DEPTH OF THE EXISTING TOTAL PAVEMENT THICKNESS SHALL BE PROVIDED AT LOCATIONS WHERE PROPOSED CONSTRUCTION ABUTS AN EXISTING SURFACE OR PAVEMENT FOR WHICH PARTIAL REMOVAL OF THAT SURFACE OR PAVEMENT IS REQUIRED. SAW JOINT TO FACILITATE REMOVAL WITHIN THREE (3) FEET OF EXISTING JOINTS WILL NOT BE PERMITTED AND FOR SUCH INSTANCES THE LIMITS OF REMOVAL SHALL EXTEND TO THE EXISTING JOINT. SUCH SAW CUTS WILL NOT BE PAID FOR DIRECTLY AND THIS COST SHALL BE CONSIDERED AS SUBSIDIARY TO THE REMOVAL OF SURFACE OR PAVEMENT.
- TREES TO BE REMOVED ARE MARKED ALL TREES WHICH IN THE OPINION OF THE FIELD ENGINEER CAN BE SAVED SHALL BE SAVED. REMOVAL OF TREES SHALL BE CONSIDERED AS SUBSIDIARY TO SITE PREPARATION & RESTORATION.
- ALL DISTURBED AREAS TO BE SEEDED WITH RYE GRASS AT A RATE OF 200LBS. / ACRE WITHIN 10 DAYS OF CONSTRUCTION. COST SHALL BE CONSIDERED AS SUBSIDIARY TO SITE PREPARATION & RESTORATION.

PRIVATE PAVING PLANS FOR
ALLEN ELEMENTARY SCHOOL
PRIVATE PROJECT NO. 134 PPP
CITY OF WICHITA, KANSAS
MICHAEL E. LINDEBAK, CITY ENGINEER
OCA NO. 607879



SCALE: 1" = 100'

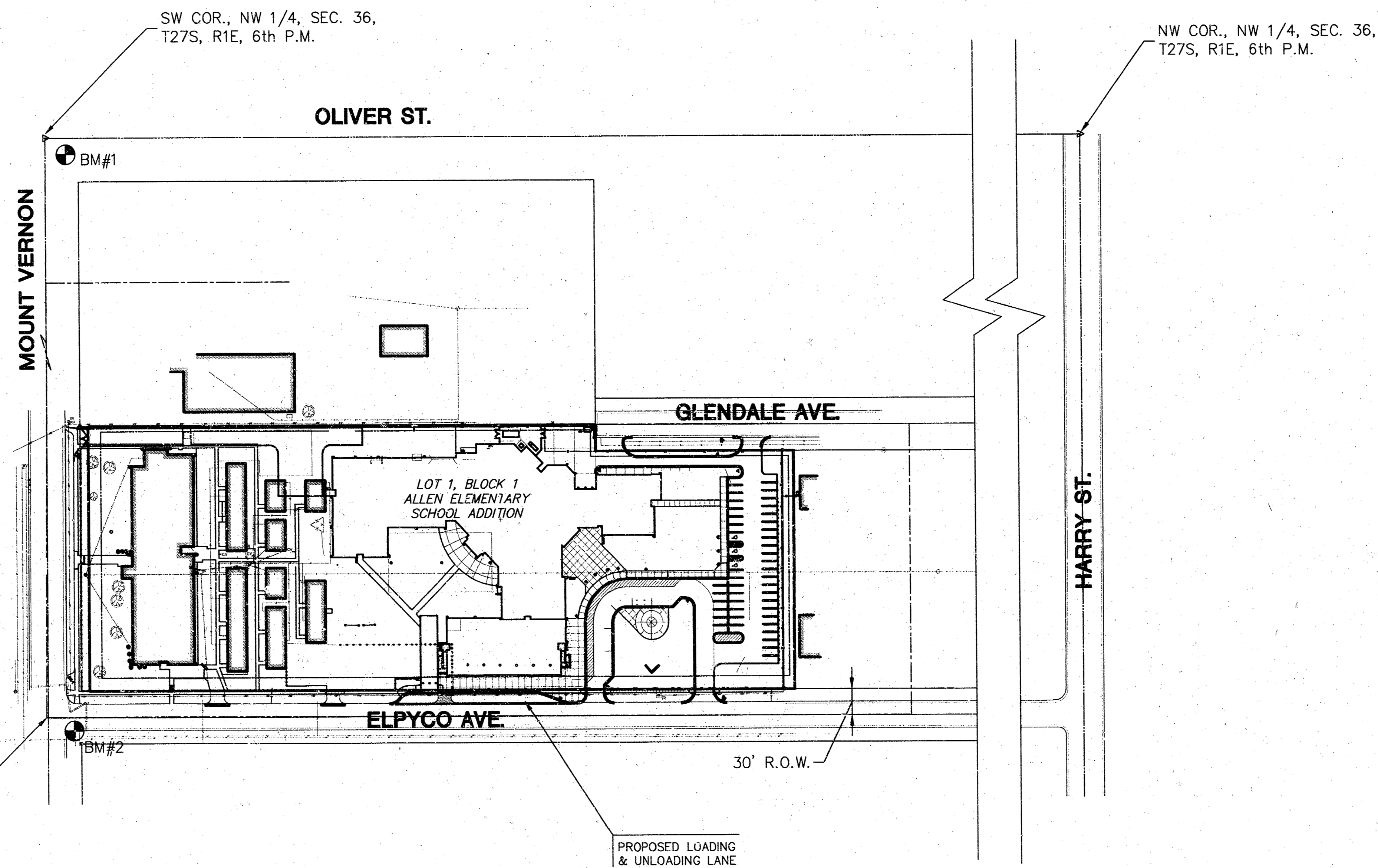
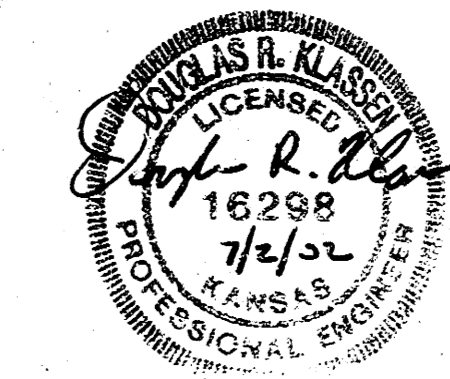
LOCATION MAP

INDEX TO DRAWINGS

SHEET NO.	DESCRIPTION
1	TITLE SHEET
2	PLAN
3	DETAILS

BENCHMARKS

- BM#1 C.O.W. benchmark top of brass tap at NE corner of Mount Vernon and Oliver Street. Elevation = 148.60' (city datum)
- BM#2 Top of North curb return at NE corner of Elpyco Ave. and Mt. Vernon. Elevation = 141.33 (city datum)



APPROVED AS NOTED
 BY CITY ENGINEER OF WICHITA

PAVING *VRH 7/2/02*

NOTE TO CONTRACTOR

INSPECTION AND TESTING FOR THIS PROJECT IS TO BE PROVIDED BY A LICENSED CONSULTING ENGINEERING FIRM UNDER CONTRACT WITH THE OWNER/DEVELOPER. SAID INSPECTION TO BE IN ACCORDANCE WITH THE CITY OF WICHITA STANDARD CONSTRUCTION ENGINEERING PRACTICES AND CERTIFIED BY A LICENSED PROFESSIONAL ENGINEER. NO WORK SHALL BE PERFORMED IN DEDICATED EASEMENTS OR THE PUBLIC RIGHT-OF-WAY BY THE CONTRACTOR WITHOUT SUCH INSPECTION NOR SHALL ANY WORK BE COMMENCED IN DEDICATED EASEMENTS OR PUBLIC RIGHT-OF-WAY WITHOUT WRITTEN AUTHORIZATION BY THE CITY ENGINEER.



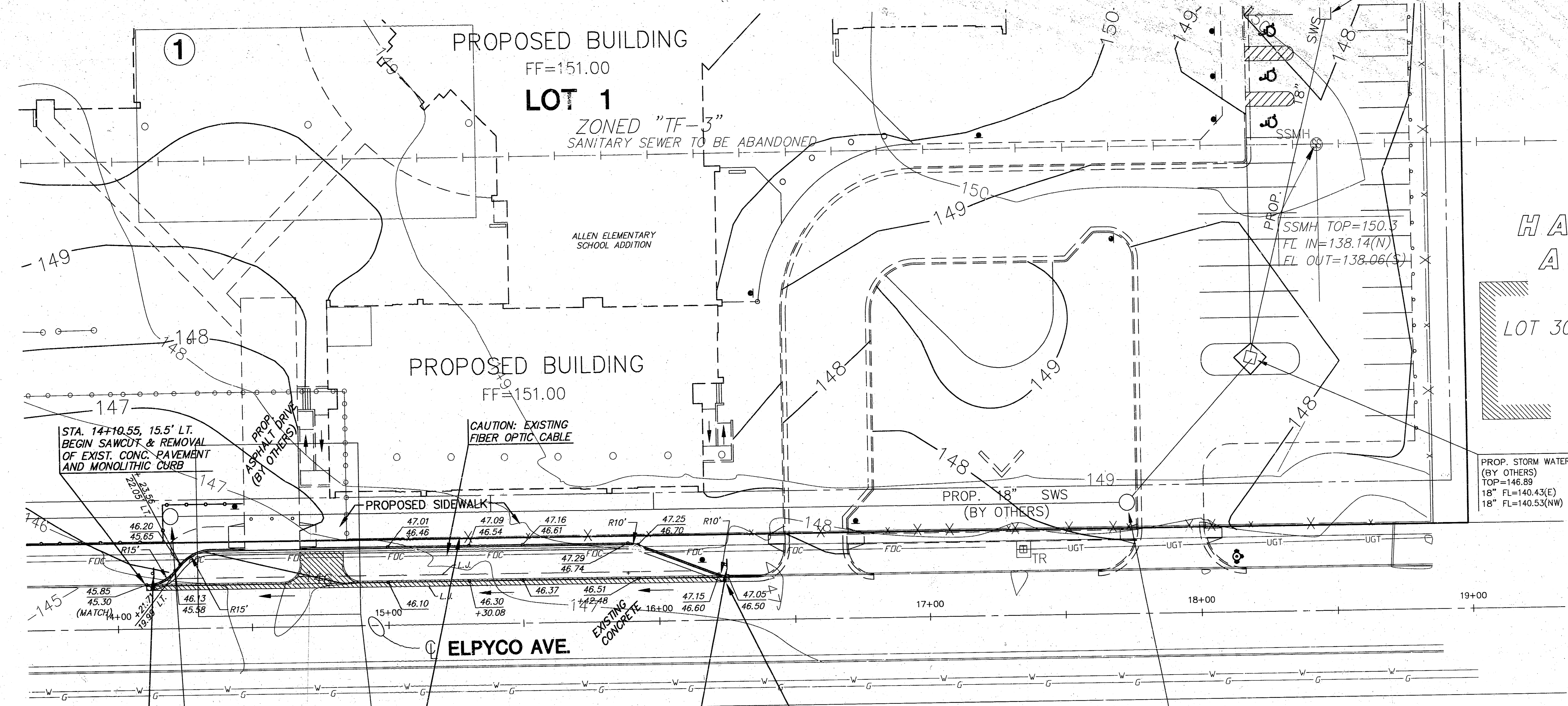
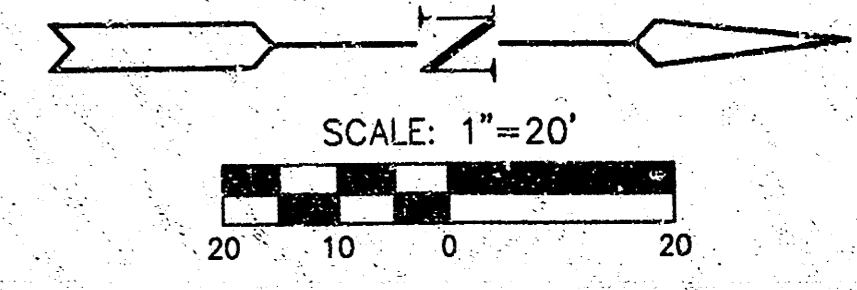
411 N. WEBB ROAD
 WICHITA, KS 67206
 316-684-9500

ALLEN ELEMENTARY SCHOOL

PROJECT NAME
PAVING
TITLE SHEET
 SHEET TITLE

DK	NRP	DK
DESIGN BY:	DRAWN BY:	CHECKED BY:
MAY 2002	PAVTITLE	1 / 3
DATE	DRAWING NAME	SHEET / OF

PROPOSED STORM WATER
SEWER INLET (BY OTHERS)
TOP=147.35
FL=140.91 (SE)



**GENE
HANGCOCK'S
ADDITION**

LOT 30



LEGEND

- CONC. PVMT. TO BE REMOVED
- PROPOSED SIGNS

NOTES:

1. WHERE PROPOSED PAVEMENT MEETS EXISTING PAVEMENT #4 BARS SHALL BE DRILLED INTO EXISTING PAVEMENT AT LEAST 1'-0"
2. CONTRACTION JOINTS SHALL MATCH EXISTING JOINT SPACING IN ELPYCO AVE.

STA. 14+12.76, 19.5' LT.
NO PARKING BUS STOP

PROP. STORM WATER MANHOLE
(BY OTHERS)
TOP=146.50
18" FL=138.8(S)
18" FL=138.92(N)

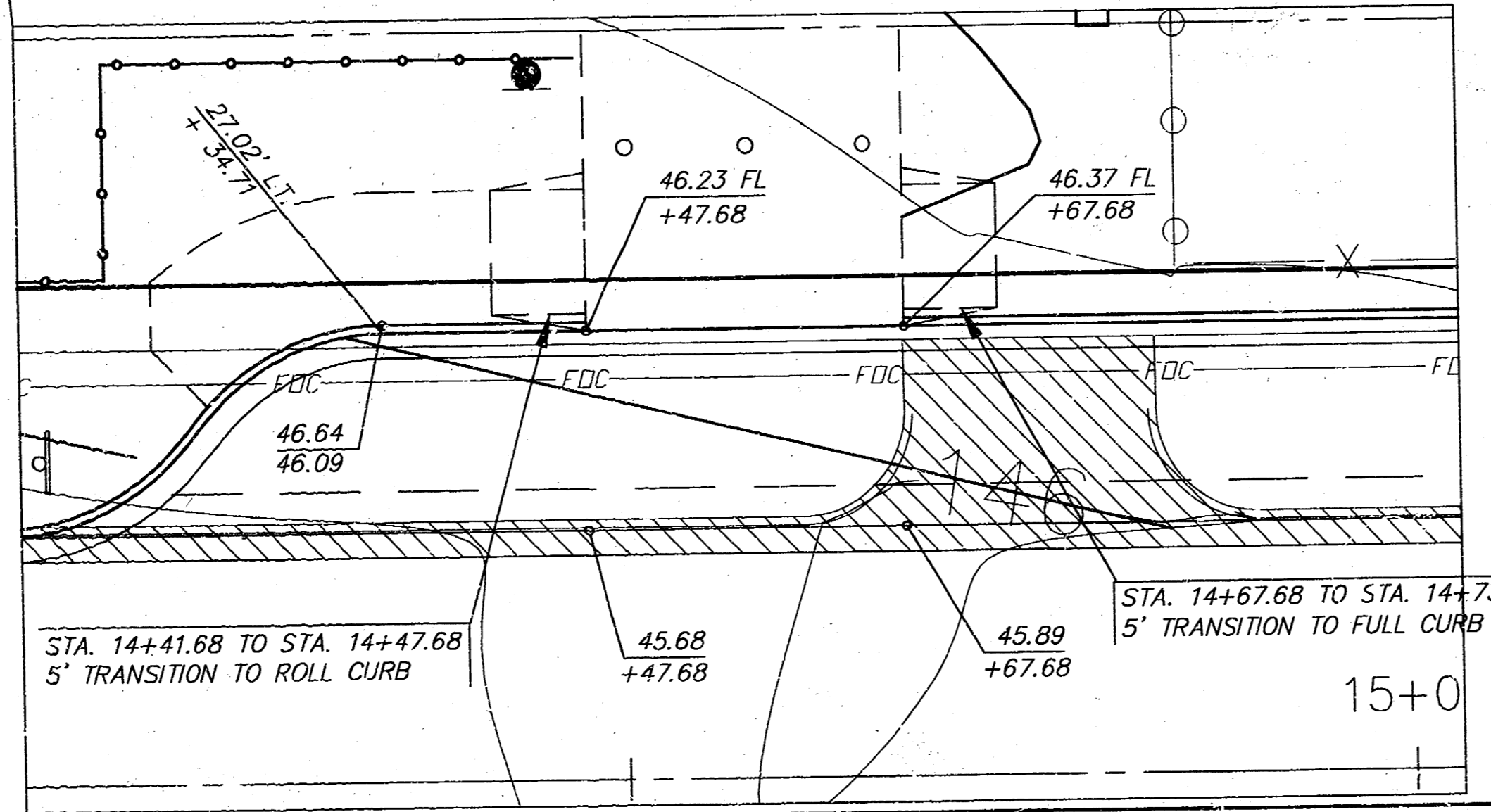
REMOVE FENCE
AS NEEDED
FOR CONSTRUCTION.
COORDINATE REMOVAL
WITH SITE CONTRACTOR.

STA. 16+24.74, 19.5' LT.
NO PARKING BUS STOP

STA. 16+24.79, 15.5' LT.
END SAWCUT & REMOVAL
OF EXIST. CONC. PAVEMENT
AND MONOLITHIC CURB

PROP. STORM WATER MANHOLE
(BY OTHERS)
TOP=148.59
18" FL=140.12(S)
18" FL=140.22(W)

BUILDER'S 3rd ADDITION



STA. 14+41.68 TO STA. 14+47.68
5' TRANSITION TO ROLL CURB

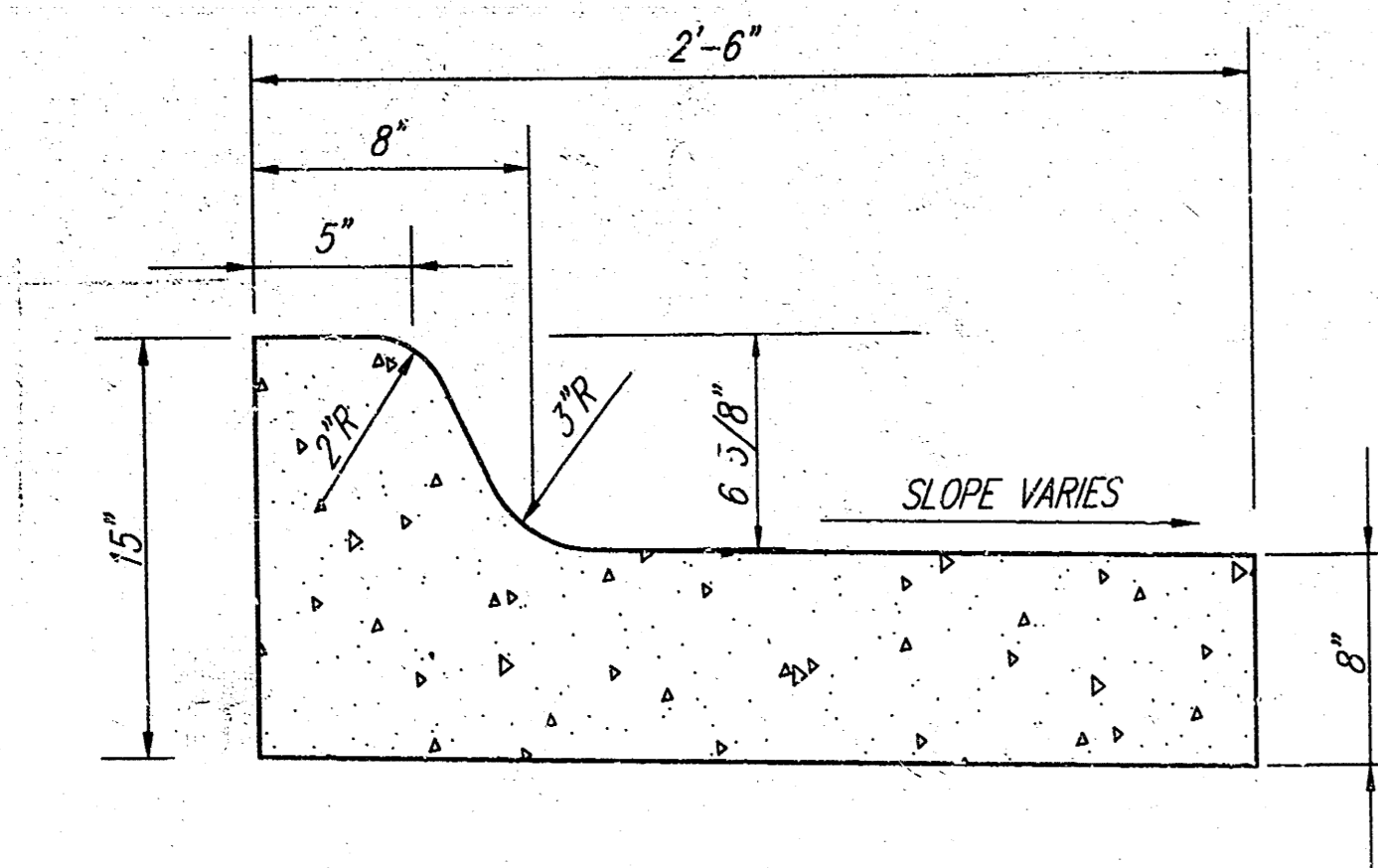
STA. 14+67.68 TO STA. 14+73.68
5' TRANSITION TO FULL CURB



ALLEN ELEMENTARY SCHOOL
PROJECT NAME

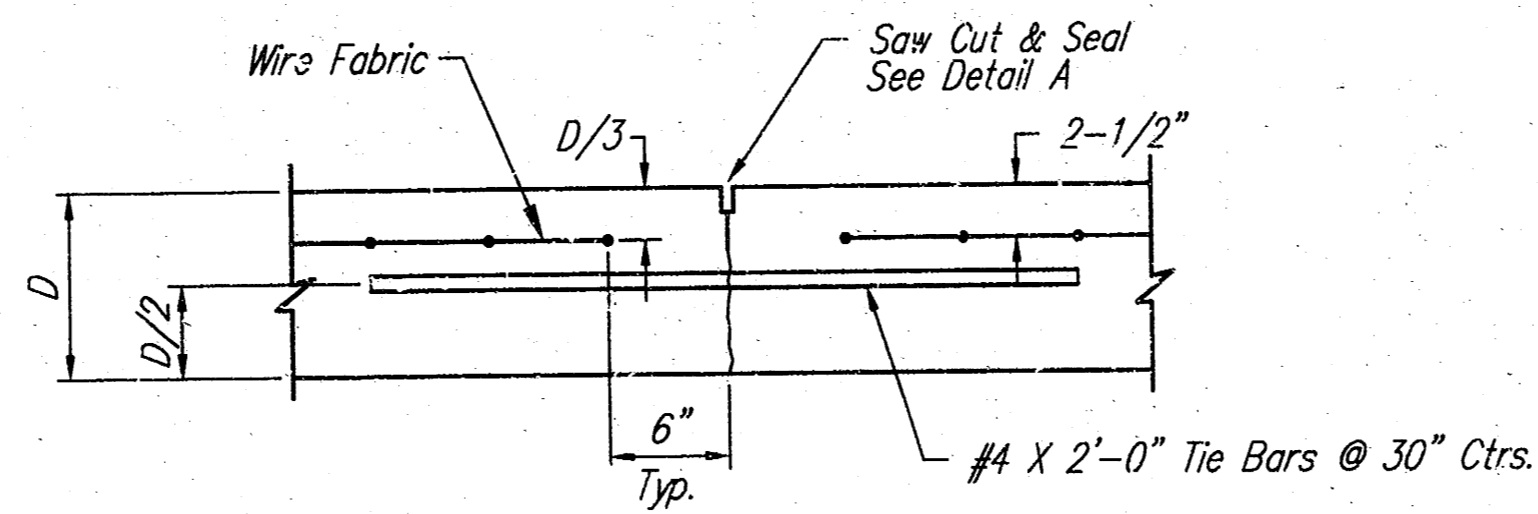
LOADING / UNLOADING DRIVE
SHEET TITLE

DK DESIGN BY:	GJR DRAWN BY:	DK CHECKED BY:
APRIL 2002 DATE	01210 JOB NO.	2 / 3 SHEET/OF

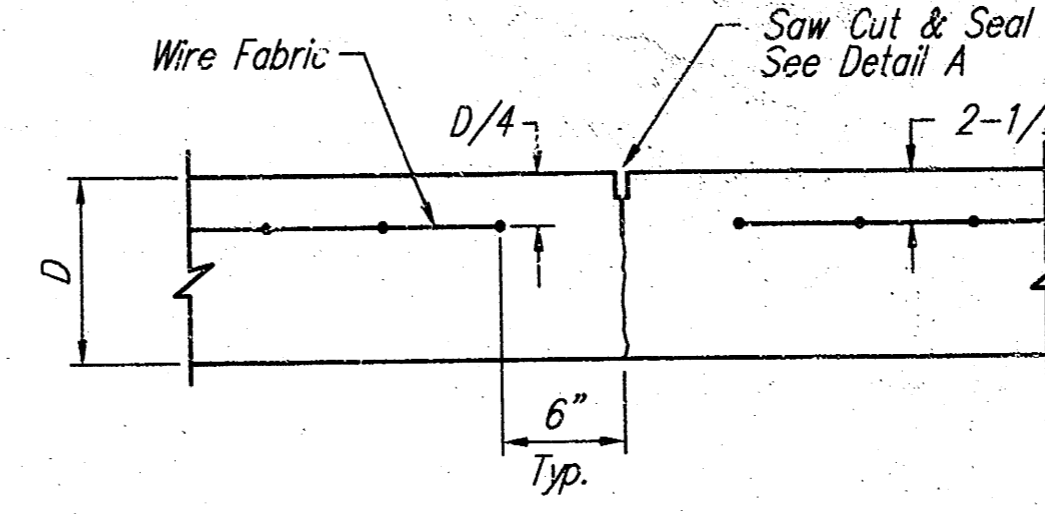


REVERSE COMBINED CURB & GUTTER

SCALE: NONE



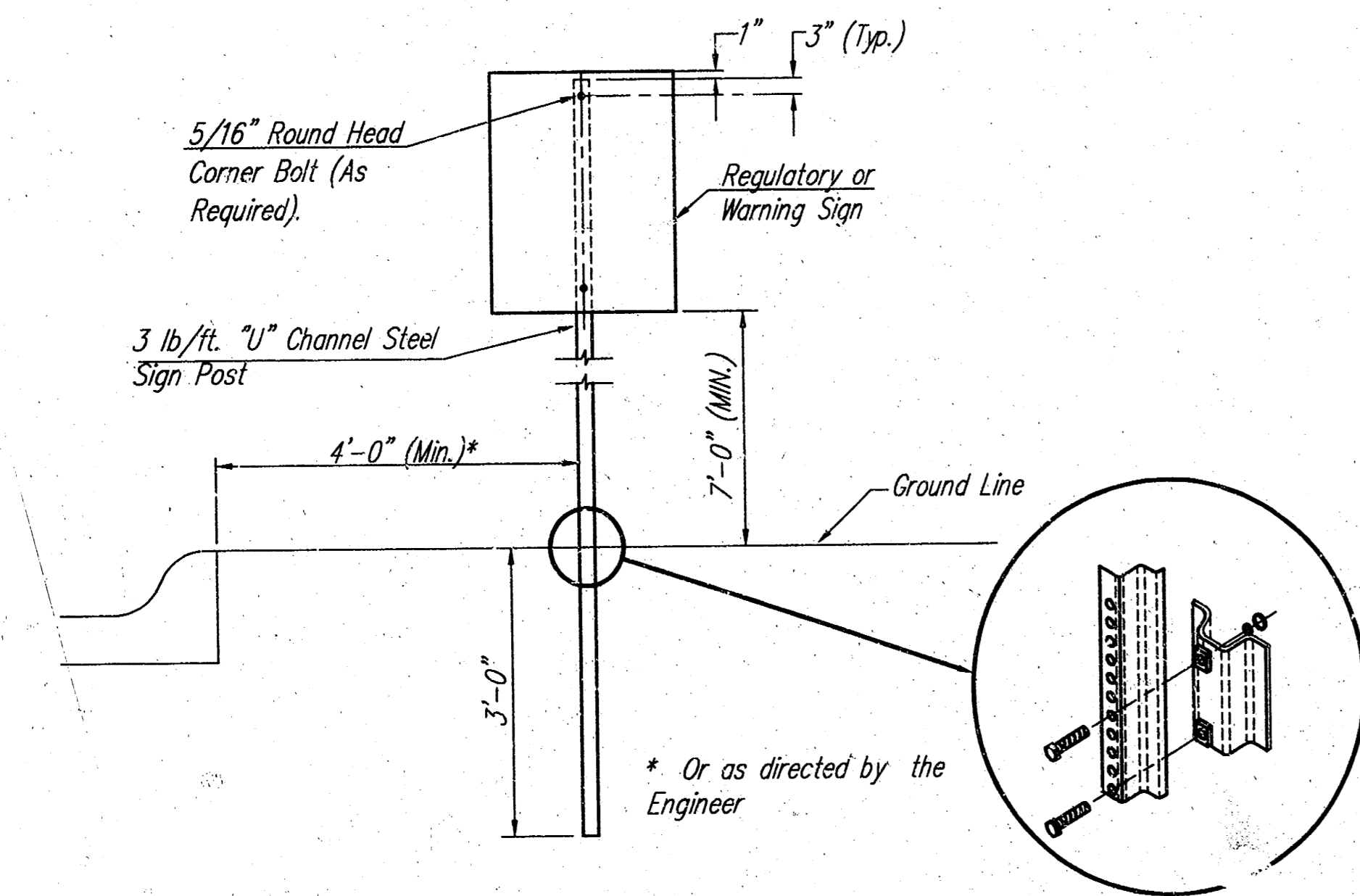
LONGITUDINAL JOINT DETAIL (L.J.)



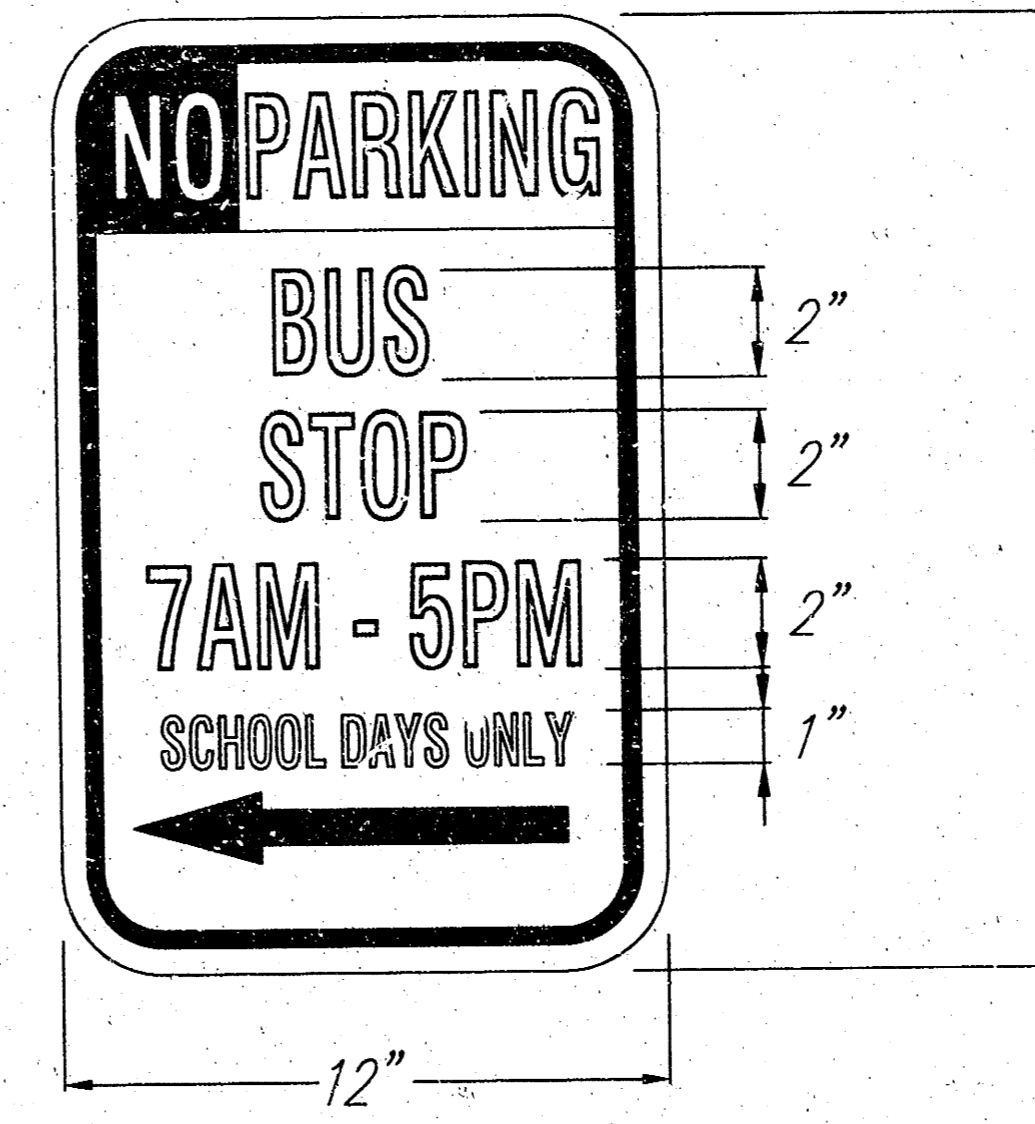
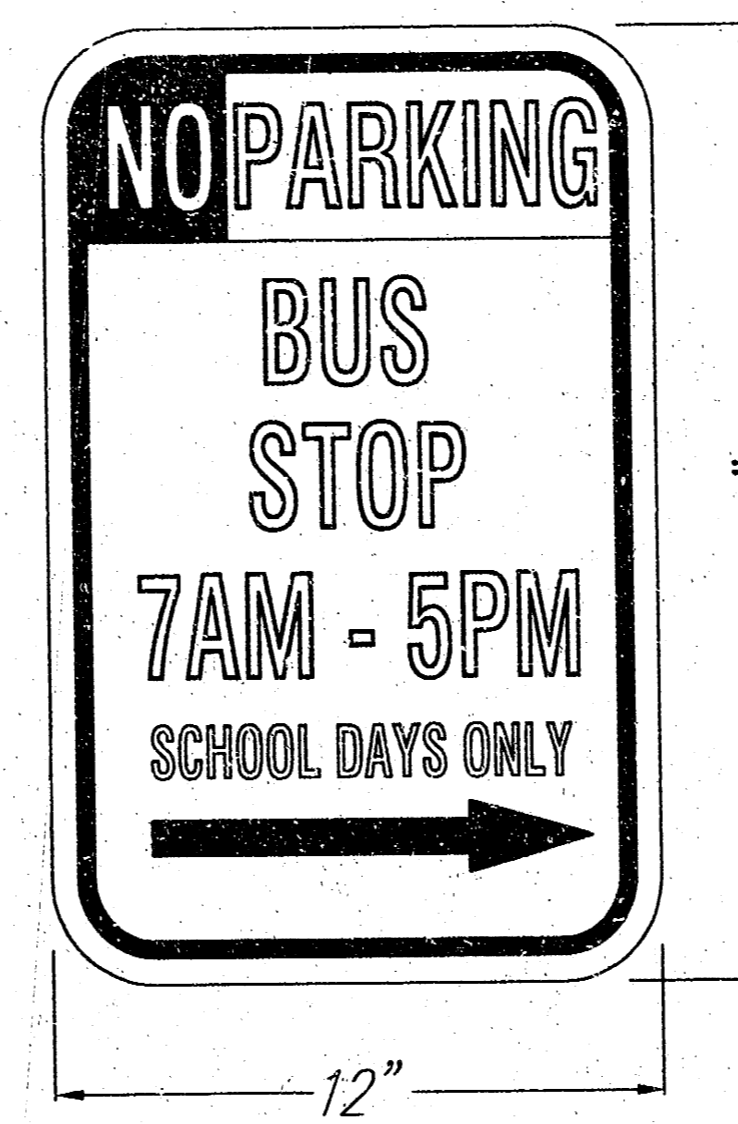
CONTRACTION JOINT DETAIL (C.J.)

NOTES:

1. POST ANCHORS: POSTS SHALL BE ANCHORED WITH A YIELDING BASE POST SUPPORT AS DETAILED.
2. POSTS FOR TRAFFIC CONTROL SIGNS: POSTS SHALL CONFORM TO THE REQUIREMENTS OF SUBSECTION 1620 OF THE STANDARD SPECIFICATIONS EXCEPT THAT ALL POSTS SHALL WEIGH 3 LB./FOOT MINIMUM.
3. MOUNTING BRACKETS FOR SIGNS: DIE-CAST ALUMINUM BRACKETS SHALL BE ALUMINUM ALLOY 360 HAVING A TENSILE STRENGTH OF 44,000 PSI. THE BRACKETS SHALL BE SMOOTHLY FINISHED FREE OF PITS, BURRS, AND FLAWS. EACH BRACKET SHALL BE TAPPED AND DRILLED FOR 5/16" ZINC-PLATED ALLEN-TYPE SET SCREWS HAVING SELF-LOCKING SAW-TOOTH ENDS.
4. FASTENERS: ALL STEEL FASTENERS FOR TRAFFIC CONTROL SIGNS SHALL BE GALVANIZED AND SHALL CONFORM TO THE REQUIREMENTS OF SUBSECTION 1614 OF THE STANDARD SPECIFICATIONS.
5. REFLECTIVE SHEETING: REFLECTIVE SHEETING SHALL BE TYPE II - HIGH PERFORMANCE CLASS HA IN ACCORDANCE WITH SUBSECTION 2201 OF THE STANDARD SPECIFICATIONS.
6. PROCESS INK: ALL PROCESS INK SHALL CONFORM TO THE REQUIREMENTS OF SUBSECTION 2202 OF THE STANDARD SPECIFICATIONS.
7. DETAILS: REGULATORY AND WARNING SIGNS SHALL CONFORM TO THE DETAILS IN "STANDARD HIGHWAY SIGNS", FHWA, 1979.

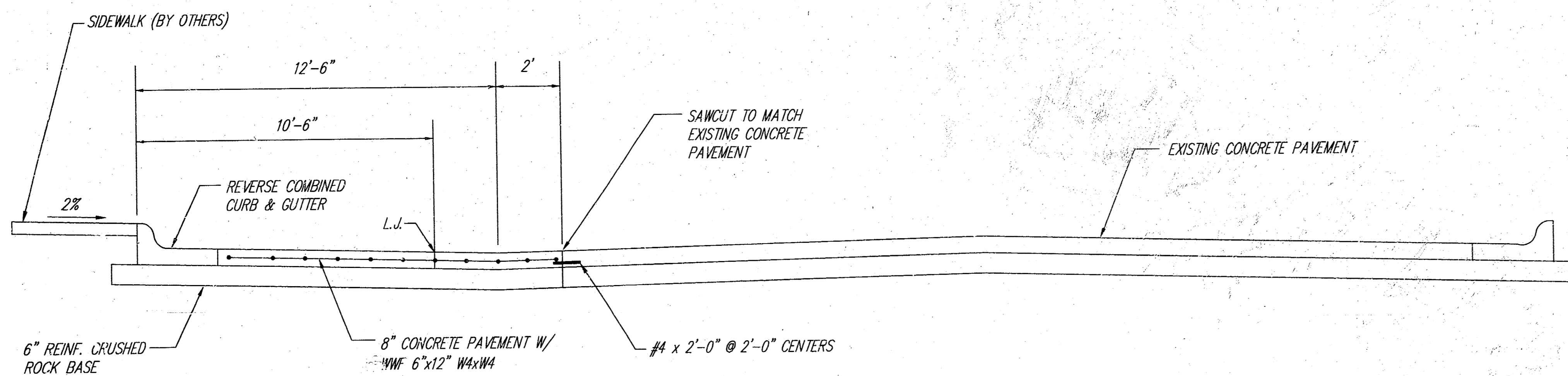


TYPICAL TRAFFIC CONTROL SIGN MOUNTING INSTALLATION



NO PARKING SIGNS

SCALE: NONE



CURB & GUTTER SECTION

<p>MKEC ENGINEERING CONSULTANTS 411 N. WEBB ROAD WICHITA, KS. 67206 316 - 684 - 9600</p>	ALLEN ELEMENTARY SCHOOL		
	PROJECT NAME		
	DETAILS		
	SHEET TITLE		
DK DESIGN BY:	NRP DRAWN BY:	DK CHECKED BY:	
JUNE 2002 DATE	01210 JOB NO.	3 / 3 SHEET/OF	

10 50 40 01