

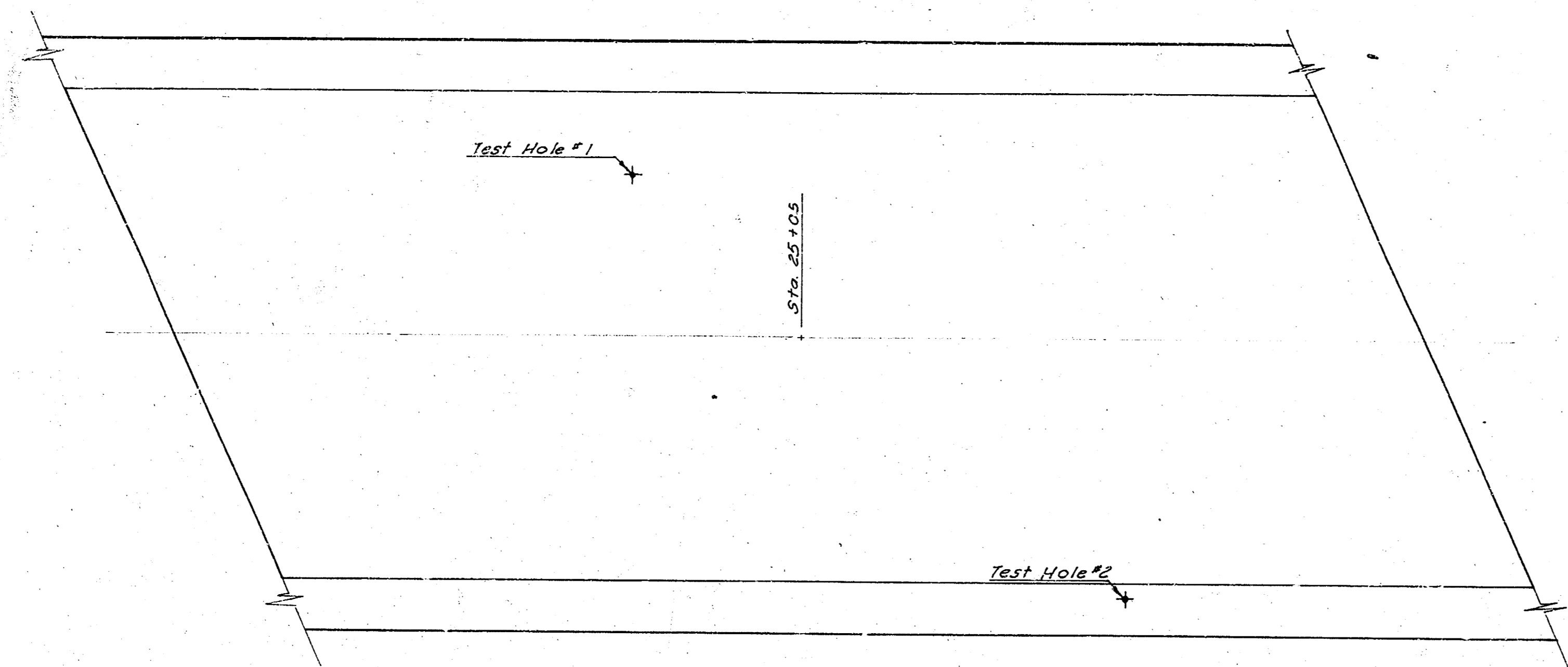
GENERAL NOTES:

- Excavation and embankment shall be completed in the vicinity of the bridge prior to construction of piers and abutments.
- Design loading: W20-516-44 AASHTO Specifications.
- Unit Stresses: C-3000 psi; S-12000 psi; E-20000 psi.
- Piles shall be driven to a minimum computed bearing value as follows:
 - Abut #1 & #2 - 31 Tons per pile.
 - Pier #1 & #2 - 33 Tons per pile.
- All piles shall be driven onto rock or penetration into shale unless in the opinion of the Engineer such penetration can not be obtained without injury to the pile.
- Backfill compaction shall be required of all piles.
- Clearing of Right of Way shall include removal of all trees, stumps, logs, fences, foundations, slabs, asphalt mat, rock, etc., as required (See Sheet 10).
- A test pile shall be driven at the location shown or as directed by the Engineer. Test pile shall remain in place as a permanent pile.
- Excavated dirt is to be used to fill exist. channel as indicated.

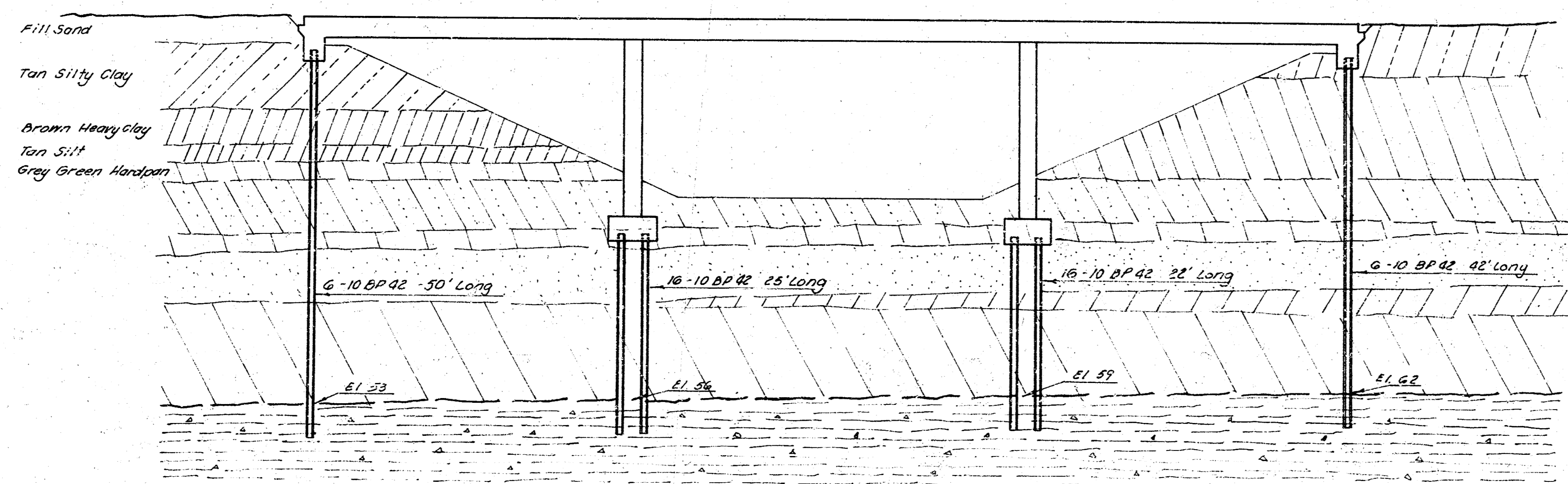
SUMMARY OF BRIDGE QUANTITIES						
Class III Excavation C.Y.	Concrete Class A C.Y.	Reinforcing Steel Lbs.	Bearing Piles Lin. Ft.	Metal Handrail Lin. Ft.	Steel Test Pile Lin. Ft.	
Abut #1	42.0	35.5	3,462	250'		30'
Pier #1	32.0	30.2	9,973	400'		
Pier #2	32.0	30.2	9,973	352'		
Abut #2	42.0	35.5	3,462	252'		
Superstr.		450.4	126,164		260'	
Total	268.0	602.4	521,4	1,254	260'	30'

SUMMARY OF CHANNEL-CHANGE QUANTITIES		
Total Dist. (Feet)	Units	Item
46,700	C.Y.	Common Excavation (42:1 to 1:1)
9,700	C.Y.	Compacted Fill (BMC+10%)
See Sheet 1		Removal of Existing Structures
See Note 6		Removal Clearing of Right of Way

GYPSUM CREEK
CONSTRUCTION LAYOUT
 HILLSIDE AVE.
 CITY OF WICHITA, KANSAS
 B. E. SMITH CITY ENGINEER
 DATE: PROJECT NO. C19-8
 DRAWN BY: CHECKED BY: FIELD BOOK: SHEET: 2 of 18



Scale: 1"=10'-0"



- Brown Silty Clay 100
- Grey Green Heavy Clay 90
- Grey Green Clay w/ Sandstone 80
- Blue Shaly Clay
- Fine Sand
- Green Hardpan 70
- Blue Shaly clay 60
- Whittington Shale Gypsum 50
- 40

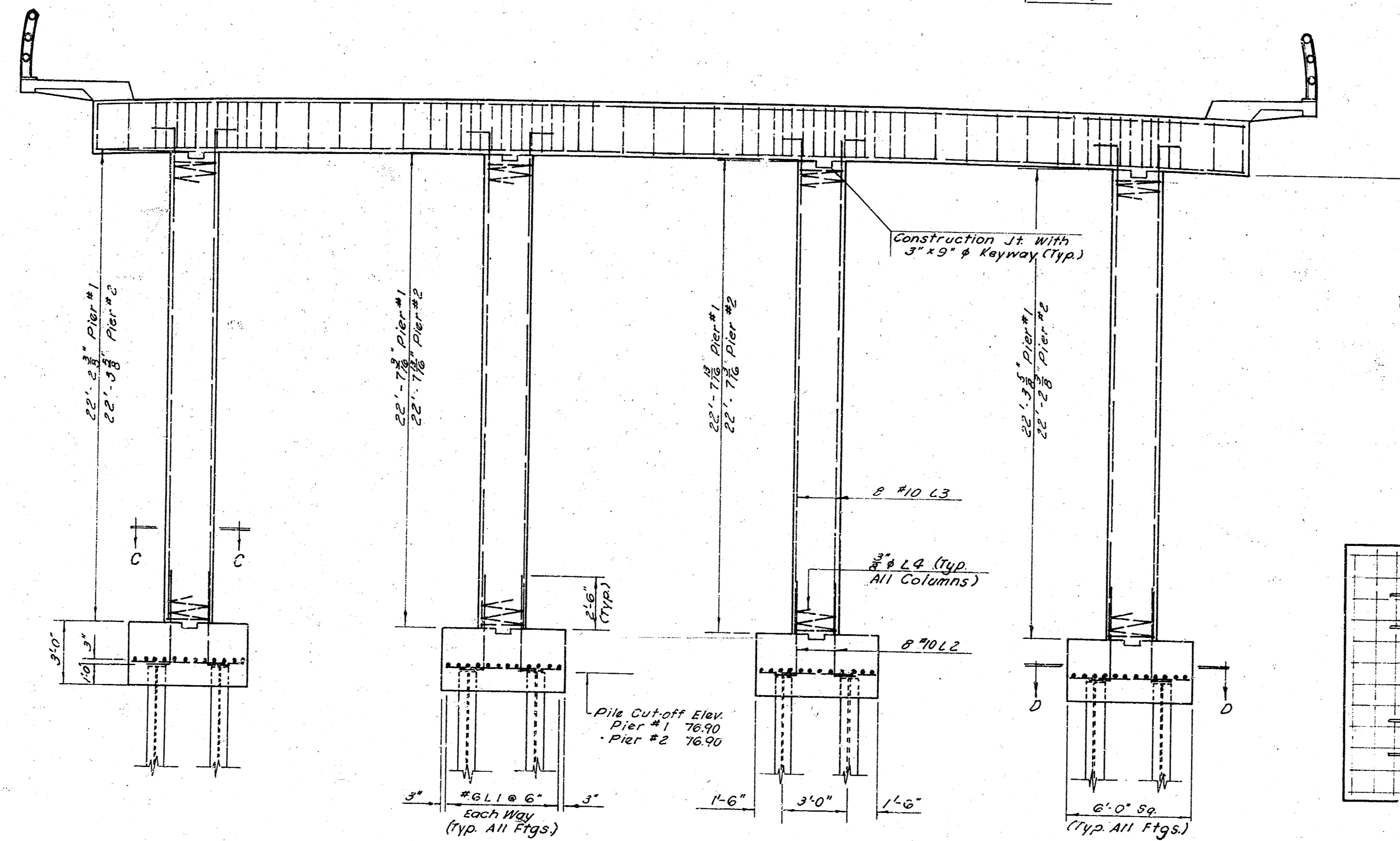
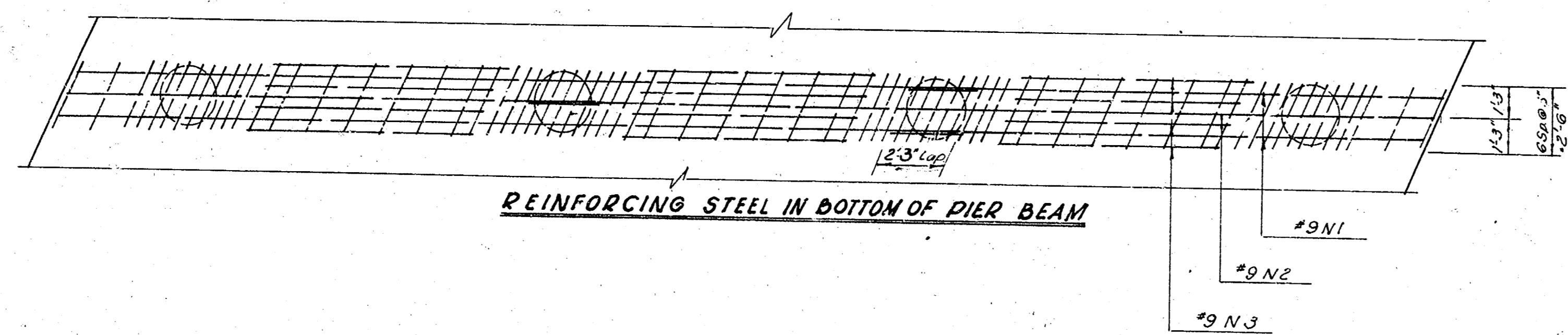
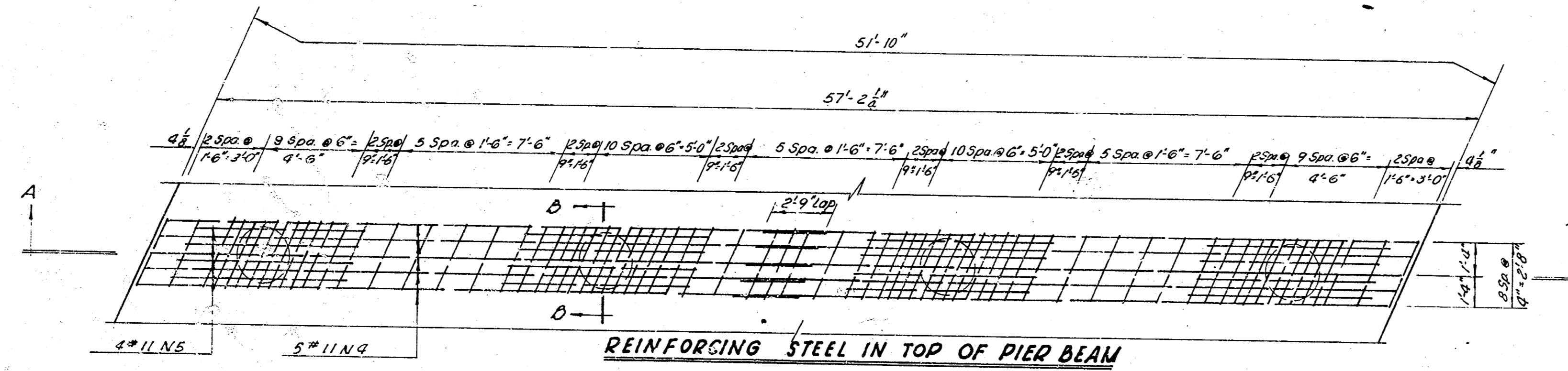
Note: The sounding shown on these plans are taken from notes obtained in the field by the Wichita Chemical and Testing Laboratories and represent the best information available to the City of Wichita. The logs of these soundings are on file at the City Engineer's Office and are available for inspection by interested and qualified parties.

**GYPSUM CREEK
ENGINEERING GEOLOGY**

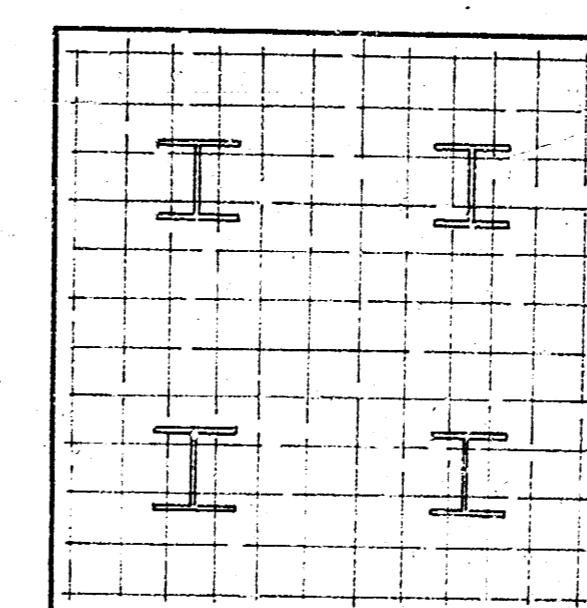
HILLSIDE AVE.
CITY OF WICHITA, KANSAS
B. E. SMITH CITY ENGINEER

DATE: PROJECT NO. G19-B

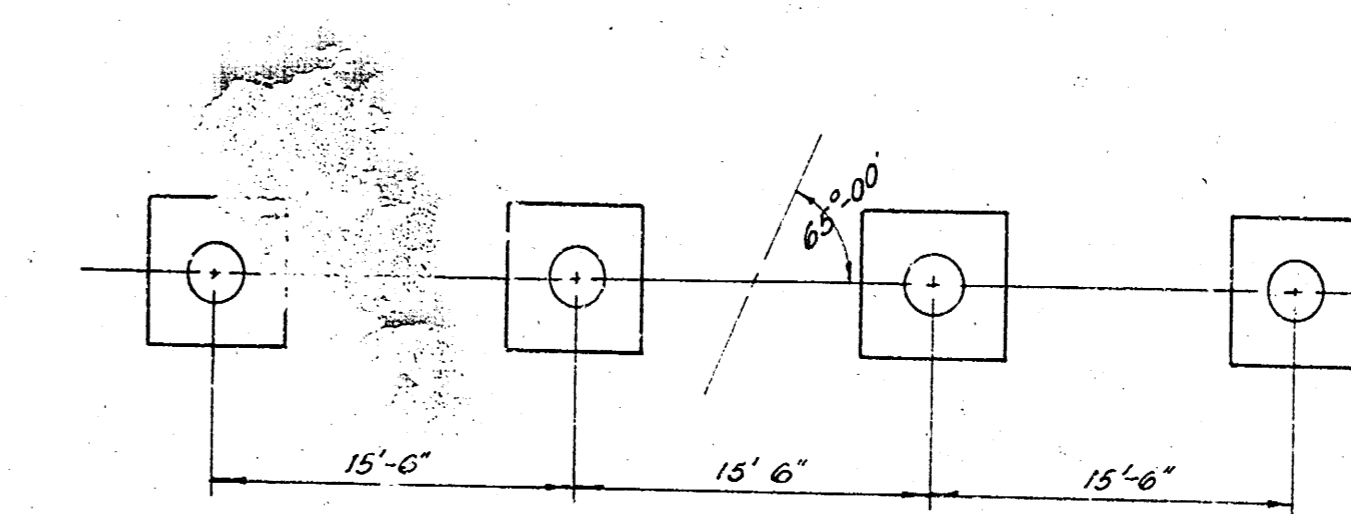
DRAWN BY: Fago	CHECKED BY:	FIELD BOOK:	SHEET: 3 of 15
-------------------	-------------	-------------	-------------------



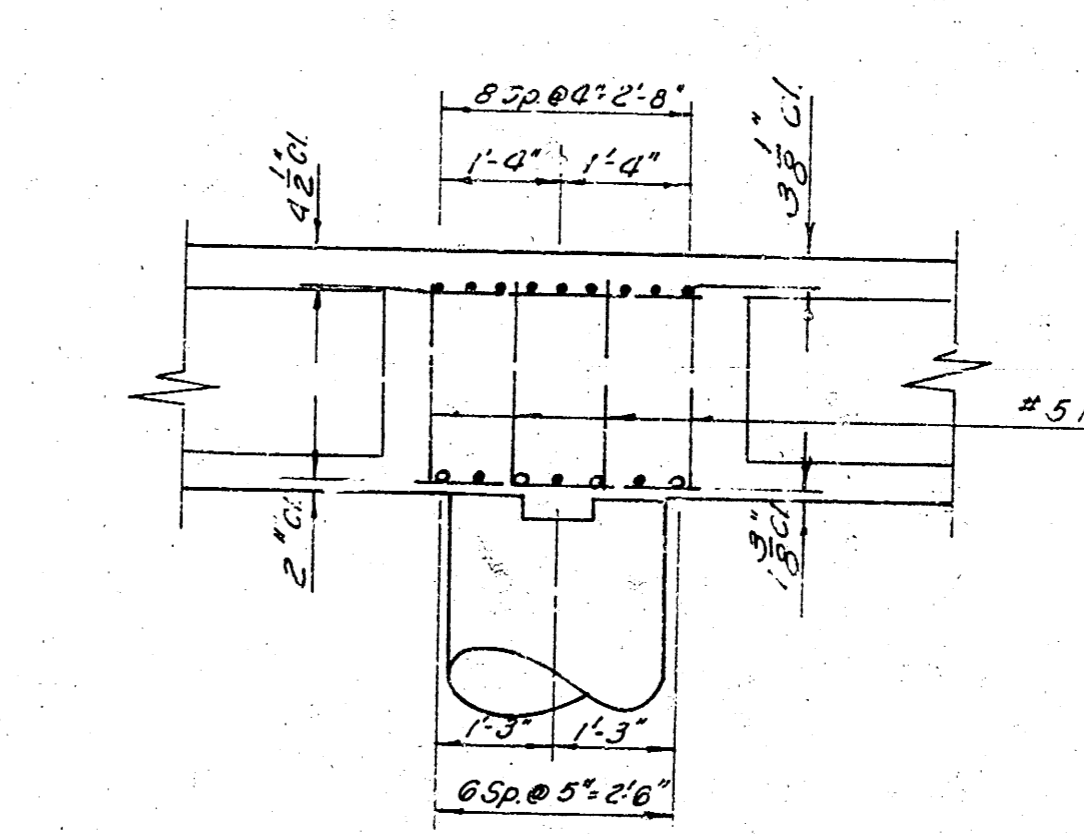
**SECTION A-A
PIER ELEVATION**



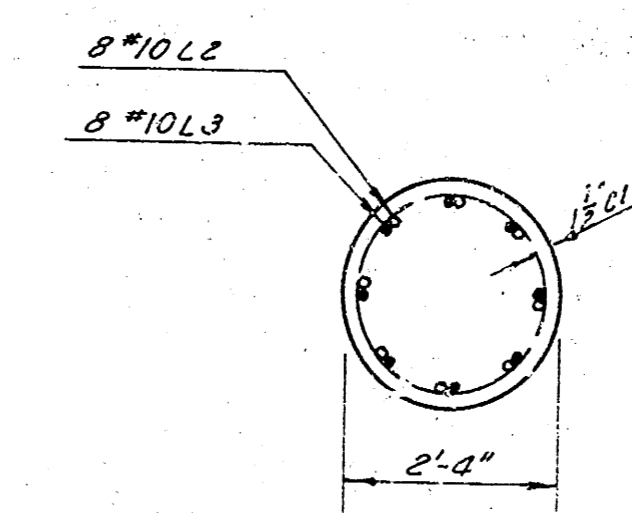
SECTION D-D



PIER FOOTING LOCATION

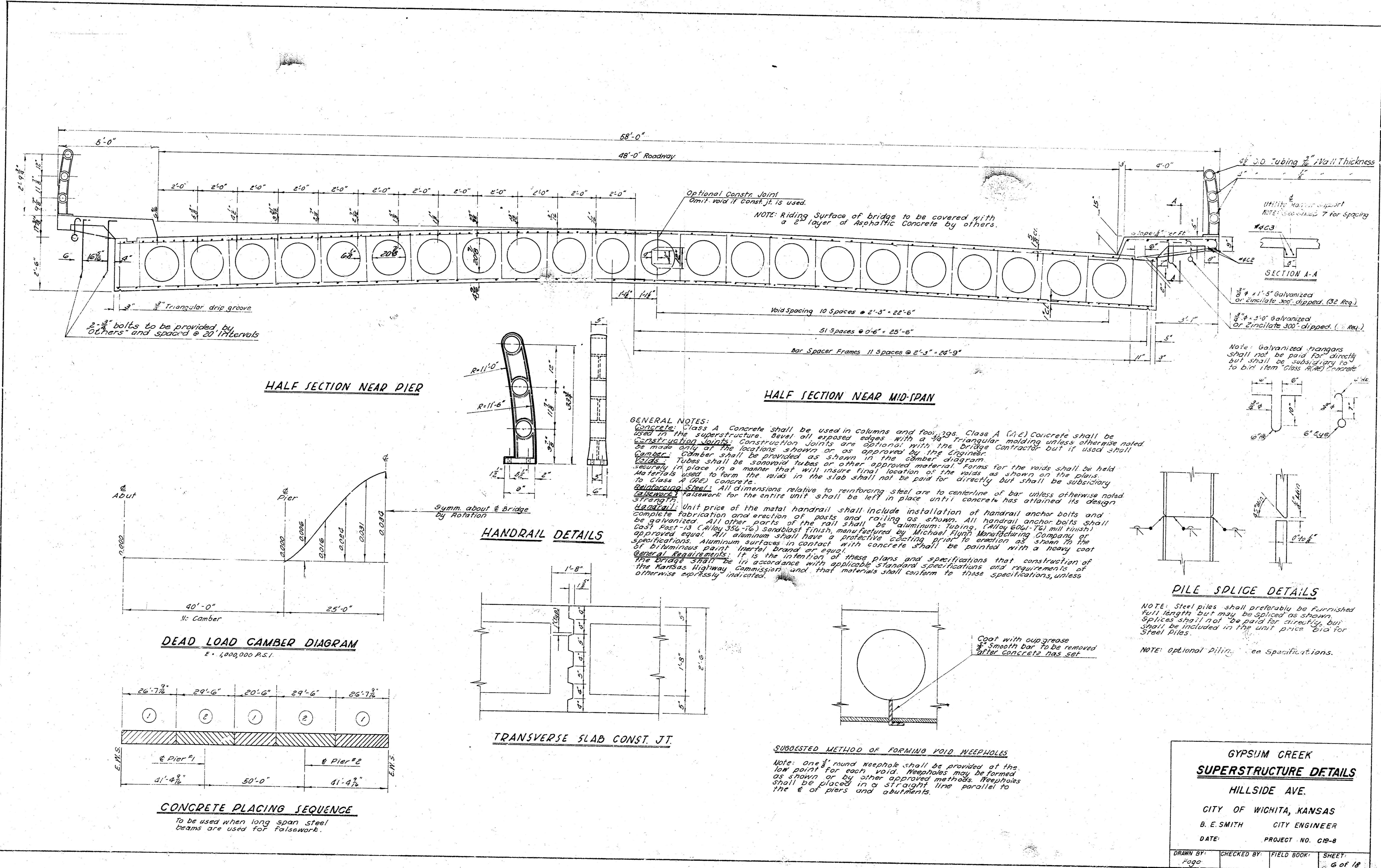


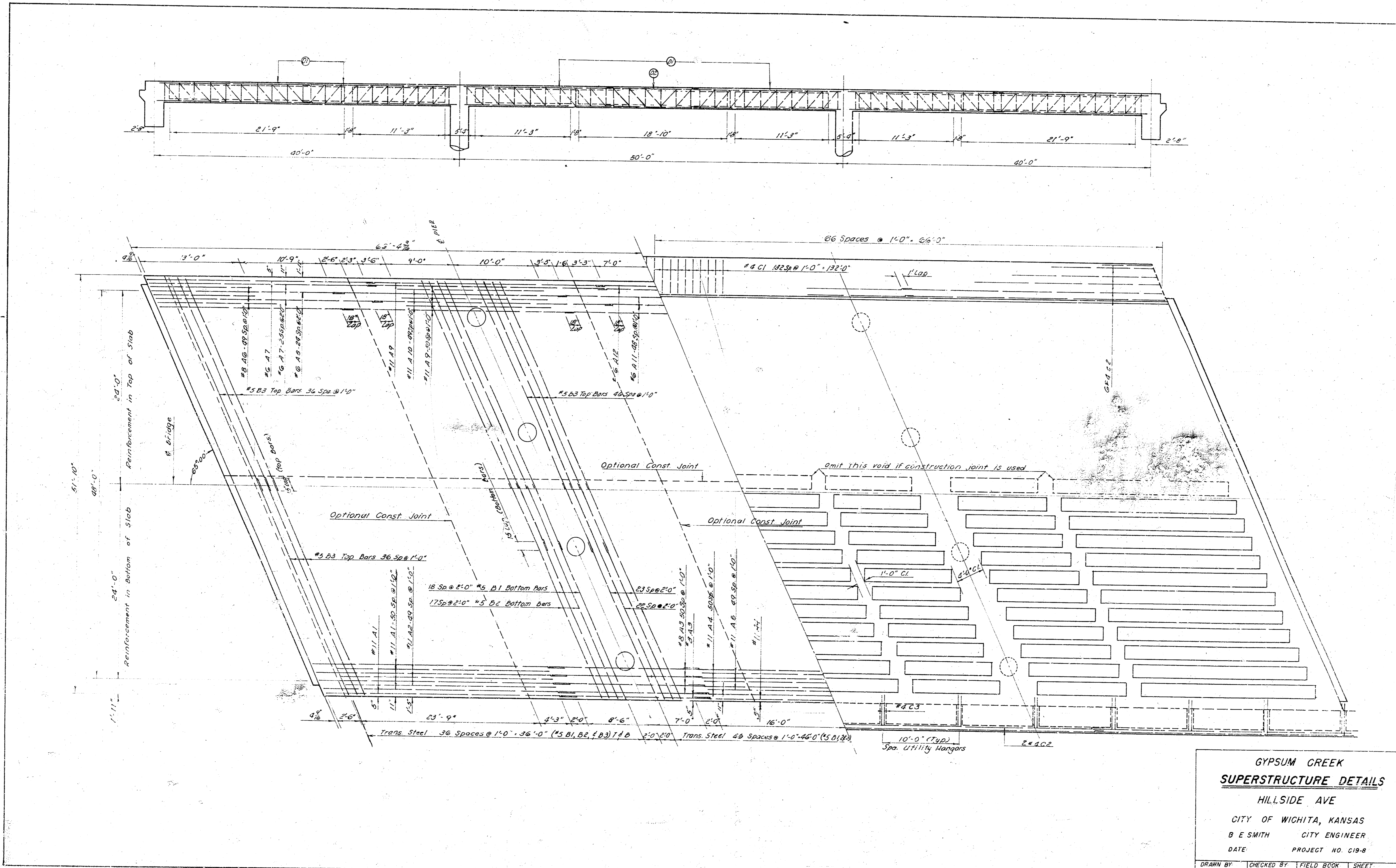
SECTION B-B



SECTION C-C

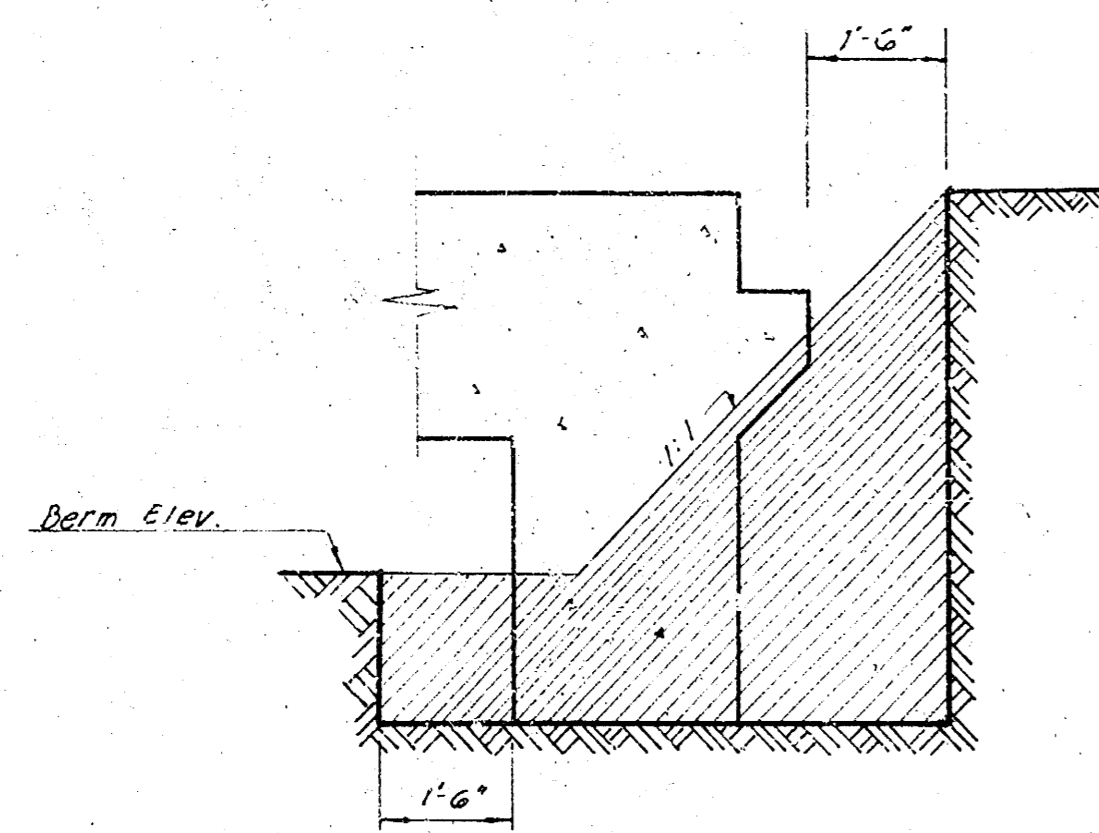
**GYPSUM CREEK
PIER DETAILS
HILLSIDE AVE.**
CITY OF WICHITA, KANSAS
B. E. SMITH CITY ENGINEER
DATE: PROJECT NO. DIS-8
DRAWN BY: Fogo CHECKED BY: FIELD BOOK: SHEET: 5 of 18



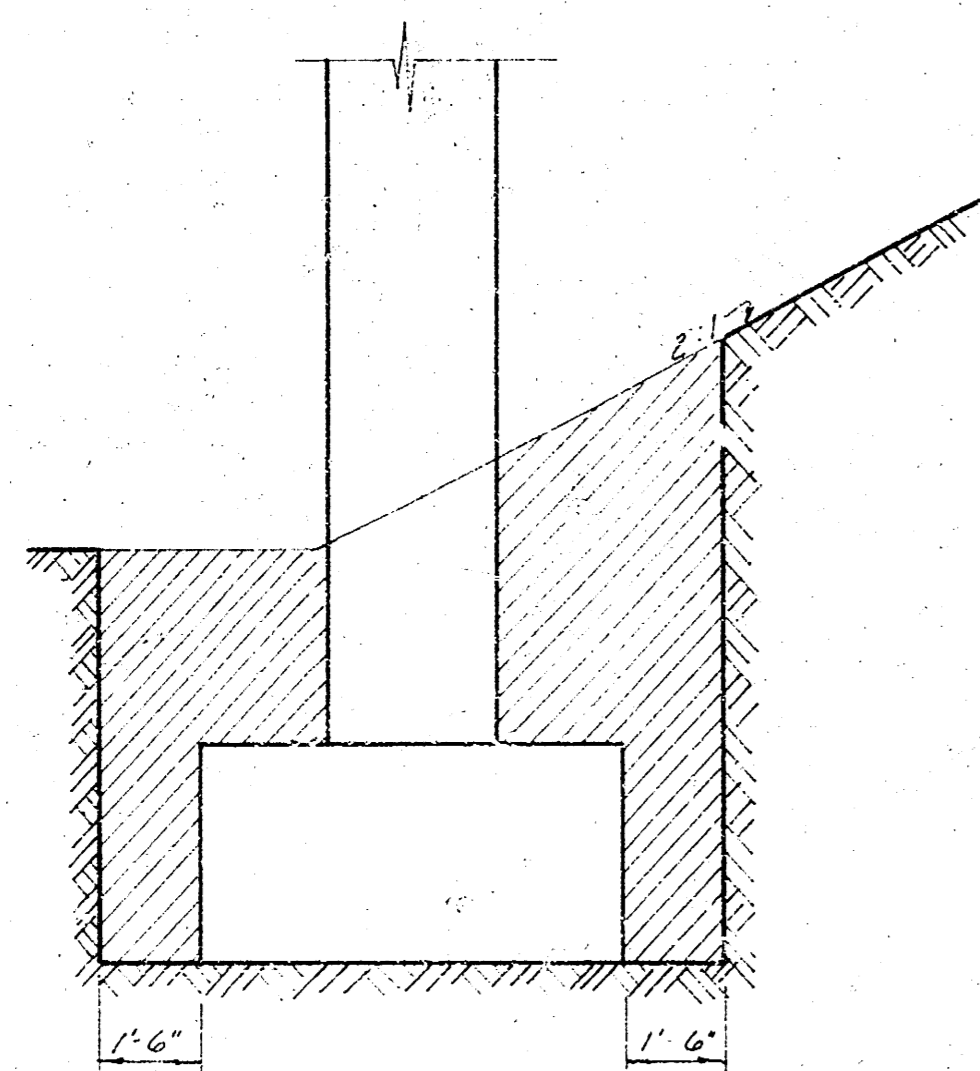


GYPSUM CREEK
SUPERSTRUCTURE DETAILS
 HILLSIDE AVE
 CITY OF WICHITA, KANSAS
 B E SMITH CITY ENGINEER
 DATE PROJECT NO. C19-8

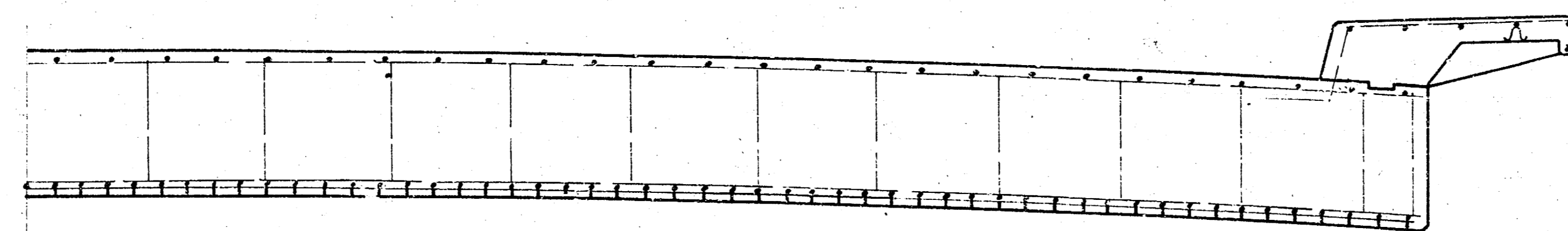
DRAWN BY Page	CHECKED BY	FIELD BOOK	SHEET 7 of 18
------------------	------------	------------	------------------



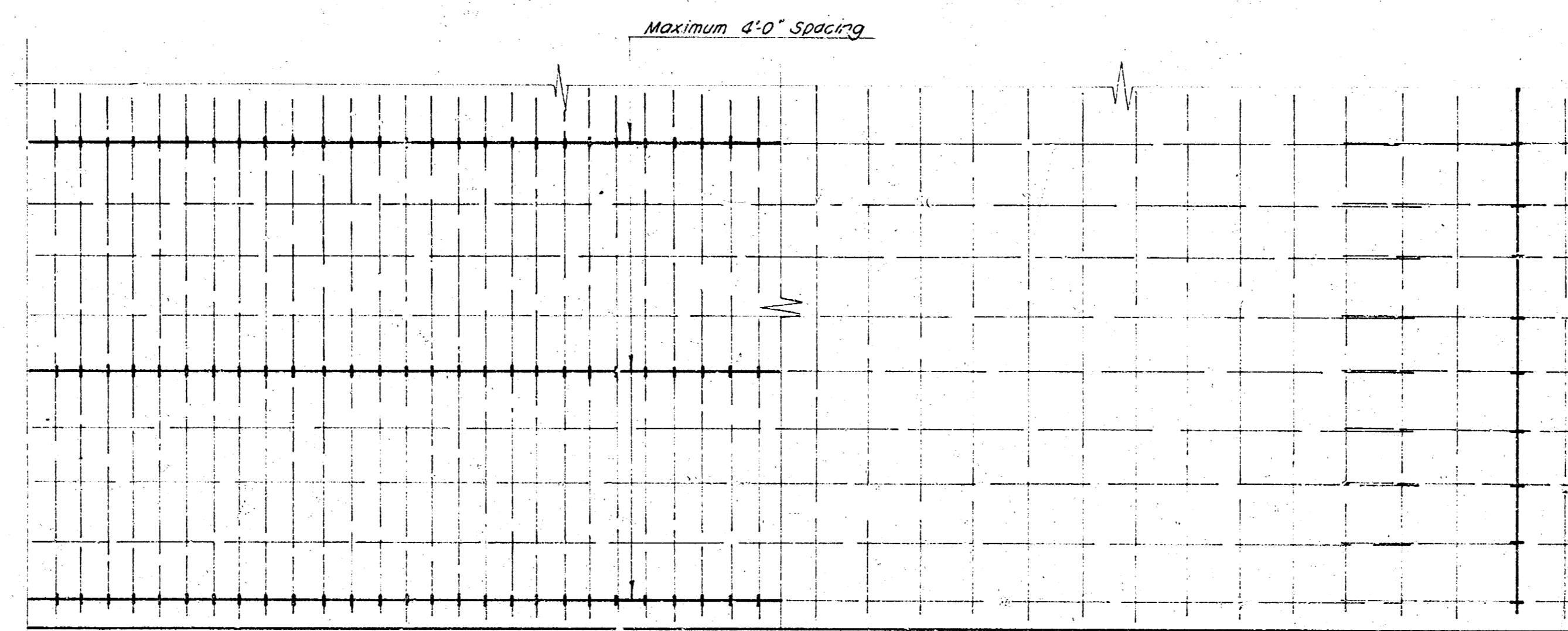
SECTION A-A



SIDE VIEW - PIER EXCAVATION

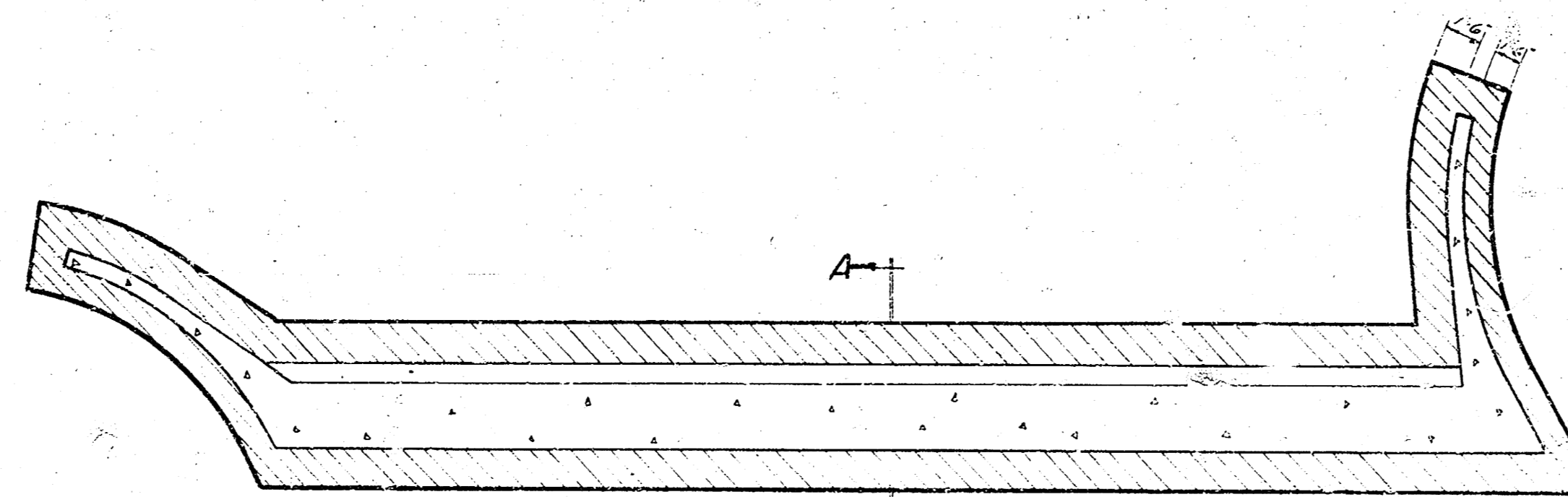


LOWER STEEL SUPPORT

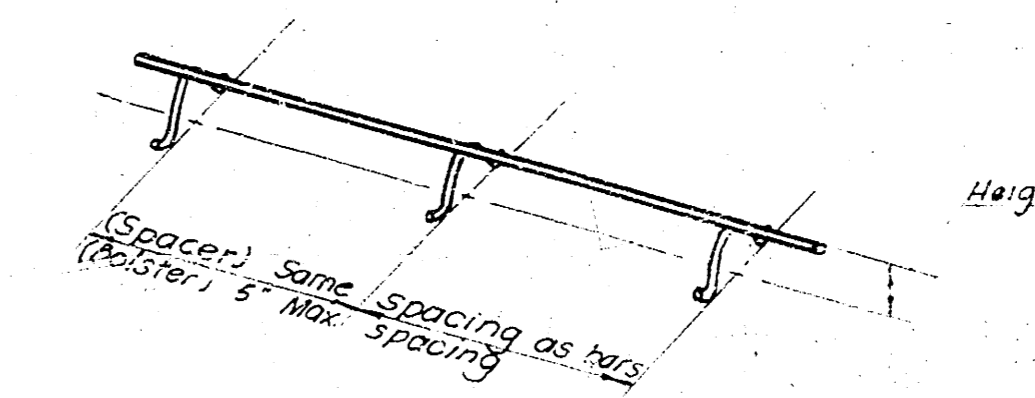


UPPER STEEL SUPPORT-HUBGUARD

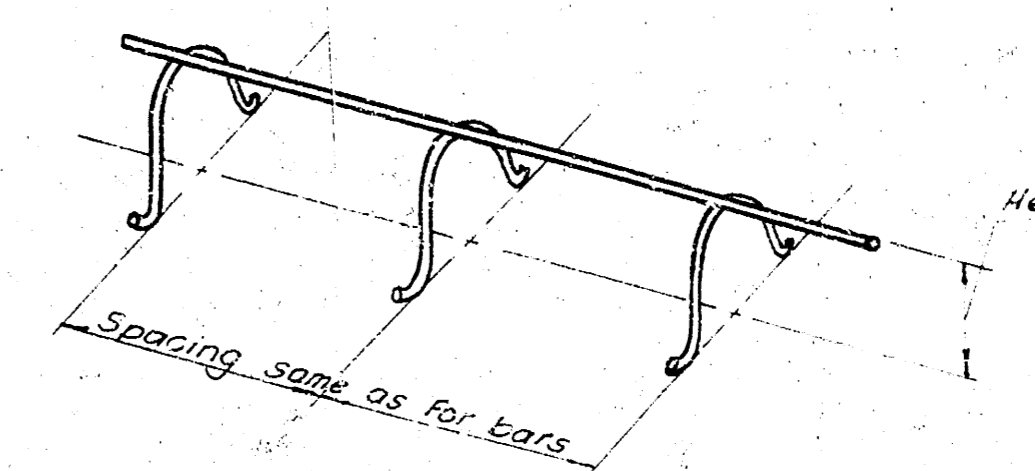
TYPICAL SUPERSTRUCTURE DETAILS



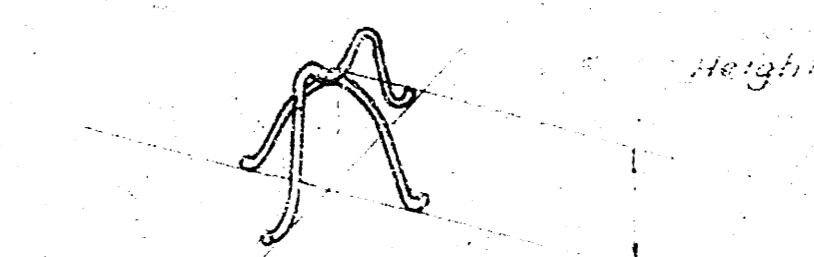
PLAN - ABUTMENT EXCAVATION



LOW SLAB BAR BOLSTER

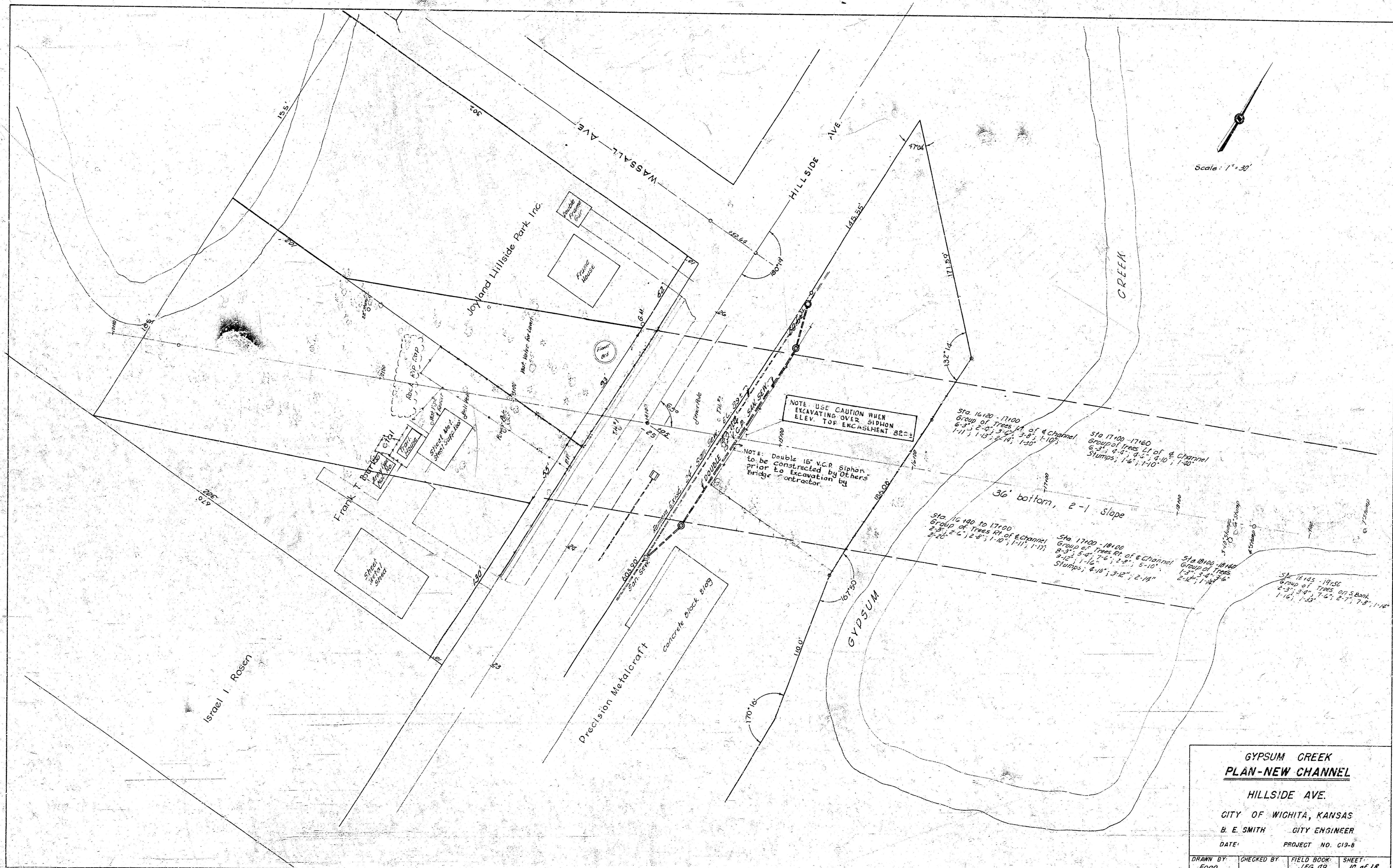


CONTINUOUS HIGH CHAIR



INDIVIDUAL HIGH CHAIR

GYPSUM CREEK			
BAR SUPPORTS & BRIDGE EXCAV.			
HILLSIDE AVE.			
CITY OF WICHITA, KANSAS			
B. E. SMITH CITY ENGINEER			
DATE:	PROJECT NO. C19-8		
DRAWN BY: Fgoc	CHECKED BY:	FIELD BOOK:	SHEET: 2 of 18



**GYP SUM CREEK
PLAN-NEW CHANNEL**
HILLSIDE AVE.
CITY OF WICHITA, KANSAS
B. E. SMITH CITY ENGINEER
DATE: PROJECT NO. C13-8

DRAWN BY Egyp	CHECKED BY JFS	FIELD BOOK 49	SHEET 10 of 18
------------------	-------------------	------------------	-------------------