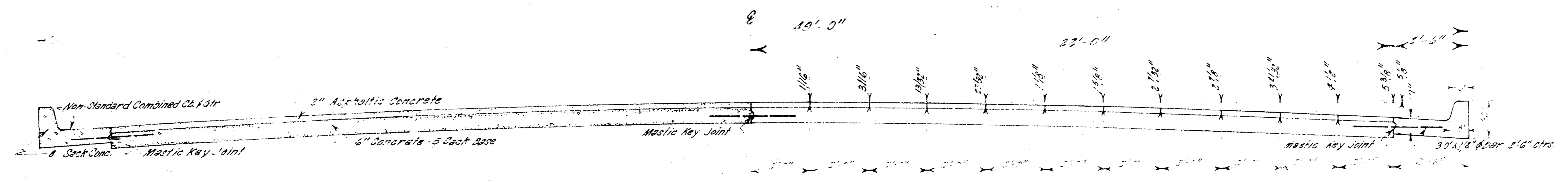
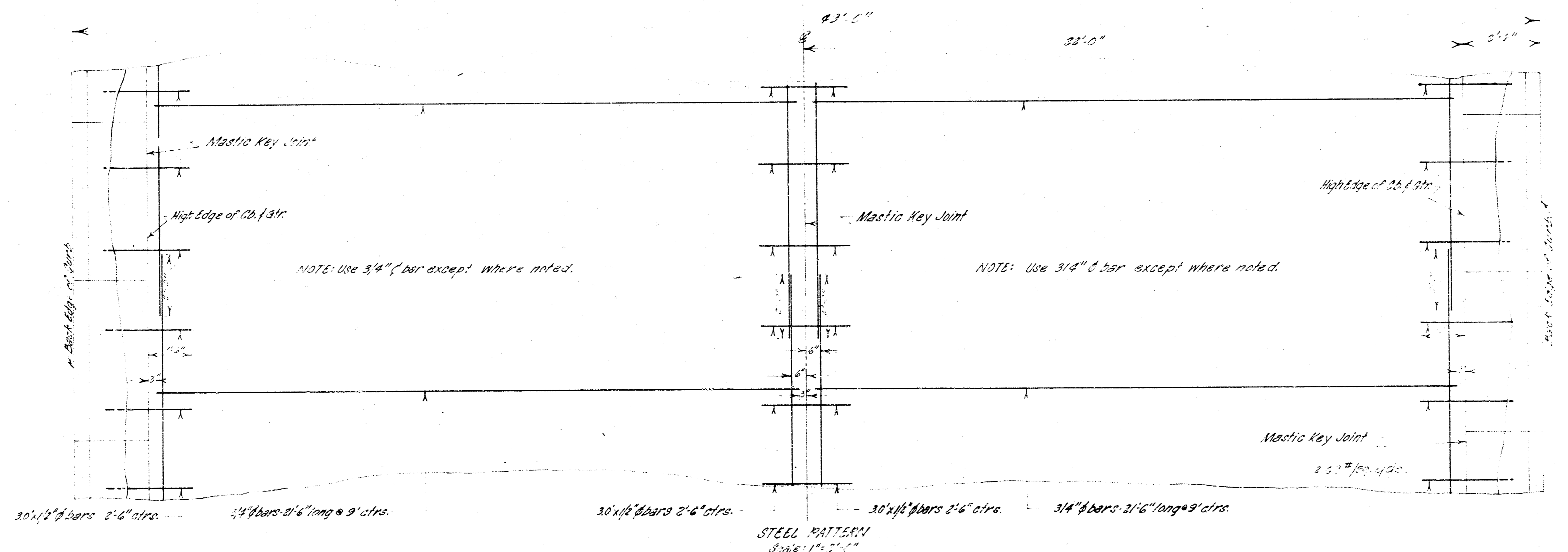


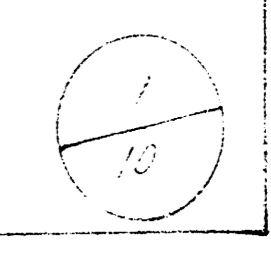
AMIDON AVENUE
 N.L. 25TH STREET TO S.L. 29TH STREET
 PROJ. C13-22



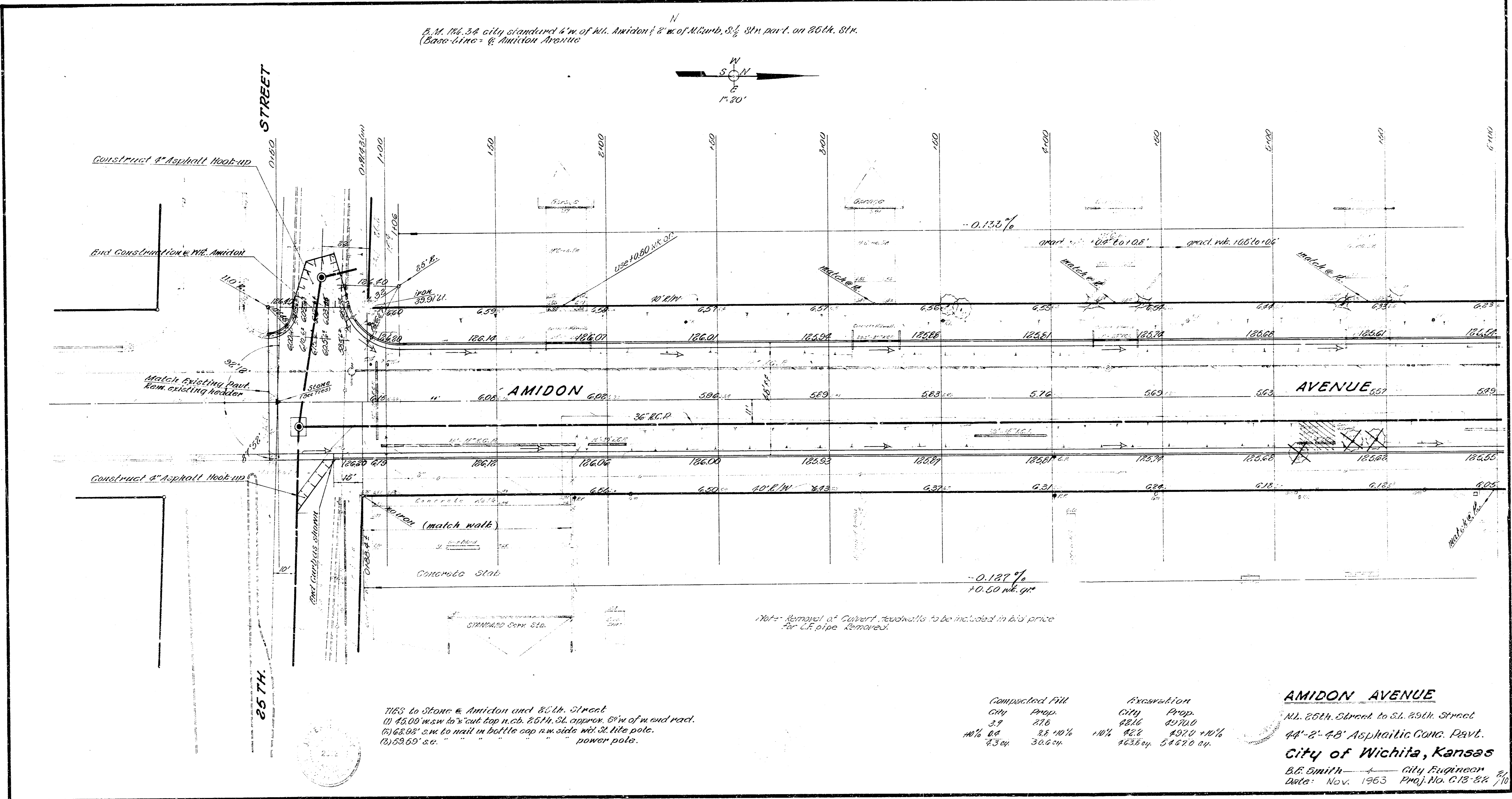
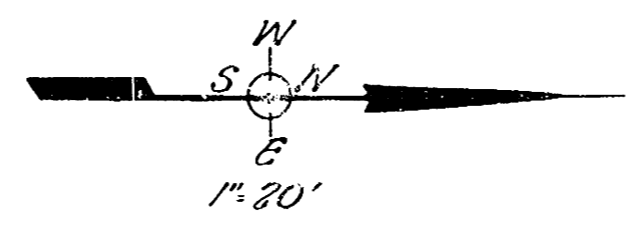
TYPICAL SECTION
 Scale: 1" = 2'-0"



STEEL PATTERN
 Scale: 1" = 2'-0"



3/4" M. 18.34 city standard 4" w. of M. Amidon 2' w. of N. Curb, S 1/2 Stn. part. on 25th St.
 (Base Line = Amidon Avenue)



Construct 4" Asphalt Hook-up

But Construct Hook-up w. Amidon

Match Existing Part from existing header

Construct 4" Asphalt Hook-up

25 TH.

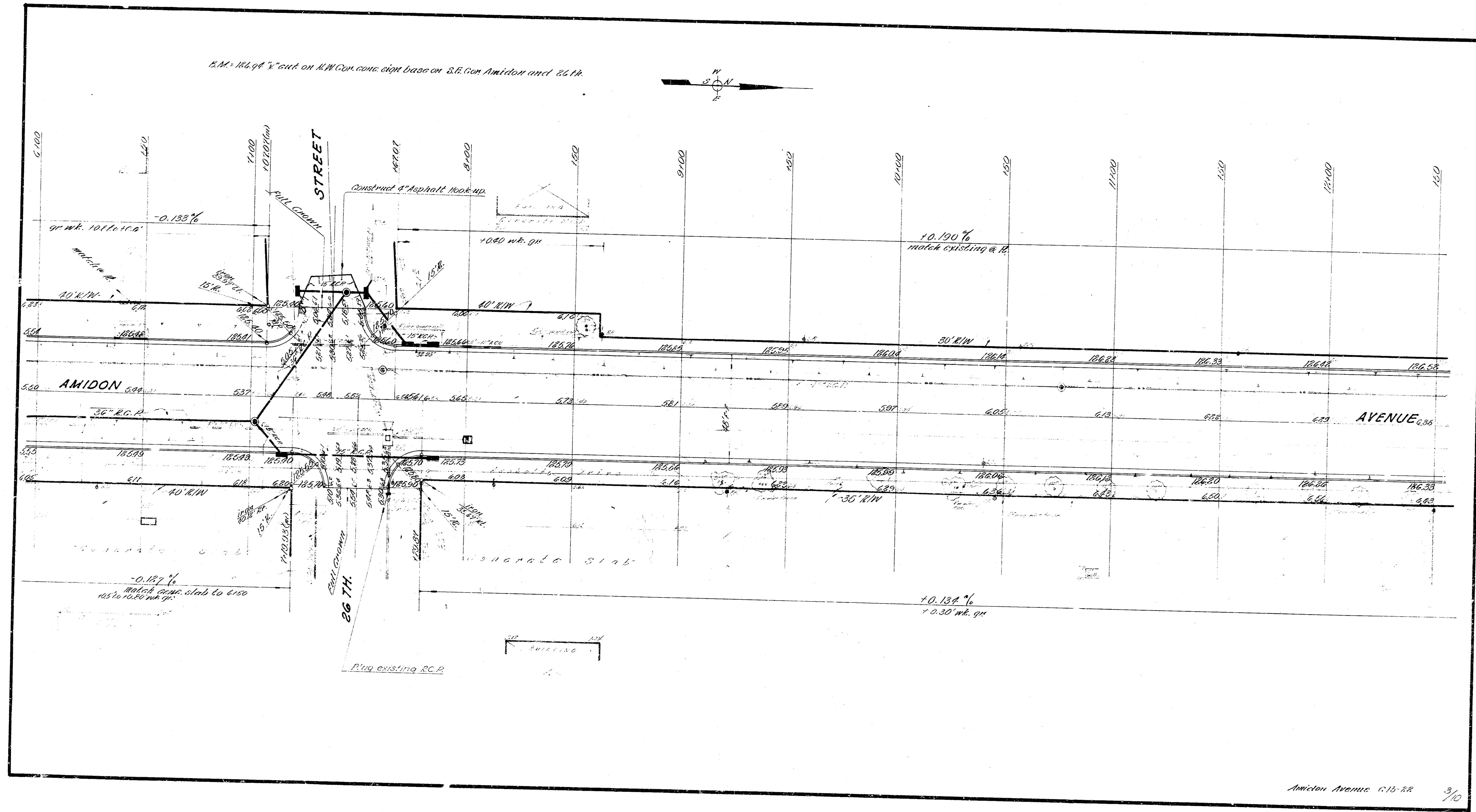
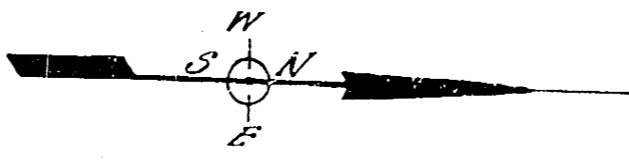
7163 to Stone w. Amidon and 25th Street
 (1) 45.00 msw to 1/2 cut top n. cb. 25th St. approx. 8 1/2' w. of m. end road.
 (2) 63.98' m to rail in bottle cap n. side w. 32' ltr. pole.
 (3) 63.63' ac. power pole.

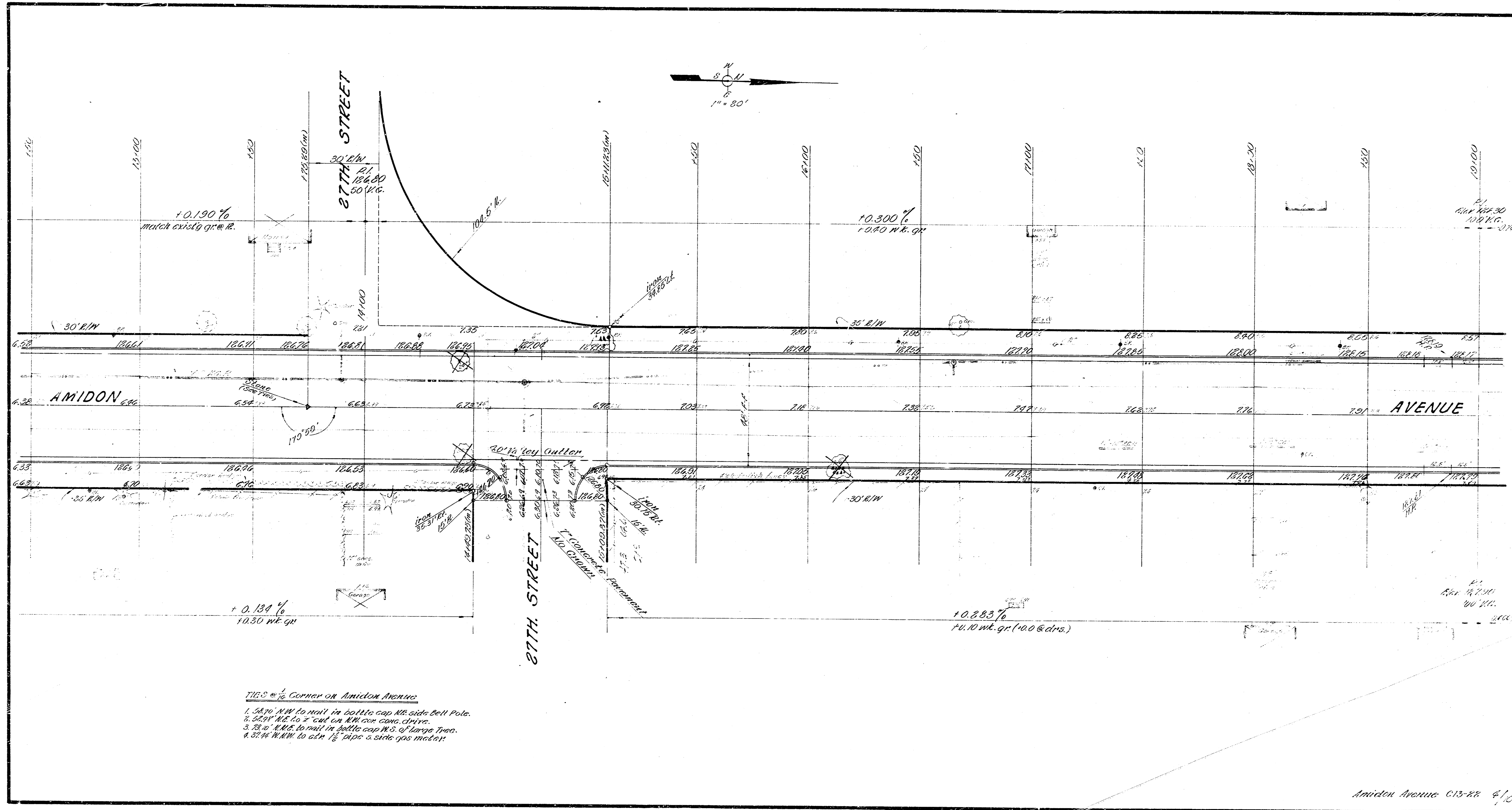
Note: Remove 4" Culvert, 2' x 2' to be included in bid price for C.F. pipe removed.

Compacted Fill		Excavation	
CITY	PROP.	CITY	PROP.
37	276	826	8700
10% 48	38 10%	10%	4970 10%
43 cy	30.6 cy	1636 cy	54470 cy

AMIDON AVENUE
 N. 25th Street to S. 25th Street
 44" - 2' - 48" Asphaltic Conc. Pavt.
 City of Wichita, Kansas
 B.E. Smith City Engineer
 Date: Nov. 1963 Proj. No. C13-84 2/10

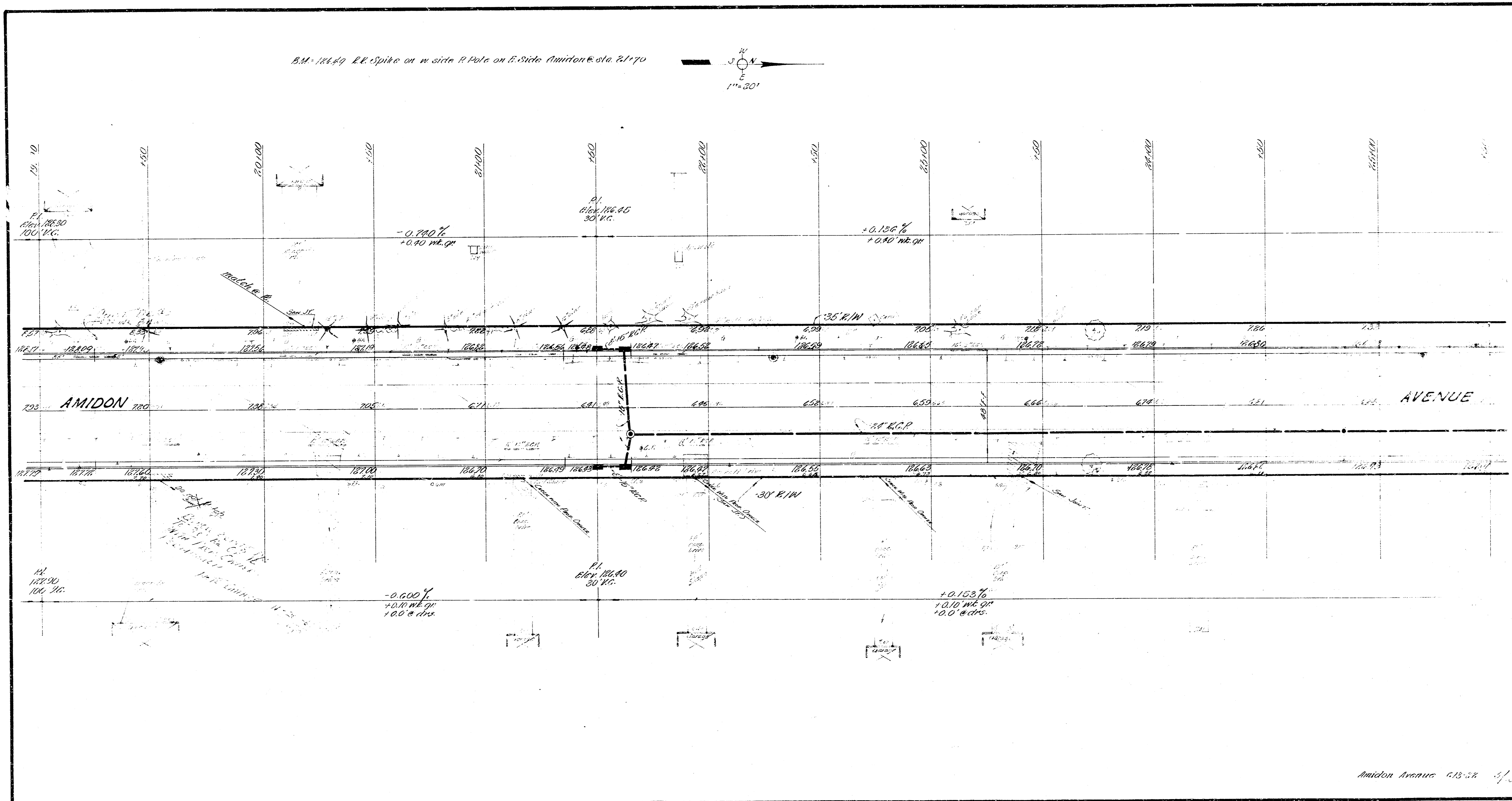
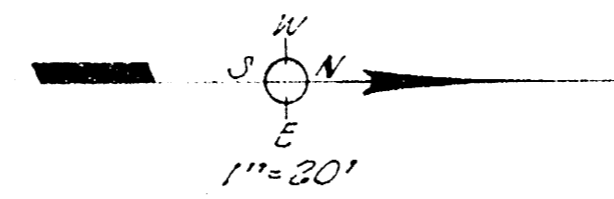
E.M. 106.94 "Cut on R/W Con. conc. sign base on S.E. Con Amidon and 26th.



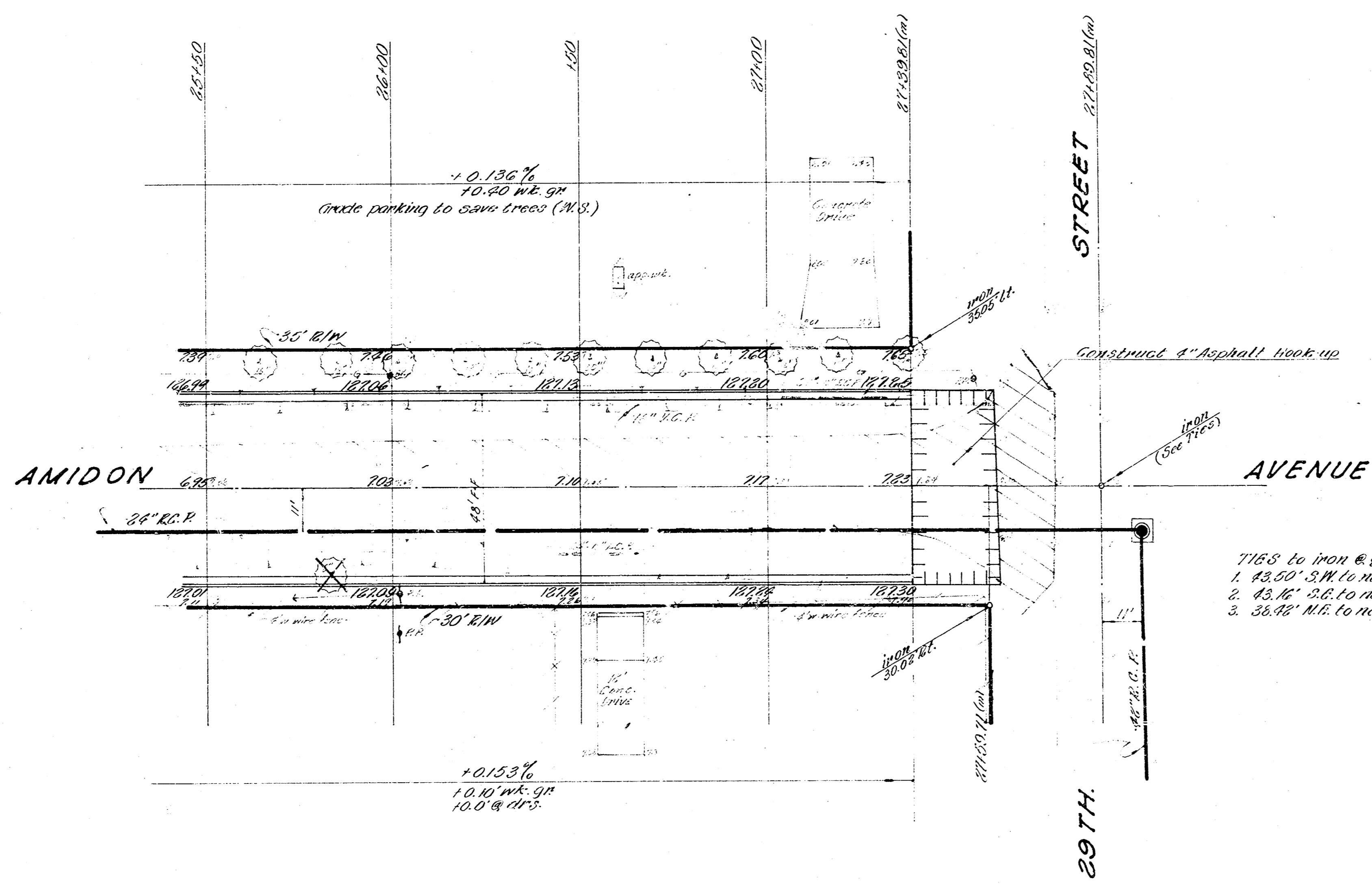
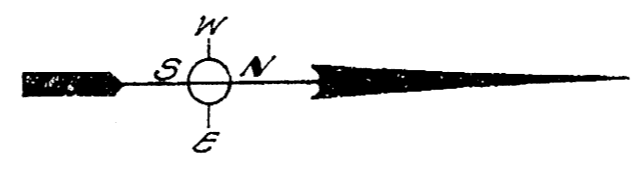


THIS is 1/2 Corner on Amidon Avenue
 1. 5476' NW to nail in bottle cap NE side bell pole.
 2. 5291' NE to 2" cut on NW cor. conc. drive.
 3. 23' W. N.W. to nail in bottle cap W.S. of large tree.
 4. 35' W. N.W. to set 1/2" pipe & steel gas meter.

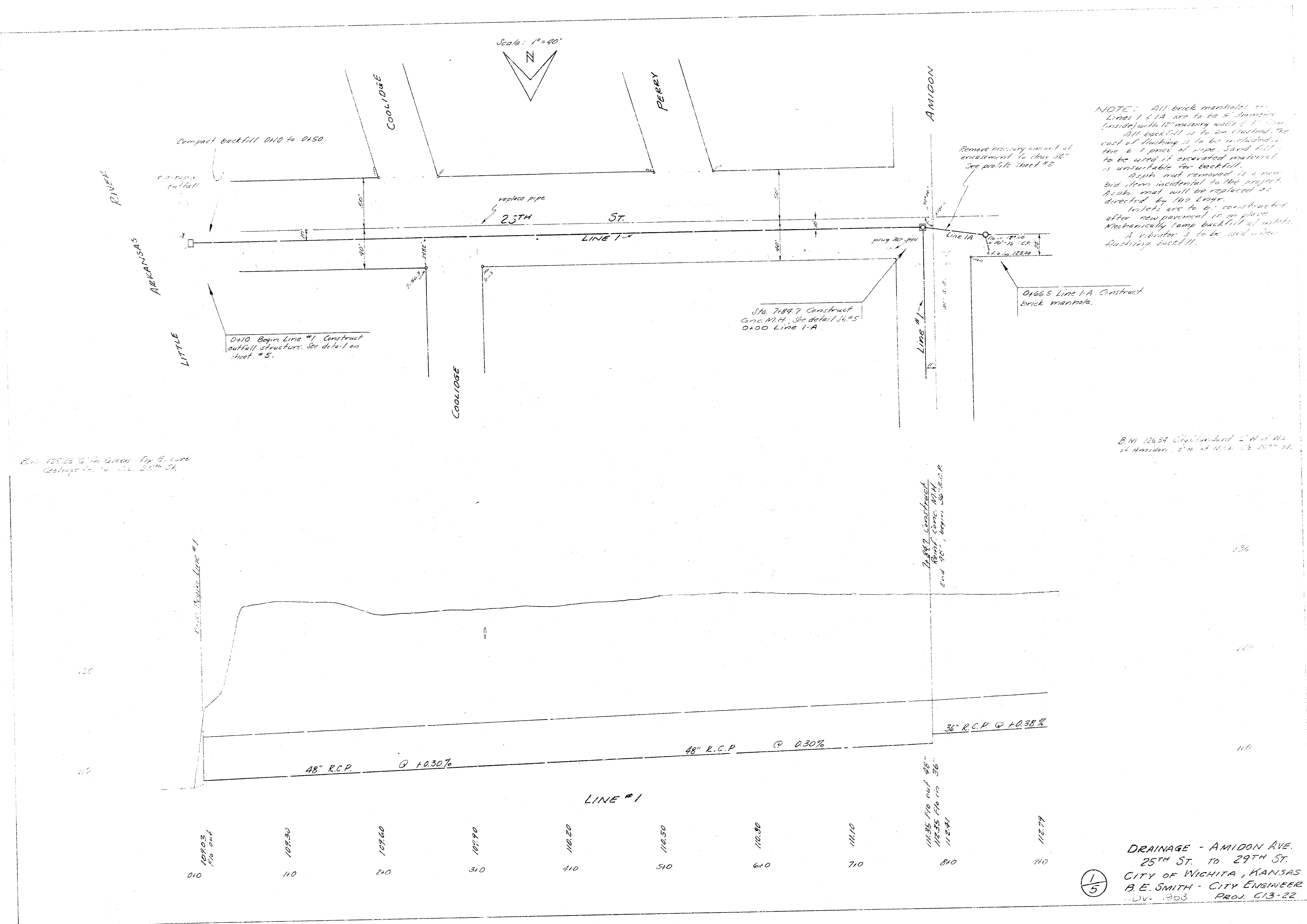
B.M. 121.49 E.E. spike on W side of Pole on E. Side Amidon @ Sta. 21+70



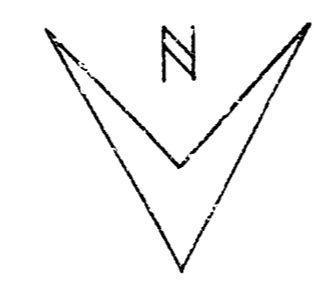
BM 127.56 City Stat. on S.W. Cor. Amidon & 29th St.
 (Note: Use elev. 127.00 on this Plan, only.)



- 7158 to iron @ 29th Street
1. 45.00' SW to nail in bottle cap S.E. side wood lite pole.
 2. 45.40' SE to nail in bottle cap N.E. side wood lite pole.
 3. 36.40' N.E. to nail in bottle cap N.W. side lamp P. pole.



Scale: 1"=40'



NOTE: All brick manholes on Lines 1 & 1-A are to be 2' diameter (inside) with 12" masonry walls. The 24" edge of all is to be finished. The cost of flushing is to be included in the bid price of pipe. Sand fill is to be used if excavated material is unsuitable for backfill. Bids are to be prepared on a non-bid item incidental to the project. Asph. road will be replaced as directed by the Engr. Inlets are to be constructed after new pavement is in place. Mechanically tamp backfill at inlets. A vibrator is to be used when flushing backfill.

11/24/22
 11/24/22
 11/24/22

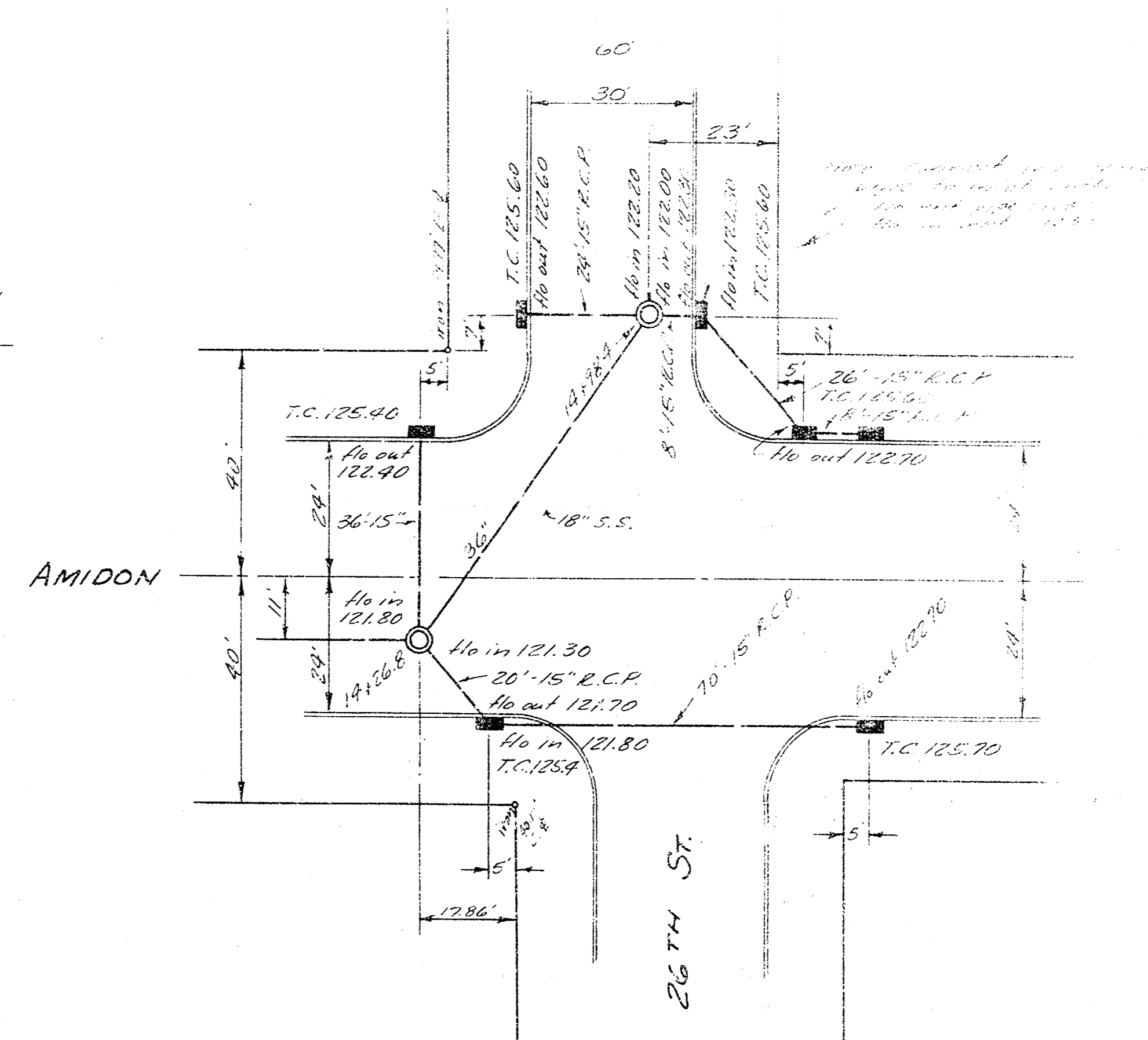
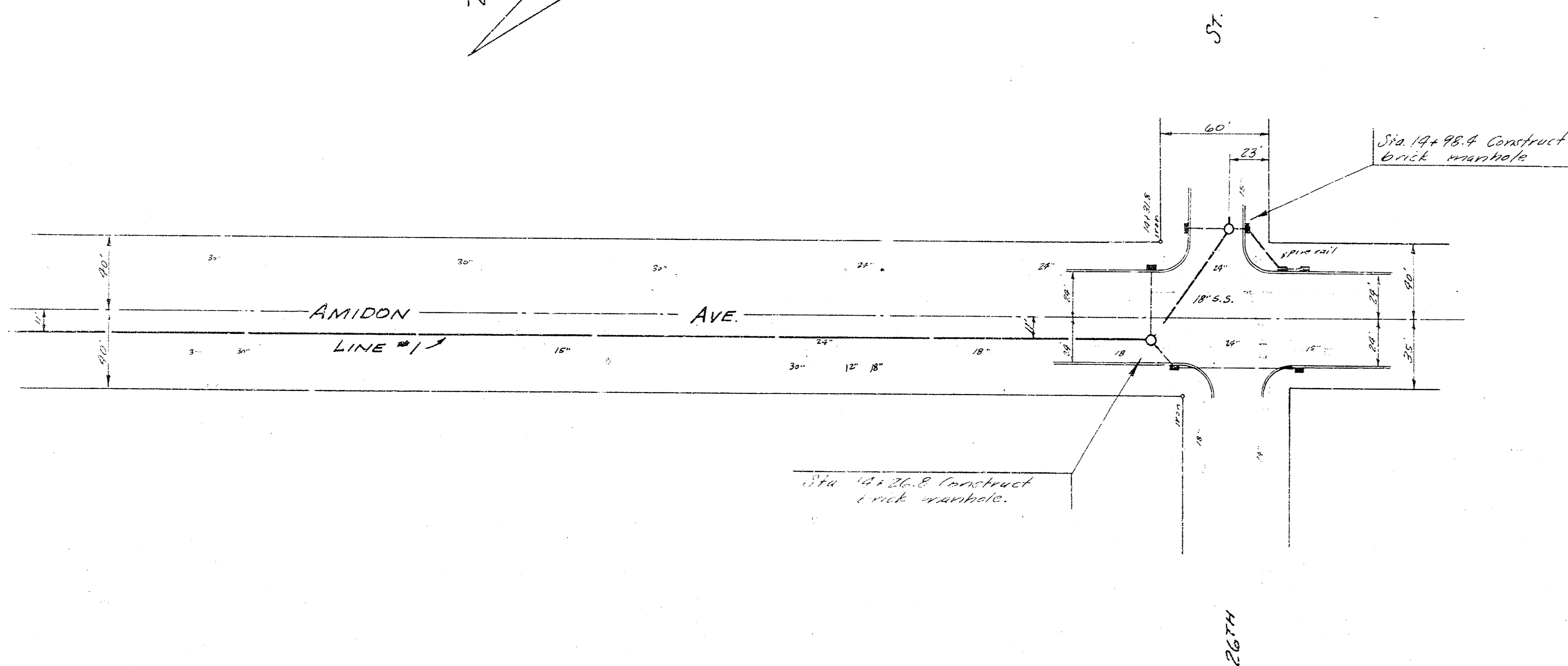
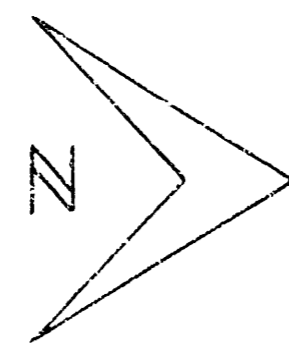
B.M. 125.23 12' in Green Top 2' curb
 (elevation to 25th St.)

B.M. 126.24 City Standard 2' x 4' W.C.
 at Amidon, 2' in. at 1124' & 35" W.C.

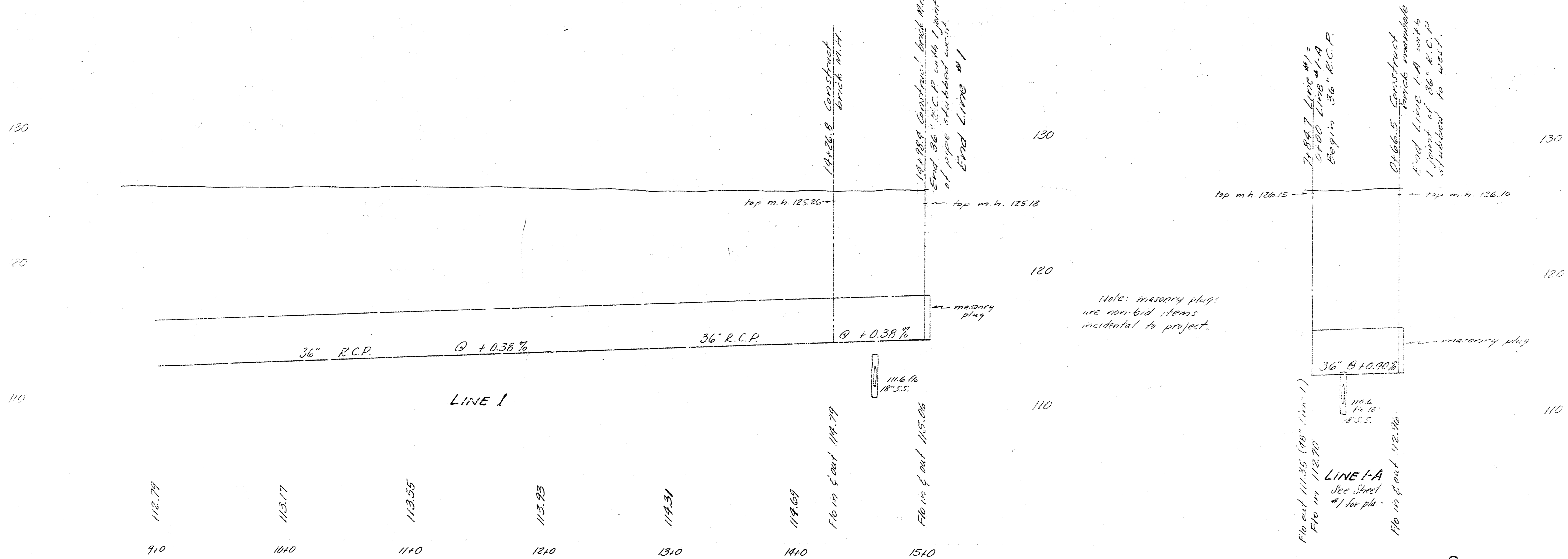
DRAINAGE - AMIDON AVE.
 25TH ST. TO 29TH ST.
 CITY OF WICHITA, KANSAS
 B.E. SMITH - CITY ENGINEER
 NOV. 2023 PROJ. C13-22



Scale: 1" = 90'

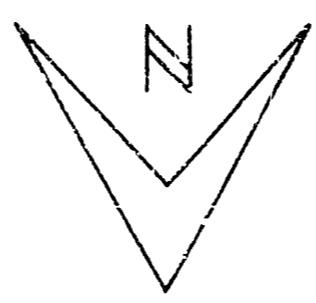


B.M. 126.94 'X' cut on N.W. Cor. Sign base @ S.E. Cor. Amidon & 26th

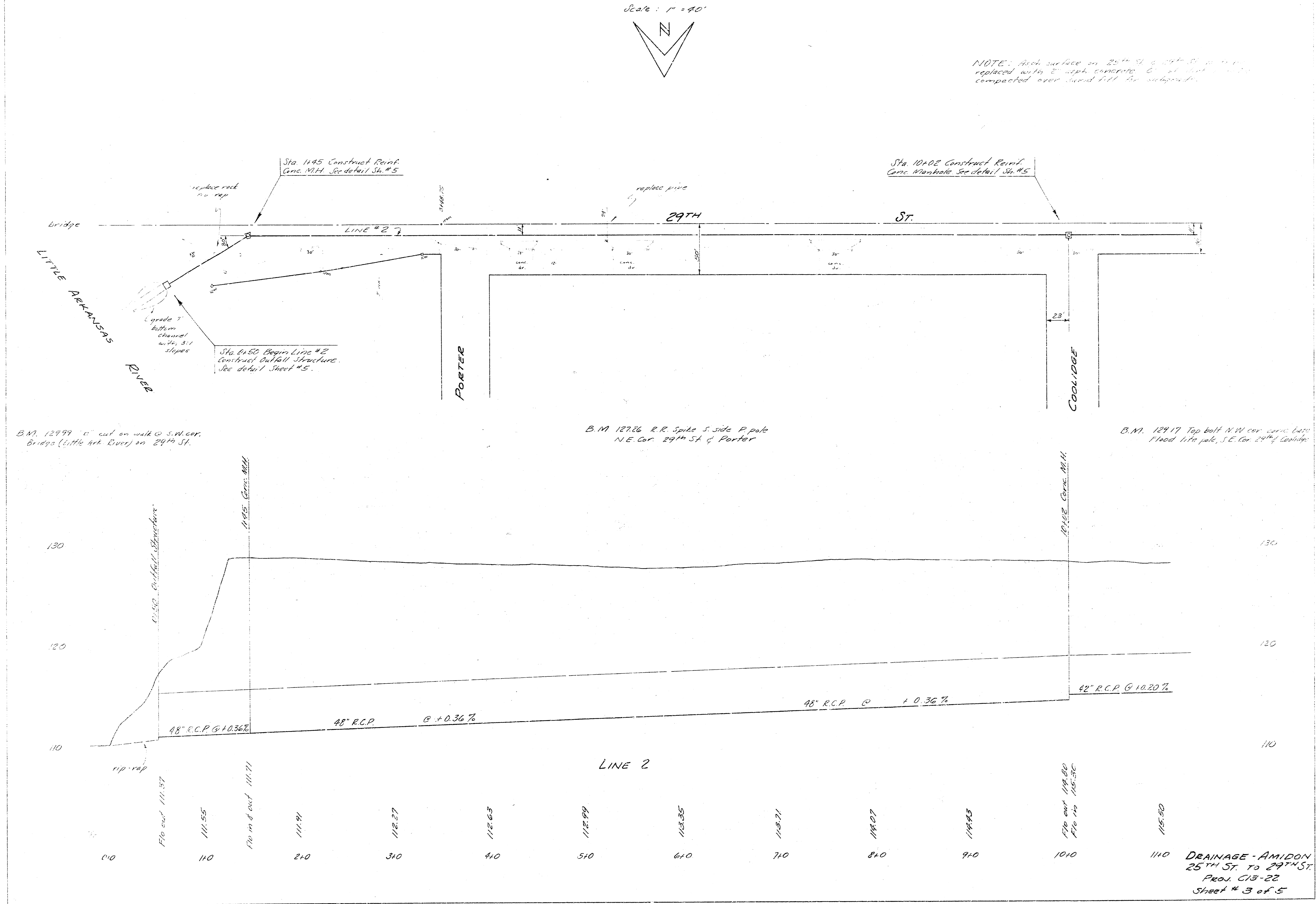


DRAINAGE - AMIDON AVE.
25TH ST. TO 29TH ST.
Proj. C13-22
Sheet # 2 of 5

Scale: 1" = 40'



NOTE: Asch surface on 25th St. & 29th St. to be replaced with 8" asphalt covering 6" of sand & gravel compacted over sand fill for subgrade.



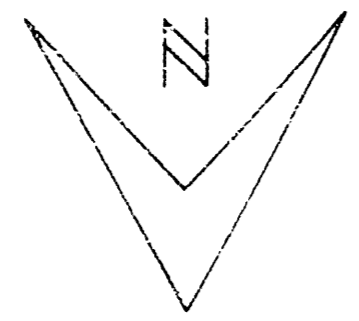
B.M. 12999 1' cut on walk @ S.W. cor. Bridge (Little Ark. River) on 29th St.

B.M. 12726 R.R. Spike S. side P. pole N.E. Cor. 29th St & Porter

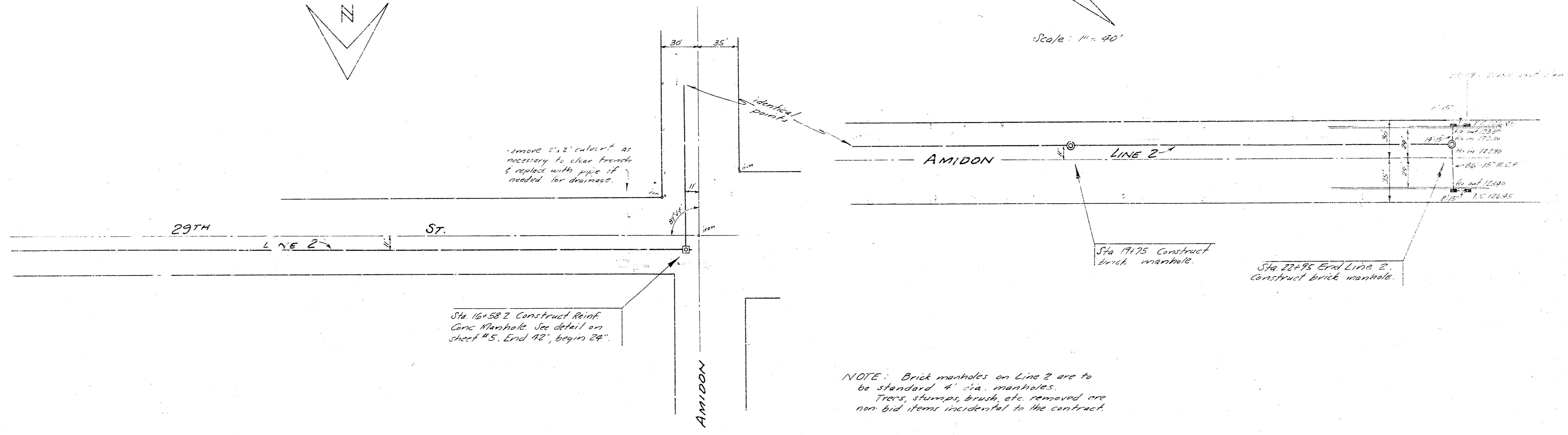
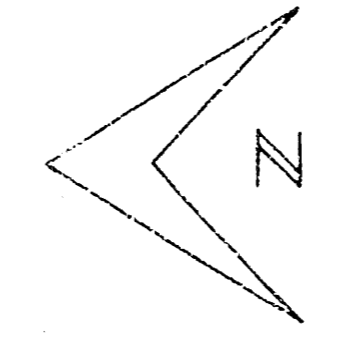
B.M. 12917 Top bolt NW cor. curb base Flood life pole, S.E. Cor. 29th & Coolidge

DRAINAGE - AMIDON
25th St. to 29th St.
Proj. C13-22
Sheet # 3 of 5

Scale: 1" = 40'

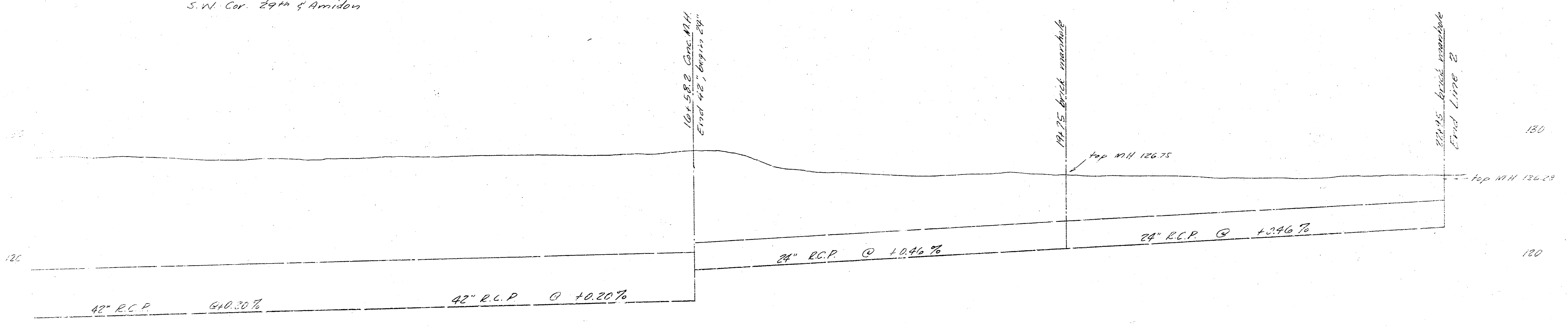


Scale: 1" = 40'



B.M. 127.22 City Standard
S.W. Cor. 29th & Amidon

NOTE: Brick manholes on Line 2 are to be standard 4' dia. manholes. Tiers, stumps, brush, etc. removed are non bid items incidental to the contract.



LINE 2

115.50	115.70	115.90	116.10	116.30	116.50	116.82 Fin and 14.82 119.80	119.84	119.85	120.31	120.77 Fin and 120.66	121.23	121.69	123.10 Fin and 122.13
110	1210	1310	1410	1510	1610	1710	1810	1910	2010	2110	2210	2310	

42" R.C.P. @ +0.30% 42" R.C.P. @ +0.20% 24" R.C.P. @ +0.46% 24" R.C.P. @ +0.46%

16+58.2 Construct Reinf. Conc. Manhole. See detail on sheet #5. End 42", begin 24".

14+75 Construct brick manhole.

22+95 End Line 2. Construct brick manhole.

16+58.2 Conc. MH End 42", begin 24"

14+75 brick manhole

22+95 brick manhole

DRAINAGE - AMIDON
25TH ST. TO 29TH ST.
Proj. C13-22
Sheet # 4 of 5

