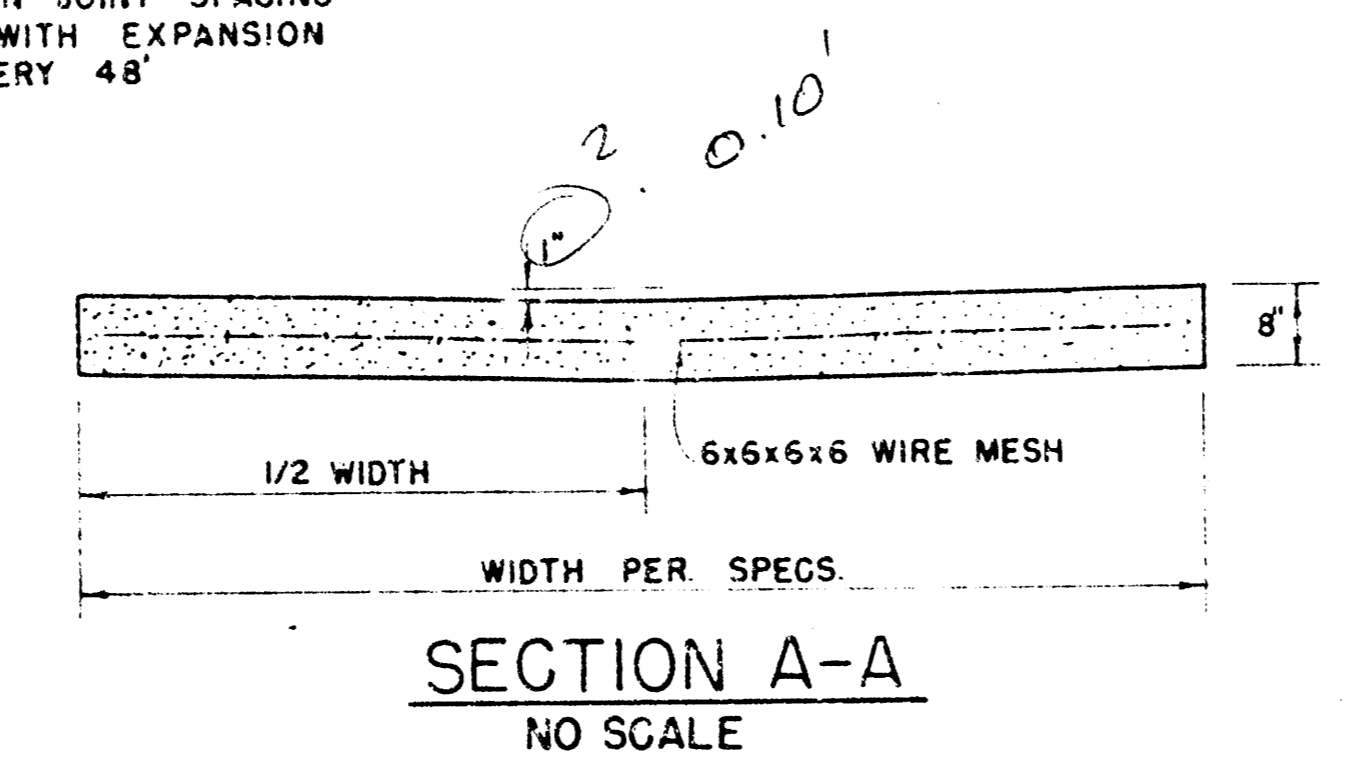
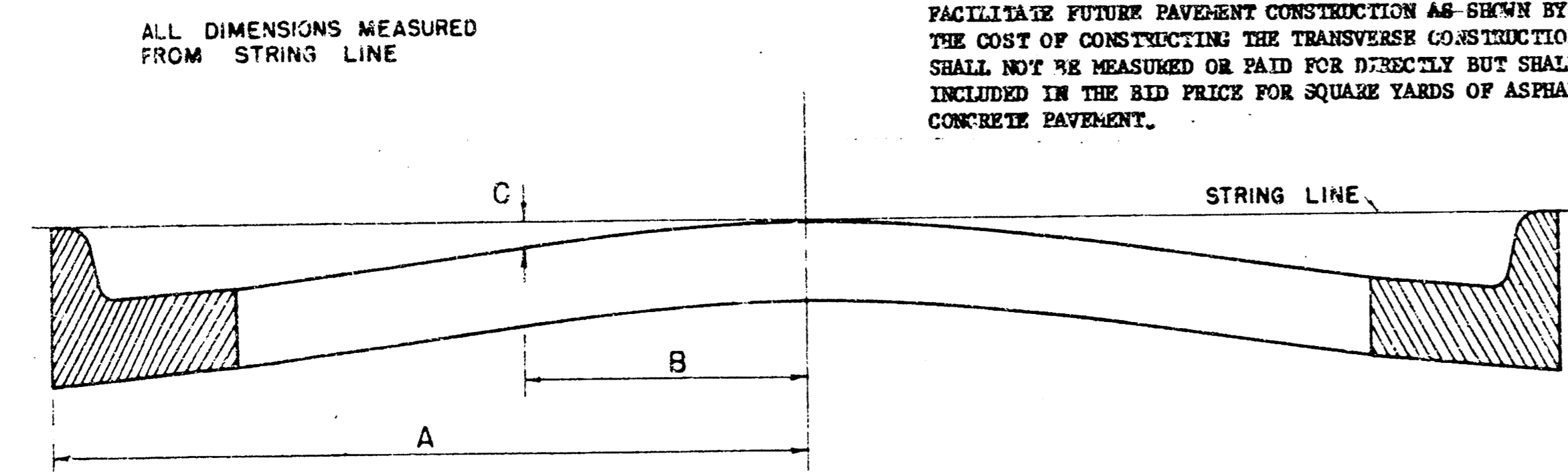


TYPICAL STREET INTERSECTION WITH VALLEY GUTTER
SCALE 1" = 10'

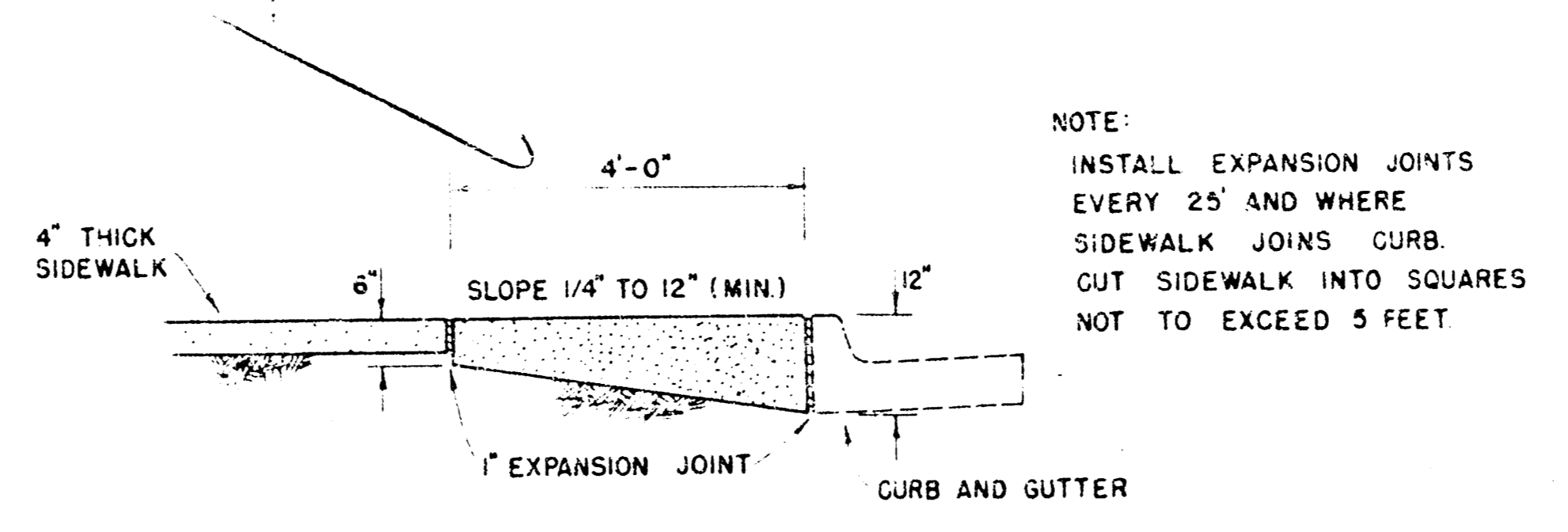


SECTION A-A
NO SCALE

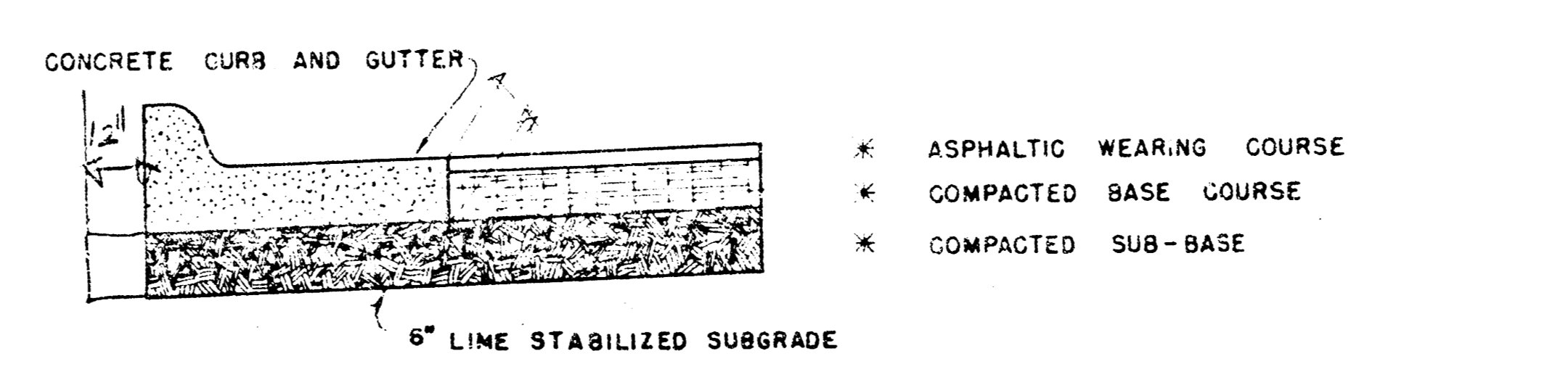


TYPICAL CROSS-SECTION
NO SCALE

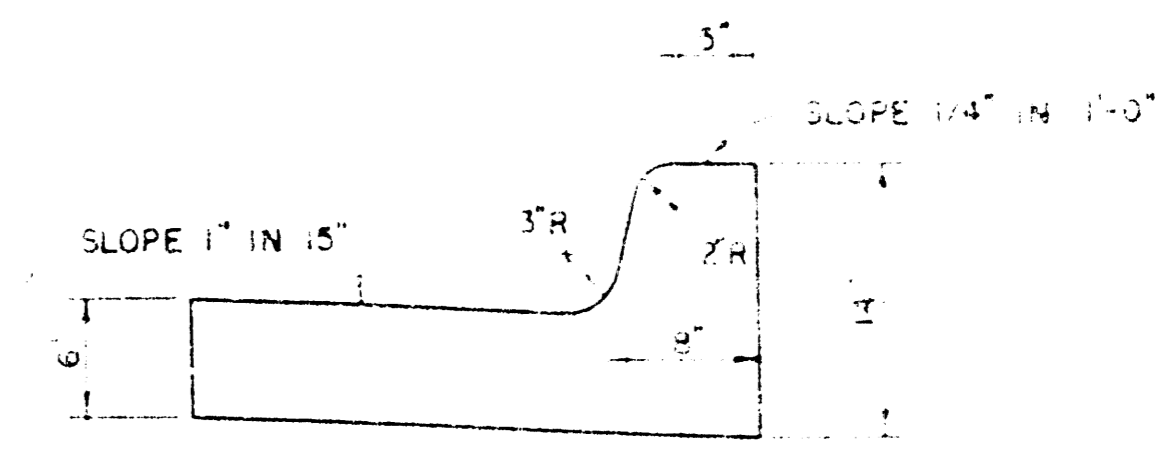
| CROWN DIMENSIONS FOR STREETS WITH STANDARD TYPE A CURB | | | | | |
|--|-------|-------------------|-------|-------|--------|
| WIDTH OF STREET | CROWN | HEIGHT ABOVE CURB | A | B | C |
| 41' | 8" | 0" | 20' | 8.75' | 1 3/4" |
| 36' | 7" | -1" | 18' | 7.75' | 1 1/2" |
| 34' | 6" | -2" | 17' | 7.25' | 1 1/4" |
| 32' | 6" | -2" | 16' | 6.75' | 1 1/4" |
| 31' | 6" | -2" | 15.5' | 6.50' | 1 1/4" |
| 25' | 5" | -3" | 12.5' | 5.00' | 1" |



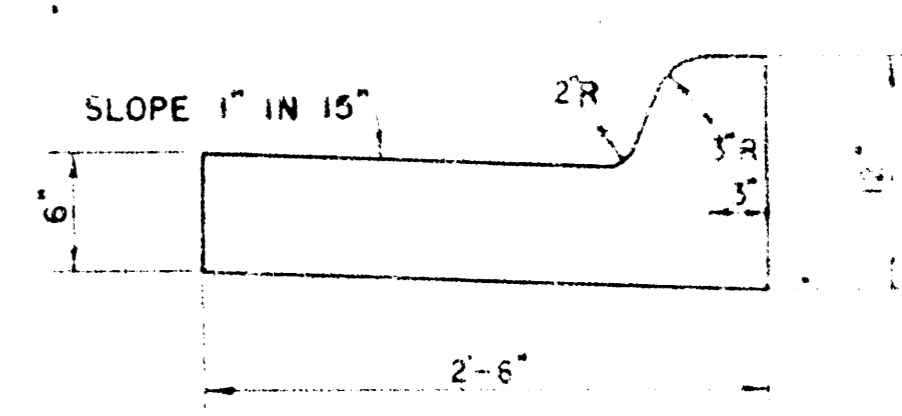
SIDEWALK DETAILS AT INTERSECTIONS
NO SCALE



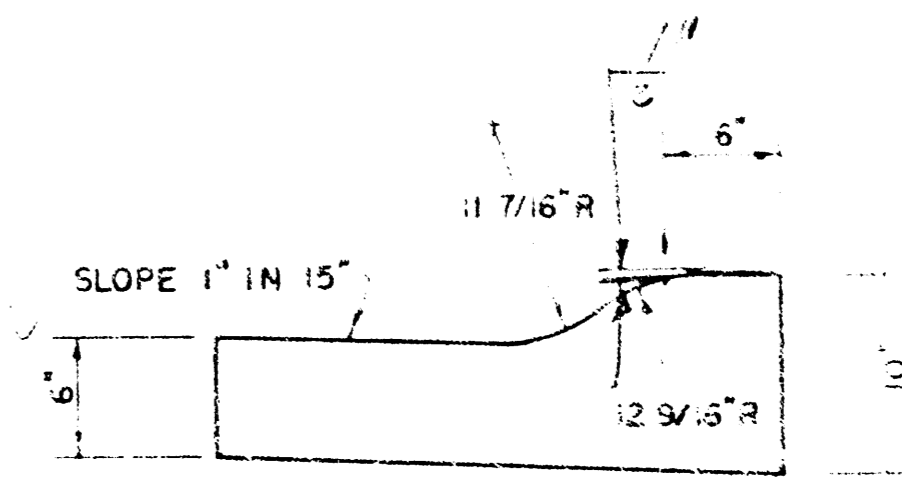
SECTION THROUGH PAVEMENT AND CURB AND GUTTER
NO SCALE



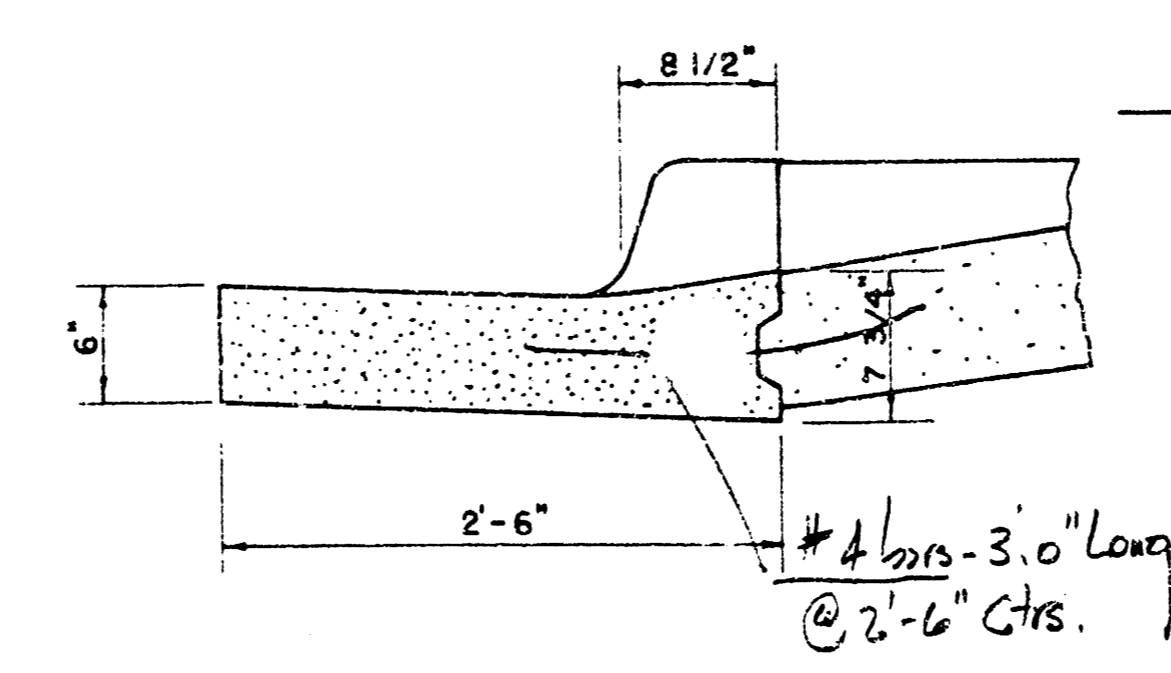
TYPE A
SCALE 1" = 1'-0"



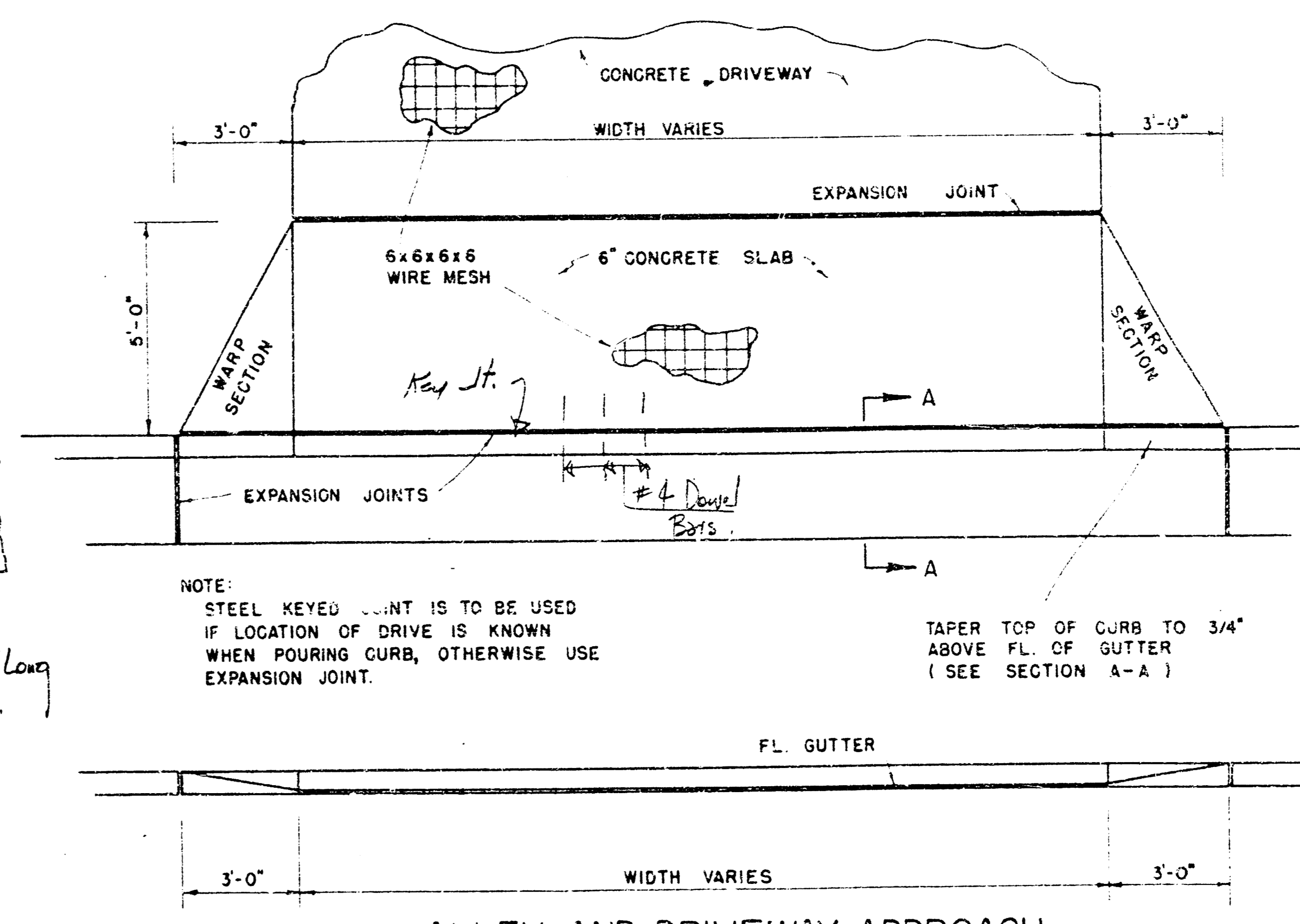
TYPE B
SCALE 1" = 1'-0"



TYPE C
SCALE 1" = 1'-0"



SECTION A-A



ALLEY AND DRIVEWAY APPROACH

DETAIL OF TRANSVERSE CONST. JOINTS

TRANSVERSE CONSTRUCTION JOINTS SHALL BE CONSTRUCTED IN FLEXIBLE BASE PAVEMENTS AT LOCATIONS WHERE PAVEMENT TEMPORARILY ENDS TO FACILITATE FUTURE PAVEMENT CONSTRUCTION AS SHOWN BY DETAIL. THE COST OF CONSTRUCTING THE TRANSVERSE CONSTRUCTION JOINTS SHALL NOT BE MEASURED OR PAID FOR DIRECTLY BUT SHALL BE INCLUDED IN THE BID PRICE FOR SQUARE YARDS OF ASPHALTIC CONCRETE PAVEMENT.

ALL DIMENSIONS MEASURED FROM STRING LINE

NOTE: STEEL KEYED JOINT IS TO BE USED IF LOCATION OF DRIVE IS KNOWN WHEN POURING CURB, OTHERWISE USE EXPANSION JOINT.

TAPER TOP OF CURB TO 3/4" ABOVE FL OF GUTTER (SEE SECTION A-A)

PLANS

STREET IMPROVEMENTS

AULLS FIRST ADDITION


REISS AND GOODNESS ENGINEERS
2160 E. DOUGLAS WICHITA-KANSAS
1975

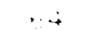
Kenny Hill

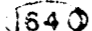
| | |
|-----------|---------|
| DATE | 3-20-75 |
| REVISIONS | |
| SHEET NO | 3 |

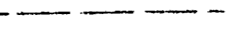
North
Scale 1" = 30'

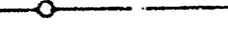
LEGEND


EXISTING CONTOURS 

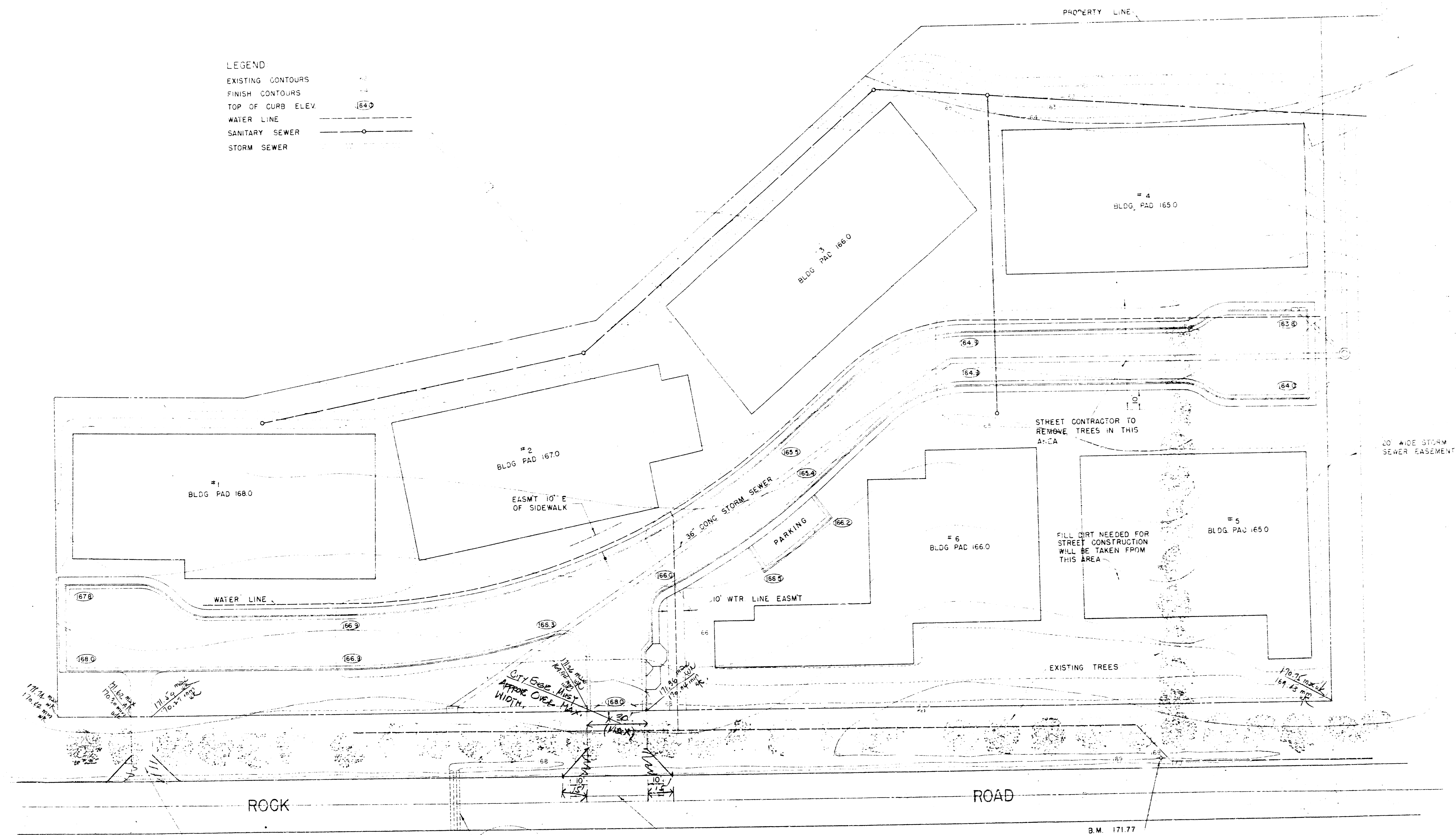
FINISH CONTOURS 

TOP OF CURB ELEV.  164.0

WATER LINE 

SANITARY SEWER 

STORM SEWER 



TRUSS & GORDON ENGINEERS

STREET IMPROVEMENTS
VAN BUSKIRK

PROJECT: VAN BUSKIRK
ENGINEER: TRUSS & GORDON

DATE: 3-20-75

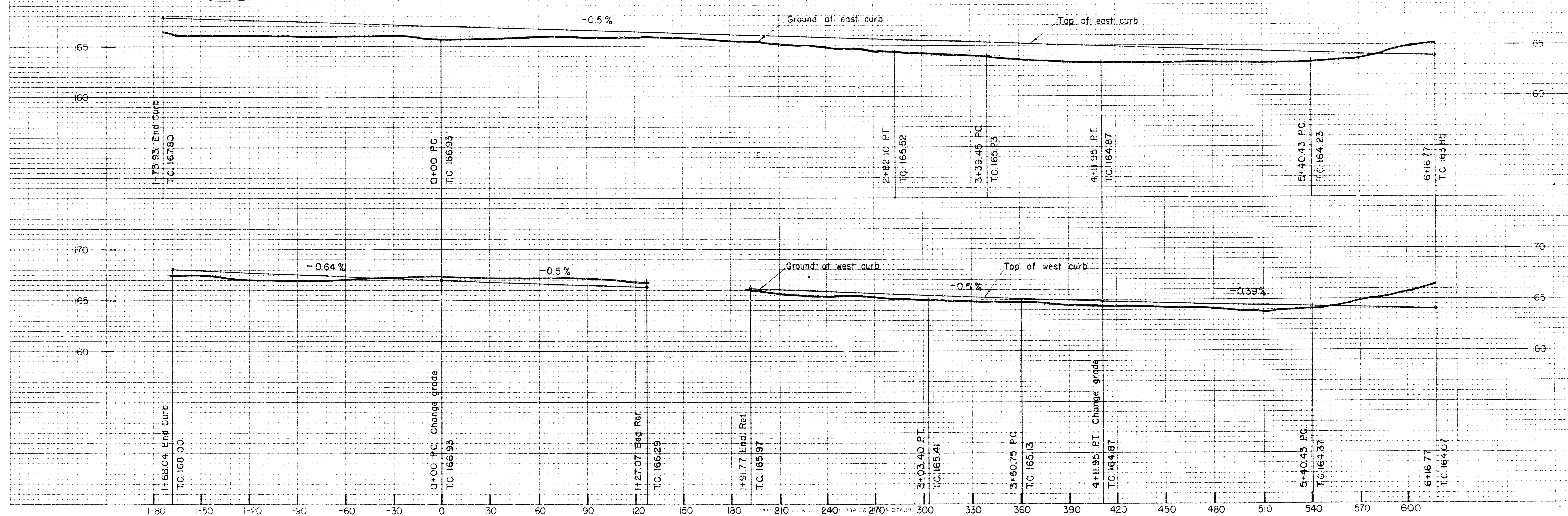
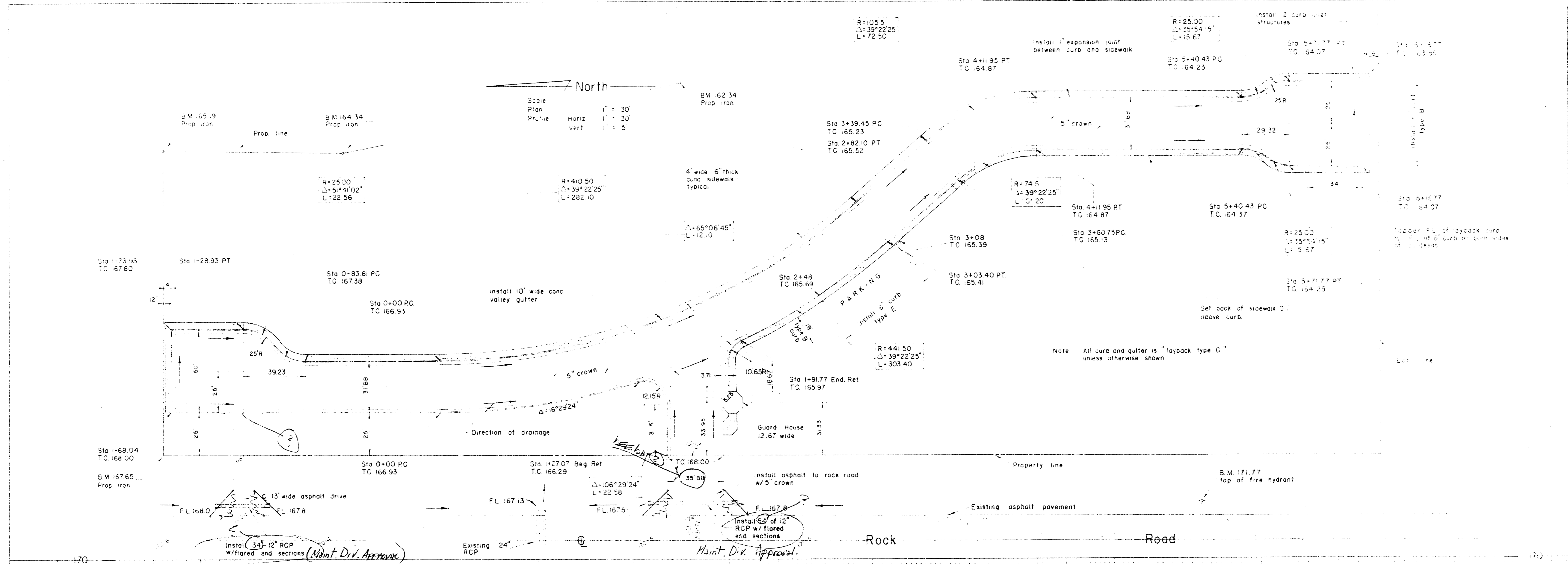
SHEET NO. 2
OF 8

STREET CONTRACTOR TO REMOVE ONLY TREES NEEDED FOR DRIVEWAY CONSTRUCTION

2-EXISTING 24" RCP

STREET CONTRACTOR TO REMOVE TREES IN THIS AREA

B.M. 171.77
TOP OF FIRE HYDRANT



HEISS & ASSOCIATES ENGINEERS
 Consulting Engineers
 1000 14th Street, N.W.
 Seattle, Washington 98107
 Phone: 206-462-1100
 Fax: 206-462-1101
 E-mail: info@heiss.com