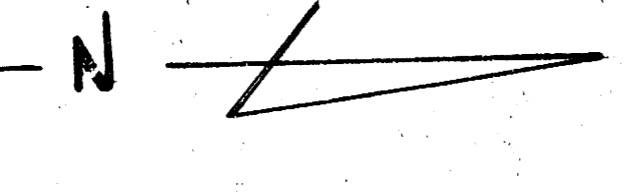
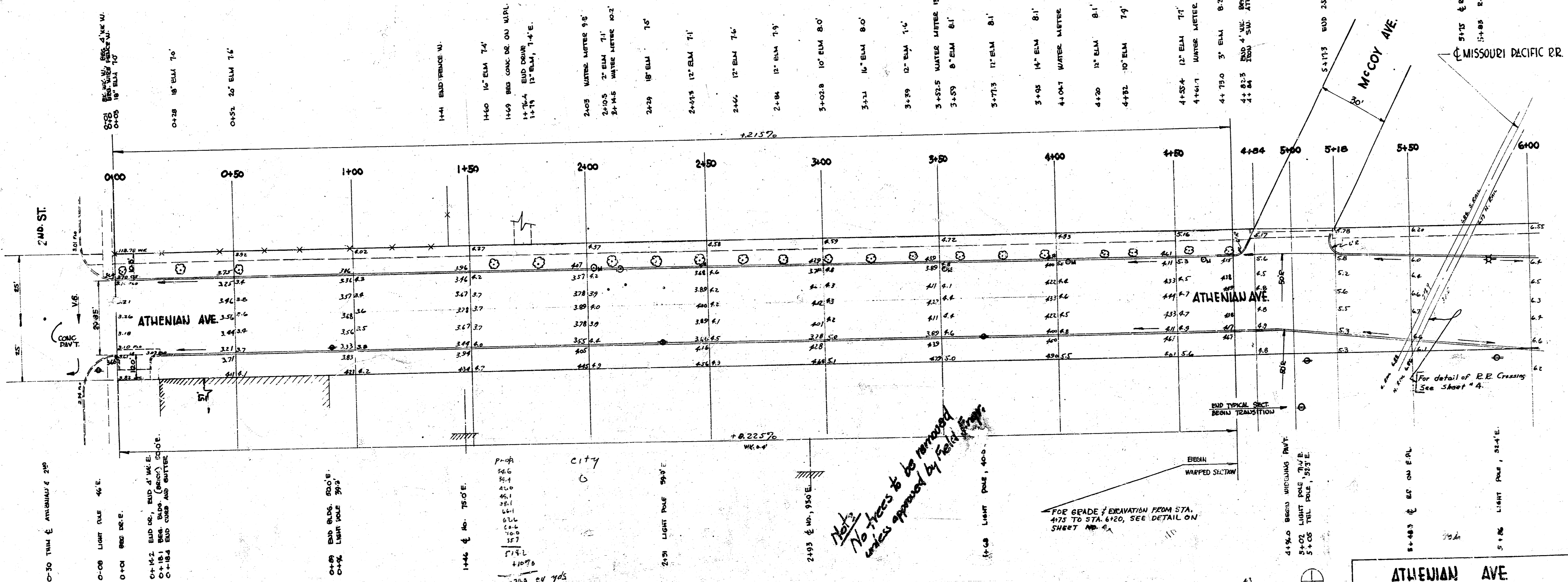


B.M. 113.98 1' ON C. OF CURB RAD. S.W. ST. CLAIR & 2ND
 B.M. 112.92 100' IN THIMBLE C. OF ATHENIAN ST.

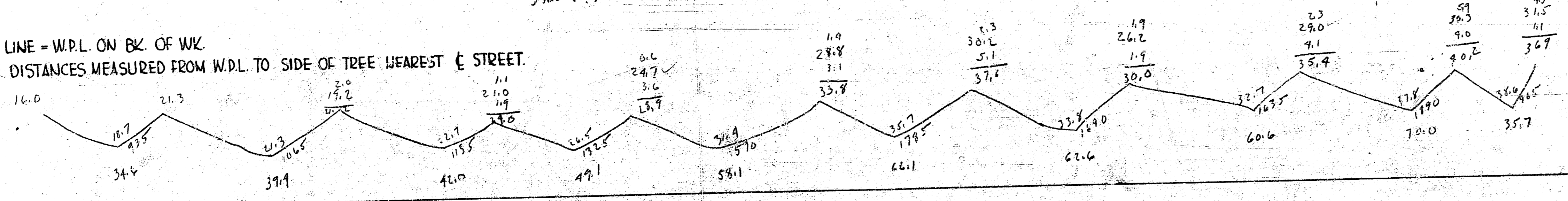


TOTAL
 2.00 1720.0
 1.00 1000.0
 0.80 640.0
 1949.2 cu yds.
 City
 94.8
 3233
 332
 451.3 cu yds.

8K 72 CM



NOTE: BASE LINE = W.P.L. ON BK. OF W.K.
 TREE DISTANCES MEASURED FROM W.P.L. TO SIDE OF TREE NEAREST TO STREET.



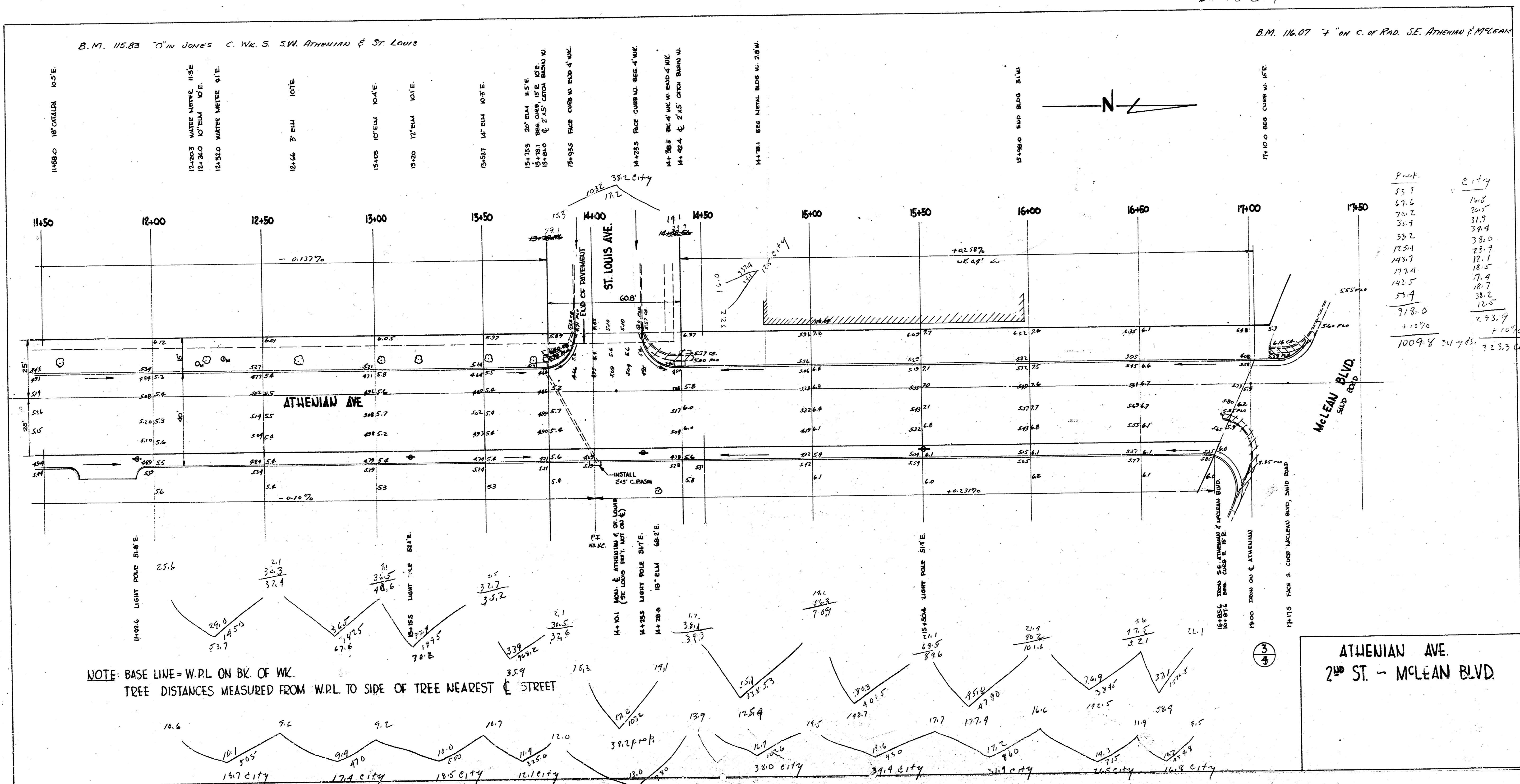
Note:
 No trees to be removed
 unless approved by Field Engineer

ATHENIAN AVE
 2ND ST. MCLEAN BLVD.
 30' CONC. ADD CB.
 CITY OF WICHITA, KANS.
 LK WHITE CITY ENGINEER
 JULY, 1950 PRO. NO. CO-64
 (110-73 C)

Br 72 C 11

B.M. 115.83 "O" in JONES C. Wk. S. SW. ATHENIAN & ST. LOUIS

B.M. 116.07 "A" on C. of RAD. SE. ATHENIAN & McLEAN

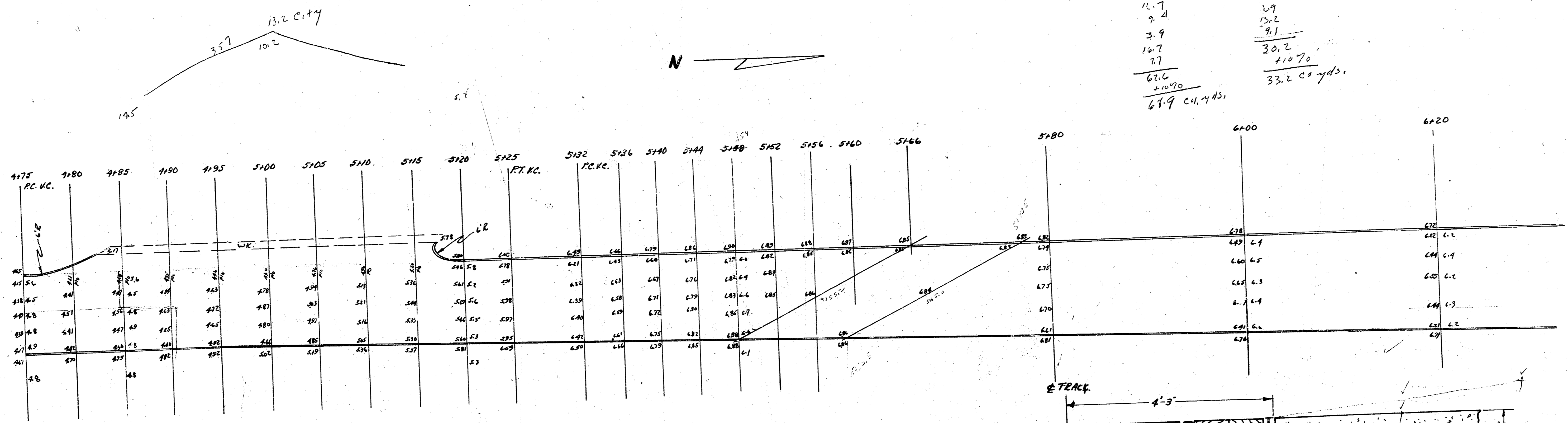


PAOP
 12.2
 12.7
 9.4
 3.9
 10.7
 7.7

 62.6
 +1070
 649 cu. yds.

CITY
 0.7
 4.3
 2.9
 15.2
 9.1

 30.2
 +1070
 332 cu. yds.



DETAIL
 For grade of excavation Sta 475 to Sta 620
 No Scale

