

PEDESTRIAN LIGHTING IMPROVEMENTS DEMONSTRATION AREA WICHITA, KANSAS COMMUNITY DEVELOPMENT PROJECT

Urban Renewal Agency
 of Wichita, Kansas
 Board of Commissioners

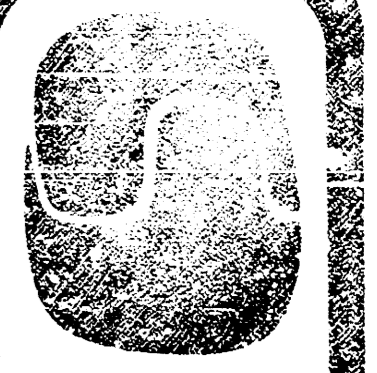
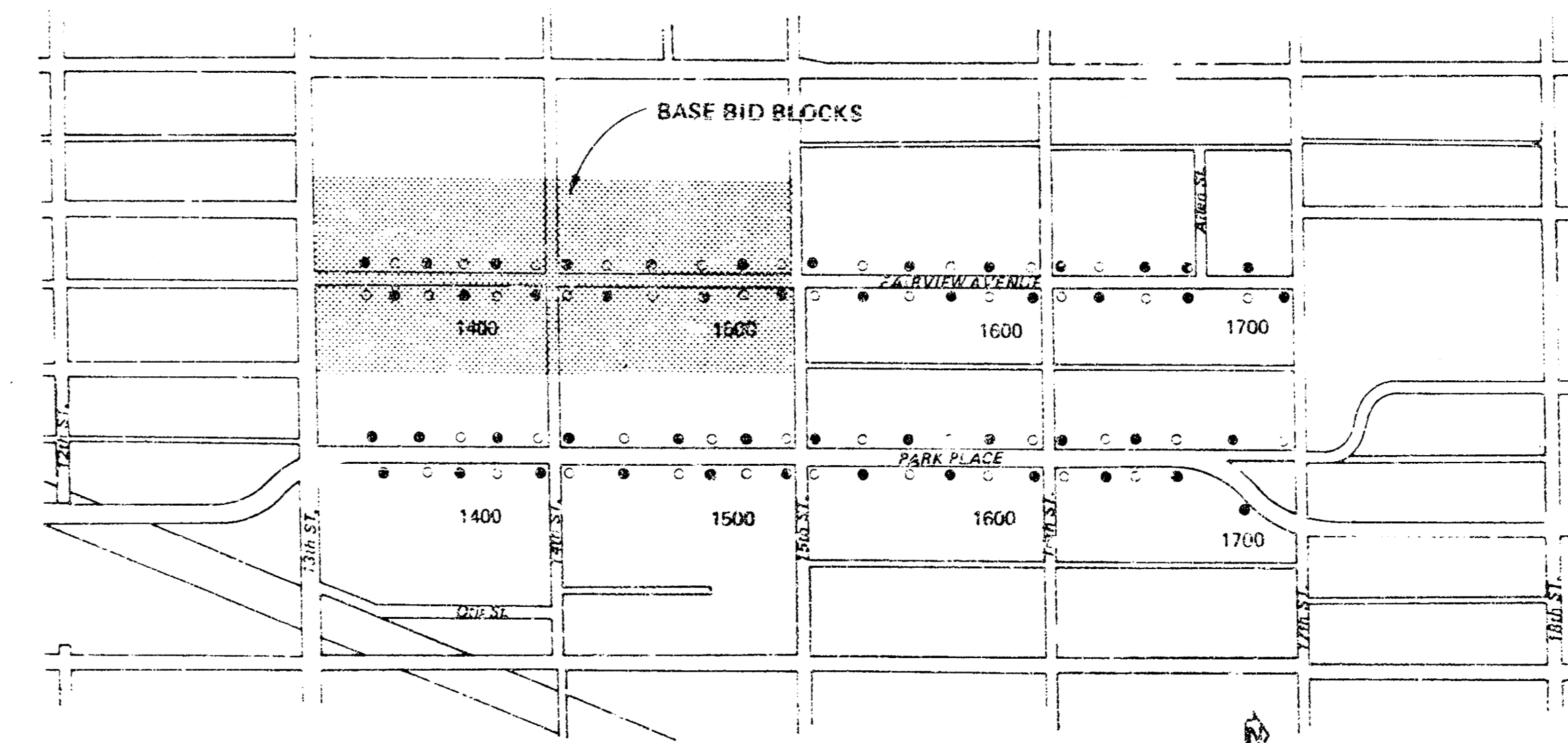
William C. Cohen, Jr.	Chairman
Morris J. Krouse	Commissioner
Othello H. Curry	Commissioner
R. A. Cowdrey	Commissioner
Garry L. Porter	Commissioner
Kenneth H. Kitchen	Executive Director

City of Wichita, Kansas
 City Commissioners

James M. Donnell	Mayor
Glenn J. Shanahan	Commissioner
A. F. Casado	Commissioner
Connie A. Peters	Commissioner
Robert I. Cery	Commissioner

Sheet Index

SHEET NO.	TITLE
1.	TITLE SHEET
2.	LIGHTING PLAN - FAIRVIEW AVENUE - 1400 BLOCK
3.	LIGHTING PLAN - FAIRVIEW AVENUE - 1500 BLOCK
4.	LIGHTING PLAN - FAIRVIEW AVENUE - 1600 BLOCK
5.	LIGHTING PLAN - FAIRVIEW AVENUE - 1700 BLOCK
6.	LIGHTING PLAN - PARK PLACE - 1400 BLOCK
7.	LIGHTING PLAN - PARK PLACE - 1500 BLOCK
8.	LIGHTING PLAN - PARK PLACE - 1600 BLOCK
9.	LIGHTING PLAN - PARK PLACE - 1700 BLOCK
10.	DETAILS



**Ringier-Smith
 CORPORATION**
 Research, Planning,
 Design and Construction
 225 West 10th Street
 Wichita, Kansas 67202

Design by: TOM MUSTKOMERY
 Engr. Tech. MARTHA GLOVER
 Checked by:

Project
 PEDESTRIAN LIGHTING IMPROVEMENTS
 DEMONSTRATION AREA
 WICHITA, KANSAS
 SEPTEMBER 10, 1975

Sheet Title
 TITLE SHEET

Sheet
1
 OF 10

RESEEDING OF LAWN AREAS:

Materials:

All seed shall be furnished in sealed, standard containers, unless otherwise approved. Seed which has become wet, moldy, or otherwise damaged will not be acceptable. The minimum percentage by weight of pure live seed shall be as follows:

Per cent	Scientific Name	Common Name	Min. Per cent Pure Live Seed
40	Lolium perenne	Pennfard Rye	80
20	Poa pratensis	Pennstar Bluegrass	80
20	Foa pratensis	Kentucky Bluegrass	80
20	Poa pratensis	Fylking Bluegrass	80

Maximum per cent weed seed is 3 per cent with not more than five (5) noxious weed seeds per ounce.

Seeding:

All seeding work shall be done between the dates of April 15 - June 1 and September 15 - October 15, except as otherwise directed in writing by the Landscape Architect. An approved method of sowing shall be employed. Seed shall be applied at the rate of three (3) pounds per one thousand (1,000) square feet.

Reseeding:

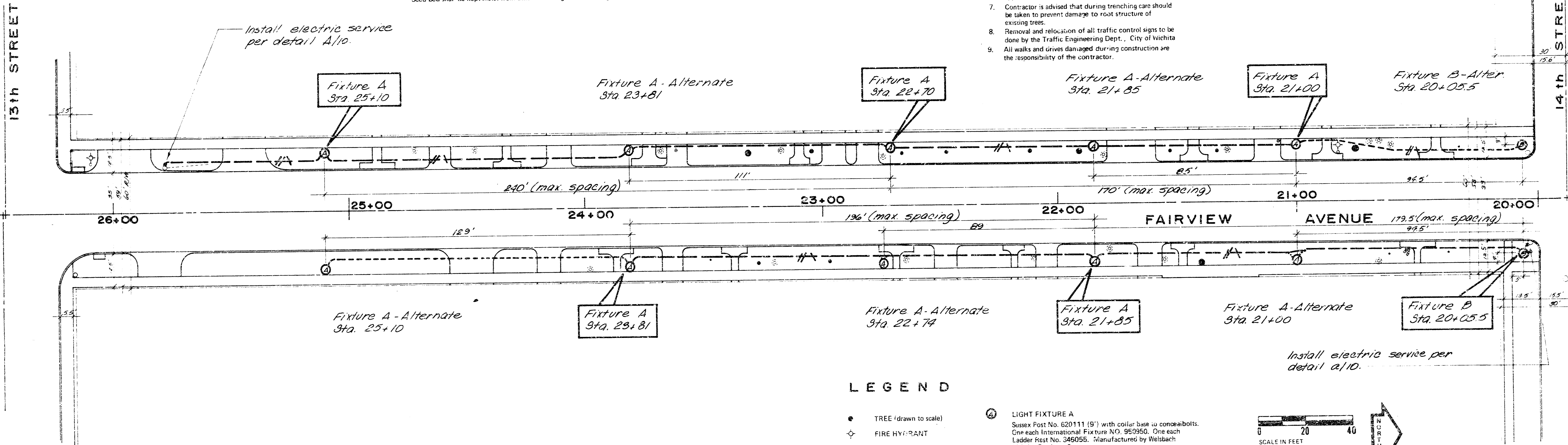
Areas that require reseeding will be designated by the Landscape Architect at least fifteen (15) days prior to the period specified for reseeding. Reseeding shall be sown at the rate of three (3) pounds per 1,000 square feet, in a manner that will cause a minimum of disturbance to the existing stand of grass.

Watering:

Contractor shall be responsible for watering and proper care of the seeded areas for a period of thirty (30) days when the grass is becoming established. Seed bed shall be kept moist from time of seeding until lawn is germinated.

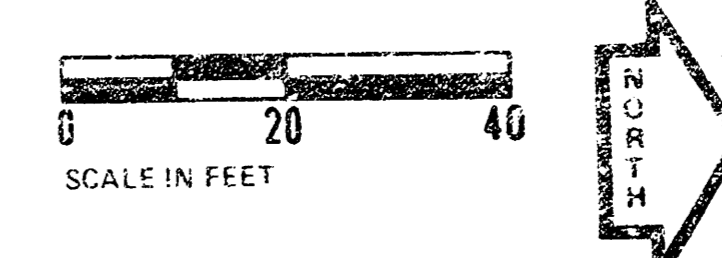
GENERAL NOTES

- Trenching as shown on the drawings is a suggested location. Contractor may relocate as needed. Contractor is responsible for all damage incurred to underground utilities during trenching. He shall repair all damage to same as required by Engineer at no additional cost to owner.
- The locations of all utilities shown on the plans represent the best information available but such locations are not guaranteed. The Contractor shall make every effort to ascertain the locations of public and private utilities. The Contractor shall notify the affected parties so that proper arrangements can be made for the prompt repair and restoration of service when any utilities are unexpectedly encountered and damaged. Public and private utility facilities which interfere with construction shall be bypassed or worked around by hand excavating, tunneling, or other approved methods without additional cost to the owner. Where it is not practical to bypass or work around the utility, the contractor shall notify the affected utility owner so that provisions for the removal and relocation of such utility can be made. The contractor shall notify all affected utility companies in advance of construction operations in areas where public or private utilities may be encountered.
- All mid-block light fixtures shall be installed flush with the adjacent sidewalk placing a 1/2-inch expansion joint between. Light fixtures at corner locations are as noted.
- All lawn areas disturbed during trenching shall be leveled and reseeded.
- Contractor is to push conduit under walks and drives.
- Contractor is to trim branches of existing trees as required to clear light fixtures. Such trimming shall be done as recommended and approved by the Landscape Architect. All tree wounds of 1/2" or larger shall be painted with approved tree paint.
- Contractor is advised that during trenching care should be taken to prevent damage to root structure of existing trees.
- Removal and relocation of all traffic control signs to be done by the Traffic Engineering Dept., City of Wichita.
- All walks and drives damaged during construction are the responsibility of the contractor.



LEGEND

- TREE (drawn to scale)
- ◆ FIRE HYDRANT
- WATER VALVE
- GAS VALVE
- MANHOLE
- WATER METER
- TRAFFIC SIGNAL
- LIGHT STANDARD
- UTILITY POLE
- LIGHT POLE
- POLE WITH GUY WIRE
- ▲ TRAFFIC SIGN
- ▲ STREET SIGN
- PROPERTY LINE
- ⊕ SHRUB
- ⊙ LIGHT FIXTURE A
Sussex Post No. 620111 (9") with collar base w/ concealed bolts.
One each International Fixtures No. 950950. One each
Ladder Post No. 346055. Manufactured by Welsbach
Lighting Products Co.
- ⊙ LIGHT FIXTURE B
Sussex Post No. 825111 (12") with collar base w/ concealed bolts.
Two each International Fixtures No. 950950 on 2-line
collar with ornamental spoolis No. 346112. One each
Ladder Post No. 346076. Manufactured by Welsbach
Lighting Products Co.
- 2 No. 8 and 1 No. 10 GRD - 3/4" PVC Conduit at maximum spacing
- 2 No. 8 and 1 No. 10 GRD - 3/4" PVC Conduit at alternate spacing
- INDICATES LIGHT FIXTURE AT MAXIMUM SPACING.



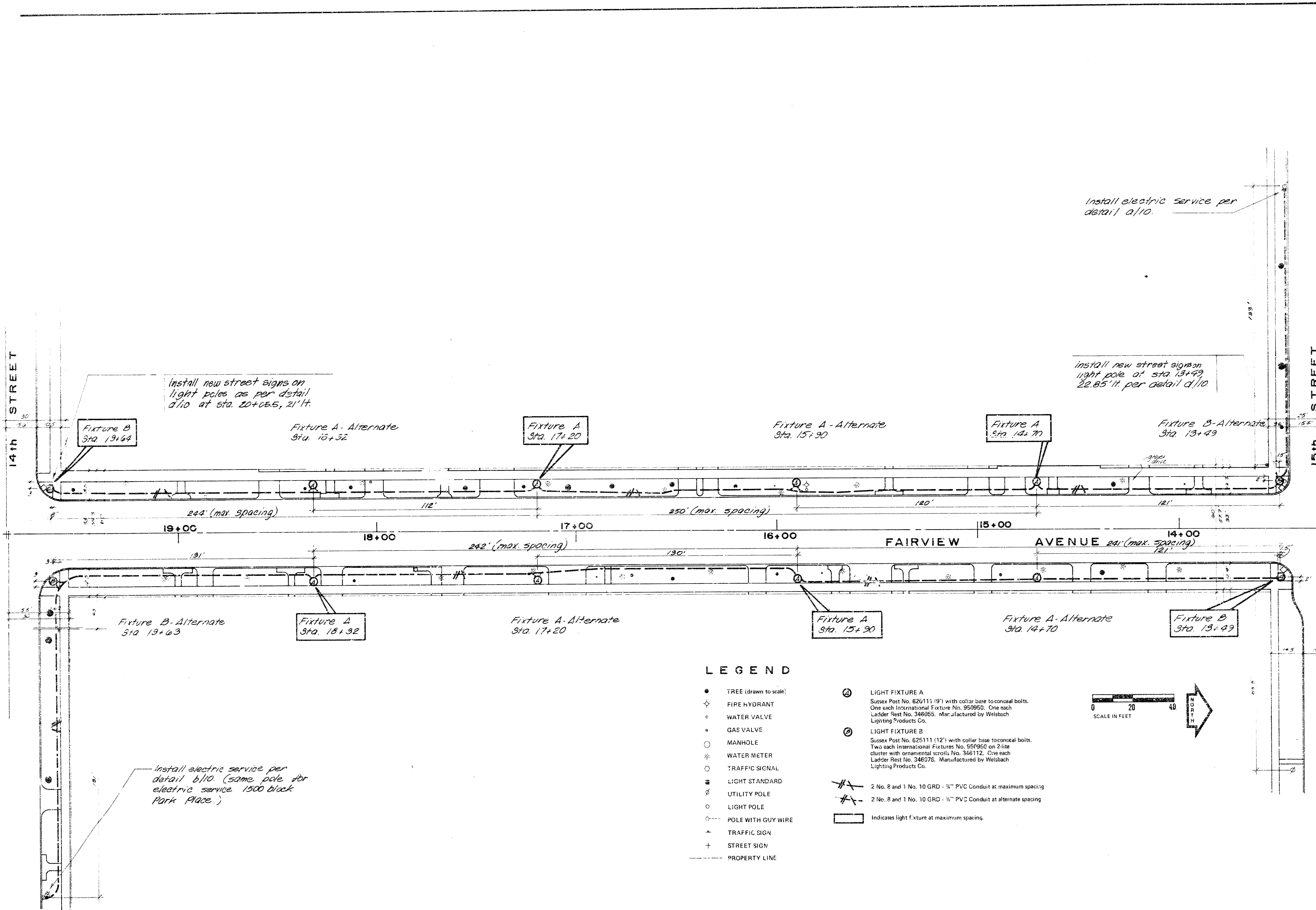
ottinger-smith corporation
 Consulting Engineers, Architects, Planners
 1231 East Main Street, Wichita, Kansas 67202
 Phone: 361-1111

Designed by TOM MORTGONERY
 Eng. Tech. MARTIN GLOVER
 Checked by _____

Project
 PEDESTRIAN LIGHTING IMPROVEMENTS
 ADMINISTRATION AREA
 WICHITA, KANSAS
 SEPTEMBER 10, 1976

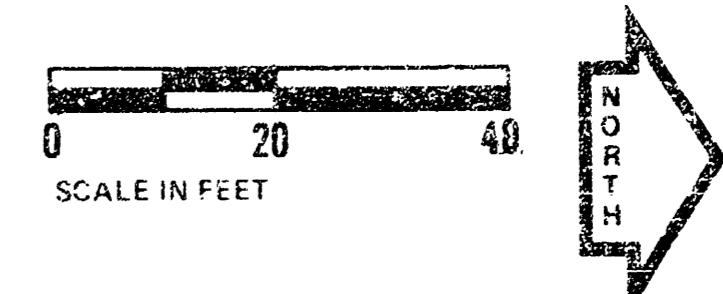
Sheet Title
 LIGHTING PLAN
 FAIRVIEW AVENUE
 14th BLOCK

Sheet
 10



LEGEND

- TREE (drawn to scale)
 - ◇ FIRE HYDRANT
 - WATER VALVE
 - GAS VALVE
 - MANHOLE
 - ⊗ WATER METER
 - TRAFFIC SIGNAL
 - ▣ LIGHT STANDARD
 - ⊕ UTILITY POLE
 - LIGHT POLE
 - POLE WITH GUY WIRE
 - ▲ TRAFFIC SIGN
 - ⊕ STREET SIGN
 - PROPERTY LINE
- ② LIGHT FIXTURE A
Sussex Post No. 62U111 (9') with collar base to conceal bolts. One each International Fixture No. 950950. One each Ladder Rest No. 346055. Manufactured by Weisbach Lighting Products Co.
 - ③ LIGHT FIXTURE B
Sussex Post No. 625111 (12') with collar base to conceal bolts. Two each International Fixtures No. 950950 on 2-lite cluster with ornamental scrolls No. 346112. One each Ladder Rest No. 346076. Manufactured by Weisbach Lighting Products Co.
 - 2 No. 8 and 1 No. 10 GRD - 3/4" PVC Conduit at maximum spacing
 - 2 No. 8 and 1 No. 10 GRD - 3/4" PVC Conduit at alternate spacing
 - ▭ Indicates light fixture at maximum spacing.



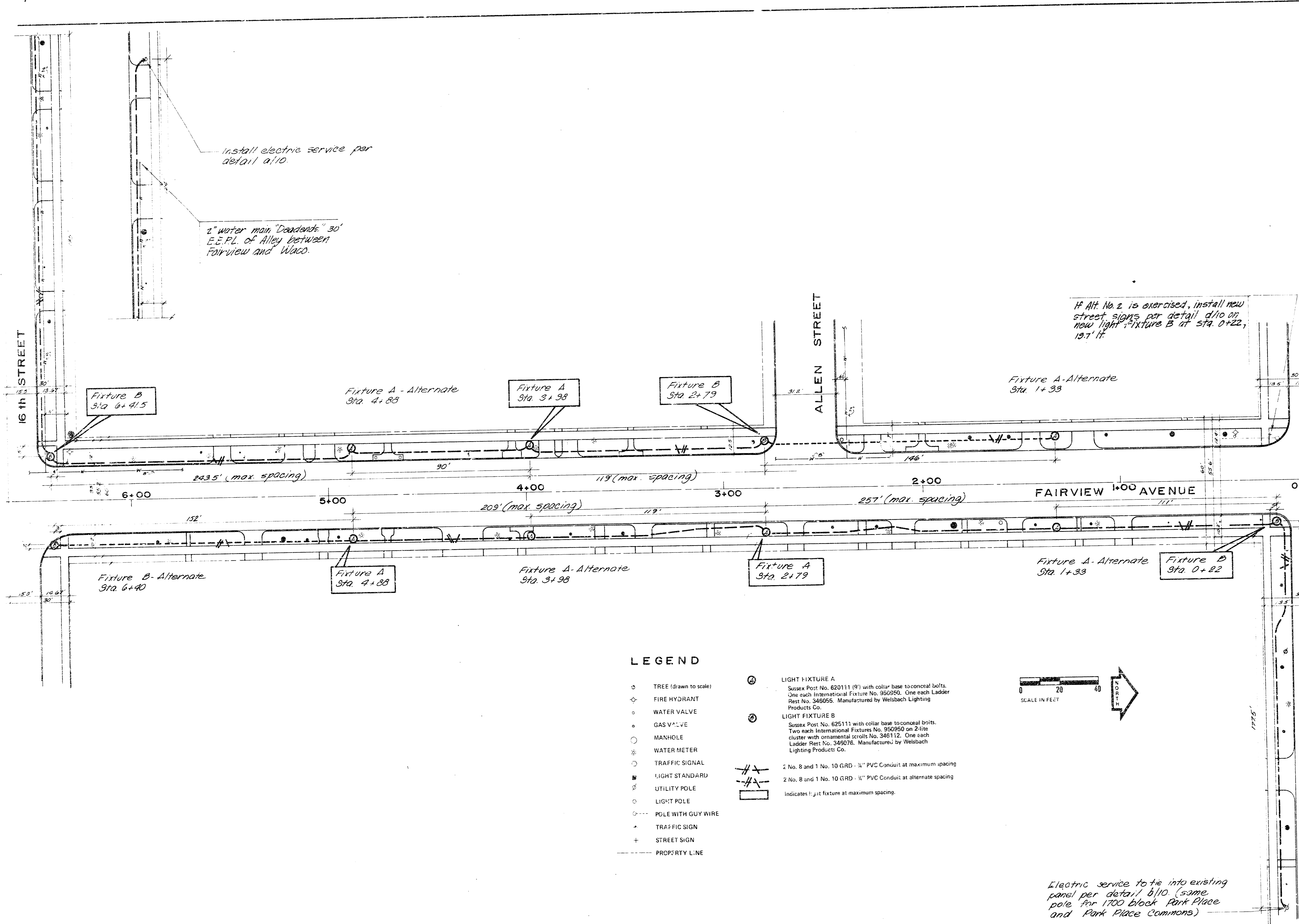
obinger-smith corporation

Designed by TOM MONTGOMERY
Checked by MARTHA GLOVER

Project
PEDESTRIAN LIGHTING IMPROVEMENTS
DEMONSTRATION AREA
WICHITA, KANSAS

Sheet Title
LIGHTING PLAN
FAIRVIEW AVENUE
15th BLOCK

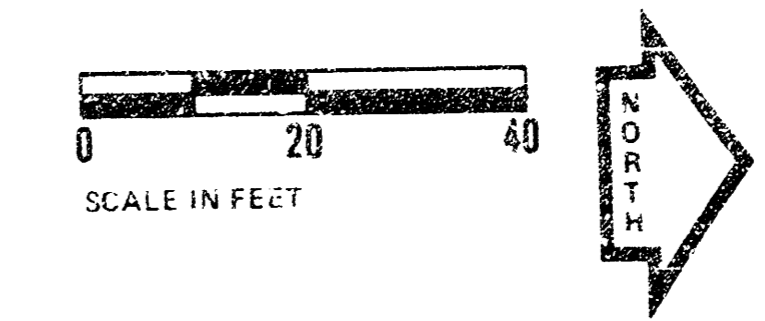
SEPTEMBER 10, 1976



If Alt. No. 2 is exercised, install new street signs per detail d/10 or new light fixture B at Sta. 0+22, 19.7' ft.

LEGEND

- TREE (drawn to scale)
 - ⊕ FIRE HYDRANT
 - WATER VALVE
 - GAS VALVE
 - MANHOLE
 - ⊗ WATER METER
 - TRAFFIC SIGNAL
 - ⊠ LIGHT STANDARD
 - ⊕ UTILITY POLE
 - LIGHT POLE
 - POLE WITH GUY WIRE
 - ⊕ TRAFFIC SIGN
 - ⊕ STREET SIGN
 - PROPERTY LINE
- ⊙ LIGHT FIXTURE A
Sussex Post No. 620111 (9') with collar base to conceal bolts. One each International Fixture No. 950950. One each Ladder Rest No. 345055. Manufactured by Welsbach Lighting Products Co.
 - ⊙ LIGHT FIXTURE B
Sussex Post No. 625111 with collar base to conceal bolts. Two each International Fixtures No. 950950 on 2-lite cluster with ornamental scrolls No. 346112. One each Ladder Rest No. 345076. Manufactured by Welsbach Lighting Products Co.
 - 2 No. 8 and 1 No. 10 GRD - 3/4" PVC Conduit at maximum spacing
 - 2 No. 8 and 1 No. 10 GRD - 3/4" PVC Conduit at alternate spacing
 - Indicates 1:24 fixture at maximum spacing.



Electric service to tie into existing panel per detail b/10. (same pole for 1700 block Park Place and Park Place Commons)

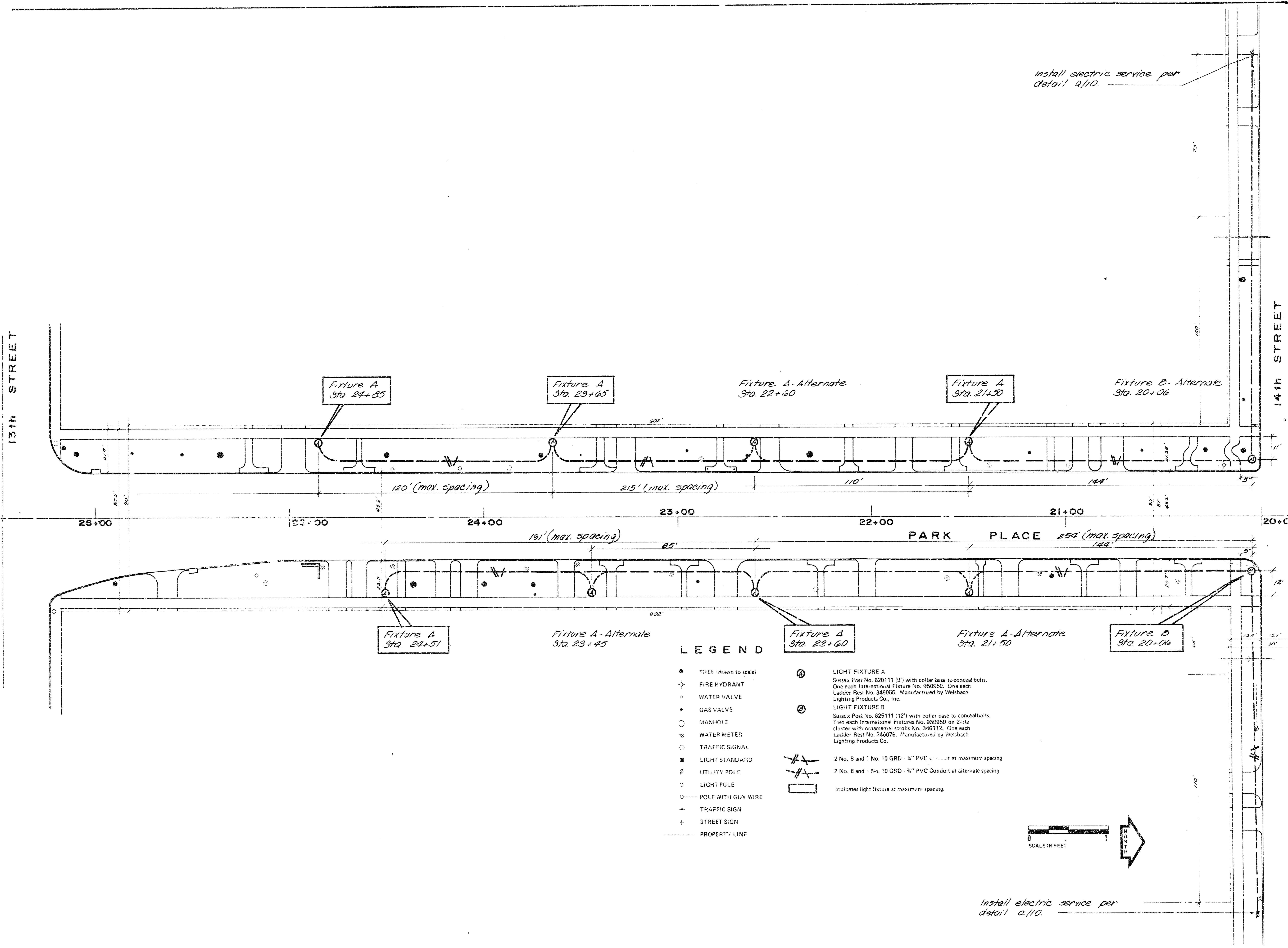
obinger-smith corporation

Designed by TOM MONTGOMERY
Engineer MARTHA GLOVER
Checked by

Project
PEDESTRIAN LIGHTING IMPROVEMENTS
DOWNTOWN AREA
WY. 17th, KANSAS
SEPTEMBER 10, 1978

Sheet Title
LIGHTING PLAN
FAIRVIEW AVENUE
1700 BLOCK

Sheet
59
110

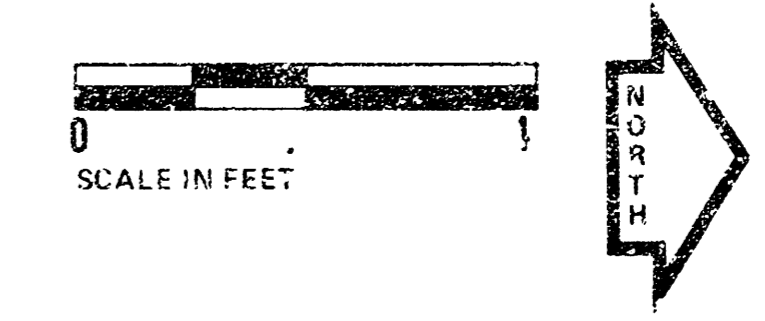



Install electric service per detail a/10.

Install electric service per detail a/10.

LEGEND

- TREE (drawn to scale)
 - ⊕ FIRE HYDRANT
 - WATER VALVE
 - GAS VALVE
 - MANHOLE
 - ⊕ WATER METER
 - TRAFFIC SIGNAL
 - LIGHT STANDARD
 - ⊕ UTILITY POLE
 - LIGHT POLE
 - POLE WITH GUY WIRE
 - ⊕ TRAFFIC SIGN
 - ⊕ STREET SIGN
 - PROPERTY LINE
- ⊙ LIGHT FIXTURE A
Sussex Post No. 620111 (9') with collar base to conceal bolts.
One each International Fixture No. 950950. One each
Ladder Post No. 346055. Manufactured by Weisbach
Lighting Products Co., Inc.
 - ⊙ LIGHT FIXTURE B
Sussex Post No. 625111 (12') with collar base to conceal bolts.
Two each International Fixtures No. 950950 on 2-lite
cluster with ornamental scrolls No. 346112. One each
Ladder Post No. 346076. Manufactured by Weisbach
Lighting Products Co.
 - 2 No. 8 and 1 No. 10 GRD - 3/4" PVC Conduit at maximum spacing
 - 2 No. 8 and 1 No. 10 GRD - 3/4" PVC Conduit at alternate spacing
 - ⊙ Indicates light fixture at maximum spacing.






**olinger-smith
corporation**

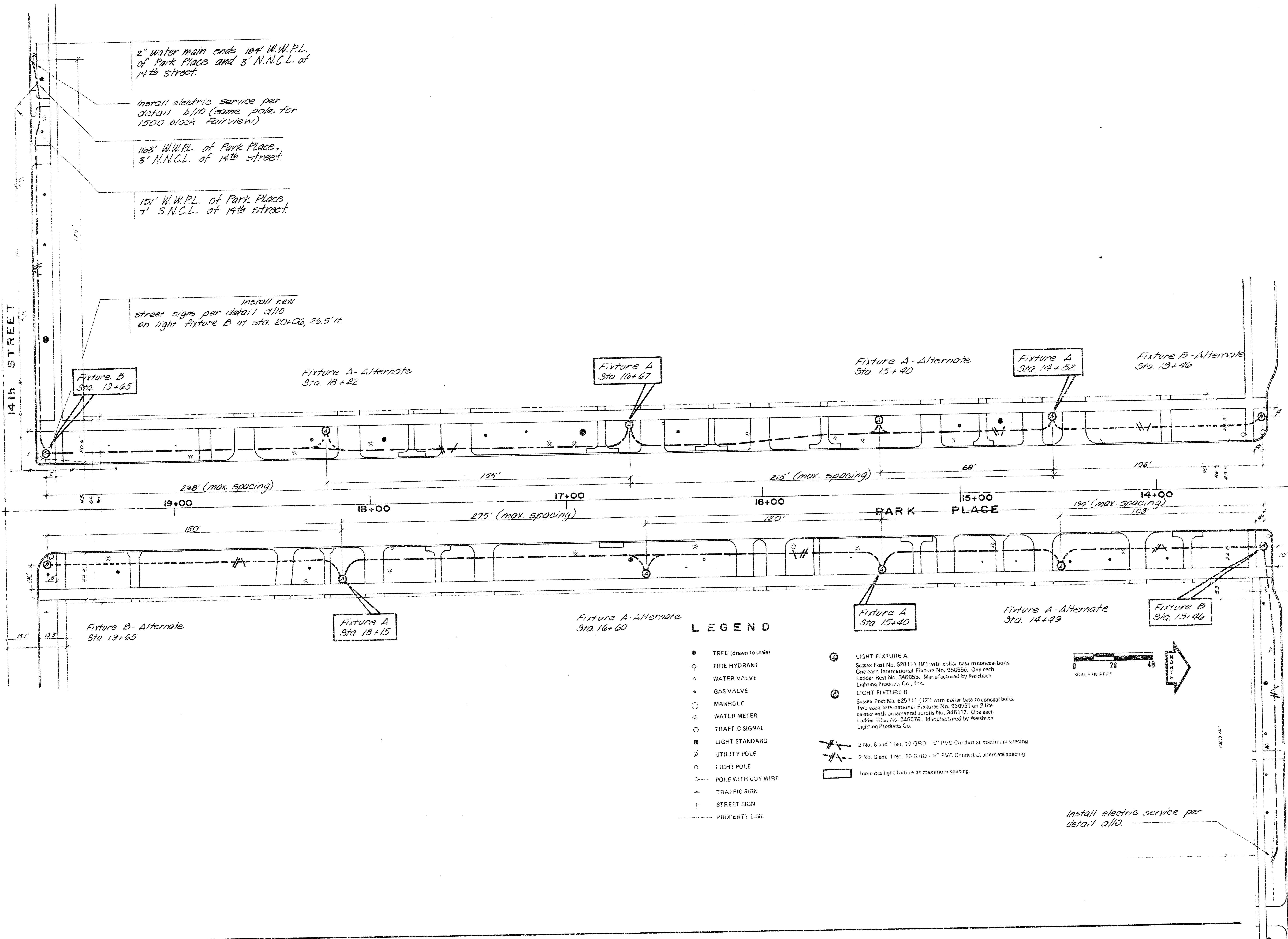
General Office: 1000 North
Broadway, Kansas City, Mo.
Regional Offices: St. Louis, Mo.;
Chicago, Ill.; Denver, Colo.;
Dallas, Tex.; Houston, Tex.;
Los Angeles, Calif.; Miami, Fla.;
New York, N.Y.; Philadelphia, Pa.;
Portland, Ore.; San Francisco, Calif.;
Seattle, Wash.; Wichita, Kan.

Designed by: TOM MCGONIGLEY
Eng. Tech. MARILYN GLOVER
Checked by:

Project: PEDESTRIAN LIGHTING IMPROVEMENTS
DOWNTOWN WICHITA, KANSAS
SEPTEMBER 10, 1976

Sheet Title: LIGHTING PLAN
PARK PLACE
100' BLOCK





2" water main ends 104' W.W.P.L. of Park Place and 3' N.N.C.L. of 14th street.

Install electric service per detail b/10 (same pole for 1500 block Fairview.)

103' W.W.P.L. of Park Place, 3' N.N.C.L. of 14th street.

151' W.W.P.L. of Park Place, 7' S.N.C.L. of 14th street.

Install new street signs per detail a/10 on light fixture B at sta 20+06, 26.5' ft.

Fixture B Sta. 19+65

Fixture A - Alternate Sta. 18+22

Fixture A Sta. 16+67

Fixture A - Alternate Sta. 15+40

Fixture A Sta. 14+52

Fixture B - Alternate Sta. 13+46

Fixture B - Alternate Sta. 19+65

Fixture A Sta. 13+15

Fixture A - Alternate Sta. 16+60

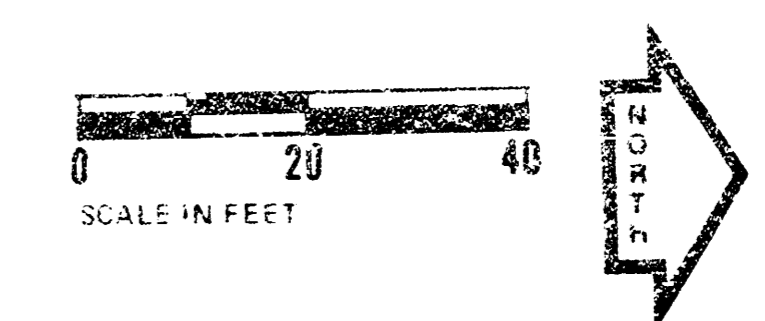
Fixture A Sta. 15+40

Fixture A - Alternate Sta. 14+49

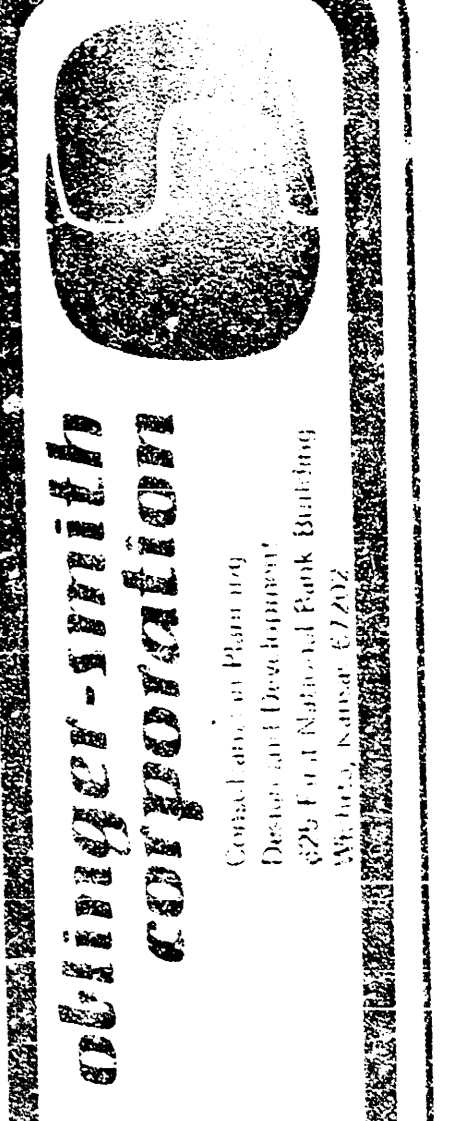
Fixture B Sta. 13+46

LEGEND

- TREE (drawn to scale)
 - ⊕ FIRE HYDRANT
 - WATER VALVE
 - GAS VALVE
 - MANHOLE
 - ⊕ WATER METER
 - TRAFFIC SIGNAL
 - LIGHT STANDARD
 - ⊕ UTILITY POLE
 - LIGHT POLE
 - POLE WITH GUY WIRE
 - ⊕ TRAFFIC SIGN
 - ⊕ STREET SIGN
 - - - PROPERTY LINE
- ① LIGHT FIXTURE A
Sussex Post No. 620111 (19') with collar base to conceal bolts. One each International Fixture No. 950950. One each Ladder Post No. 346055. Manufactured by Weisbach Lighting Products Co., Inc.
 - ② LIGHT FIXTURE B
Sussex Post No. 625111 (12') with collar base to conceal bolts. Two each International Fixture No. 950950 on 2-lite cluster with ornamental scrolls No. 346112. One each Ladder Post No. 346076. Manufactured by Weisbach Lighting Products Co.
 - 2 No. 8 and 1 No. 10 GRD - 1/2" PVC Conduit at maximum spacing
 - 2 No. 8 and 1 No. 10 GRD - 3/4" PVC Conduit at alternate spacing
 - Indicates light fixture at maximum spacing.



Install electric service per detail a/10.



Mullinger-Smith Corporation

1024 East 14th Street, Park Building
Wichita, Kansas 67202

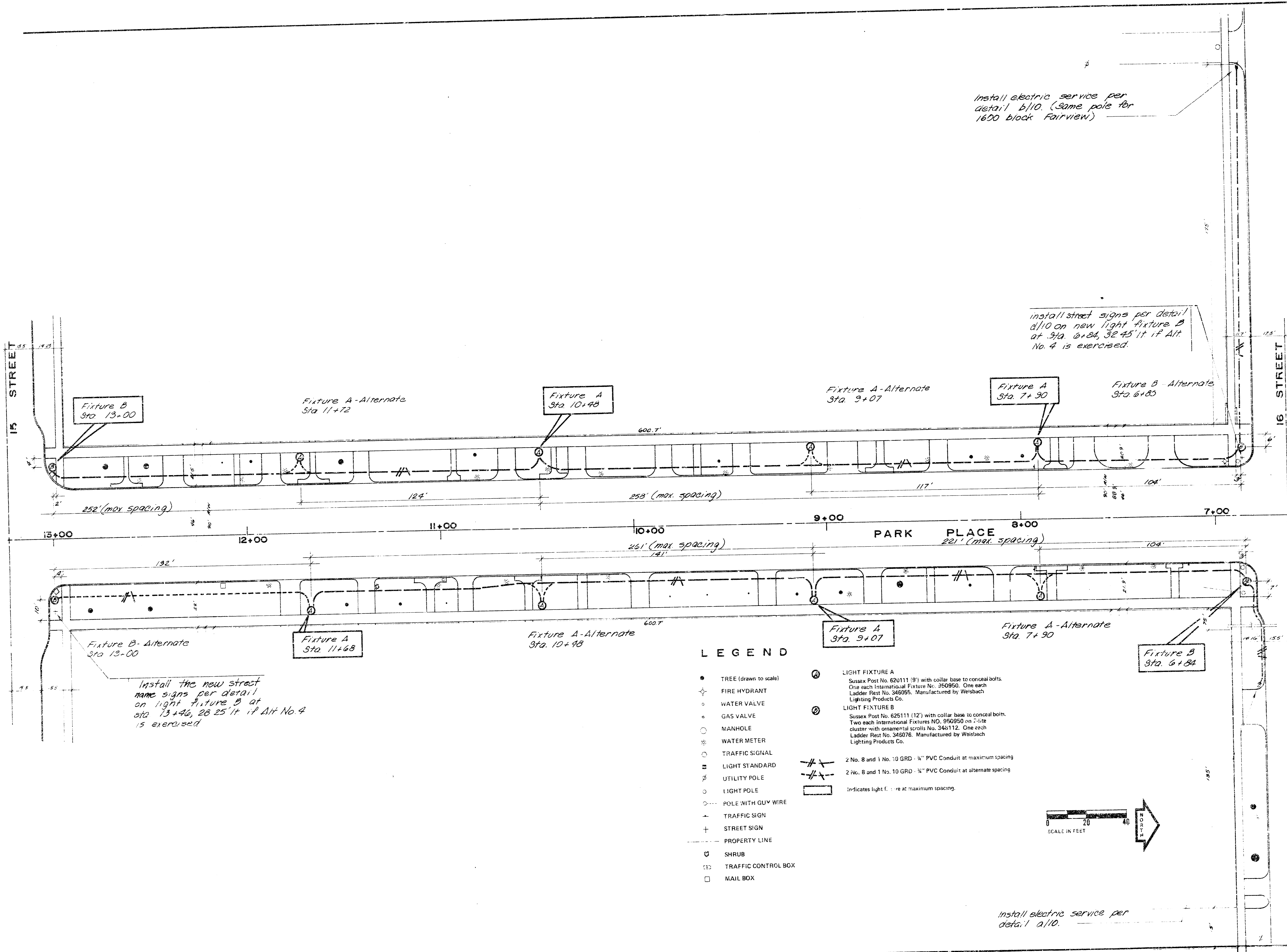
Designed by TOM MOUNTGOMERY
Eng. Tech. MARTHA GLOVER
Checked by

Project
PEDESTRIAN LIGHTING IMPROVEMENTS
DELUCE/STATION AREA
WICHITA, KANSAS
SEPTEMBER 10, 1976

Sheet Title
LIGHTING PLAN
PARK PLACE
1006 BLOCK

Sheet
7
1/10

FILMED FROM THE BEST AVAILABLE COPY.....



Install electric service per detail a/10. (Same pole for 1600 block Fairview)

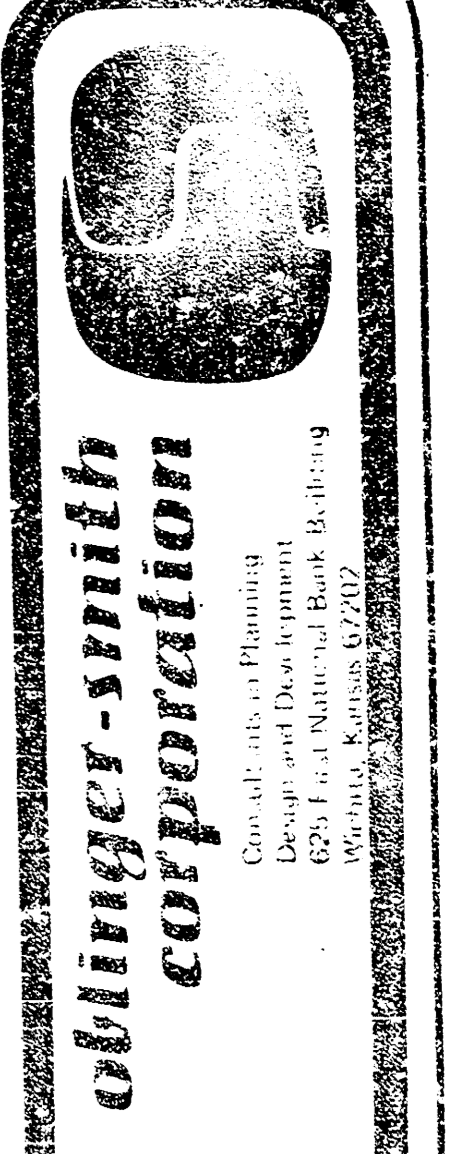
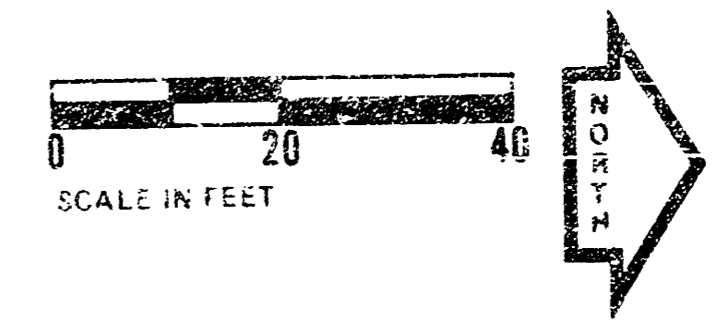
Install street signs per detail d/10 on new light fixture B at Sta. 6+84, 32' 45" if Alt. No. 4 is exercised.

Install the new street name signs per detail on light fixture B at Sta. 13+46, 28' 25" if Alt. No. 4 is exercised.

Install electric service per detail a/10.

LEGEND

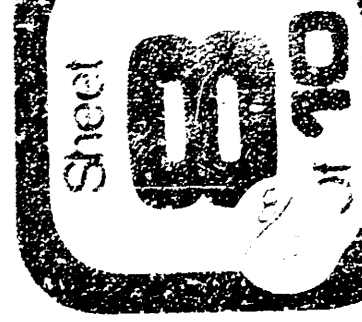
- TREE (drawn to scale)
 - ⊕ FIRE HYDRANT
 - ⊕ WATER VALVE
 - ⊕ GAS VALVE
 - MANHOLE
 - ⊕ WATER METER
 - ⊕ TRAFFIC SIGNAL
 - ⊕ LIGHT STANDARD
 - ⊕ UTILITY POLE
 - LIGHT POLE
 - POLE WITH GUY WIRE
 - ⊕ TRAFFIC SIGN
 - ⊕ STREET SIGN
 - PROPERTY LINE
 - ⊕ SHRUB
 - ⊕ TRAFFIC CONTROL BOX
 - ⊕ MAIL BOX
- ⊕ LIGHT FIXTURE A
Sussex Post No. 620111 (9') with collar base to conceal bolts. One each International Fixture No. 350950. One each Ladder Post No. 346055. Manufactured by Weisbach Lighting Products Co.
 - ⊕ LIGHT FIXTURE B
Sussex Post No. 625111 (12') with collar base to conceal bolts. Two each International Fixtures No. 950950 on 2-lite cluster with ornamental scrolls No. 346112. One each Ladder Post No. 346076. Manufactured by Weisbach Lighting Products Co.
 - 2 No. 8 and 1 No. 10 GRD - 3/4" PVC Conduit at maximum spacing
 - 2 No. 8 and 1 No. 10 GRD - 3/4" PVC Conduit at alternate spacing
 - ⊕ Indicates light fixture at maximum spacing.

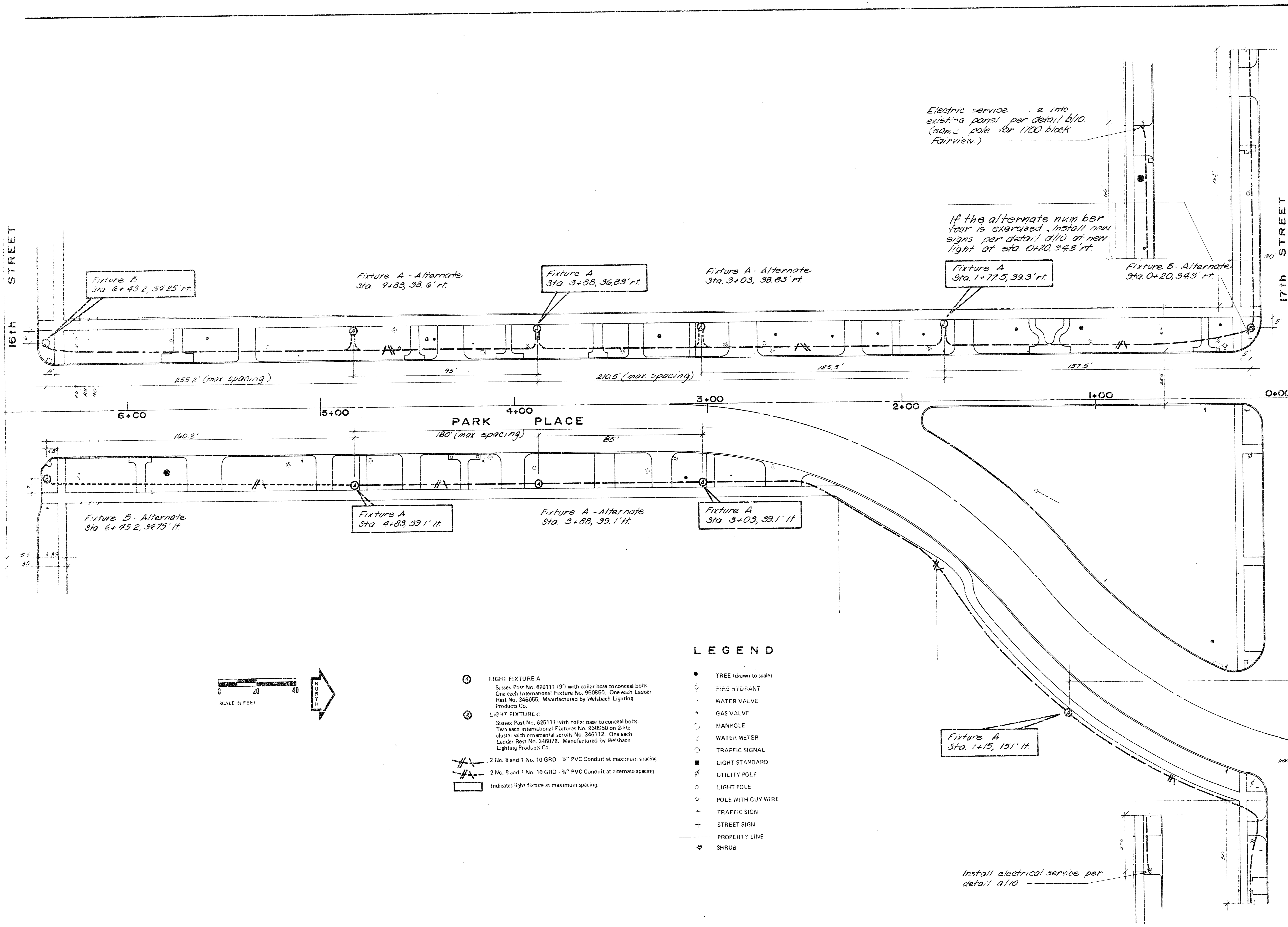


Designed by TOM MURTCOGLIO
 Eng. Tech. MARTHA GLOVER
 Checked by

PROJECT
 PARK PLACE LIGHTING IMPROVEMENTS
 DISTRICT OF COLUMBIA
 WASHINGTON, MARYLAND

Sheet Title
 LIGHTING PLAN
 PARK PLACE
 FOUR BLOCK





Electric service ... into existing panel per detail b/10. (same pole for 1700 block Fairview.)

If the alternate number four is exercised, install new signs per detail d/10 at new light at sta. 0+20, 34.3' rt.

Fixture A Sta. 1+77.5, 39.3' rt.

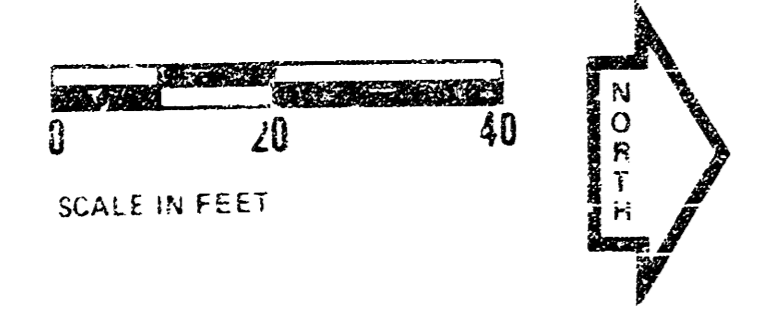
Fixture B - Alternate Sta. 0+20, 34.3' rt.

Fixture A Sta. 1+15, 151' ft.

Install electrical service per detail a/10.

LEGEND

- LIGHT FIXTURE A
Sussex Post No. 620111 (9') with collar base to conceal bolts. One each International Fixture No. 950950. One each Ladder Rest No. 346055. Manufactured by Weisbach Lighting Products Co.
- LIGHT FIXTURE B
Sussex Post No. 625111 with collar base to conceal bolts. Two each International Fixtures No. 950950 on 2-lig cluster with ornamental scrolls No. 346112. One each Ladder Rest No. 346076. Manufactured by Weisbach Lighting Products Co.
- 2 No. 8 and 1 No. 10 GRD - 3/4" PVC Conduit at maximum spacing
- 2 No. 8 and 1 No. 10 GRD - 3/4" PVC Conduit at alternate spacing
- Indicates light fixture at maximum spacing.
- TREE (drawn to scale)
- ⊕ FIRE HYDRANT
- ⊙ WATER VALVE
- ⊕ GAS VALVE
- MANHOLE
- ⊕ WATER METER
- ⊕ TRAFFIC SIGNAL
- LIGHT STANDARD
- ⊕ UTILITY POLE
- LIGHT POLE
- POLE WITH GUY WIRE
- ⊕ TRAFFIC SIGN
- ⊕ STREET SIGN
- PROPERTY LINE
- ⊕ SHRUB



oblinger-smith corporation

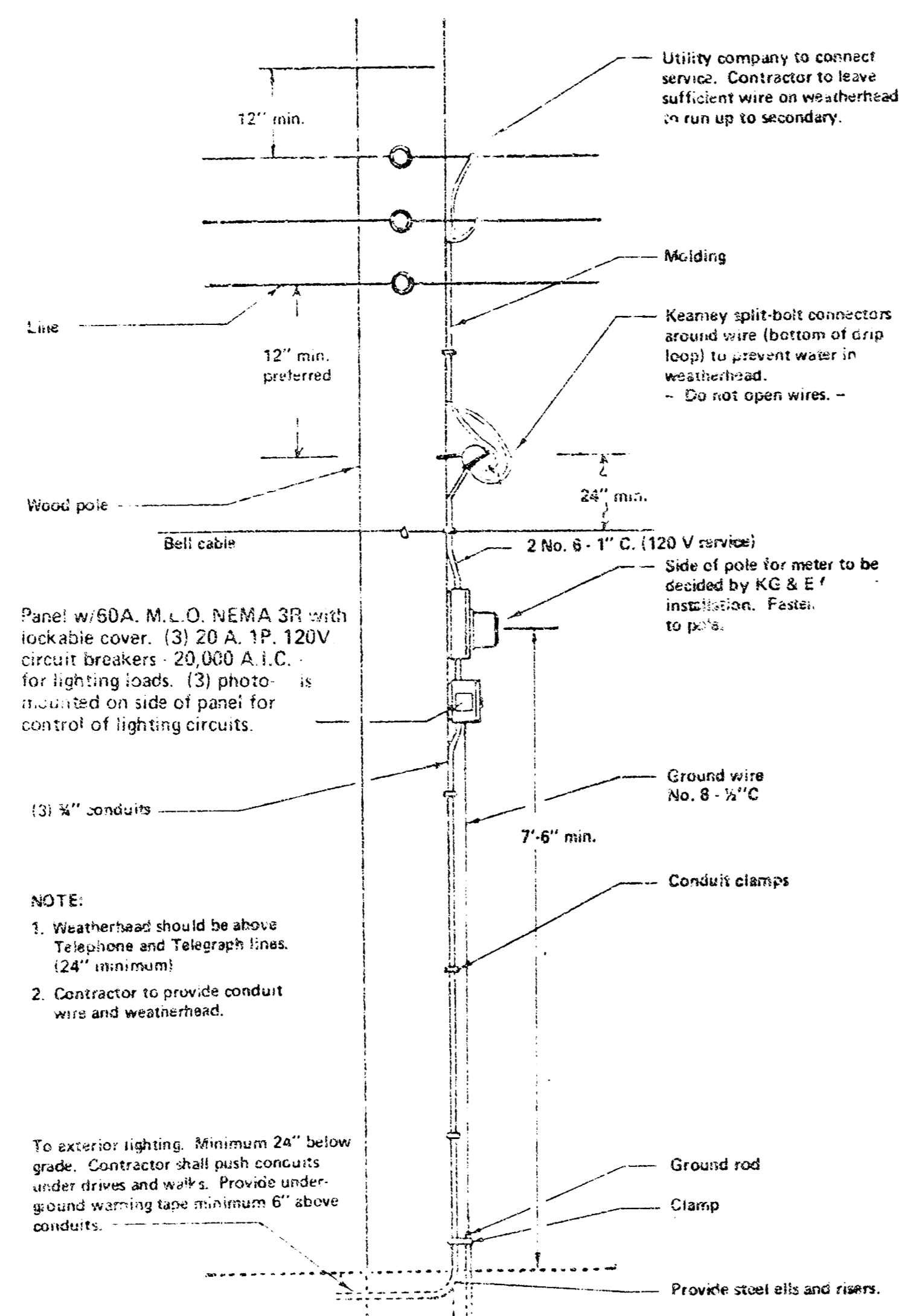
Consultants in Lighting
1234 First National Bldg., Lighting
Wichita, Kansas 67202

Designed by TOM MONTGOMERY
Engr. Tech. MARTHA GLOVER
Checked by _____

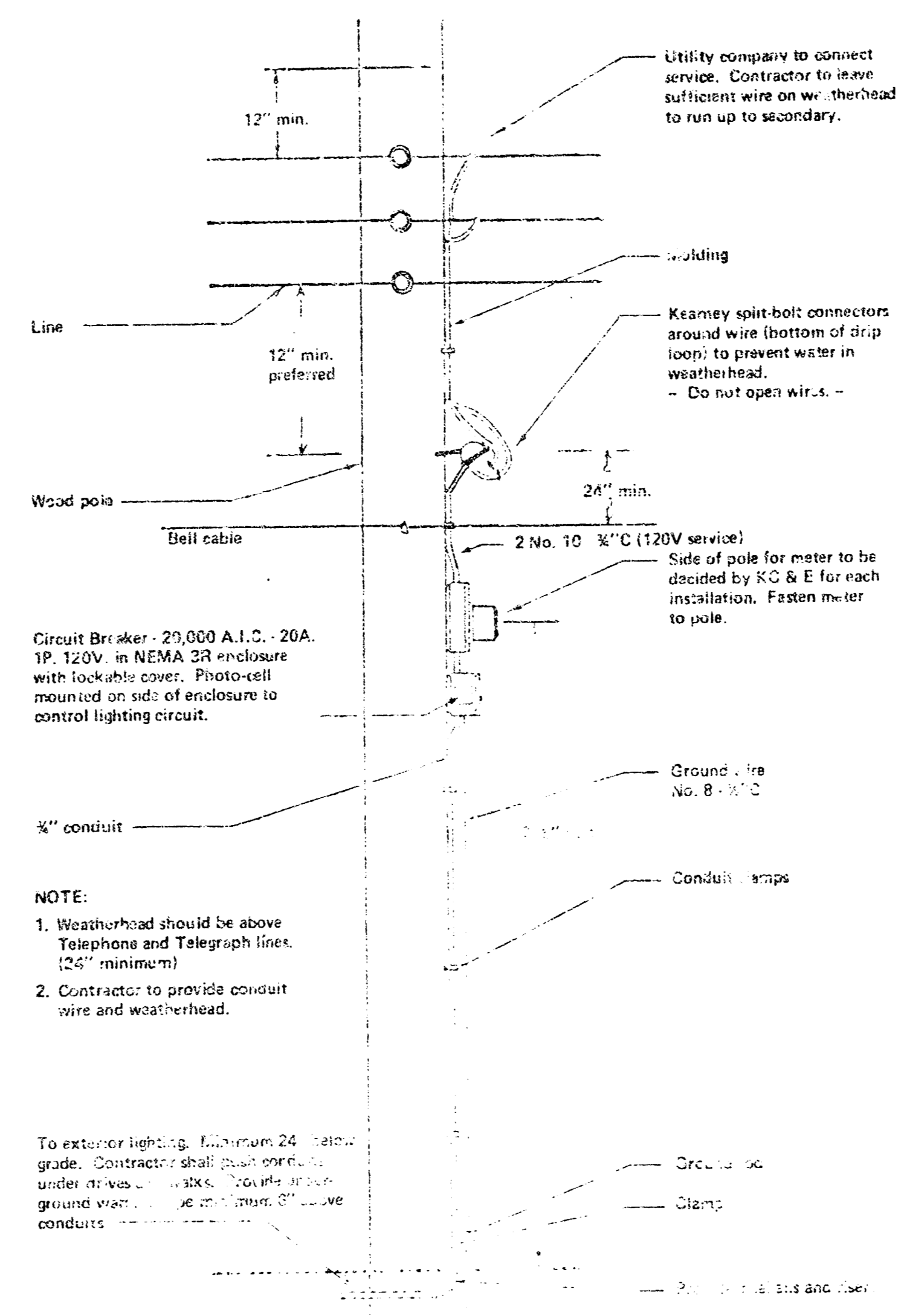
Project
PEDESTRIAN LIGHTING IMPROVEMENTS
ADMINISTRATION AREA
WICHITA, KANSAS
SEPTEMBER 10, 1976

Sheet Title
LIGHTING PLAN
PARK PLACE
1700 BLOCK

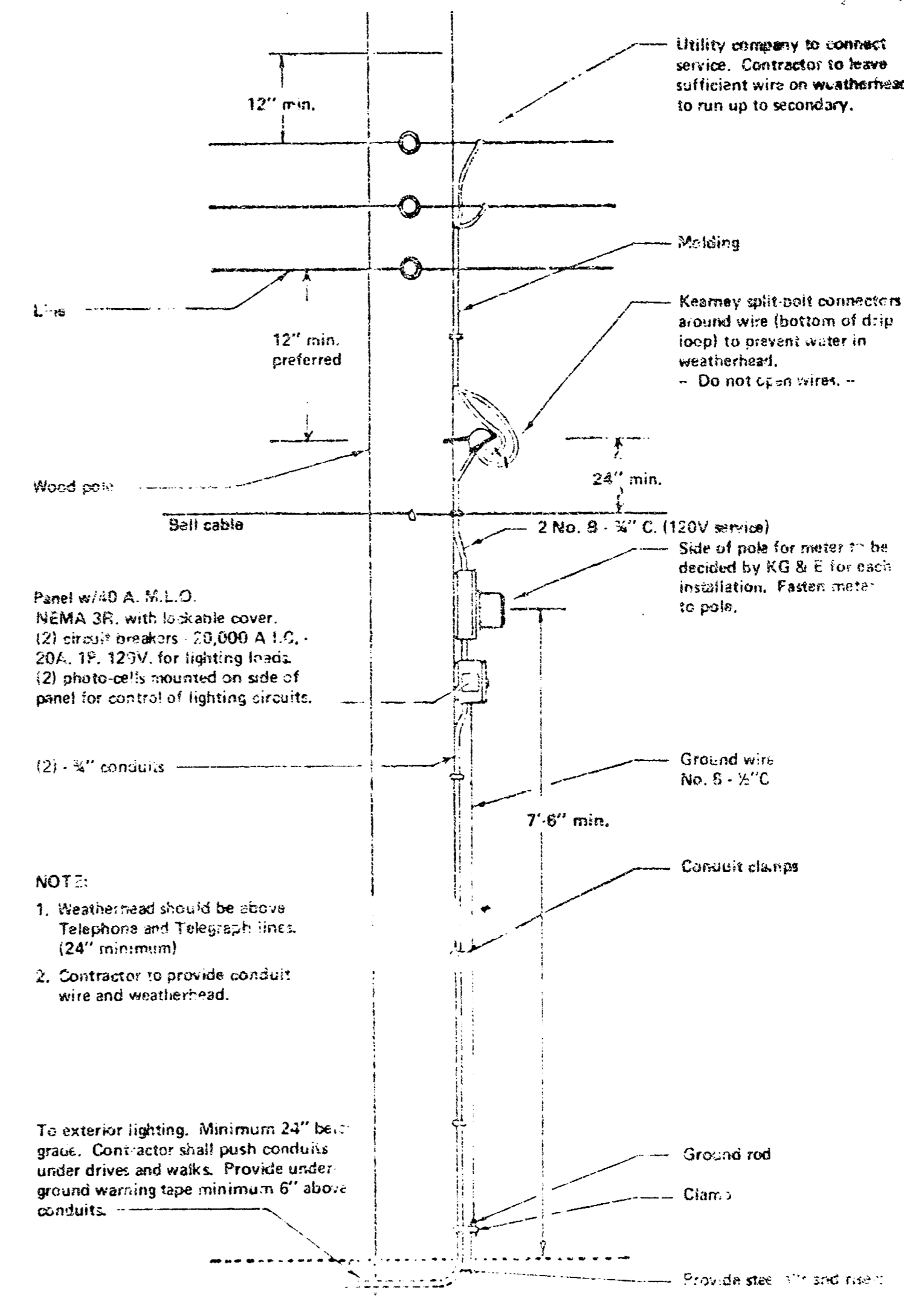
Sheet
9/10



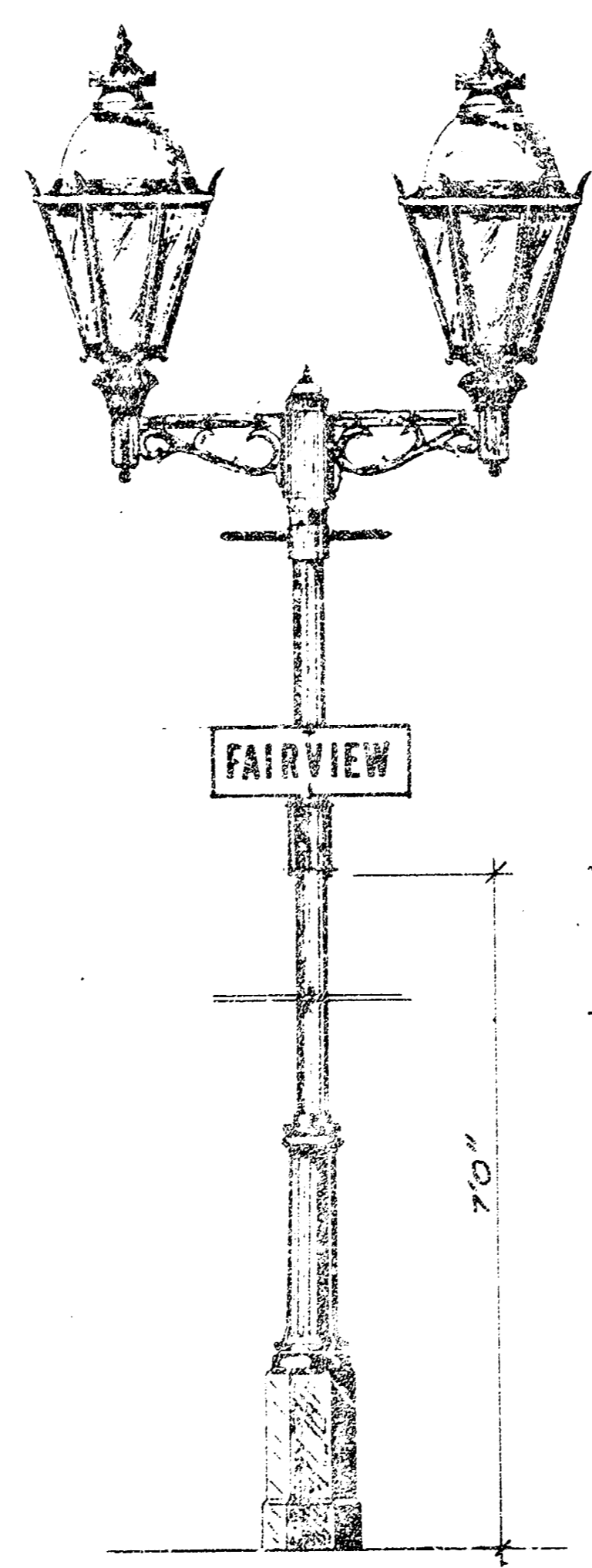
c ELECTRIC SERVICE INSTALLATION DETAIL C
NO SCALE



a ELECTRIC SERVICE INSTALLATION DETAIL A
NO SCALE

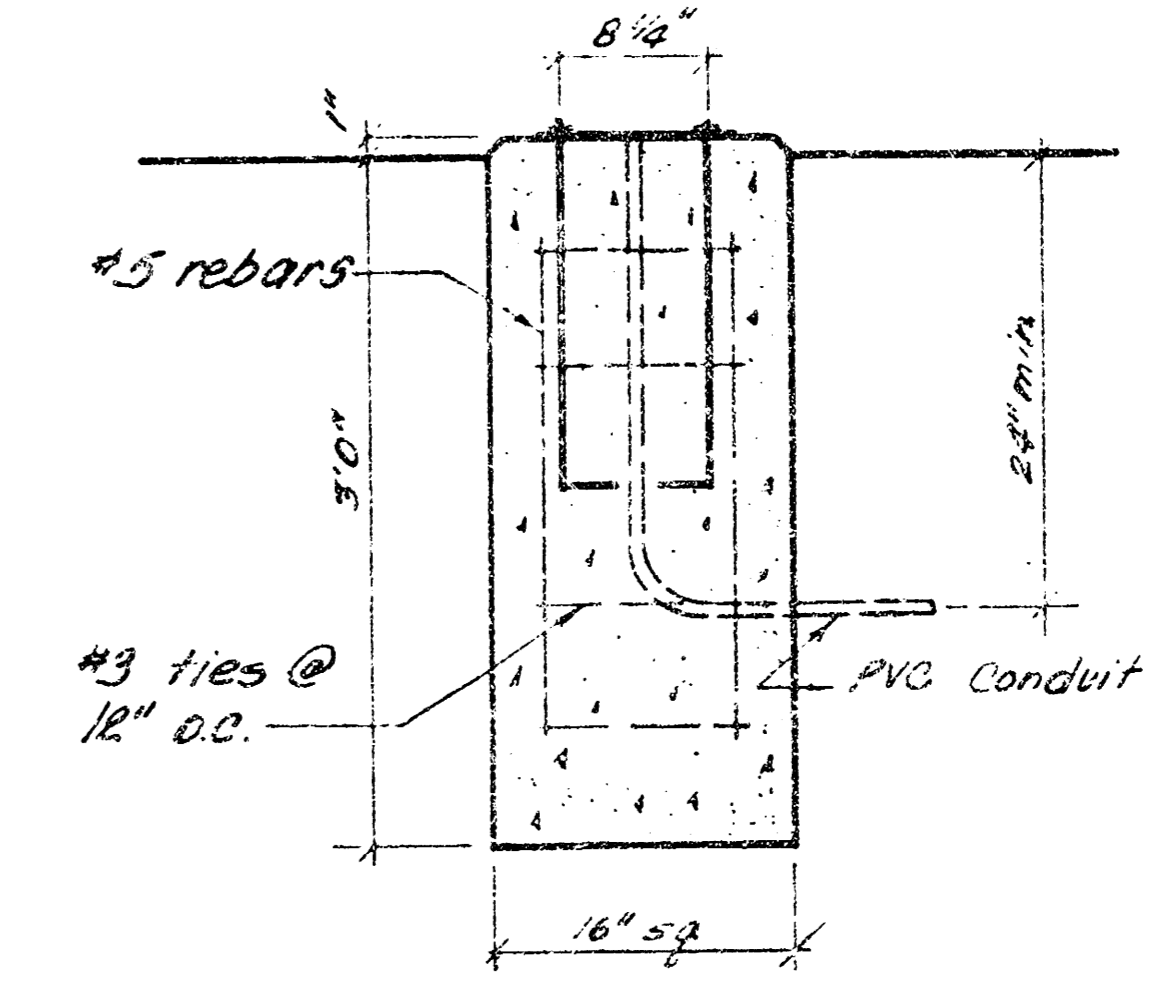
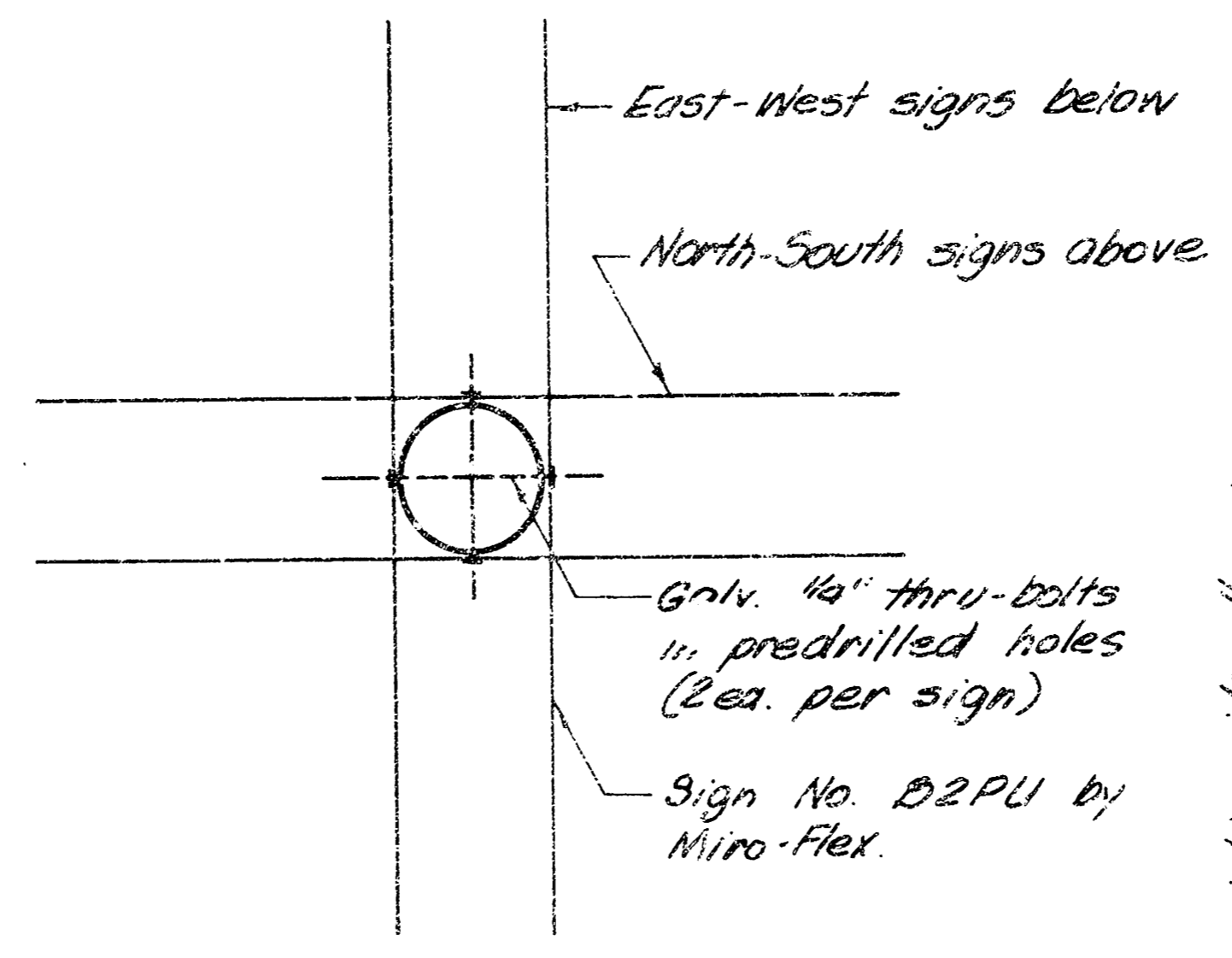


b ELECTRIC SERVICE INSTALLATION DETAIL B
NO SCALE

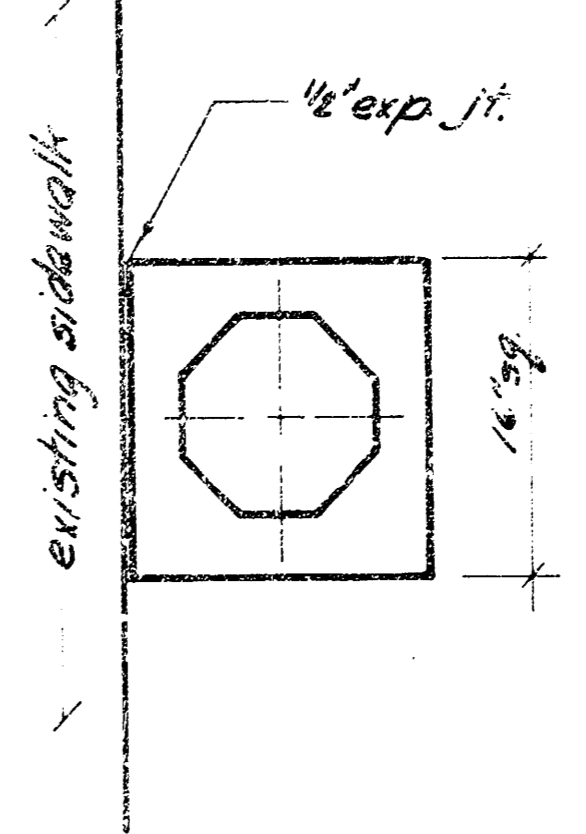


d STREET SIGN MOUNTING DETAIL
NO SCALE

NOTE:
Street signs to be two pair at each location. Signs to be embossed from sturdy 18-gauge, Bonderized steel with 4\"/>



10 LIGHT POLE BASE
SCALE 1" = 1' 0"



e TYPICAL LIGHT POLE LOCATION
SCALE 1" = 1' 0"

NOTE:
Light Fixture locations at corners are as noted on the drawings for each location.

Obinger-Smith Corporation
 Consulting Engineers and Planners
 Design and Development
 625 First National Bank Building
 Wichita, Kansas 67202
 Project: PEDESTRIAN LIGHTING IMPROVEMENTS
 CITY OF WICHITA, KANSAS
 SEPTEMBER 10, 1978
 Checked by: [Signature]
 Sheet Title: DETAILS
 Sheet No. 19 of 19