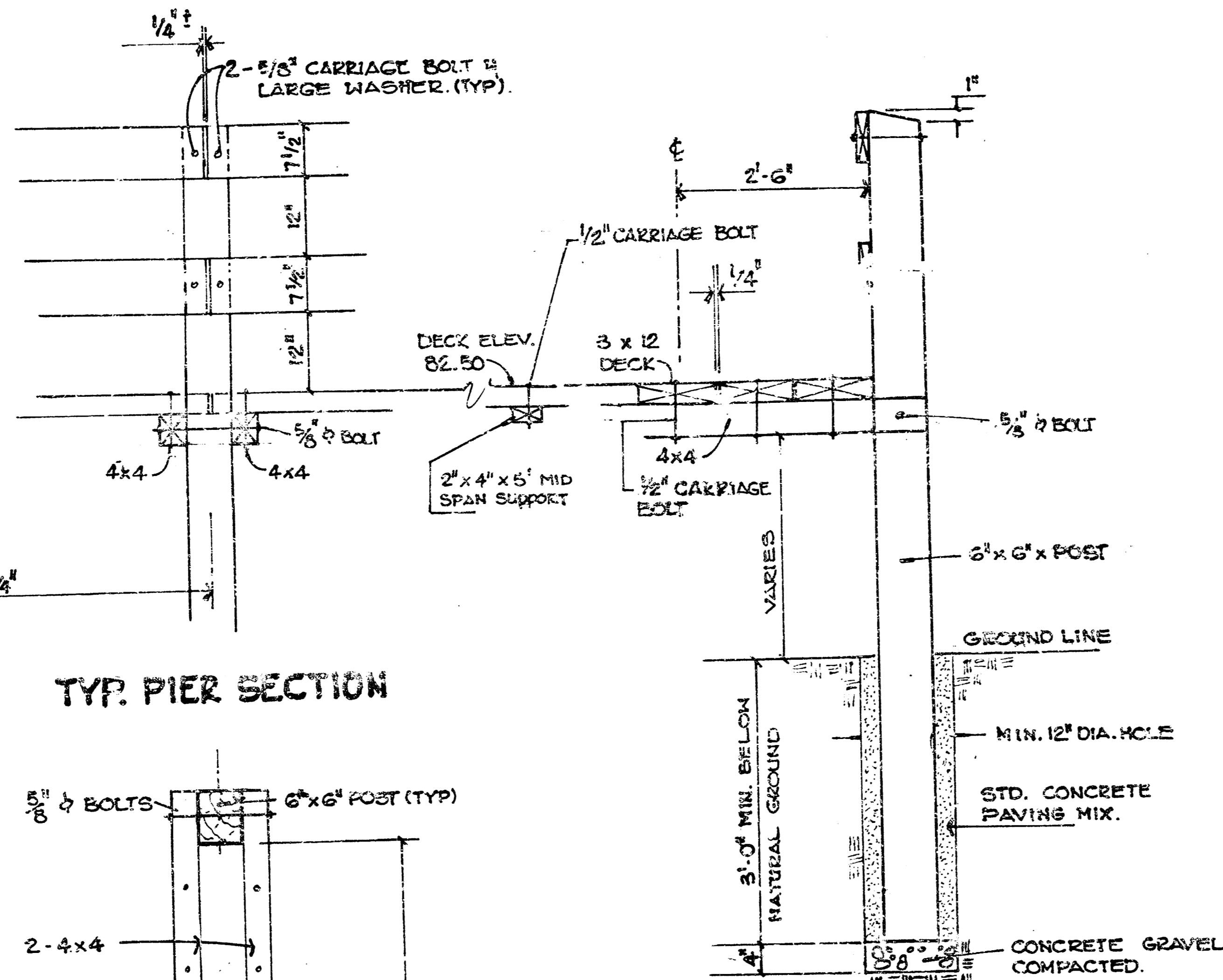
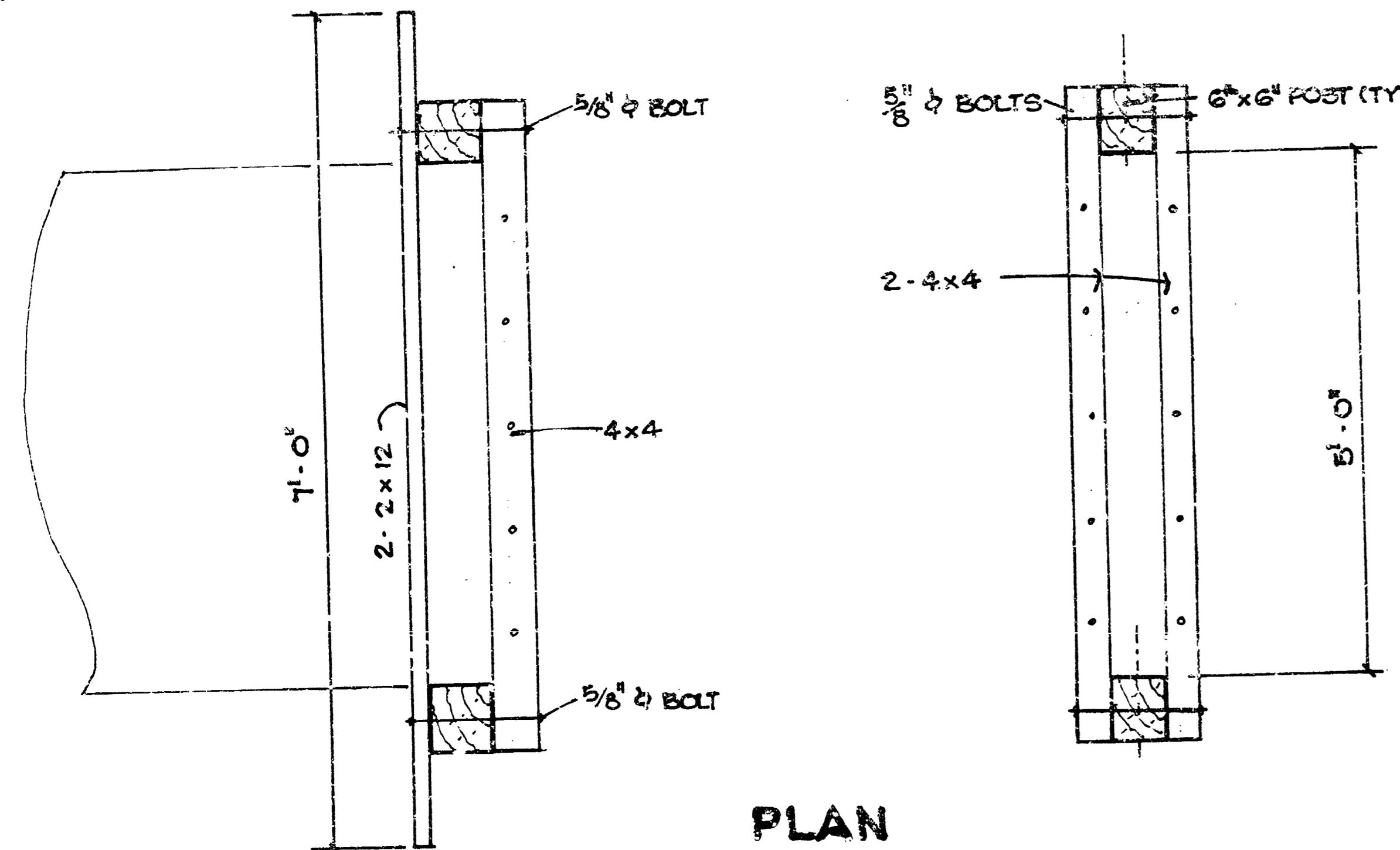


TYP. ABUTMENT SECTION

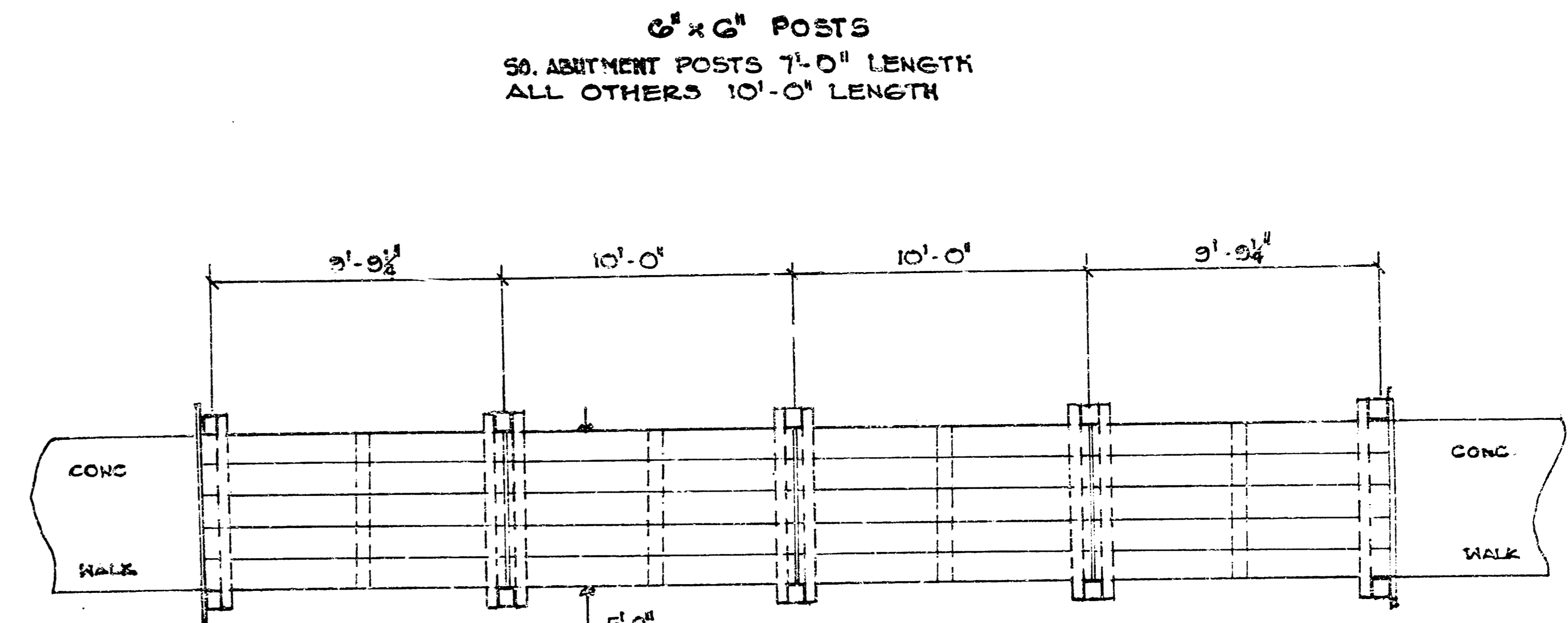


TYP. PIER SECTION

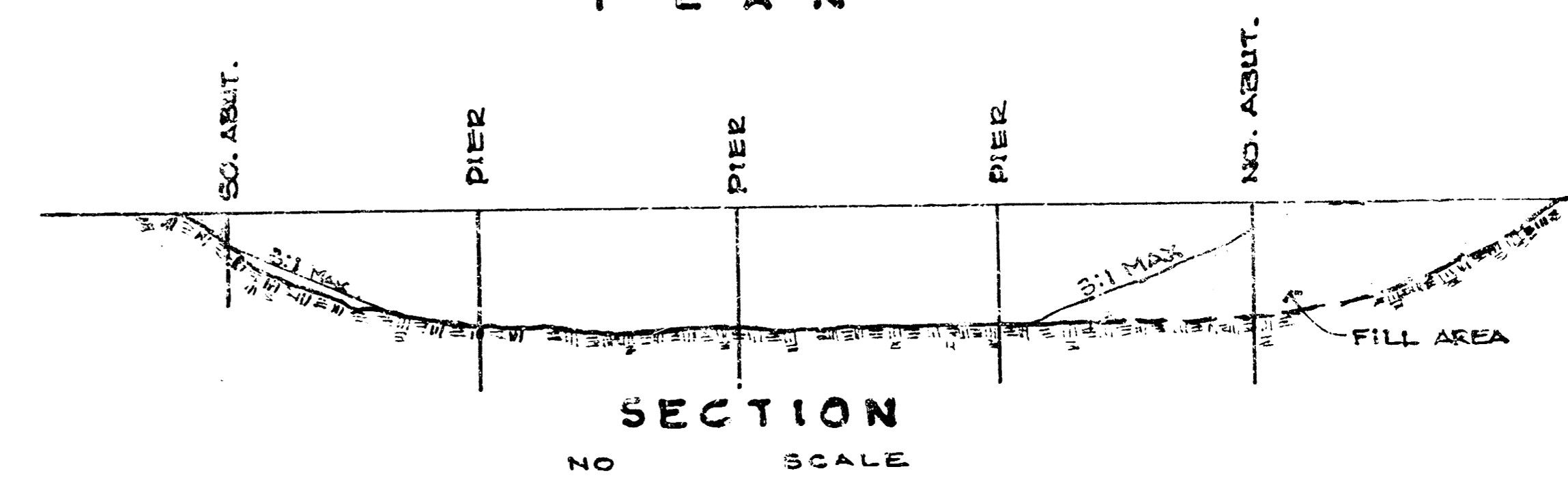
ELEVATION



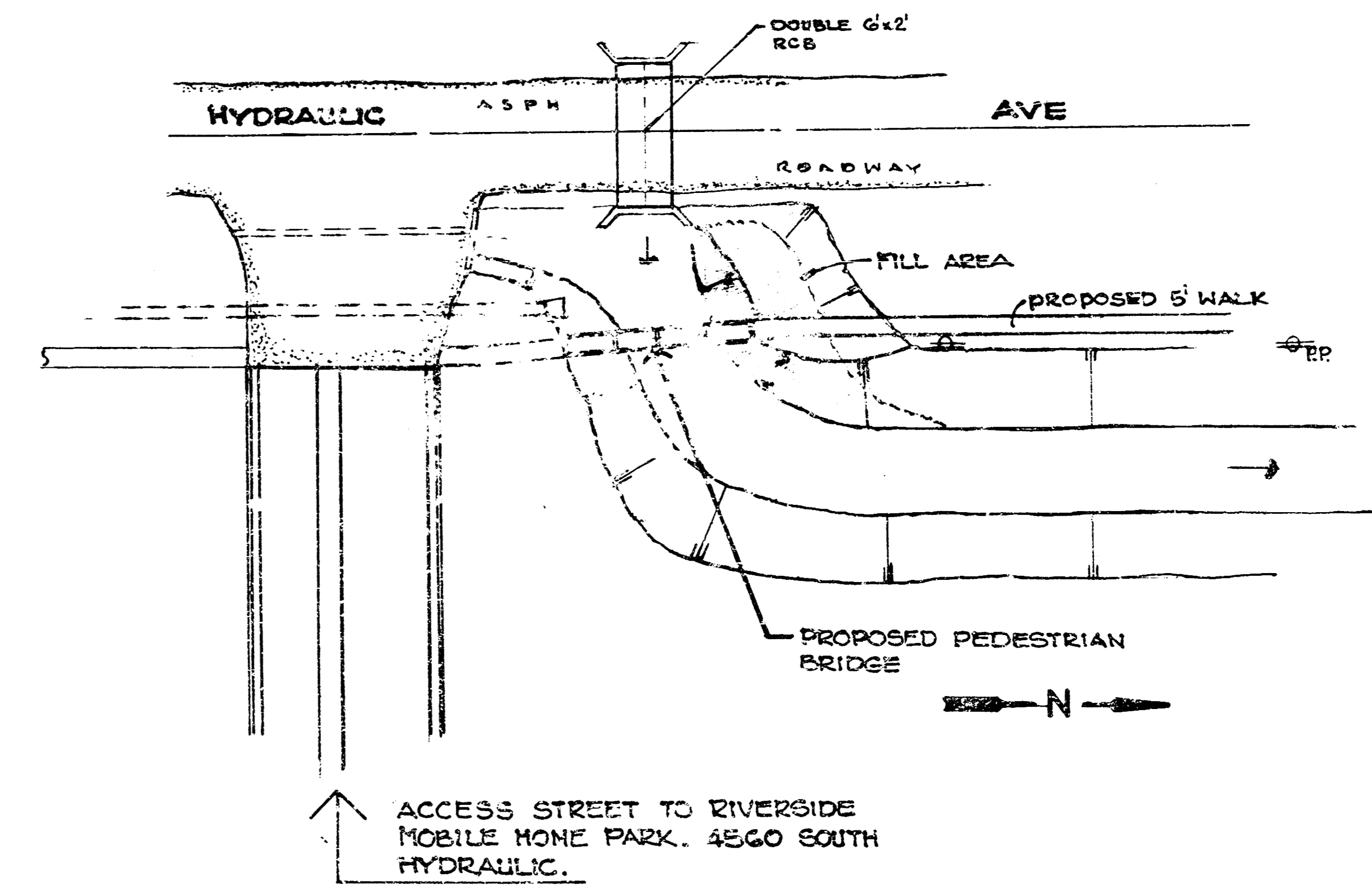
PLAN



PLAN



SECTION



- GENERAL NOTES**
1. TIMBERS TO BE SOUTHERN YELLOW PINE OR APPROVED EQUAL. .40 CCA TREATED AND SURFACED TIMBERS.
 2. ALL GRASSED AREAS DISTURBED BY THE CONSTRUCTION IMPROVEMENTS UNDER THIS CONTRACT SHALL BE REPLANTED WITH REBEL II FESCUE GRASS SEED AT AN APPLICATION RATE OF 10 LBS / 1000 S.F. FERTILIZER SHALL BE 16-20-6 APPLIED AT A RATE OF 10 LBS / 1000 SQ.FT.
 3. THE CONTRACTOR SHALL CONTACT THE NECESSARY UTILITY COMPANIES FOR ANY UNDERGROUND LINE LOCATIONS IN THE FIELD PRIOR TO CONSTRUCTION OF PEDESTRIAN BRIDGE.
 4. ALL BOLTS, NUTS & WASHERS ARE TO BE GALVANIZED.
 5. EXACT HORIZONTAL ALIGNMENT OF PEDESTRIAN BRIDGE SHALL BE DETERMINED AT THE TIME OF CONSTRUCTION BY THE ENGINEER. PEDESTRIAN BRIDGE CONSTRUCTION WILL REQUIRE CONSTRUCTION OF EARTH FILL ON THE NORTH SIDE OF THE CHANNEL CROSSING AT THE NORTH END OF THE BRIDGE. ELEVATIONS SHOWN FOR BRIDGE ARE BASED ON THE FLOWLINE ELEVATION OF THE ADJACENT DOUBLE 6'x2' R.C.B. IDENTIFIED AT A ELEVATION OF 78.63.

PEDESTRIAN FOOT BRIDGE ON THE EAST SIDE OF HYDRAULIC AVE 3,000' NORTH OF 47TH ST. SO. INDEX CODE 705053

PROJECT DESCRIPTION
DETAILS
 PEDESTRIAN BRIDGE
 PROJECT NUMBER
 472-76-245-81946-000-000-001/1

FILMED FROM THE BEST AVAILABLE COPY