

SHEET NO.	TOTAL SHEETS
1	3

CITY OF WICHITA, KANSAS

MICHAEL E. LINDEBAK, P.E., CITY ENGINEER

STREET IMPROVEMENTS

DECEL LANE ON THE EAST SIDE OF ARMOUR DRIVE SERVING LOT 2

IN

ROCKWOOD SOUTH THIRD ADDITION

CITY OF WICHITA PROJECT NO. 472-76-245-81897-000-000-001

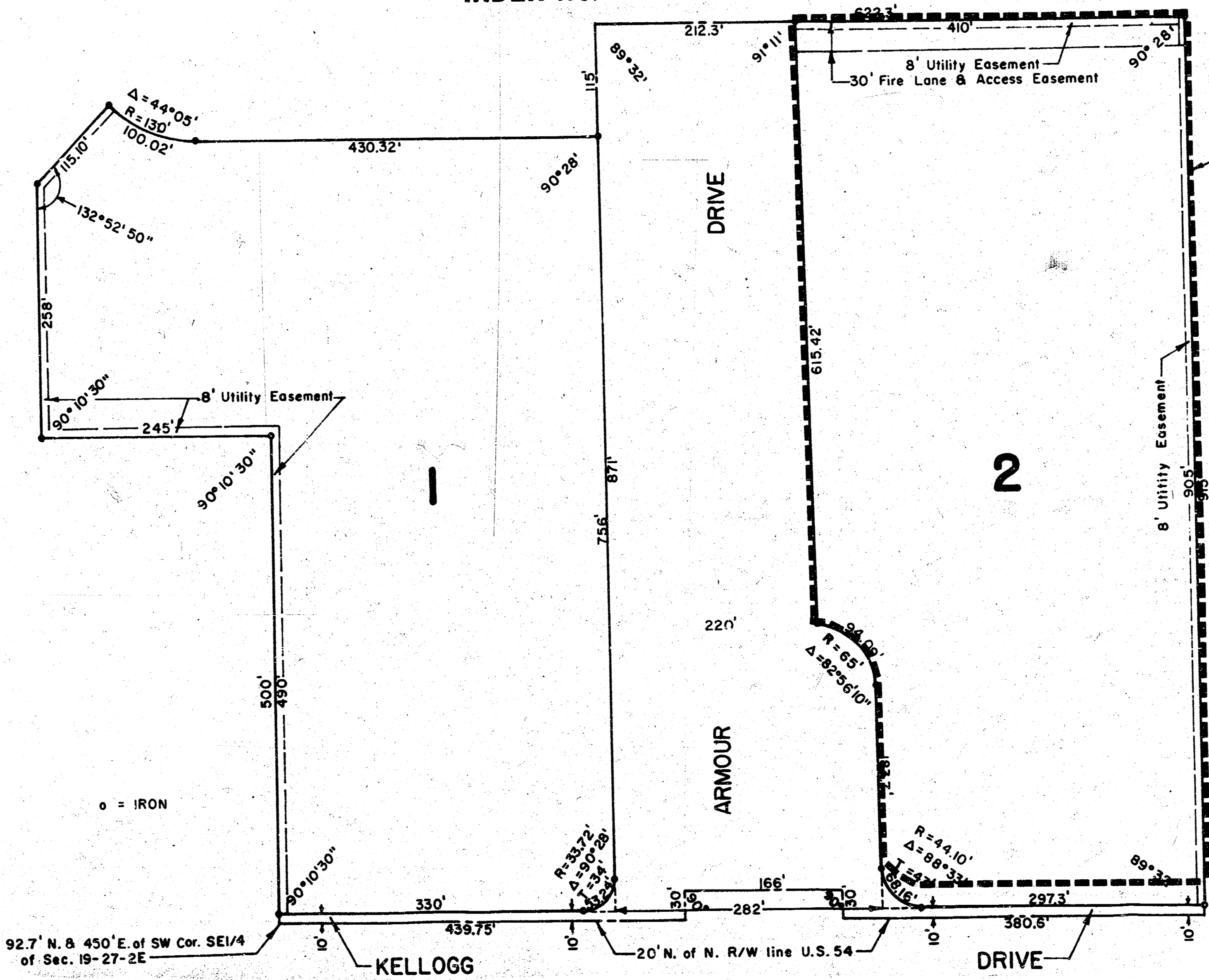
INDEX NO. 608018

INDEX OF SHEETS

1. TITLE SHEET
2. PLAN AND DETAILS
3. CROSS-SECTIONS

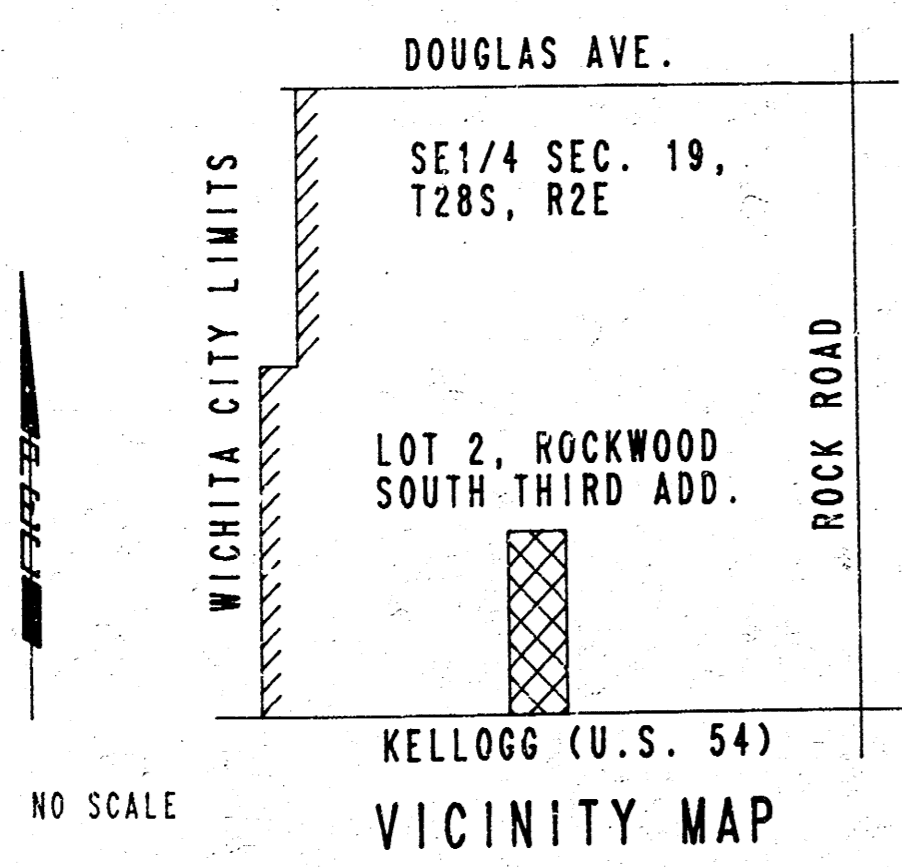
PROJECT SURVEY CONTROL

- DATUM BENCH MARK: BRASS CAP AT N.E. CORNER RCBC AT ARMOUR AND DOUGLAS ELEV. +167.53
- BENCH MARK NO. 1: CHIS. "O" TOP WINGWALL AT N.E. CORNER RCBC AT DRAINAGE CHANNEL WEST SIDE OF ARMOUR 385'± NORTH OF & KELLOGG ELEV. +154.51
- BENCH MARK NO. 2: N.W. CORNER CONC. SECTION OF SIDEWALK ON WEST SIDE OF VILLAGE FASHION CENTER EAST OF ENTRANCE FROM ARMOUR AT P.I. IN CURB S.W. APPROX. STA. 12+50. RT. (EAST SIDE OF PARKING LOT) ELEV. +156.51



GENERAL NOTES

- INTERURBAN TRAFFIC GENERATED OUTSIDE THE PROJECT AREA AND LOCAL BUSINESS OR APARTMENT TRAFFIC GENERATED WITHIN THE PROJECT AREA ARE TO BE CARRIED THROUGH CONSTRUCTION.
- UTILITY SERVICE LINES, POLES, VALVE BOXES, METERS, AND ET CETERA ARE TO BE ADJUSTED AS NECESSARY BY OTHERS PRIOR TO CONSTRUCTION UNLESS THE PLANS SPECIFICALLY CALL FOR THEIR ADJUSTMENT BY THE CONTRACTOR OR UNLESS THE PLANS SPECIFICALLY IDENTIFY A UTILITY TO BE ADJUSTED BY ITS OWNER DURING CONSTRUCTION. EXISTING UTILITIES AND THEIR LOCATION, AS SHOWN ON THE PLANS, REPRESENT THE BEST INFORMATION OBTAINABLE FOR DESIGN. THE CONTRACTOR WILL BE REQUIRED TO WORK AROUND EXISTING UTILITIES WITHIN THE RIGHT-OF-WAY WHICH DO NOT CONFLICT WITH PROPOSED CONSTRUCTION.
- WHERE NECESSARY, SAW CUT OF AT LEAST ONE-HALF THE DEPTH OF EXISTING SURFACE COURSES SHALL BE PROVIDED AT LOCATIONS WHERE PROPOSED CONSTRUCTION ADJUTS AN EXISTING SURFACE COURSE OR PAVEMENT FOR WHICH PARTIAL REMOVAL OF THAT SURFACE OF PAVEMENT IS REQUIRED. SUCH SAW CUTS AND SURFACE COURSE REMOVAL WILL NOT BE PAID FOR DIRECTLY AND THIS COST SHALL BE CONSIDERED AS SUBSIDIARY TO OTHER ITEMS.
- RUBBLE FROM THE REMOVAL OF MISCELLANEOUS STRUCTURES AND EXCESS EXCAVATION WHICH IS TO BE WASTED SHALL BE DISPOSED OF ON SITES TO BE PROVIDED BY THE CONTRACTOR. THESE SITES SHALL BE APPROVED BY THE ENGINEER AS TO SUITABILITY, APPEARANCE AND SITE LOCATION. LOCATIONS THAT, IN THE OPINION OF THE ENGINEER, WILL LEAVE AN UNSIGHTLY APPEARANCE WILL NOT BE APPROVED.
- PROPERTIES WITHIN THE PROJECT LIMITS MAY HAVE UNDERGROUND SPRINKLER SYSTEMS, FLAGPOLES, OR OTHER PRIVATE IMPROVEMENTS IN PUBLIC RIGHT-OF-WAY WHICH CONFLICT WITH NEW CONSTRUCTION. CONTRACTOR WILL BE REQUIRED TO REMOVE SUCH IMPROVEMENTS SHOULD THEY NOT BE REMOVED BY THEIR OWNER AT THE TIME OF CONSTRUCTION OF THE PROJECT. THE CONTRACTOR WILL BE REQUIRED TO SALVAGE ALL SPRINKLER HEADS AND/OR VALVES, FLAGPOLE MATERIALS, ETC. AND GIVE SUCH MATERIAL TO THEIR OWNER. PORTIONS OF PRIVATE IMPROVEMENTS NOT IN CONFLICT WITH NEW CONSTRUCTION SHALL BE PROTECTED FROM DAMAGE AND SHALL REMAIN IN PLACE. ALL WORK IN CONNECTION WITH UNDERGROUND SPRINKLER SYSTEMS OR OTHER PRIVATE IMPROVEMENTS SHALL BE CONSIDERED AS SUBSIDIARY TO THE CONTRACT PAY ITEMS OF WORK.
- TREES AND SHRUBS IN PUBLIC RIGHT-OF-WAY WHICH ARE IN DIRECT CONFLICT WITH PROPOSED NEW CONSTRUCTION SHALL BE REMOVED BY THE CONTRACTOR WITH THE ENGINEER'S APPROVAL. TREES AND SHRUBS WHICH ARE NOT IN DIRECT CONFLICT WITH PROPOSED NEW CONSTRUCTION SHALL BE SAVED AND PROTECTED FROM DAMAGE.
- THE CONTRACTOR WILL BE PERMITTED TO BID ONLY ONE OF THE ALTERNATE TYPES OF SUBGRADE TREATMENT. THE TYPE BID BY THE SUCCESSFUL BIDDER WILL BE THE TYPE OF SUBGRADE TREATMENT USED TO CONSTRUCT THE PROJECT.
- THE CONTRACTOR SHALL BE RESPONSIBLE FOR PRESERVING PROPERTY IRONS. THE CONTRACTOR WILL BE REQUIRED TO RE-ESTABLISH ANY PROPERTY IRONS WHICH ARE DAMAGED OR DESTROYED BY HIS CONSTRUCTION OPERATIONS. SUCH IRONS SHALL BE RE-ESTABLISHED BY A LICENSED LAND SURVEYOR IN ACCORDANCE WITH STATE LAWS.
- THE CONTRACTOR SHALL CAREFULLY REMOVE EXISTING TRAFFIC CONTROL SIGNS AND STOCKPILE THEM WITHIN THE RIGHT-OF-WAY. RESETTING OR REPLACEMENT OF SIGNS WILL BE PERFORMED BY THE CITY OF WICHITA.
- REMOVAL OF EXISTING CONCRETE PARKING LOT PAVEMENTS, CONCRETE PARKING LOT CURBS, AND CONCRETE PARKING LOT MEDIANS WILL BE PAID FOR AS SQUARE FEET OF CONCRETE SIDEWALK AND/OR DRIVEWAY PAVEMENT REMOVED.
- CONSTRUCTION OF CONCRETE PARKING LOT PAVEMENT WILL BE INCLUDED IN THE QUANTITY FOR 7" REINFORCED CONCRETE PAVEMENT.
- THE CONTRACTOR SHALL GIVE ALL PROPERTY OWNERS AND/OR TENANTS OF DEVELOPED PROPERTY ADJUTING THE PROJECT LIMITS A MINIMUM OF TEN (10) DAYS ADVANCE NOTICE PRIOR TO START OF CONSTRUCTION.
- CONTRACTOR SHALL SATISFY HIMSELF OF SUBSURFACE CONDITIONS PRIOR TO CONSTRUCTION.
- CONTRACTOR WILL BE REQUIRED TO PROVIDE A MINIMUM ADVANCE NOTICE OF TWENTY-FOUR (24) HOURS TO UTILITY COMPANIES PRIOR TO STARTING ANY EXCAVATION AS FOLLOWS:
- SOUTHWESTERN BELL TELEPHONE CO. 1-316-571-2611
 - KPL GAS SERVICE 263-7511
 - KANSAS GAS & ELECTRIC 264-1141
 - CITY OF WICHITA WATER DEPARTMENT 268-4908
 - CITY OF WICHITA SEWER DEPARTMENT 268-4071
- THE WATER DEPARTMENT SHALL FIELD LOCATE WATER VALVES ONE TIME DURING CONSTRUCTION WHEN REQUESTED BY THE CONTRACTOR. IT SHALL BE THE CONTRACTOR'S RESPONSIBILITY TO PRESERVE SUCH FIELD LOCATIONS DURING THE CONSTRUCTION PROCESS. WATER VALVES, WATER VALVE BOXES OR FIRE HYDRANTS DAMAGED DURING CONSTRUCTION SHALL BE REPAIRED BY THE CONTRACTOR AT HIS OWN EXPENSE.



EARTHWORK

EXCAVATION
X-SECTIONS 92 CU. YDS.

SUBGRADE MANIPULATION= 283.8 S.Y.

FEBRUARY 1989

PLANS PREPARED BY

PROFESSIONAL ENGINEERING CONSULTANTS, P.A.

ENGINEERS

WICHITA, KANSAS

