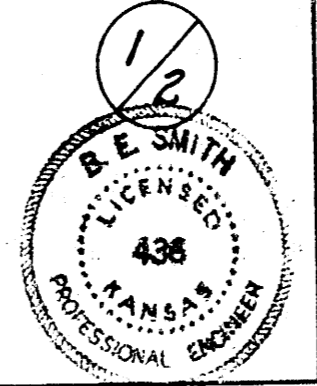
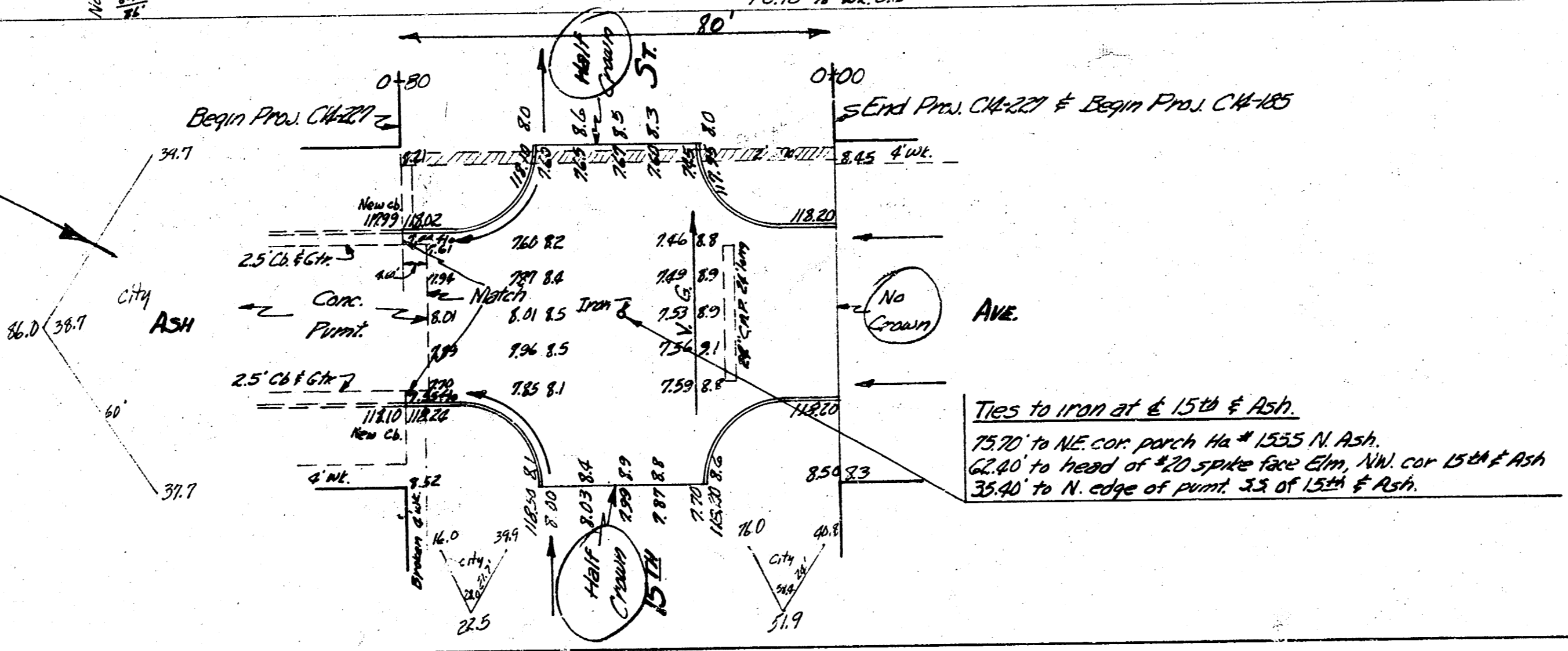


**NOTE**  
 All entrance pipes are to be disposed of in accordance with dirt chockers instructions.

B.M. 118.02 N end cb, 3 W cor 15th & Ash  
 B.M. 118.96 "B" in Ball end of Wk 5, N.W. cor 16th & Ash  
 Stationing N on E



**ASH**  
 S.L. 15th to S.L. 16th  
 30' CONC. & CB.  
 CITY OF WICHITA KANSAS  
 B.E. SMITH CITY ENGINEER  
 JULY 1954 Proj. No. CM-125 & CM-227